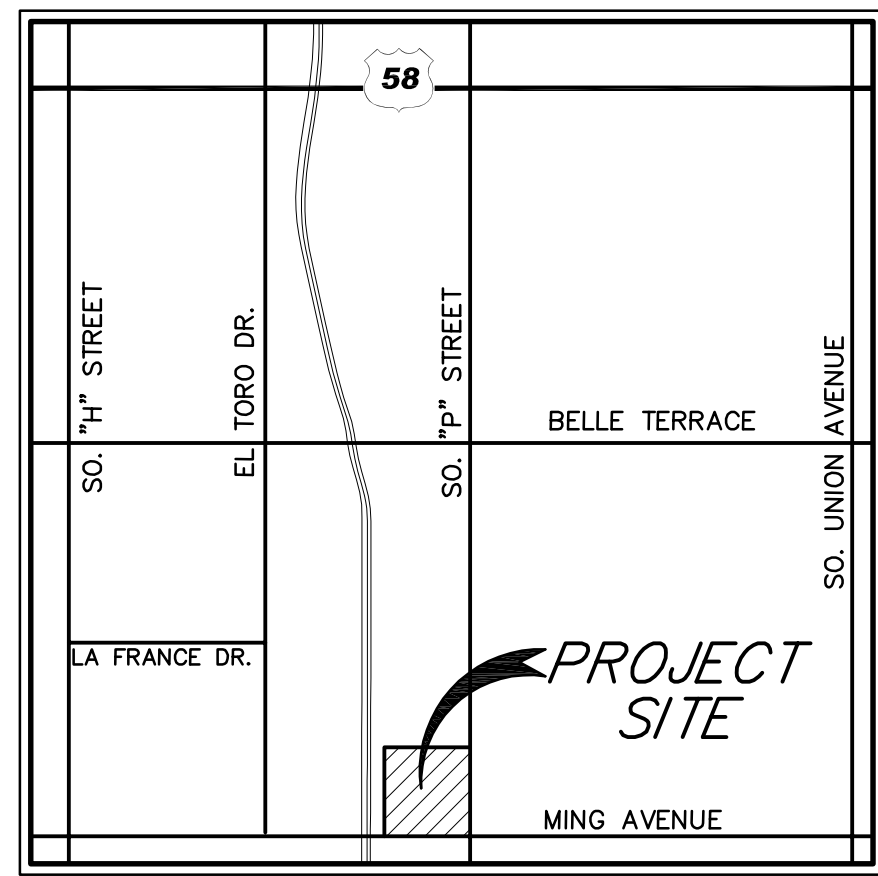
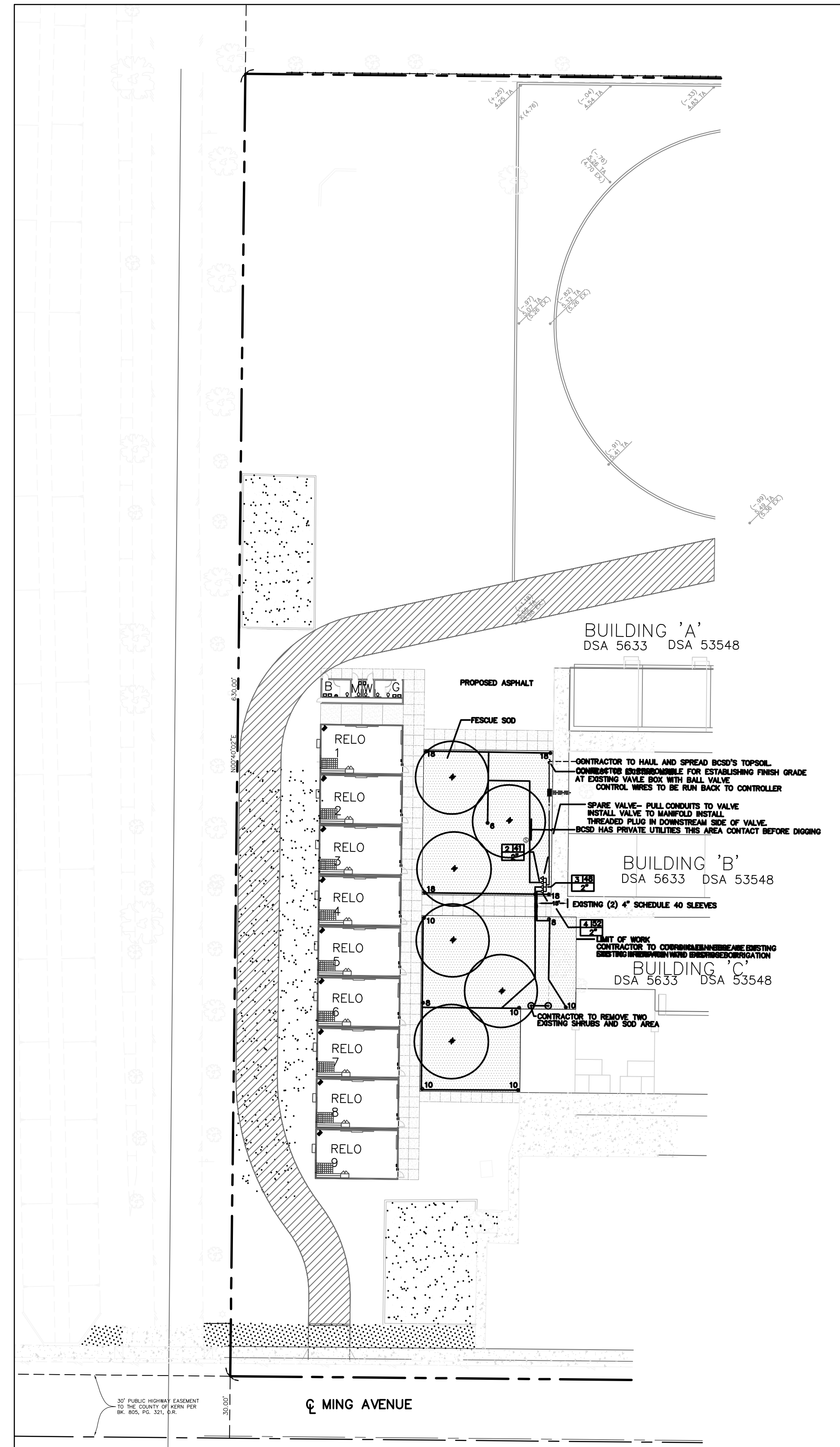


BAKERSFIELD CITY SCHOOL DISTRICT WAYSIDE ELEMENTARY SITE IMPROVEMENTS LANDSCAPE AND IRRIGATION PLANS

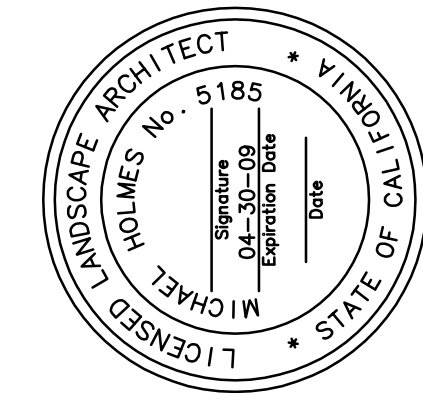


VICINITY MAP
NO SCALE



SHEET No. INDEX

- ① COVER SHEET
- ⑪ LANDSCAPING SPECIFICATIONS 1 OF 2
- ⑫ LANDSCAPING SPECIFICATIONS 2 OF 2
- ⑬ IRRIGATION SPECIFICATIONS 1 OF 2
- ⑭ IRRIGATION SPECIFICATIONS 2 OF 2
- ⑨ PLANTING & IRRIGATION DETAILS
- ⑮ LANDSCAPE & IRRIGATION PLAN



STATISTICS:

1. ASSESSOR'S PARCEL NUMBER: 011-290-20
2. APPROXIMATE ACREAGE: 8.5 AC
3. BUILDING SIZE: APPROXIMATELY 5216 S.F.
4. WATER: EXISTING ON-SITE WATER (CAL WATER)
5. SEWER DISPOSAL: EXISTING ON-SITE SEWER (C.O.B.)
6. DRAINAGE: ON-SITE
7. EXISTING LAND USE: SCHOOL SITE
8. PROPOSED LAND USE: SCHOOL SITE
9. FIRE PROTECTION: C.O.B.
10. ADDRESS: 1000 MING AVENUE
BAKERSFIELD, CA 93307

BENCHMARK USED:

THE SOUTHWEST CORNER OF THE EXISTING SANDBOX NEAR THE EXISTING DRIVEWAY AT MING AVENUE.

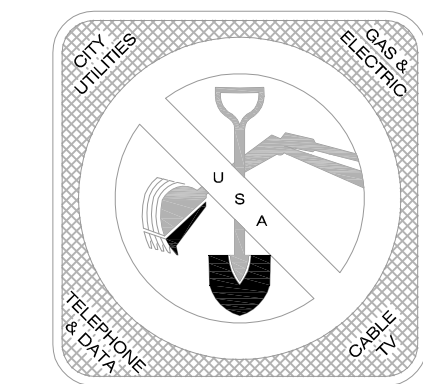
ELEVATION = 102.35 TOP OF CONCRETE CURB (ASSUMED)

NOTICE TO CONTRACTORS

- A. THE CONTRACTOR IS REQUIRED TO TAKE DUE PRECAUTIONARY MEASURES TO PROTECT THE UTILITIES OR STRUCTURES SHOWN AND ANY OTHER UTILITIES OR STRUCTURES FOUND AT THE SITE. IT SHALL BE THE CONTRACTOR'S RESPONSIBILITY TO NOTIFY THE OWNERS OF THE UTILITIES OR STRUCTURES CONCERNED BEFORE STARTING WORK.
- B. ALL CONTRACTORS AND SUBCONTRACTORS PERFORMING WORK SHOWN ON OR RELATED TO THESE PLANS SHALL CONDUCT THEIR OPERATIONS SO THAT ALL EMPLOYEES ARE PROVIDED A SAFE PLACE TO WORK AND THE PUBLIC IS PROTECTED. ALL CONTRACTORS AND SUBCONTRACTORS SHALL COMPLY WITH THE "OCCUPATIONAL SAFETY AND HEALTH REGULATIONS" OF THE U.S. DEPARTMENT OF LABOR, AND WITH THE STATE OF CALIFORNIA DEPARTMENT OF INDUSTRIAL RELATIONS' "CONSTRUCTION SAFETY ORDERS".
- C. THE LANDSCAPE ARCHITECT SHALL NOT BE RESPONSIBLE IN ANY WAY FOR THE CONTRACTORS' AND SUBCONTRACTORS' COMPLIANCE WITH THE "OCCUPATIONAL SAFETY AND HEALTH REGULATIONS" OF THE U.S. DEPARTMENT OF LABOR OR WITH THE STATE OF CALIFORNIA DEPARTMENT OF INDUSTRIAL RELATIONS' "CONSTRUCTION SAFETY ORDERS".
- D. CONTRACTOR FURTHER AGREES THAT HE SHALL ASSUME SOLE AND COMPLETE RESPONSIBILITY FOR JOB SITE CONDITIONS DURING THE COURSE OF CONSTRUCTION OF THIS PROJECT, INCLUDING SAFETY OF ALL PERSONS AND PROPERTY. THAT THIS REQUIREMENT SHALL APPLY CONTINUOUSLY AND NOT BE LIMITED TO NORMAL WORKING HOURS, AND THAT THE CONTRACTOR SHALL DEFEND, INDEMNIFY AND HOLD THE OWNER AND THE LANDSCAPE ARCHITECT HARMLESS FROM ANY AND ALL LIABILITY, REAL OR ALLEGED, IN CONNECTION WITH THE PERFORMANCE OF WORK ON THIS PROJECT, EXCEPTING FOR LIABILITY ARISING FROM THE SOLE NEGLIGENCE OF THE OWNER OR THE LANDSCAPE ARCHITECT.
- E. THE ESTIMATED QUANTITIES HEREON ARE ONLY FOR THE PURPOSE OF OBTAINING THE NECESSARY PERMITS, AND PINNACLE CIVIL ENGINEERING INC. DOES NOT GUARANTEE THE ACCURACY OF THE ESTIMATED QUANTITIES. THE CONTRACTOR SHALL PERFORM HIS OWN QUANTITY TAKEOFF BEFORE SUBMITTING A BID FOR ANY PORTION OF THE IMPROVEMENTS COVERED BY THESE PLANS.

KEY MAP
SCALE: 1"=40'

CALL: 1-800-227-2600



PINNACLE Civil Engineering, Inc.

2161 Saturn Court, Bakersfield, CA 93308
Phone: (661) 869-0184 Fax: (661) 377-0076

MICHAEL HOLMES	LA 5185 EXP. 4/30/09	DATE
REVISIONS	DELETED NORTH PORTION OF SITE	7-14-09
SPECIFIED TREES AND IRRIGATION COMPONENTS		

LANDSCAPE AND IRRIGATION PLANS
BCSD - WAYSIDE ELEMENTARY
IRRIGATION DETAILS
BAKERSFIELD, CALIFORNIA

JOB No.:	07-320
DWG No.:	07-320GRBM
DATE:	04/07/08
DRAWN BY:	MH
CHECKED BY:	MH
SHEET	1
OF 7 SHEETS	