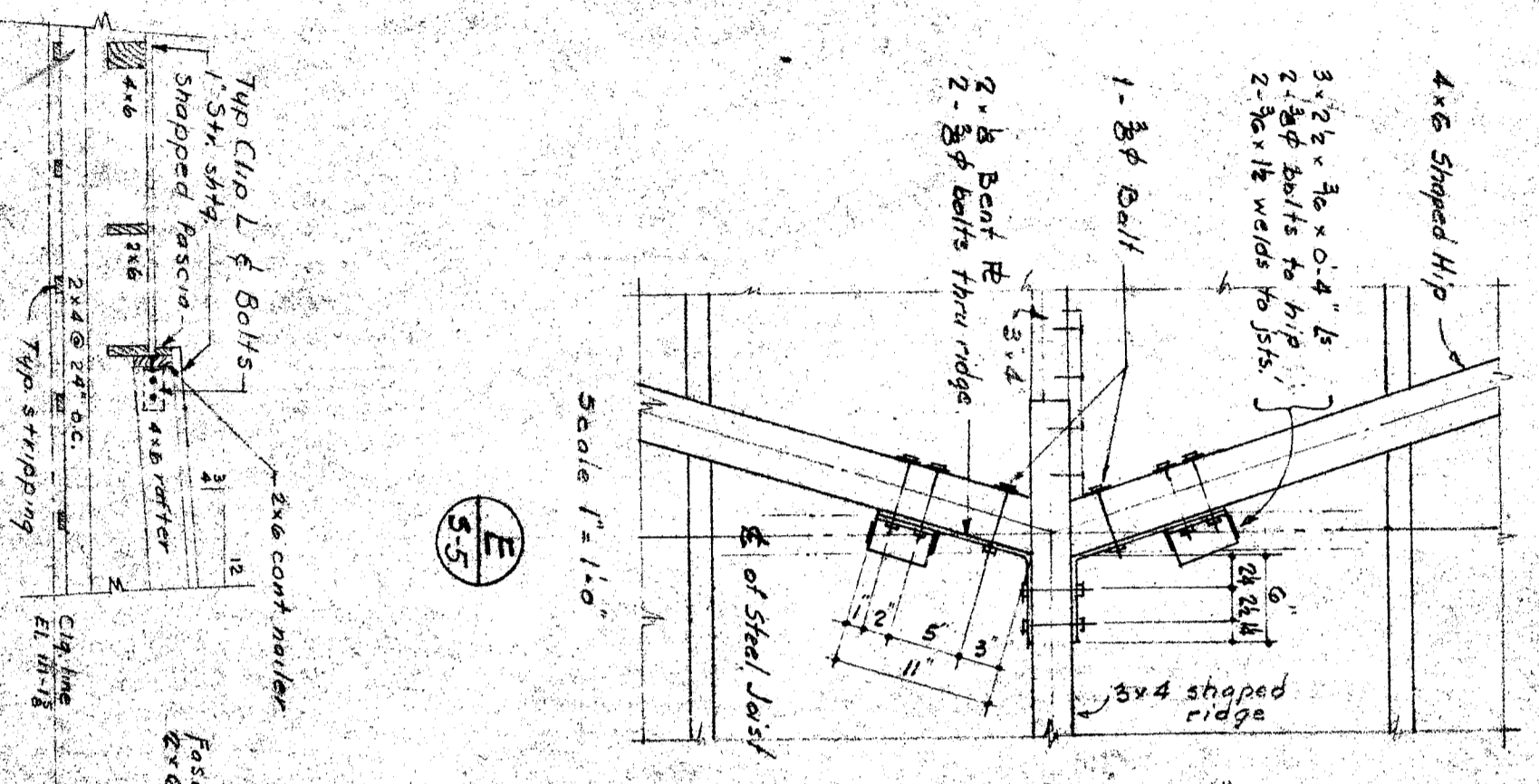


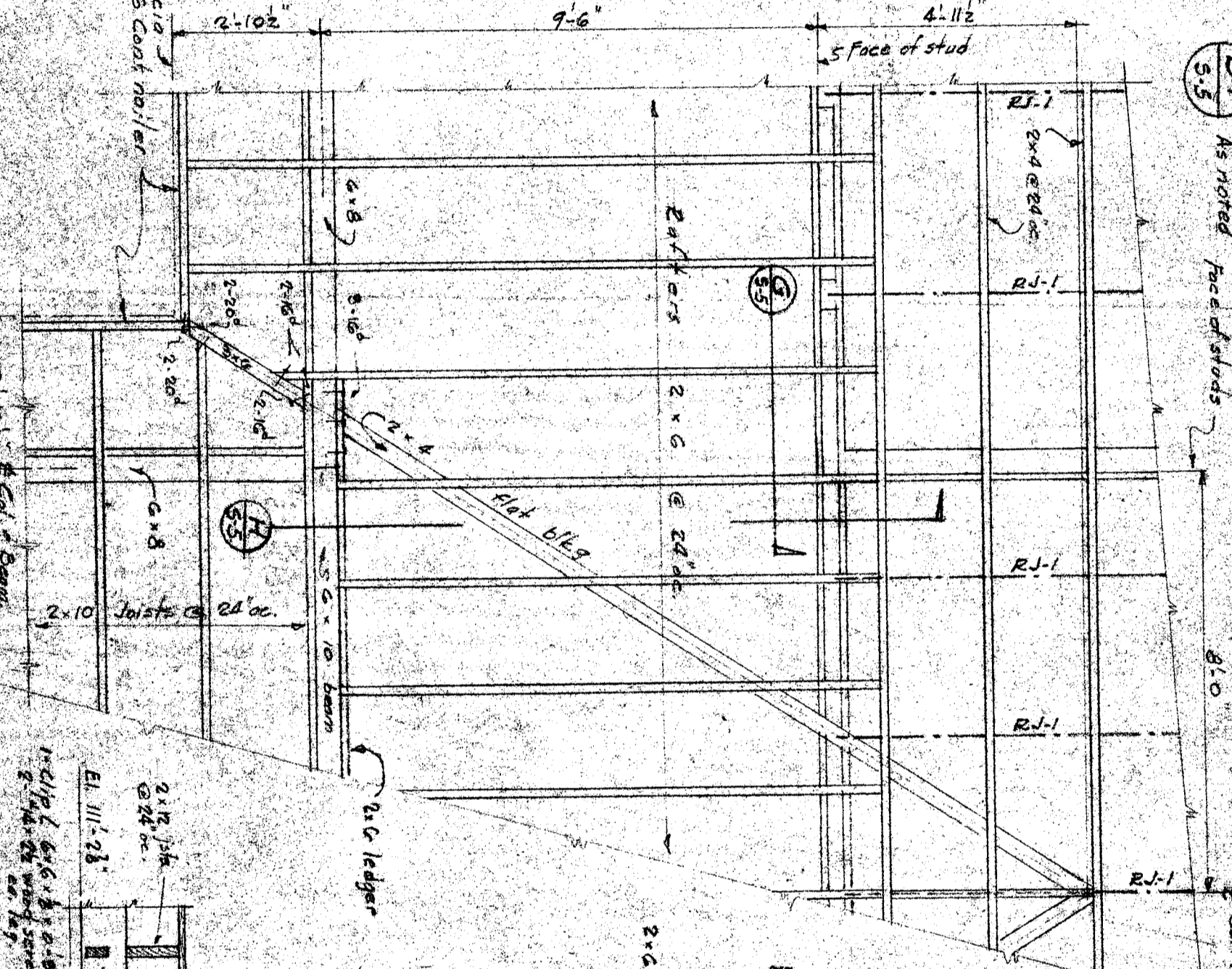
TYPICAL CLASSROOM & CORRIDOR ROOF HIP FRAMING
Scale: 3/8" = 1'-0"

(D)



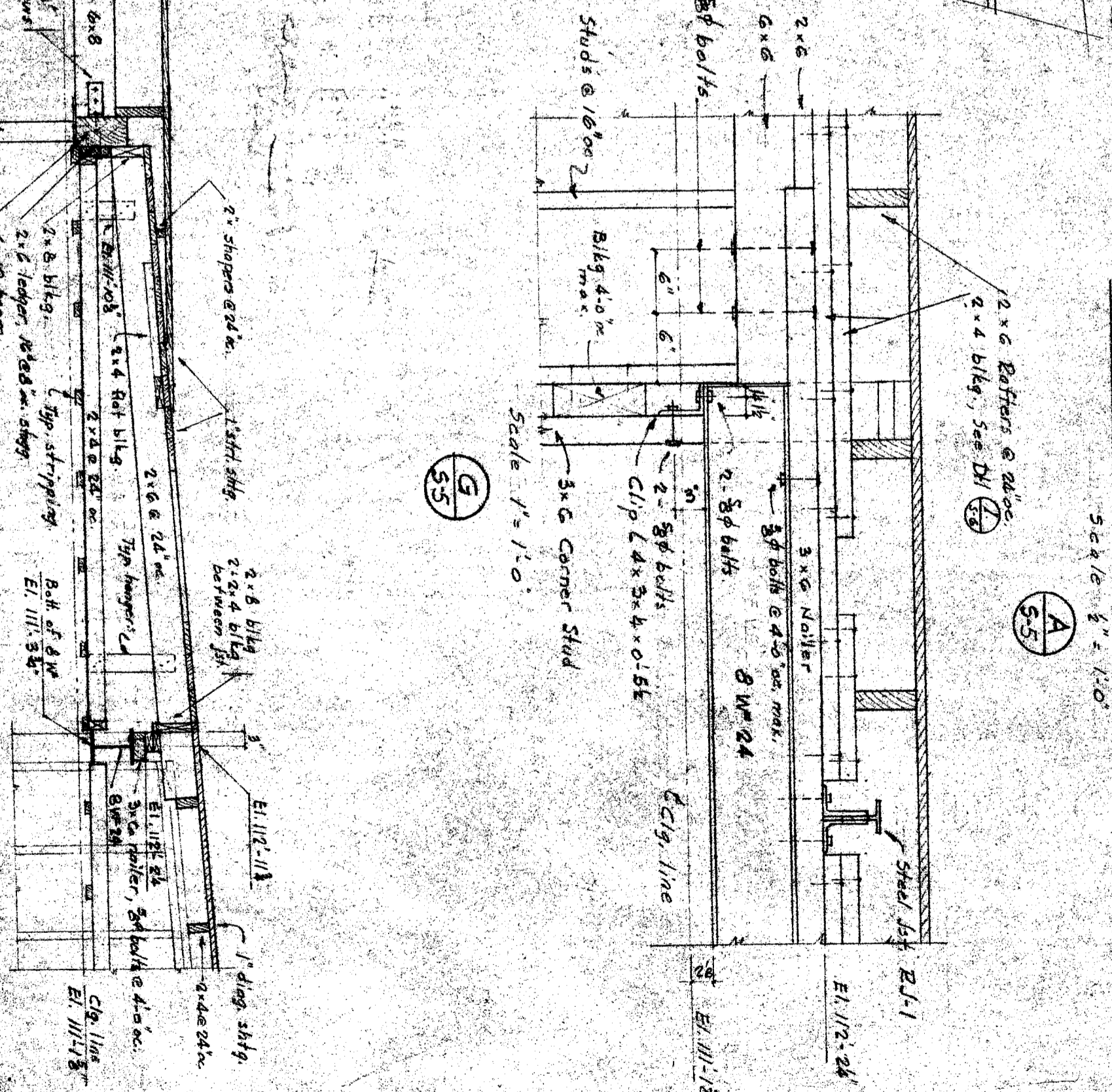
TYPICAL CORRIDOR ROOF VALLEY FRAMING
Scale: 3/8" = 1'-0"

(K)



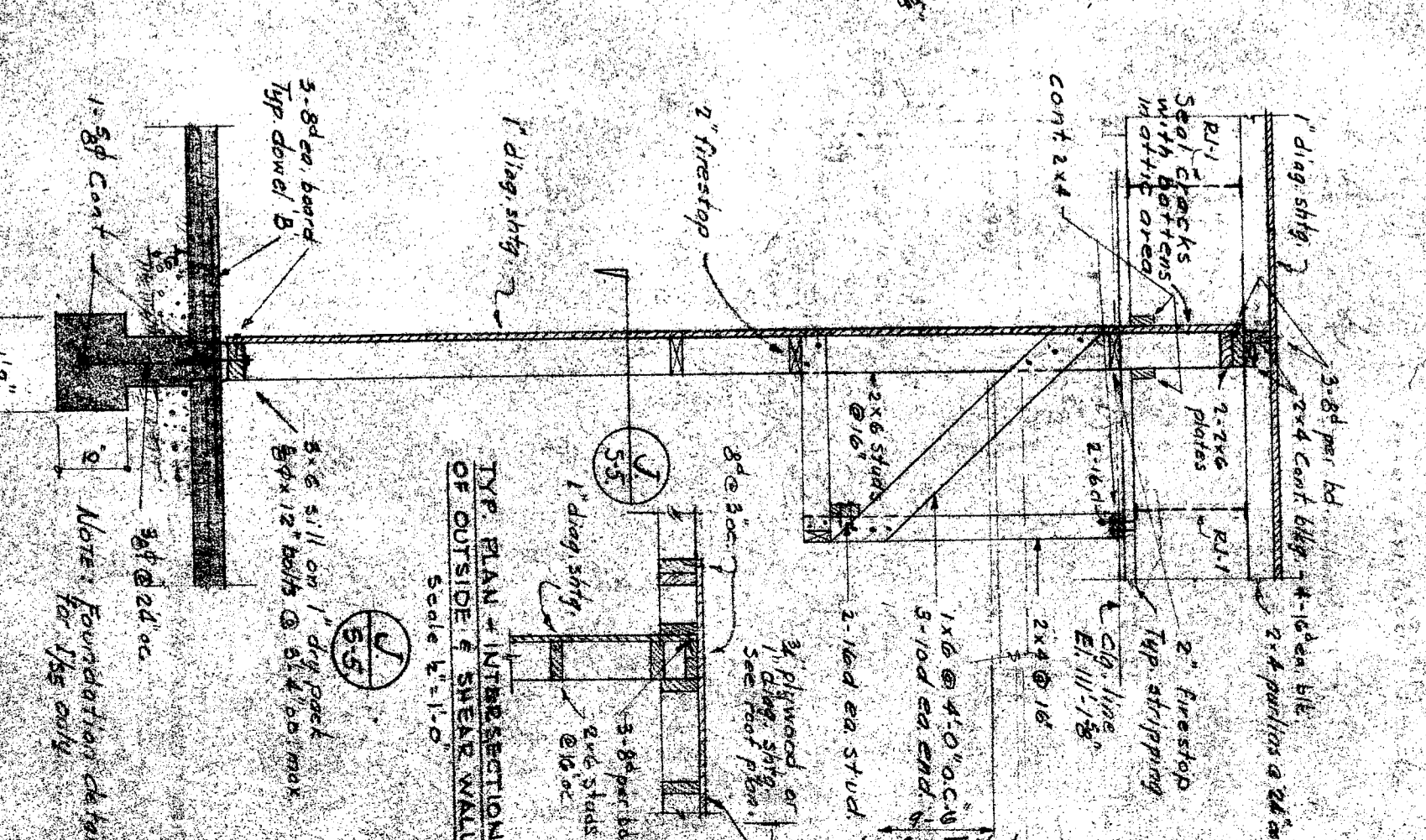
TYPICAL CLASSROOM SECTION
Scale: 3/8" = 1'-0"

(A)



TYPICAL CORRIDOR SECTION
Scale: 3/8" = 1'-0"

(G)



TYPICAL CLASSROOM & CORRIDOR ROOF HIP FRAMING
Scale: 3/8" = 1'-0"

(I)

HILMAN & NOWELL
STRUCTURAL ENGINEERS
ARCHITECTS BUILDERS LOS ANGELES
STATE OF CALIFORNIA DIVISION OF PUBLIC WORKS
DIVISION OF ARCHITECTURE
APPROVED 5-17-44
CALIFORNIA ARCHITECTS BOARD

STATE OF CALIFORNIA
DEPARTMENT OF PUBLIC WORKS
DIVISION OF ARCHITECTURE
STATE OF CALIFORNIA DIVISION OF PUBLIC WORKS
DIVISION OF ARCHITECTURE
APPROVED 5-17-44
CALIFORNIA ARCHITECTS BOARD

BAKERFIELD CITY SCHOOLS
BAKERFIELD CITY SCHOOL DISTRICT
1600 N. ST. BAKERFIELD, CALIF.
BOARD OF EDUCATION
MAY 5, 1944
PRESIDENT
ARCHITECT

ELMENTARY SCHOOL
BAKERFIELD CITY SCHOOL DISTRICT
STREET
BAKERFIELD, CALIFORNIA
ARCHITECT
CALIFORNIA ARCHITECTS BOARD

Notes: See Foundation Plan for
Elevations and footing pads.

(J) Finished well

(L) No finished well