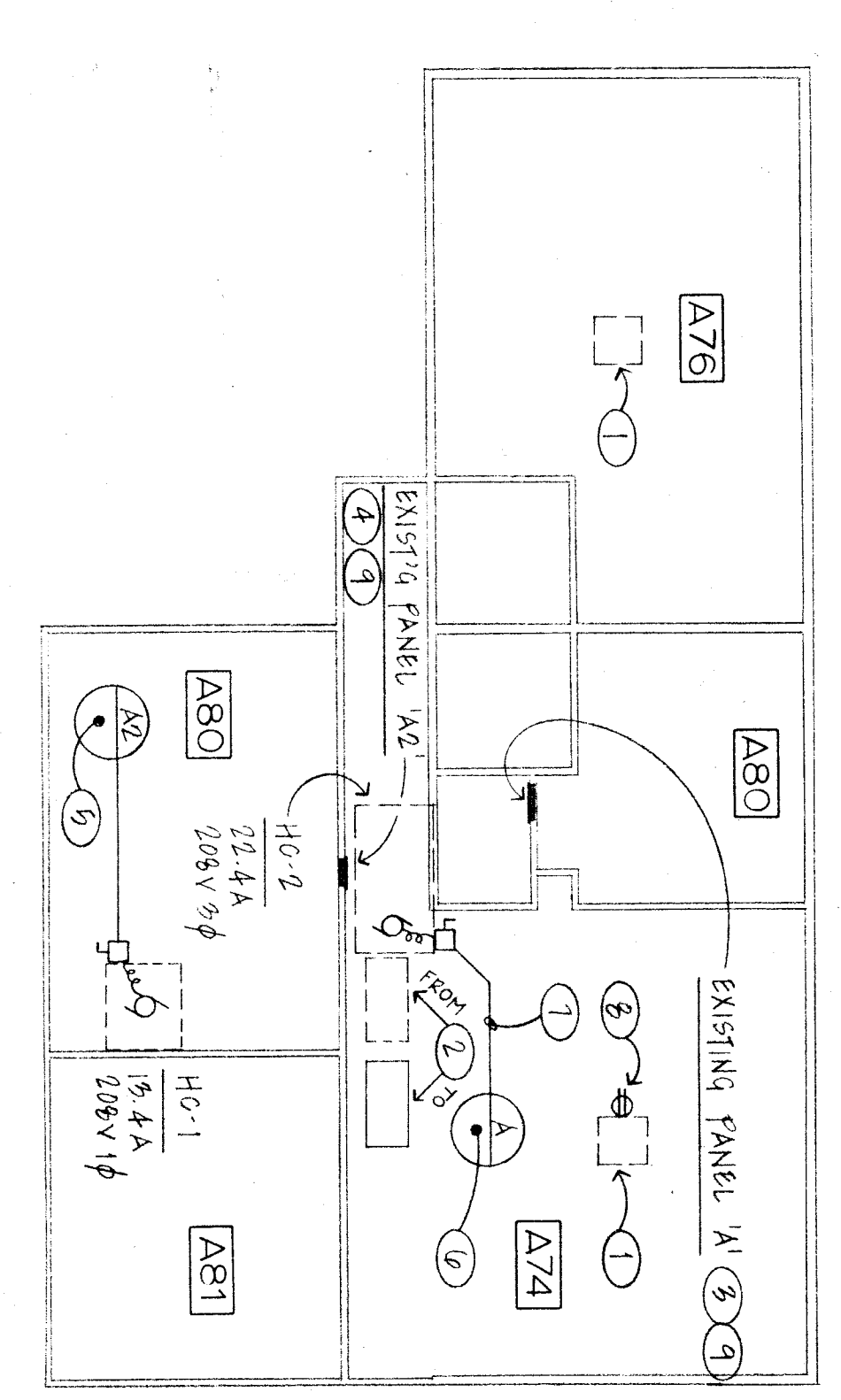
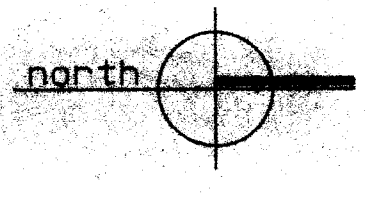


EB BUILDING "H" ELECTRICAL PLAN (ALTERNATE BID) REFER TO ALTERNATE BID FORM

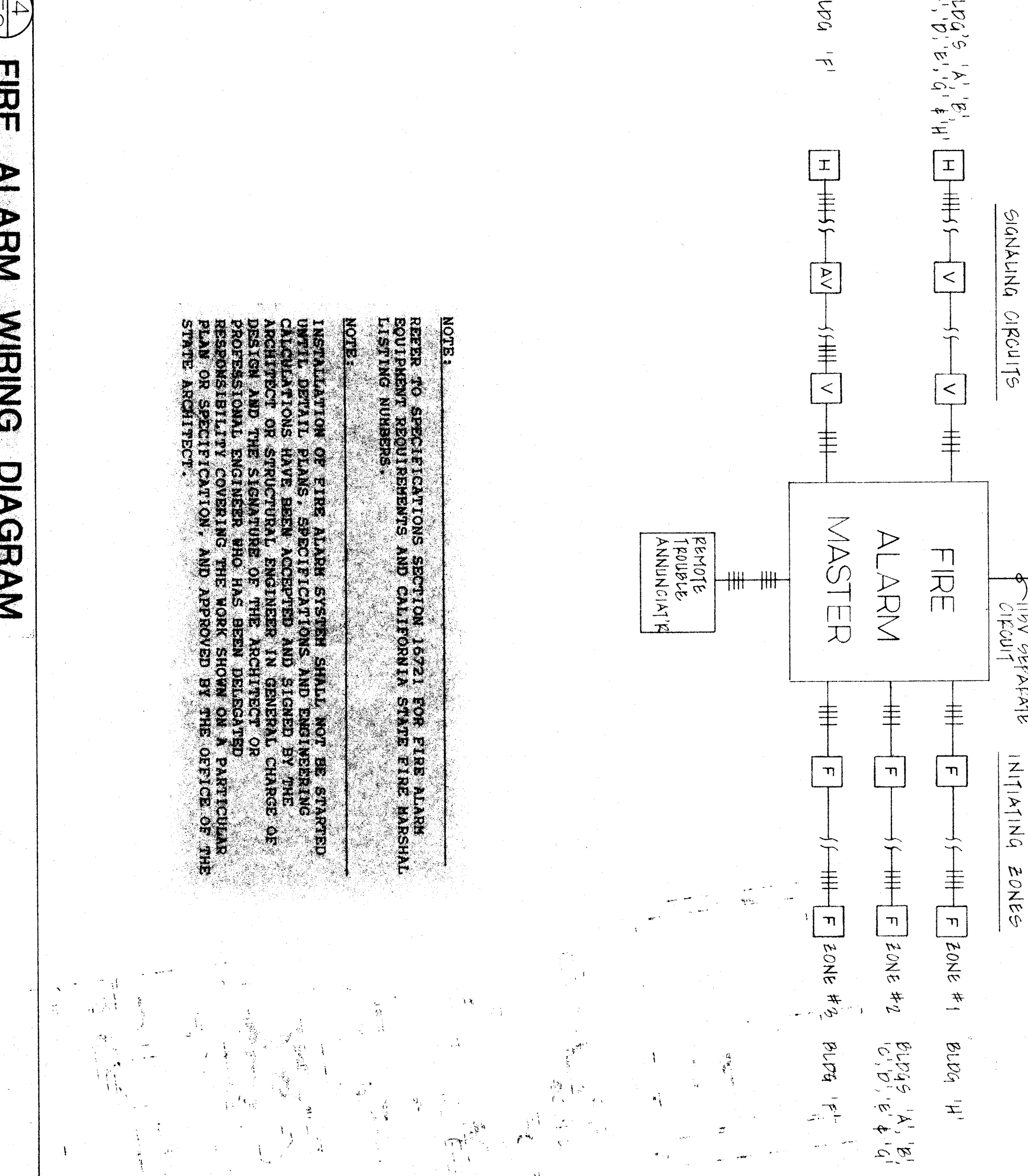
1/8" = 1' - 0"



- ELECTRICAL NOTES:**
1. DISCONNECT EXISTING EQUIPMENT COILER ON ROOF BEING REMOVED. RECONNECT AND RECONNECT ANY FEED-THRU CIRCUITS. LABEL OLD AND NEW WIRE. CAP OFF EXISTING CIRCUITS.
 2. RELOCATE EXISTING LIGHT FIXTURE TO NEW LOCATION AS SHOWN. PROVIDE NEW WIRING AND CONNECTIONS. PROVIDE NEW CONDUIT AND WIRING AS REQUIRED.
 3. REMOVE AND REPAIR EXISTING BUS ASSEMBLY AND CIRCUIT BREAKERS WITH NEW BUS ASSEMBLY AND NEW CIRCUIT BREAKERS AS FOLLOWS:
 - PANEL A80 - 1 - 100/200 3P 4W 100 AMP. 60/250. PROVIDE THE FOLLOWING CIRCUIT BREAKER: 1 - 50/250 1 - 40/250 1 - 20/250 WITH LOCK-ON FEATURE FOR NEW FIRE ALARM PANEL Y AND 12 - 80/1.
 4. REFER TO PANEL REPAIR SCHEDULE ON SHEET REF FOR APPLICABLE NOTES.
 5. PROVIDE A NEW 250/2 CIRCUIT BREAKER IN EXISTING PANEL ROOM FOR NEW 250/2 CIRCUIT BREAKER.
 6. CONNECT TO NEW 250/2 CIRCUIT BREAKER.
 7. 3/4" C - 3 #10 - 1 #10 END (THANK-CU)
 8. PROVIDE NEW WEATHERPROOF DUPLEX RECEPTACLE AT EXISTING 150V BRANCH CIRCUIT BREAKER AND CONNECT TO LINE.
 9. FISH DOWN IN EXISTING WALL IF POSSIBLE. IF NOT, CUT AND FINISH WALL AS REQUIRED.

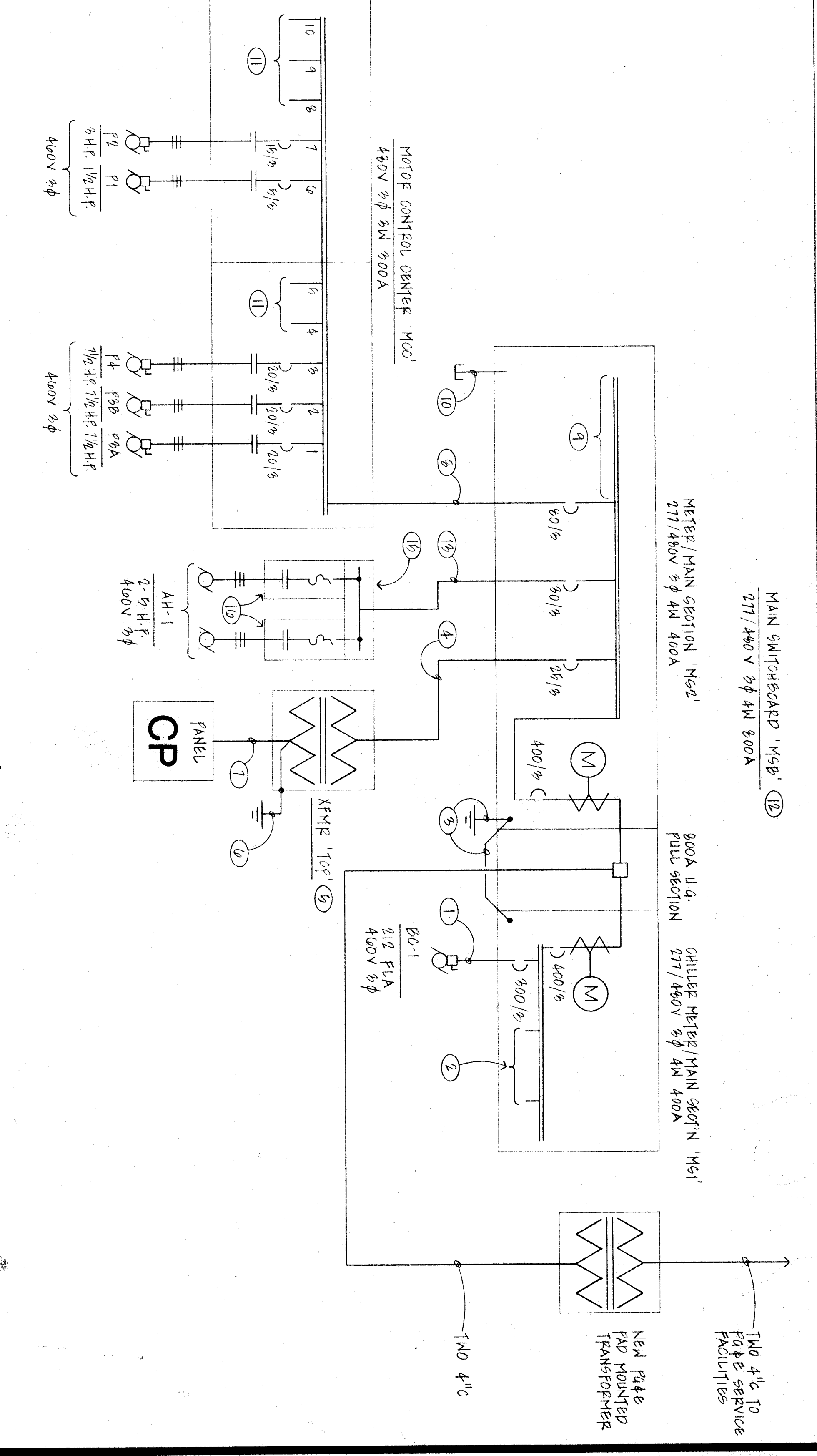


SCHOOL SEISMIC ANCHORAGE REQUIREMENTS:
ALL SEISMICALLY RESISTIVE EQUIPMENT SHALL BE ANCHORED OR MOUNTED TO RESIST HORIZONTAL FORCES ACTING IN ANY DIRECTION USING THE FOLLOWING CRITERIA:
 1. 20% OF OPERATING WEIGHT
 2. 100% OF OPERATING WEIGHT
 3. 100% OF OPERATING WEIGHT
 4. 100% OF OPERATING WEIGHT
 5. 100% OF OPERATING WEIGHT
 6. 100% OF OPERATING WEIGHT
 7. 100% OF OPERATING WEIGHT
 8. 100% OF OPERATING WEIGHT
 9. 100% OF OPERATING WEIGHT
 10. 100% OF OPERATING WEIGHT
 11. 100% OF OPERATING WEIGHT
 12. 100% OF OPERATING WEIGHT
 13. 100% OF OPERATING WEIGHT
 14. 100% OF OPERATING WEIGHT
 15. 100% OF OPERATING WEIGHT
 16. 100% OF OPERATING WEIGHT
 17. 100% OF OPERATING WEIGHT
 18. 100% OF OPERATING WEIGHT
 19. 100% OF OPERATING WEIGHT
 20. 100% OF OPERATING WEIGHT



EA FIRE ALARM WIRING DIAGRAM

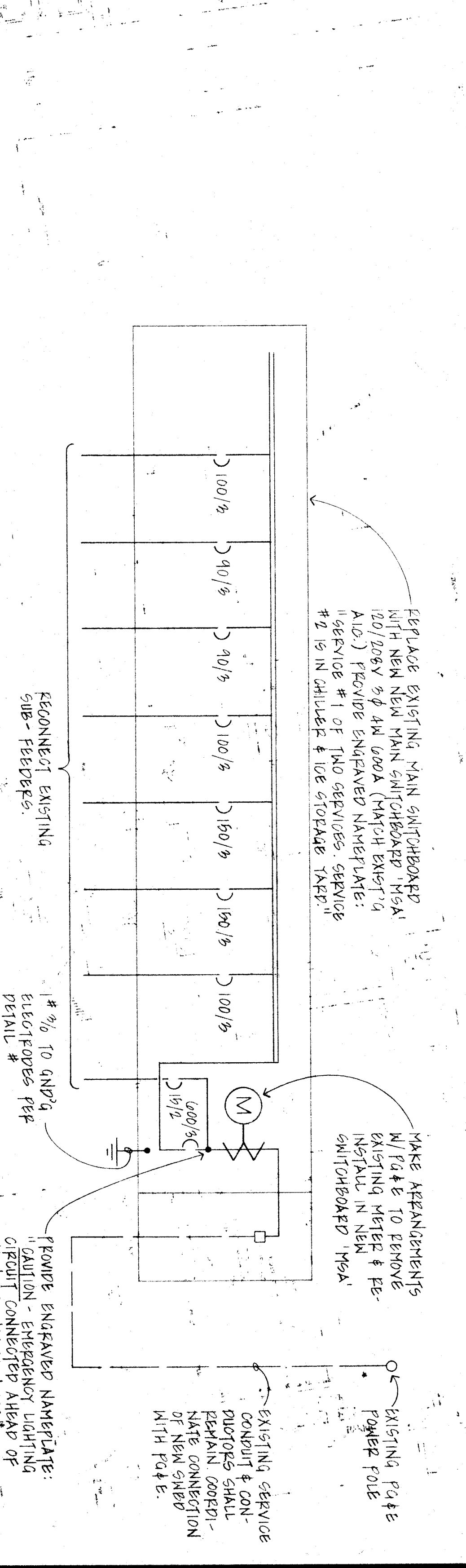
1/8" = 1' - 0"



- ONE-LINE DIAGRAM NOTES:**
(ALL CONDUCTORS SHALL BE THANK-CU, U.S.D.N.)
1. 2 1/2" - 3" 9000 RICH 1" 44 GND
 2. SPACE FOR MINIMUM OF TWO 100/3 CIRCUIT BREAKERS.
 3. 1" 40/3 TO GROUNDING ELECTRODES PER DETAIL 9/1/ET.
 4. 3/4" C - 3 #10 - 1 #10 GND
 5. 3/4" C - 2 #10 - 1 #10 GND
 6. TRANSFORMER 100V SHALL BE RATED AT 450V/1500/800V 3P 4W.
 7. 100V FLOOR MOUNTED AND WEATHERPROOF.
 8. BOND AND GROUND TRANSFORMER PER DETAIL 9/1/ET.
 9. 1 1/4" C - 4 #6 - 1 #10 GND
 10. 1 1/4" C - 3 #6 - 1 #10 GND
 11. SPACE FOR MINIMUM OF TWO 250/2 CIRCUIT BREAKERS.
 12. THREE 2 1/2" C STIMBUTS PER SITE ELECTRICAL PLAN, SHEET #E1.
 13. SPACE FOR FUTURE STARTERS, QUANTITY AS SHOWN.
 14. PROVIDE ENGRAVED NAMEPLATE "SERVICE WE OF THE MAIN".
 15. 3/4" C - 3 #10 - 1 #10 GND
 16. CONTRACTION SHALL VERIFY SHORT CIRCUIT CURRENT INTERRUPTING CAPACITY WITH FUSE AND EXCEED AVAILABLE.
 17. 5/8" X 5/8" X 24" LONG WEATHERPROOF OUTLET.
 18. COMBINATION FUSED DISCONNECT SWITCH/NAMEPLATE STARTER.
 19. NAME SIZE 0. WEATHERPROOF.

EB ONE LINE DIAGRAM

1/8" = 1' - 0"



EA EXISTING MAIN SWITCHBOARD REPLACEMENT

1/8" = 1' - 0"

BAKERSFIELD CITY SCHOOL DISTRICT
WAYSIDE ELEMENTARY SCHOOL MODERNIZATION
BAKERSFIELD, CALIFORNIA

KLASSEN CORPORATION
Architecture
2021 Westwind Drive
Bakersfield, CA 93301
(805) 327-0875

ONE LINE DIAGRAM & FIRE ALARM DIAGRAM

DATE: 11/15/2022
DRAWN BY: [Signature]
CHECKED BY: [Signature]
JOB NO: 1702
SHEET: 8 OF 8