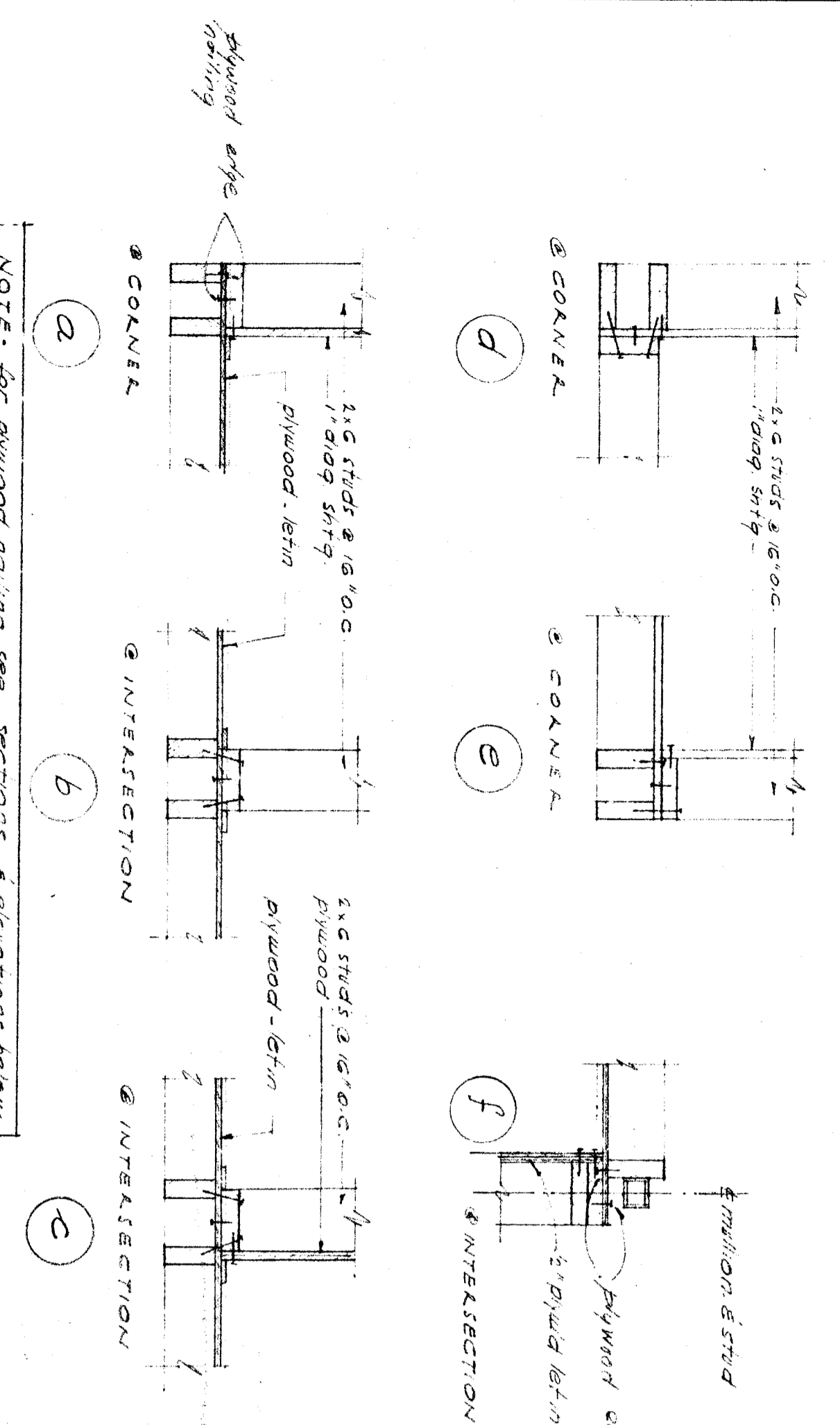
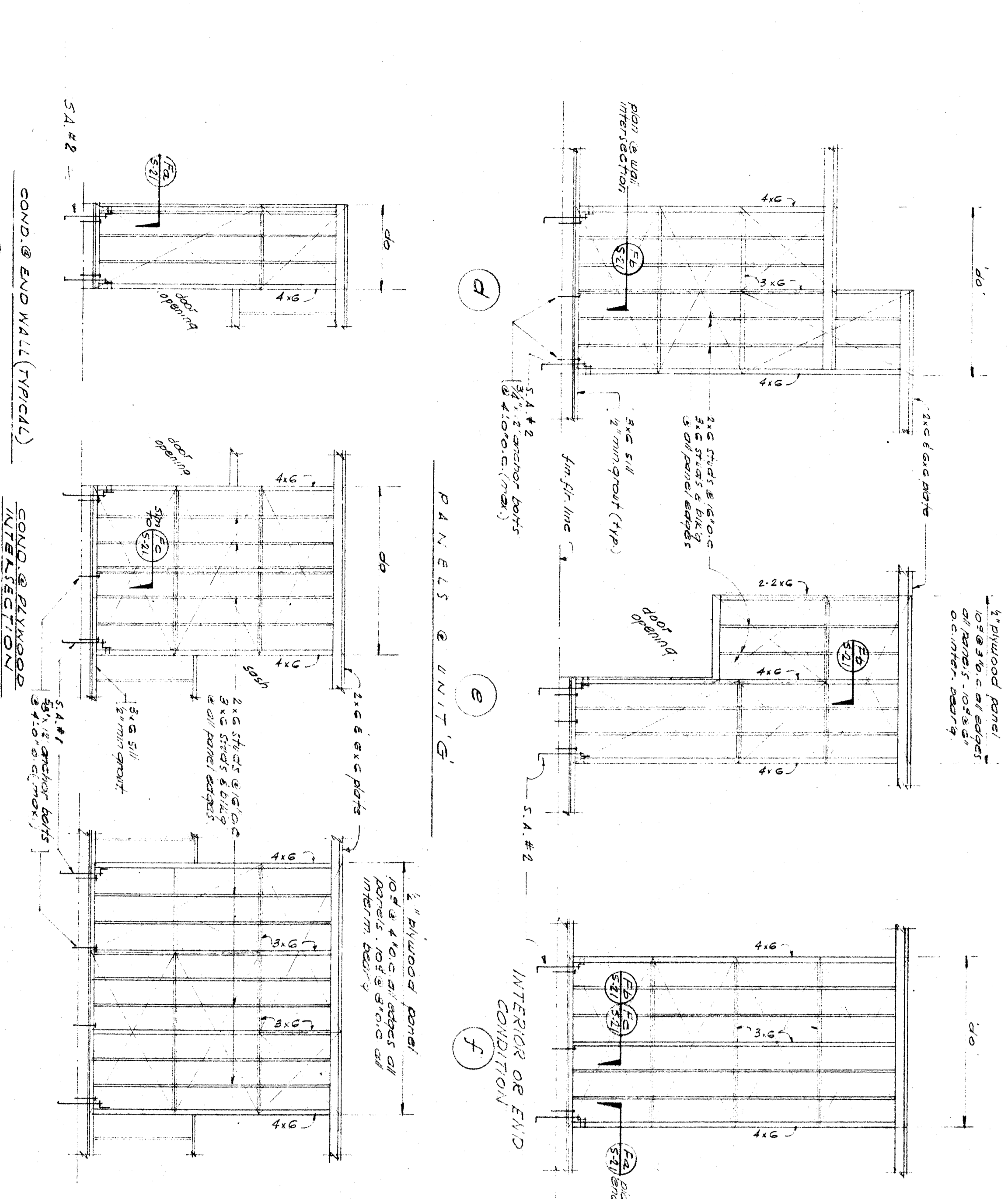


**DETAIL-CORNER CONNECTIONS**

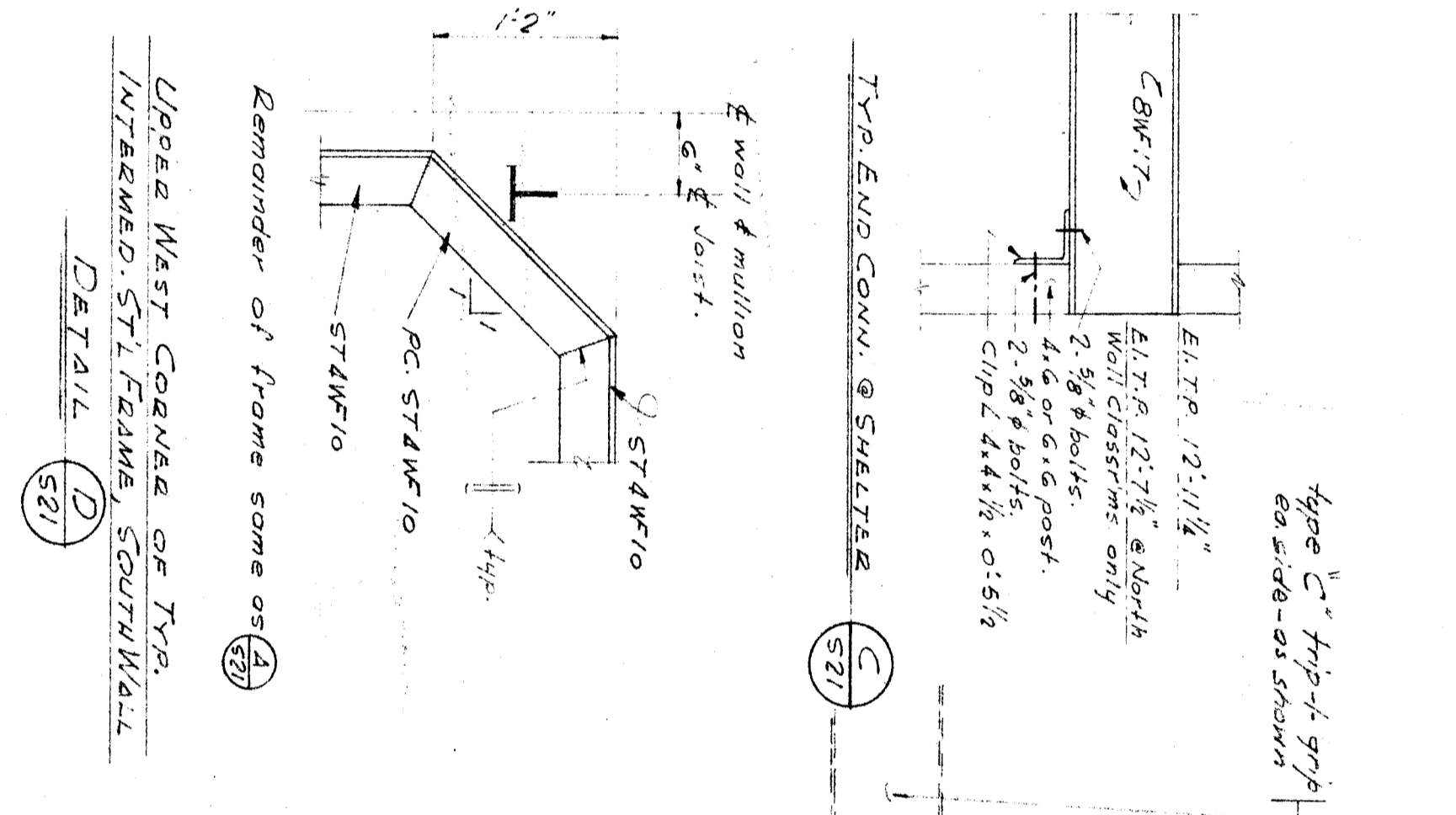


NOTE: FOR PLYWOOD PANELING SEE SECTION 5-211 & 5-212 FOR INTERIOR WALLS.

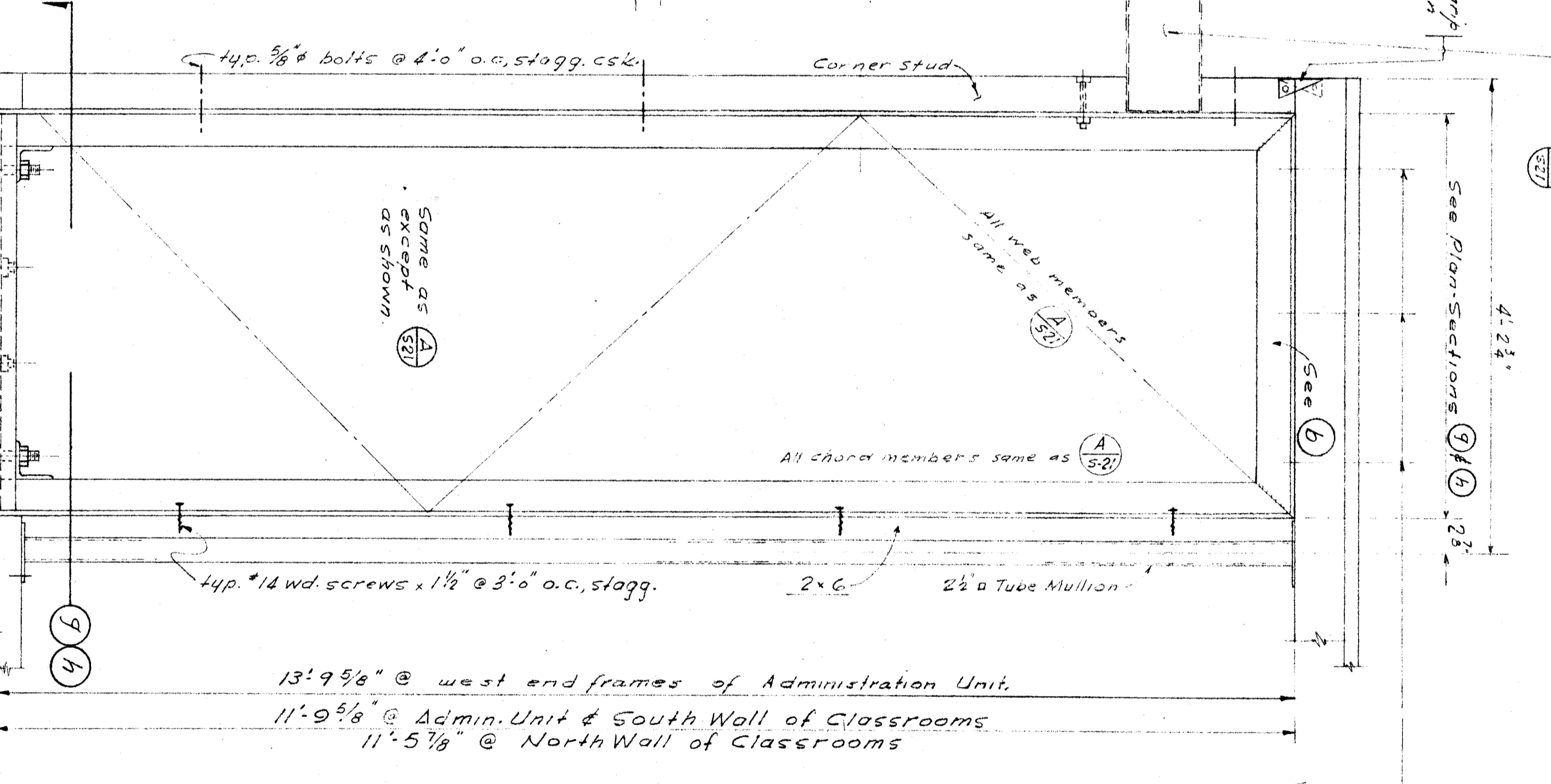


**PANELS & UNIT 'H'**

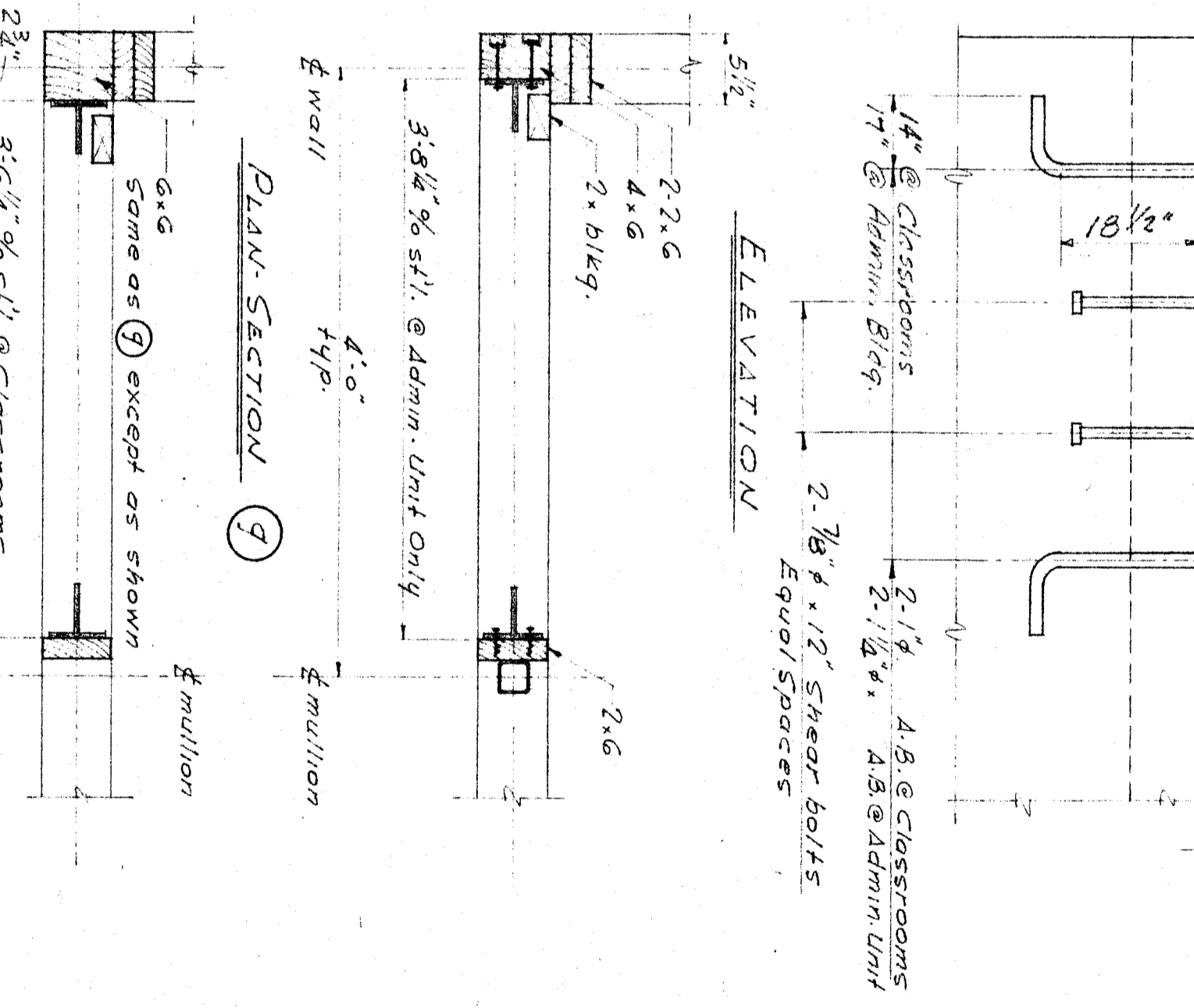
**DETAIL - PLYWOOD PANEL ELEVATIONS**



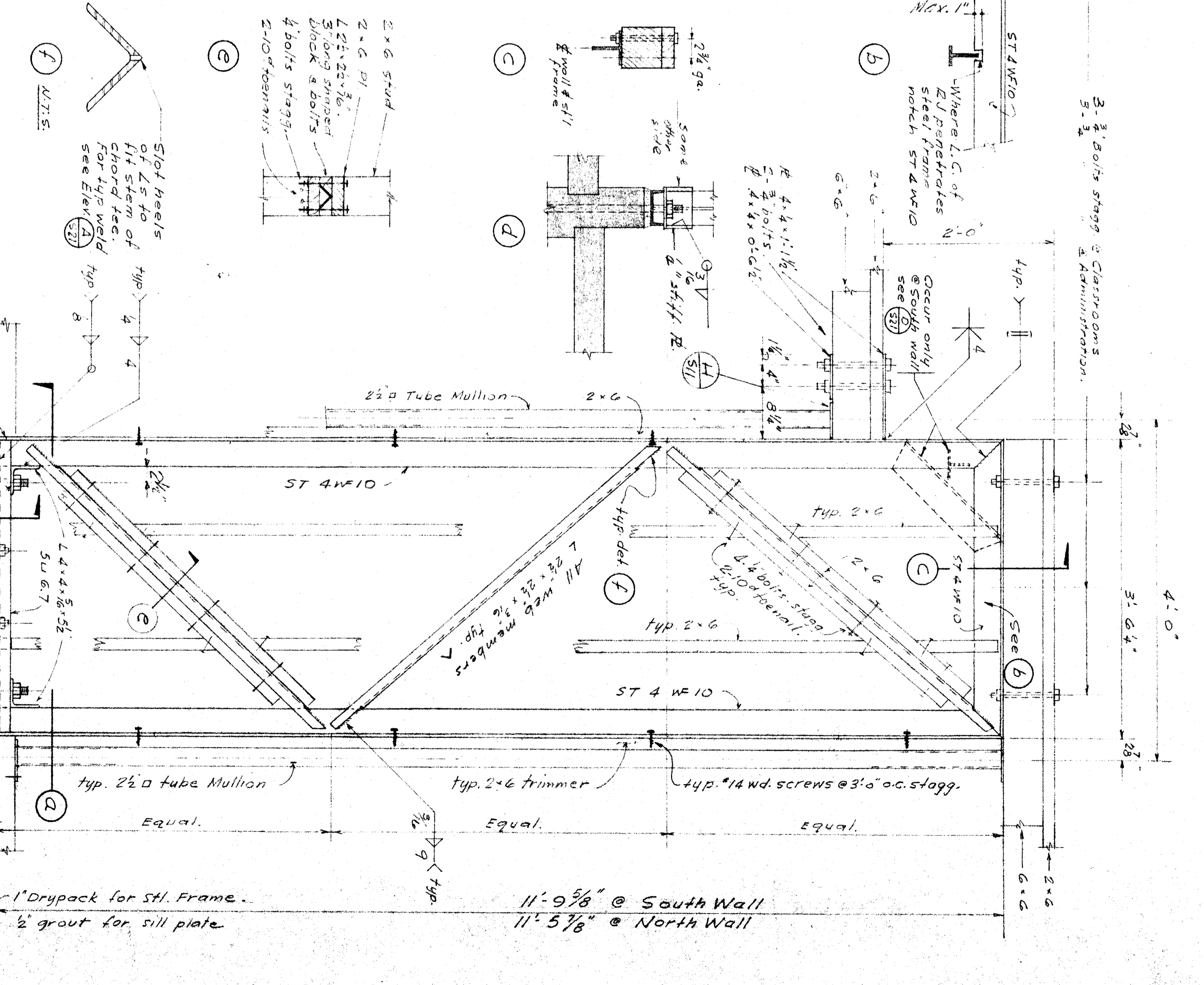
**TOP END CORNER & SHACKLE**



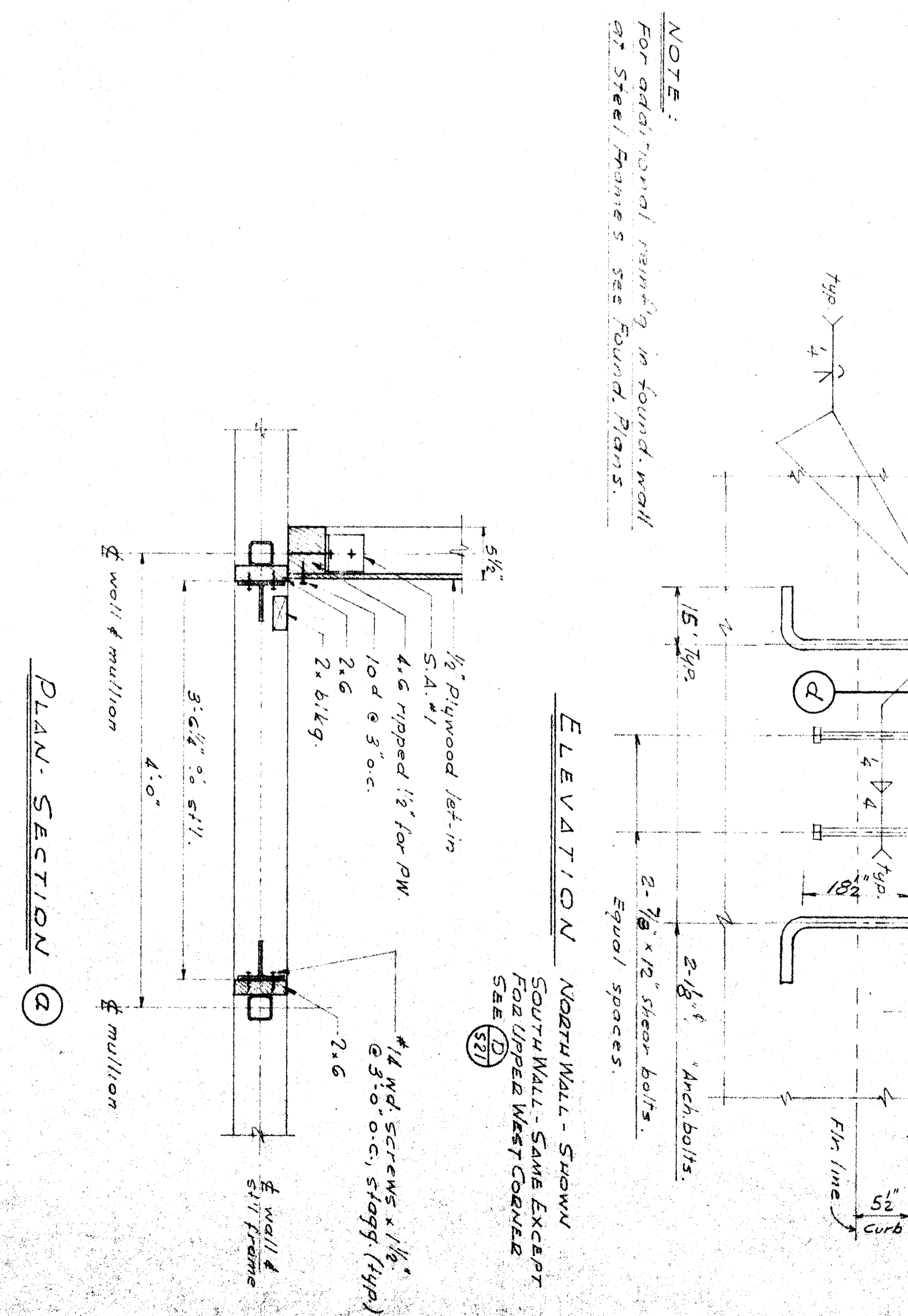
**TYPICAL CORNER STEEL FRAME**



**TYPICAL INTERMEDIATE STEEL FRAME**



**PLYWOOD PANEL & STEEL FRAME DETAILS**



**CLASSROOM UNIT**

20 9/15/26 F. W. K. [Signature]	1-11-1926 F. W. K. [Signature]	OFFICE OF SUPERINTENDENT OF SCHOOLS APPROVED	STATE OF CALIFORNIA DIVISION OF ARCHITECTURE	BAKERSFIELD CITY SCHOOLS WOOD & ST. BAKERSFIELD CAMP BOARD OF EDUCATION	APPROVED DATE	WASHINGTON JR. HIGH SCHOOL BAKERSFIELD CITY SCHOOL DISTRICT MOBILE AVENUE CALIFORNIA	ERNEST L. MCCOY A.I.A. ARCHITECT 3811 H STREET BAKERSFIELD CALIFORNIA	SHEET NO. DATE DRAWN CHECKED
---------------------------------------	-----------------------------------	---	---	---	------------------	---	--	---------------------------------------