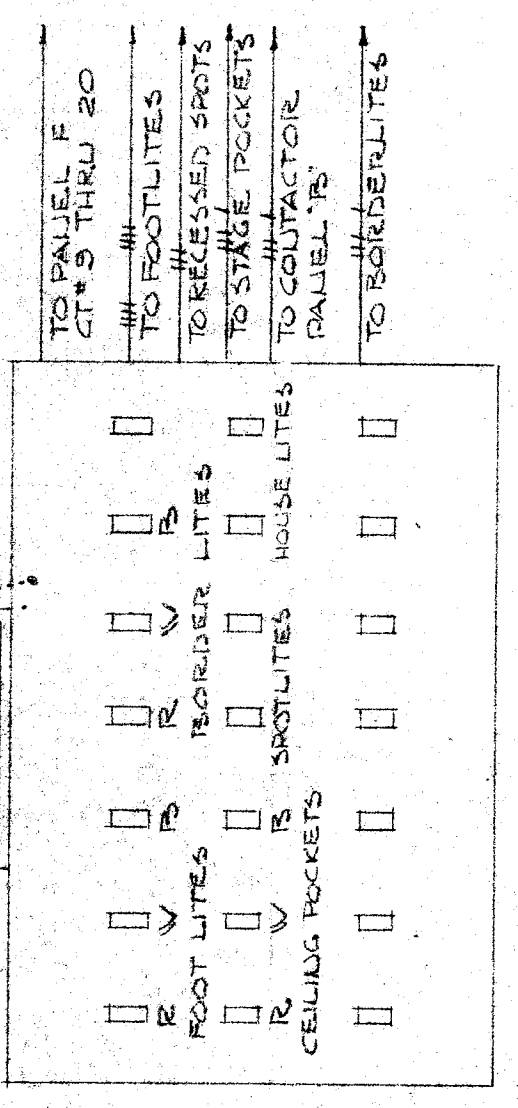


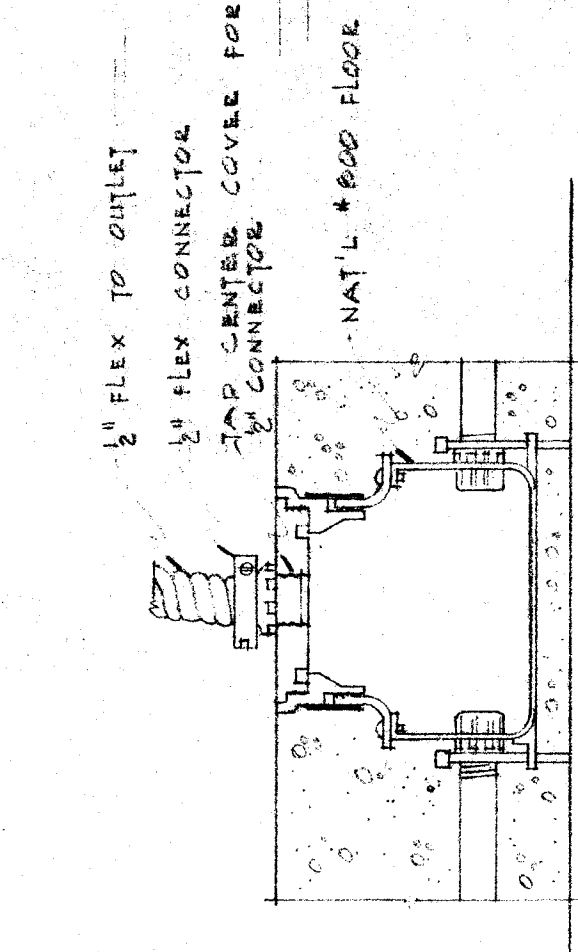
PANEL	TYPE	LOAD	FLUSH	ATD
CT. BREAKER	LOAD IN WATTS			
NO. SIZE	LOAD	DESCRIPTION		
1	2250	EA. E-1		
2	2250	EA. E-1		
3	2250	EA. E-1		
4	2250	EA. E-1		
5	1800	EA. E-3		
6	1800	EA. E-3		
7	1800	EA. E-3		
8	1800	EA. E-3		
9	1800	EA. E-3		
10	1800	EA. E-3		
11	1800	EA. E-3		
12	1800	EA. E-3		
13	1800	EA. E-3		
14	1800	EA. E-3		
15	1800	EA. E-3		
16	1800	EA. E-3		
17	1800	EA. E-3		
18	1800	EA. E-3		
19	1800	EA. E-3		
20	1800	EA. E-3		
21	1800	EA. E-3		
22	1800	EA. E-3		
23	1800	EA. E-3		
24	1800	EA. E-3		
25	1800	EA. E-3		
26	1800	EA. E-3		
27	1800	EA. E-3		
28	1800	EA. E-3		
29	1800	EA. E-3		
30	1800	EA. E-3		
31	1800	EA. E-3		
32	1800	EA. E-3		
33	1800	EA. E-3		
34	1800	EA. E-3		
35	1800	EA. E-3		
36	1800	EA. E-3		
37	1800	EA. E-3		
38	1800	EA. E-3		
TOTAL	11250			

PANEL 'K'	TYPE	LOAD	FLUSH	ATD
CT. BREAKER	LOAD IN WATTS			
NO. SIZE	LOAD	DESCRIPTION		
1	300	LITES - RA F-2		
2	1200	EA. F-2		
3	1200	EA. F-2		
4	1200	EA. F-2		
5	1200	EA. F-2		
6	1200	EA. F-2		
7	1200	EA. F-2		
8	1200	EA. F-2		
9	1200	EA. F-2		
10	1200	EA. F-2		
11	1200	EA. F-2		
12	1200	EA. F-2		
13	1200	EA. F-2		
14	1200	EA. F-2		
15	1200	EA. F-2		
16	1200	EA. F-2		
17	1200	EA. F-2		
18	1200	EA. F-2		
19	1200	EA. F-2		
20	1200	EA. F-2		
21	1200	EA. F-2		
22	1200	EA. F-2		
23	1200	EA. F-2		
24	1200	EA. F-2		
25	1200	EA. F-2		
26	1200	EA. F-2		
27	1200	EA. F-2		
28	1200	EA. F-2		
29	1200	EA. F-2		
30	1200	EA. F-2		
31	1200	EA. F-2		
32	1200	EA. F-2		
TOTAL	10275			

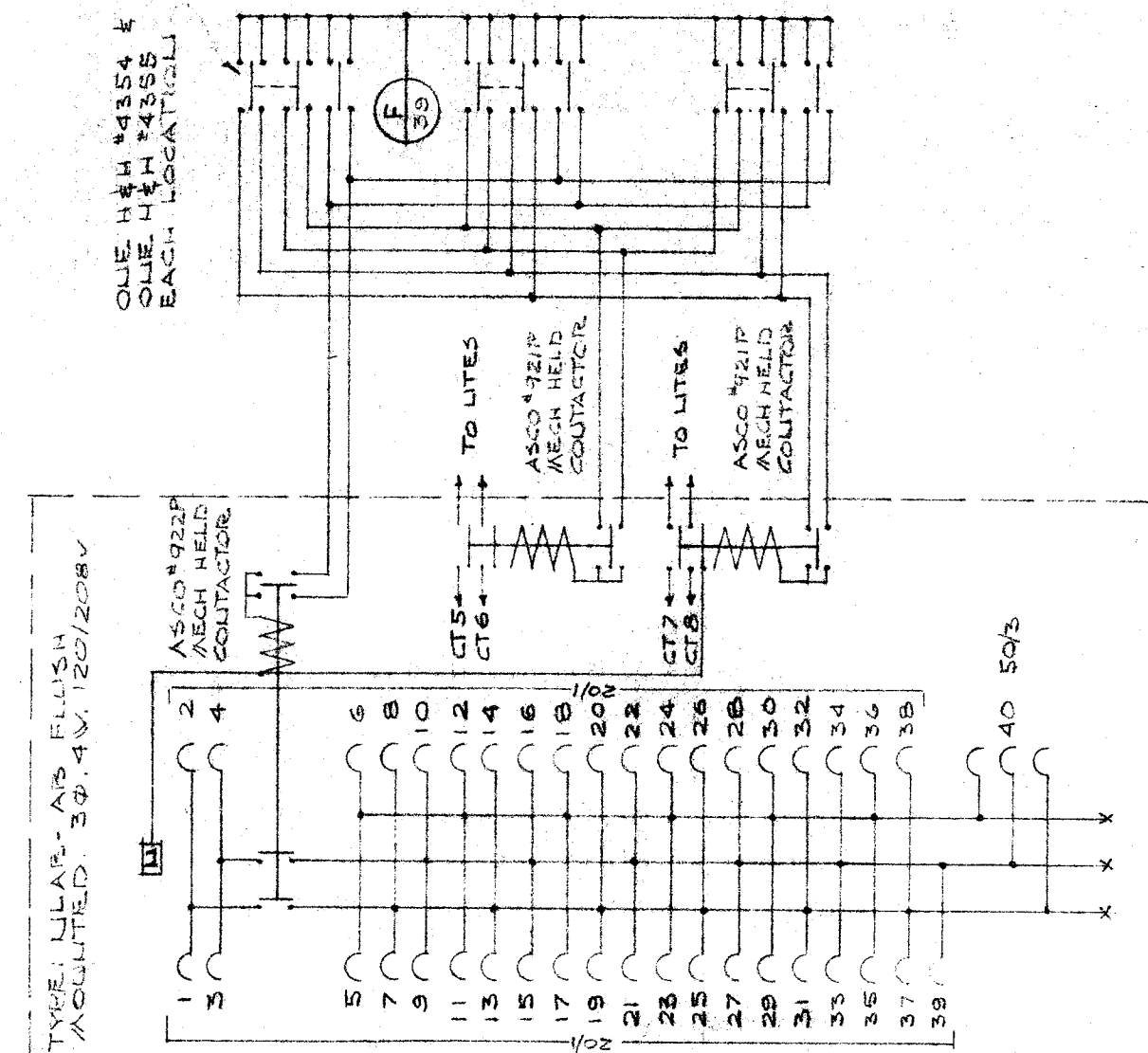


- NOTES:**
1. THE STAGE CONTROL PANEL IS FLUSH MOUNTED ON CLASH STEEL AND IS TO BE FINISHED IN HAWAIIAN BRYANT 7401. THE HOUSE LITE SWITCHES ARE 1/4" HANDBLANKETS. LETTERS IDENTIFIED WITH BASELITE PROVISION FOR FUTURE SWITCHES.
 2. THE PANEL IS TO BE FINISHED IN HAWAIIAN BRYANT 7401. THE HOUSE LITE SWITCHES ARE 1/4" HANDBLANKETS. LETTERS IDENTIFIED WITH BASELITE PROVISION FOR FUTURE SWITCHES.
 3. THE STAGE CONTROL PANEL IS FLUSH MOUNTED ON CLASH STEEL AND IS TO BE FINISHED IN HAWAIIAN BRYANT 7401. THE HOUSE LITE SWITCHES ARE 1/4" HANDBLANKETS. LETTERS IDENTIFIED WITH BASELITE PROVISION FOR FUTURE SWITCHES.
 4. THE STAGE CONTROL PANEL IS FLUSH MOUNTED ON CLASH STEEL AND IS TO BE FINISHED IN HAWAIIAN BRYANT 7401. THE HOUSE LITE SWITCHES ARE 1/4" HANDBLANKETS. LETTERS IDENTIFIED WITH BASELITE PROVISION FOR FUTURE SWITCHES.
 5. THE STAGE CONTROL PANEL IS FLUSH MOUNTED ON CLASH STEEL AND IS TO BE FINISHED IN HAWAIIAN BRYANT 7401. THE HOUSE LITE SWITCHES ARE 1/4" HANDBLANKETS. LETTERS IDENTIFIED WITH BASELITE PROVISION FOR FUTURE SWITCHES.

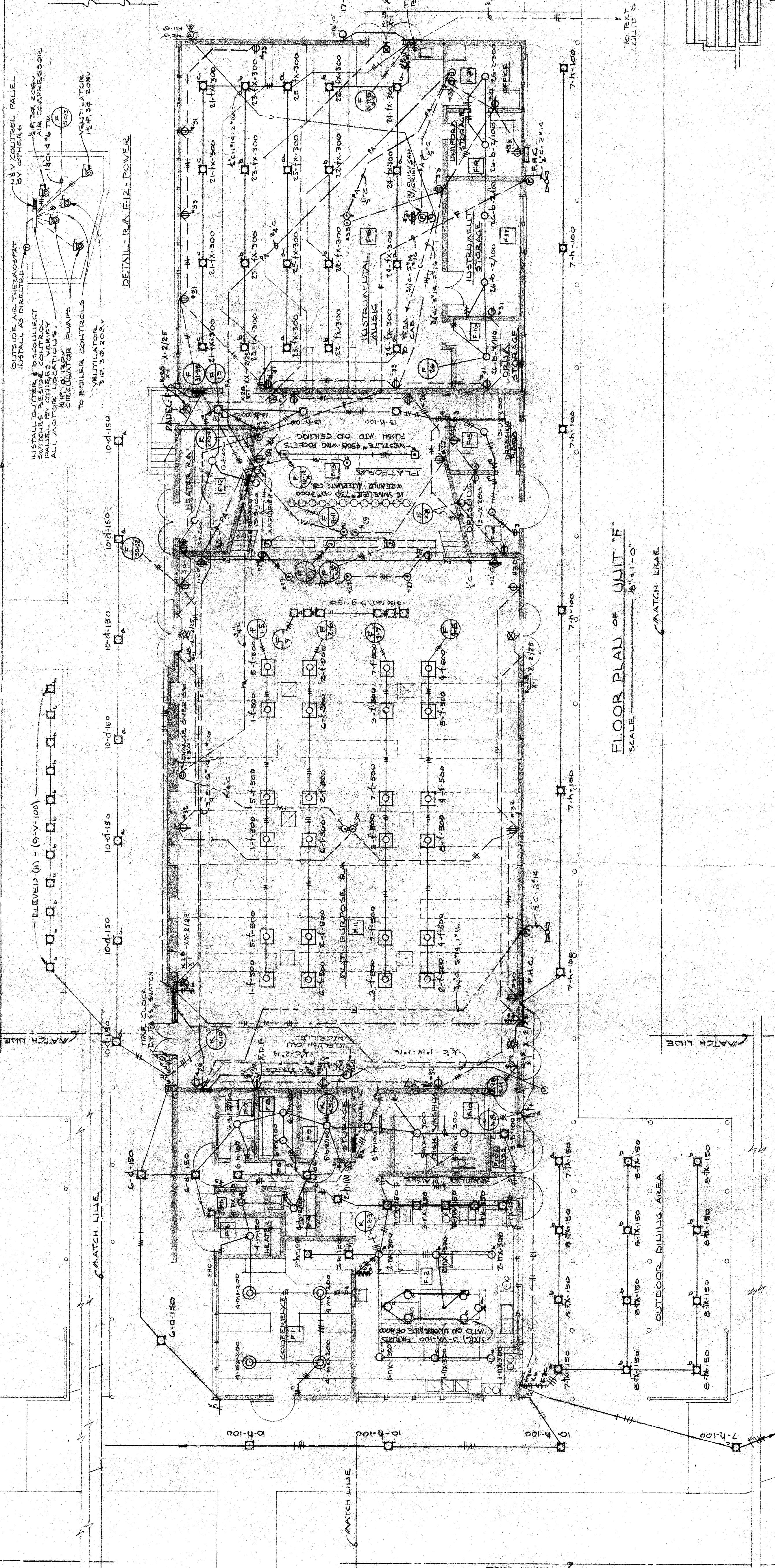
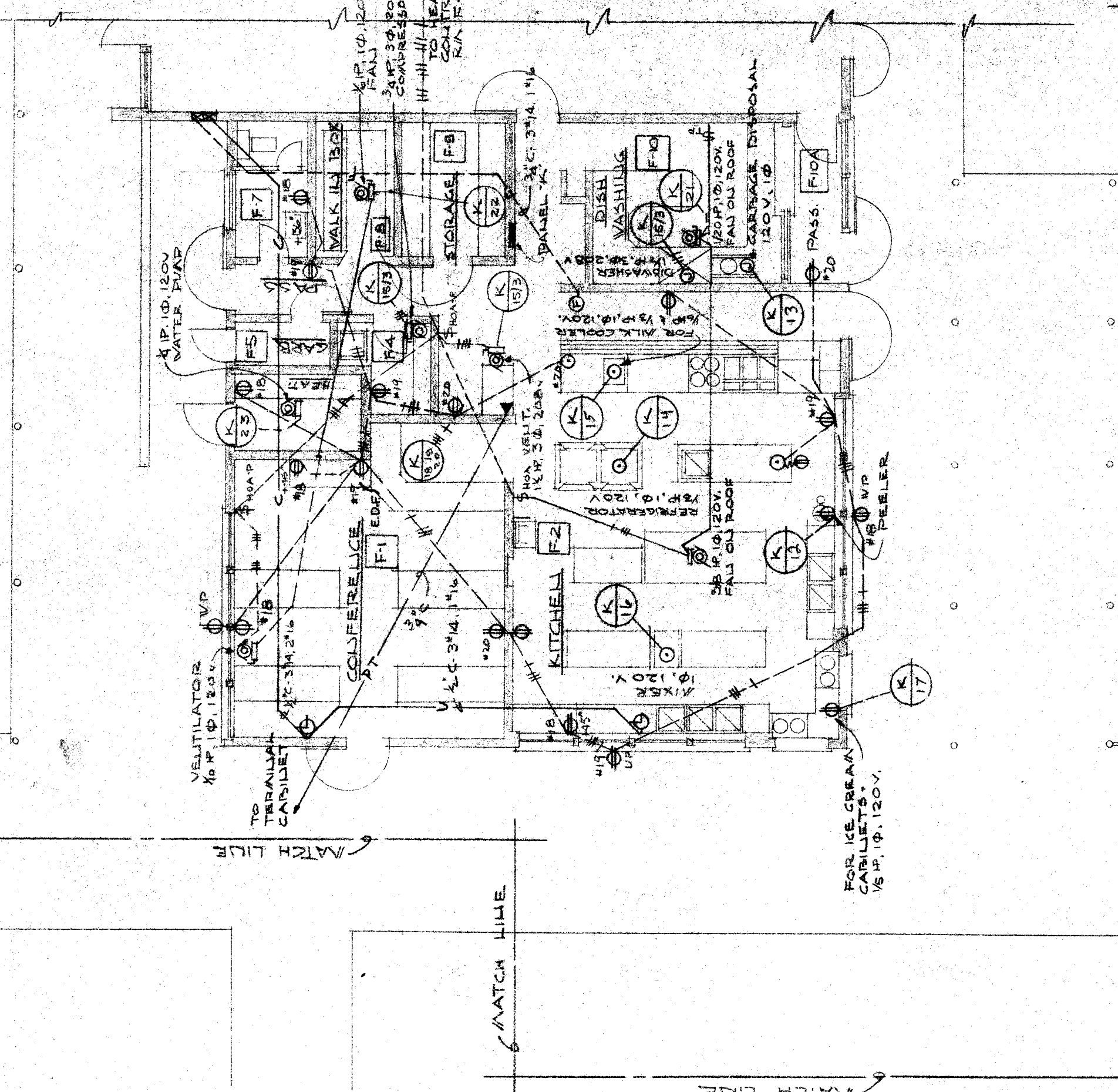
DETAIL - STAGE CONTROL PANEL
- 1/4" SCALE



DETAIL - FLOOR JUNCTION BOXES IN KITCHEN
- 1/4" SCALE

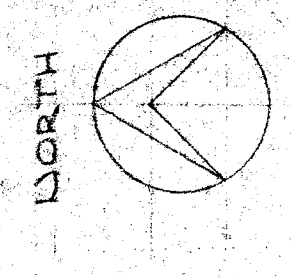


UTILITY DIAGRAM - PANEL 'K'
- 1/4" SCALE



FLOOR PLAN OF UNIT 'F'
SCALE - 1/8" = 1'-0"

KEY PLAN



STATE OF CALIFORNIA
DEPARTMENT OF PUBLIC WORKS
DIVISION OF ARCHITECTURE

OFFICE OF SUPERINTENDENT OF SCHOOLS
APPROVED ONE

EDWARD LOWE
ELECTRICAL ENGINEER
1015 DOWNEY ST. CALIF. REG. NO. 1754
PASADENA, CALIFORNIA

STATE OF CALIFORNIA DEPARTMENT OF PUBLIC WORKS
APPLICATION APPROVED
NO. 12345
DATE 1/23/54
BY SUPERVISOR STRUCTURAL DIVISION

CHECK AND VERIFY ALL DIMENSIONS AND CONDITIONS AT JOB SITE BEFORE PROCEEDING WITH THE WORK. REPORT ANY DISCREPANCIES TO THE ARCHITECT.

APPROVED DATE

WASHINGTON JR. HIGH SCHOOL
BAKERSFIELD CITY SCHOOL DISTRICT
BAKERSFIELD CALIFORNIA

ERNEST L. MCCOY - A.T.A. ARCHITECT
PHONE 48874
2811 N. STREET
BAKERSFIELD CALIFORNIA

SHEET NO. 5
DATE 1/23/54
DRAWN BY
CHECKED BY
OF 7 SHEETS