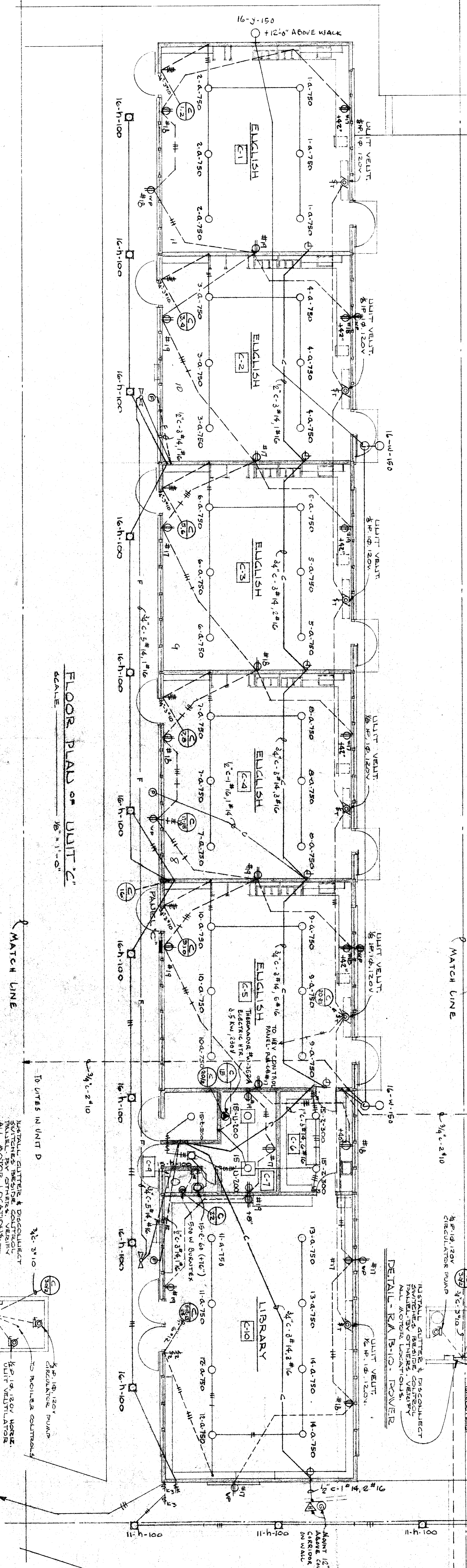
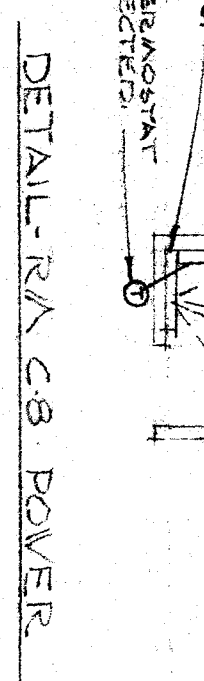


FLOOR PLAN OF UNIT B
SCALE 1/8" = 1'-0"

NOTE: CIRCUIT #B-1 THRU B-12 AND CIRCUIT #C-1 THRU C-10 ARE TO BE WIRING TO #10



FLOOR PLAN OF UNIT C
SCALE 1/8" = 1'-0"



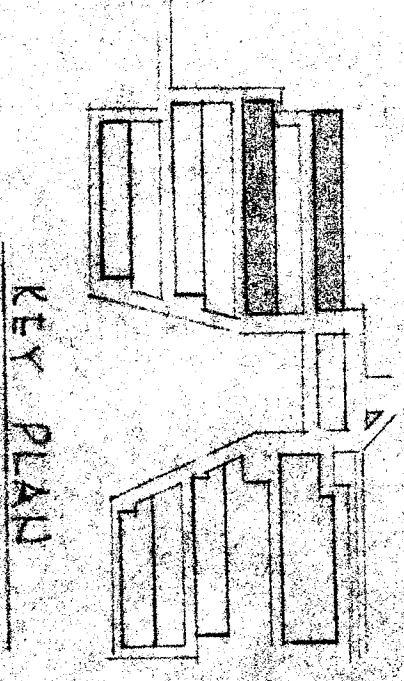
DETAIL - RA-CB POWER

TABLE: LOADS AND ENERGY DATA

CT	ENERGIZER	LOAD	WATTS	LOCATION
1	30	1	2250	UNIT B-A-B-1
2	3	1	2250	"B-2
3	1	1	2250	"B-3
4	1	1	2250	"B-4
5	1	1	2250	"B-5
6	1	1	2250	"B-6
7	1	1	2250	"B-7
8	1	1	2250	"B-8
9	1	1	2250	"B-9
10	1	1	2250	"B-10
11	1	1	2250	"B-11
12	70	1	1400	"B-12
13	1	1	1000	RECEPTACLES
14	1	1	1000	RECEPTACLES
15	1	1	1000	RECEPTACLES
16	1	1	1000	RECEPTACLES
17	1	1	1000	RECEPTACLES
18	1	1	1000	RECEPTACLES
19	1	1	1000	RECEPTACLES
20	1	1	1000	RECEPTACLES
21	1	1	1000	RECEPTACLES
22	1	1	1000	RECEPTACLES
23	1	1	1000	RECEPTACLES
24	1	1	1000	RECEPTACLES
25	1	1	1000	RECEPTACLES
26	1	1	1000	RECEPTACLES
27	30	2	500	H & V MOTORS
28	1	1	500	H & V MOTORS
29	1	1	500	H & V MOTORS
30	1	1	500	H & V MOTORS
31	1	1	500	H & V MOTORS
32	1	1	500	H & V MOTORS
33	1	1	500	H & V MOTORS
34	1	1	500	H & V MOTORS
35	1	1	500	H & V MOTORS
36	1	1	500	H & V MOTORS
37	1	1	500	H & V MOTORS
38	1	1	500	H & V MOTORS
39	1	1	500	H & V MOTORS
40	1	1	500	H & V MOTORS
41	1	1	500	H & V MOTORS
42	1	1	500	H & V MOTORS
43	1	1	500	H & V MOTORS
44	1	1	500	H & V MOTORS
45	1	1	500	H & V MOTORS
46	1	1	500	H & V MOTORS
47	1	1	500	H & V MOTORS
48	1	1	500	H & V MOTORS
49	1	1	500	H & V MOTORS
50	1	1	500	H & V MOTORS
51	1	1	500	H & V MOTORS
52	1	1	500	H & V MOTORS
53	1	1	500	H & V MOTORS
54	1	1	500	H & V MOTORS
55	1	1	500	H & V MOTORS
56	1	1	500	H & V MOTORS
57	1	1	500	H & V MOTORS
58	1	1	500	H & V MOTORS
59	1	1	500	H & V MOTORS
60	1	1	500	H & V MOTORS
61	1	1	500	H & V MOTORS
62	1	1	500	H & V MOTORS
63	1	1	500	H & V MOTORS
64	1	1	500	H & V MOTORS
65	1	1	500	H & V MOTORS
66	1	1	500	H & V MOTORS
67	1	1	500	H & V MOTORS
68	1	1	500	H & V MOTORS
69	1	1	500	H & V MOTORS
70	1	1	500	H & V MOTORS
71	1	1	500	H & V MOTORS
72	1	1	500	H & V MOTORS
73	1	1	500	H & V MOTORS
74	1	1	500	H & V MOTORS
75	1	1	500	H & V MOTORS
76	1	1	500	H & V MOTORS
77	1	1	500	H & V MOTORS
78	1	1	500	H & V MOTORS
79	1	1	500	H & V MOTORS
80	1	1	500	H & V MOTORS
81	1	1	500	H & V MOTORS
82	1	1	500	H & V MOTORS
83	1	1	500	H & V MOTORS
84	1	1	500	H & V MOTORS
85	1	1	500	H & V MOTORS
86	1	1	500	H & V MOTORS
87	1	1	500	H & V MOTORS
88	1	1	500	H & V MOTORS
89	1	1	500	H & V MOTORS
90	1	1	500	H & V MOTORS
91	1	1	500	H & V MOTORS
92	1	1	500	H & V MOTORS
93	1	1	500	H & V MOTORS
94	1	1	500	H & V MOTORS
95	1	1	500	H & V MOTORS
96	1	1	500	H & V MOTORS
97	1	1	500	H & V MOTORS
98	1	1	500	H & V MOTORS
99	1	1	500	H & V MOTORS
100	1	1	500	H & V MOTORS
TOTAL	13120	13120	13120	FEDERAL RESERVE BANK

TABLE: LOADS AND ENERGY DATA

CT	ENERGIZER	LOAD	WATTS	LOCATION
1	30	1	2250	UNIT B-A-B-1
2	3	1	2250	"B-2
3	1	1	2250	"B-3
4	1	1	2250	"B-4
5	1	1	2250	"B-5
6	1	1	2250	"B-6
7	1	1	2250	"B-7
8	1	1	2250	"B-8
9	1	1	2250	"B-9
10	1	1	2250	"B-10
11	1	1	2250	"B-11
12	70	1	1400	"B-12
13	1	1	1000	RECEPTACLES
14	1	1	1000	RECEPTACLES
15	1	1	1000	RECEPTACLES
16	1	1	1000	RECEPTACLES
17	1	1	1000	RECEPTACLES
18	1	1	1000	RECEPTACLES
19	1	1	1000	RECEPTACLES
20	1	1	1000	RECEPTACLES
21	1	1	1000	RECEPTACLES
22	1	1	1000	RECEPTACLES
23	1	1	1000	RECEPTACLES
24	1	1	1000	RECEPTACLES
25	1	1	1000	RECEPTACLES
26	1	1	1000	RECEPTACLES
27	30	2	500	H & V MOTORS
28	1	1	500	H & V MOTORS
29	1	1	500	H & V MOTORS
30	1	1	500	H & V MOTORS
31	1	1	500	H & V MOTORS
32	1	1	500	H & V MOTORS
33	1	1	500	H & V MOTORS
34	1	1	500	H & V MOTORS
35	1	1	500	H & V MOTORS
36	1	1	500	H & V MOTORS
37	1	1	500	H & V MOTORS
38	1	1	500	H & V MOTORS
39	1	1	500	H & V MOTORS
40	1	1	500	H & V MOTORS
41	1	1	500	H & V MOTORS
42	1	1	500	H & V MOTORS
43	1	1	500	H & V MOTORS
44	1	1	500	H & V MOTORS
45	1	1	500	H & V MOTORS
46	1	1	500	H & V MOTORS
47	1	1	500	H & V MOTORS
48	1	1	500	H & V MOTORS
49	1	1	500	H & V MOTORS
50	1	1	500	H & V MOTORS
51	1	1	500	H & V MOTORS
52	1	1	500	H & V MOTORS
53	1	1	500	H & V MOTORS
54	1	1	500	H & V MOTORS
55	1	1	500	H & V MOTORS
56	1	1	500	H & V MOTORS
57	1	1	500	H & V MOTORS
58	1	1	500	H & V MOTORS
59	1	1	500	H & V MOTORS
60	1	1	500	H & V MOTORS
61	1	1	500	H & V MOTORS
62	1	1	500	H & V MOTORS
63	1	1	500	H & V MOTORS
64	1	1	500	H & V MOTORS
65	1	1	500	H & V MOTORS
66	1	1	500	H & V MOTORS
67	1	1	500	H & V MOTORS
68	1	1	500	H & V MOTORS
69	1	1	500	H & V MOTORS
70	1	1	500	H & V MOTORS
71	1	1	500	H & V MOTORS
72	1	1	500	H & V MOTORS
73	1	1	500	H & V MOTORS
74	1	1	500	H & V MOTORS
75	1	1	500	H & V MOTORS
76	1	1	500	H & V MOTORS
77	1	1	500	H & V MOTORS
78	1	1	500	H & V MOTORS
79	1	1	500	H & V MOTORS
80	1	1	500	H & V MOTORS
81	1	1	500	H & V MOTORS
82	1	1	500	H & V MOTORS
83	1	1	500	H & V MOTORS
84	1	1	500	H & V MOTORS
85	1	1	500	H & V MOTORS
86	1	1	500	H & V MOTORS
87	1	1	500	H & V MOTORS
88	1	1	500	H & V MOTORS
89	1	1	500	H & V MOTORS
90	1	1	500	H & V MOTORS
91	1	1	500	H & V MOTORS
92	1	1	500	H & V MOTORS
93	1	1	500	H & V MOTORS
94	1	1	500	H & V MOTORS
95	1	1	500	H & V MOTORS
96	1	1	500	H & V MOTORS
97	1	1	500	H & V MOTORS
98	1	1	500	H & V MOTORS
99	1	1	500	H & V MOTORS
100	1	1	500	H & V MOTORS
TOTAL	13120	13120	13120	FEDERAL RESERVE BANK



KEY PLAN

20 9/25/57 26
 EDWARD LOWE
 ELECTRICAL ENGINEER
 3035 BERTH ST.
 FRESNO CALIF. 93711

OFFICE OF SUPERINTENDENT OF SCHOOLS
 STATE OF CALIFORNIA
 DEPARTMENT OF PUBLIC WORKS
 DIVISION OF ARCHITECTURE

STATE OF CALIFORNIA
 DEPARTMENT OF PUBLIC WORKS
 DIVISION OF ARCHITECTURE
 APPROVED
 DATE 10/1/57

CHECK AND VERIFY ALL DIMENSIONS AND CONDITIONS AT JOB SITE BEFORE PROCEEDING WITH THE WORK. REPORT ANY DISCREPANCIES TO THE ARCHITECT.

WASHINGTON JR. HIGH SCHOOL
 BAKERSFIELD CITY SCHOOL DISTRICT
 BAKERSFIELD CALIFORNIA

ERNEST L. MCCOY A.I.A. ARCHITECT
 2811 H STREET
 BAKERSFIELD

DATE 10/1/57
 DRAWN BY
 CHECKED BY