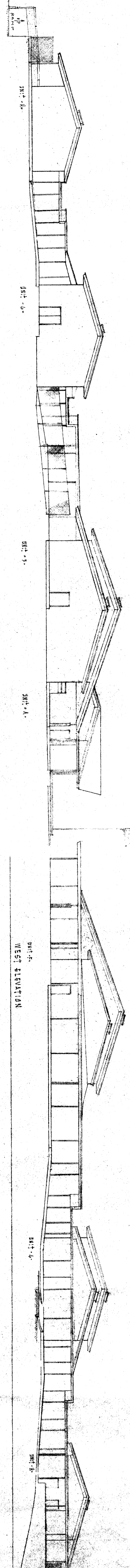
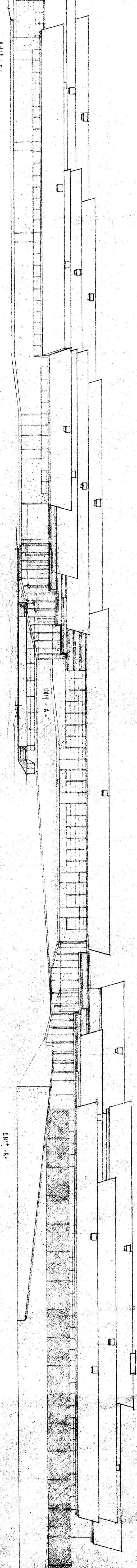


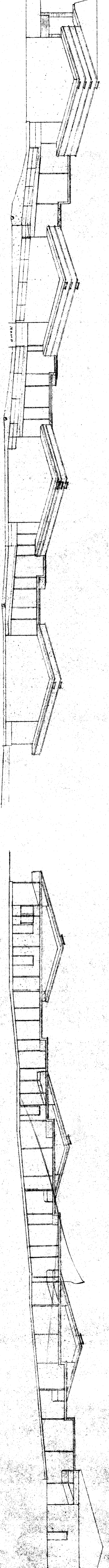
UNIT - 24
NORTH ELEVATION



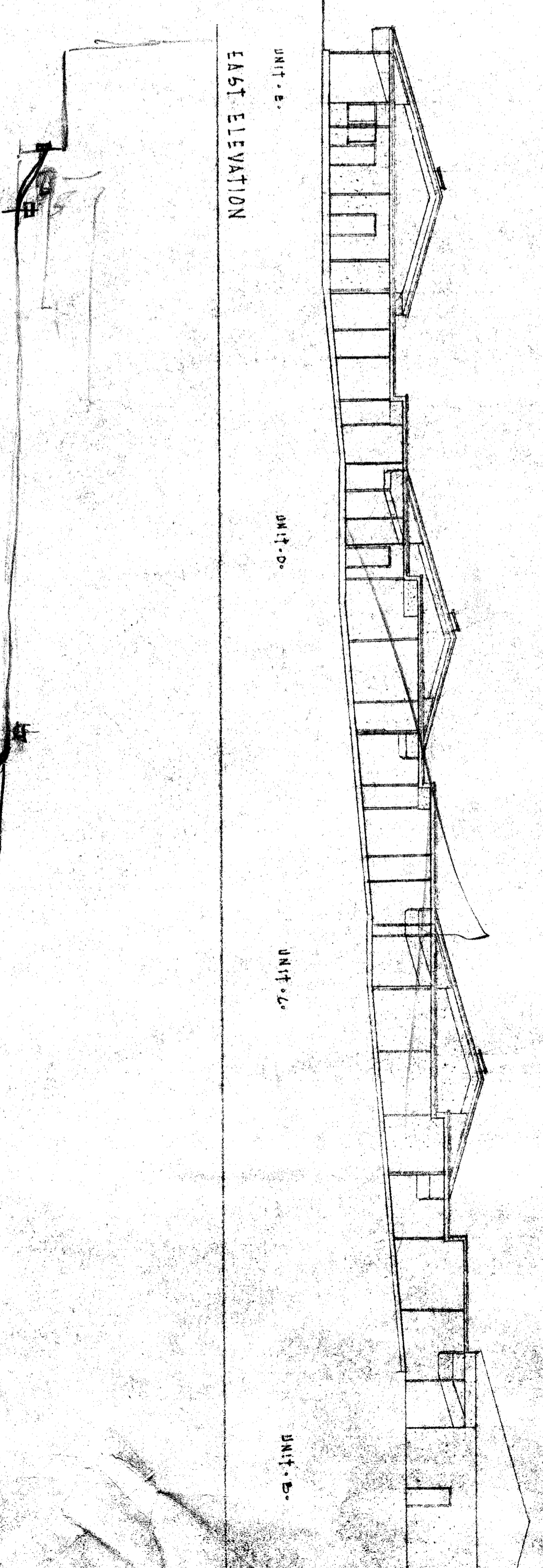
UNIT - 22
EAST ELEVATION



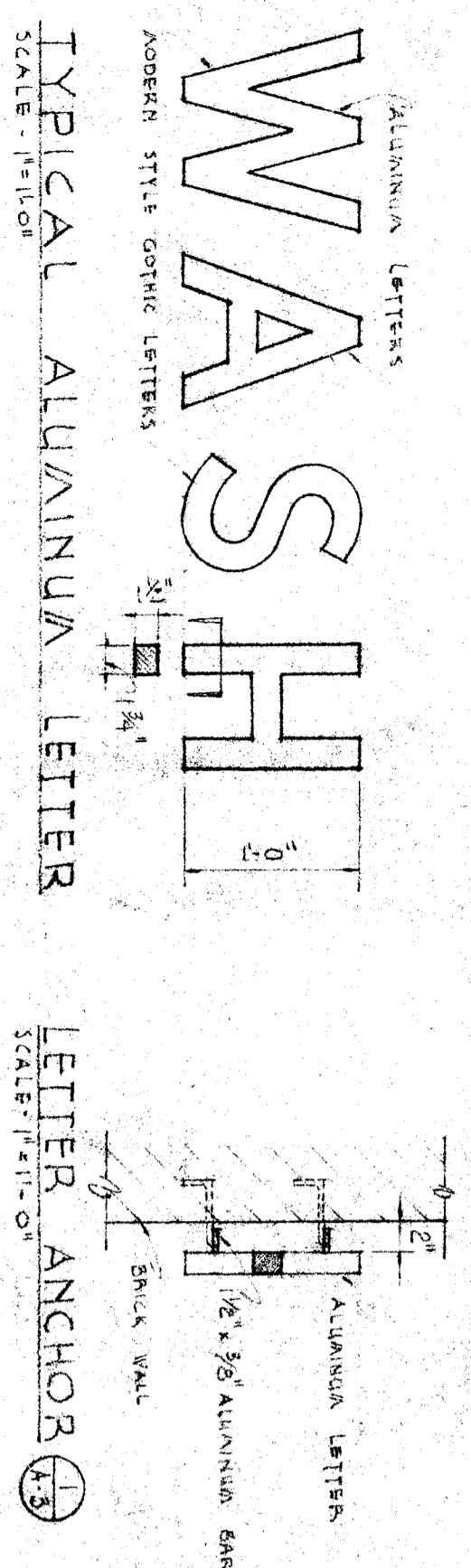
UNIT - 21
SOUTH ELEVATION



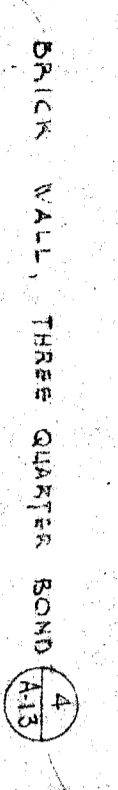
UNIT - 19
WEST ELEVATION



UNIT - 18
EAST ELEVATION



ALUMINUM LETTERS
MODERN STYLE GOTHIC LETTERS
TYPICAL ALUMINUM LETTER
LETTER ANCHOR



BRICK WALL, THREE QUARTER BOND

ELEVATION SHOWING LETTER LOCATION ON BRICK WALL UNIT 'E'

DATE: 30/1/54
DRAWN BY: [Signature]
CHECKED BY: [Signature]

OFFICE OF SUPERINTENDENT OF SCHOOLS
DATE: [Blank]

STATE OF CALIFORNIA
DEPARTMENT OF PUBLIC WORKS
DIVISION OF ARCHITECTURE

STATE OF CALIFORNIA
DIVISION OF ARCHITECTURE
APPLICATION APPROVED
NO. 12120

BAKERSFIELD CITY SCHOOLS
1600 K. ST., BAKERSFIELD, CALIF.
BOARD OF EDUCATION

APPROVED: [Blank]
DATE: [Blank]

WASHINGTON, JR. HIGH 544001
BAKERSFIELD CITY 644001 DISTRICT
BAKERSFIELD 2411502114

ERNEST L. MCCOY A.I.A.
ARCHITECT
2811 H STREET
BAKERSFIELD
CALIFORNIA

EXTENDED ELEVATIONS