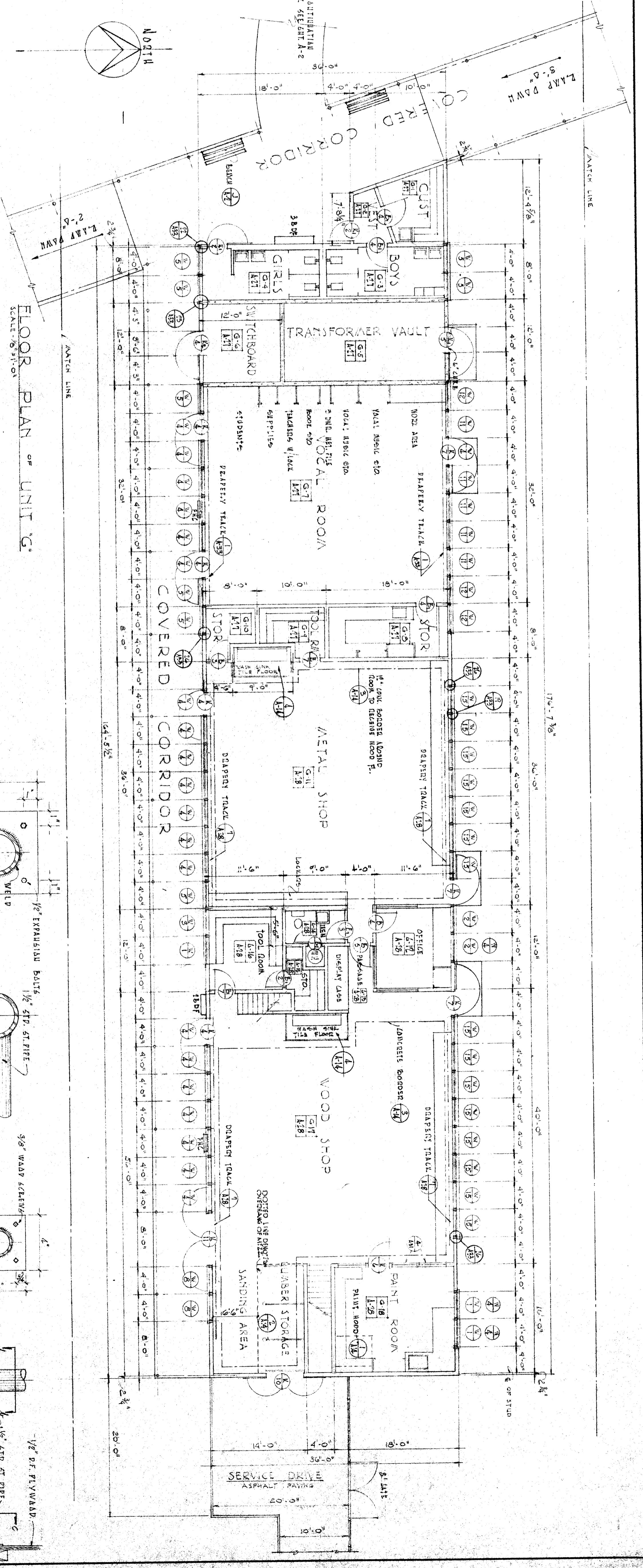
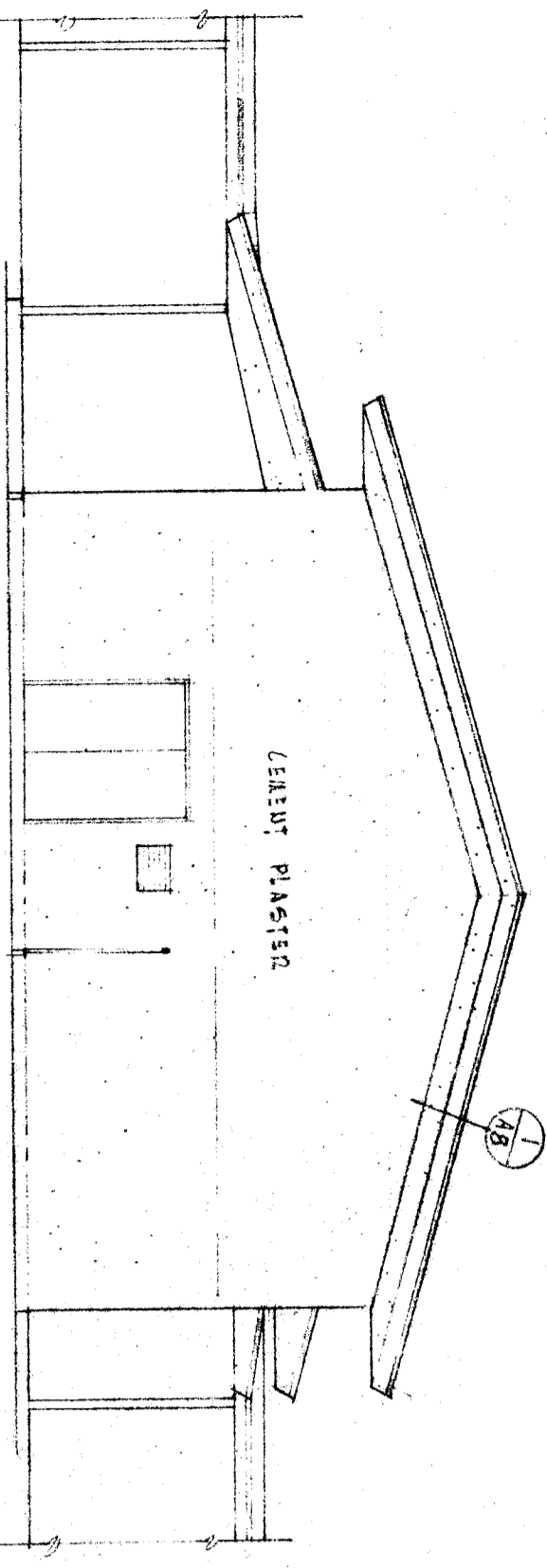


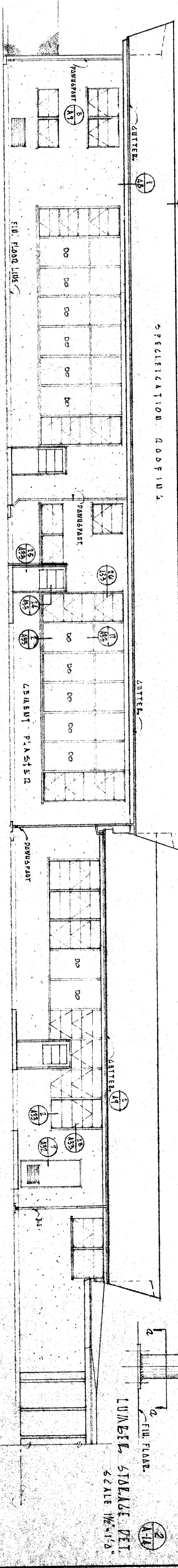
PLAN of MEZZANINE SCALE: 1/8" = 1'-0"



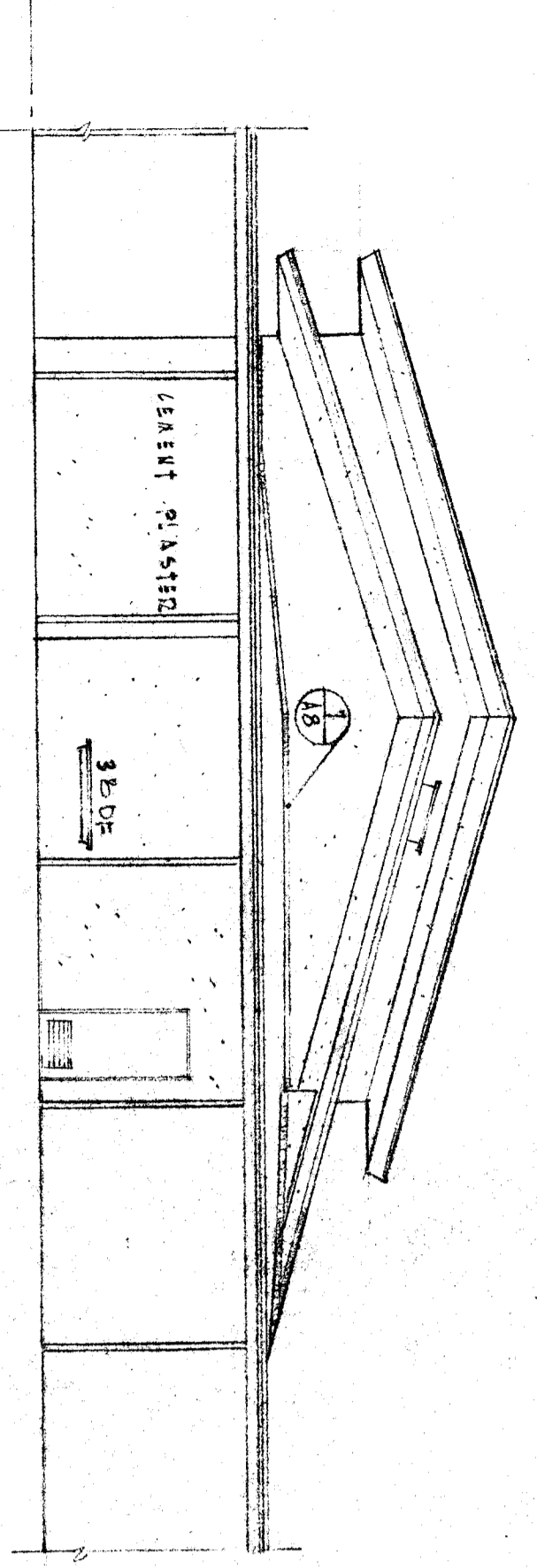
FLOOR PLAN of UNIT 'G' SCALE: 1/8" = 1'-0"



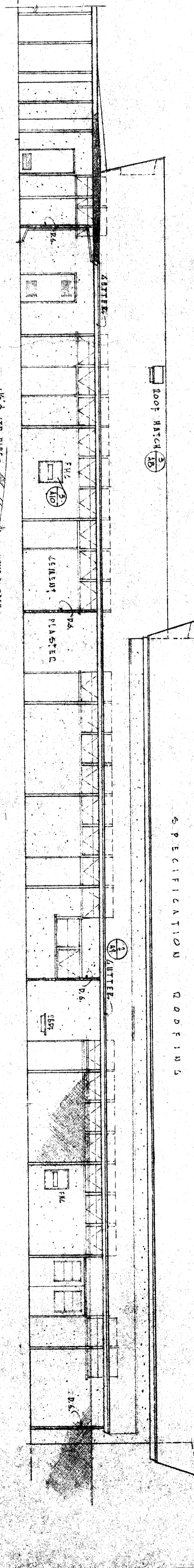
EAST ELEVATION of UNIT 'G' SCALE: 1/8" = 1'-0"



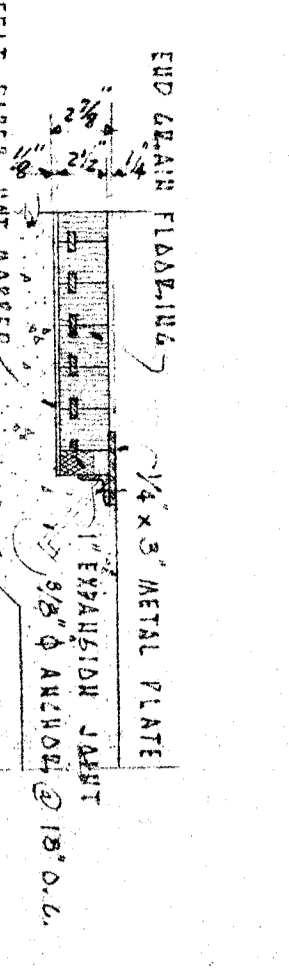
NORTH ELEVATION of UNIT 'G' SCALE: 1/8" = 1'-0"



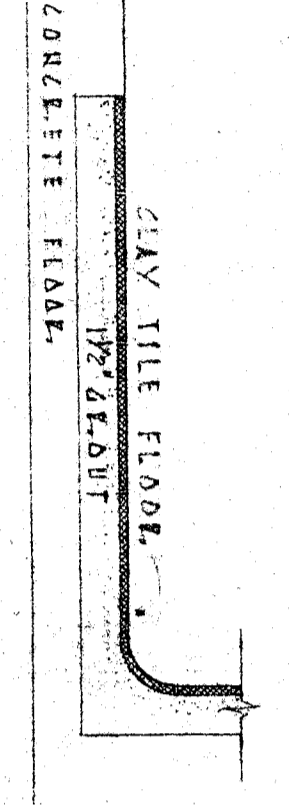
WEST ELEVATION of UNIT 'G' SCALE: 1/8" = 1'-0"



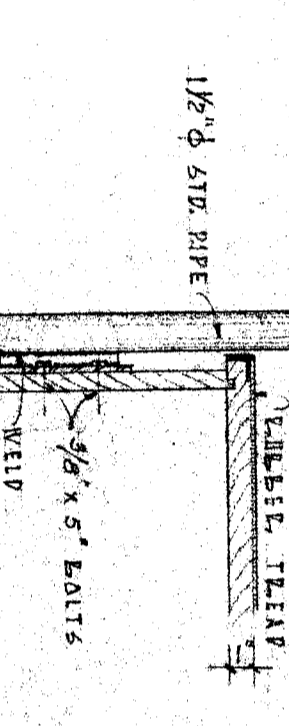
SOUTH ELEVATION of UNIT 'G' SCALE: 1/8" = 1'-0"



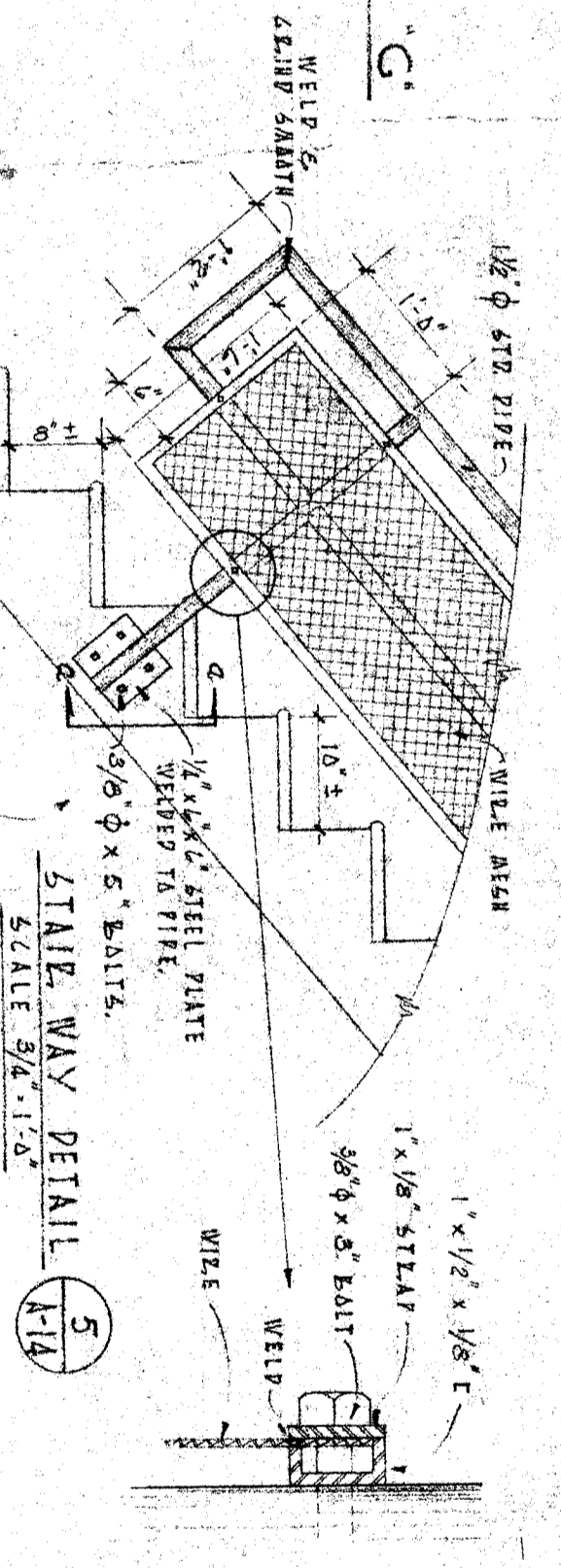
END GLENN FLOOR DETAIL SCALE: 1/4" = 1'-0"



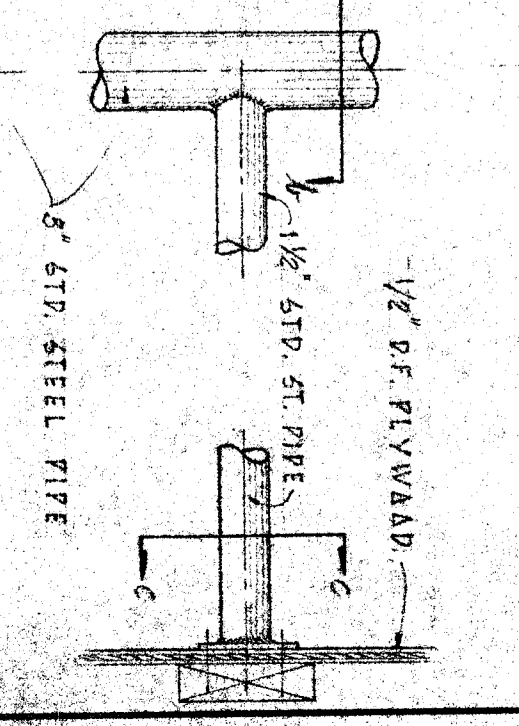
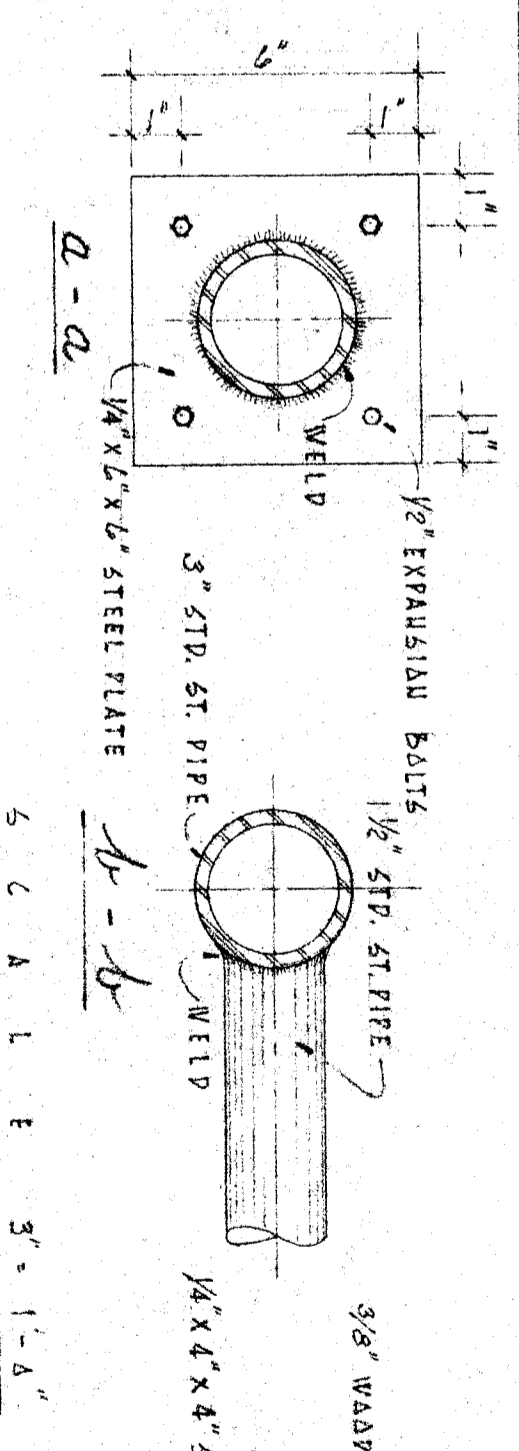
TILE FLOOR @ WASH BASIN SCALE: 1/4" = 1'-0"



SECTION D-D SCALE: 1/4" = 1'-0"



KEY PLAN



PROJECT NO. 126 DATE 8/15/54 BY [Signature] CHECKED [Signature]	OFFICE OF SUPERINTENDENT OF SCHOOLS APPROVED [Signature] DATE	STATE OF CALIFORNIA DEPARTMENT OF PUBLIC WORKS DIVISION OF ARCHITECTURE NO. 126 DATE 8/15/54 BY [Signature] CHECKED [Signature]	BAKERSFIELD CITY SCHOOLS 1600 E. ST. BAKERSFIELD CALIF. BOARD OF EDUCATION APPROVED [Signature] DATE	CHECK AND VERIFY ALL DIMENSIONS AND CONDITIONS AT JOB SITE BEFORE PROCEEDING WITH THE WORK. REPORT ANY DISCREPANCIES TO THE ARCHITECT. FLOOD PLAN & EXTERIOR ELEVATIONS of UNIT 'G'	WASHINGTON JR. HIGH SCHOOL BAKERSFIELD CITY SCHOOL DISTRICT NOBLE AVENUE BAKERSFIELD CALIFORNIA ARCHITECT ERNEST L. MCCOY 2811 H STREET BAKERSFIELD CALIFORNIA	JOB NO. 54-1 DATE 8 10 1954 DRAWN BY [Signature] CHECKED BY [Signature]
--	---	---	--	--	---	--