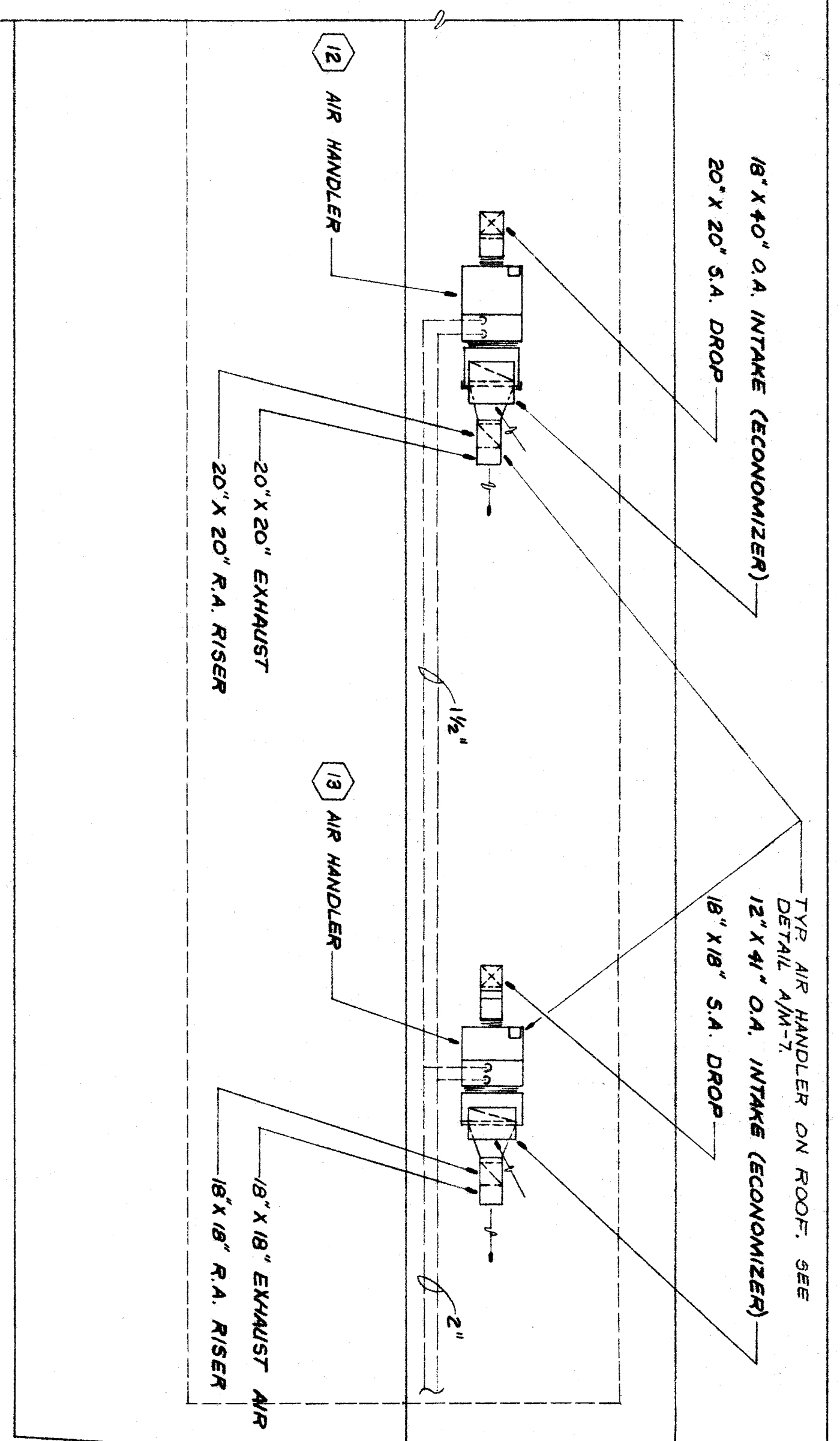
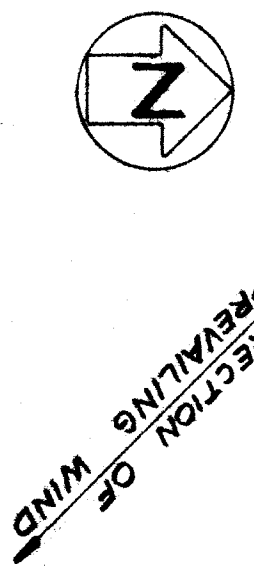
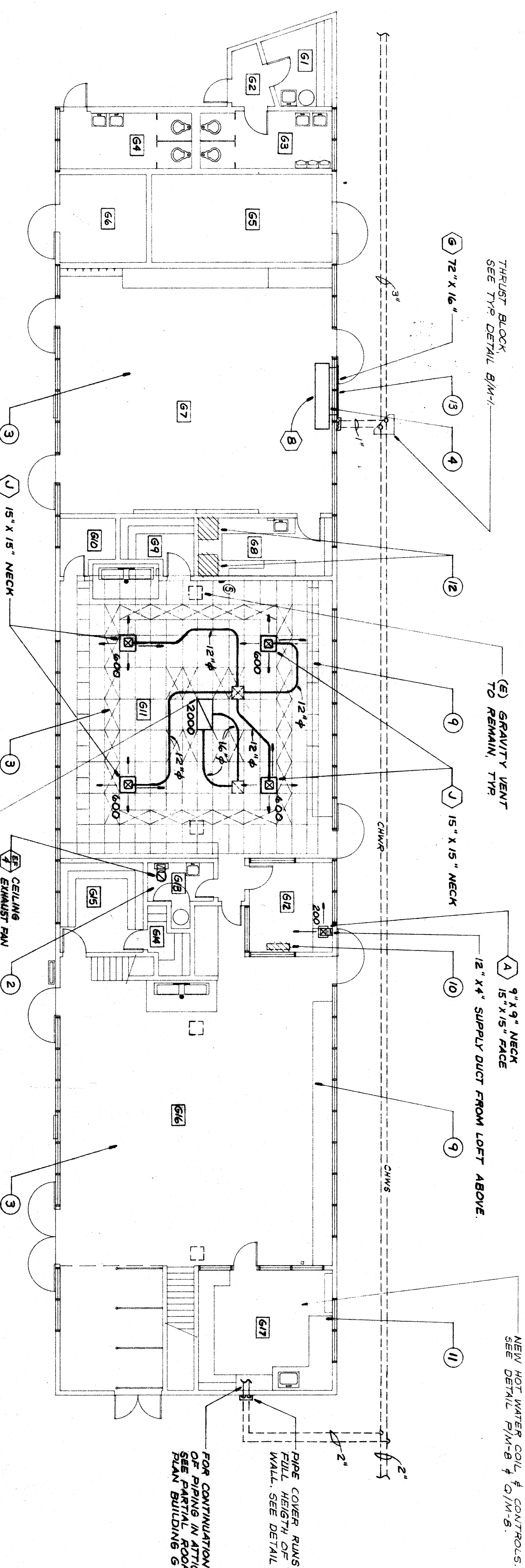
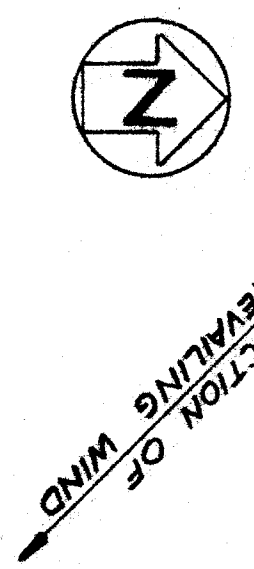


PARTIAL ROOF PLAN BUILDING G
SCALE: 1/8" = 1'-0"

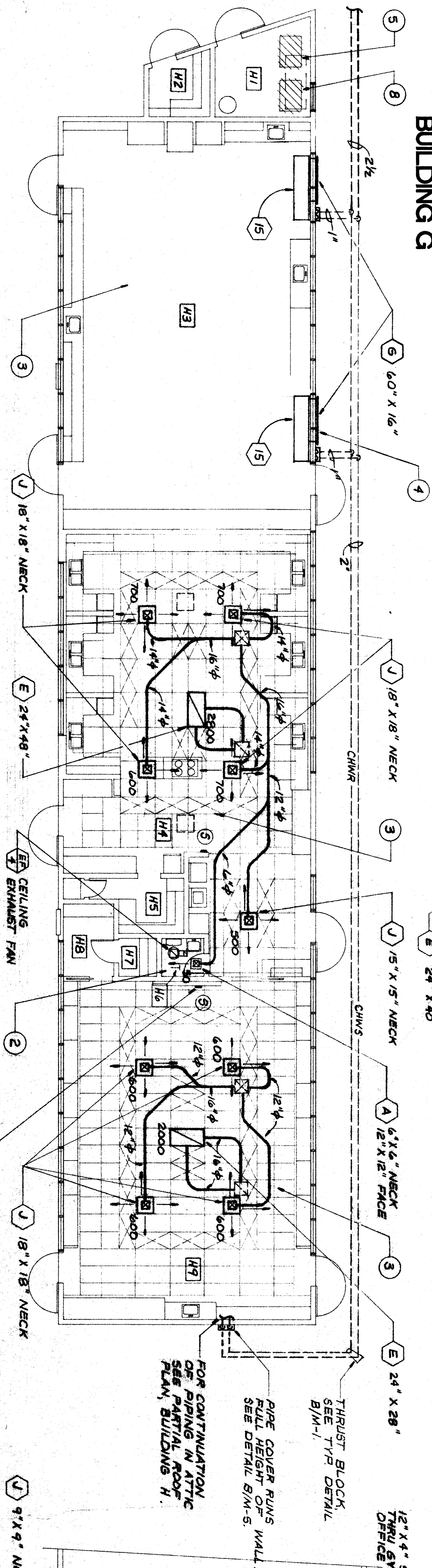
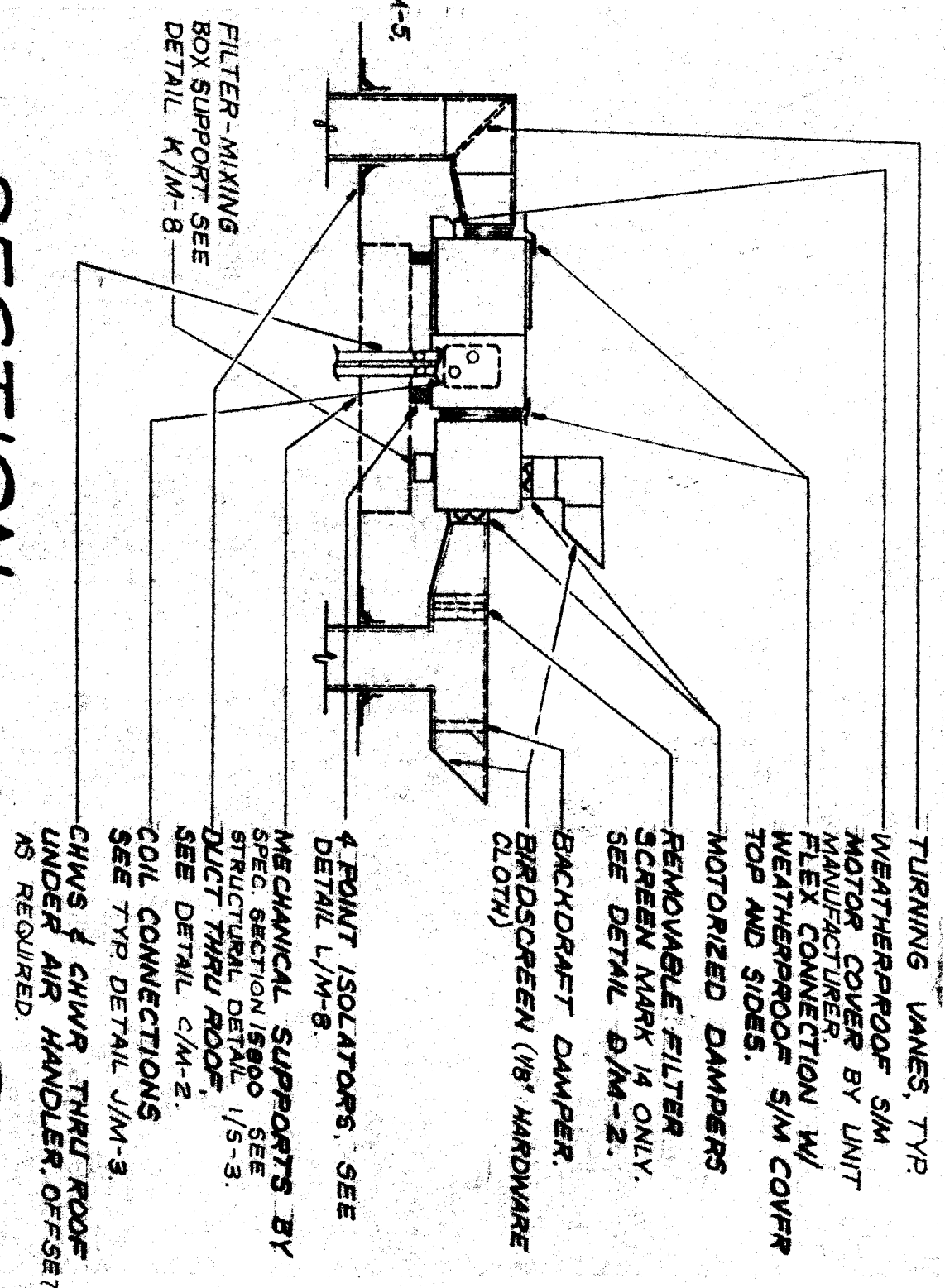


PARTIAL ROOF PLAN BUILDING H
SCALE: 1/8" = 1'-0"



BUILDING G

SECTION
NO SCALE

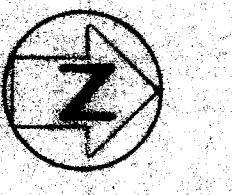


BUILDING H

BUILDING G LOFT

AIR CONDITIONING PLANS

SCALE: 1/8" = 1'-0"



IDENTIFICATION STAMP
Department of General Services
Project No. 13-889
13-889
13-889
13-889

| | | |
|------|------------|---|
| DATE | APPROVED | BAKERSFIELD CITY SCHOOL DISTRICT BOARD OF EDUCATION |
| DATE | ISSUED FOR | 9-3-51 BEDDING |
| DATE | REVISIONS | |

M-7

RENFRO RUSSELL & ASSOCIATES
Architecture • Engineering • Interior Design/Space Planning

Donald W. Renfro, AIA
Mark E. Russell, AIA
4400 Rockwood Highway, Suite 300, Rockwood, California 92385 (909) 387-7074

CONSULTANTS

FRANK MITCHELL, ARCHITECT, ESTABLISHED 1917/19
JOHN FRANK MITCHELL, INC.
CONSULTING MECHANICAL ENGINEERS
PHONE 444 WEST JEFFERSON STREET, 101
92501, LOS ANGELES, CALIFORNIA 90015

PROJECT
BAKERSFIELD CITY SCHOOL DISTRICT
WASHINGTON JUNIOR HIGH SCHOOL MODERNIZATION