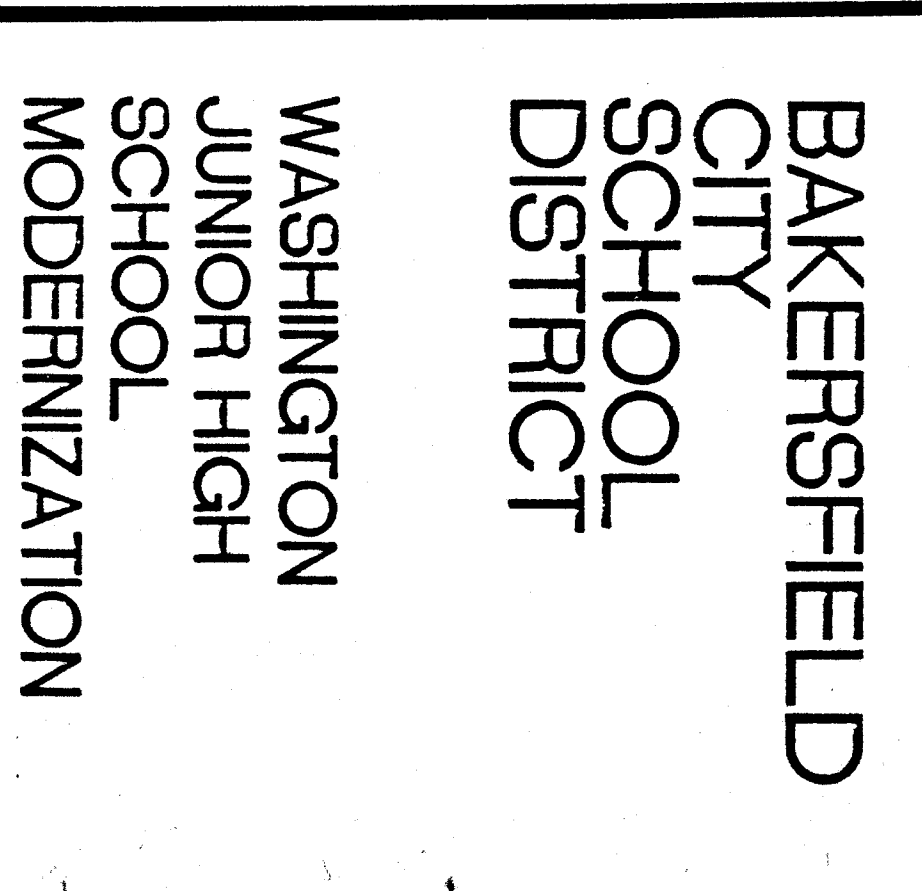


Donald W. Renfro, AIA  
 Mark E. Russell, AIA  
 C-288  
 C-2728

4400 S. Orange Ave., Suite 304, Anaheim, California 92804-6601, 714/771-7015  
 CONSULTANTS

**PREPARED BY:**  
**JOHN FRANK MITCHELL, INC.**  
 CONSULTING MECHANICAL ENGINEERS  
 9250 29th  
 IRVINE, CALIFORNIA 92718

**PROJECT:**  
**BAKERSFIELD CITY SCHOOL DISTRICT**  
**WASHINGTON JUNIOR HIGH SCHOOL MODERNIZATION**



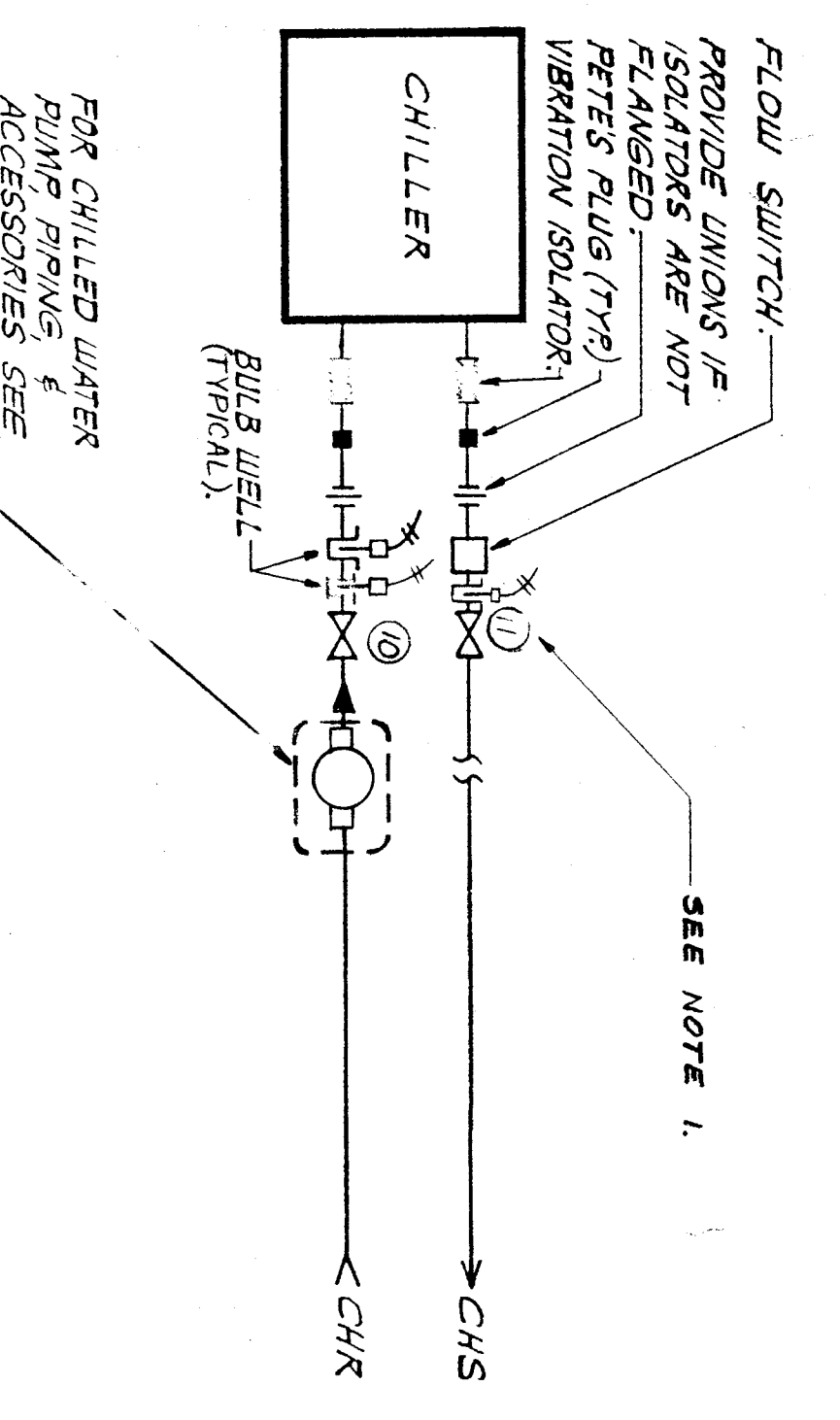
THE ABOVE INFORMATION IS FOR GENERAL INFORMATION ONLY. THE CONTRACTOR SHALL BE RESPONSIBLE FOR VERIFYING THE ACCURACY OF THE INFORMATION AND FOR OBTAINING ALL NECESSARY PERMITS AND APPROVALS FROM THE LOCAL AUTHORITIES. THE CONTRACTOR SHALL BE RESPONSIBLE FOR OBTAINING ALL NECESSARY PERMITS AND APPROVALS FROM THE LOCAL AUTHORITIES. THE CONTRACTOR SHALL BE RESPONSIBLE FOR OBTAINING ALL NECESSARY PERMITS AND APPROVALS FROM THE LOCAL AUTHORITIES.

BAKERSFIELD CITY SCHOOL DISTRICT BOARD OF EDUCATION

DATE	APPROVED
4-2-81	BIDINGS

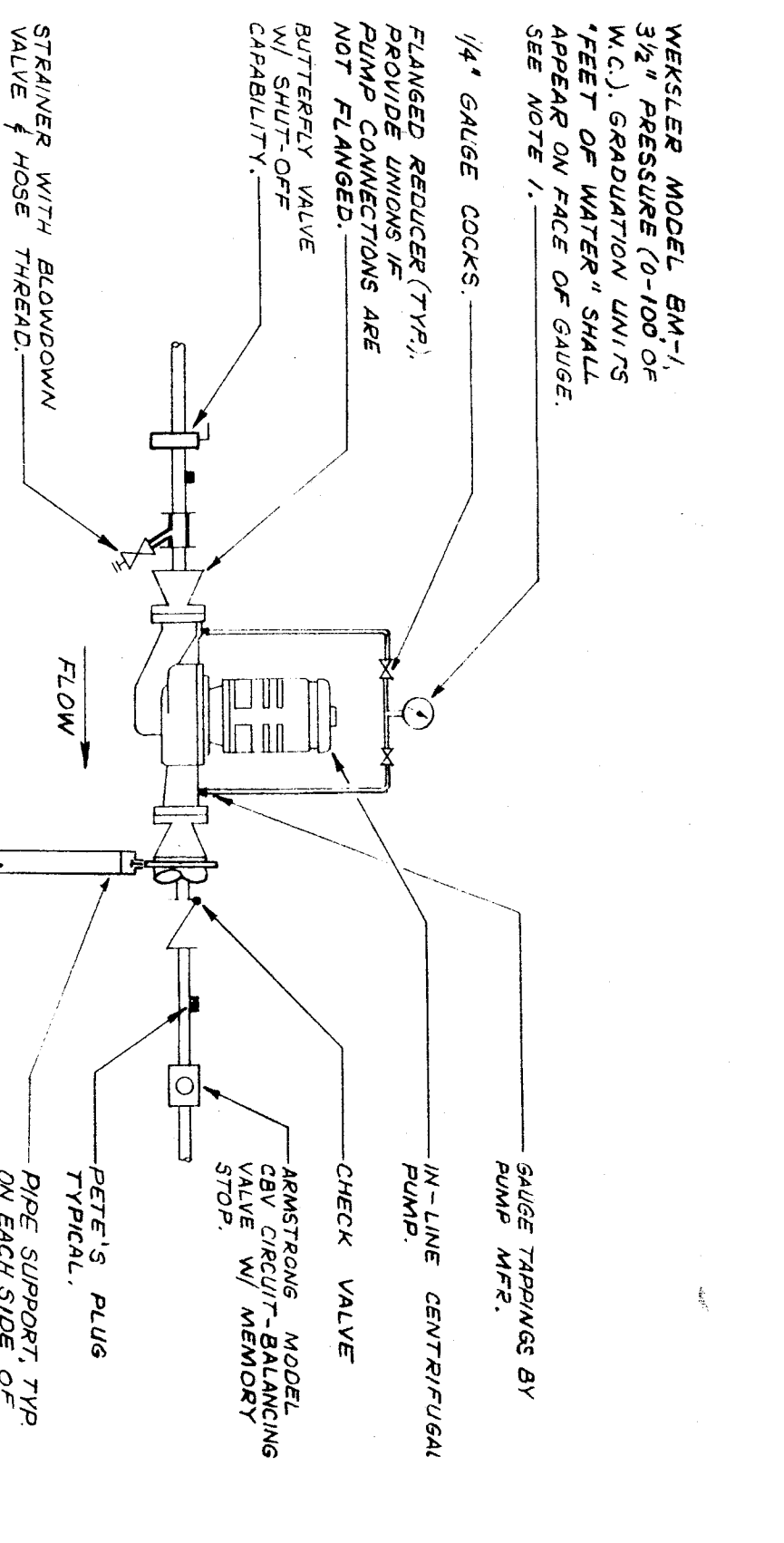
DATE	REVISIONS

APPROVED ARCHITECT: *Thomas W. Renfro*  
 CHECKED BY: *M.B.*  
 DRAWN BY: *M.B.*  
 PROJECT NO: *8-181*  
 SHEET NUMBER: **M-3**  
 OF 8 SHEETS



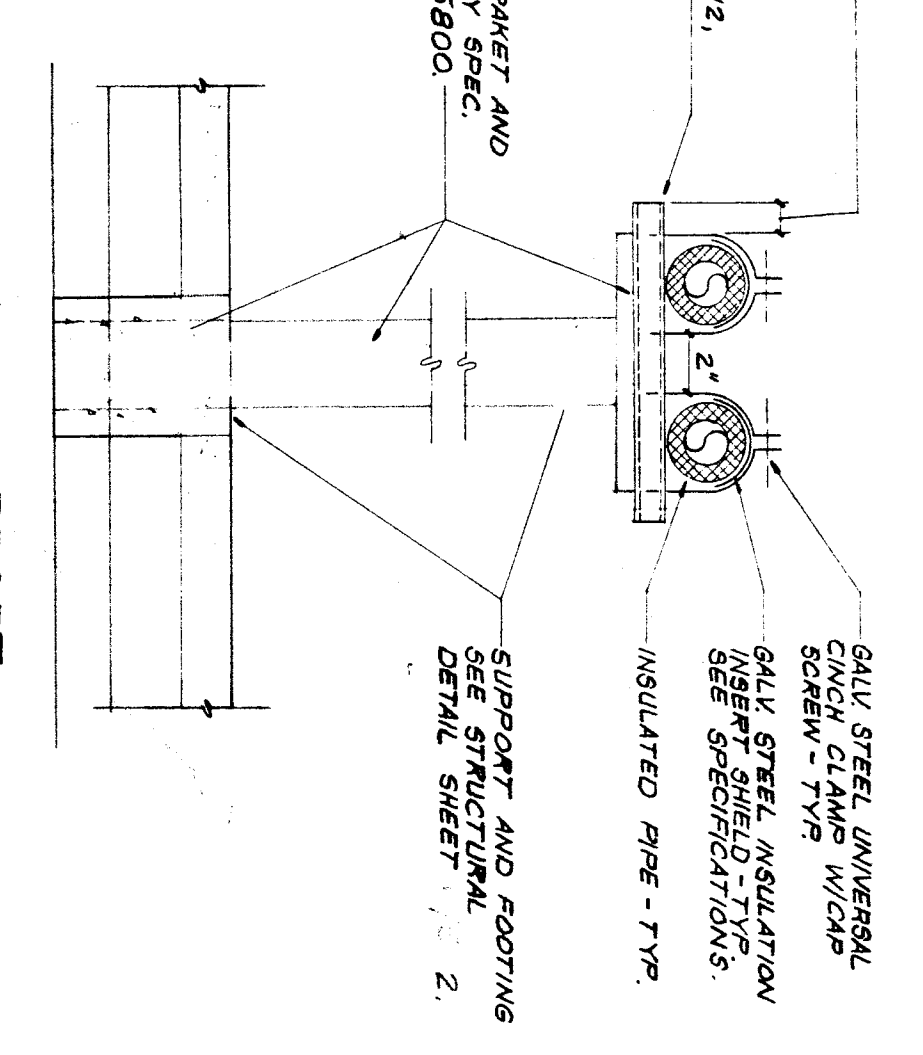
**DETAIL C**  
**CHILLER PIPING DIAGRAM**  
 NO SCALE

NOTES:  
 1. SEE INPUT CONTROL POINT SCHEDULE "S" SEE 11-4 FOR PIPING CONNECTIONS.

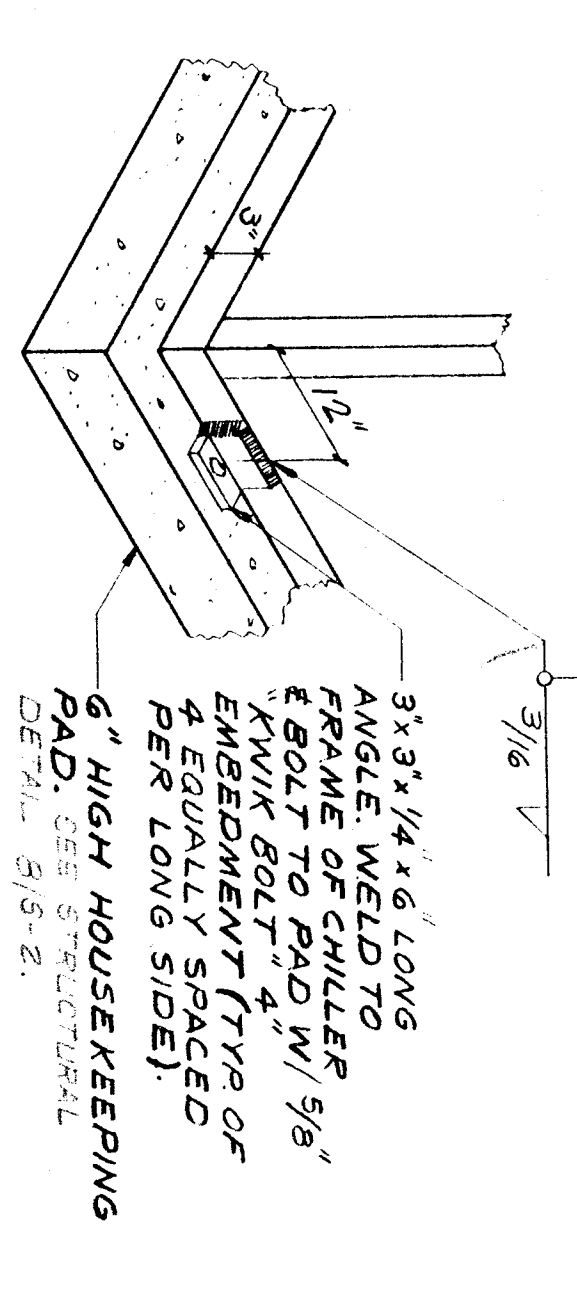


**DETAIL B**  
**IN-LINE PUMP PIPING**  
 NO SCALE

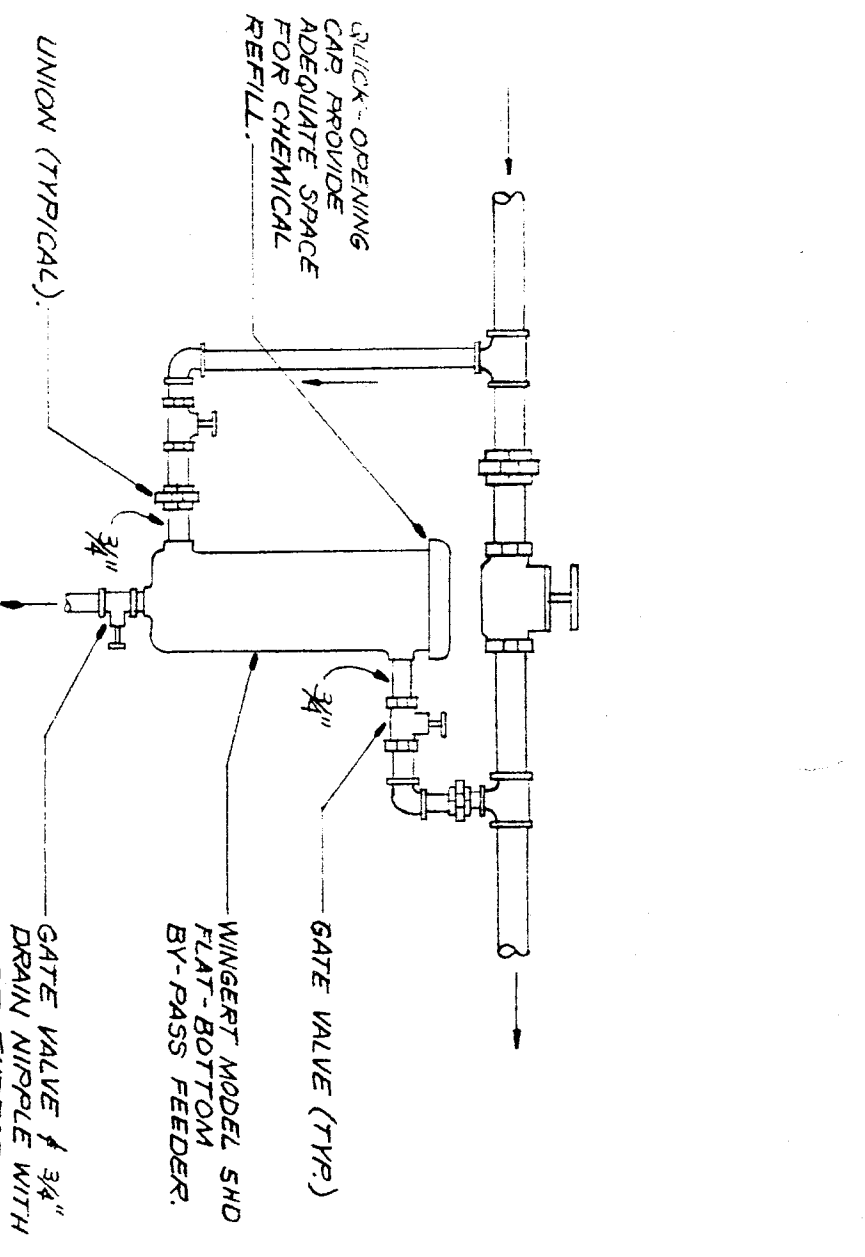
NOTES:  
 1. GAUGE / GAUGE PIPING SHALL BE OFFSET FROM FACE OF PUMP SHEET.



**DETAIL F**  
**PIPE SUPPORT**  
 NO SCALE

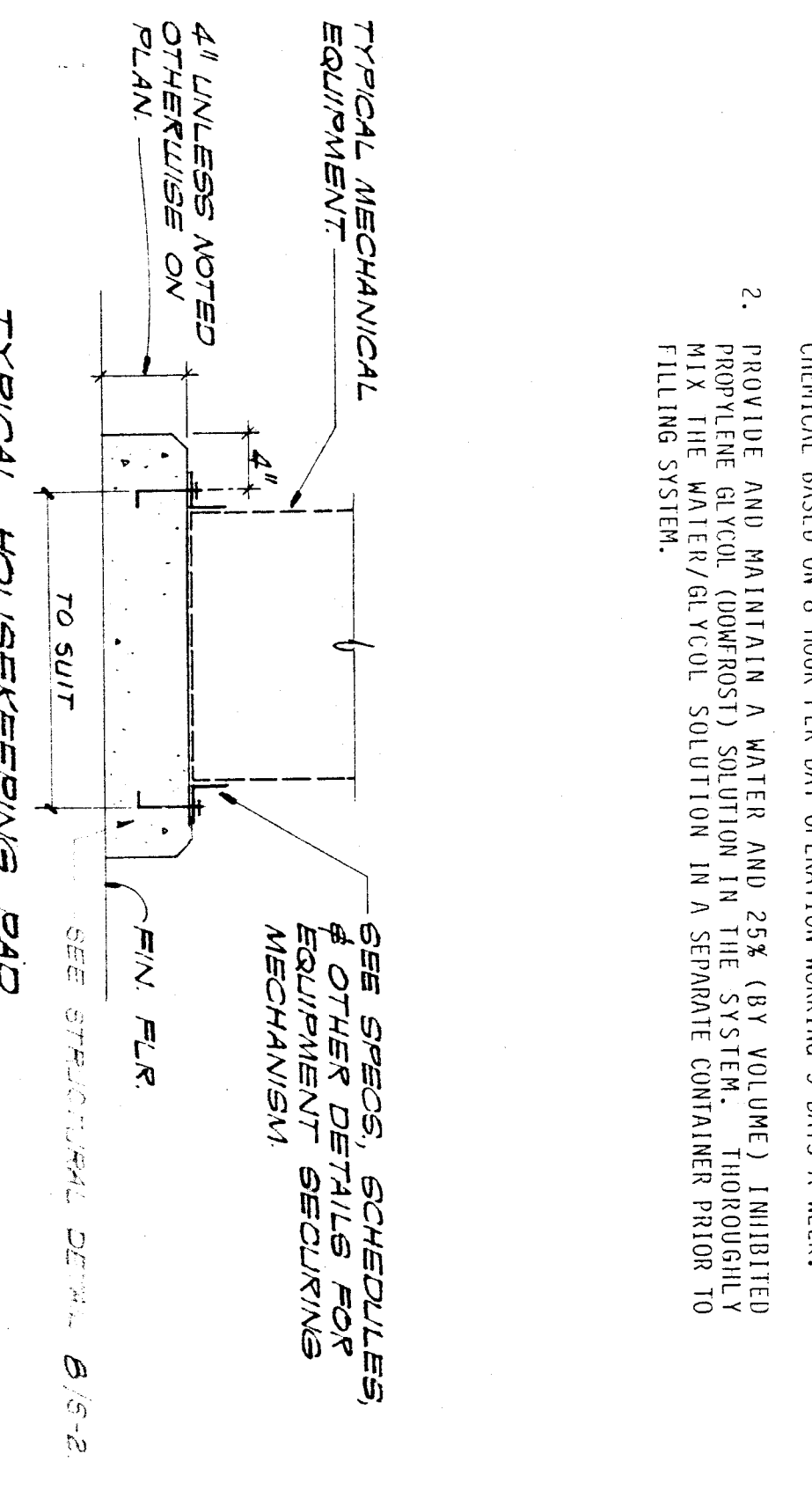


**DETAIL G**  
**CHILLER ANCHORAGE**  
 NO SCALE



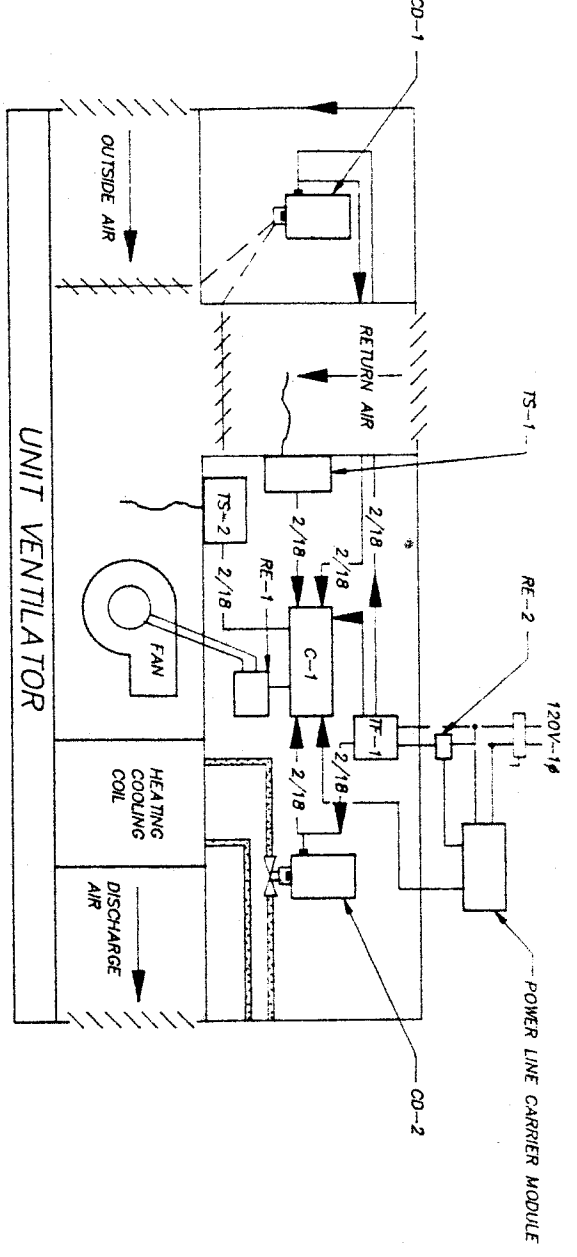
**DETAIL D**  
**CHEMICAL FEEDER CONNECTIONS**  
 NO SCALE

NOTES:  
 1. EQUIPMENT AND PIPING SYSTEM SHALL BE THOROUGHLY CLEANED TO REMOVE OIL, GREASE, PIPE DIRT AND ORGANIC MATTER BEFORE START-UP. SEE SPECIFICATIONS FOR EXACT CLEANING PROCEDURES. CLEANING SHALL BE CONDITION DROPPED ON TO HOLD FOR 24 HOURS BEFORE START-UP.  
 2. PROVIDE AND MAINTAIN A WATER AND 25% (BY VOLUME) DILUTED SOLUTION (COMPOST) SOLUTION IN THE TREATMENT CONTAINER PRIOR TO FILLING SYSTEM.



**DETAIL H**  
**TYPICAL HOUSEKEEPING PAD**  
 NO SCALE

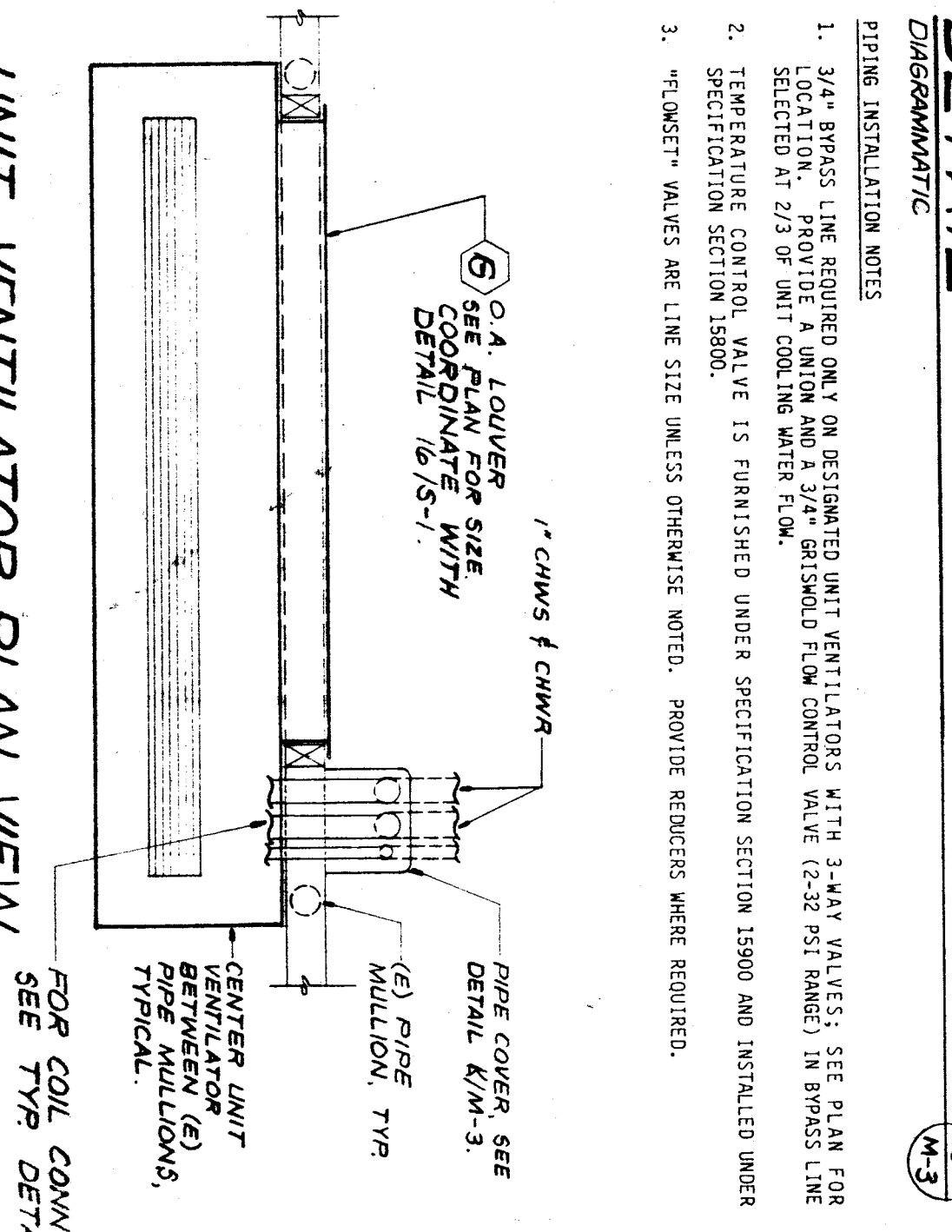
SECTION 09300 - HOUSEKEEPING PADS BY SPEC SECTIONS 09300 & 09210.



NO.	DESCRIPTION	RECORD
1	UNIT VENTILATOR	B, C, D, E, F, G, H, I, J, K, L, M, N, O, P, Q, R, S, T, U, V, W, X, Y, Z, AA, AB, AC, AD, AE, AF, AG, AH, AI, AJ, AK, AL, AM, AN, AO, AP, AQ, AR, AS, AT, AU, AV, AW, AX, AY, AZ, BA, BB, BC, BD, BE, BF, BG, BH, BI, BJ, BK, BL, BM, BN, BO, BP, BQ, BR, BS, BT, BU, BV, BW, BX, BY, BZ, CA, CB, CC, CD, CE, CF, CG, CH, CI, CJ, CK, CL, CM, CN, CO, CP, CQ, CR, CS, CT, CU, CV, CW, CX, CY, CZ, DA, DB, DC, DD, DE, DF, DG, DH, DI, DJ, DK, DL, DM, DN, DO, DP, DQ, DR, DS, DT, DU, DV, DW, DX, DY, DZ, EA, EB, EC, ED, EE, EF, EG, EH, EI, EJ, EK, EL, EM, EN, EO, EP, EQ, ER, ES, ET, EU, EV, EW, EX, EY, EZ, FA, FB, FC, FD, FE, FF, FG, FH, FI, FJ, FK, FL, FM, FN, FO, FP, FQ, FR, FS, FT, FU, FV, FW, FX, FY, FZ, GA, GB, GC, GD, GE, GF, GG, GH, GI, GJ, GK, GL, GM, GN, GO, GP, GQ, GR, GS, GT, GU, GV, GW, GX, GY, GZ, HA, HB, HC, HD, HE, HF, HG, HH, HI, HJ, HK, HL, HM, HN, HO, HP, HQ, HR, HS, HT, HU, HV, HW, HX, HY, HZ, IA, IB, IC, ID, IE, IF, IG, IH, II, IJ, IK, IL, IM, IN, IO, IP, IQ, IR, IS, IT, IU, IV, IW, IX, IY, IZ, JA, JB, JC, JD, JE, JF, JG, JH, JI, JJ, JK, JL, JM, JN, JO, JP, JQ, JR, JS, JT, JU, JV, JW, JX, JY, JZ, KA, KB, KC, KD, KE, KF, KG, KH, KI, KJ, KK, KL, KM, KN, KO, KP, KQ, KR, KS, KT, KU, KV, KW, KX, KY, KZ, LA, LB, LC, LD, LE, LF, LG, LH, LI, LJ, LK, LL, LM, LN, LO, LP, LQ, LR, LS, LT, LU, LV, LW, LX, LY, LZ, MA, MB, MC, MD, ME, MF, MG, MH, MI, MJ, MK, ML, MM, MN, MO, MP, MQ, MR, MS, MT, MU, MV, MW, MX, MY, MZ, NA, NB, NC, ND, NE, NF, NG, NH, NI, NJ, NK, NL, NM, NO, NP, NQ, NR, NS, NT, NU, NV, NW, NX, NY, NZ, OA, OB, OC, OD, OE, OF, OG, OH, OI, OJ, OK, OL, OM, ON, OO, OP, OQ, OR, OS, OT, OU, OV, OW, OX, OY, OZ, PA, PB, PC, PD, PE, PF, PG, PH, PI, PJ, PK, PL, PM, PN, PO, PP, PQ, PR, PS, PT, PU, PV, PW, PX, PY, PZ, QA, QB, QC, QD, QE, QF, QG, QH, QI, QJ, QK, QL, QM, QN, QO, QP, QQ, QR, QS, QT, QU, QV, QW, QX, QY, QZ, RA, RB, RC, RD, RE, RF, RG, RH, RI, RJ, RK, RL, RM, RN, RO, RP, RQ, RR, RS, RT, RU, RV, RW, RX, RY, RZ, SA, SB, SC, SD, SE, SF, SG, SH, SI, SJ, SK, SL, SM, SN, SO, SP, SQ, SR, SS, ST, SU, SV, SW, SX, SY, SZ, TA, TB, TC, TD, TE, TF, TG, TH, TI, TJ, TK, TL, TM, TN, TO, TP, TQ, TR, TS, TT, TU, TV, TW, TX, TY, TZ, UA, UB, UC, UD, UE, UF, UG, UH, UI, UJ, UK, UL, UM, UN, UO, UP, UQ, UR, US, UT, UY, UV, UW, UX, UZ, VA, VB, VC, VD, VE, VF, VG, VH, VI, VJ, VK, VL, VM, VN, VO, VP, VQ, VR, VS, VT, VU, VV, VW, VX, VY, VZ, WA, WB, WC, WD, WE, WF, WG, WH, WI, WJ, WK, WL, WM, WN, WO, WP, WQ, WR, WS, WT, WU, WV, WW, WX, WY, WZ, XA, XB, XC, XD, XE, XF, XG, XH, XI, XJ, XK, XL, XM, XN, XO, XP, XQ, XR, XS, XT, XU, XV, XW, XX, XY, XZ, YA, YB, YC, YD, YE, YF, YG, YH, YI, YJ, YK, YL, YM, YN, YO, YP, YQ, YR, YS, YT, YU, YV, YW, YX, YZ, ZA, ZB, ZC, ZD, ZE, ZF, ZG, ZH, ZI, ZJ, ZK, ZL, ZM, ZN, ZO, ZP, ZQ, ZR, ZS, ZT, ZU, ZV, ZW, ZX, ZY, ZZ

**DETAIL I**  
**UNIT VENTILATOR CONTROL DIAGRAM**  
 DIAGRAMMATIC

UNIT VENTILATOR SEQUENCE OF OPERATION  
 THE UNIT VENTILATOR SHALL BE OPERATED BY THE CONTROL SYSTEM. THE CONTROL SYSTEM SHALL BE RESPONSIBLE FOR THE SEQUENCE OF OPERATION. THE CONTROL SYSTEM SHALL BE RESPONSIBLE FOR THE SEQUENCE OF OPERATION. THE CONTROL SYSTEM SHALL BE RESPONSIBLE FOR THE SEQUENCE OF OPERATION.

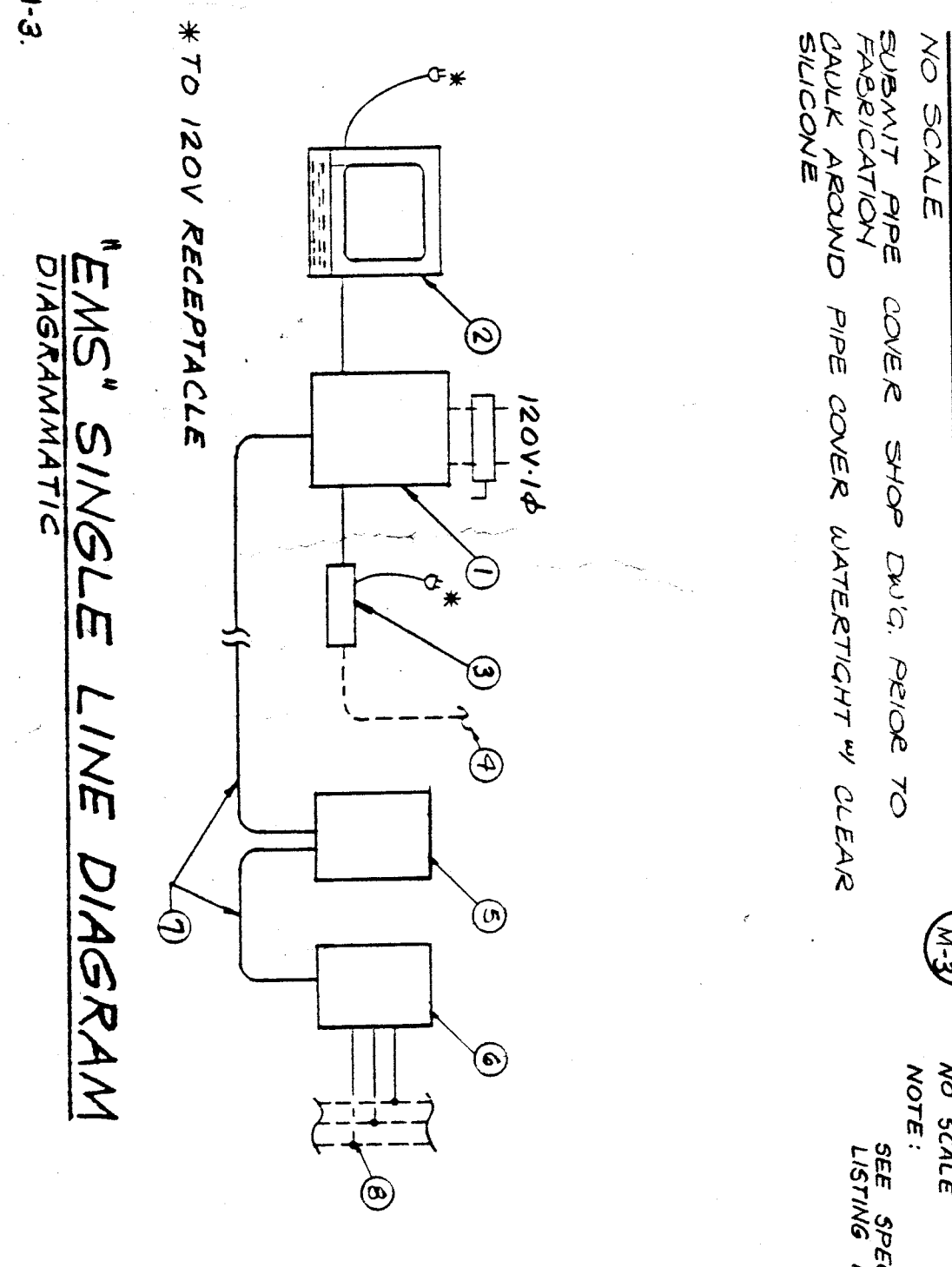


**DETAIL A**  
**UNIT VENTILATOR & FAN COIL PIPING CONNECTIONS**  
 DIAGRAMMATIC

NOTES:  
 1. 2" AIR BRASS LINE REQUIRED ONLY ON DESIGNATED UNIT VENTILATORS WITH 1.0 AIR WATTS. SEE UNIT VENTILATOR SPECIFICATIONS FOR UNIT VENTILATOR MODEL AND AIR WATTS. AIR BRASS LINE SELECTED IN 2" OF UNIT COILING WITH FLOW.  
 2. TEMPERATURE CONTROL VALVE IS FURNISHED UNDER SPECIFICATION SECTION 15800 AND INSTALLED UNDER SPECIFICATION SECTION 15800.  
 3. TEMPERATURE VALVES ARE LINE SIZE UNLESS OTHERWISE NOTED. PROVIDE RECEIVERS WHERE REQUIRED.

**DETAIL M**  
**UNIT VENTILATOR PLAN VIEW**  
 NO SCALE

FOR COIL COILING SEE TYPE Y DETAIL JM-3.



**DETAIL K**  
**EAST SINGLE LINE DIAGRAM**  
 DIAGRAMMATIC

NOTE: TO 120V RECEPTACLE

**DETAIL L**  
**UNIT VENTILATOR PLAN VIEW**  
 NO SCALE

FOR COIL COILING SEE TYPE Y DETAIL JM-3.