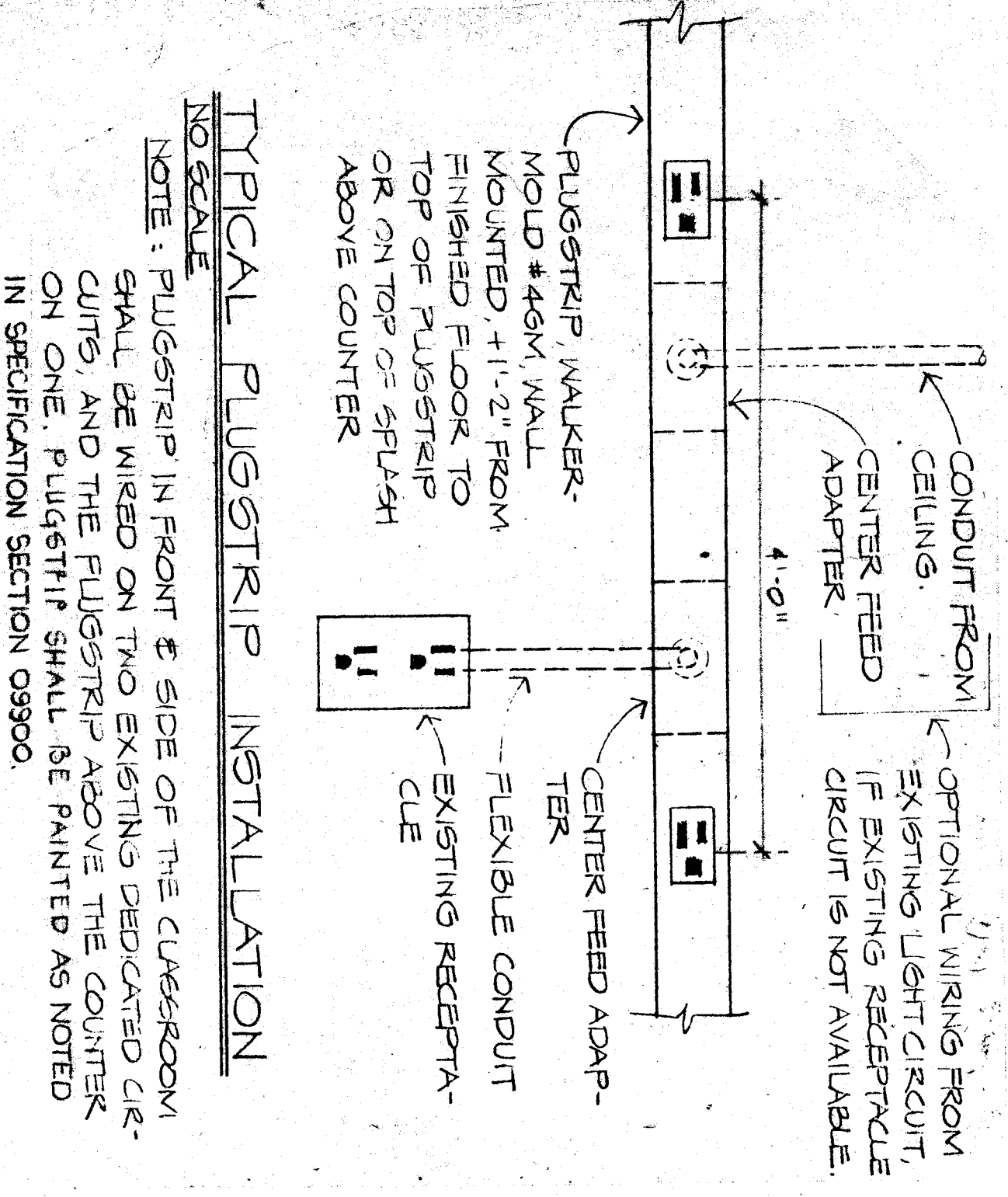
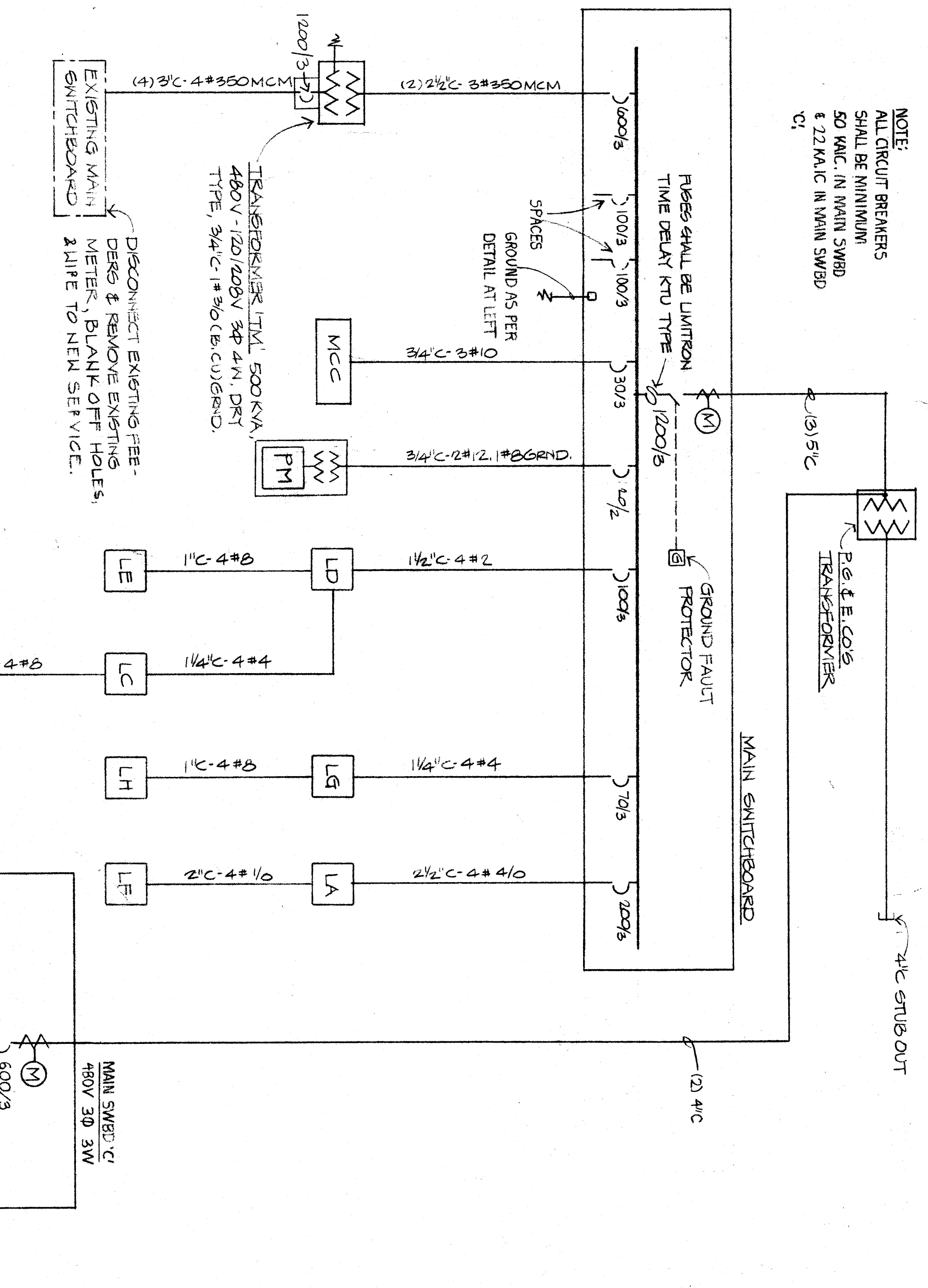
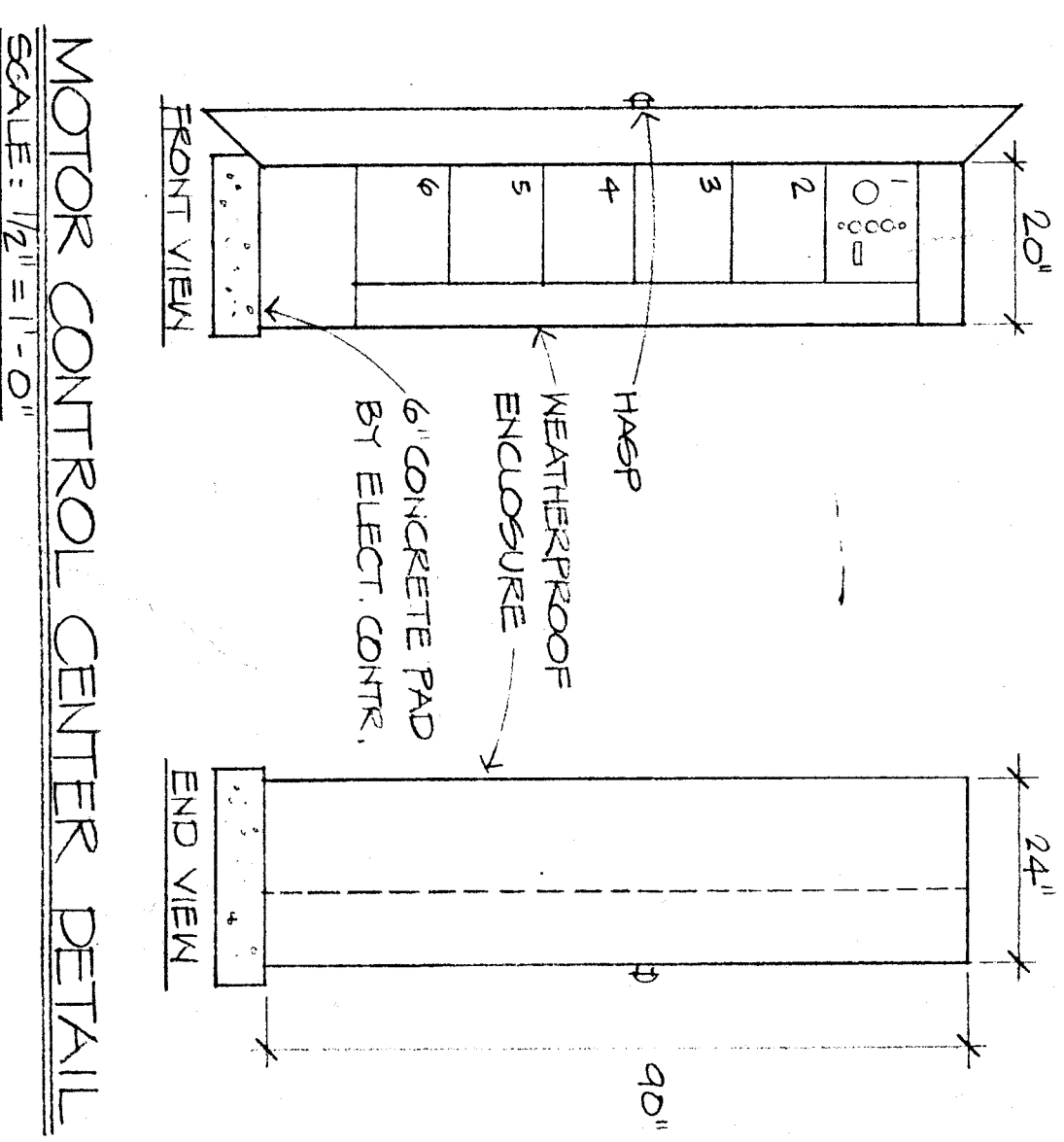


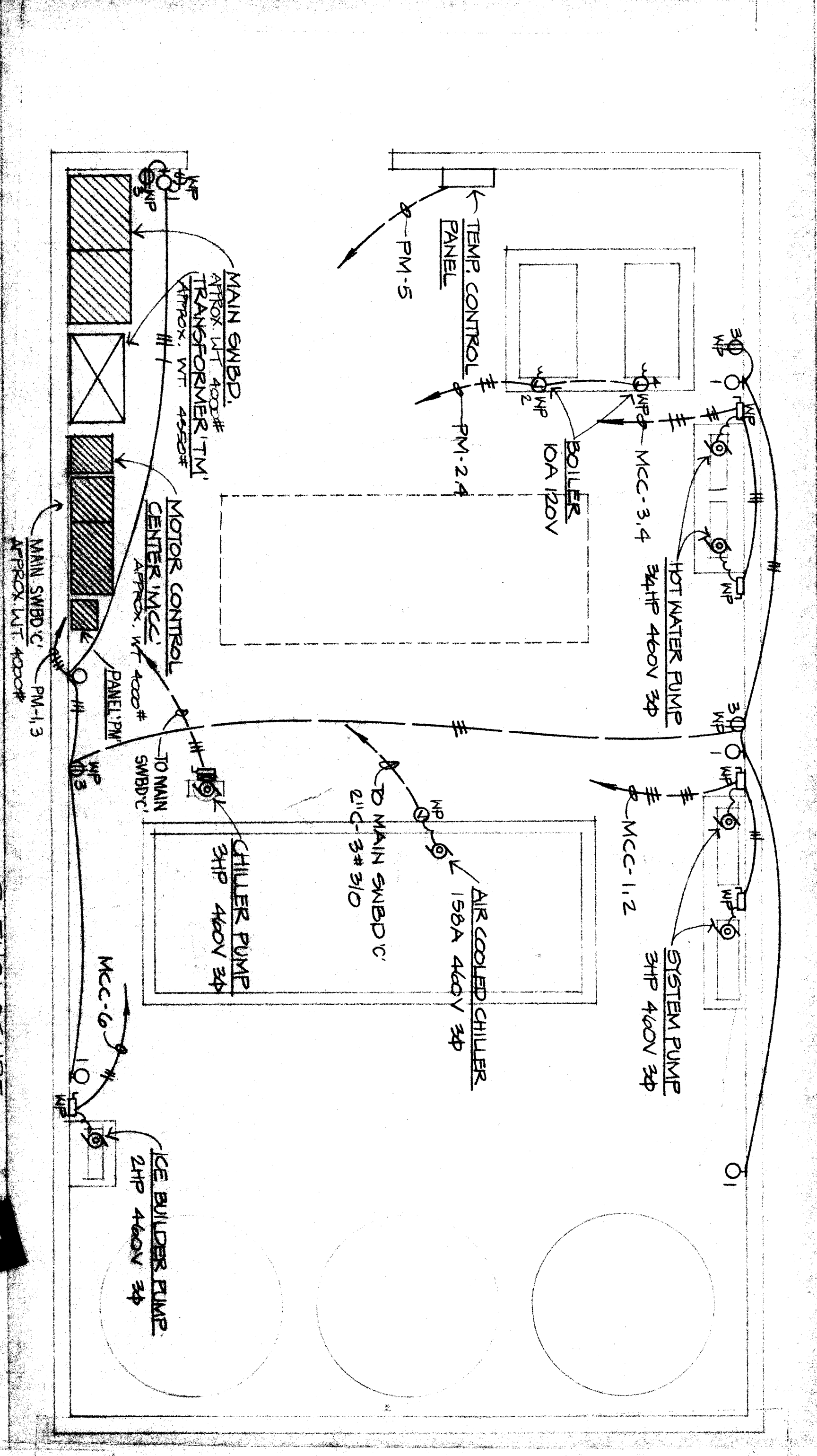
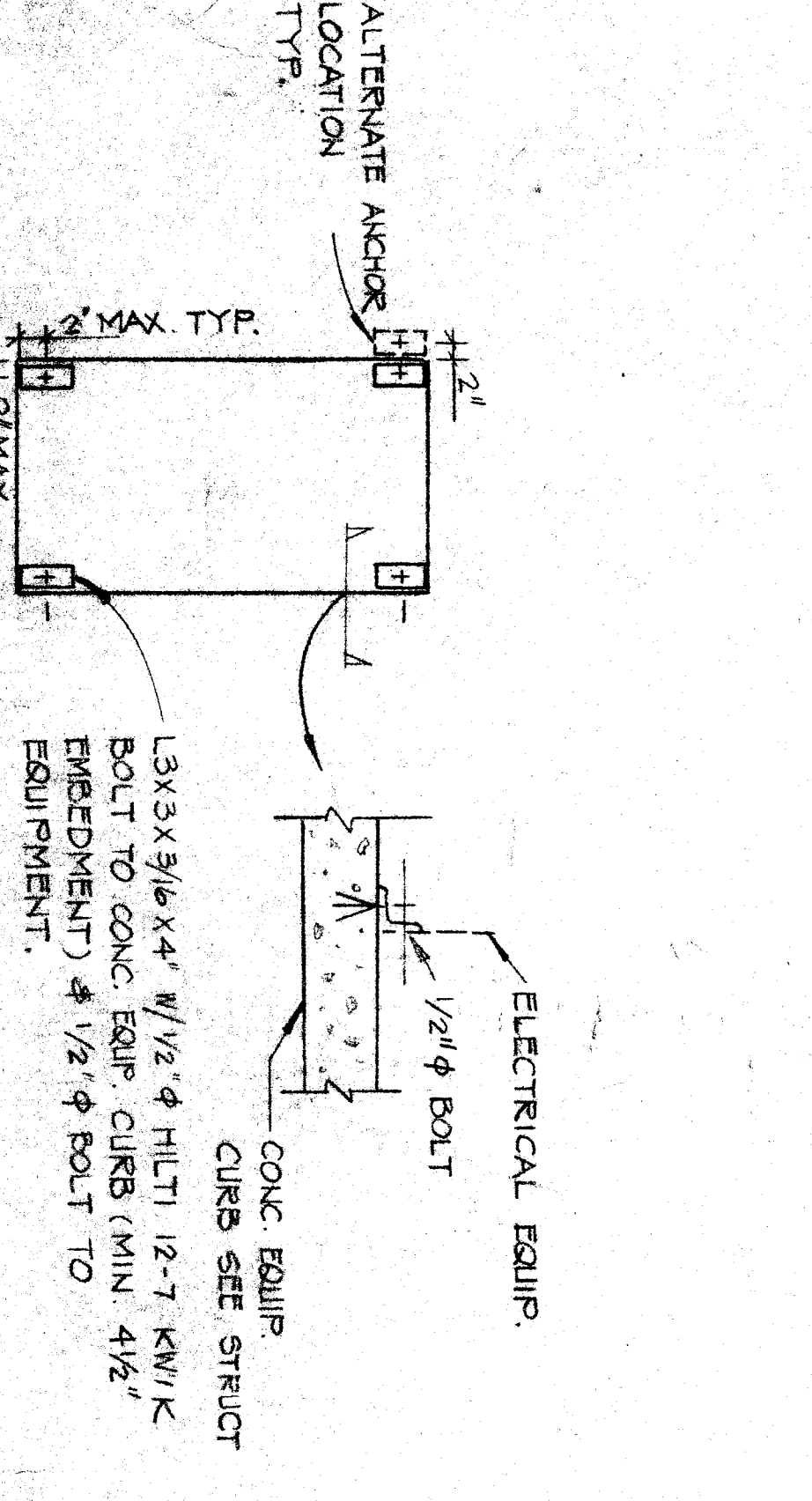
MOTOR CONTROL CENTER (MCC) SCHED.

CIR. NO.	LOAD	HP	SIZE	MCCS	SIZE	TYPE	FLA
1	SYSTEM PUMP	3	30	8	0	FVNR	4.8
2		3	30	8	0	FVNR	4.8
3	HOT WATER	3/4	30	2 1/2			1.4
4		3/4	30	2 1/2			1.4
5	BLINDER PUMP	1 1/2	30	4			2.6
6	SPACE						



ELECT. PANEL - PM

CIR. NO.	BRKR.	REMARKS	WATT
1	20	LIGHTS	1200
2	20	BOILER	1200
3	20	DUPLER RECEPTACLES	200
4	20	BOILER	1200
5	20	TEMP. CONTROL PNL.	200
6	20	SPACE	
7	20		
8	20		
9	20		
10	20		
TOTAL WATT:			2000
TOTAL COSM LOAD:			4 KW
MANS. 1/2 CIRC. BRKR.			MAX. AMP. 100
PANEL PM SHALL BE A PACKAGED POWER SUPPLY, 480V-120/240V 1Ø 3W, 5 KVA, SQ. D. #M25640F.			



RENPRO RUSSELL & ASSOCIATES
 ARCHITECTURE • ENGINEERING • INTERIOR DESIGN/SPACE PLANNING
 Donald W. Renfro, AIA
 Mark E. Russell, AIA
 4800 Boulder Highway, Suite 204, Reno, Nevada 89509 (775) 783-7179

CONSULTANTS
 EUGENE WU
 CONSULTING ELECTRICAL ENGINEER
 327 N. BLACKSTONE AVE., RENO, NEV. 89501
 TELEPHONE (775) 341-4441

PROJECT
BAKERSFIELD CITY SCHOOL DISTRICT
WASHINGTON JUNIOR HIGH SCHOOL MODERNIZATION

MECHANICAL EQUIPMENT ENCLOSURE, ELECT. FLOOR PLAN

DATE APPROVED _____
DATE ISSUED FOR _____
DATE 7-3-91 **BY** BLDGNS

KEY PLAN
 Bakersfield City School District Board of Education
 MECH. EQUIP. ENCLOSURE

REVISIONS

APPROVED/DESIGNED _____
CHECKED BY _____
DRAWN BY _____
PROJECT NO. 86-260W
SHEET NUMBER E-5
DATE 6/26/91

OF 8 SHEETS