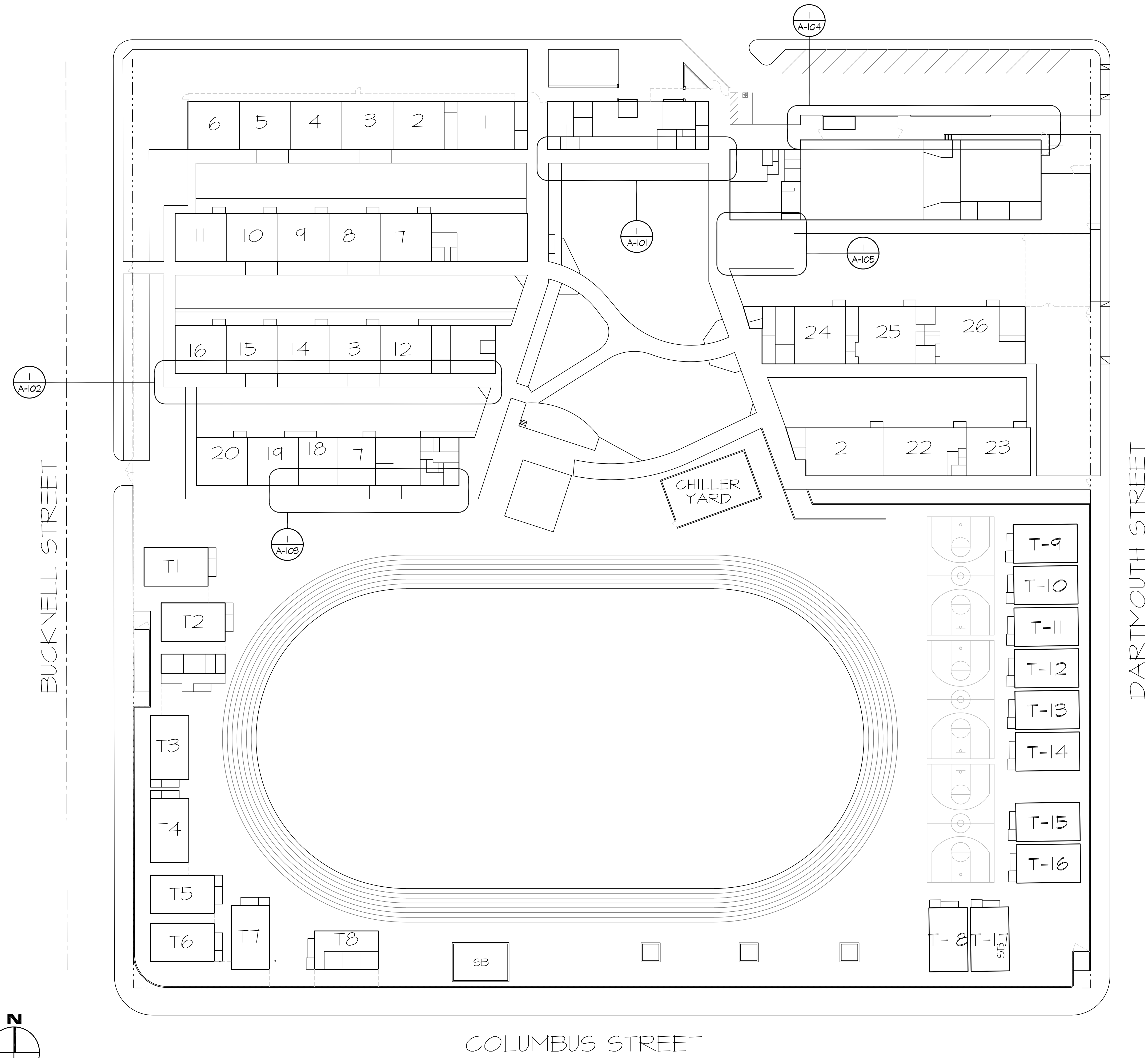
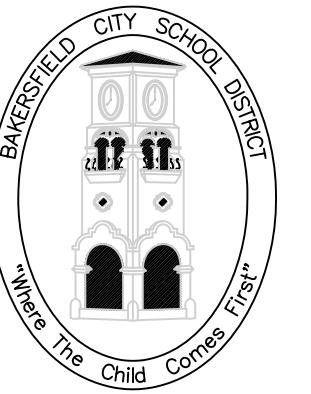


NOBLE AVENUE



Attachment "A"

APPROVAL STAMP



BAKERSFIELD CITY SCHOOL DISTRICT

EDUCATION CENTER  
1300 BAKER STREET  
BAKERSFIELD, CA 93305  
Ph: 661.831.4600  
Fax: 661.326.1485

DEPARTMENT:

MAINTENANCE,  
OPERATIONS &  
FACILITIES

1801 PELLIZ DRIVE  
BAKERSFIELD, CA 93307  
PHONE: (661) 681-8888  
FAX: (661) 684-4926

PROJECT:

CONCRETE &  
HANDRAIL  
REPLACEMENT

DRAWINGS FOR:

WASHINGTON MS  
1101 NOBLE AVENUE  
BAKERSFIELD, CA

REV. NO.:

1

TITLE:

SHEET TITLE:

VICINITY  
PLAN

PROJECT NO.:

00000.00-41-DM

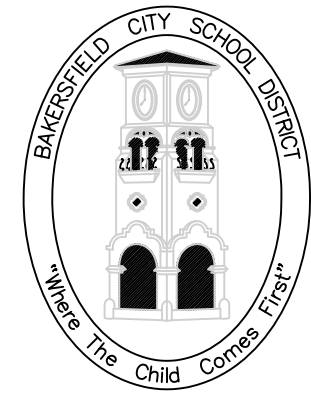
SHEET NO.:

A-100

RELEASE:

DATE: 3/19/24

APPROVAL STAMP



BAKERSFIELD CITY SCHOOL DISTRICT

EDUCATION CENTER  
1300 BAKER STREET  
BAKERSFIELD, CA 93305  
Ph: 661.831.4600  
Fax: 661.326.1485

DEPARTMENT:  
MAINTENANCE,  
OPERATIONS &  
FACILITIES  
1801 PELIZ DRIVE  
BAKERSFIELD, CA 93307  
PHONE: (661) 861-8888  
FAX: (661) 864-4926

PROJECT:  
CONCRETE &  
HANDRAIL  
REPLACEMENT

DRAWINGS FOR:  
WASHINGTON MS  
1101 NOBLE AVENUE  
BAKERSFIELD, CA

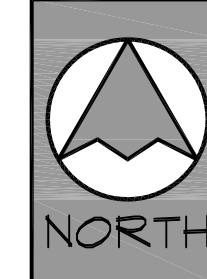
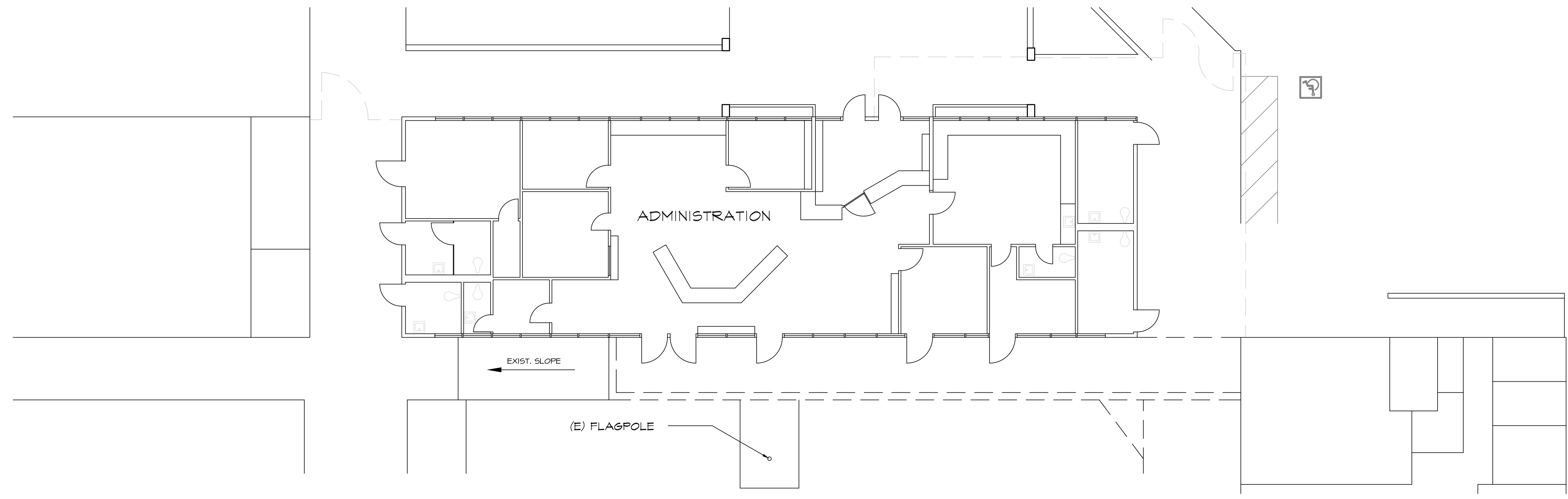
REV. NO.:	TITLE:
1	

SHEET TITLE:  
BLDG. A

PROJECT NO.:  
00000.00-41-DM

SHEET NO.:  
A-101

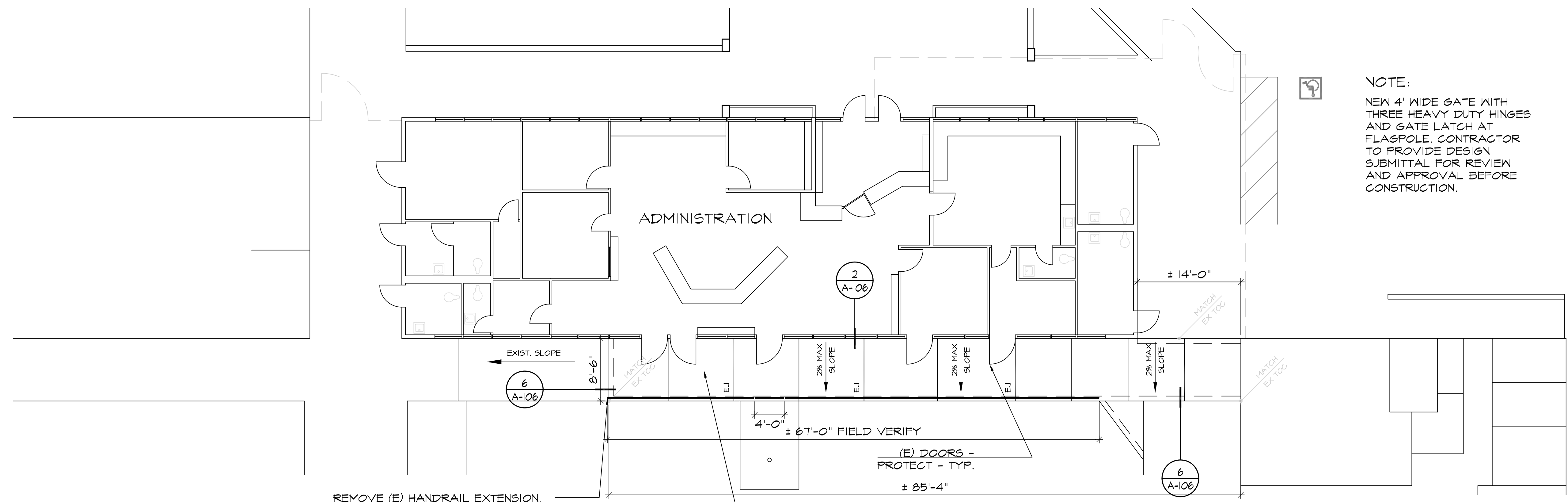
RELEASE:  
DATE: 3/19/24



PARTIAL WALKWAYS/RAMPS/RAILING DEMO SITE PLAN - WING A

SCALE: 1/8" = 1'-0"

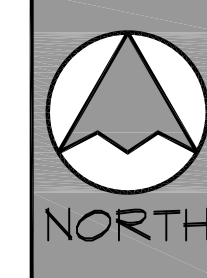
SCALE: 1/8"=1'-0" (IN FEET)  
0 4 8 16



NOTE:  
NEW 4' WIDE GATE WITH  
THREE HEAVY DUTY HINGES  
AND GATE LATCH AT  
FLAGPOLE. CONTRACTOR  
TO PROVIDE DESIGN  
SUBMITTAL FOR REVIEW  
AND APPROVAL BEFORE  
CONSTRUCTION.

REMOVE (E) HANDRAIL EXTENSION,  
ALIGN AND TIE NEW HANDRAIL INTO  
(E) VERTICAL POST

NEW 5-1/2" THICK CONCRETE RAMPS/FLATWORK - MIN  
3000 PSI 6 SACK MIX WITH FIBERMESH 0/ 2" SAND OR  
DECOMPOSED GRANITE 0/ 6 MIL POLY BARRIER -  
COMPACT ENTIRE AREA TO A MIN OF 90%

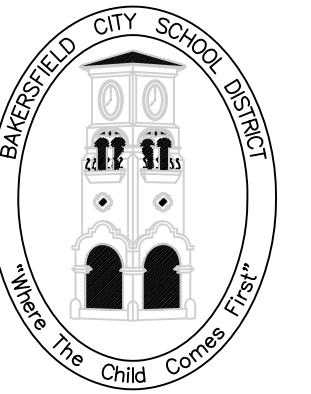


PARTIAL NEW WALKWAYS/RAMPS/RAILING SITE PLAN - WING A

SCALE: 1/8" = 1'-0"

SCALE: 1/8"=1'-0" (IN FEET)  
0 4 8 16

APPROVAL STAMP



BAKERSFIELD CITY SCHOOL DISTRICT

EDUCATION CENTER  
1300 BAKER STREET  
BAKERSFIELD, CA 93305  
Ph: 661.631.4600  
Fax: 661.326.1485

DEPARTMENT:  
MAINTENANCE,  
OPERATIONS &  
FACILITIES  
1801 PELIZ DRIVE  
BAKERSFIELD, CA 93307  
PHONE: (661) 681-8885  
FAX: (661) 684-9826

PROJECT:  
CONCRETE &  
HANDRAIL  
REPLACEMENT

DRAWINGS FOR:  
WASHINGTON MS  
1101 NOBLE AVENUE  
BAKERSFIELD, CA

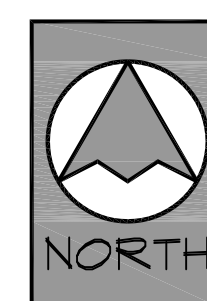
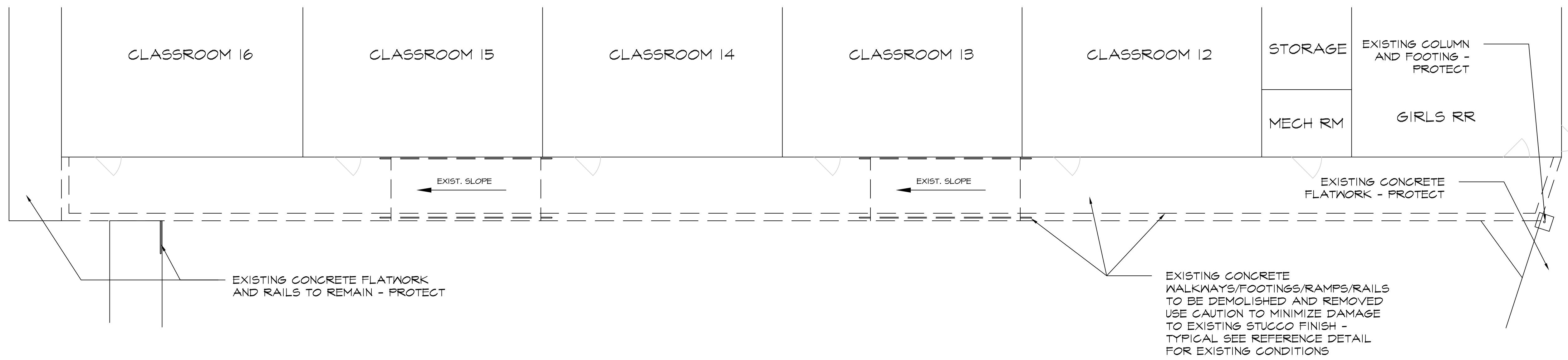
REV. NO.:	TITLE:
1	

SHEET TITLE:  
BLDG. D

PROJECT NO.:  
00000.00-41-DM

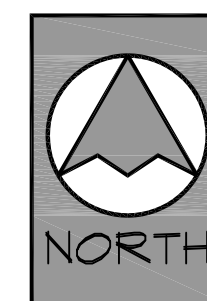
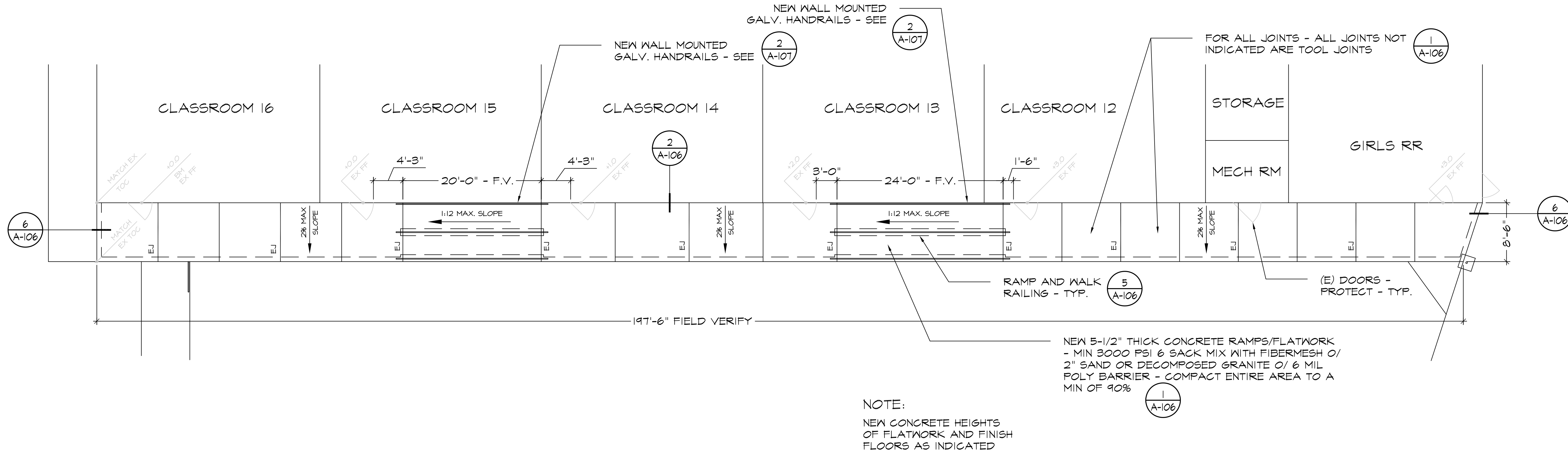
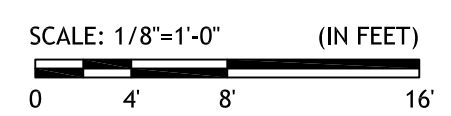
SHEET NO.:  
A-102

RELEASE:  
DATE: 3/19/24



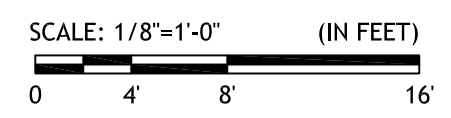
PARTIAL WALKWAYS/RAMPS/RAILING DEMO SITE PLAN - WING D

SCALE: 1/8" = 1'-0"

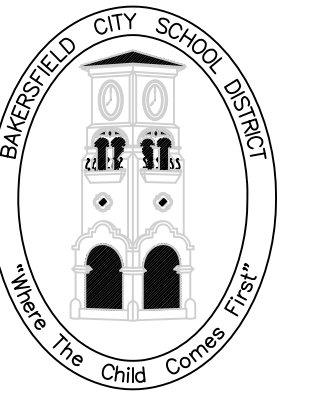


PARTIAL NEW WALKWAYS/RAMPS/RAILING SITE PLAN - WING D

SCALE: 1/8" = 1'-0"



APPROVAL STAMP



BAKERSFIELD CITY SCHOOL DISTRICT

EDUCATION CENTER  
1300 BAKER STREET  
BAKERSFIELD, CA 93305  
Ph: 661.831.4600  
Fax: 661.326.1485

DEPARTMENT:  
MAINTENANCE,  
OPERATIONS &  
FACILITIES  
1801 PELIZ DRIVE  
BAKERSFIELD, CA 93307  
PHONE: (661) 861-8888  
FAX: (661) 864-4926

PROJECT:  
CONCRETE &  
HANDRAIL  
REPLACEMENT

DRAWINGS FOR:  
WASHINGTON MS  
1101 NOBLE AVENUE  
BAKERSFIELD, CA

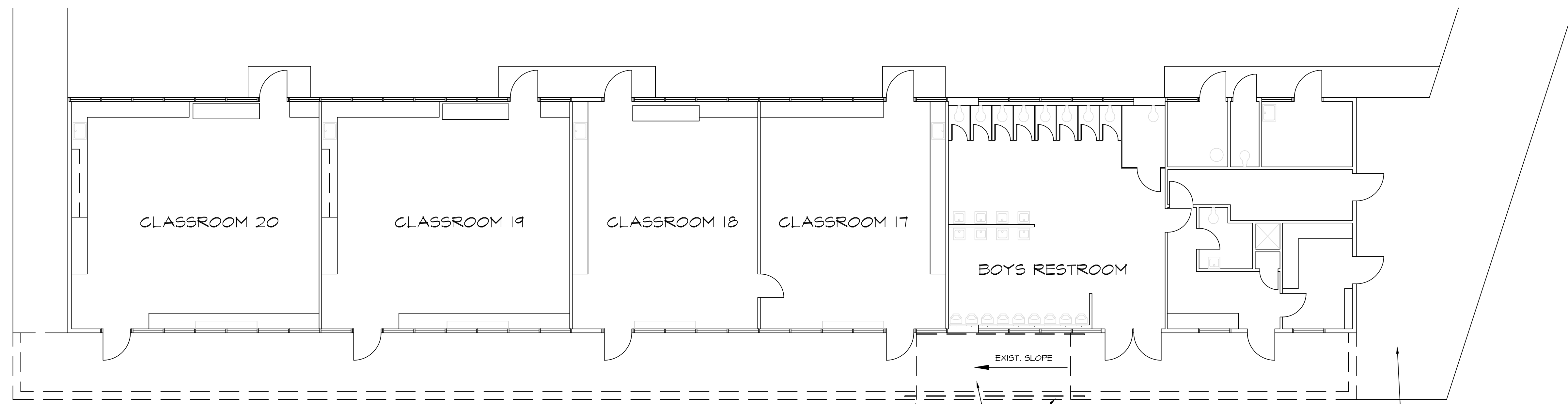
REV. NO.:	TITLE:
1	

SHEET TITLE:  
BLDG. E

PROJECT NO.:  
00000.00-41-DM

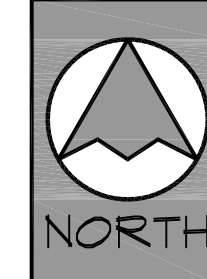
SHEET NO.:  
A-103

RELEASE:  
DATE: 3/19/24



EXISTING CONCRETE WALKWAYS/FOOTINGS/RAMPS/RAILS TO BE DEMOLISHED AND REMOVED USE CAUTION TO MINIMIZE DAMAGE TO EXISTING STUCCO FINISH - TYPICAL SEE REFERENCE DETAIL FOR EXISTING CONDITIONS

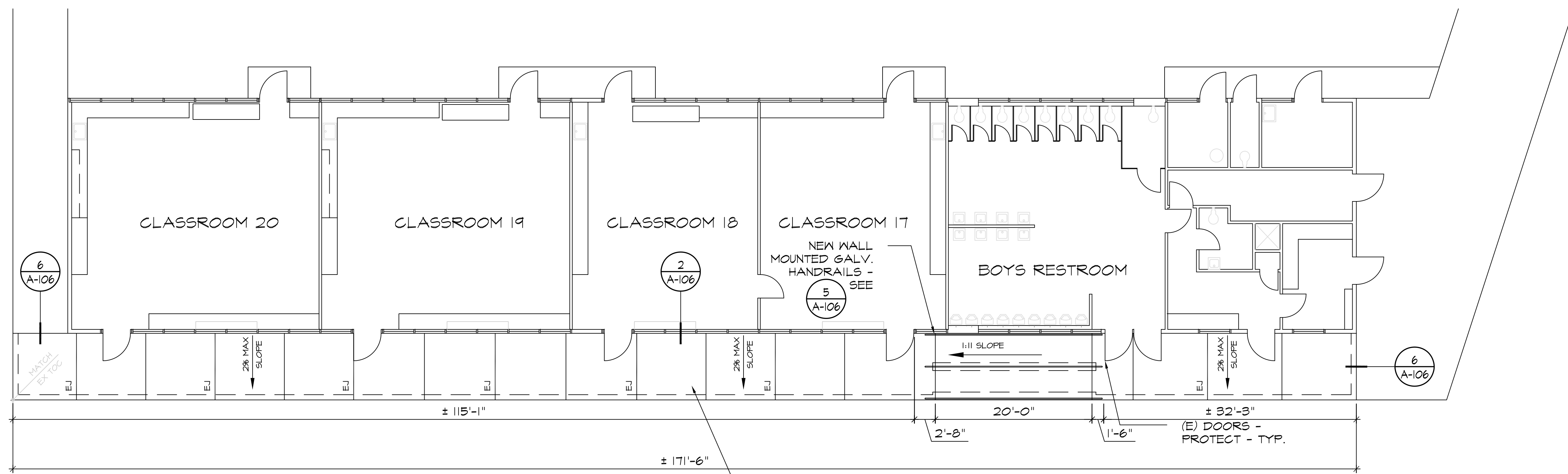
EXISTING CONCRETE FLATWORK - PROTECT



PARTIAL WALKWAYS/RAMPS/RAILING DEMO SITE PLAN - WING E

SCALE: 1/8" = 1'-0"

SCALE: 1/8"=1'-0" (IN FEET)  
0 4 8 16



NEW 5-1/2" THICK CONCRETE RAMPS/FLATWORK - MIN 3000 PSI 6 SACK MIX WITH FIBERMESH 0/ 2" SAND OR DECOMPOSED GRANITE 0/ 6 MIL POLY BARRIER - COMPACT ENTIRE AREA TO A MIN OF 90%

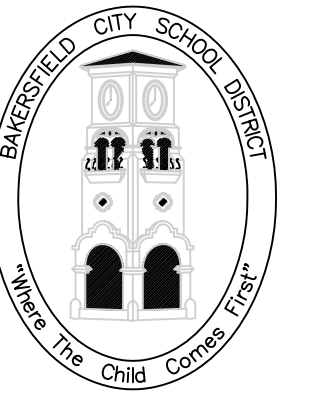


PARTIAL NEW WALKWAYS/RAMPS/RAILING SITE PLAN - WING E

SCALE: 1/8" = 1'-0"

SCALE: 1/8"=1'-0" (IN FEET)  
0 4 8 16

APPROVAL STAMP



BAKERSFIELD CITY SCHOOL DISTRICT

EDUCATION CENTER  
1300 BAKER STREET  
BAKERSFIELD, CA 93305  
PH: 661.831.4600  
FAX: 661.326.1485

DEPARTMENT:  
MAINTENANCE,  
OPERATIONS &  
FACILITIES  
1801 PELIZ DRIVE  
BAKERSFIELD, CA 93307  
PHONE: (661) 681-8888  
FAX: (661) 684-4926

PROJECT:  
CONCRETE &  
HANDRAIL  
REPLACEMENT

DRAWINGS FOR:  
WASHINGTON MS  
1101 NOBLE AVENUE  
BAKERSFIELD, CA

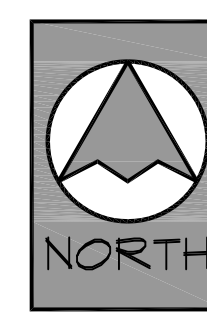
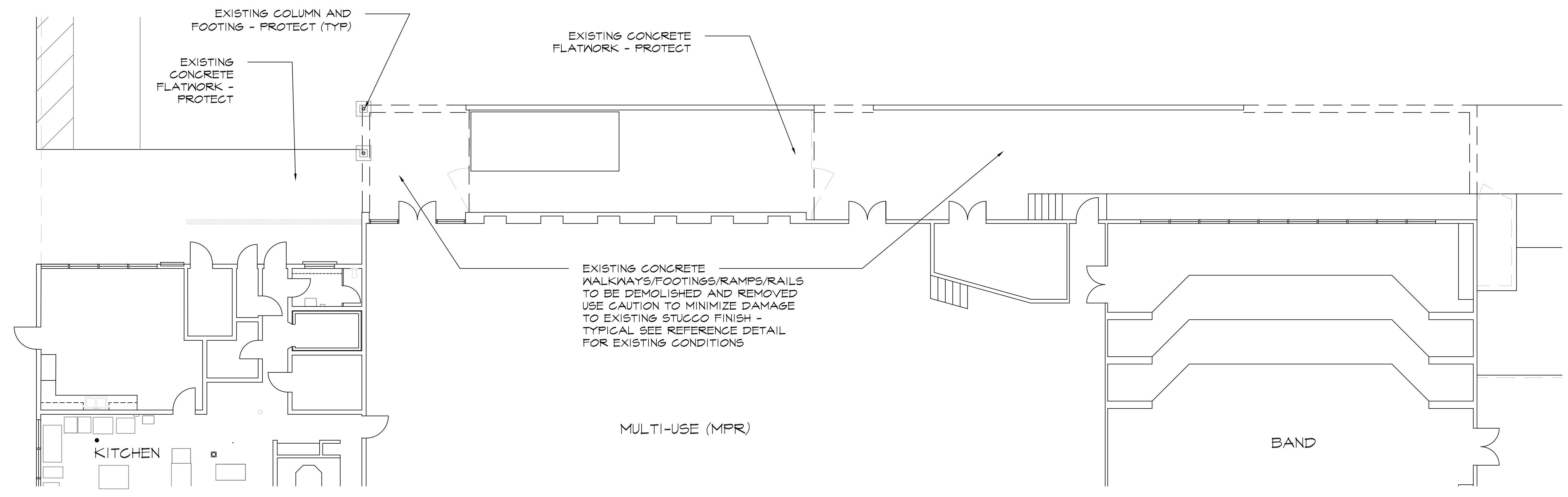
REV. NO.:	TITLE:
1	

SHEET TITLE:  
BLDG. F

PROJECT NO.:  
00000.00-41-DM

SHEET NO.:  
A-104

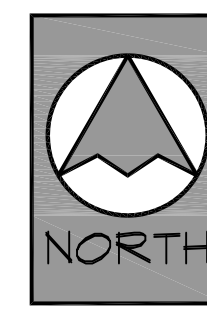
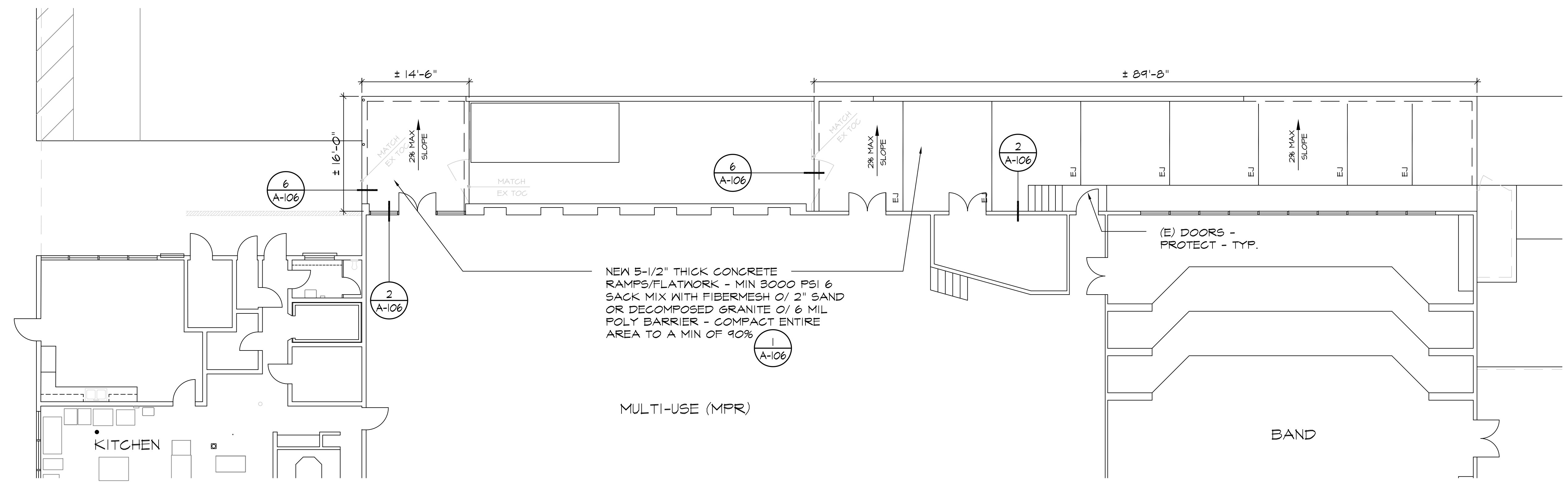
RELEASE:  
DATE: 3/19/24



PARTIAL WALKWAYS/RAMPS/RAILING DEMO SITE PLAN - WING D

SCALE: 1/8" = 1'-0"

SCALE: 1/8"=1'-0" (IN FEET)  
0 4 8 16

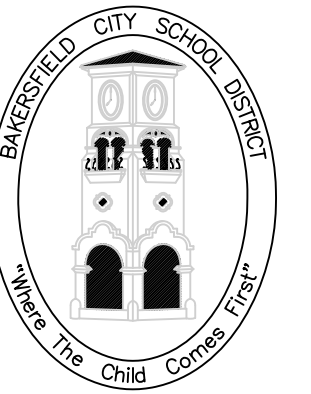


PARTIAL NEW WALKWAYS/RAMPS/RAILING SITE PLAN - WING D

SCALE: 1/8" = 1'-0"

SCALE: 1/8"=1'-0" (IN FEET)  
0 4 8 16

APPROVAL STAMP



BAKERSFIELD CITY SCHOOL DISTRICT

EDUCATION CENTER  
1300 BAKER STREET  
BAKERSFIELD, CA 93305  
Ph: 661.831.4600  
Fax: 661.326.1485

DEPARTMENT:  
MAINTENANCE,  
OPERATIONS &  
FACILITIES  
1801 PELIZ DRIVE  
BAKERSFIELD, CA 93307  
PHONE: (661) 681-8888  
FAX: (661) 684-4926

PROJECT:  
CONCRETE &  
HANDRAIL  
REPLACEMENT

DRAWINGS FOR:  
WASHINGTON MS  
1101 NOBLE AVENUE  
BAKERSFIELD, CA

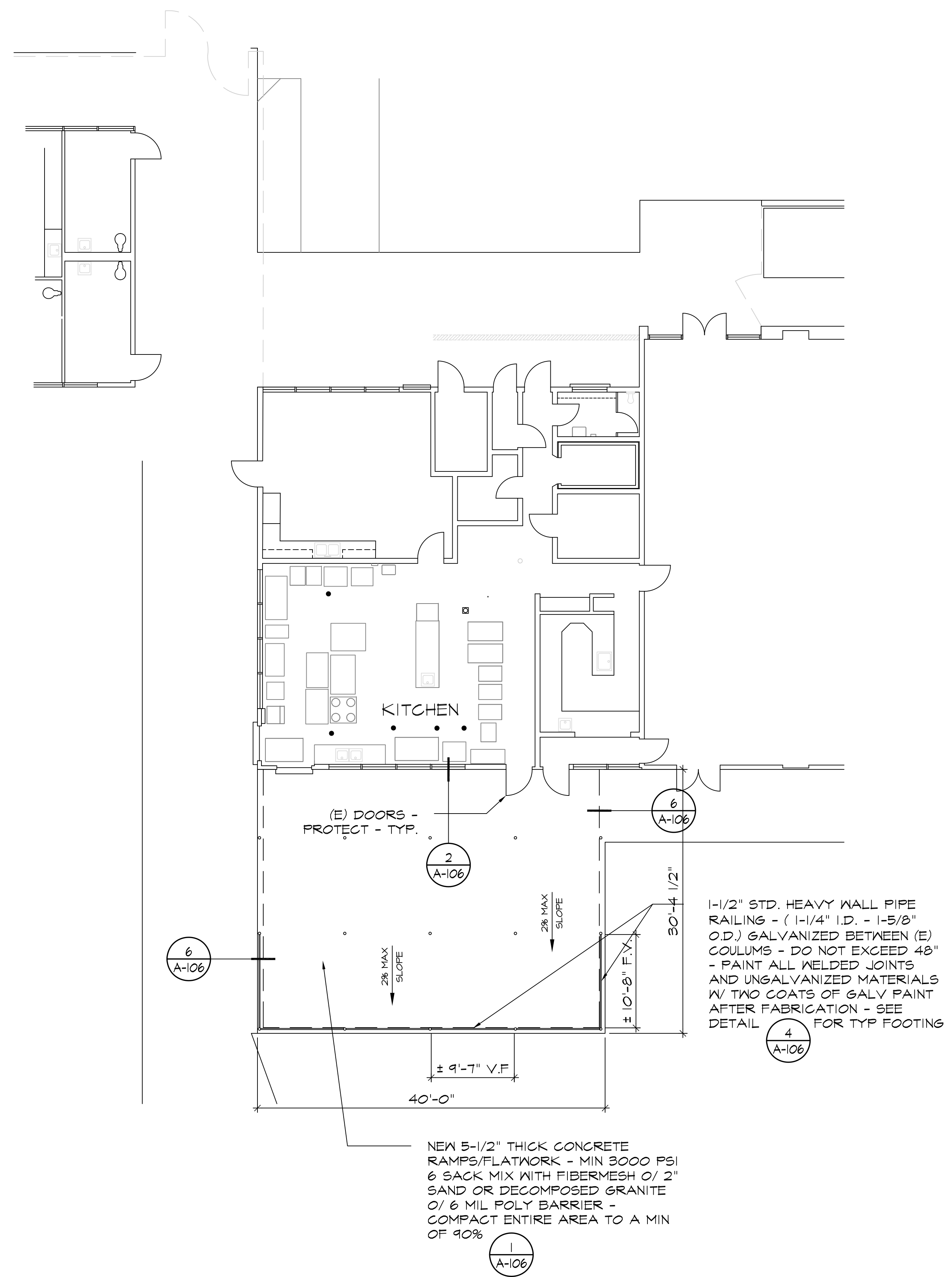
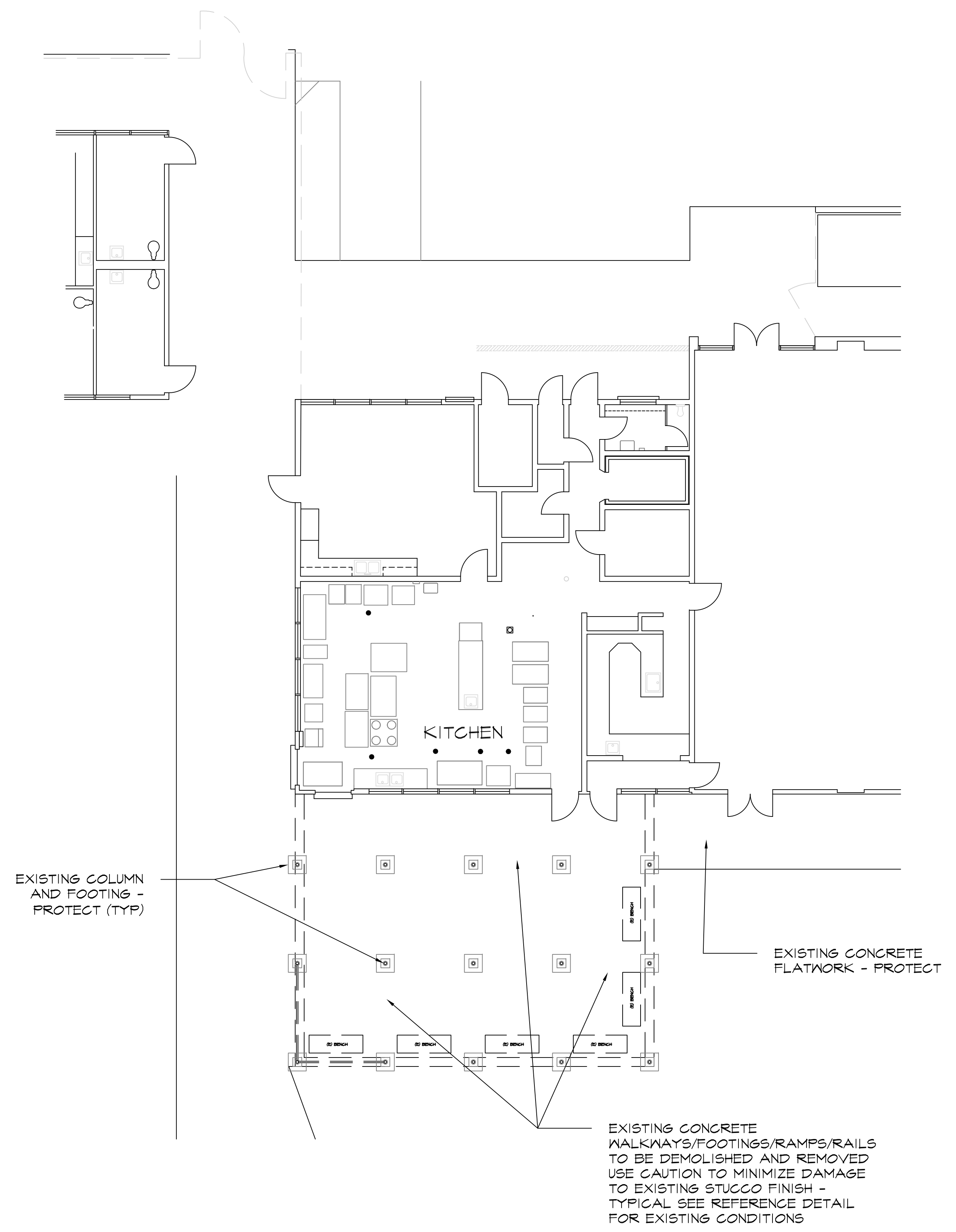
REV. NO.:	TITLE:
1	

SHEET TITLE:  
**BLDG. F**

PROJECT NO.:  
00000.00-41-DM

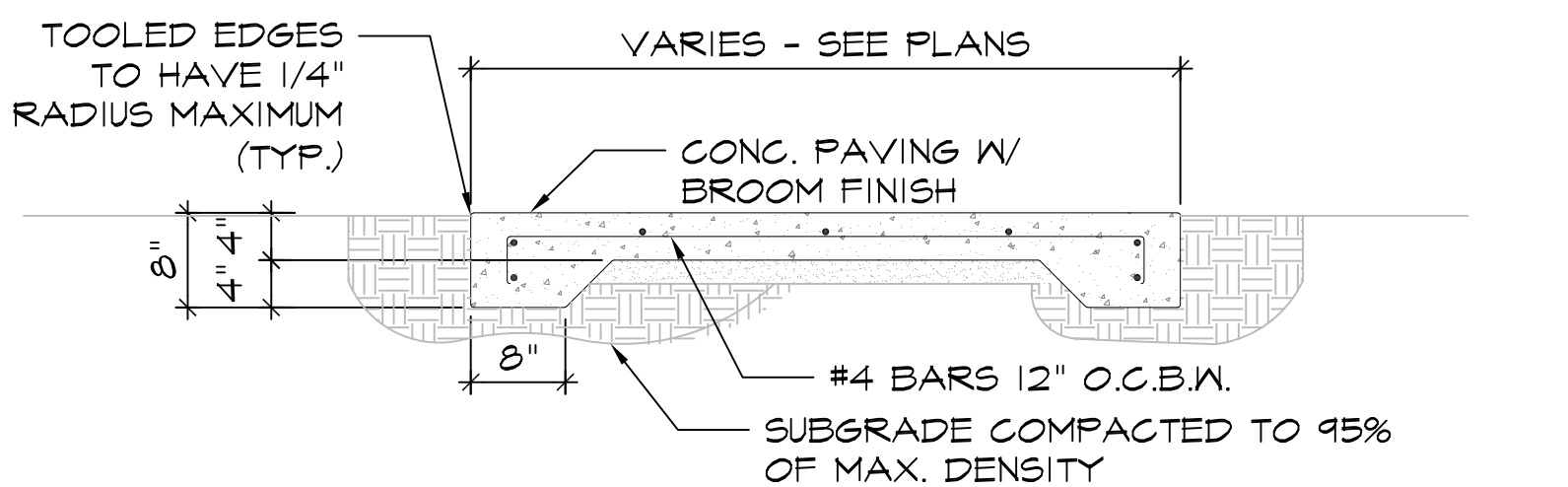
SHEET NO.:  
**A-105**

RELEASE:  
DATE: 3/19/24

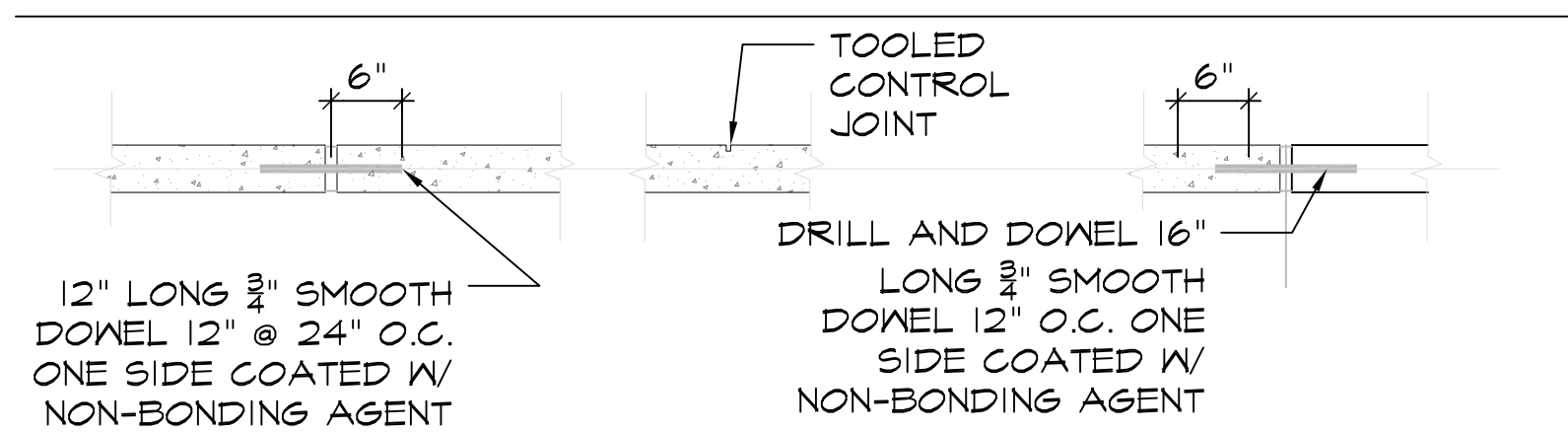


PARTIAL NEW WALKWAYS/RAMPS SITE PLAN - WING F  
SCALE: 1/8" = 1'-0"  
SCALE: 1/8" = 1'-0" (IN FEET)  
0 4 8 16

PARTIAL NEW WALKWAYS/RAMPS SITE PLAN - WING D  
SCALE: 1/8" = 1'-0"  
SCALE: 1/8" = 1'-0" (IN FEET)  
0 4 8 16

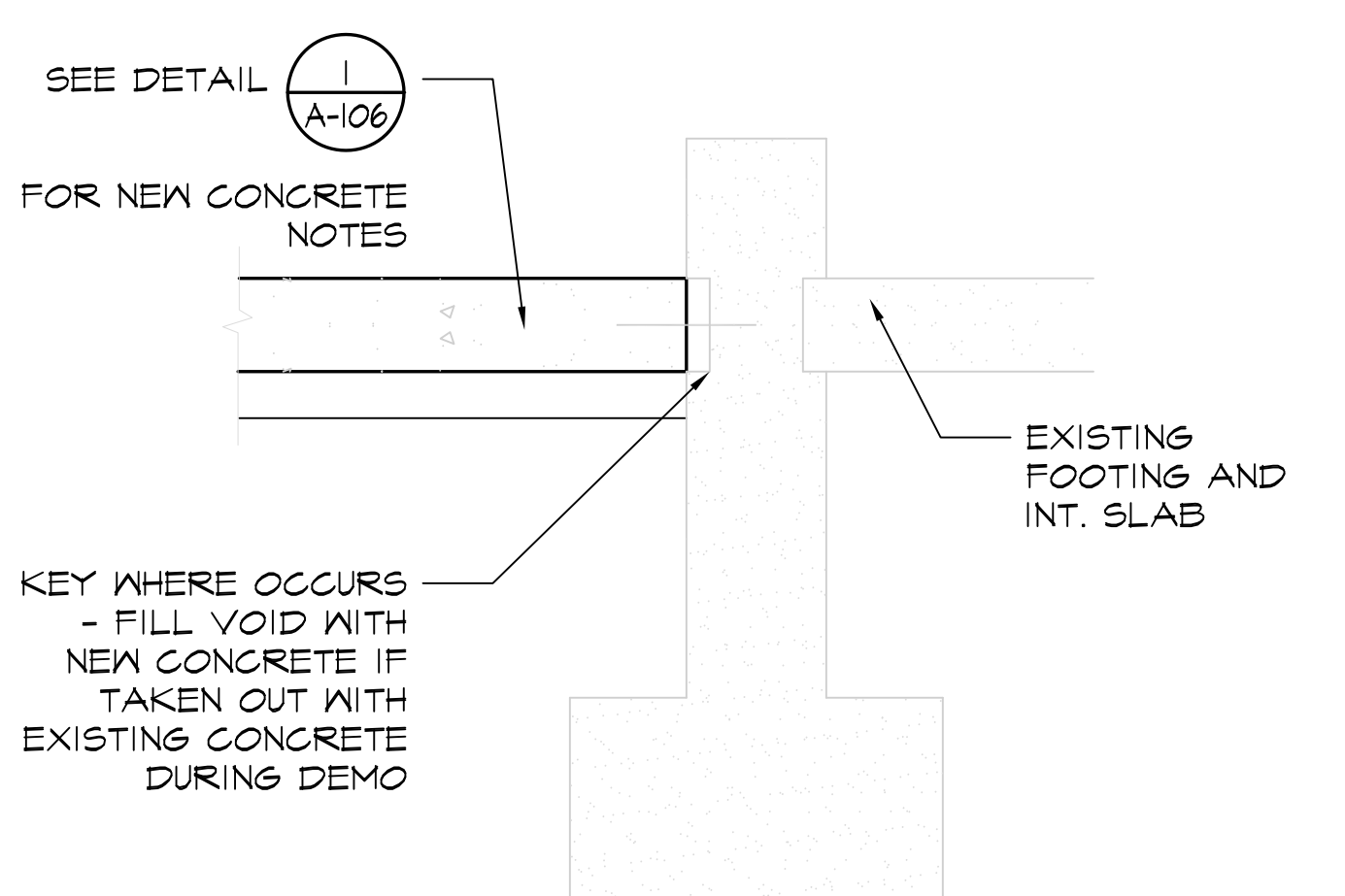


**CONCRETE WALK**

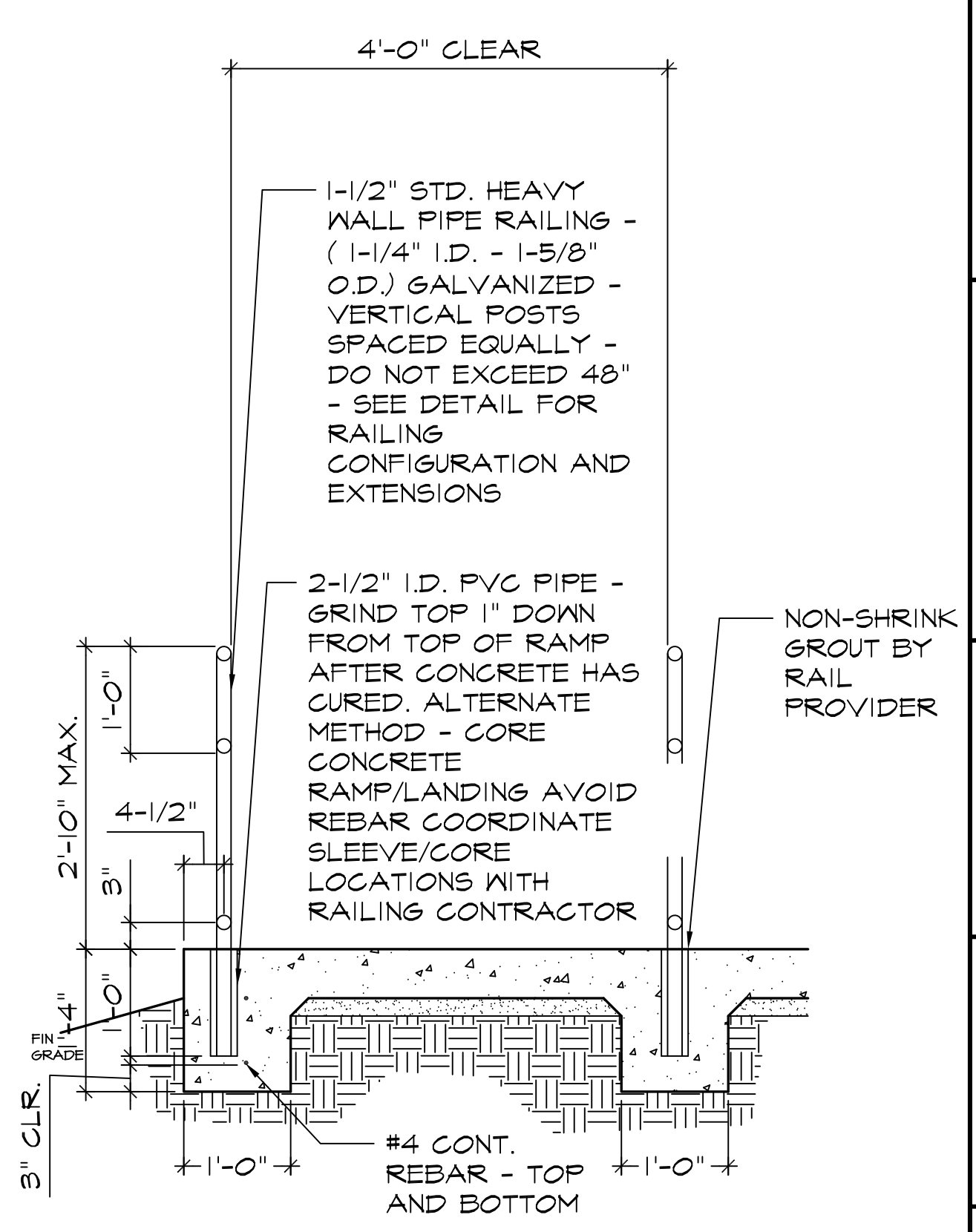


**TYP. EXPANSION AND CONTROL JOINTS**

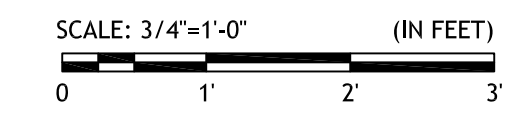
- NOTES:**
- REFER TO SITE PLAN FOR FINISH GRADE OD CONC. WALKS.
  - AFTER FORM REMOVAL, BACKFILL TOPSOIL AGAINST WALK TO WALK TOP.
  - LOCATE EXPANSION JOINTS AT 12' O/C MAX. OR INTERVALS OR AS INDICATED BY SITE PLAN.
  - PROVIDE TOOLED JOINTS AS SHOWN ON DRAWINGS OR 5' O/C MAX. JOINTS TO BE 1/2" DEEP X 3/8" WIDE W/ 3/16" RADIUS - TOOL W/ 1/8" WIDE BLADE. SPACE JOINS AS SHOWN ON SITE PLAN.
  - PROVIDE CHAIRS TO HOLD REINFORCING IN POSITION DURING CONCRETE POUR.
  - CONCRETE WALKWAY TO BE 3000 PSI MIX W/ FIBERMESH OVER 2" SAND OVER 6 MIL POLY.
  - EXPANSION JOINT - 3/8" VOID END CAP WITH REMOVABLE TOP. POLYURETHANE BASED SEALANT (SIKAFLEX-2c NS TS) PRIME EDGES WITH SIKAFLEX SEALANT / ADHESIVE PRIMER 260 / 205 - USE BOND BREAKER TAPE AT VOID CAP SURFACE W/ 3/8" x 5 1/2" FELT



- NOTES:**
- PAINT ALL WELDED JOINTS AND UNGALVANIZED MATERIALS W/ TWO COATS OF GALV PAINT AFTER FABRICATION

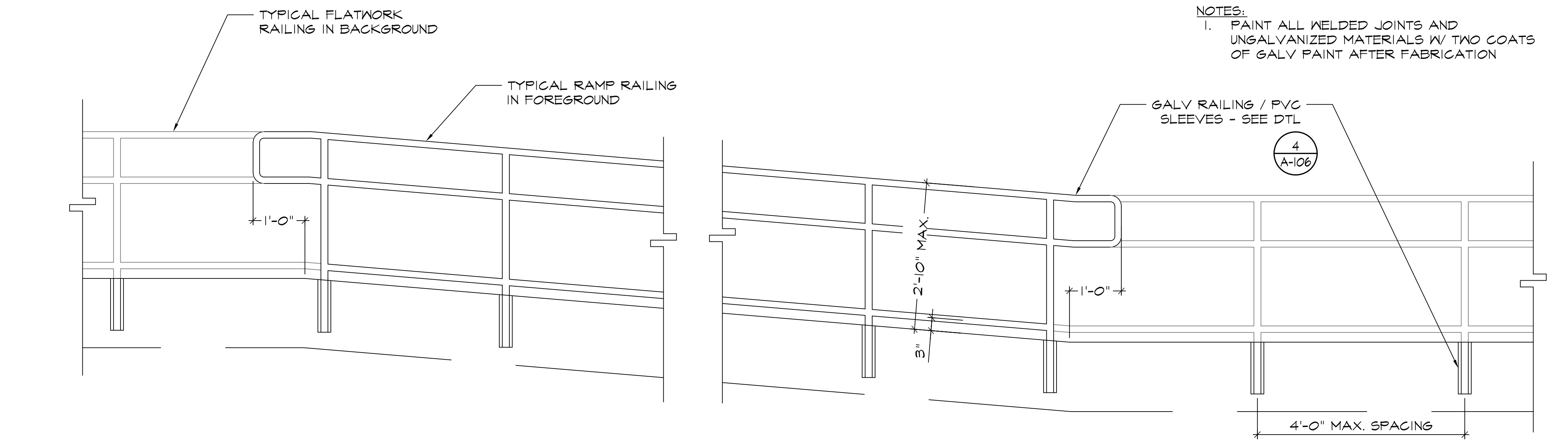


**1 CONCRETE WALK DETAILS**



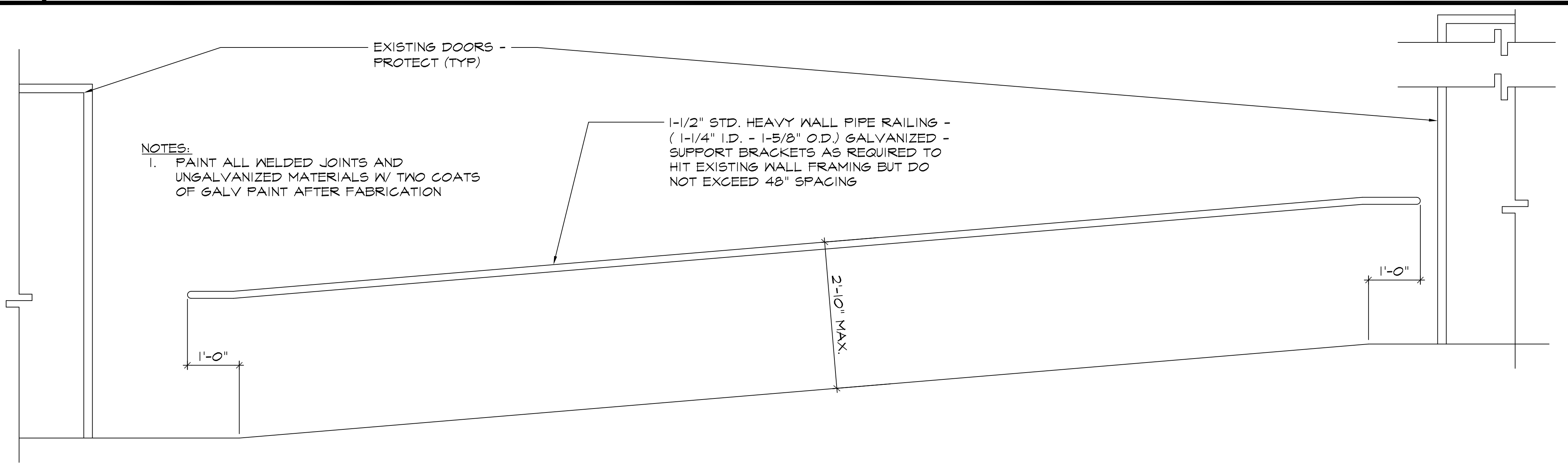
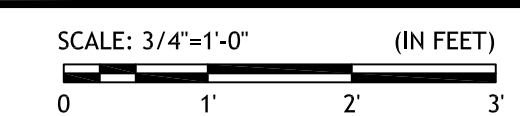
**2 CONC. @ BLDG**

NTS



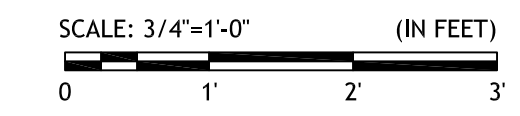
- NOTES:**
- PAINT ALL WELDED JOINTS AND UNGALVANIZED MATERIALS W/ TWO COATS OF GALV PAINT AFTER FABRICATION

**3 TYPICAL RAILING CONSTRUCTION**

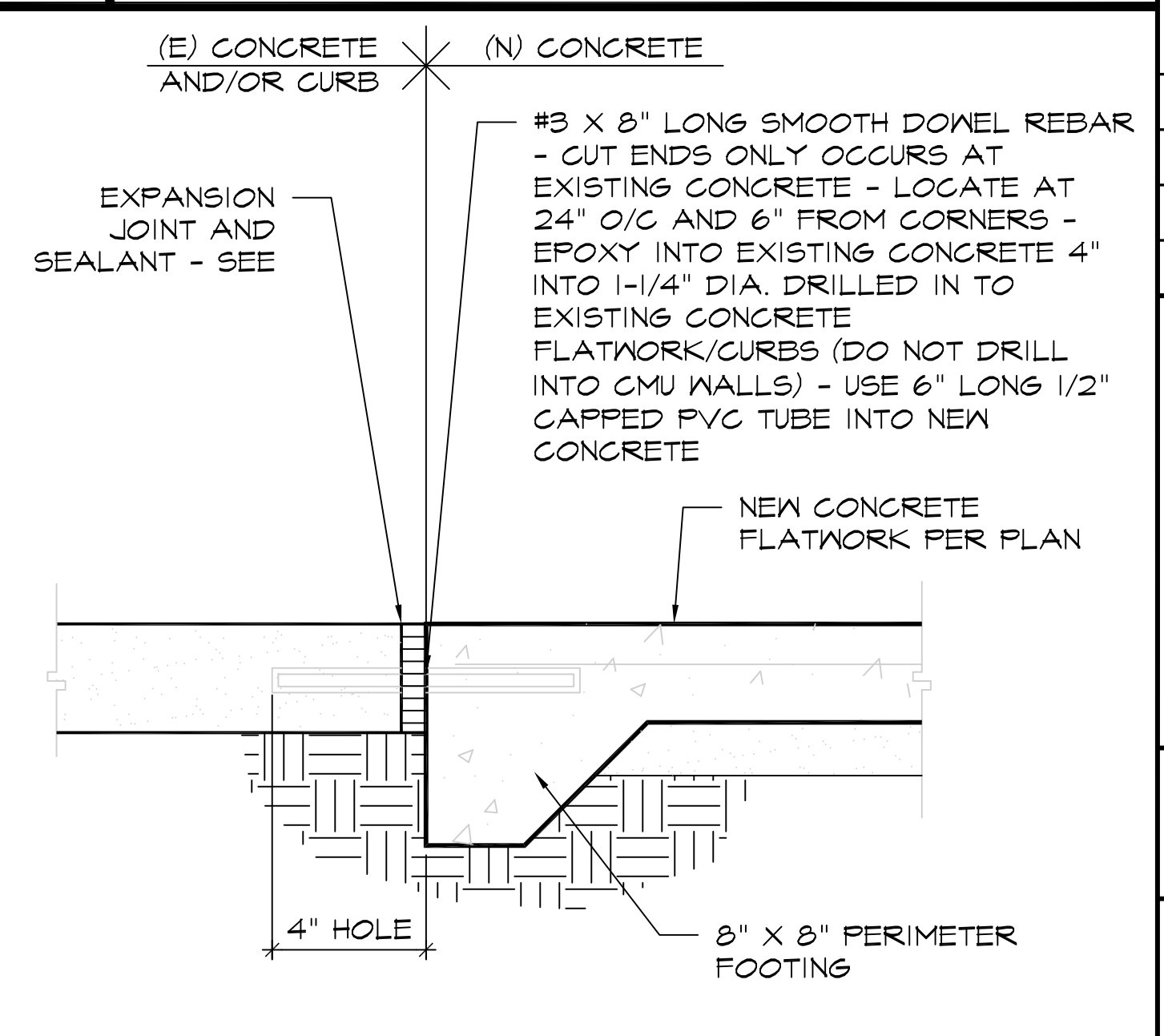
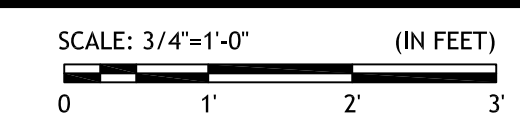


- NOTES:**
- PAINT ALL WELDED JOINTS AND UNGALVANIZED MATERIALS W/ TWO COATS OF GALV PAINT AFTER FABRICATION

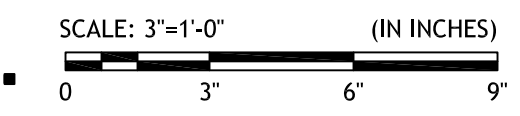
**5 WALL MOUNTED HANDRAIL**



**4 FTG./RAILING**

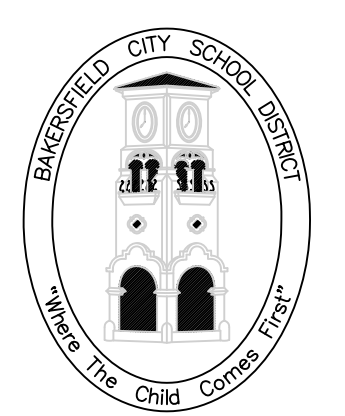


**6 SLAB TO IEI CONC.**



Attachment "A"

APPROVAL STAMP



BAKERSFIELD CITY SCHOOL DISTRICT

EDUCATION CENTER  
1300 BAKER STREET  
BAKERSFIELD, CA 93305  
PHONE: (661) 681-6000  
FAX: (661) 681-4950

DEPARTMENT:  
MAINTENANCE,  
OPERATIONS &  
FACILITIES

1801 PELIZ DRIVE  
BAKERSFIELD, CA 93307  
PHONE: (661) 681-6000  
FAX: (661) 681-4950

PROJECT:  
CONCRETE &  
HANDRAIL  
REPLACEMENT

DRAWINGS FOR:  
WASHINGTON MS  
1101 NOBLE AVENUE  
BAKERSFIELD, CA

REV. NO.:	TITLE:
1	

SHEET TITLE:

DETAILS

PROJECT NO.:

00000.00-41-DM

SHEET NO.:

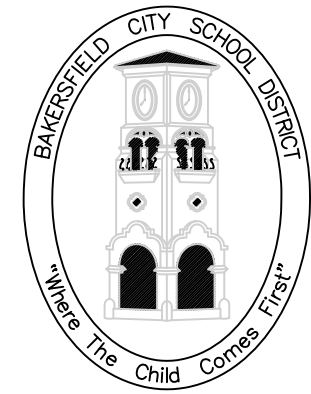
A-106

RELEASE:

DATE: 3/19/24

**Attachment "A"**

APPROVAL STAMP



**BAKERSFIELD CITY SCHOOL DISTRICT**

EDUCATION CENTER  
1300 BAKER STREET  
BAKERSFIELD, CA 93305  
Ph: 661.831.4600  
Fax: 661.326.1485

DEPARTMENT:

**MAINTENANCE,  
OPERATIONS &  
FACILITIES**

1801 PELLISS DRIVE  
BAKERSFIELD, CA 93307  
PHONE: (661) 861-8888  
FAX: (661) 864-9826

PROJECT:

**CONCRETE &  
HANDRAIL  
REPLACEMENT**

DRAWINGS FOR:

**WASHINGTON MS  
1101 NOBLE AVENUE  
BAKERSFIELD, CA**

REV. NO.:

TITLE:

1

SHEET TITLE:

**DETAILS**

PROJECT NO.:

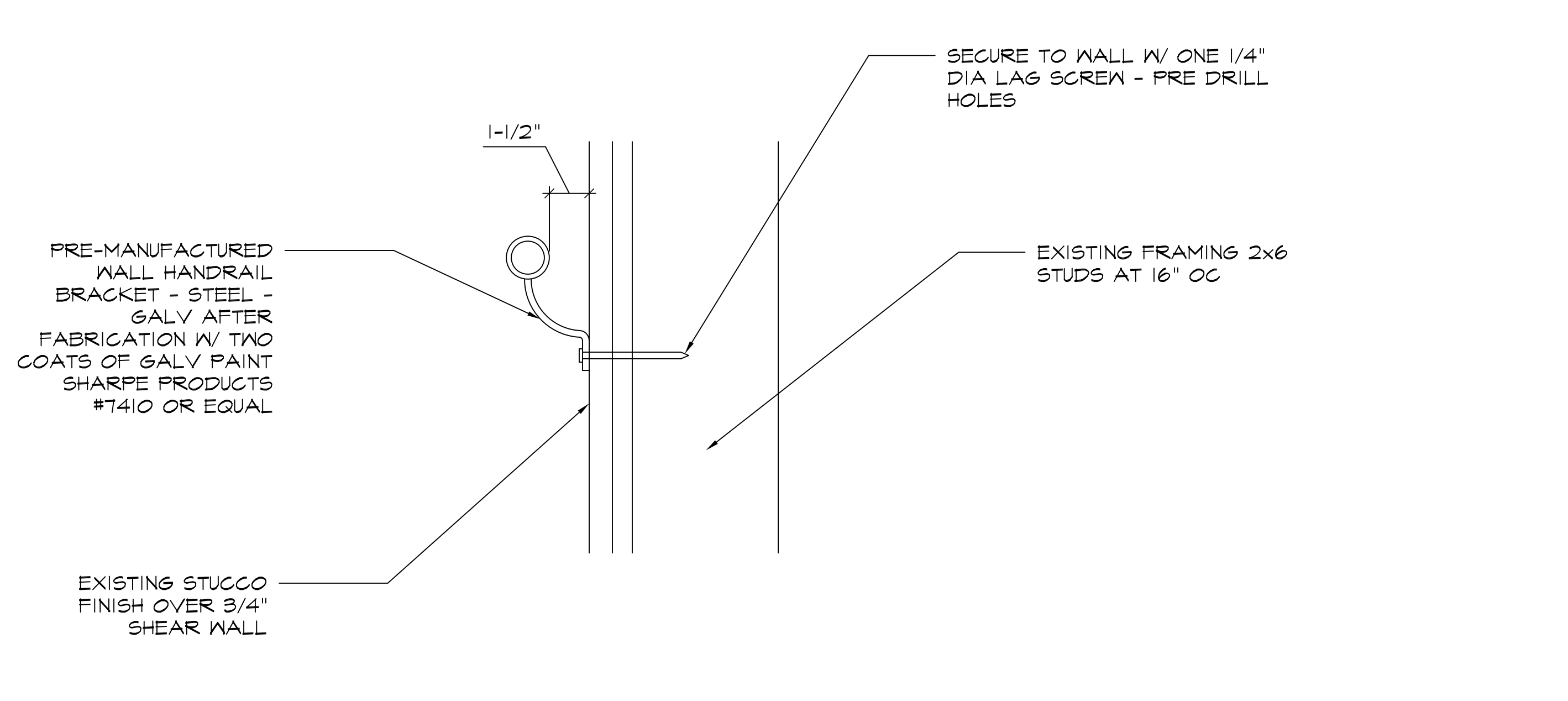
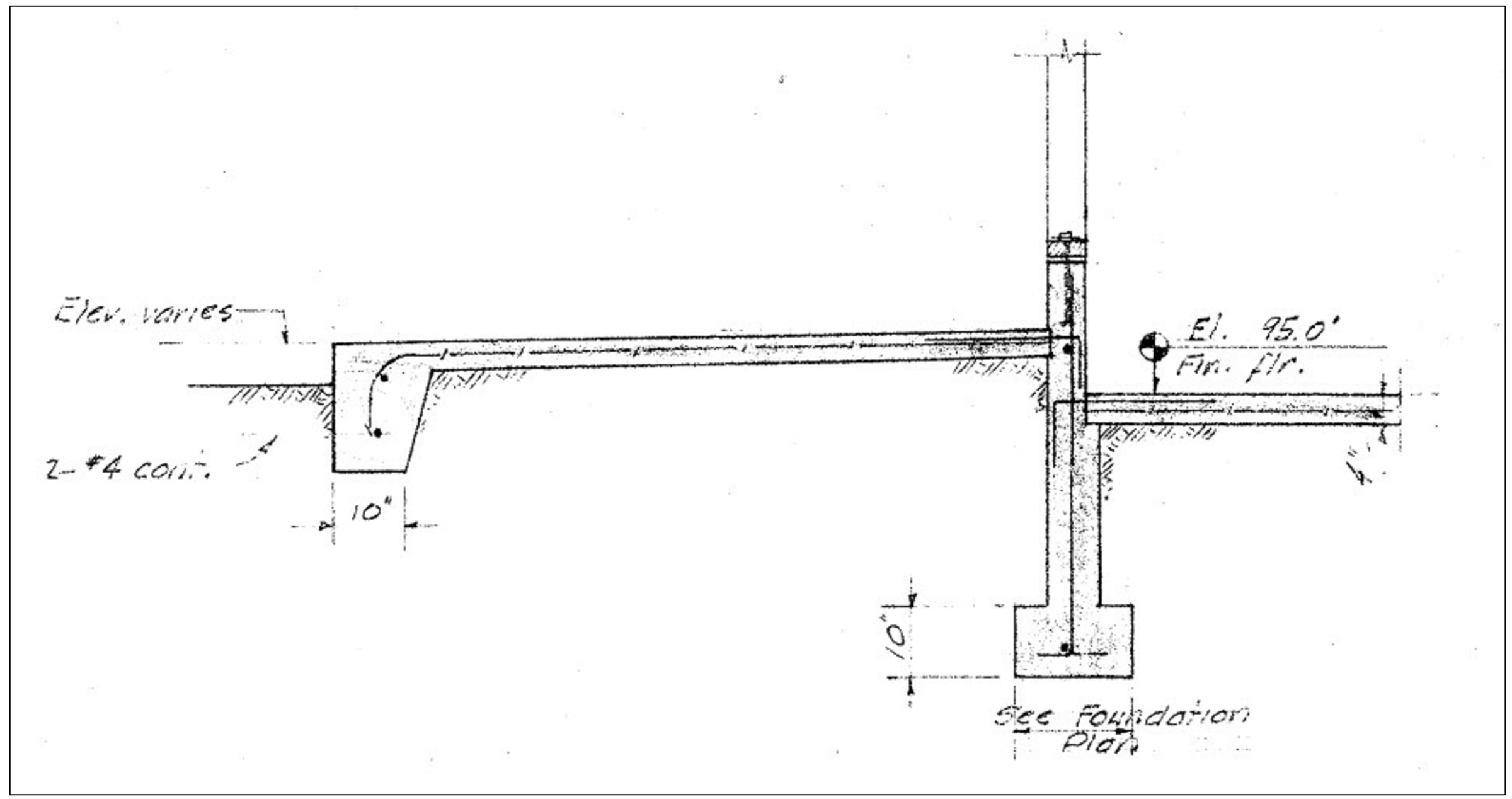
00000.00-41-DM

SHEET NO.:

**A-107**

RELEASE:

DATE: 3/19/24



**1 TYP. EXIST. FLATWORK AND FTG TO BE DEMOLISHED** NTS

**2 HANDRAIL MOUNTING @ BLDG** SCALE: 1"=1'-0" (IN FEET)  
0 1/2 1 2