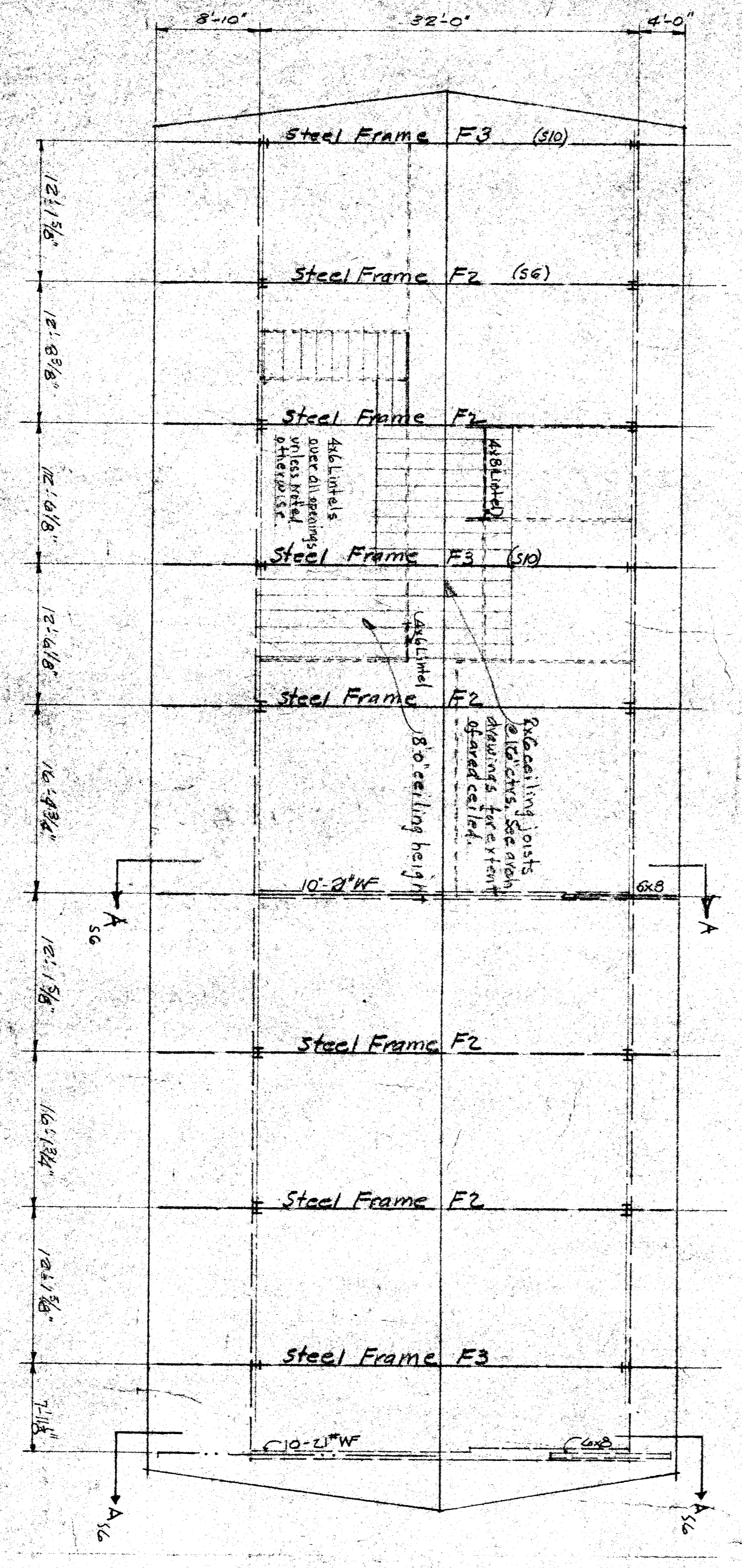
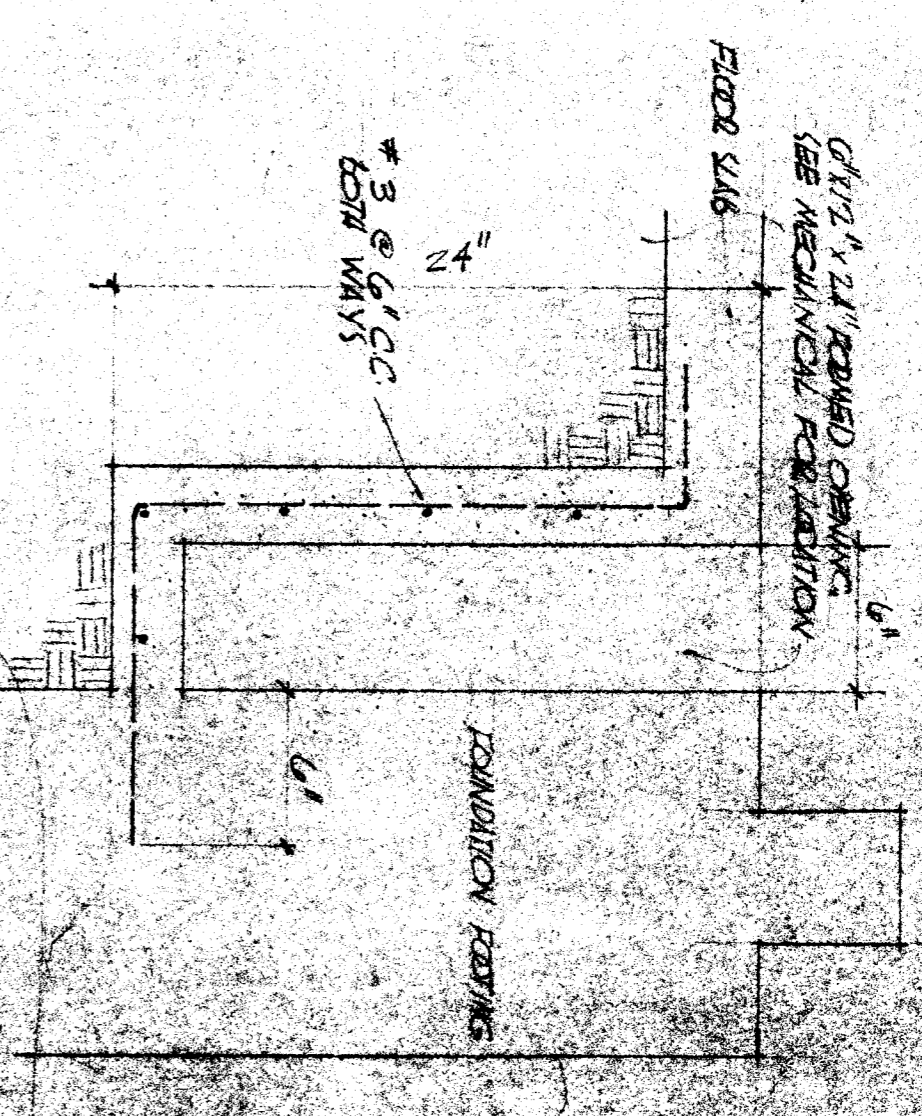


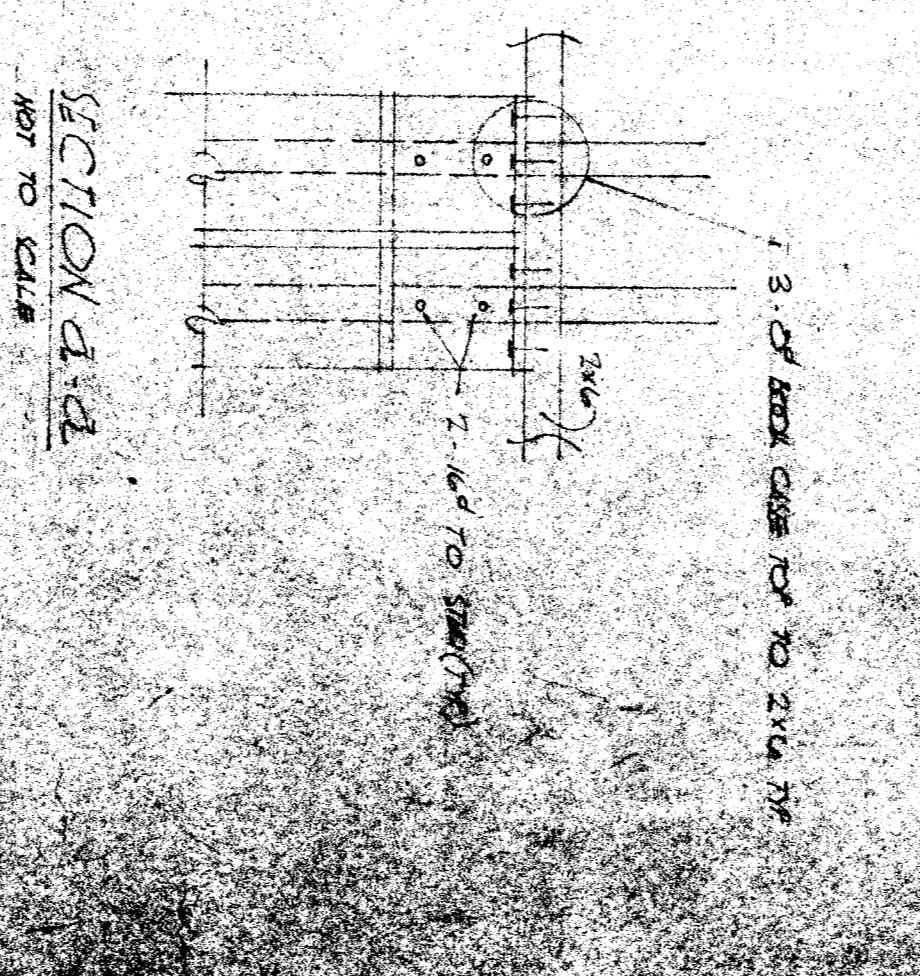
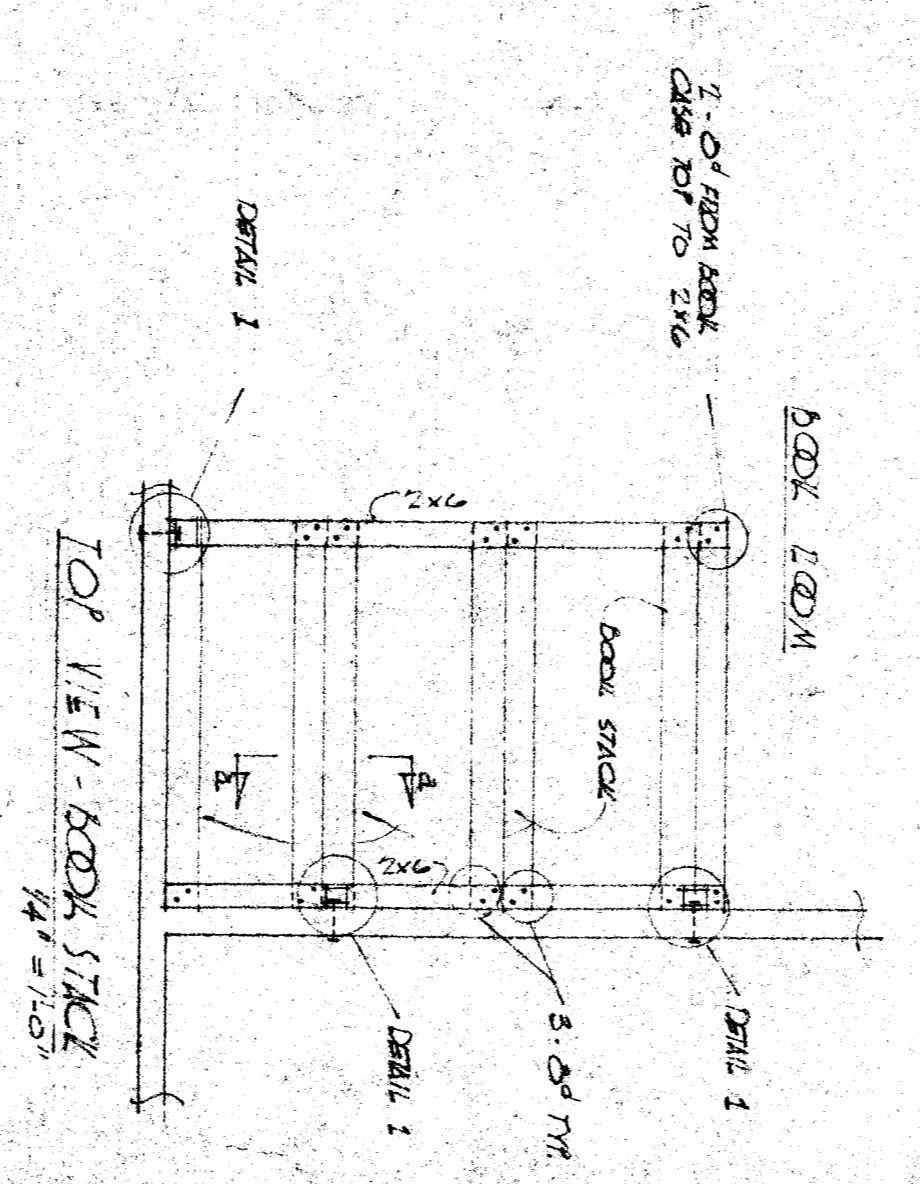
FOUNDATION PLAN
1/8" = 1'-0"



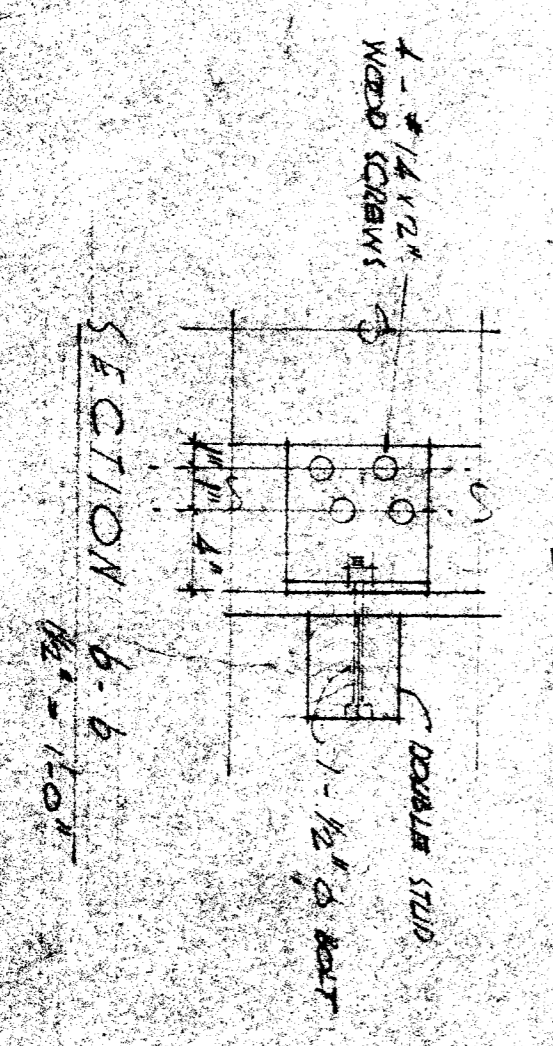
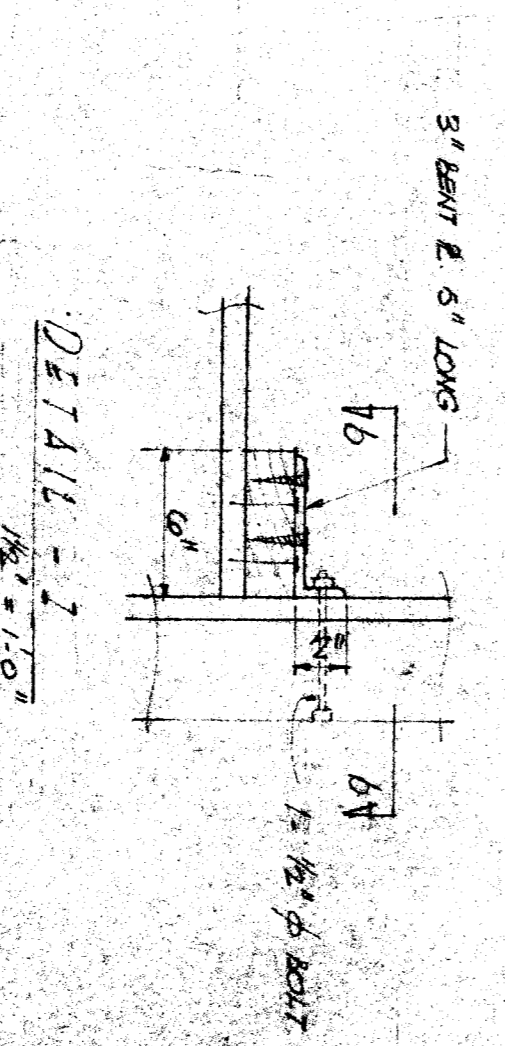
ROOF PLAN
8" = 1'-0"



SECTION THROUGH EQUIPMENT ROOM FOR MECHANICAL EQUIPMENT
1/8" = 1'-0"



DETAILS FOR EMBED SIMPLY OF BOOK CASES
NOT TO SCALE



DIVISION OF ARCHITECTURE

BOARD OF EDUCATION

OFFICE OF ARCHITECTURE
1809 B
SAN FRANCISCO, CALIFORNIA
M. W. S. / J. W. S.

Paul S. Cooper
M. W. S.

PLANS:
UNIT B.
MILK DRIVE SCHOOL.

Harold B. Hamill
HAROLD B. HAMILL
CONSULTING STRUCTURAL ENGINEER
REG. NO. 2 STRUC. JUR. 181
SAN FRANCISCO, CALIFORNIA

Whitney Biggar
WHITNEY BIGGAR ARCHITECT
REGISTERED ARCHITECT OF ARCHITECTS
5601 STOCKTON BLVD., SUITE 100
SAN FRANCISCO, CALIFORNIA
415-441-1111