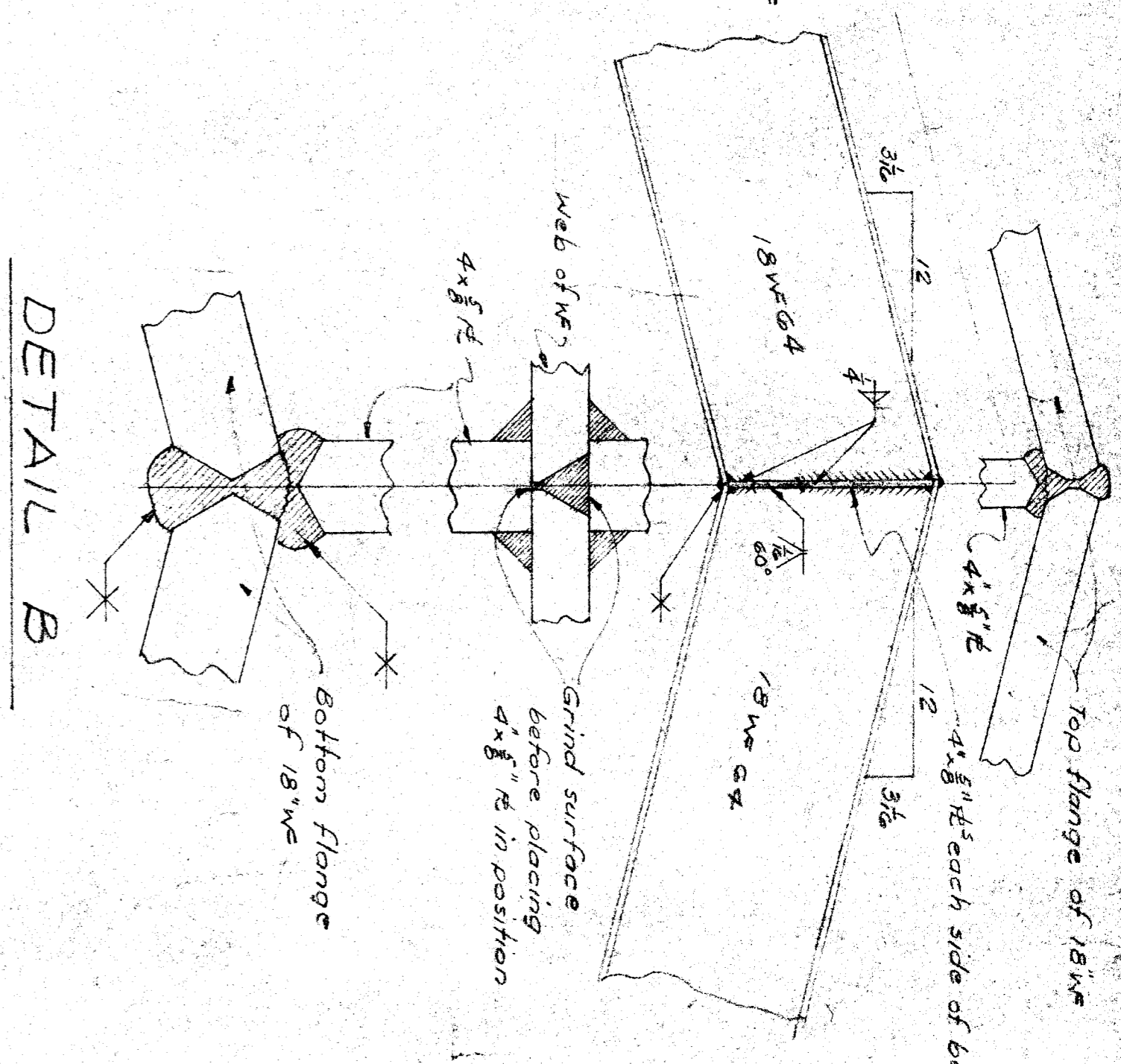
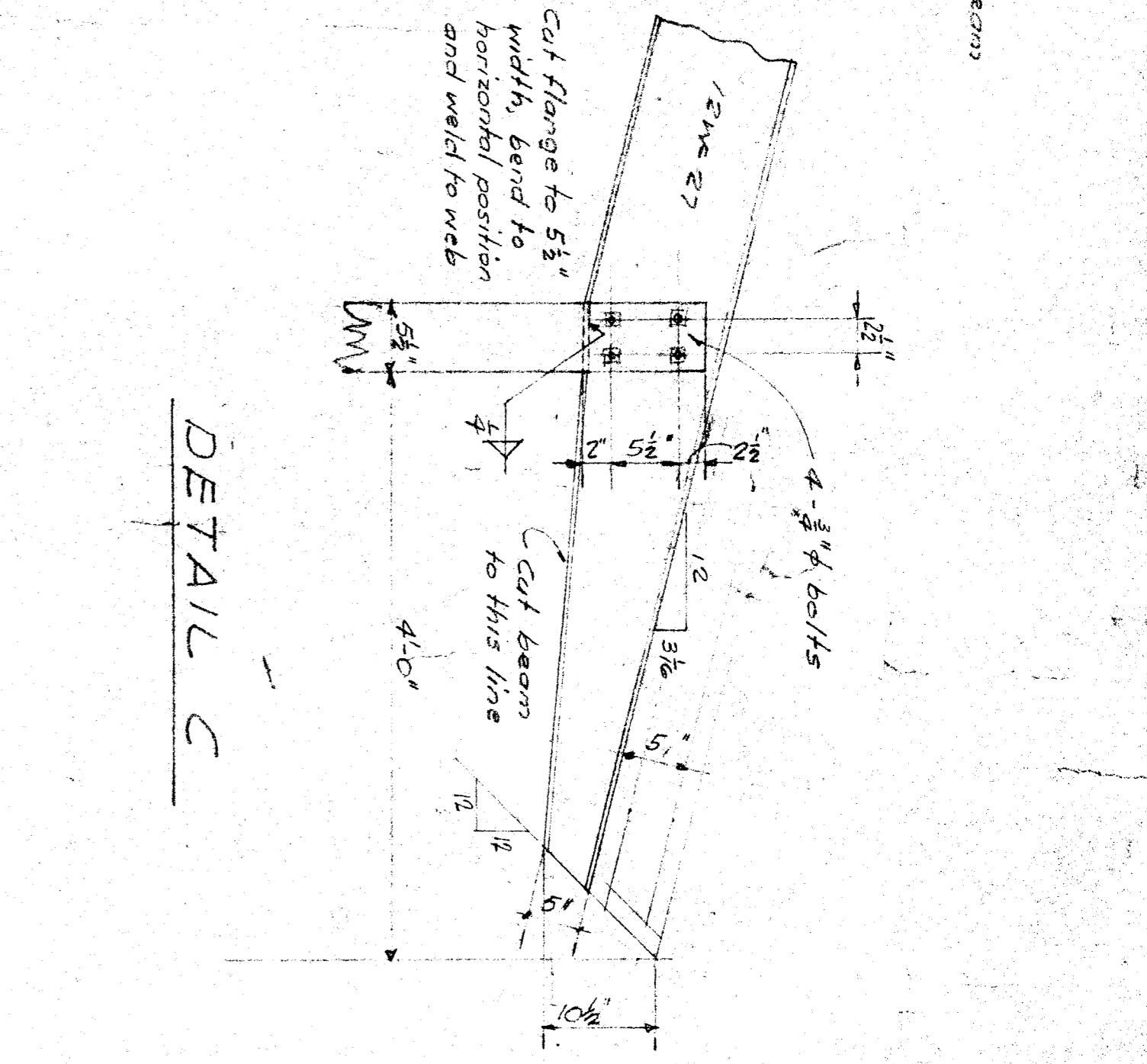


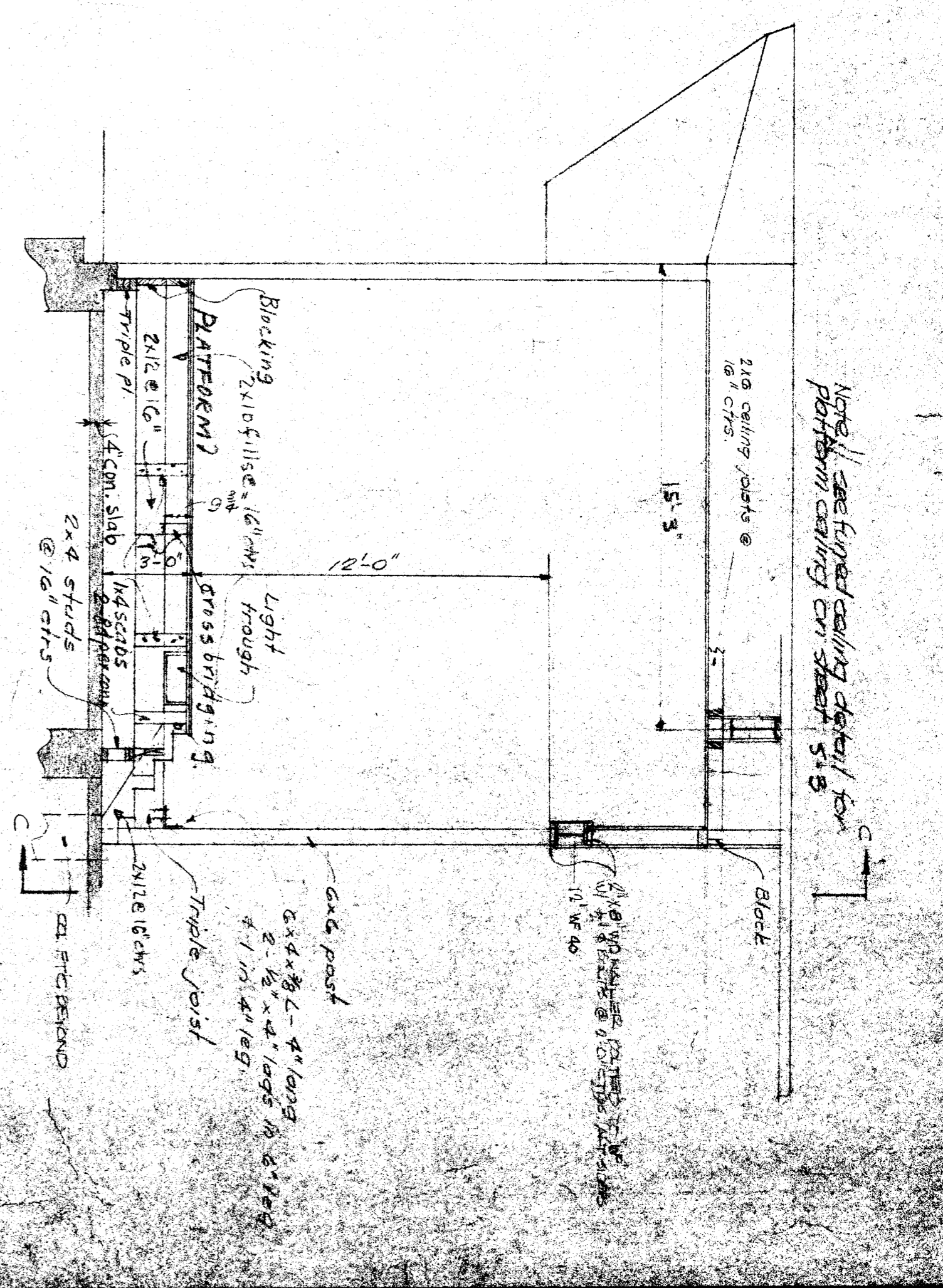
DETAIL A



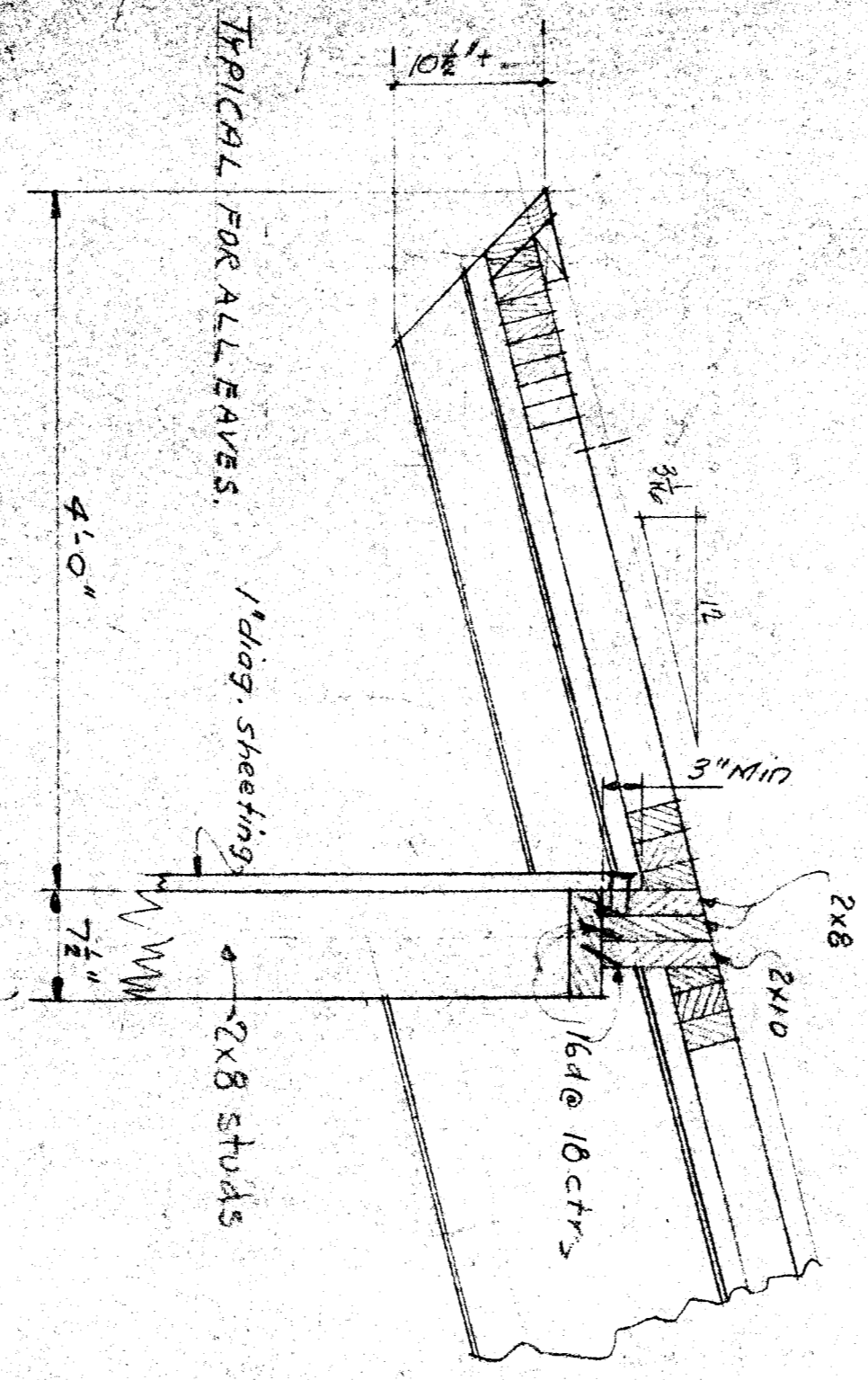
DETAIL B



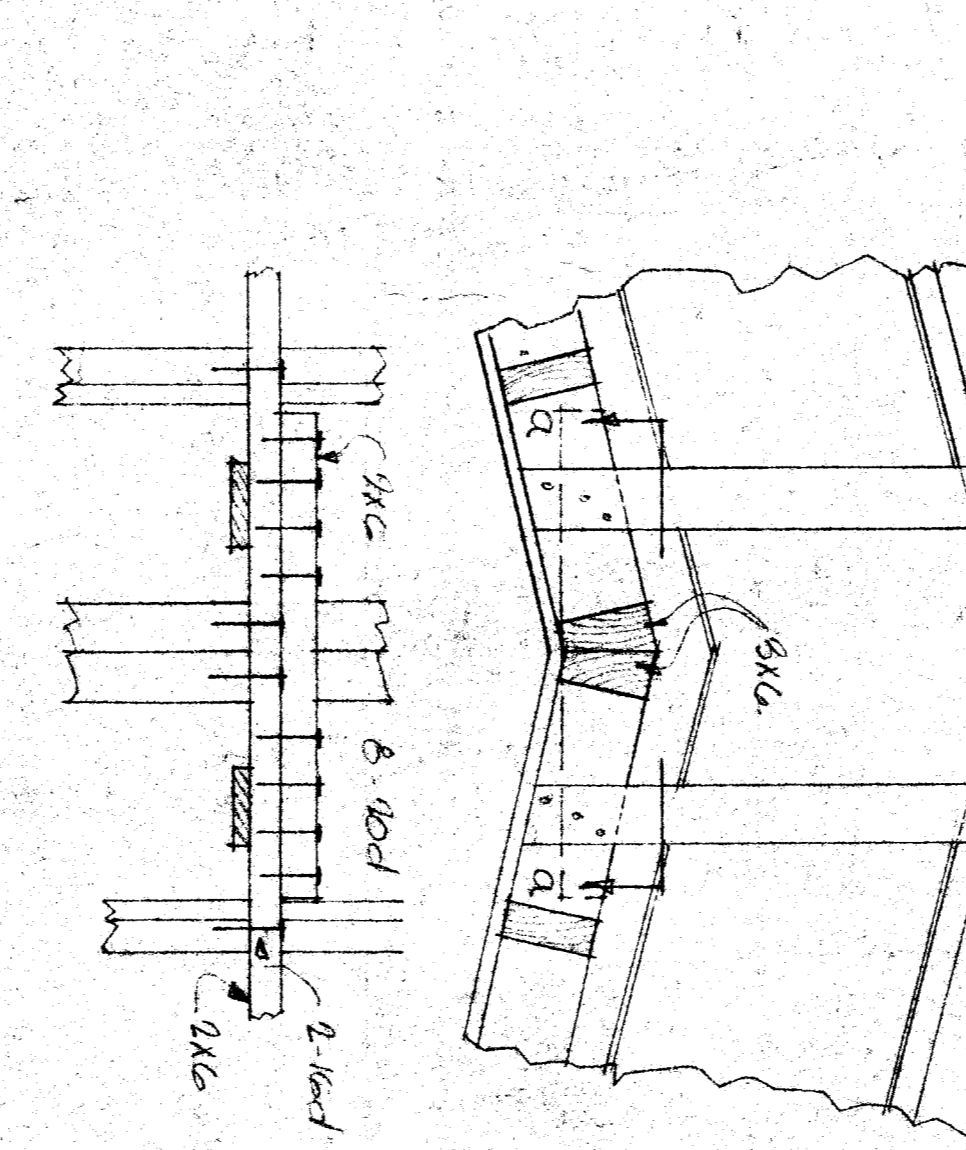
DETAIL C



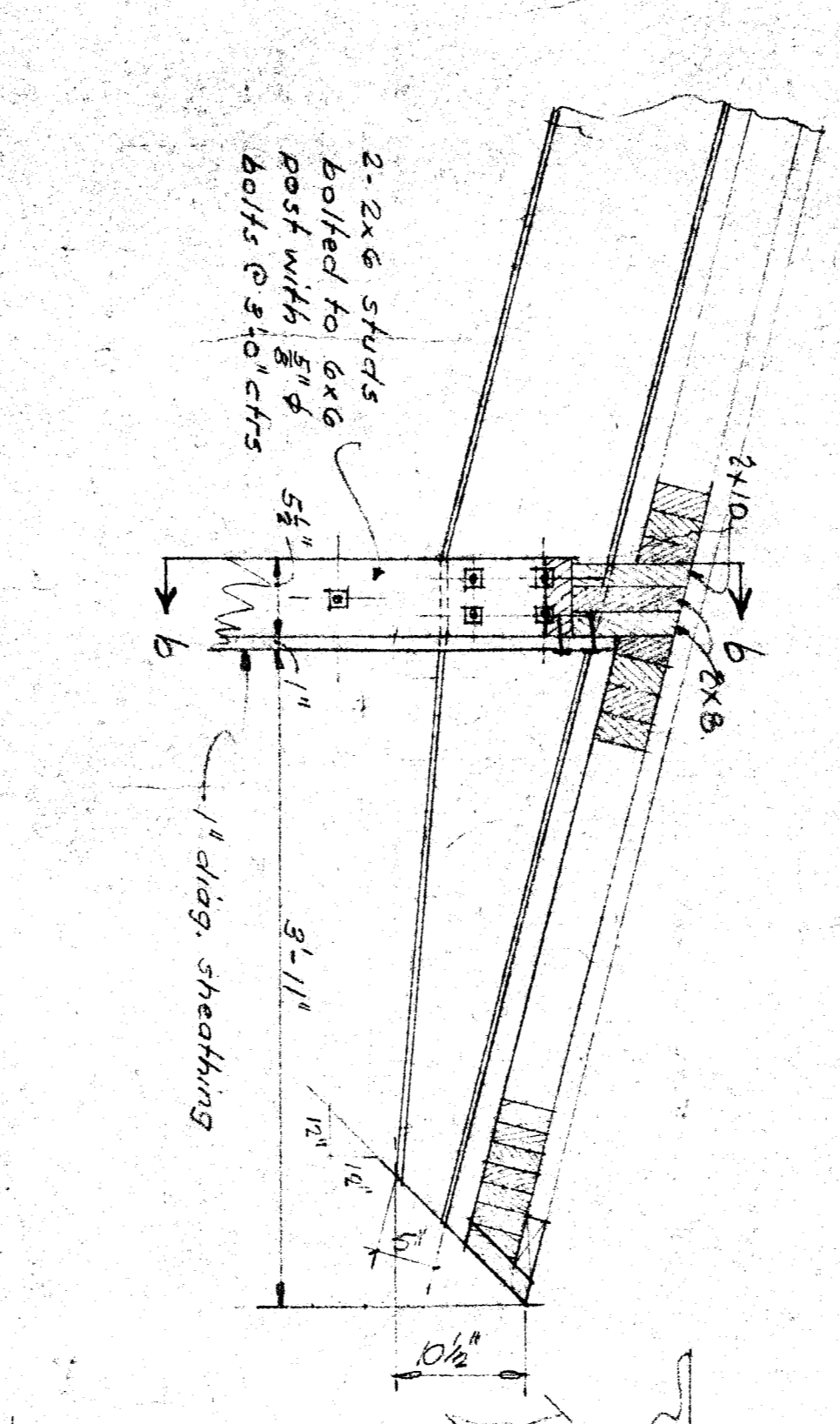
SECTION VV (S2)
1/4\"/>



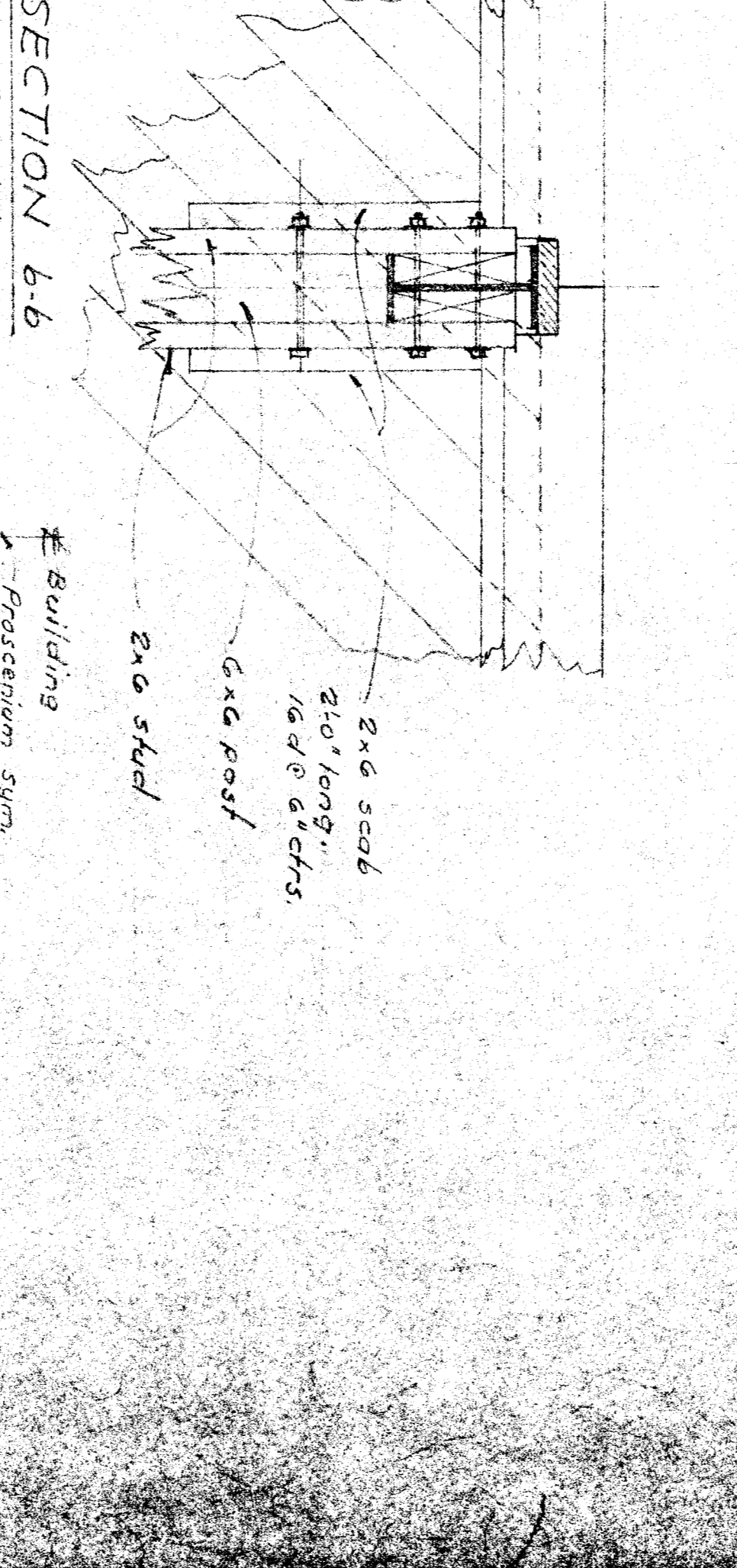
DETAIL D



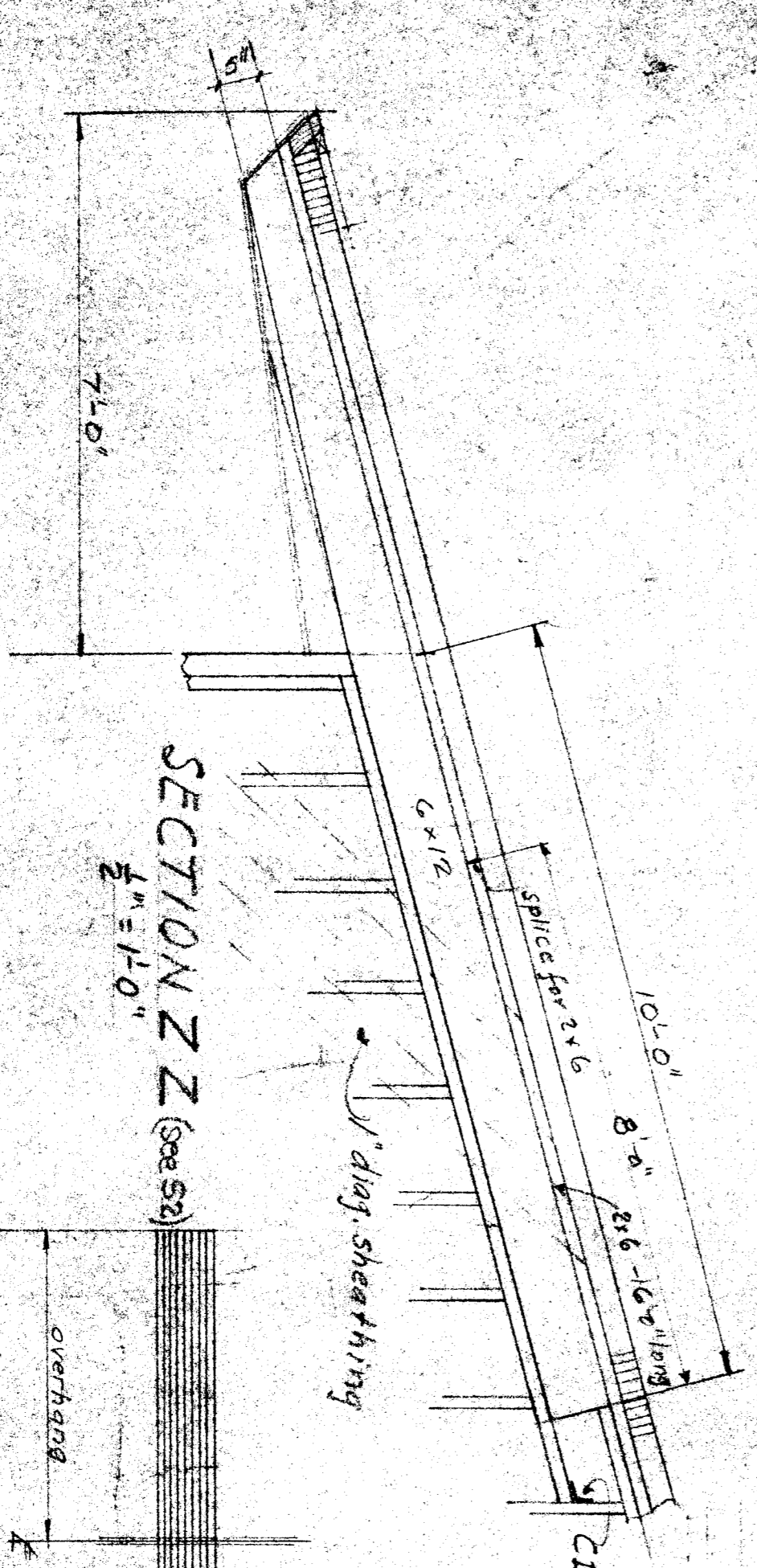
SECTION Q-Q



DETAIL F



SECTION 6-6
TYPICAL



SECTION ZZ (see S4)
1/2\"/>

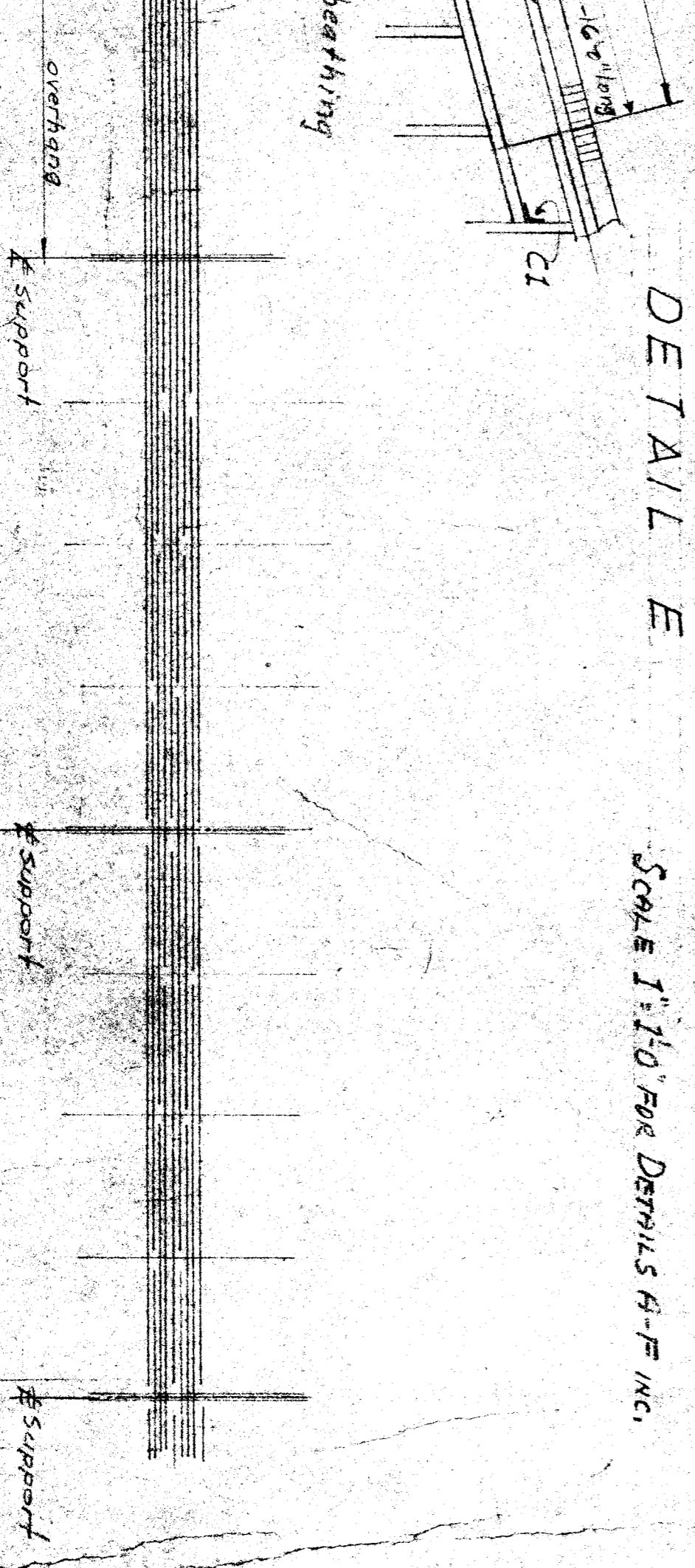
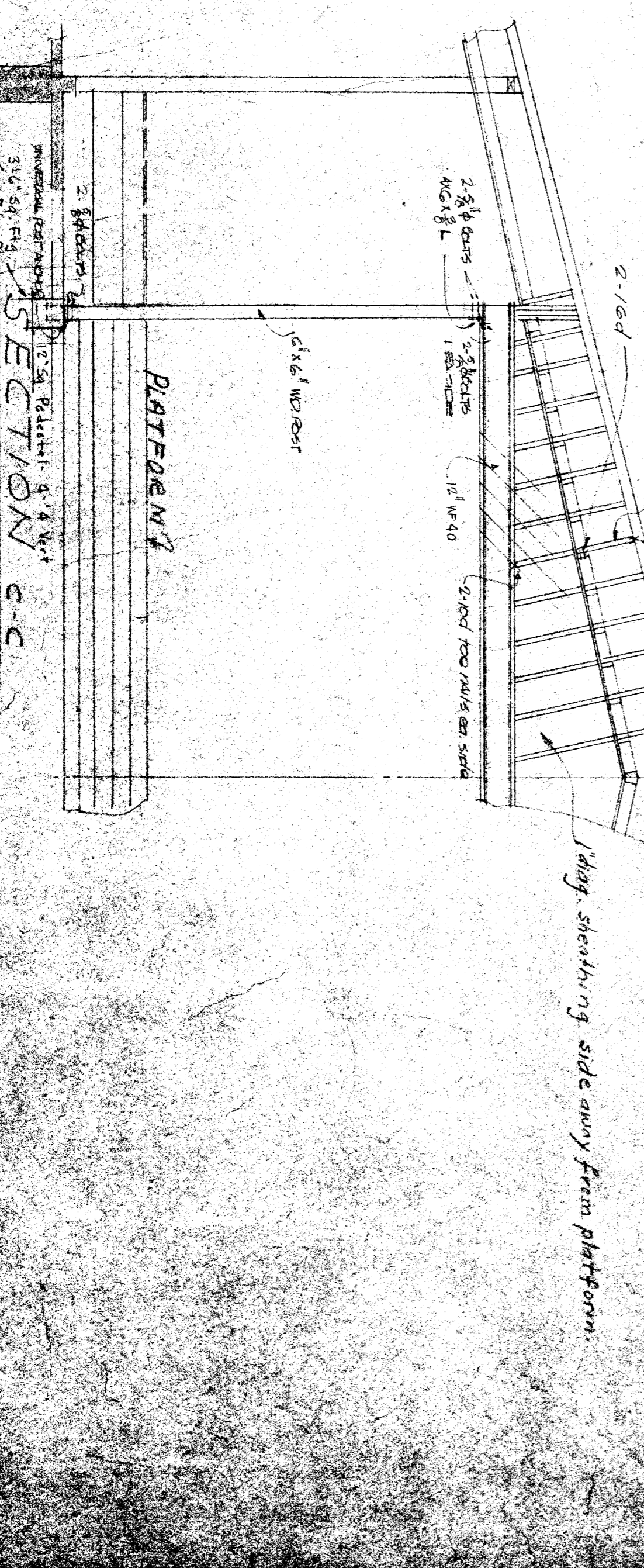


DIAGRAM SHOWING THE LOCATION OF JOINTS OF LAMINATIONS - TYPICAL FOR ALL BUILDINGS



SECTION C-C
1/4\"/>

DIVISION OF ARCHITECTURE

BOARD OF EDUCATION

Paul S. Cooper
Harold B. Hamill

18996 Amey St. D.C. 20538
MULLER & SULLIVAN ARCHT. INC.

DETAILS UNIT 11

PLATE ONE (CONT.)

Harold B. Hamill
HAROLD B. HAMMILL
CONSULTING STRUCTURAL ENGINEER
REG. 42 STRUCTURAL 191
SAN FRANCISCO, CALIFORNIA

Whitney Biggar
WHITNEY BIGGAR ARCHITECT
MEMBER AMERICAN INSTITUTE OF ARCHITECTS
1401 STOCKBANE BLDG. W. 11
BAKER STREET, CALIFORNIA
25285 REGISTERED ARCHITECT