

SECTION F1

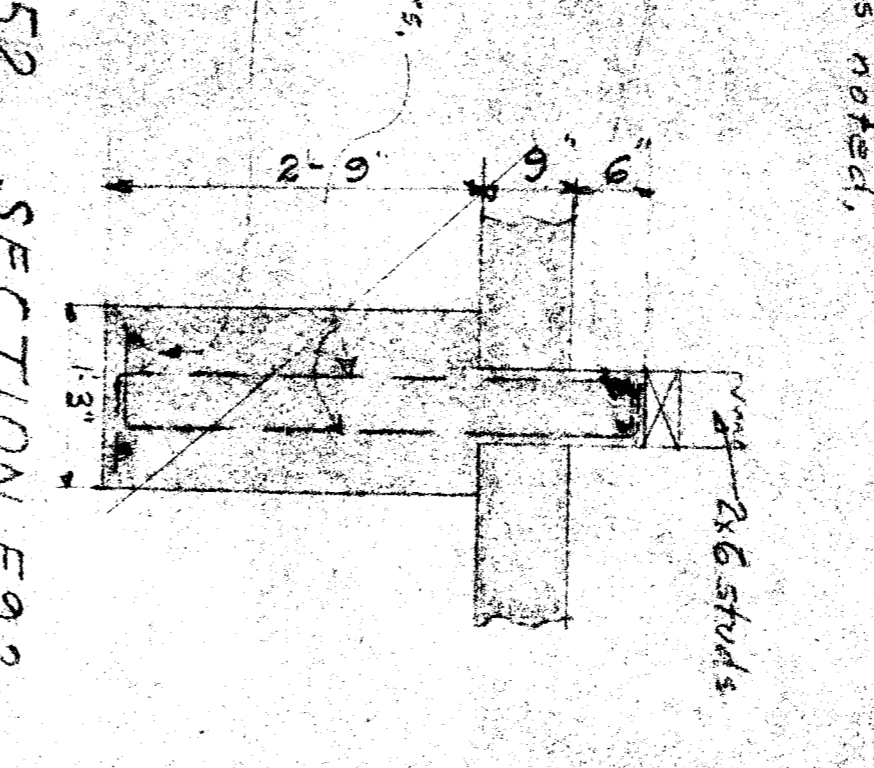
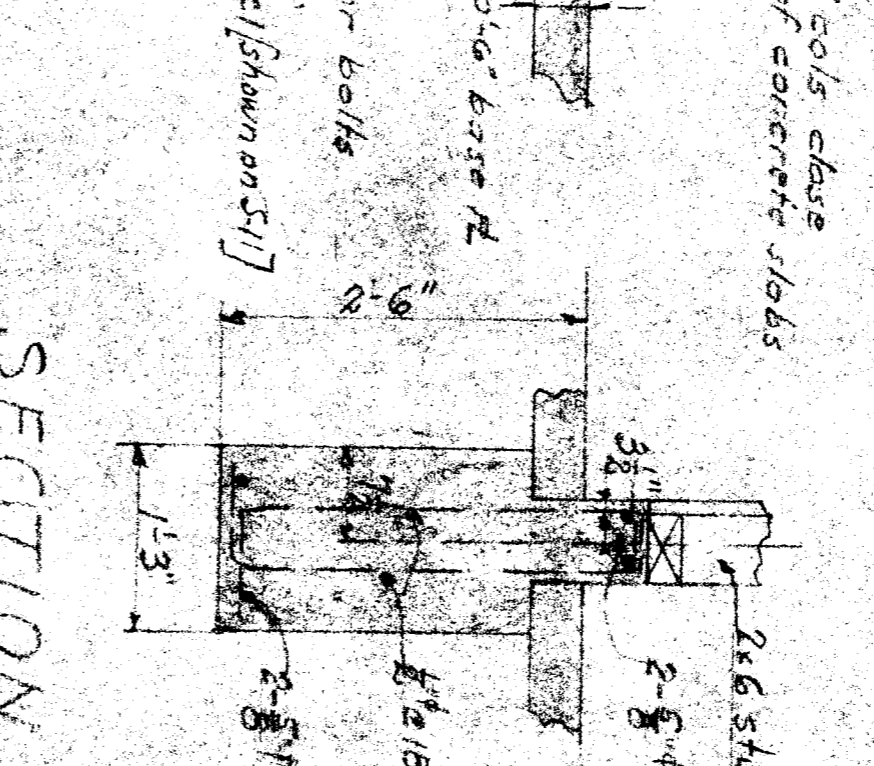
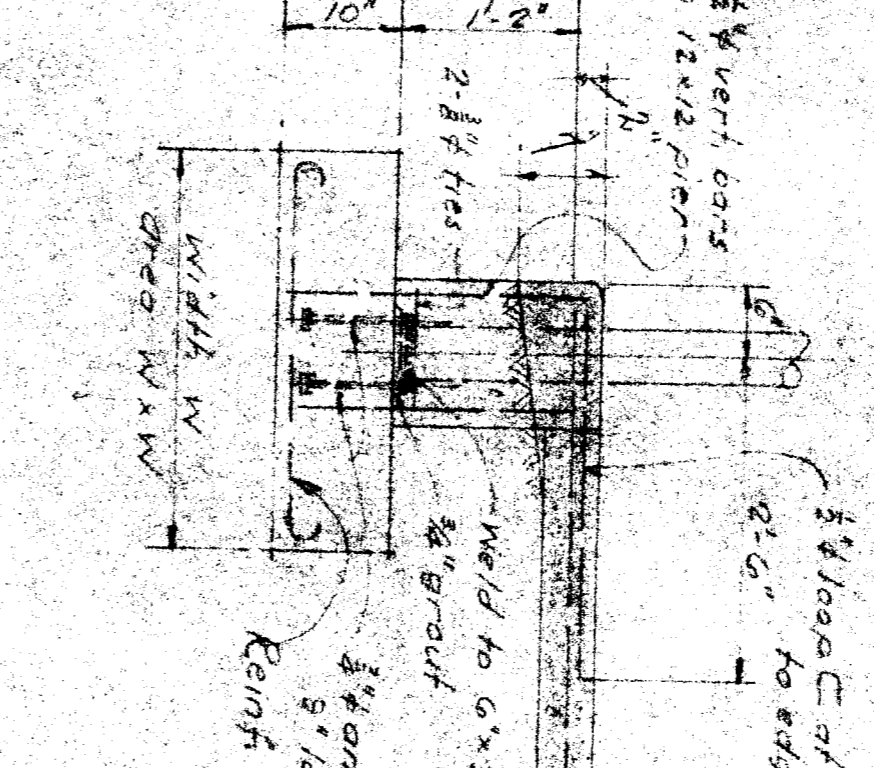
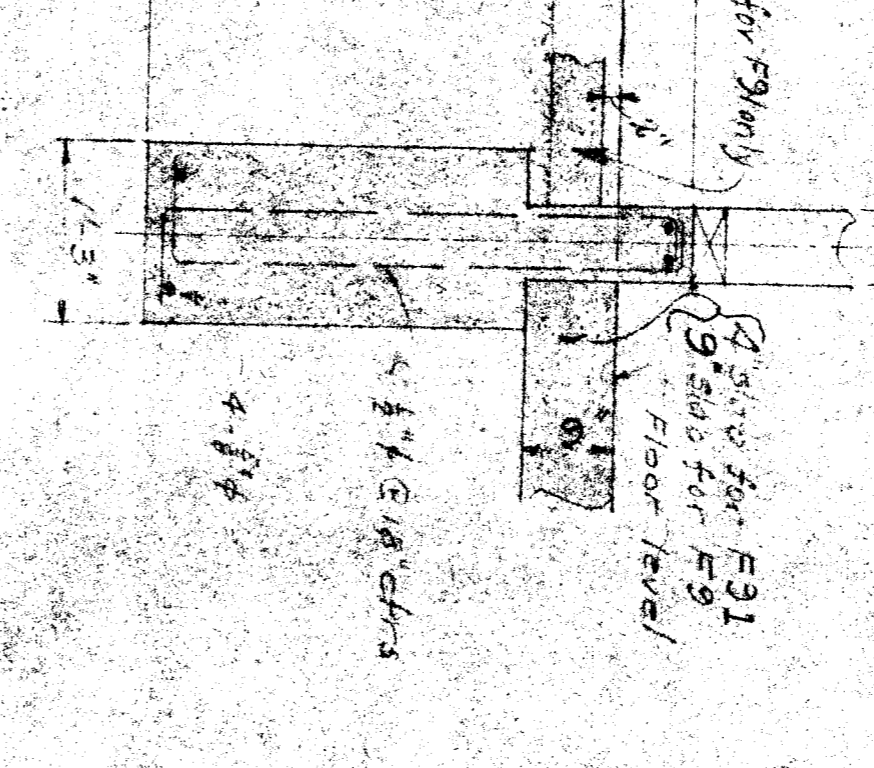
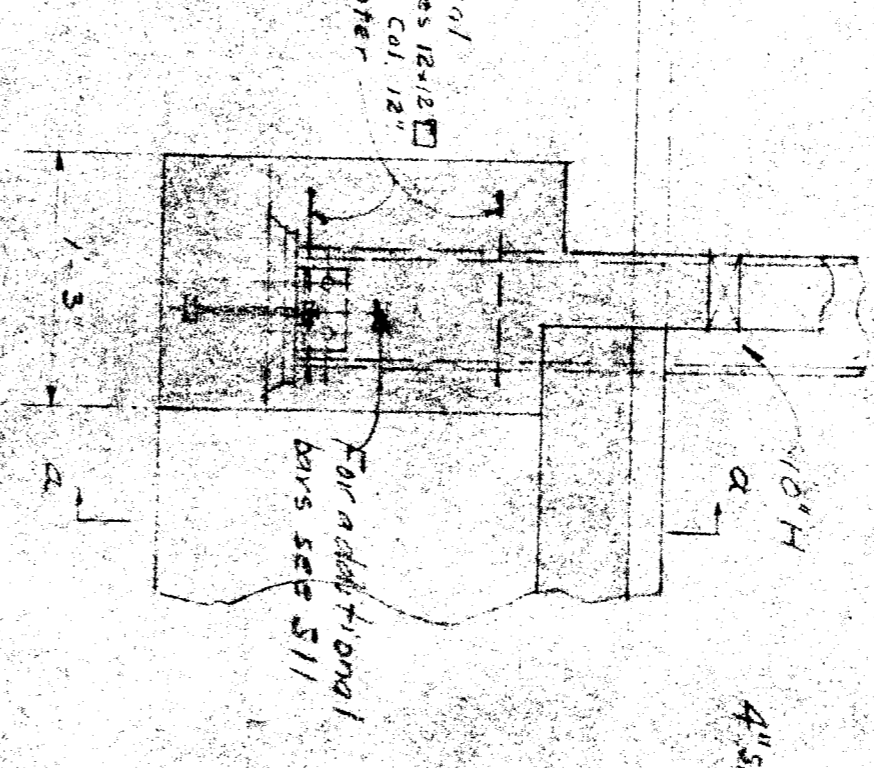
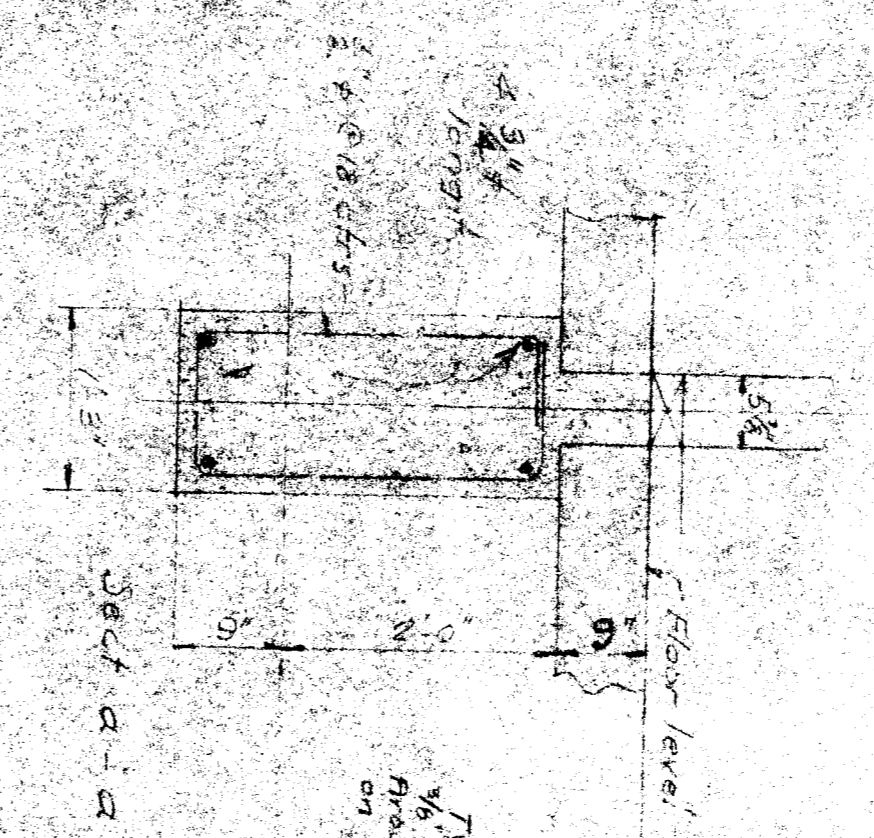
SECTION F2

SECTION F3

SECTION F4

SECTION F5

SECTION F6



SECTION F8

SECTION F9

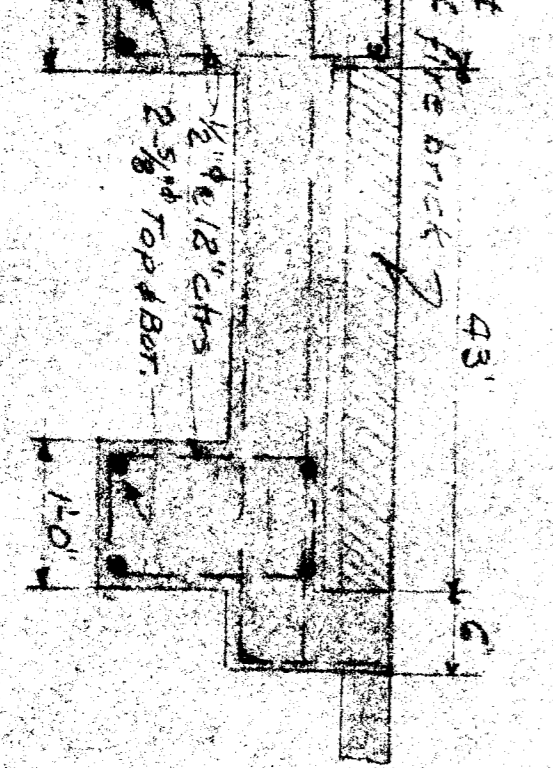
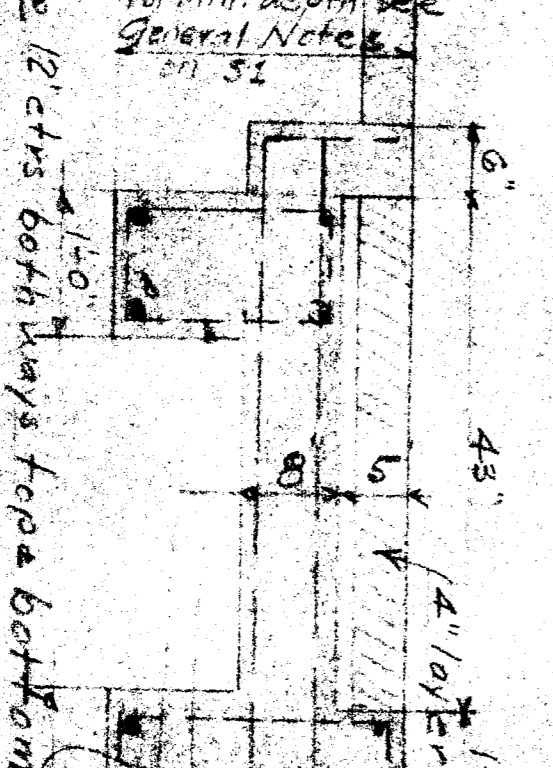
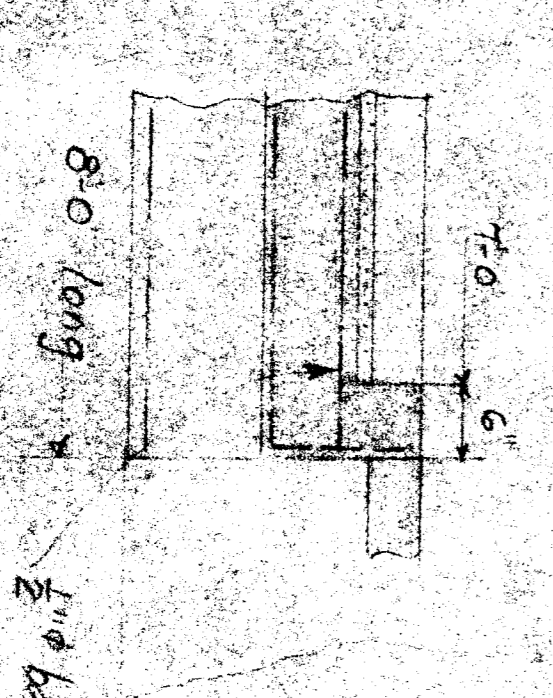
SECTION F92

SECTION F52

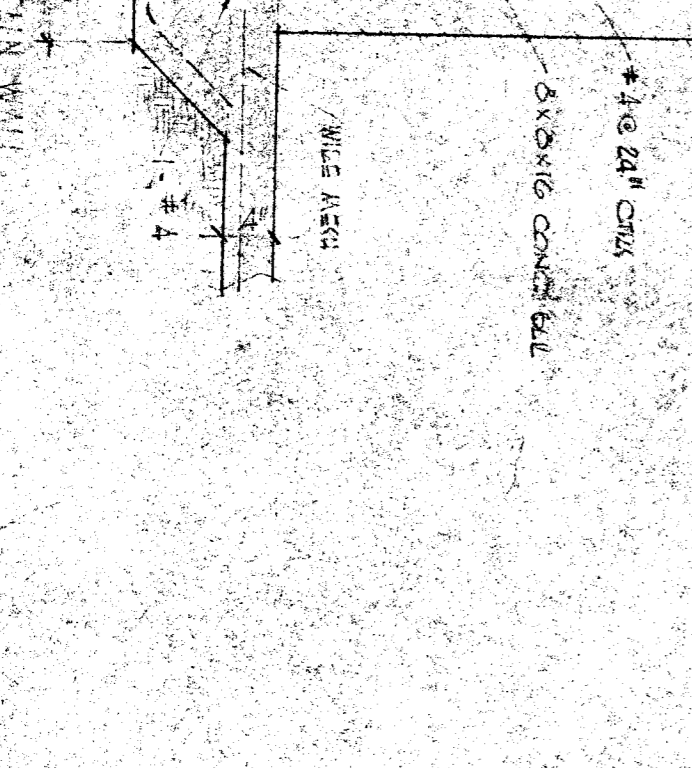
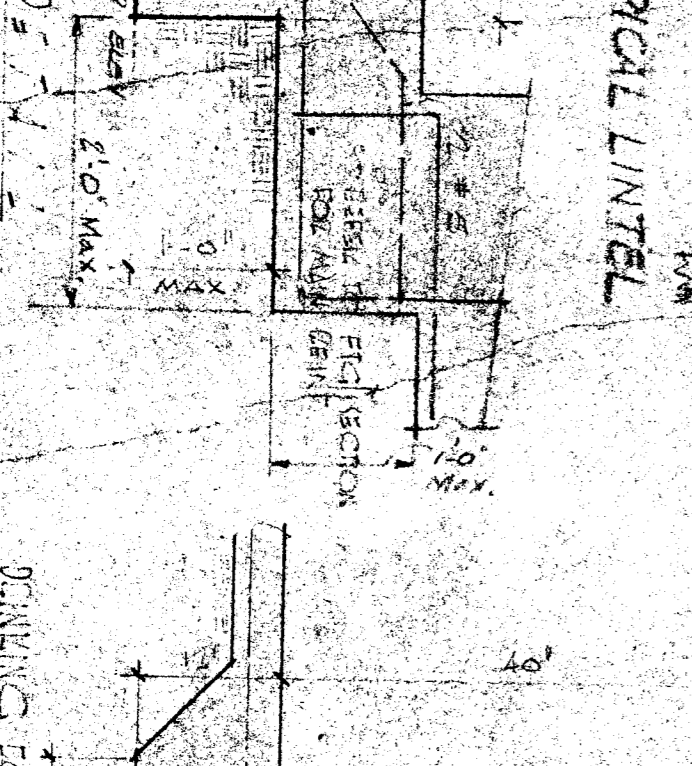
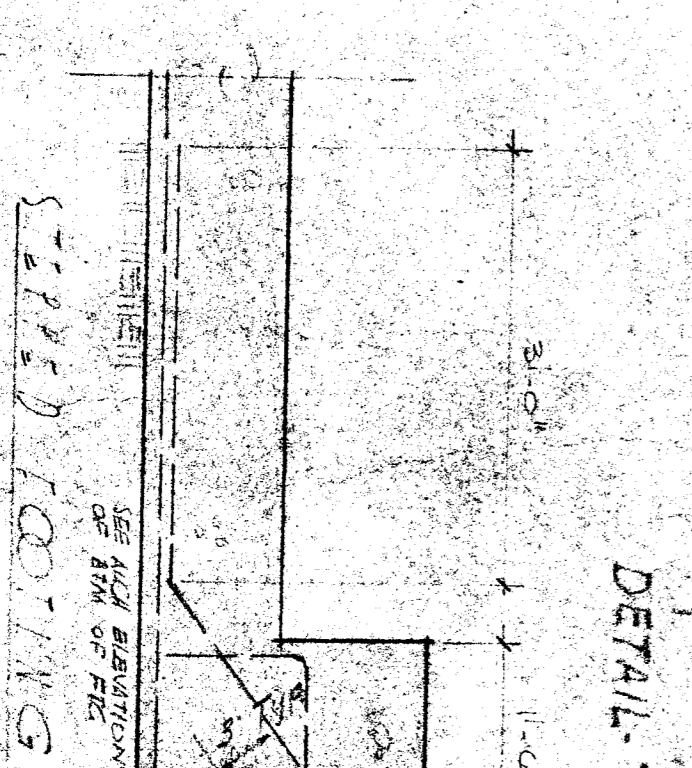
SECTION F52

SECTION F92

TYPICAL DETAIL OF FOOTING INTERSECTIONS



FOUNDATION FOR BOILERS

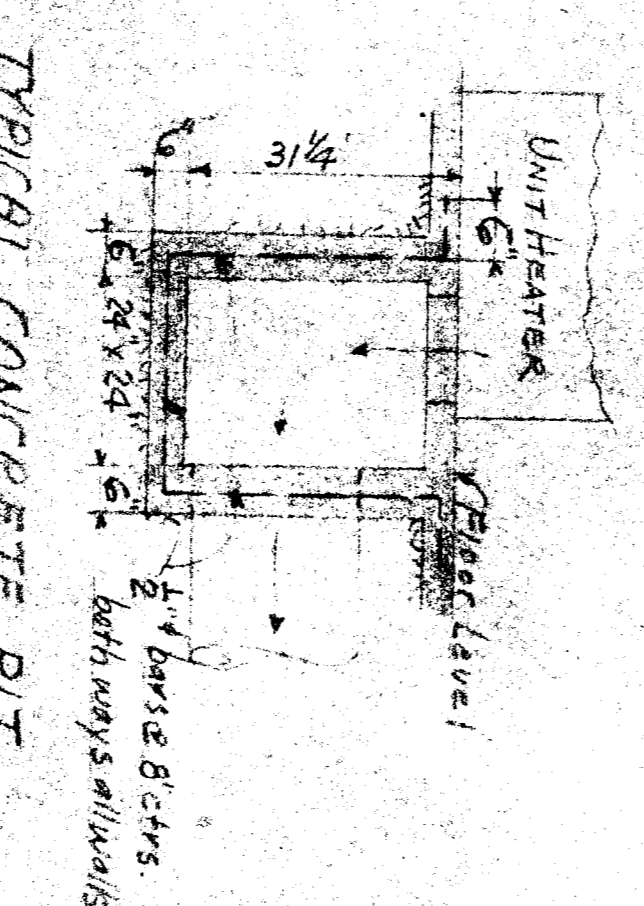
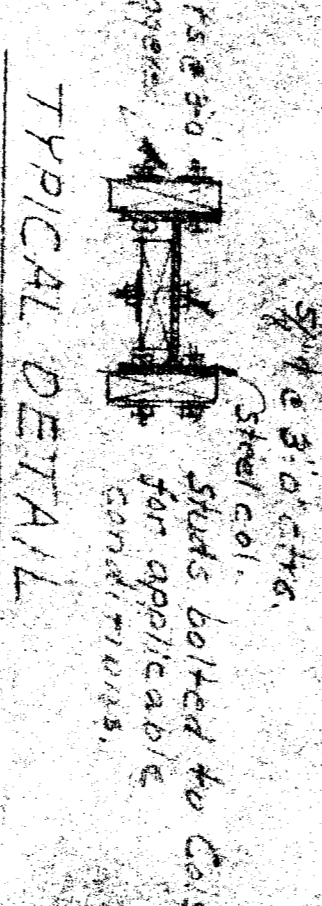


SECTION F9

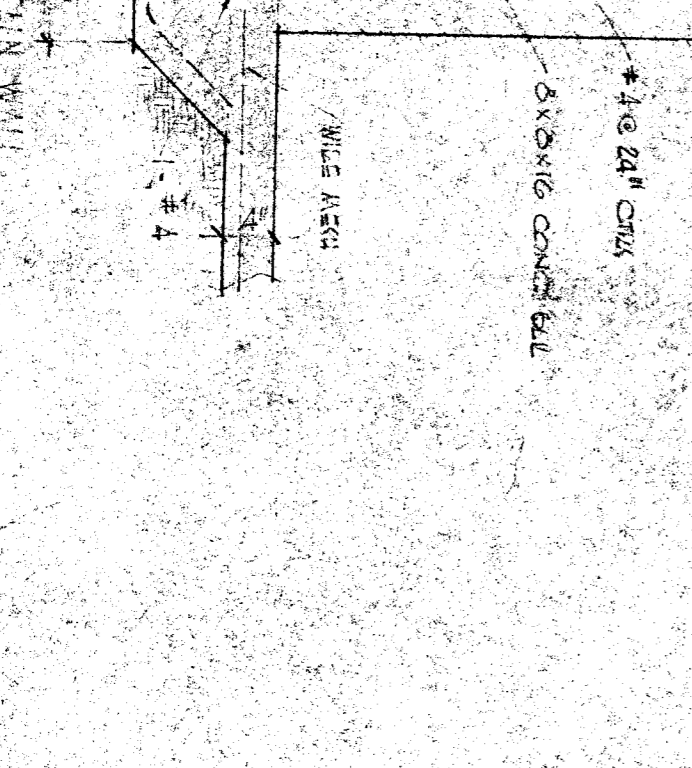
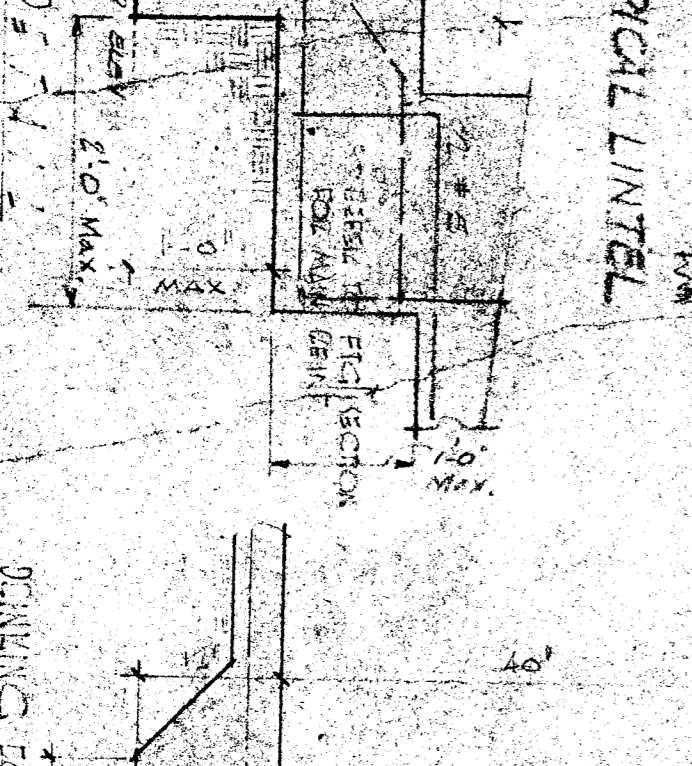
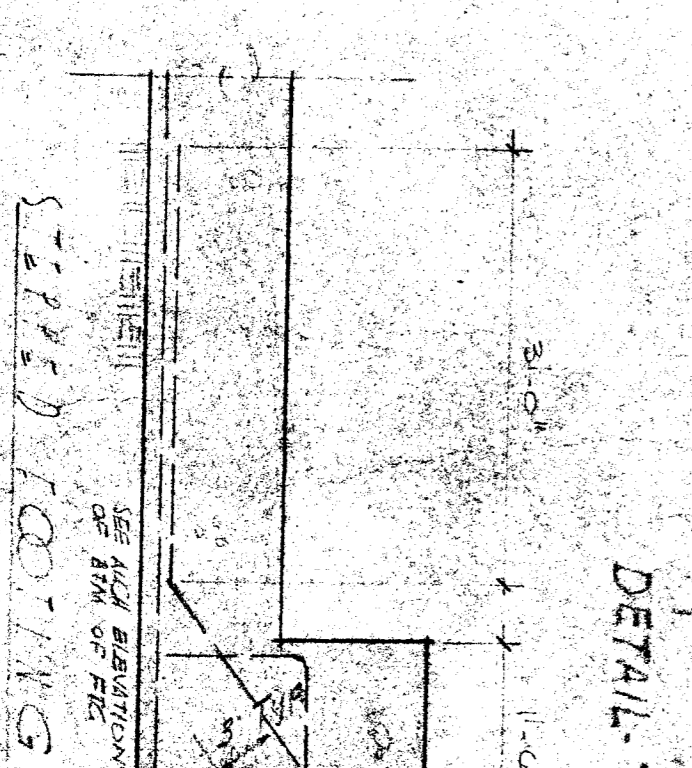
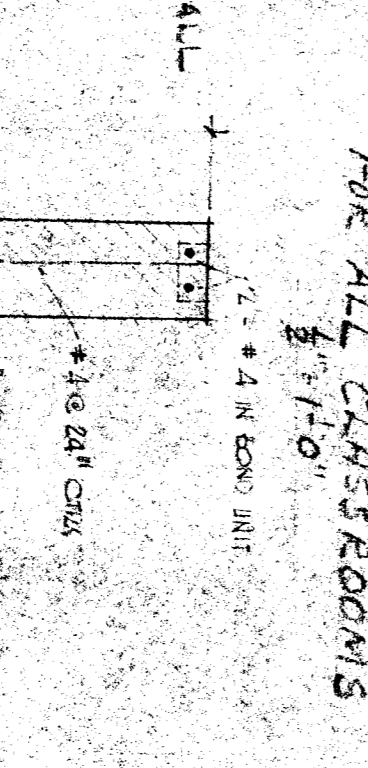
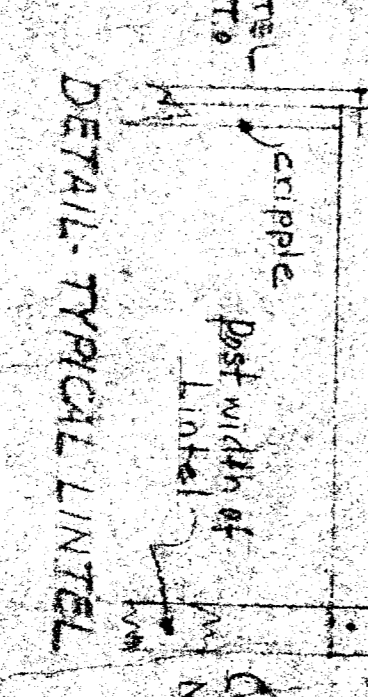
TYPICAL DETAIL OF COVERED PASSAGEWAY

SECTION F52

SECTION F92



TYPICAL CONCRETE PIT FOR ALL CLASSROOMS



SECTION F41 same as F4 except for partition of slab.

SECTION F51 same as F5 except as noted.

SECTION F61 same as F6 except as noted.

GENERAL NOTES

1. Strength of concrete to be not less than 3000 lbs per sq ft.
2. Maximum reinforcement shall be per sq ft.
3. Minimum reinforcement shall be provided in all slabs.
4. All steel members to be galvanized.
5. All steel members to be galvanized.
6. All steel members to be galvanized.
7. All steel members to be galvanized.
8. All steel members to be galvanized.
9. All steel members to be galvanized.
10. All steel members to be galvanized.
11. All steel members to be galvanized.
12. All steel members to be galvanized.
13. All steel members to be galvanized.
14. All steel members to be galvanized.
15. All steel members to be galvanized.
16. All steel members to be galvanized.
17. All steel members to be galvanized.
18. All steel members to be galvanized.
19. All steel members to be galvanized.
20. All steel members to be galvanized.
21. All steel members to be galvanized.
22. All steel members to be galvanized.
23. All steel members to be galvanized.
24. All steel members to be galvanized.
25. All steel members to be galvanized.
26. All steel members to be galvanized.

FOOTING SECTIONS FOR ENTIRE PLANT. HAROLD B. HAMMILL ARCHITECT. REGISTERED ARCHITECT. 3601 STOCKDALE HIGHWAY, BAKERSFIELD, CALIFORNIA. 29285 REGISTRATION C. 1978