

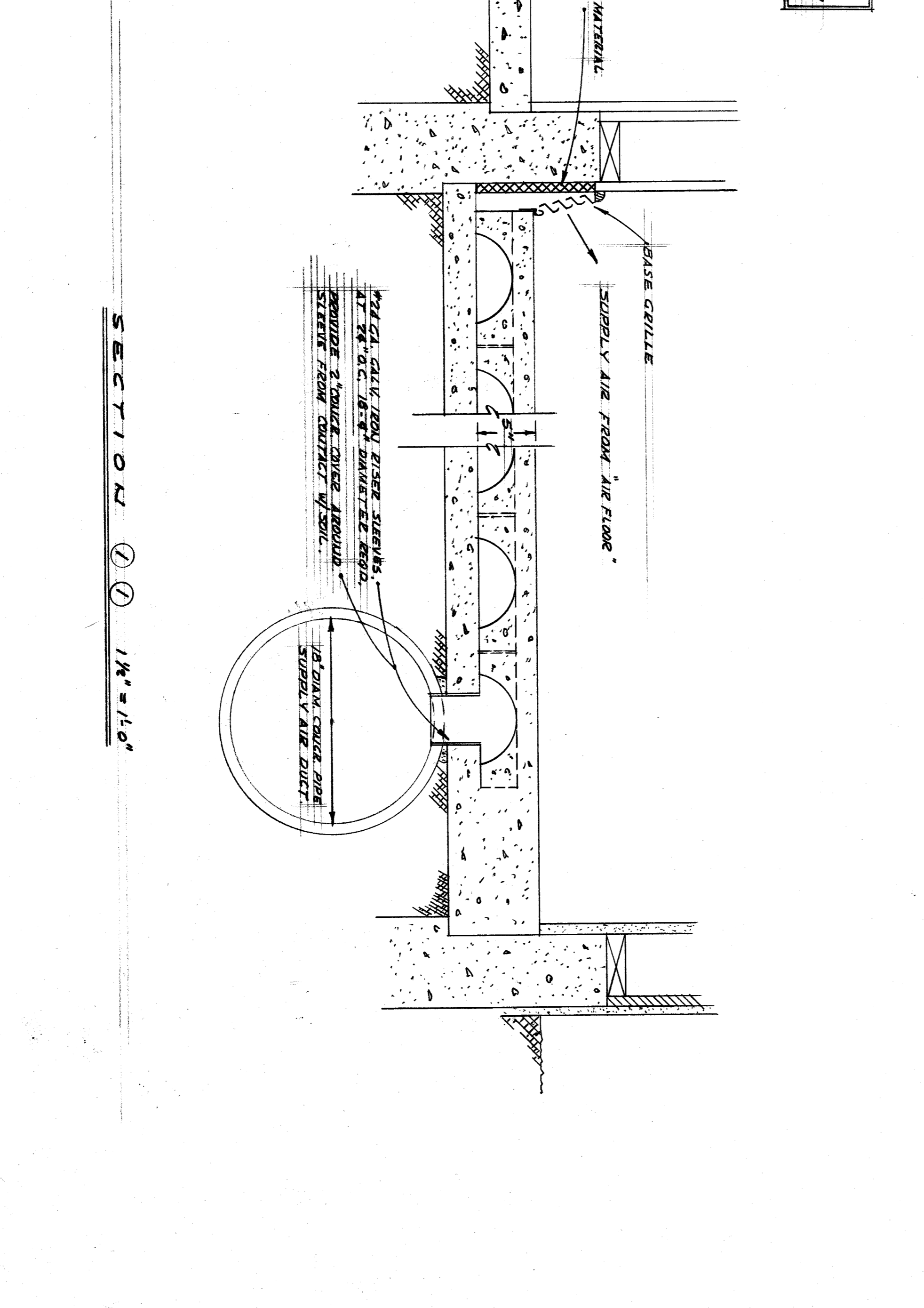
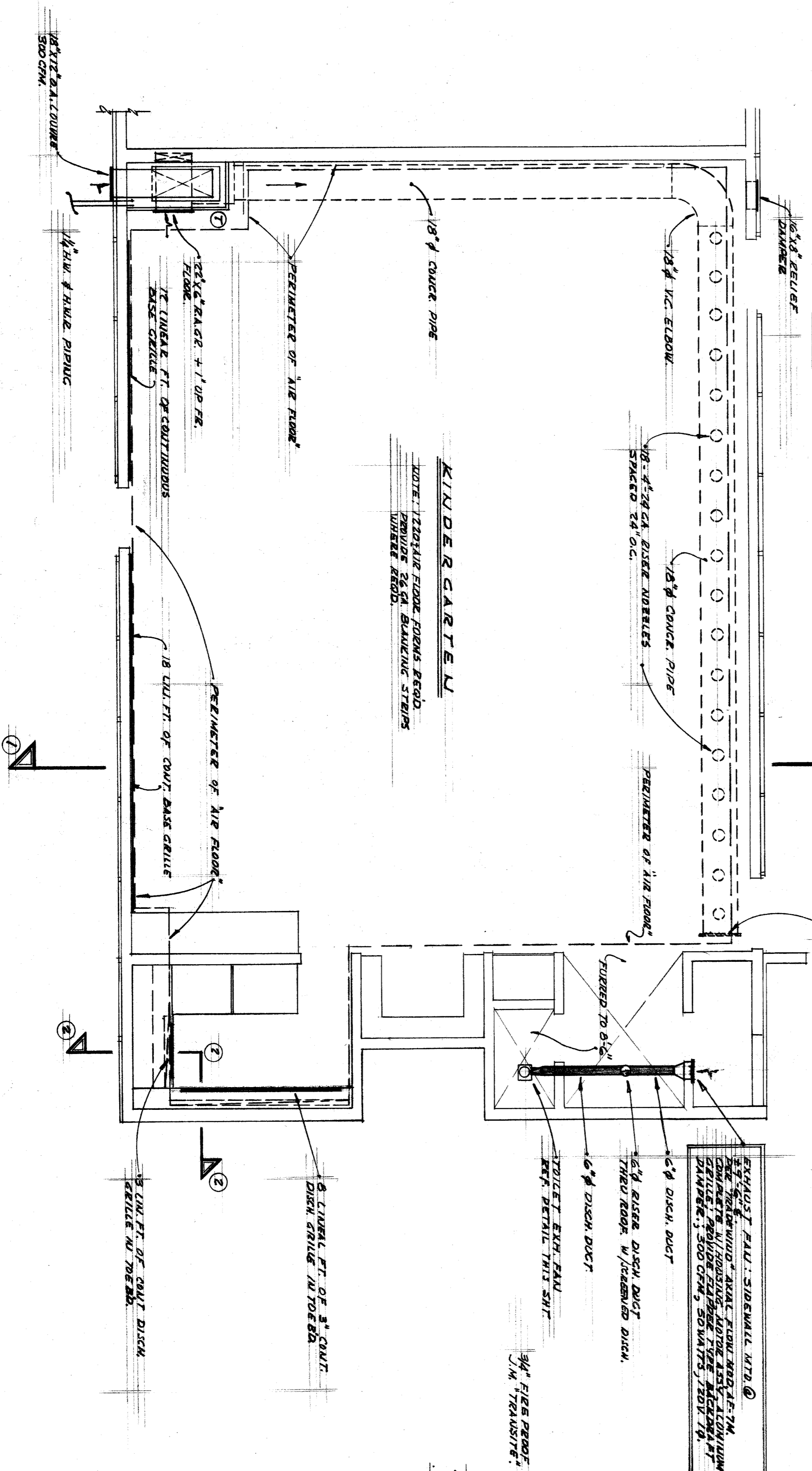
DETAIL OF KINDERGARTEN TOILET EXHAUST FAN (TYPE FOR 2)

SECTION 2-2

PLAN

DETAILS OF KINDERGARTEN HEATING UNIT

SCALE: 1/8" = 1'-0"



SECTION 1-1

KINDERGARTEN UNIT 2

APPROVED:	APPROVED:	APPROVED: DIVISION OF ARCHITECTURE	APPROVED: BOARD OF EDUCATION	TITLE:	PROJECT NO. 2152
		STATE OF CALIFORNIA, DEPARTMENT OF PUBLIC WORKS DIVISION OF ARCHITECTURE		HEATING & VENTILATING KINDERGARTEN PARK DRIVE SCHOOL	DRAWN BY: J.P.
		8096 APPROVED DEC 22 1938			CHECKED BY: J.P.
		Mr. M. S. Libbey			DATE: 1/11/39
					SHEET
					OF 11
				WHITNEY BIGGAR ARCHITECT MEMBER AMERICAN INSTITUTE OF ARCHITECTS 3601 STOCKDALE HIGHWAY BAKERSFIELD, CALIFORNIA FA 57227 REGISTRATION C-1126	