

MULTI-PURPOSE ROOM

490 SEATING CAPACITY
 220 DINING CAPACITY
 ACTUALLY 111' x 64' x 11'
 25' INTERIOR ELEVATIONS

NOTE: DO NOT REMOVE METAL THRESHOLDS TO BE REMOVED
 MAY BE REPIRE IN PROGRESS

69'-7"

FLOOR PLAN
 SCALE 1/8" = 1'-0"

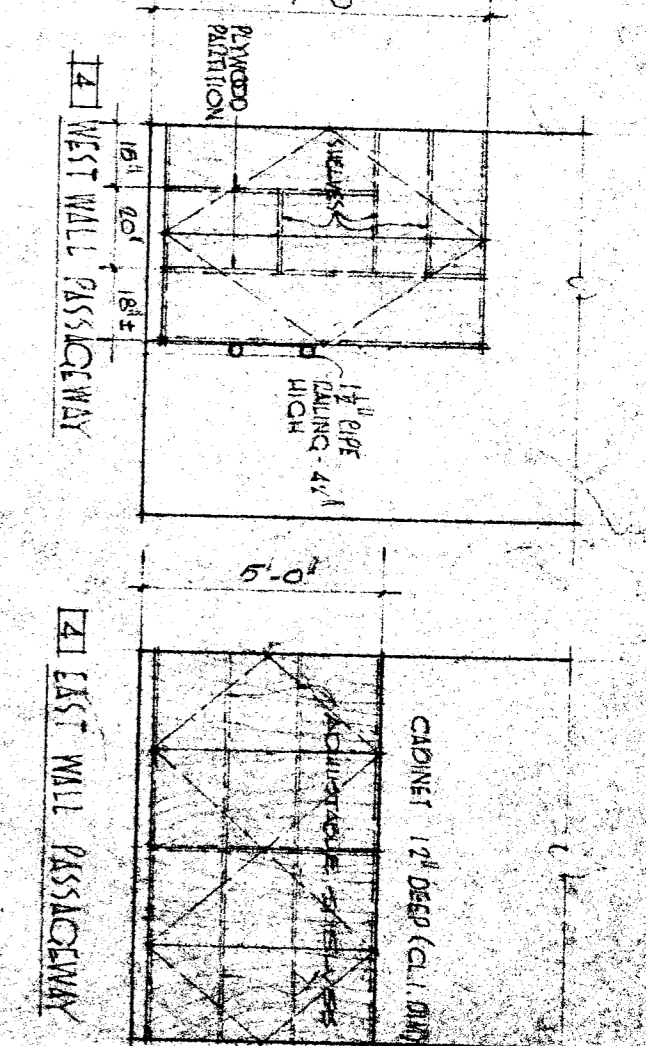
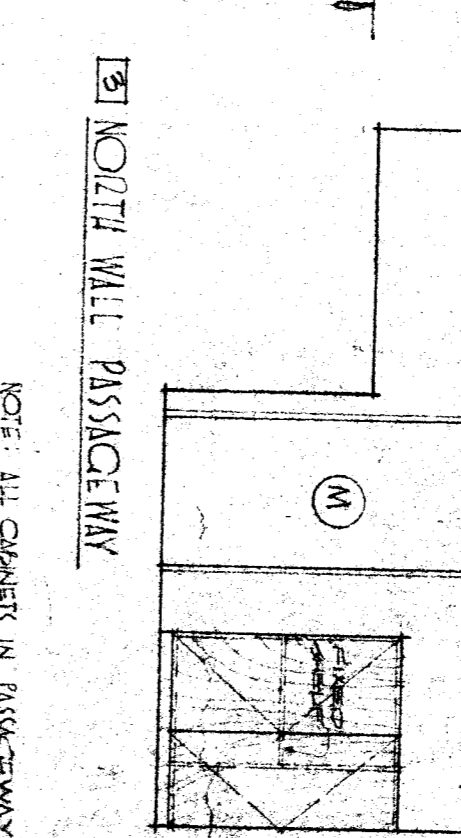
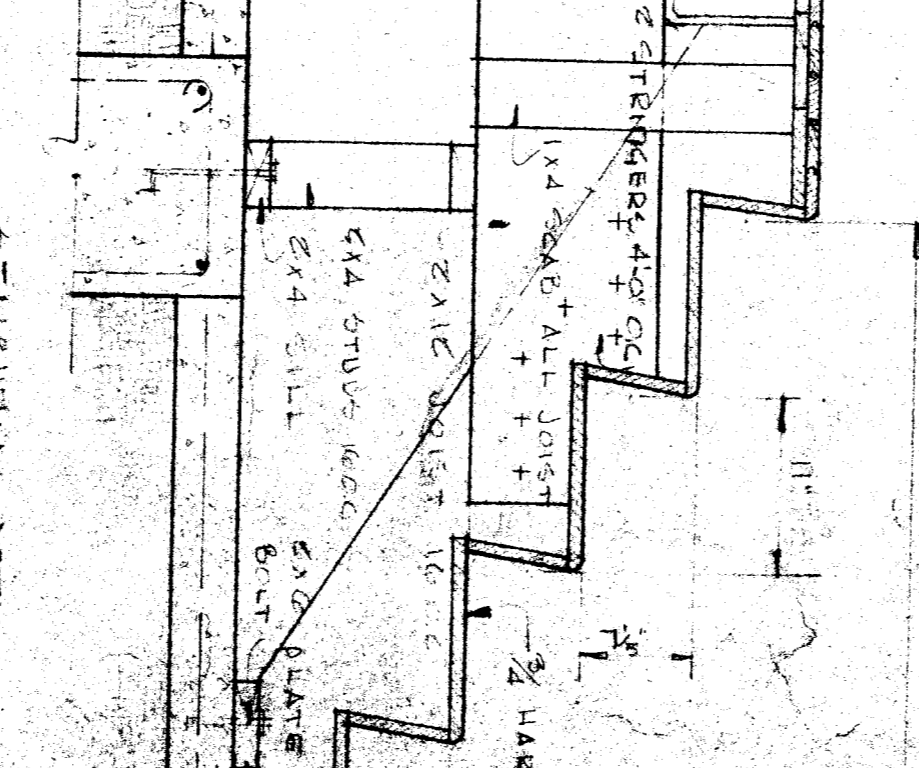
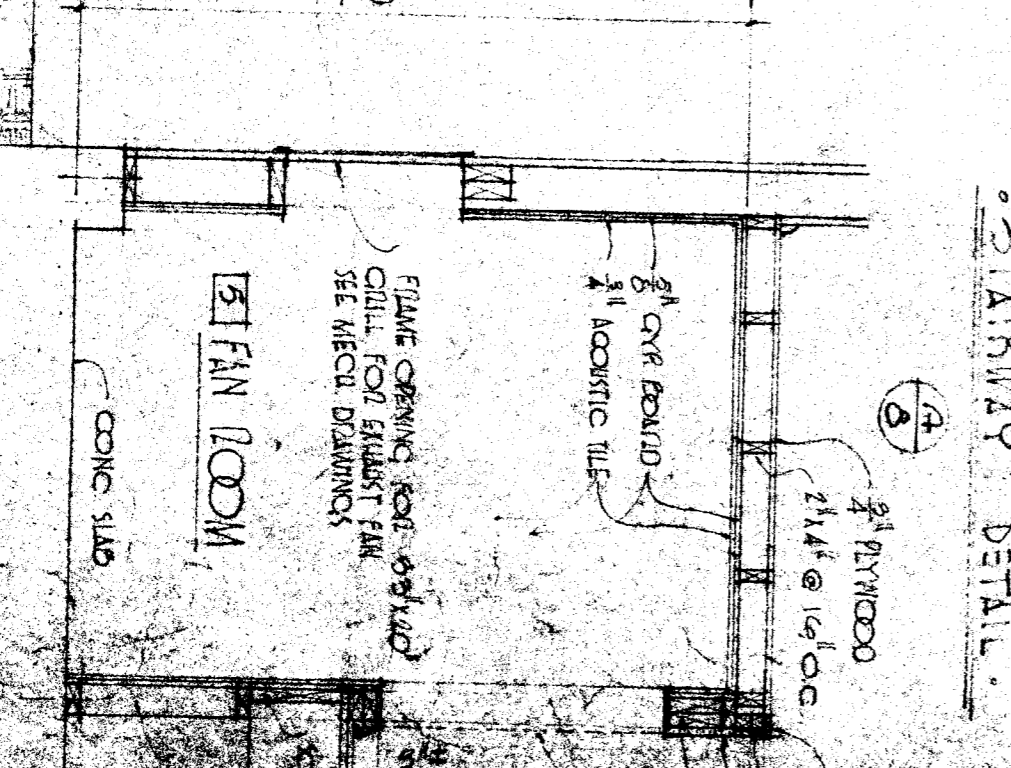
DIVISION OF ARCHITECTURE

BOARD OF EDUCATION

DRIVE SCHOOL CITY SCHOOL DISTRICT CALIFORNIA

FLOOR PLAN MULTIPURPOSE ROOM

SECTION THRU FAN RM



NOT ALL STUDS, C & G DIMENSIONS OTHERWISE SHOWN

APPROVED DEC 28 1953

FOR THE ARCHITECT

WHITNEY BIGGAR ARCHITECT

MEMBER AMERICAN INSTITUTE OF ARCHITECTS

3601 STOCKDALE HIGHWAY

BAKERFIELD CALIFORNIA

28265 REGISTRATION NO. 1271