

DANNY E. ORDIZ, AIA  
ARCHITECT C-14728  
WILLIAM J. MELBY, AIA  
ARCHITECT C-16835

IDENTIFICATION STAMP  
DIVISION OF STATE ARCHITECT  
OFFICE OF REGULATION SERVICES  
APPL 03-117598  
FILE # 15-6  
DATE SEP 25 2017  
APN # #APN

MODERNIZATION AT MARSA  
VOORHIES ELEMENTARY  
SCHOOL  
6001 PIONEER DRIVE  
BAKERSFIELD, CA 93307  
FOR:  
BAKERSFIELD CITY  
SCHOOL DISTRICT  
1300 BAKER STREET  
BAKERSFIELD CA 93305

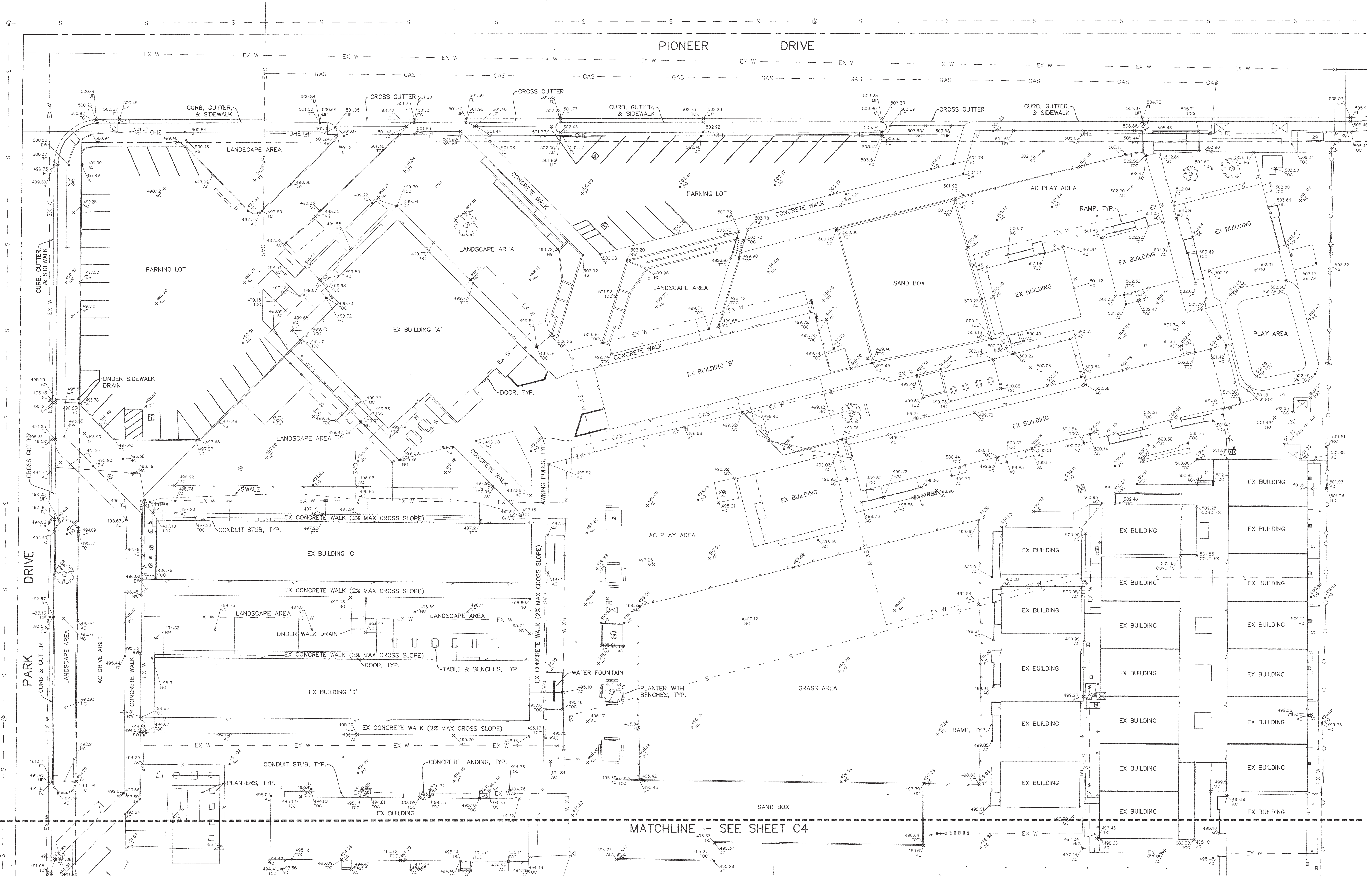
PTN: 63321-186  
KEY PLAN

MARK	DATE	DESCRIPTION
△	12-09-15	DSA SUBMITTAL
△		
△		
△		

JOB NUMBER:  
2015-1663  
CAD DRAWING FILE:  
1663 VOORHIES MOD-Site Plan - CD10.plt

DRAWN BY:  
CHECKED BY:  
CHECK AND VERIFY ALL DIMENSIONS BEFORE  
PROCEEDING WITH THE WORK.  
REPORT DISCREPANCIES TO THE ARCHITECT.  
THE DRAWINGS, SEALS, AND DESIGNS  
REPRESENTED ON THIS SHEET ARE THE  
PROPERTY OF THE ARCHITECT.  
ORDIZMELBY ARCHITECTS, INC. 2014  
SHEET TITLE  
**TOPOGRAPHIC SURVEY**

SHEET IDENTIFICATION NUMBER  
**C-3**  
SHEET 3 OF 11

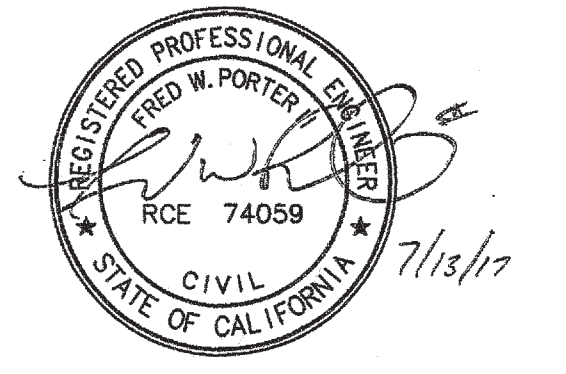


**TOPOGRAPHIC SURVEY-NORTH HALF**  
SCALE: 1"=30'

- LEGEND**
- IRRIGATION CONTROL VALVE
  - ⊗ WATER VALVE
  - ⊠ UTILITY BOX (SIZE VARIES)
  - ⊙ TREE (SIZE VARIES)
  - ⊕ SEWER CLEANOUT
  - ⊖ DRAIN INLET
  - ⊙ UTILITY POLE
  - ⊙ STREET LIGHT
  - ⊙ FIRE HYDRANT
  - STREET CENTERLINE
  - X FENCE
  - FENCE
  - EDGE OF PAVEMENT
  - OHE OVERHEAD ELECTRIC
  - EX W EXISTING WATER LINE
  - S EXISTING SEWER LINE
  - GAS EXISTING GAS LINE

NOTE: TOPOGRAPHIC SURVEY WAS PERFORMED JUNE AND JULY 2015 AND REFLECTS EXISTING CONDITIONS PRIOR TO PHASE 1 OF MODERNIZATION

**PORTER & ASSOCIATES, INC.**  
ENGINEERING & SURVEYING  
1200 21st Street, Bakersfield, California 93301  
661.327.0362 FAX 661.327.1065



P:\PROJECTS\2015\1663\1663 VOORHIES MOD-Site Plan - CD10.plt  
 DATE: 09/25/17  
 DRAWN BY: [Signature]  
 CHECKED BY: [Signature]

**GRADING CONSTRUCTION NOTES (THIS SHEET ONLY)**

- 1 CONSTRUCT 6" CONCRETE CURB PER DETAIL (P-7)
- 2 CONSTRUCT 8" WIDE V-GUTTER W/ 2" DEPRESSION PER DETAIL (P-7)
- 3 CONSTRUCT 4" WIDE V-GUTTER W/ 2" DEPRESSION PER DETAIL (P-7)
- 4 CONSTRUCT 4" THICK CONCRETE OR 0.20" ASPHALT OVER 0.40" AGGREGATE BASE WALK AND/OR FLAT WORK PER ARCHITECT'S PLAN. REFER TO ARCHITECT'S PLAN FOR DIMENSIONS NOT SHOWN.
- 5 CONSTRUCT 2" WIDE V-GUTTER W/ 2" DEPRESSION PER DETAIL (P-7)
- 6 INSTALL NEENAH FOUNDRY R-4999-HX TRENCH DRAIN W/ TYPE 'D' SOLID LID AS UNDER SIDEWALK DRAIN.
- 7 SAWCUT TO NEAT, CLEAN, VERTICAL FACE OR AS DIRECTED BY COUNTY.
- 8 CONSTRUCT STANDARD DRIVE APPROACH TYPE "C" COMMERCIAL PER COUNTY OF KERN DEVELOPMENT STD. PLATE No. R-55.
- 9 CONSTRUCT ACCESSIBLE RAMP PER ARCHITECT'S PLAN.
- 10 EXISTING CONCRETE OR AC PAVING TO REMAIN, PROTECT IN PLACE.
- 11 CONSTRUCT WHEELCHAIR RAMP DETAIL TYPE 'C' DRIVE APPROACH PER COUNTY OF KERN DEVELOPMENT STD. PLATE No. R-59.
- 12 CONSTRUCT A2-6 CURB & GUTTER PER COUNTY OF KERN DEVELOPMENT STD. PLATE No. R-52.
- 13 CONSTRUCT SIDEWALK PER COUNTY OF KERN DEVELOPMENT STD. PLATE No. R-65.
- 14 CONSTRUCT 6" CONCRETE CURB AND GUTTER PER DETAIL (P-7)

- 15 CONSTRUCT 8" CONCRETE CURB PER DETAIL (P-7)
  - 16 CONSTRUCT ACCESSIBLE CURB RAMP PER ARCHITECT'S PLAN.
- NOTES: 1. WARP CONCRETE TO CALIFORNIA PUBLIC ACCESSIBILITY STANDARDS TO MATCH FINISHED FLOOR AT ALL BUILDING ACCESS OPENINGS.  
2. ACCESSIBLE PARKING SHALL NOT EXCEED 2% MAXIMUM SLOPE IN ANY DIRECTION.  
3. SEE ARCHITECT'S PLANS FOR ALL DIMENSIONS NOT SHOWN.

CONTRACTOR SHALL ADJUST ALL EXISTING MANHOLES, CLEANOUTS, JUNCTION BOXES, VALVE COVERS, MONUMENT ENCASUREMENTS, ETC. TO FINISHED GRADE PER COUNTY STANDARDS. CONTRACTOR SHALL COORDINATE RELOCATION OF ALL EXISTING UTILITIES WITH UTILITY OWNER. CONTRACTOR SHALL OBTAIN COUNTY ENCROACHMENT PERMIT FOR ALL WORK WITHIN COUNTY RIGHT-OF-WAY AND EASEMENTS.

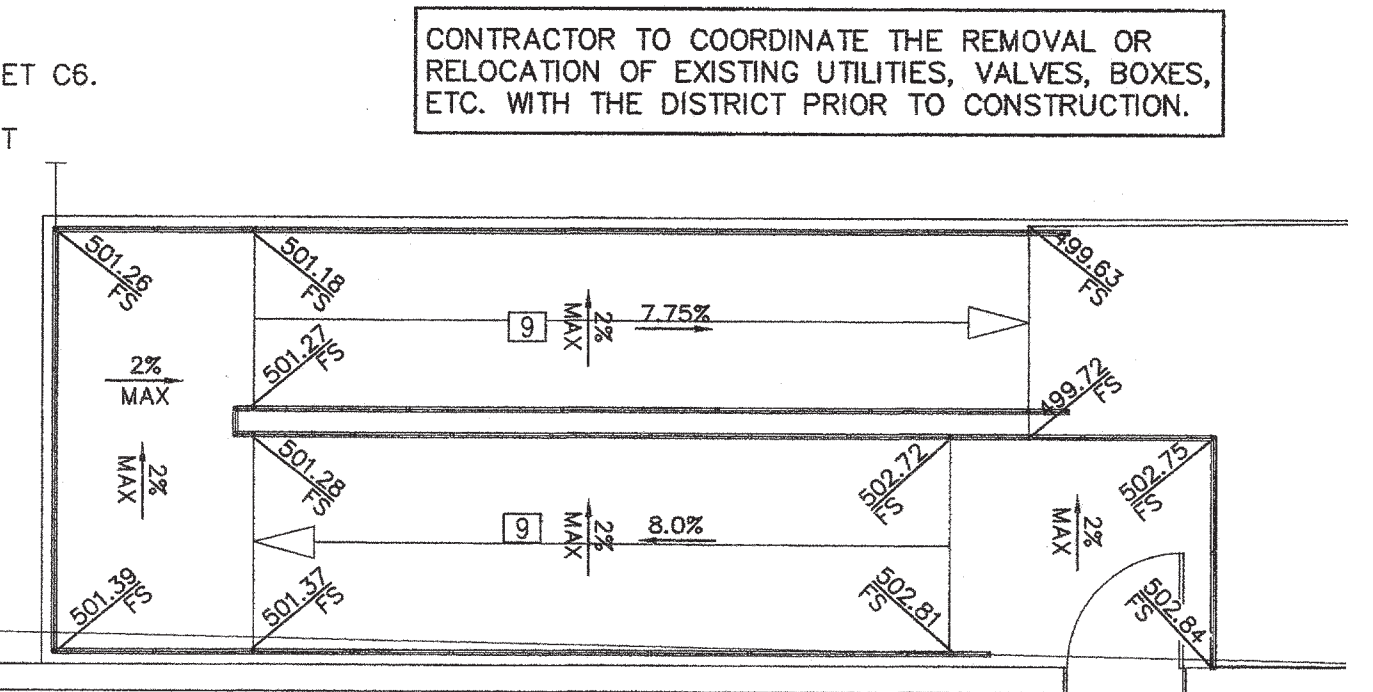
**PAVEMENT CONSTRUCTION NOTES**

- 1 FOR PARKING STALLS, CONSTRUCT 0.20" MIN. ASPHALT CONCRETE OVER 0.40" MIN. CLASS II CRUSHED AGGREGATE BASE OVER 1.00" MIN. NATURAL GROUND COMPACTED TO 95% MAXIMUM DENSITY.
- 2 FOR DRIVE AISLES, CONSTRUCT 0.30" MIN. ASPHALT CONCRETE OVER 0.50" MIN. CLASS II CRUSHED AGGREGATE BASE OVER 1.00" MIN. NATURAL GROUND COMPACTED TO 95% MAXIMUM DENSITY.

NOTE: SEE ARCHITECT'S PLAN FOR PAVING WITHIN SCHOOL SITE.

**STORM DRAIN CONSTRUCTION NOTES**

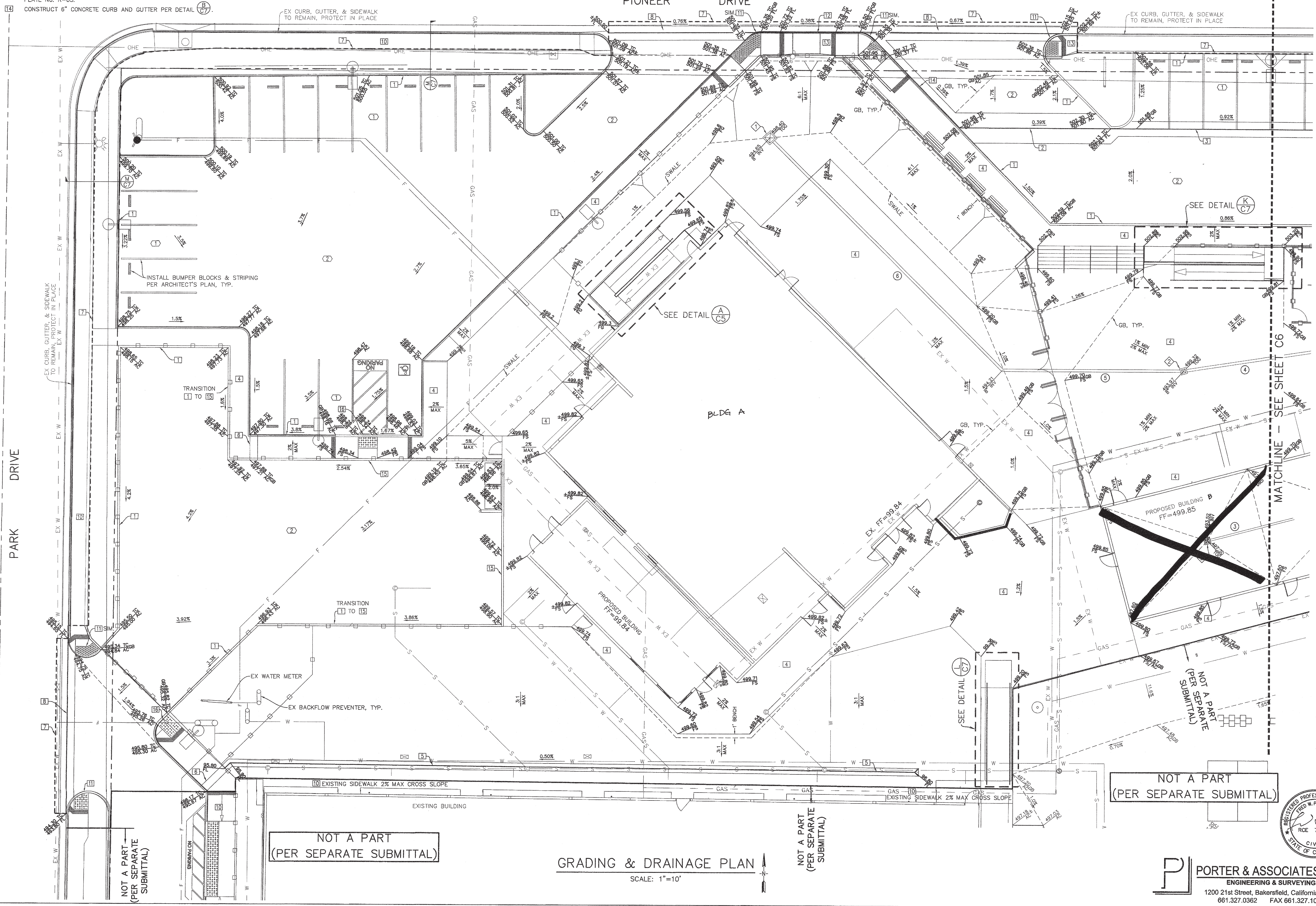
- 1 INSTALL STORM DRAIN PIPE PER TABLE ON SHEET C6.
  - 2 INSTALL CHRISTY U-21 DRAIN BOX WITH U21-NT GRATE PER DETAIL (P-7)
  - 3 INSTALL CHRISTY V-12 DRAIN BOX WITH V12-71W GRATE PER DETAIL (P-7)
- NOTE: 1. LATERAL CONNECTIONS TO MAINS THAT DO NOT OCCUR IN JUNCTION BOXES SHALL BE MADE WITH 45° ELLS OR WYES FOR CLEANOUT PURPOSES.



ACCESSIBLE RAMP 1"=5'

**LEGEND**

- STREET CENTERLINE
- STREET RIGHT-OF-WAY
- DESIGN GRADE
- DESIGN SLOPE
- MATCH EXISTING ELEVATION
- EXISTING WATER VALVE
- EXISTING UTILITY BOX (SIZE VARIES)
- EXISTING SEWER CLEANOUT
- EXISTING SIGN
- EXISTING UTILITY POLE
- EXISTING LIGHT POLE
- EXISTING FIRE HYDRANT
- EXISTING OVERHEAD ELECTRIC
- EXISTING SEWER LINE
- EXISTING WATER LINE
- EXISTING GAS LINE
- PROPOSED STORM DRAIN
- PROPOSED SEWER (PER THIS SUBMITTAL SEE SHEET 10)
- PROPOSED WATER (PER THIS SUBMITTAL SEE SHEET 10)
- PROPOSED SEWER (PER SEPARATE SUBMITTAL)
- PROPOSED WATER (PER SEPARATE SUBMITTAL)
- PROPOSED SEWER CLEANOUT
- PROPOSED STORM DRAIN MANHOLE
- PROPOSED FIRE WATER (SEE SHEET 11)



NOT A PART (PER SEPARATE SUBMITTAL)

NOT A PART (PER SEPARATE SUBMITTAL)

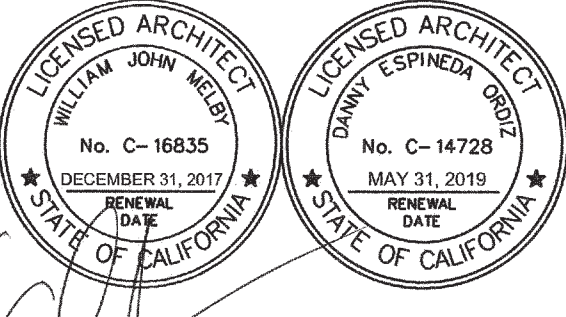
NOT A PART (PER SEPARATE SUBMITTAL)

NOT A PART (PER SEPARATE SUBMITTAL)

GRADING & DRAINAGE PLAN  
SCALE: 1"=10'

**PORTER & ASSOCIATES, INC.**  
ENGINEERING & SURVEYING  
1200 21st Street, Bakersfield, California 93301  
661.327.0362 FAX 661.327.1065

**ORDIZ MELBY ARCHITECTS, INC.**  
5500 MING AVENUE SUITE 280  
BAKERSFIELD, CALIFORNIA 93309  
TELEPHONE (661) 832-6266  
FACSIMILE (661) 832-4291



DANNY E. ORDIZ, AIA  
ARCHITECT C-14728  
WILLIAM J. MELBY, AIA  
ARCHITECT C-18635

IDENTIFICATION STAMP  
DIVISION OF STATE ARCHITECT  
OFFICE OF REGULATION SERVICES  
APPL. 03-117696  
FILE # 15-6  
AC: [initials] FLS: [initials] SS: [initials] COM: [initials]  
DATE: SEP 25 2017  
APN # #APN

MODERNIZATION AT MARSA VOORHIES ELEMENTARY SCHOOL  
6001 PIONEER DRIVE  
BAKERSFIELD, CA 93307  
FOR:  
BAKERSFIELD CITY SCHOOL DISTRICT  
1300 BAKER STREET  
BAKERSFIELD CA 93305

PTN: 63321-186  
KEY PLAN

MARK	DATE	DESCRIPTION
[Symbol]	12-09-15	DSA SUBMITTAL
[Symbol]		
[Symbol]		
[Symbol]		

JOB NUMBER: 2015-1663  
CIC DRAWING FILE: 1663 VOORHIES MOD-Site Plan - 0218.dgn  
DRAWN BY:  
CHECKED BY:  
CHECK AND VERIFY ALL DIMENSIONS BEFORE PROCEEDING WITH THE WORK. REPORT DISCREPANCIES TO THE ARCHITECT.  
THE DRAWINGS, IDEAS, AND DESIGNS REPRESENTED ON THIS SHEET ARE THE PROPERTY OF THE ARCHITECT.  
COPYRIGHT: ORDIZ-MELBY ARCHITECTS, INC. 2014  
SHEET TITLE: GRADING & DRAINAGE - WEST AREA  
SHEET IDENTIFICATION NUMBER: C-5  
SHEET 5 OF 9

**GRADING CONSTRUCTION NOTES (THIS SHEET ONLY)**

- 1) CONSTRUCT 6" CONCRETE CURB PER DETAIL (D) (C7)
- 2) CONSTRUCT 6" CONCRETE CURB AND GUTTER PER DETAIL (H) (C7)
- 3) CONSTRUCT 4" WIDE V-GUTTER W/ 2" DEPRESSION PER DETAIL (I) (C7)
- 4) CONSTRUCT 4" THICK CONCRETE OR 0.20" ASPHALT OVER 0.40" AGGREGATE BASE WALK AND/OR FLAT WORK PER ARCHITECT'S PLAN. REFER TO ARCHITECT'S PLAN FOR DIMENSIONS NOT SHOWN.
- 5) CONSTRUCT 8" WIDE V-GUTTER W/ 2" DEPRESSION PER DETAIL (F) (C7)
- 6) CONSTRUCT RETAINING CURB PER DETAIL (M) (C7)
- 7) CONSTRUCT 8" WIDE V-GUTTER W/ 1" DEPRESSION PER DETAIL (G) (C7)
- 8) SAWCUT TO NEAT, CLEAN, VERTICAL FACE OR AS DIRECTED BY COUNTY.
- 9) CONSTRUCT SIDEWALK PER COUNTY OF KERN DEVELOPMENT STD. PLATE No. R-65.
- 10) CONSTRUCT STANDARD DRIVE APPROACH TYPE "C" COMMERCIAL PER COUNTY OF KERN DEVELOPMENT STD. PLATE No. R-55.
- 11) CONSTRUCT A2-8 CURB & GUTTER PER COUNTY OF KERN DEVELOPMENT STD. PLATE No. R-52.

- 12) EXISTING CONCRETE OR AC PAVING TO REMAIN, PROTECT IN PLACE.
  - 13) CONSTRUCT WHEELCHAIR RAMP DETAIL TYPE "C" DRIVE APPROACH PER COUNTY OF KERN DEVELOPMENT STD. PLATE No. R-59.
- NOTES: 1. WARP CONCRETE TO CALIFORNIA PUBLIC ACCESSIBILITY STANDARDS TO MATCH FINISHED FLOOR AT ALL BUILDING ACCESS OPENINGS.  
 2. ACCESSIBLE PARKING SHALL NOT EXCEED 2% MAXIMUM SLOPE IN ANY DIRECTION.  
 3. SEE ARCHITECT'S PLANS FOR ALL DIMENSIONS NOT SHOWN.
- CONTRACTOR SHALL ADJUST ALL EXISTING MANHOLES, CLEANOUTS, JUNCTION BOXES, VALVE COVERS, MONUMENT ENCASUREMENTS, ETC. TO FINISHED GRADE PER COUNTY STANDARDS. CONTRACTOR SHALL COORDINATE RELOCATION OF ALL EXISTING UTILITIES WITH UTILITY OWNER. CONTRACTOR SHALL OBTAIN COUNTY ENCROACHMENT PERMIT FOR ALL WORK WITHIN COUNTY RIGHT-OF-WAY AND EASEMENTS.

**PAVEMENT CONSTRUCTION NOTES**

- 1) FOR PARKING STALLS, CONSTRUCT 0.20' MIN. ASPHALT CONCRETE OVER 0.40' MIN. CLASS II CRUSHED AGGREGATE BASE OVER 1.00' MIN. NATURAL GROUND COMPACTED TO 95% MAXIMUM DENSITY.
  - 2) FOR DRIVE AISLES, CONSTRUCT 0.30' MIN. ASPHALT CONCRETE OVER 0.50' MIN. CLASS II CRUSHED AGGREGATE BASE OVER 1.00' MIN. NATURAL GROUND COMPACTED TO 95% MAXIMUM DENSITY.
- NOTE: SEE ARCHITECT'S PLAN FOR PAVING WITHIN SCHOOL SITE.

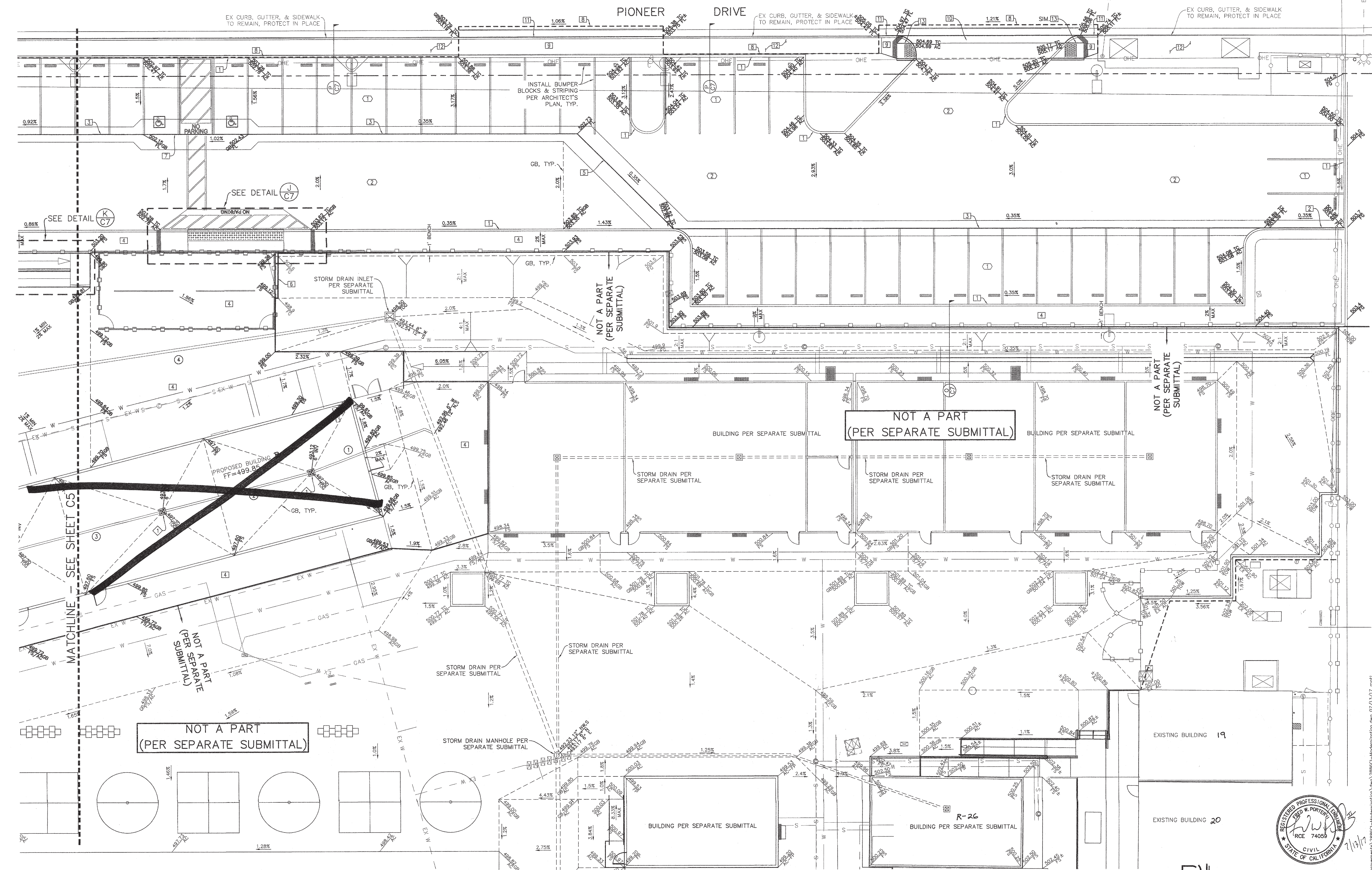
**STORM DRAIN CONSTRUCTION NOTES**

- 1) INSTALL STORM DRAIN PIPE PER TABLE ON SHEET C6.
  - 2) INSTALL CHRISTY V-12 DRAIN BOX WITH V12-71W GRATE PER DETAIL (R) (C7)
- NOTE: 1. LATERAL CONNECTIONS TO MAINS THAT DO NOT OCCUR IN JUNCTION BOXES SHALL BE MADE WITH 45° ELLS OR WYES FOR CLEANOUT PURPOSES.
- CONTRACTOR TO COORDINATE THE REMOVAL OR RELOCATION OF EXISTING UTILITIES, VALVES, BOXES, ETC. WITH THE DISTRICT PRIOR TO CONSTRUCTION.

No.	SLOPE	SIZE	LENGTH	TYPE
1	0.50%	6"	31.6 LF±	PVC
2	0.50%	6"	40.1 LF±	PVC
3	0.50%	6"	40.1 LF±	PVC
4	0.50%	8"	105.7 LF±	PVC
5	0.50%	8"	47.8 LF±	PVC
6	0.50%	8"	86.9 LF±	PVC

**LEGEND**

- STREET CENTERLINE
- STREET RIGHT-OF-WAY
- DESIGN GRADE
- DESIGN SLOPE
- ± MATCH EXISTING ELEVATION
- ⊗ EXISTING WATER VALVE
- ⊕ EXISTING UTILITY BOX (SIZE VARIES)
- ⊙ EXISTING SEWER CLEANOUT
- ⊕ EXISTING SIGN
- ⊕ EXISTING UTILITY POLE
- ⊕ EXISTING LIGHT POLE
- EXISTING FIRE HYDRANT
- EXISTING OVERHEAD ELECTRIC
- EXISTING SEWER LINE
- EXISTING WATER LINE
- EXISTING GAS LINE
- PROPOSED STORM DRAIN
- PROPOSED SEWER (PER THIS SUBMITTAL SEE SHEET 10)
- PROPOSED WATER (PER THIS SUBMITTAL SEE SHEET 10)
- PROPOSED SEWER (PER SEPARATE SUBMITTAL)
- PROPOSED WATER (PER SEPARATE SUBMITTAL)
- ⊙ PROPOSED SEWER CLEANOUT
- ⊙ PROPOSED STORM DRAIN MANHOLE
- PROPOSED FIRE WATER (SEE SHEET 11)



**GRADING & DRAINAGE PLAN**  
SCALE: 1"=10'

**ORDIZ MELBY ARCHITECTS, INC.**

5500 MING AVENUE SUITE 280  
 BAKERSFIELD, CALIFORNIA 93309  
 TELEPHONE (951) 833-6258  
 FACSIMILE (951) 832-4291

LICENSED ARCHITECT  
 STATE OF CALIFORNIA  
 No. C-16835  
 EXPIRES 12/31/2017

LICENSED ARCHITECT  
 STATE OF CALIFORNIA  
 No. C-14728  
 EXPIRES 05/31/2018

DANNY E. ORDIZ, AIA  
 ARCHITECT C-14728

WILLIAM J. MELBY, AIA  
 ARCHITECT C-16835

IDENTIFICATION STAMP  
 DIVISION OF STATE ARCHITECT  
 OFFICE OF REGULATION SERVICES

APPL 03-117596  
 FILE # 15-6

AC FLS SS Cal  
 DATE SEP 25 2017

APN # #APN

**MODERNIZATION AT MARSA VOORHIES ELEMENTARY SCHOOL**  
 6001 PIONEER DRIVE  
 BAKERSFIELD, CA 93307  
 FOR:

**BAKERSFIELD CITY SCHOOL DISTRICT**  
 1300 BAKER STREET  
 BAKERSFIELD CA 93305

PTN: 63321-186  
 KEY PLAN

MARK	DATE	DESCRIPTION
△	12-09-15	DSA SUBMITTAL
△		
△		
△		

JOB NUMBER: 2015-1663  
 CAD DRAWING FILE: 1883 VOORHIES MOD-Site Plan - CD18.pln

DRAWN BY:  
 CHECKED BY:

CHECK AND VERIFY ALL DIMENSIONS BEFORE PROCEEDING WITH THE WORK. REPORT DISCREPANCIES TO THE ARCHITECT.

THE DRAWINGS, IDEAS, AND DESIGNS REPRESENTED ON THIS SHEET ARE THE PROPERTY OF THE ARCHITECT.

COPYRIGHT  
 ORDIZ-MELBY ARCHITECTS, INC. 2014

**PORTER & ASSOCIATES, INC.**  
 ENGINEERING & SURVEYING

1200 21st Street, Bakersfield, California 93301  
 661.327.0362 FAX 661.327.1065

**GRADING & DRAINAGE - EAST AREA**

SHEET IDENTIFICATION NUMBER  
**C-6**  
 SHEET 6 OF 9

DRAWING: C:\Users\117020106001\Documents\2015\1663\1883 VOORHIES MOD-Site Plan - SUBMITTAL 1 CD18.pln  
 PLOT TIME: 8:48 AM  
 PLOT DATE: 9/25/2017



*William J. Melby*  
DANNY E. ORDIZ, AIA  
ARCHITECT C-14728  
WILLIAM J. MELBY, AIA  
ARCHITECT C-16836

IDENTIFICATION STAMP  
DIVISION OF STATE ARCHITECT  
OFFICE OF REGULATION SERVICES

APPL. # APP  
FILE # FILE  
AC: FLS: SS: CAL  
DATE: SEP 25 2017  
APN # #APN

MODERNIZATION AT MARSA  
VOORHIES ELEMENTARY  
SCHOOL  
6001 PIONEER DRIVE  
BAKERSFIELD, CA 93307  
FOR:

BAKERSFIELD CITY  
SCHOOL DISTRICT  
1300 BAKER STREET  
BAKERSFIELD CA 93305

PTN: 63321-186  
KEY PLAN

MARK	DATE	DESCRIPTION
	12-09-15	DSA SUBMITTAL
△		
△		
△		

JOB NUMBER:  
**2015-1663**  
C/D DRAWING FILE

1663 VOORHIES MOD-SHA Plan - CD18.pln

DRAWN BY:

CHECKED BY:

CHECK AND VERIFY ALL DIMENSIONS BEFORE  
PROCEEDING WITH THE WORK.  
REPORT DISCREPANCIES TO THE ARCHITECT.

THE DRAWINGS, IDEAS, AND DESIGNS  
REPRESENTED ON THIS SHEET ARE THE  
PROPERTY OF THE ARCHITECT.

COPYRIGHT  
ORDIZ MELBY ARCHITECTS, INC. 2014

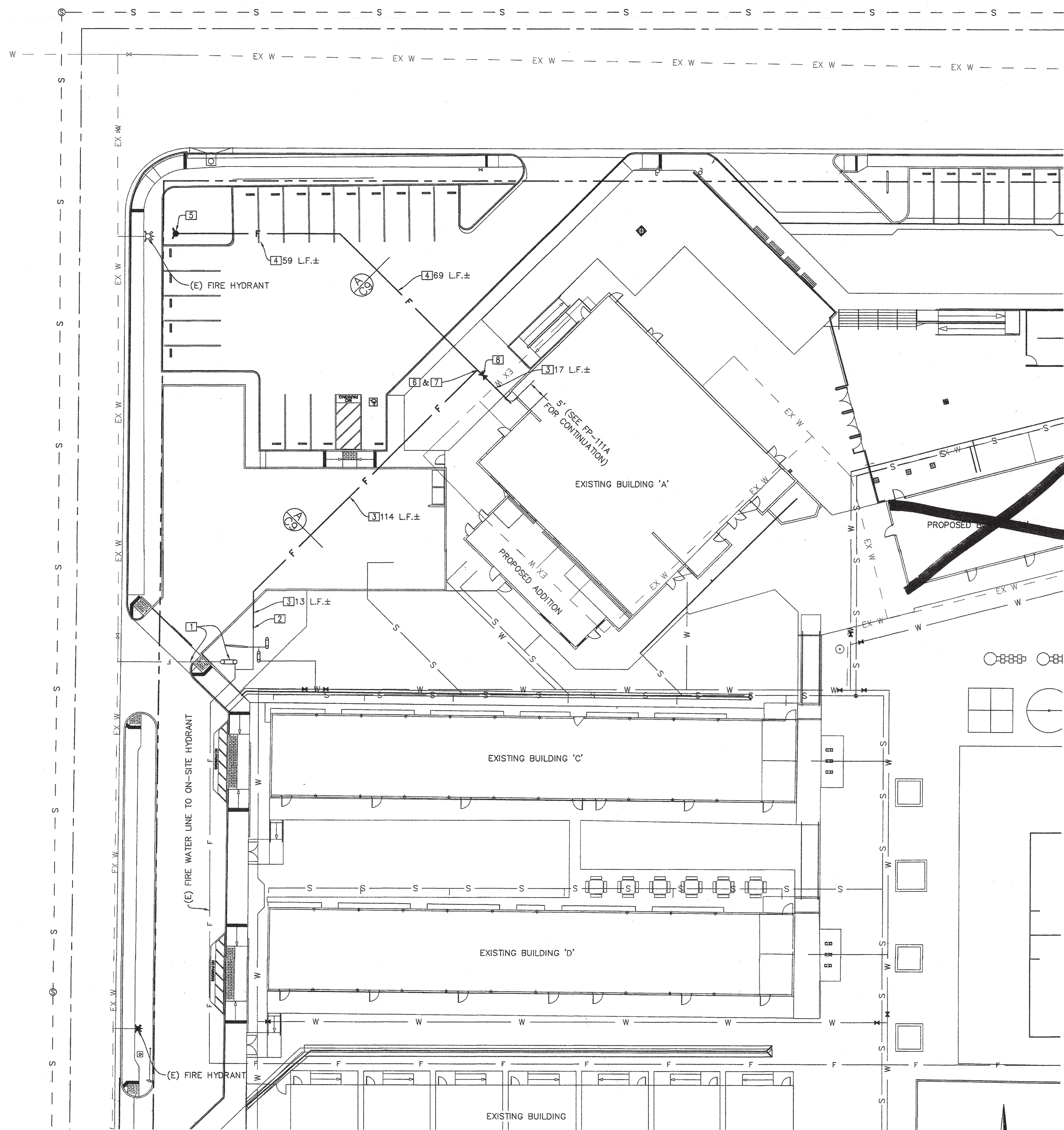
SHEET TITLE

**FIRE WATER PLAN**

SHEET IDENTIFICATION NUMBER

**C-9**

SHEET 9 OF 9



**FIRE WATER CONSTRUCTION NOTES**

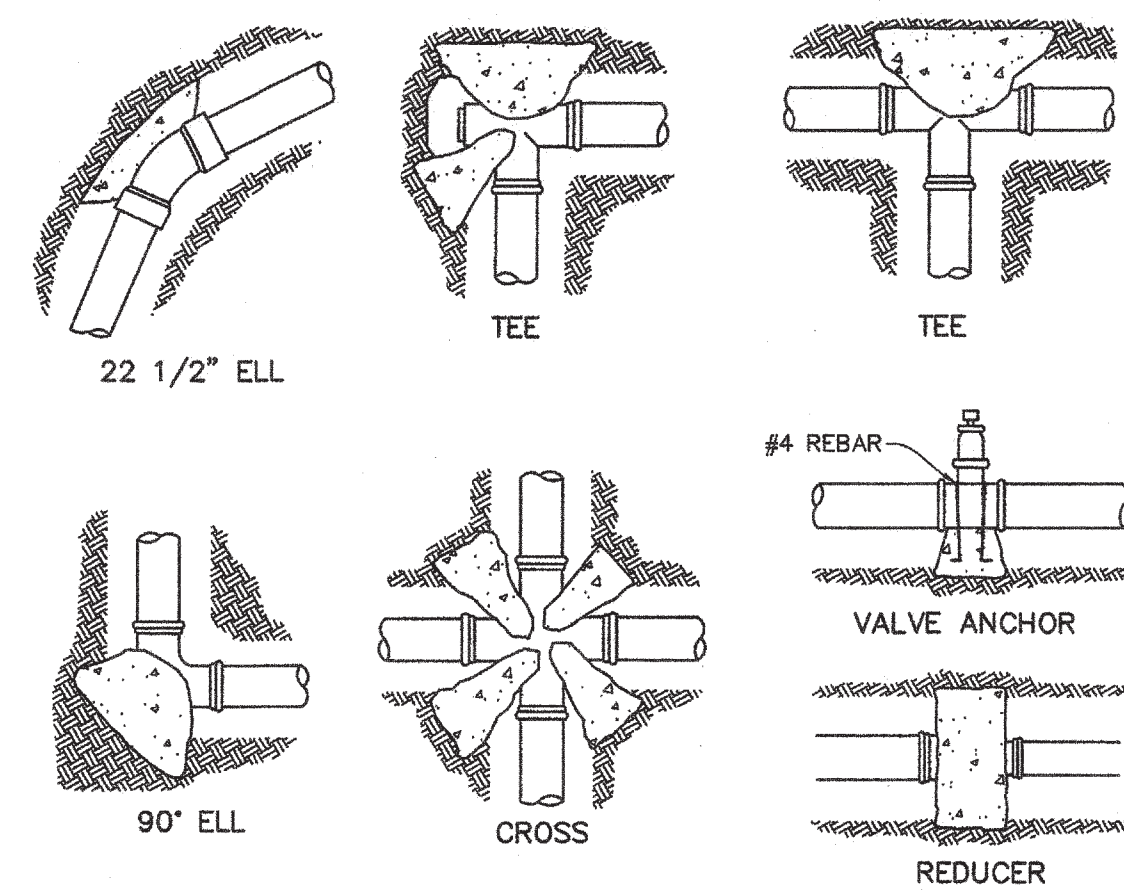
- EXISTING 8" FIRE SERVICE AND DOUBLE DETECTOR CHECK BACKFLOW PREVENTER.
- TIE INTO EXISTING 8" FIRE WATER LINE.
- INSTALL 8" PVC (9000) FIRE WATER LINE TO 5' FROM BUILDING WITH THRUST BLOCKS PER DETAIL B ON THIS SHEET (DISTANCES SHOWN).
- INSTALL 4" PVC (9000) FIRE WATER LINE WITH THRUST BLOCKS PER DETAILS ON THIS SHEET.
- INSTALL FIRE DEPARTMENT CONNECTION PER COUNTY OF KERN FIRE DEPARTMENT STANDARDS. *SEE DETAIL D ON THIS SHEET.*
- INSTALL 8" TEE.
- INSTALL 4"x8" REDUCER.
- INSTALL MUELLER A-20806 ADJUSTABLE VERTICAL INDICATOR POST PER MANUFACTURER'S SPECIFICATIONS WITH THRUST BLOCKS PER DETAIL B ON THIS SHEET. *SEE DETAIL C ON THIS SHEET.*

**NOTES:**

- CONTRACTOR SHALL INSTALL ALL ELBOWS, TEES & APPURTENANCES AS NECESSARY TO FURNISH A COMPLETE PROJECT.
- EXISTING UNDERGROUND UTILITIES HAVE BEEN SHOWN BASED ON AVAILABLE RECORDS PROVIDED BY THE OWNER. CONTRACTOR SHALL VERIFY LOCATION AND DEPTH OF UTILITIES PRIOR TO CONSTRUCTION AND NOTIFY ENGINEER OF ANY DISCREPANCIES.

**LEGEND**

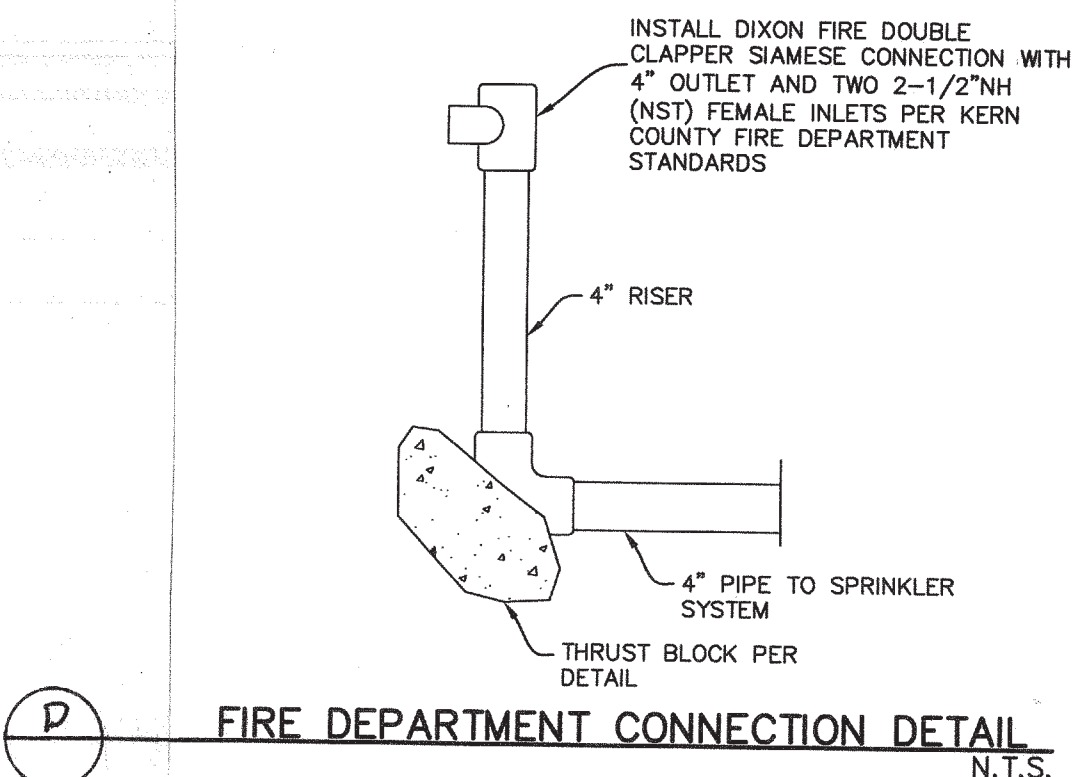
- STREET CENTERLINE
- STREET RIGHT-OF-WAY
- OHE --- EXISTING OVERHEAD ELECTRIC
- S --- EXISTING SEWER LINE
- EX W --- EXISTING WATER LINE
- GAS --- EXISTING GAS LINE
- --- PROPOSED STORM DRAIN
- S --- PROPOSED SEWER
- W --- PROPOSED WATER
- F --- PROPOSED FIRE WATER



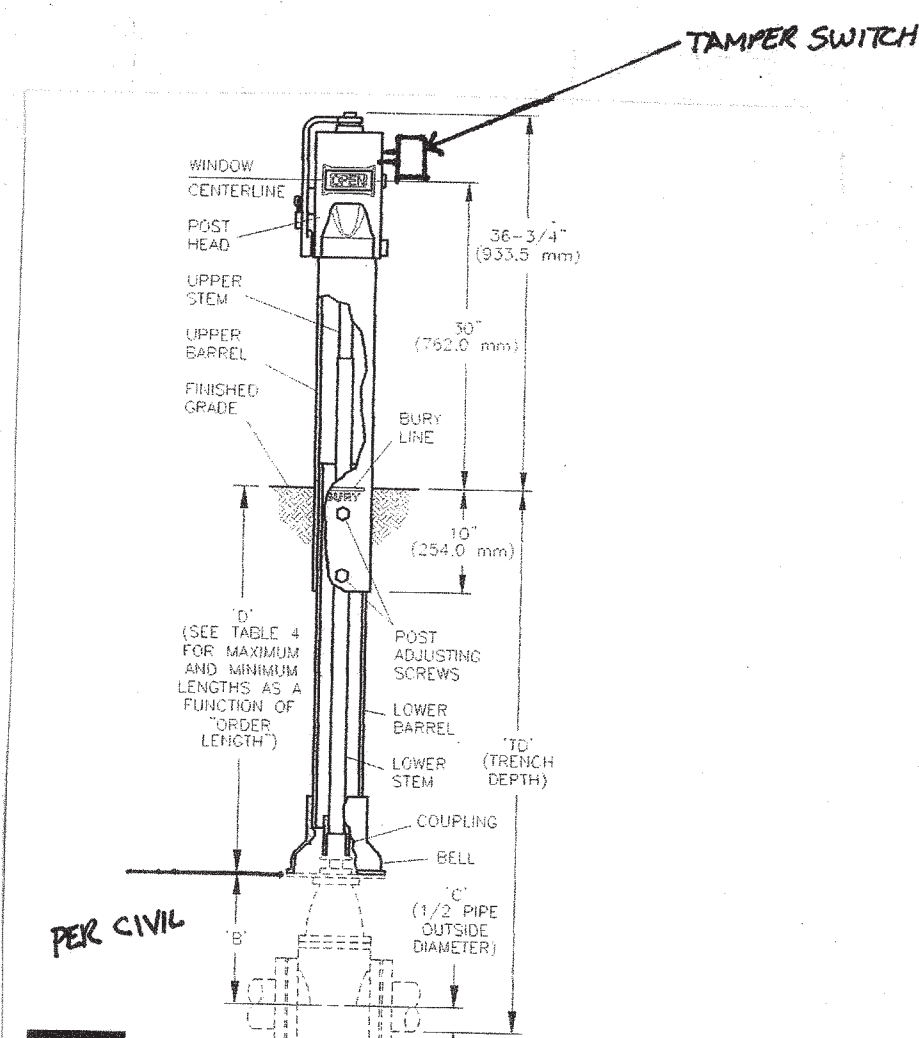
THRUST BLOCK SCHEDULE					
BEARING AREA IN SQUARE FEET					
PIPE SIZE	TEE OR PLUG	90° ELL	45° ELL	22 1/2" ELL	CROSS VALVE
4"	2	2	2	1	—
6"	3	4	2	2	1.5 EA. 3.0
8"	5	7	4	2	3.0 EA. 5.5
10"	8	11	6	3	4.5 EA. 9.0
12"	11	16	8	4	6.5 EA. 13.0
16"	16	23	13	7	9.0 EA. 18.0

**NOTES:**

- ALL VALVES, FITTINGS AND DIRECTIONAL CHANGES ARE TO BE HELD IN PLACE BY CONCRETE THRUST BLOCKS.
- BEARING AREAS INDICATED ARE BASED ON ALLOWABLE SOIL PRESSURE OF 1500 PSF. **WATER PRESSURE 73 PSI**
- CONCRETE IS NOT TO BEAR AGAINST PIPE. THRUST BLOCK TO ONLY BE IN CONTACT WITH FITTING.
- THRUST BLOCKS SHALL BE POURED AGAINST UNDISTURBED SOIL.
- JOINT SHALL BE KEPT CLEAR OF CONCRETE.
- CONCRETE SHALL HAVE A MINIMUM COMPRESSIVE STRENGTH OF 2500 PSI AT 28 DAYS. CONCRETE MIX SHALL NOT BE LEANER ONE PART CEMENT, TWO & ONE-HALF PART SAND, AND FIVE PARTS STONE PER NFPA 13 10.8.2.2.

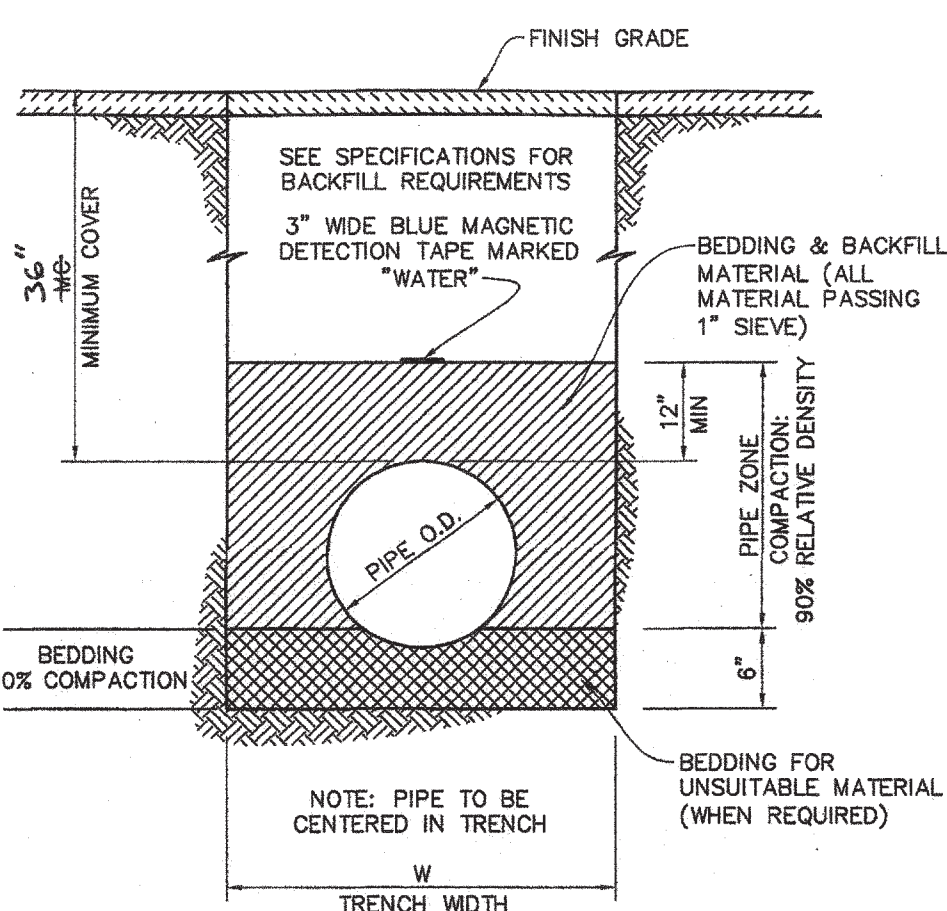


**FIRE DEPARTMENT CONNECTION DETAIL**  
N.T.S.



**Fig. B**  
NOMINAL INSTALLATION DIMENSIONS FOR MODEL  
A-20806/A-20807 INDICATOR POSTS

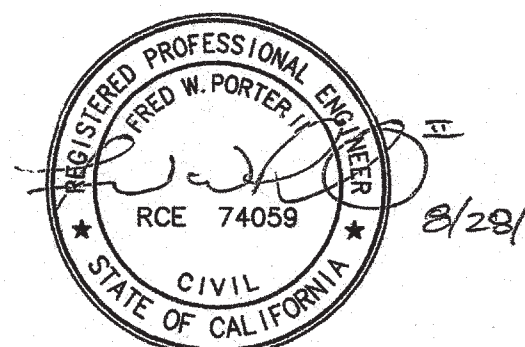
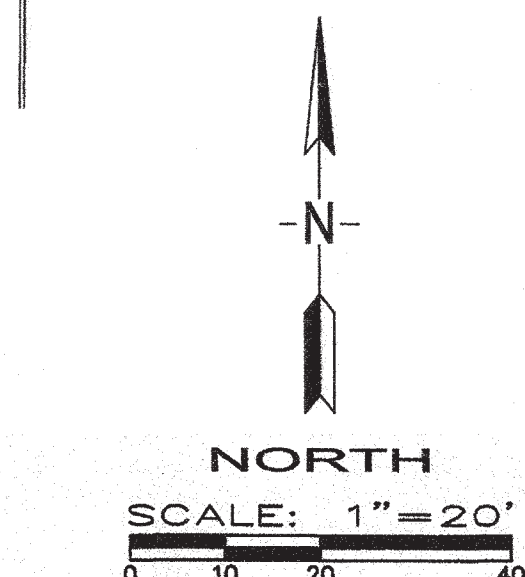
**C**  
POST INDICATOR VALVE  
N.T.S.



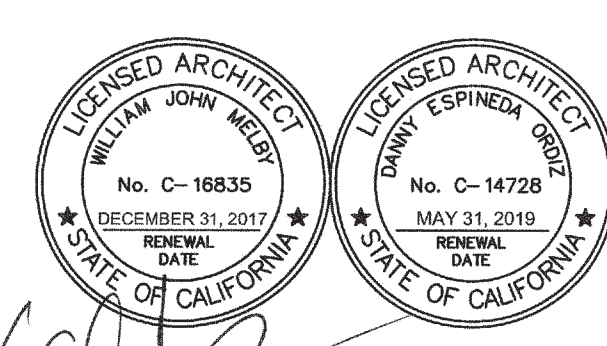
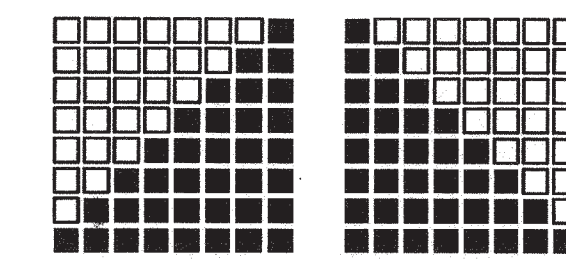
TRENCH DIMENSIONS		
PIPE SIZE	W	MC
4"	22"	30"
6"	24"	30"
8"	30"	30"
10", 12"	36"	36"

**A**  
TYPICAL PVC PIPE TRENCH SECTION  
N.T.S.

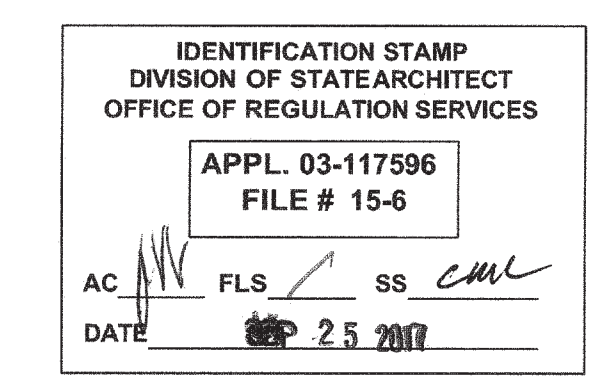
**B**  
TYPICAL THRUST BLOCK DETAILS  
N.T.S.



**PORTER & ASSOCIATES, INC.**  
ENGINEERING & SURVEYING  
1200 21st Street, Bakersfield, California 93301  
861.327.0362 FAX 861.327.1065



DANNY E. ORDIZ, AIA  
ARCHITECT C-14728  
WILLIAM J. MELBY, AIA  
ARCHITECT C-16835



**SITE DEMOLITION LEGEND**

[Pattern]	EXISTING CONCRETE TO BE REMOVED
[Pattern]	EXISTING ASPHALT PAVING TO BE REMOVED
[Pattern]	EXISTING MODULAR CLASSROOMS TO BE REMOVED
[Pattern]	EXISTING BUILDING TO BE REMOVED
[Pattern]	TURF TO BE REMOVED
[Pattern]	PLAY EQUIPMENT AREA TO BE REMOVED

**SITE LEGEND**

[Pattern]	CONCRETE WALK
[Pattern]	TURF
[Pattern]	EXISTING RESTROOMS (NO WORK IN THIS AREA)
[Pattern]	EXISTING CHAIN LINK FENCE
[Pattern]	EXISTING A.C. PAVING
[Pattern]	EXISTING CONCRETE CURB
[Pattern]	EXISTING PORTABLE CLASSROOM TO BE RELOCATED

**SITE DEMOLITION KEYNOTES:**

- 1 REMOVE (E) AC PAVING IN PARKING LOT
- 2 REMOVE (E) CONCRETE CURB
- 3 REMOVE (E) TURFLANDSCAPE. REMOVE (E) IRRIGATION LINES
- 4 REMOVE (E) TUBE STEEL BOLLARDS AND FOOTINGS IN THEIR ENTIRETY
- 5 REMOVE (E) COLD STORAGE BOX IN ITS ENTIRETY. REMOVE ASSOCIATED ELECTRICAL AND/OR PLUMBING LINES.
- 6 REMOVE (E) CONCRETE SLAB AND AC PAVING
- 7 REMOVE AND REPLACE (E) DOUBLE CHECK. SEE CIVIL DRAWINGS
- 8 REMOVE (E) C-TRAIN CONTAINERS
- 9 REMOVE (E) RAISED PLANTERS. REMOVE ASSOCIATED IRRIGATION LINES WITHIN RAISED PLANTER.
- 10 REMOVE (E) CONCRETE WALK, PATCH AND REPAIR (E) CONCRETE THAT CONNECTS TO NEW CONCRETE WALK.
- 11 REMOVE (E) CONCRETE STAIRS AND ASSOCIATED HANDRAILS IN THEIR ENTIRETY
- 12 REMOVE (E) PLAYGROUND EQUIPMENT AND ASSOCIATED FOOTINGS. REMOVE (E) WOOD CHIP MATERIAL. SCHOOL DISTRICT DECISION ON WHETHER TO SALVAGE AND STORE PLAYGROUND EQUIPMENT.
- 13 REMOVE (E) CONCRETE RAMP AND HANDRAILS IN THEIR ENTIRETY
- 14 REMOVE (E) BIKE RACKS, AC PAVING AND CHAIN LINK FENCE
- 15 REMOVE (E) TREE IN ITS ENTIRETY
- 16 REMOVE (E) TREE STUMP IN ITS ENTIRETY
- 17 REMOVE (E) UTILITY BOX COVER WITH A TRAFFIC RATED COVER. SET ELEVATION OF UTILITY BOX FLUSH WITH NEW AC PAVING/DRIVEWAY.
- 18 REMOVE (E) BUILT-UP AC PAVING
- 19 REMOVE (E) HOSE BIB. CAP WATER LINE BELOW NEW BUILDING SLAB.
- 20 REMOVE (E) COVERED WALK, TUBE STEEL POSTS, AND ASSOCIATED POST FOOTINGS.
- 21 REMOVE (E) CHAIN LINK FENCE AND ASSOCIATED POST FOOTINGS
- 22 REMOVE (E) PLAY EQUIPMENT AND "SOFT FALL" SYNTHETIC MATERIAL
- 23 REMOVE (E) STORAGE SHED
- 24 REMOVE (E) FABRIC, SHADE STRUCTURES AND ASSOCIATED FOOTINGS
- 25 (E) PICNIC TABLES TO BE RELOCATED. LOCATION TO BE DETERMINED BY SCHOOL DISTRICT.
- 26 REMOVE (E) CONCRETE LANDING, STAIRS, RAMPS AND PIPE HANDRAILS
- 27 REMOVE (E) CONCRETE BORDER
- 28 REMOVE (E) SAND

**MODERNIZATION AT MARSA VOORHIES ELEMENTARY SCHOOL**  
6001 PIONEER DRIVE  
BAKERSFIELD, CA 93307  
FOR:

**BAKERSFIELD CITY SCHOOL DISTRICT**  
1300 BAKER STREET  
BAKERSFIELD CA 93305

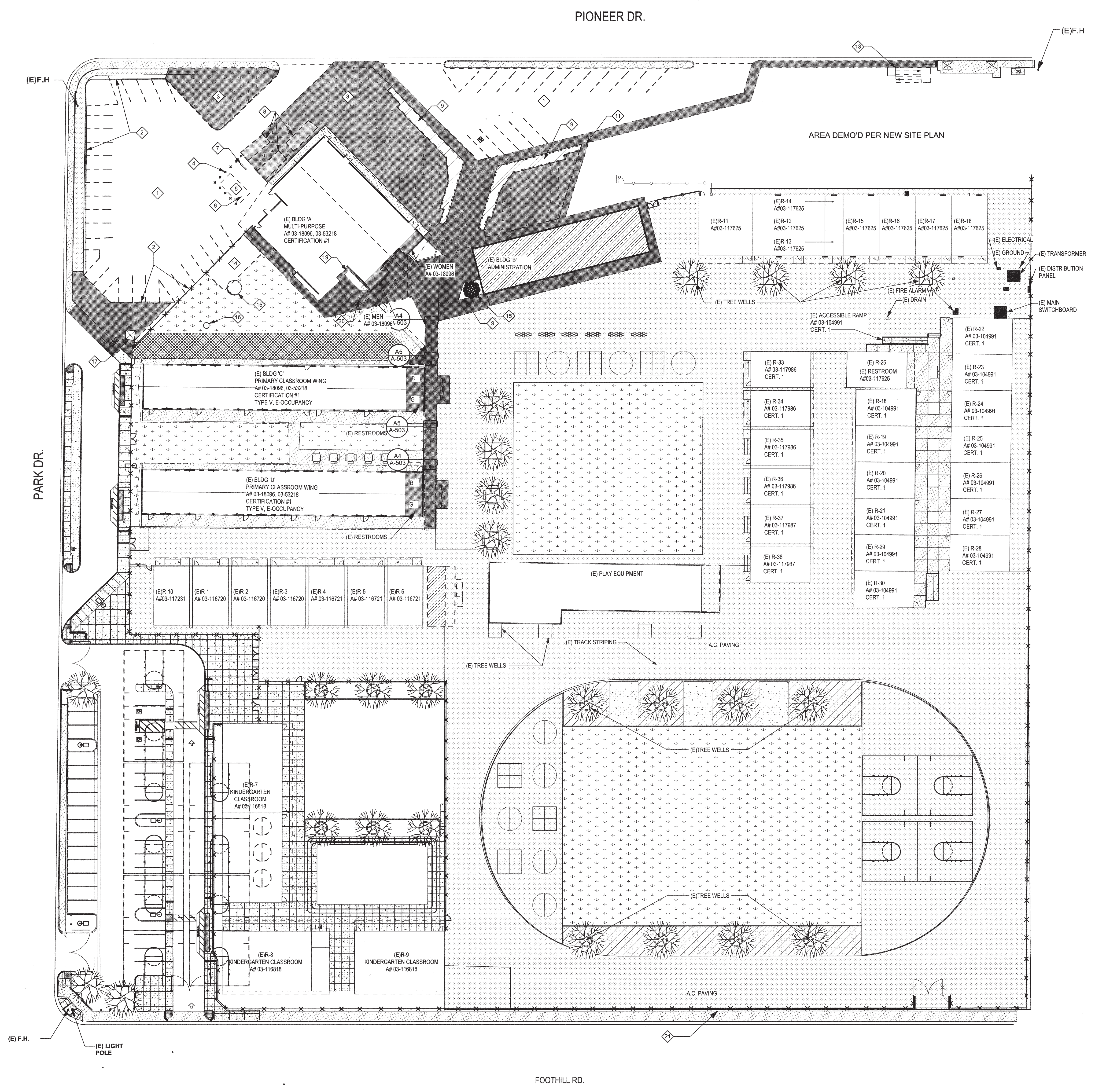
PTN: 63321-186

MARK	DATE	DESCRIPTION
	11/01/16	DSA SUBMITTAL

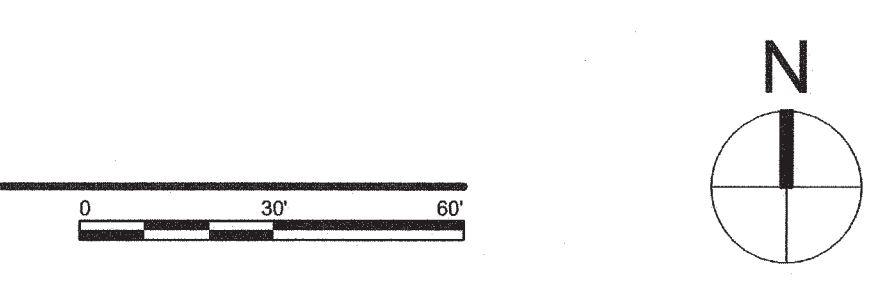
JOB NUMBER:  
**2015-1663**  
CAD DRAWING FILE:  
1683 VOORHIES MOD-Site Plan - CD18.pln  
DRAWN BY:  
CHECKED BY:  
CHECK AND VERIFY ALL DIMENSIONS BEFORE PROCEEDING WITH THE WORK. REPORT DISCREPANCIES TO THE ARCHITECT.  
THE DRAWINGS, IDEAS, AND DESIGNS REPRESENTED ON THIS SHEET ARE THE PROPERTY OF THE ARCHITECT.  
COPYRIGHT  
ORDIZ-MELBY ARCHITECTS, INC. 2014

**SITE PLAN DEMOLITION**

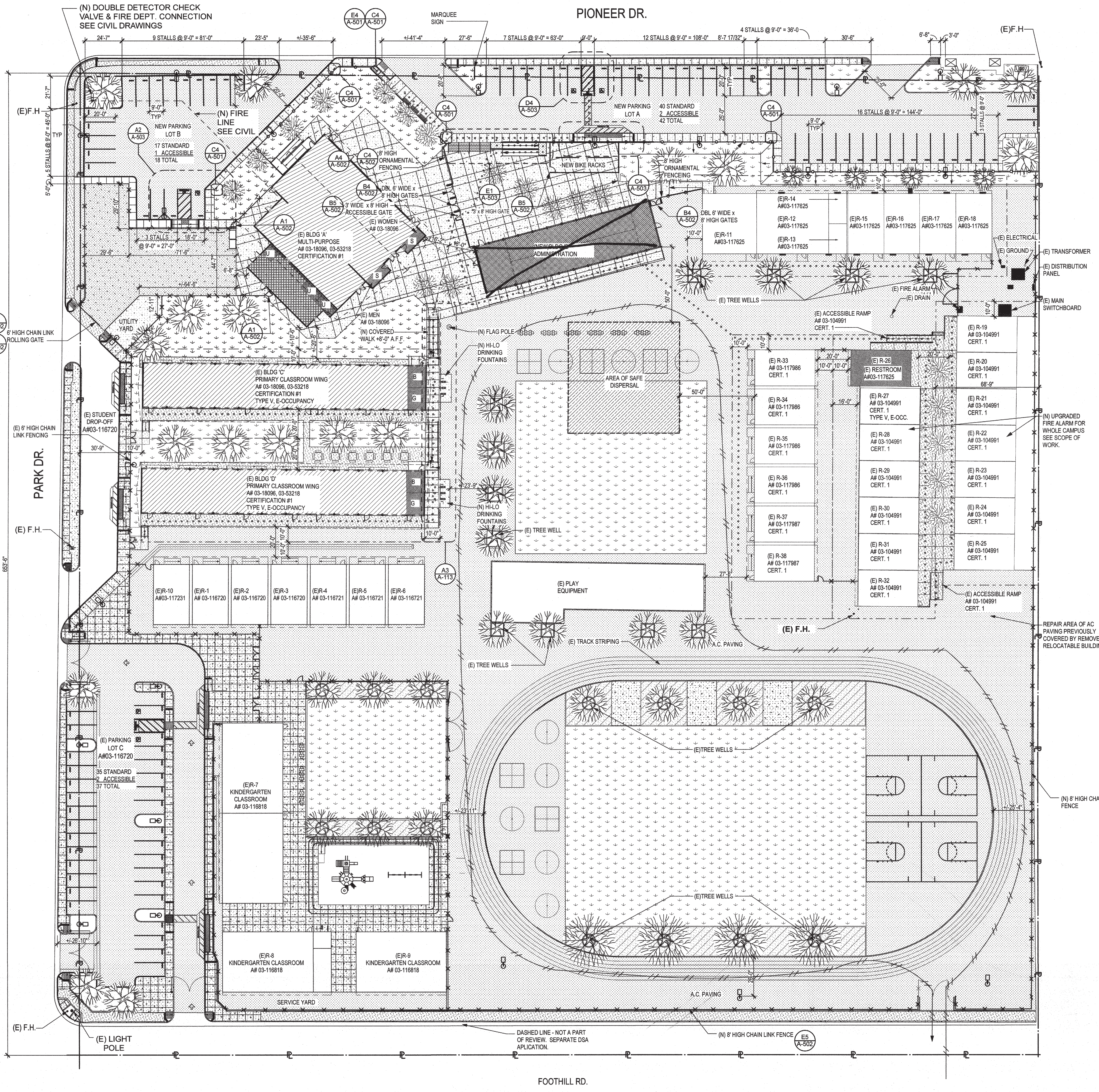
SHEET IDENTIFICATION NUMBER  
**A-110**



**1 SITE PLAN DEMOLITION**  
SCALE: 1" = 30'



P:\PROJECTS\2015\1720210\1683Voorhies\MOD-Site Plan - CD18.pln  
 PLOT DATE: 7/20/17



**1 SITE PLAN**  
SCALE: 1" = 30'

**SAFE DISPERSAL CALCULATION**

SAFE DISPERSAL AREA CALCULATION PER CBC 1027.5  
 RELOCATABLE CLASSROOMS @  
 VOORHIES ELEMENTARY SCHOOL  
 CURRENT OCCUPANCY = 1084 STUDENTS & 86 STAFF  
 TOTAL CAMPUS OCCUPANT LOAD = 1,170  
 AREA OF SAFE DISPERSAL REQUIRED FOR GROUP E BUILDINGS, THE AREA  
 OF SAFE DISPERSAL SHALL BE LOCATED ON THE SAME LOT  
 AT LEAST 50'-0" AWAY FROM ANY BUILDING.  
 1,074 (OCCUPANCY) X 5 (S.F./OCCUPANCY) = 5,370 SQUARE FEET REQUIRED.  
 74 X 74 = 5,476 SQUARE FEET PROVIDED

**SITE LEGEND**

TYPE	DESCRIPTION
[Symbol]	EXISTING CONCRETE WALK
[Symbol]	TURF
[Symbol]	(E) ACCESSIBLE RESTROOMS
[Symbol]	(E) RELOCATABLE CLASSROOM BUILDINGS
[Symbol]	BUILDINGS TO BE MODERNIZED
[Symbol]	DECOMPOSED GRANITE - REFER TO LANDSCAPE DRAWINGS
[Symbol]	NEW ADDITION
[Symbol]	NEW PERMANENT MODULAR BUILDINGS

**DESIGN PROFESSIONAL IN GENERAL RESPONSE CHARGE STATEMENT:** THE POT IDENTIFIED IN THESE CONSTRUCTION DOCUMENTS IS COMPLIANT WITH THE CURRENT APPLICABLE CALIFORNIA BUILDING CODE ACCESSIBILITY PROVISIONS FOR PATH OF TRAVEL REQUIREMENTS FOR ALTERATIONS, ADDITIONS AND STRUCTURAL REPAIRS, AS PART OF THE DESIGN OF THIS PROJECT, THE POT WAS EXAMINED AND ANY ELEMENTS, COMPONENTS OR PORTIONS OF THE POT THAT WERE DETERMINED TO BE COMPLIANT HAVE BEEN IDENTIFIED AND 2) THE CORRECTIVE WORK NECESSARY TO BRING THEM INTO COMPLIANCE HAS BEEN INCLUDED WITHIN THE SCOPE OF THIS PROJECT'S WORK THROUGH DETAILS, DRAWING AND SPECIFICATIONS INCORPORATED INTO THESE CONSTRUCTION DOCUMENTS. ANY NONCOMPLIANT ELEMENTS, COMPONENTS OR PORTIONS OF THE POT THAT WILL NOT BE CORRECTED BY THIS PROJECT BASED ON VALUATION THRESHOLD LIMITATIONS OR A FINDING OF UNREASONABLE HARDSHIP ARE SO INDICATED IN THESE CONSTRUCTION DOCUMENTS.

**DURING CONSTRUCTION:** IF POT ITEMS WITHIN THE SCOPE OF THE PROJECT REPRESENTED AS CODE COMPLIANT ARE FOUND TO BE NONCOMPLYING BEYOND REASONABLE CONSTRUCTION TOLERANCES, THEY SHALL BE BROUGHT INTO COMPLIANCE WITH THE CBC AS A PART OF THIS PROJECT BY MEANS OF A CONSTRUCTION CHANGE DOCUMENT.

[Symbol]	NEW CHAINLINK FENCE
[Symbol]	NEW ORNAMENTAL FENCE
[Symbol]	NEW 4" HIGH ORNAMENTAL FENCE
[Symbol]	EMERGENCY VEHICLE ACCESS - 20'-0" MINIMUM
[Symbol]	PROPERTY LINE
[Symbol]	ASSUMED PROPERTY LINE
[Symbol]	AREA OF SAFE DISPERSAL
<b>ADF</b>	ACCESSIBLE DRINKING FOUNTAINS
<b>B</b>	STUDENT BOYS RESTROOM
<b>G</b>	STUDENT GIRLS RESTROOM
<b>M</b>	STAFF MENS RESTROOM
<b>W</b>	STAFF WOMENS RESTROOM
<b>U</b>	UNISEX RESTROOM
<b>F.H.</b>	FIRE HYDRANT

**PARKING ANALYSIS**

LOT 'A'	LOT 'B'
40 STANDARD STALLS	17 STANDARD STALLS
2 ACCESSIBLE (2 REQ'D)	1 ACCESSIBLE (1 REQ'D)
42 TOTAL STALLS	18 TOTAL STALLS
LOT 'C'	
35 STANDARD STALLS	LOT A 42
2 ACCESSIBLE (2 REQ'D)	LOT B 18
37 TOTAL STALLS	LOT C 37
	TOTAL 97

**DSA 810 LOCAL FIRE AUTHORITY REVIEW**

To facilitate the Division of the State Architect's (DSA) approval of the Fire/Life Safety portion of a project, DSA requires Local Fire Authority (LFA) review of certain elements as specified in this form. Use of this form is mandatory for projects that seek square footage for a variance or if any item on this form is relevant to the project. For additional information, see DSA 810 Instructions and DSA Form 810-1.

**PROJECT INFORMATION**  
 School District/Owner: BAKERSFIELD CITY SCHOOL DISTRICT  
 Project Name/School: MARSIA VOORHIES ELEMENTARY SCHOOL  
 Project Address: 6001 PIONEER DRIVE, BAKERSFIELD, CA 93307

**Local Fire Authority (LFA) Information**  
 LFA Agency Name: Kern Co. Fire Dept.  
 LFA Reviewer Name: Jim Kilian Title: EFS-2  
 Email: Telephone Number: 661-391-7000  
 I have reviewed and responded to the applicable items for this project as listed below.  
 Note: Only sign this form when it is required by the site plan. A loose form is not acceptable to DSA.  
 LFA Reviewer's Signature: Jim Kilian Date: 8/18/17

**Review Key:** "Y" = Complies with LFA requirements "N" = Not approved (complete Section 8)  
 "NA" = Not applicable to this project "NR" = LFA elects not to review

Item	Description	Y	N	NA	NR
1	Where an elevator does not meet medical emergency service call size, per the California Building Code (CBC), use of stairways for emergency rescue and patient transport is acceptable.				
2	Access roads, fire lane markings, barriers and gate entrances are in accordance with Title 19, California Code of Regulations and the California Fire Code, Chapter 9.				
3	Fire hydrant location and distribution complies with the California Fire Code (or see #4).				
4	Fire hydrant location and distribution complies with NFPA 1142, "Alternate Means." If "NR" is checked, DSA can only approve on-site water storage as an alternate. The signature of the school district official is required to acknowledge the use of alternate means.				
5	Signature of School District Official: _____ Date: _____				
6	The location(s) of the proposed post indicator valve and fire department connection meet the requirements of this jurisdiction.				
7	The location(s) of the detector check valve assembly meet the requirements of this jurisdiction.				
8	Is the project located in a hazard severity zone area? (CBC, Chapter 7A, Section 707A.) Check type if "Yes": <input type="checkbox"/> Moderate <input type="checkbox"/> High <input type="checkbox"/> Very High <input type="checkbox"/> WFA (If one of these boxes is checked, the project design must meet the requirements of Chapter 7A.)				
9	COMMENTS (note deficiencies):				



5500 MING AVENUE SUITE 280  
 BAKERSFIELD, CALIFORNIA 93309  
 TELEPHONE (661) 832-5258  
 FACSIMILE (661) 832-4291



DANNY E. ORDIZ, AIA  
 ARCHITECT C-14728  
 WILLIAM J. MELBY, AIA  
 ARCHITECT C-16835

**IDENTIFICATION STAMP**  
 DIVISION OF STATE ARCHITECT  
 OFFICE OF REGULATION SERVICES  
 APPL. 03-117596  
 FILE # 15-6  
 AC FLS SS CM  
 DATE SEP 25 2017

**MODERNIZATION AT MARSIA VOORHIES ELEMENTARY SCHOOL**  
 6001 PIONEER DRIVE  
 BAKERSFIELD, CA 93307  
 FOR:

**BAKERSFIELD CITY SCHOOL DISTRICT**  
 1300 BAKER STREET  
 BAKERSFIELD CA 93305

PTN: 63321-186

MARK	DATE	DESCRIPTION
	11/01/16	DSA SUBMITTAL

JOB NUMBER:  
**2015-1663**  
 CAD DRAWING FILE:  
 1663 VOORHIES MOD-Site Plan - CD18.plt

DRAWN BY:  
 CHECKED BY:  
 CHECK AND VERIFY ALL DIMENSIONS BEFORE PROCEEDING WITH THE WORK. REPORT DISCREPANCIES TO THE ARCHITECT.

THE DRAWINGS, IDEAS AND DESIGNS REPRESENTED ON THIS SHEET ARE THE PROPERTY OF THE ARCHITECT.

COPYRIGHT:  
 ORDIZ-MELBY ARCHITECTS, INC. 2014  
 SHEET TITLE  
**SITE PLAN**

SHEET IDENTIFICATION NUMBER  
**A-111**