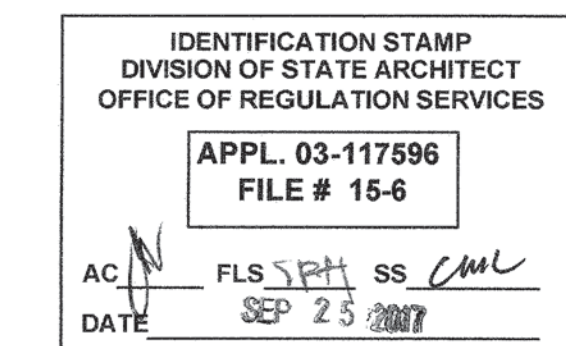
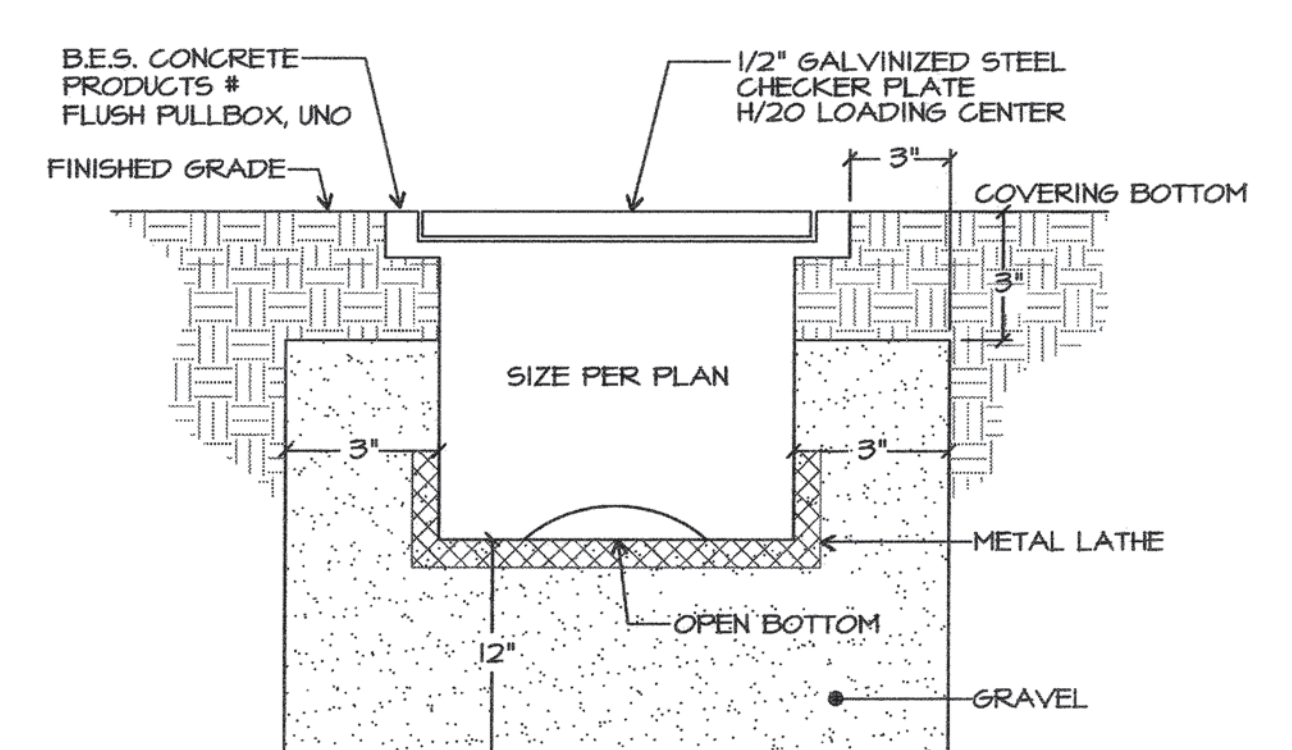
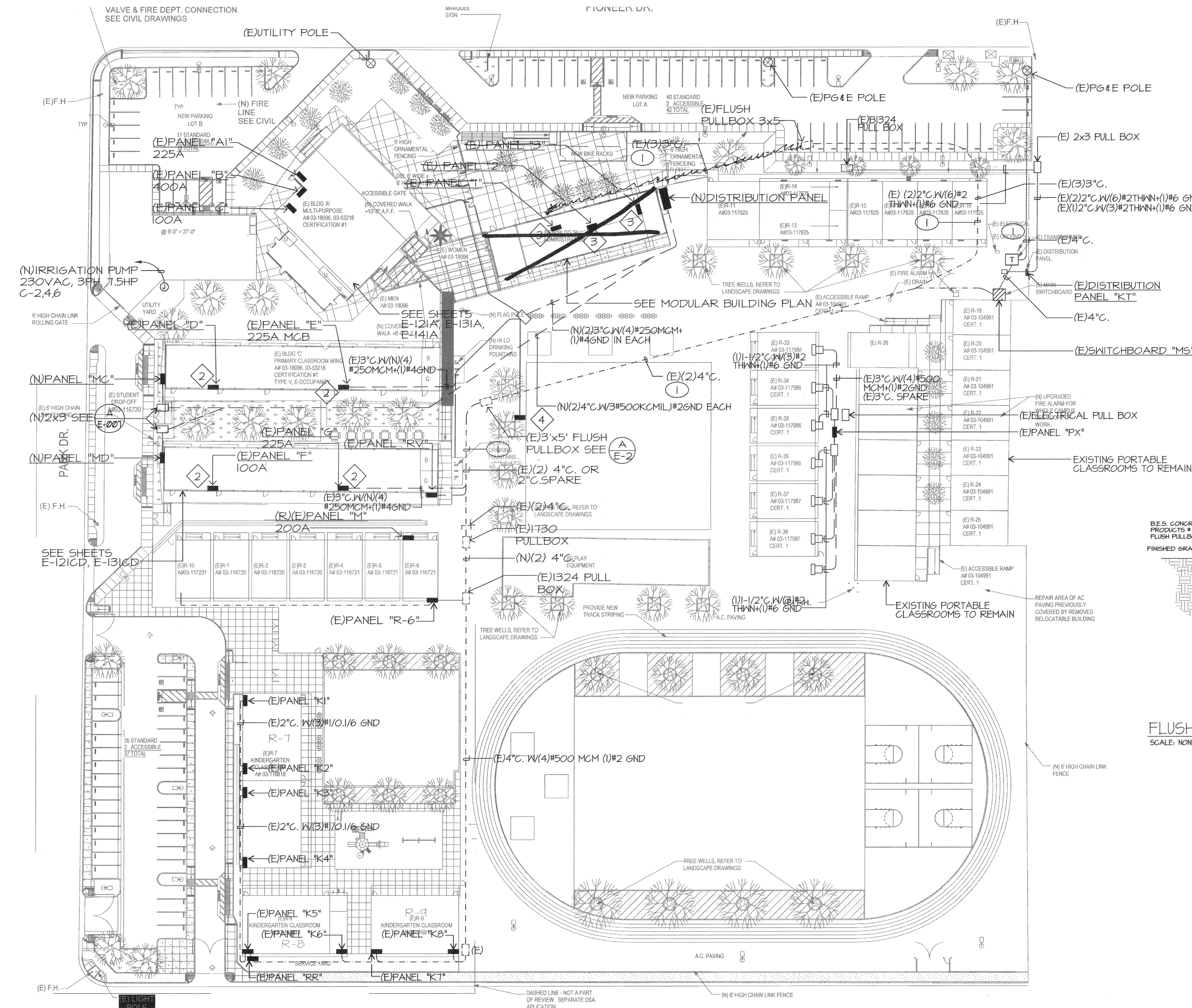


DANNY E. ORDIZ, AIA  
ARCHITECT C-14,728  
WILLIAM J. MELBY, AIA  
ARCHITECT C-16,835



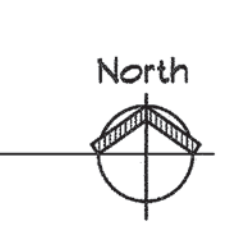
**OVERALL ELECTRICAL SITE PLAN NOTES**

- 1 SPlice (E) CONDUCTORS TO (N) CONDUCTORS FEEDING DISTRIBUTION PANEL "M" USE APPROVED WEATHERPROOF CONNECTIONS.
- 2 (R)(E) PANEL COMPLETELY PRESERVE FEEDER & CONDUITS. VERIFY GROUND CONTINUITY ON FEEDER CONDUIT. GROUND BUSHINGS REQUIRED. REPLACE WITH SQUARE D. NQOD PANELBOARD SEE PANEL SCHEDULE FOR (N) CIRCUITS & SIZING.
- 3 PANEL FURNISHED WITH MODULAR BUILDING. SEE MODULAR DRAWINGS FOR BUILDING INTERIOR POWER & DATA.
- 4 (R)(E) 600A TEMPORARY CHALLENGER NEMA 3R DISTRIBUTION BOARD COMPLETELY.



**FLUSH PULLBOX DETAIL**  
SCALE: NONE

**OVERALL ELECTRICAL SITE PLAN**  
SCALE: 1"=30'-0"

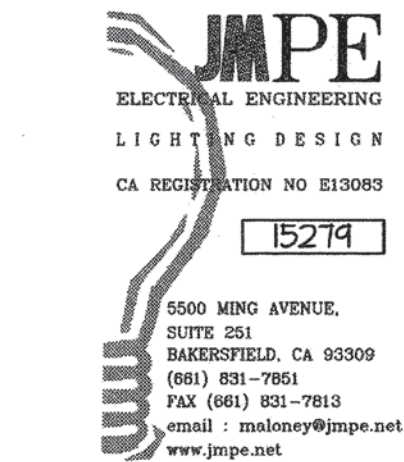


**MODERNIZATION AT MARSA VOORHIES ELEMENTARY SCHOOL FOR: BAKERSFIELD CITY SCHOOL DISTRICT**

1300 BAKER STREET  
BAKERSFIELD CA 93305

MARK	DATE	DESCRIPTION
	11/01/16	DSA SUBMITTAL

2015-1663  
CAD DRAWING FILE:  
1663 VOORHIES MOD-300 & 400 Classroom Wings-CD18.plt  
DRAWN BY: AC  
CHECKED BY: JM  
CHECK AND VERIFY ALL DIMENSIONS BEFORE PROCEEDING WITH THE WORK. REPORT DISCREPANCIES TO THE ARCHITECT.  
THE DRAWINGS, IDEAS, AND DESIGNS REPRESENTED ON THIS SHEET ARE THE PROPERTY OF THE ARCHITECT.  
COPYRIGHT  
ORDIZ-MELBY ARCHITECTS, INC. 2014  
SHEET TITLE



**OVERALL ELECTRICAL SITE PLAN**  
SHEET IDENTIFICATION NUMBER  
**E-007**  
SHEET OF