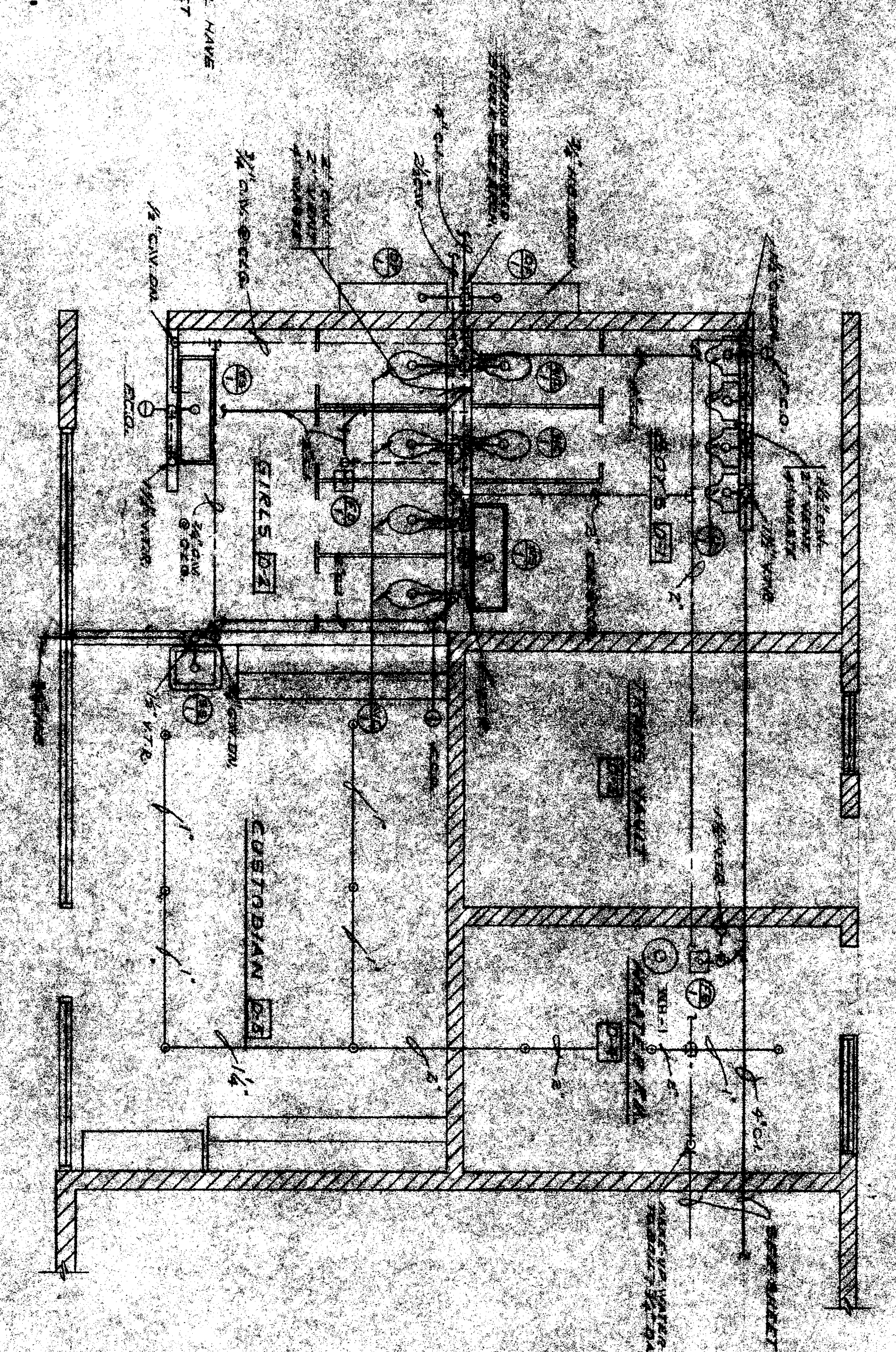
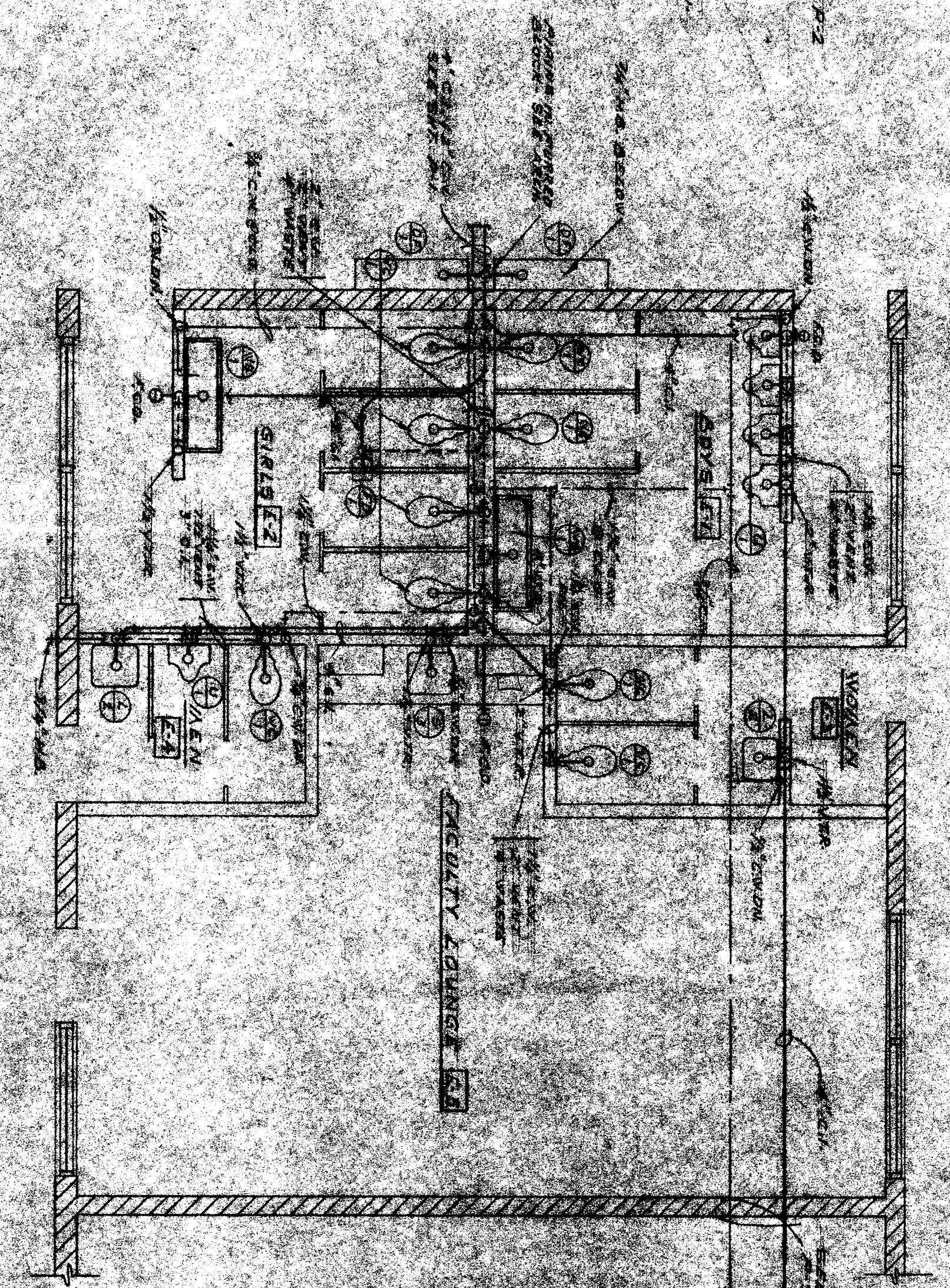


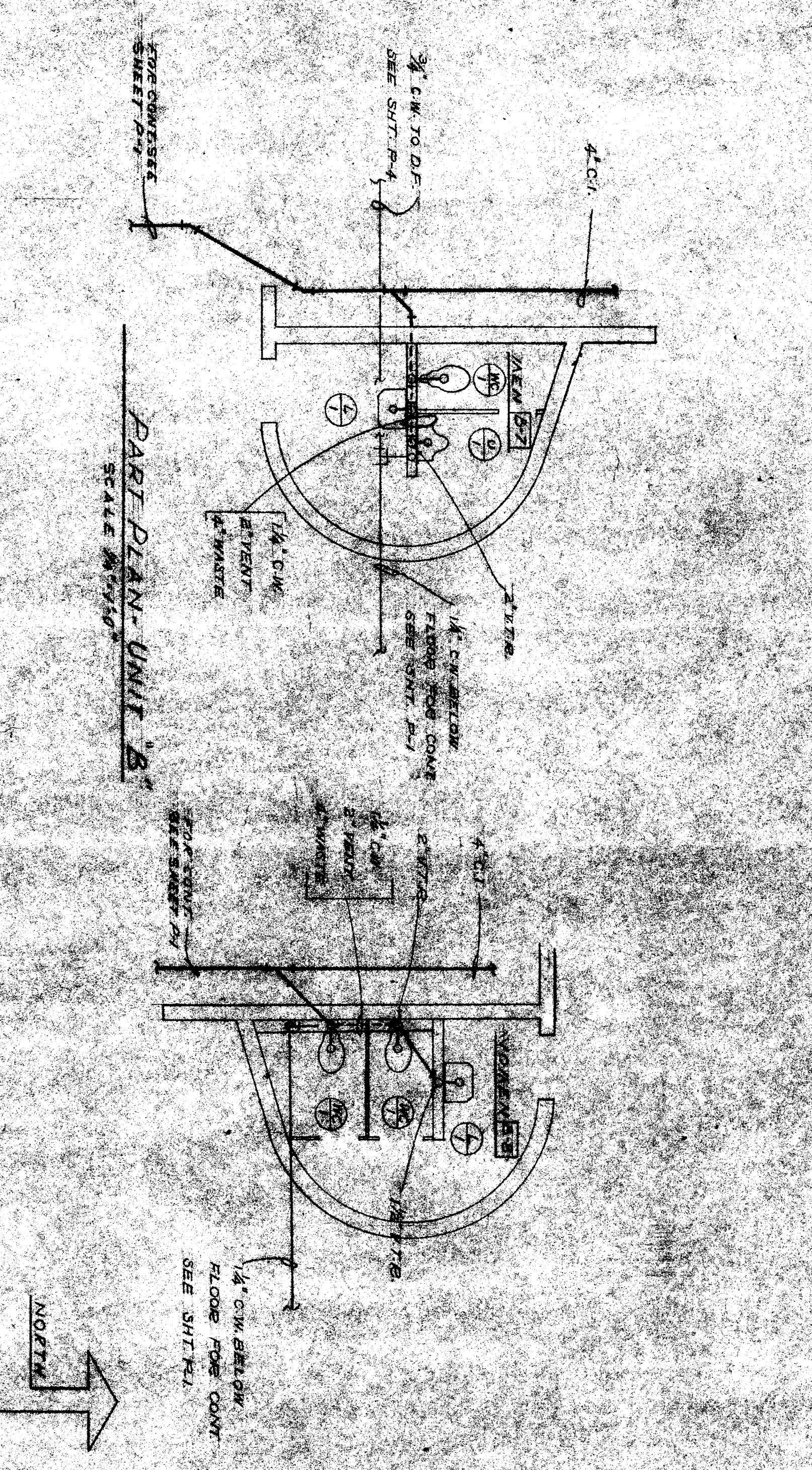
PART PLAN UNIT C
SCALE 1/8" = 1'-0"



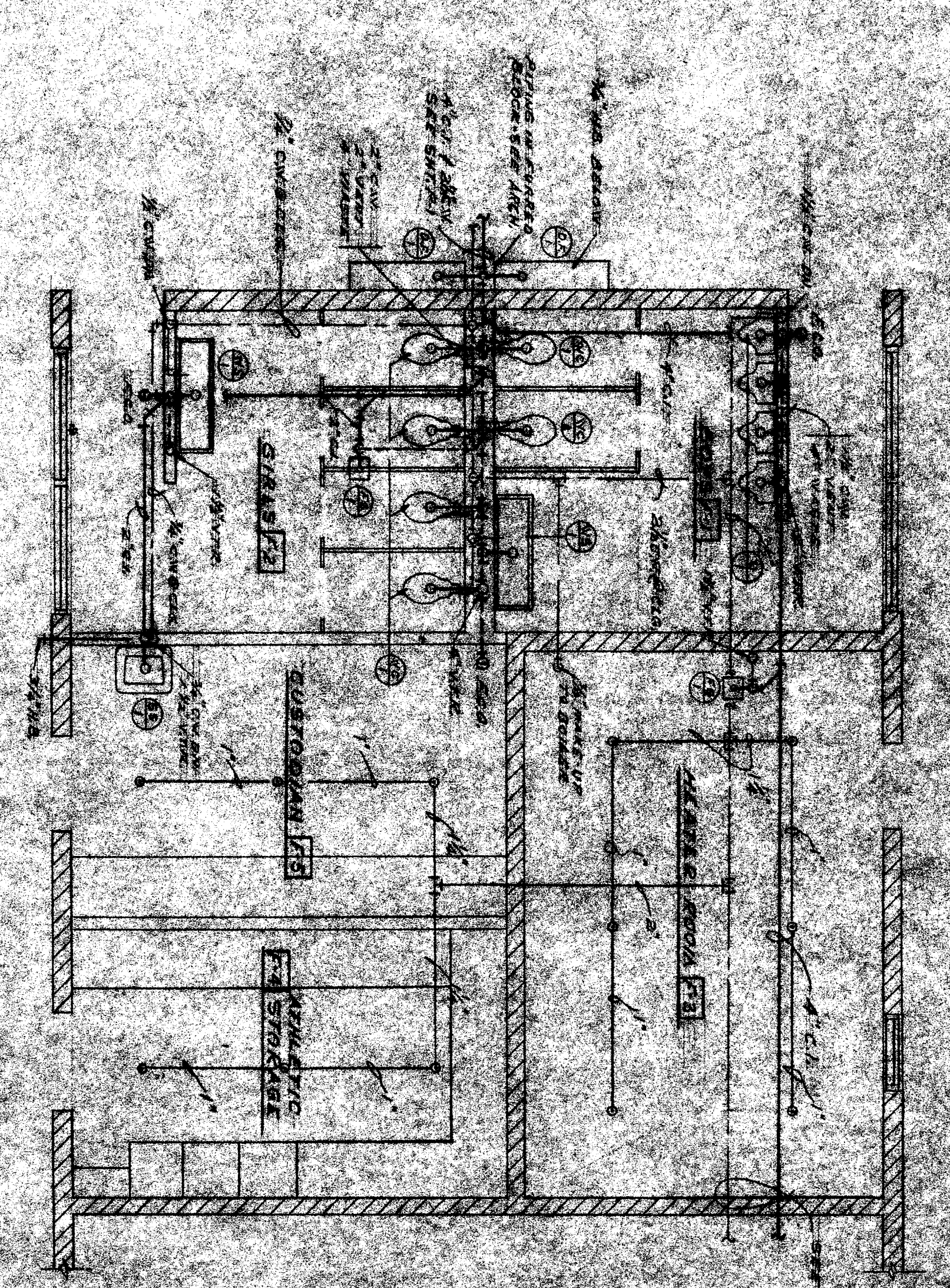
PART PLAN UNIT D
SCALE 1/8" = 1'-0"



PART PLAN UNIT E
SCALE 1/8" = 1'-0"



PART PLAN UNIT B
SCALE 1/8" = 1'-0"



PART PLAN UNIT F
SCALE 1/8" = 1'-0"

OFFICE OF SUPERINTENDENT OF SCHOOLS APPROVED DATE		STATE OF CALIFORNIA DEPARTMENT OF PUBLIC WORKS DIVISION OF ARCHITECTURE		SHEET NO. 20571 DATE DEC. 19, 1930		PROJECT NO. 20571 SCHOOL DISTRICT		SECTION 15 SCHOOL ASSEMBLY ST. & KENNEDY AVE. PASADENA, CALIFORNIA		DESIGNED BY MINIST. L. MCCOY A. I. A. ARCHITECT		DATE	
CHIEF ENGINEER		ARCHITECT		DATE		SECTION		DATE		DATE		DATE	