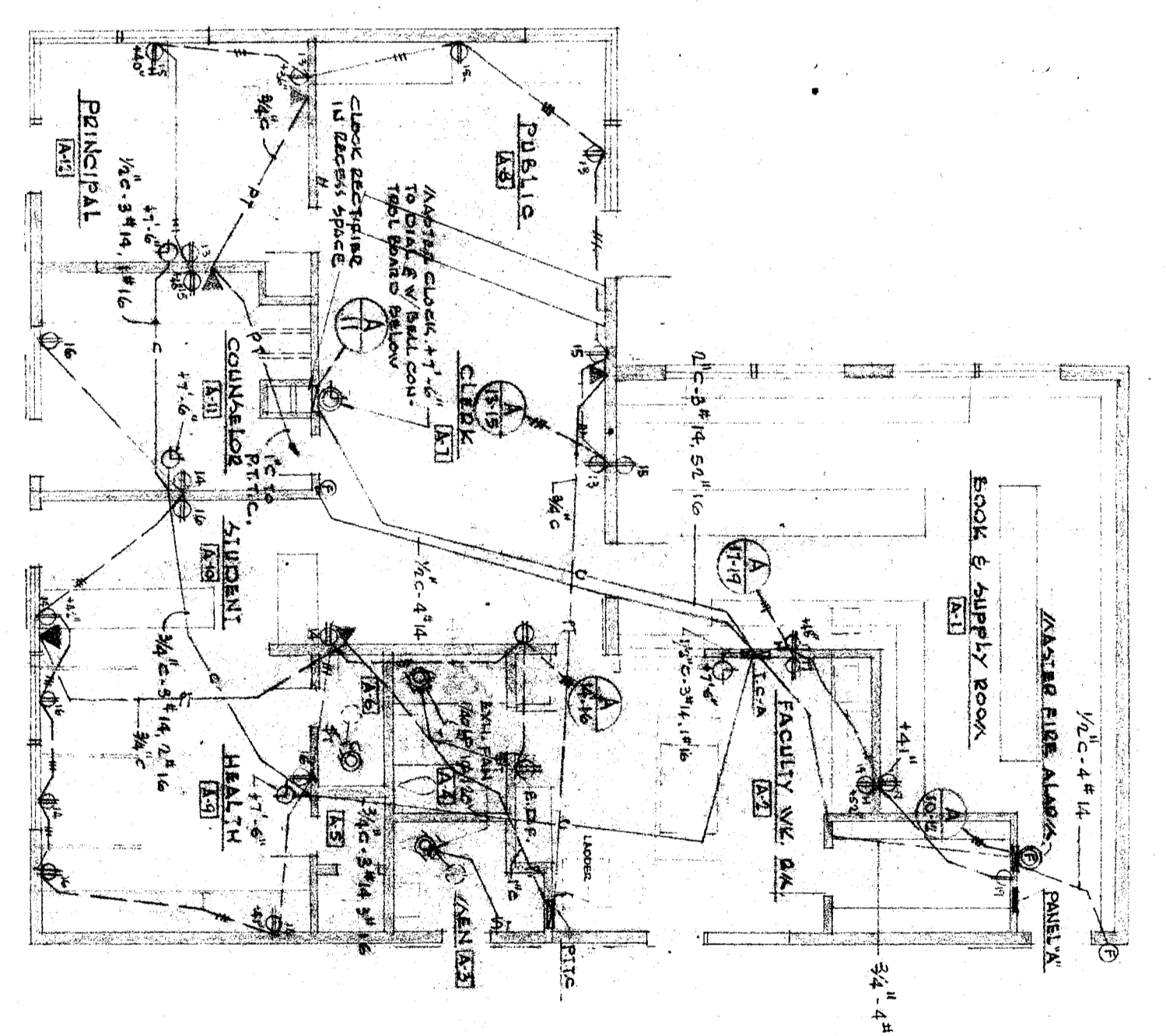


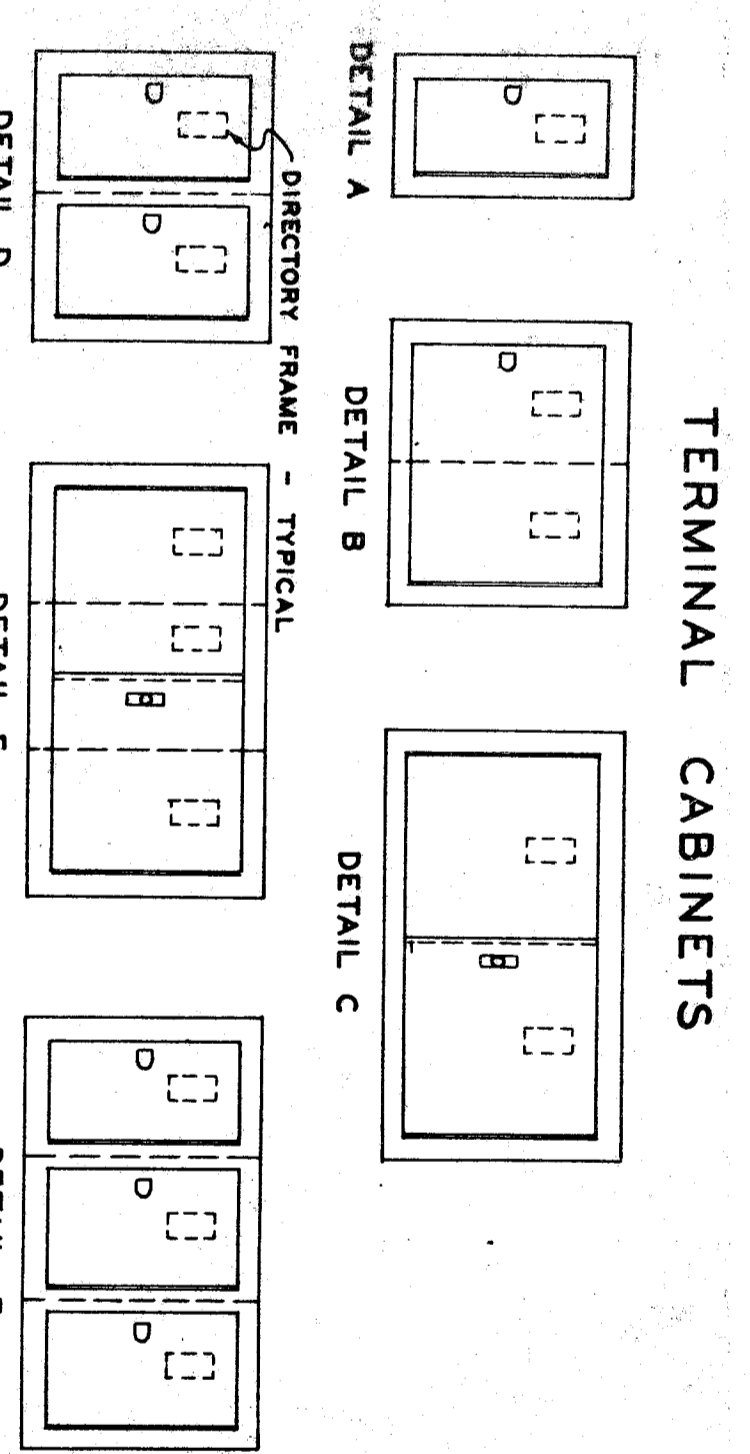
KITCHEN & FACULTY DINING FLOOD PLANS - POWER LAYOUT  
SCALE: 1/4" = 1'-0"

PANEL K-1 SCHEDULE

QUC	QUC	A	W	C	TYPE	REMARKS
1	1500				120V	RECEPTION
2	1500				120V	
3	1500				120V	
4	1500				120V	
5	1500				120V	
6	1500				120V	
7	1500				120V	
8	1500				120V	
9	1500				120V	
10	1500				120V	
11	1500				120V	
12	1500				120V	
13	1500				120V	
14	1500				120V	
15	1500				120V	
16	1500				120V	
17	1500				120V	
18	1500				120V	
TOTAL	27000	31500	31500			FEDERAL 2442



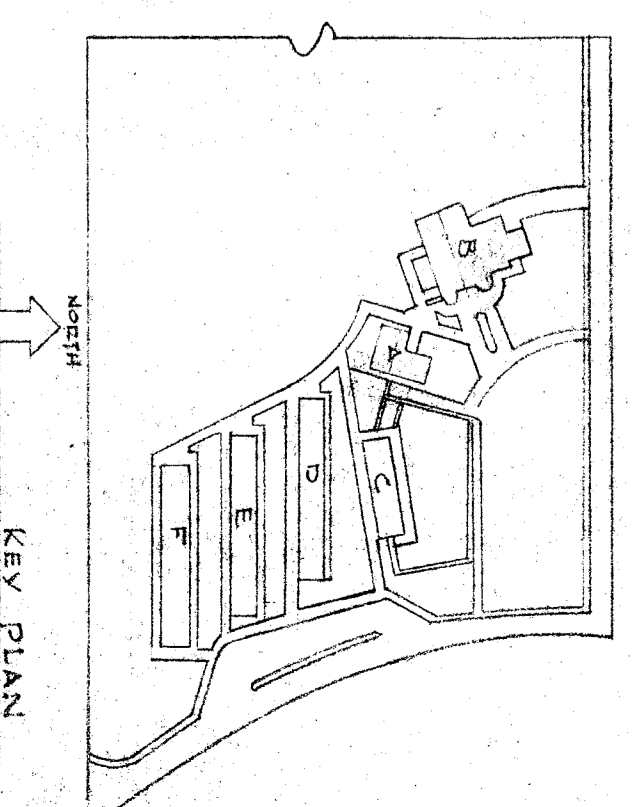
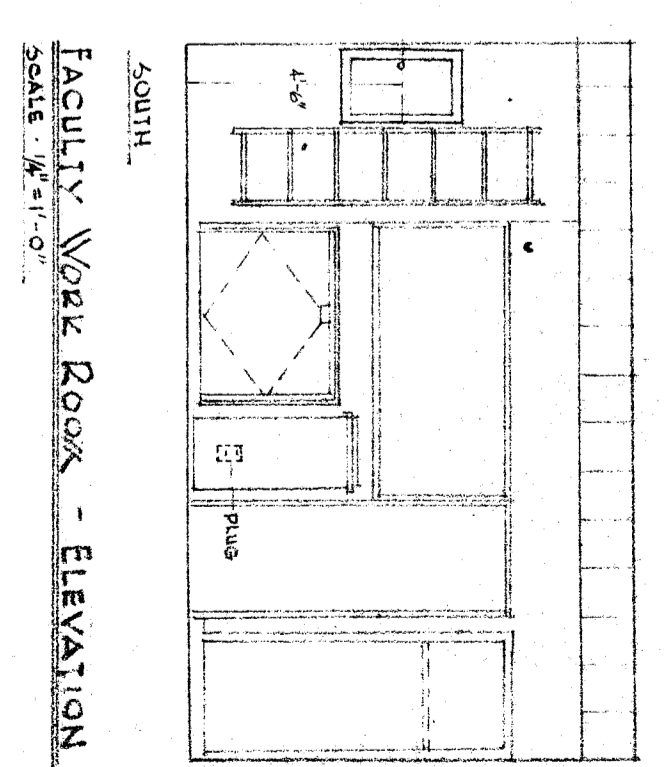
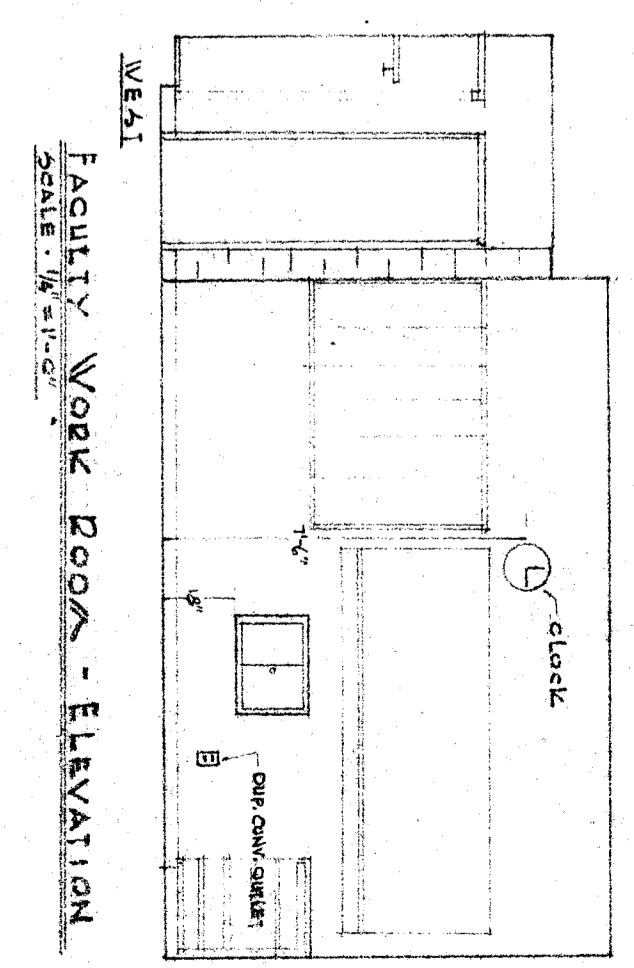
UNIT ADMINISTRATION - POWER & SIGNAL LAYOUT  
SCALE: 1/8" = 1'-0"



SCHEDULE:

TERMINAL	DESIGNATION OR PURPOSE	BOX SIZE W x H x D	BOX AMT.	DETAIL	BARRELS	VERT	CATCH	LOCK	FINISH
1	TC-A	20 1/2 x 18 1/2 x 4	4	A	1	15"			PAINT
2	TC-B	20 1/2 x 18 1/2 x 4	4	B	1	15"			PAINT
3	TC-C	20 1/2 x 18 1/2 x 4	4	C	1	15"			PAINT
4	TC-D	20 1/2 x 18 1/2 x 4	4	D	1	15"			PAINT
5	TC-E	20 1/2 x 18 1/2 x 4	4	E	1	15"			PAINT
6	TC-F	20 1/2 x 18 1/2 x 4	4	F	1	15"			PAINT

- NOTES:
1. BOXES TO BE CONSTRUCTED OF CODE GAUGE STEEL.
  2. FRONTS TO BE CONSTRUCTED OF CODE GAUGE STEEL. EACH DOOR TO HAVE DIRECTORY FRAME WITH CELLULOSE-ACTIVE COVER & EITHER "WALK" FLUSH CATCH (S LOCK) OR "COMBIN" 3PT. CATCH (A LOCK).
  3. CATCH AND FRONT SHALL BE IN ACCORDANCE WITH UNDERWRITERS LABORATORIES, INC. REQUIREMENTS & BEAR THEIR APPROVAL.



OFFICE OF SUPERINTENDENT OF SCHOOLS  
STATE OF CALIFORNIA  
DEPARTMENT OF PUBLIC WORKS  
DIVISION OF ARCHITECTURE

APPROVED: [Signature]  
DATE: [Blank]

BOARD OF EDUCATION  
BAKERSFIELD CITY SCHOOL DISTRICT  
[Signature]  
[Signature]

APPROVED: [Signature]  
DATE: [Blank]

CHECK AND VERIFY ALL DIMENSIONS AND CONDITIONS AT JOB SITE BEFORE PROCEEDING WITH THE WORK. REPORT ANY DISCREPANCIES TO THE ARCHITECT.

DATE DRAWN: [Blank]  
DATE CHECKED: [Blank]

ERNEST L. MCCOY A.I.A. ARCHITECT  
2811 H STREET  
BAKERSFIELD

CASE No. 60-16  
JOB No. 60-16  
ARCHITECT  
PHONE PA 43881  
CALIFORNIA

SECTION 15 SCHOOL  
PASADENA ST. & DENEGADE AVE.  
BAKERSFIELD, CALIFORNIA