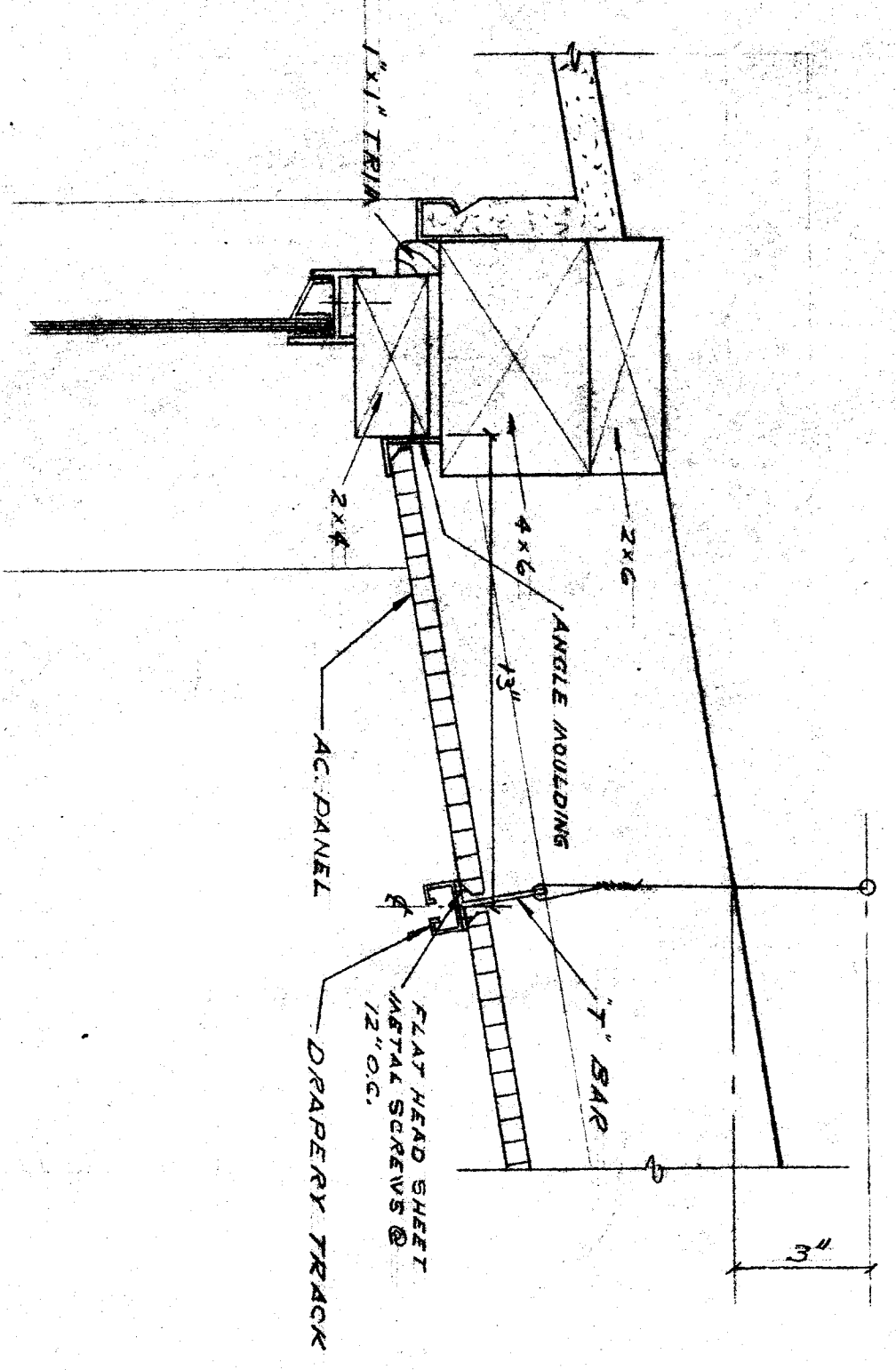
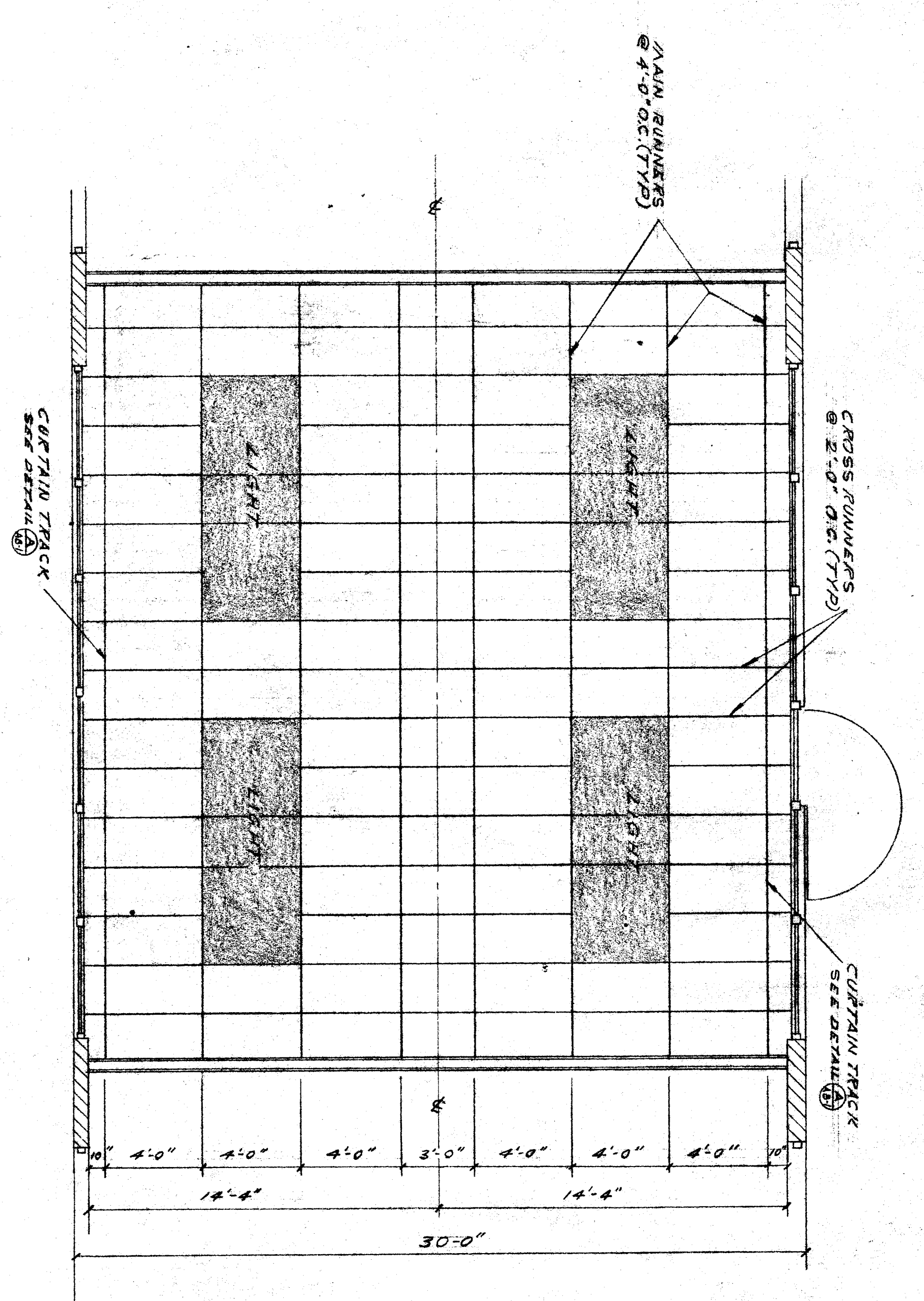


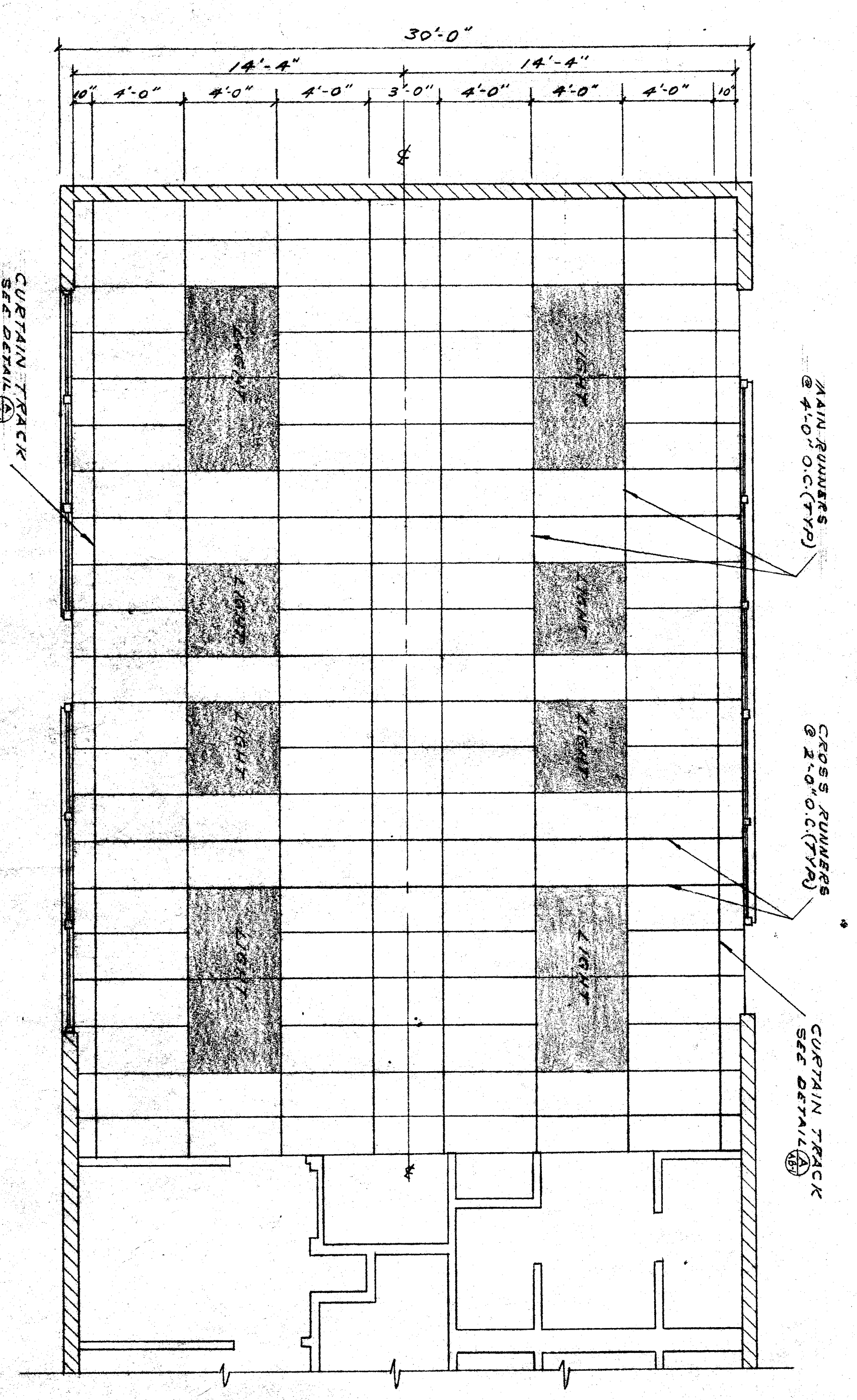
TYPICAL CLASSROOM SECTION SCALE 3/8"=1'-0"
KINDERGARTEN - SIMILAR



A HEAD OF CEIL. DET. 3/16"



REFLECTED CEILING PLAN OF TYP. CLASSROOM 1/4"=1'-0"
The Ceiling Light Panel to be Approved by State
Fred Marshall



REFLECTED CEILING PLAN - KINDERGARTEN 1/4"=1'-0"

OFFICE OF SUPERINTENDENT OF SCHOOLS
STATE OF CALIFORNIA
DEPARTMENT OF PUBLIC WORKS
DIVISION OF ARCHITECTURE

DATE: 9 5 7 1
APPROVED: 9 21 1958
PROJECT: BAKERFIELD CITY SCHOOL DISTRICT BOARD OF EDUCATION

APPROVED: [Signature]
DATE: [Blank]
REVISIONS: [Blank]

CHECK AND VERIFY ALL DIMENSIONS AND CONDITIONS AT JOB SITE BEFORE PROCEEDING WITH THE WORK. REPORT ANY DISCREPANCIES TO THE ARCHITECT.

SECTION 15 SCHOOL
BAKERFIELD, CALIFORNIA

