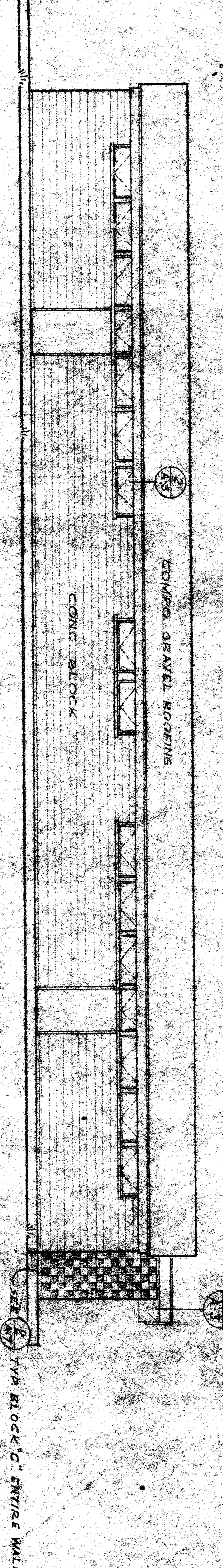
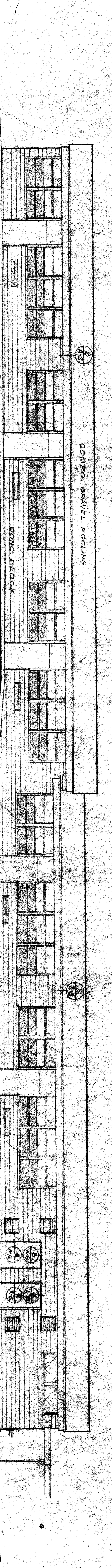


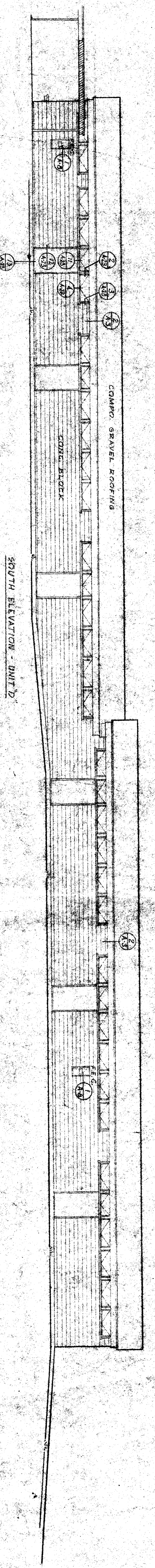
NORTH ELEVATION - UNIT C



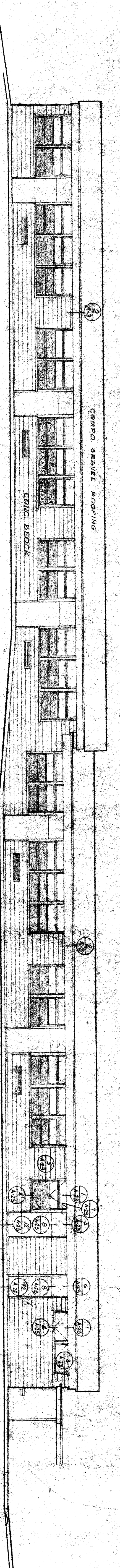
SOUTH ELEVATION - UNIT C



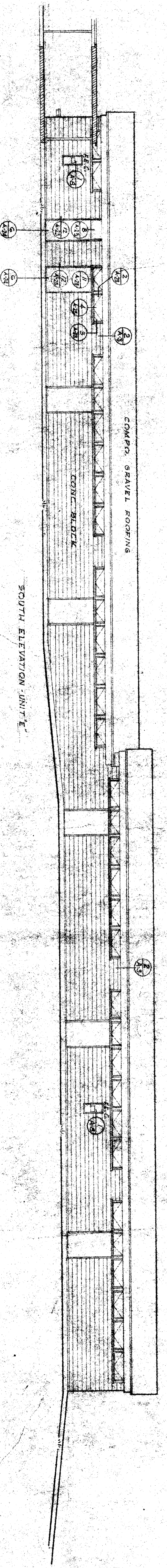
NORTH ELEVATION - UNIT D



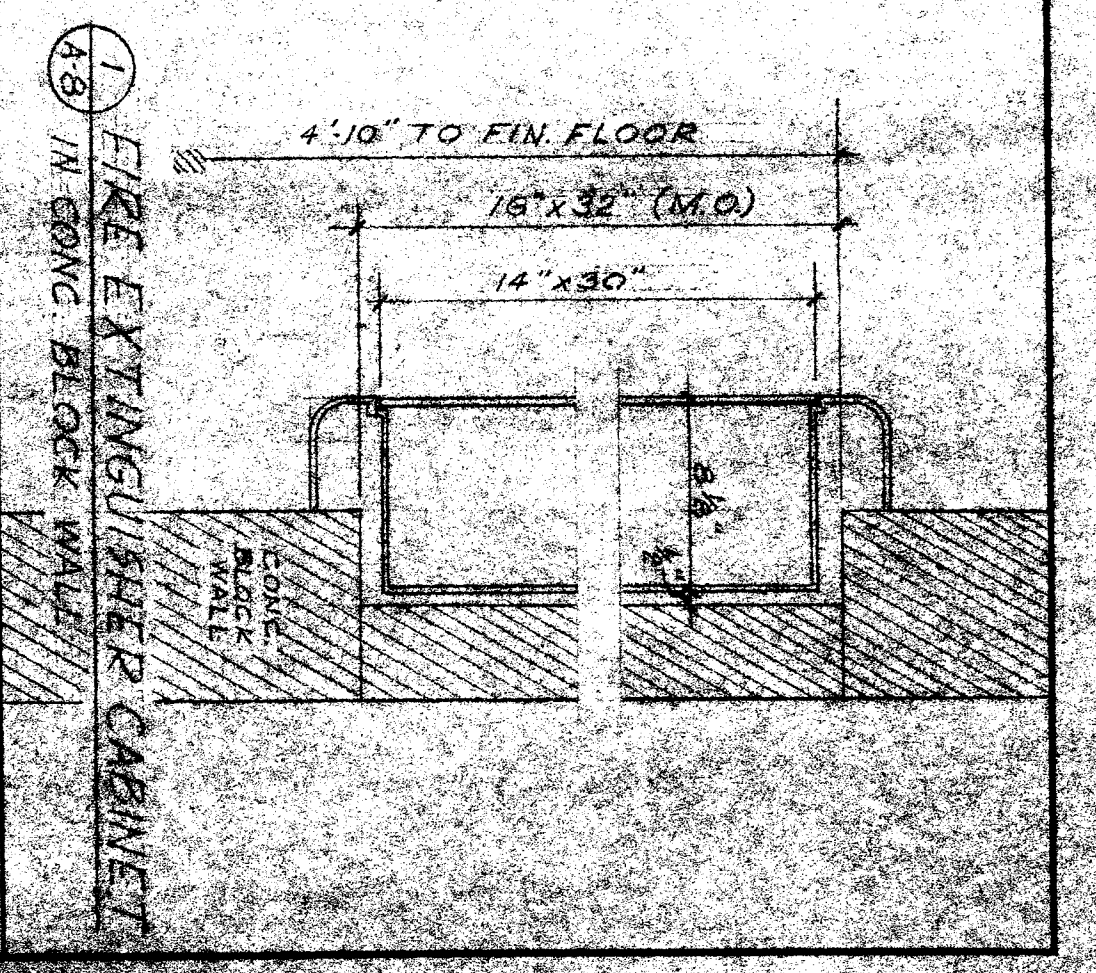
SOUTH ELEVATION - UNIT D



NORTH ELEVATION - UNIT E



SOUTH ELEVATION - UNIT E



EXTERIOR ELEVATIONS, UNITS C, D & E K.E.O.

OFFICE OF SUPERINTENDENT OF SCHOOLS
APPROVED
DATE

STATE OF CALIFORNIA
DEPARTMENT OF PUBLIC WORKS
DIVISION OF ARCHITECTURE

DATE OF SETTING: 20521
DATE: 7/1/1938

BAKERSFIELD CITY SCHOOL DISTRICT
BAKERSFIELD, CALIFORNIA
BOARD OF EDUCATION

APPROVED	DATE

CHECK AND VERIFY ALL DIMENSIONS AND CONDITIONS AT JOB SITE BEFORE PROCEEDING WITH THE WORK. REPORT ANY DISCREPANCIES TO THE ARCHITECT.	MARK	DATE	REVISIONS
	A		
	A		
	A		

BOARD OF EDUCATION
BAKERSFIELD CITY SCHOOL DISTRICT
1938
BY: [Signature]

APPROVED
ERNEST L. MCGOV A.I.A. ARCHITECT
2811 N. STREET
BAKERSFIELD

CASE
205 N. CO. 18
ERNEST L. MCGOV A.I.A. ARCHITECT
2811 N. STREET
BAKERSFIELD

SECTION 15 SCHOOL
PASADENA ST. & RENEGADE AVE
BAKERSFIELD, CALIFORNIA

