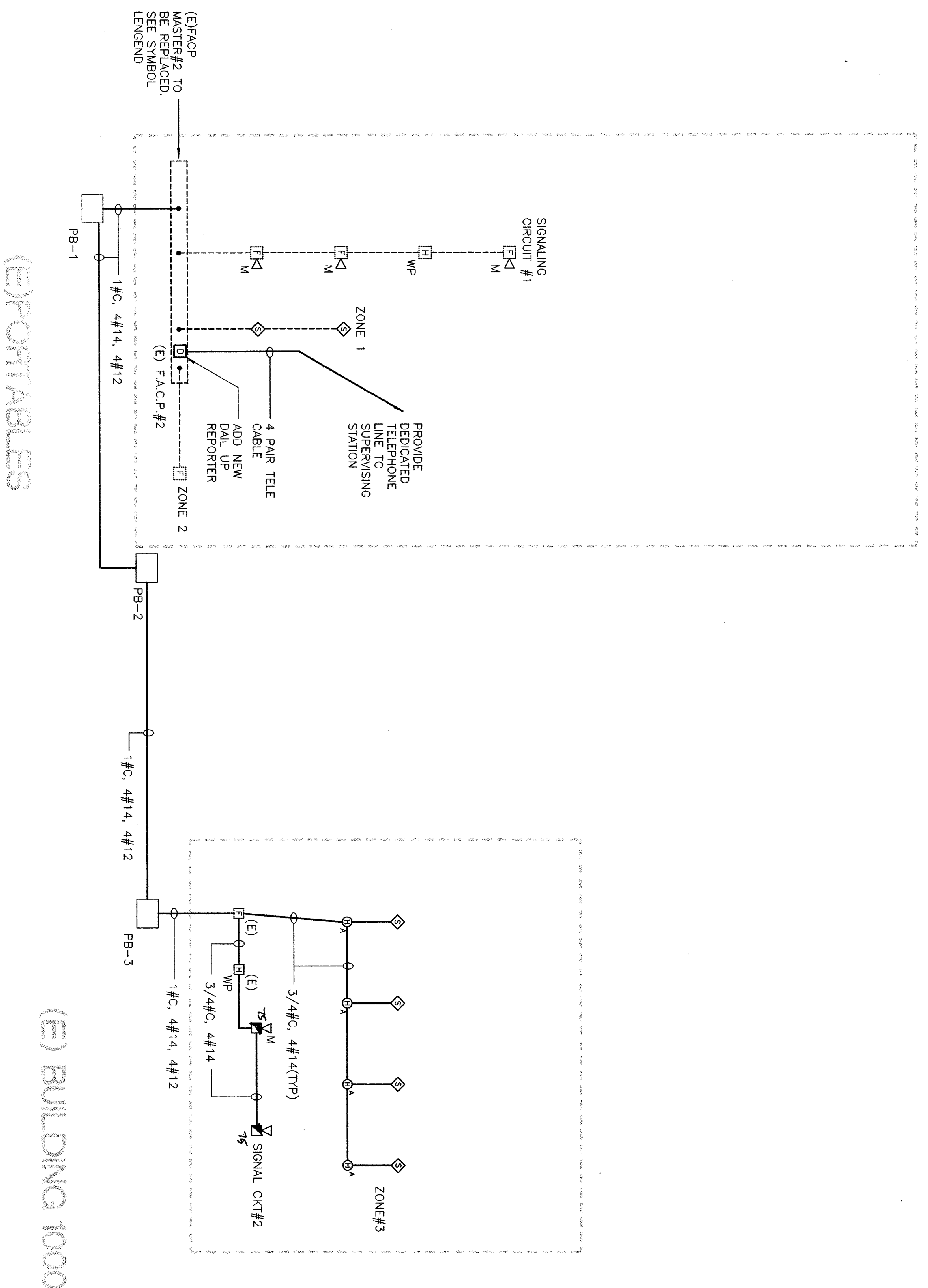


QTY.	DESCRIPTION	SUPPLY CURRENT	SUPPLY VOLTAGE	ALARM EACH	ALARM CABLE
1	REPLACEMENT 7.5W W/ ELIMINATOR	1.67A	-	-	2.689
4	SMOKE DETECTOR	0.0012	0.0048	-	-
2	MINI HORN	-	-	0.017	0.034
4	HEAT DETECTOR	0.0012	0.0048	-	-
	TOTALS			0.034	2.703

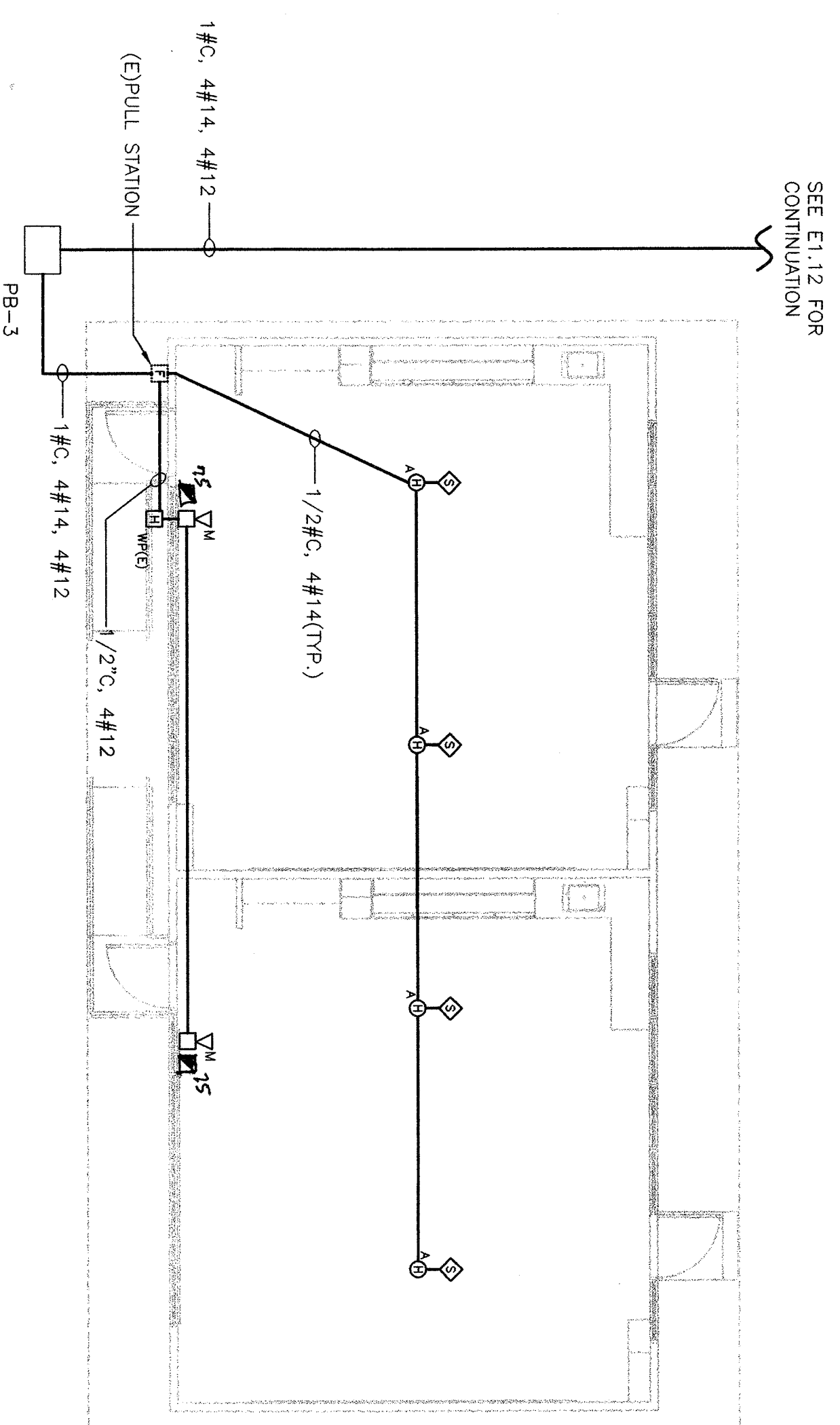
NOTE:
1. ITEMS LISTED FOR CALCULATION PURPOSES ONLY. PROVIDE ALL APPURTENANCES FOR COMPLETE SYSTEM.
2. EXISTING LOAD BASED ON PREVIOUS PROJECT DS#467362
3. REPLACE EXISTING 4.0 AMP HOUR BATTERY WITH NEW 7.0 AMP HOUR BATTERY.
4. RECONNECT EXISTING CIRCUITS TO NEW PANEL.

FIRE ALARM DEVICE SEQUENCE OF OPERATION MATRIX

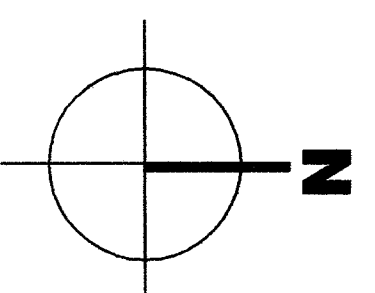
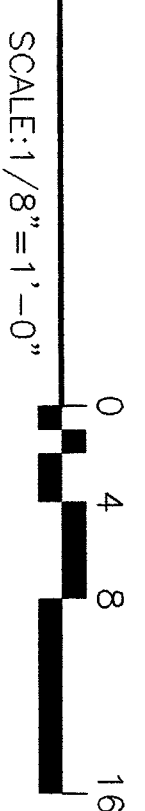
INITIATION RESPONSE	AREA, POWER, FAILURE	TROUBLE	FIRE SPRINKLER SWITCH	FIRE ALARM SWITCH
ANNUNCIATE AT SUPERVISING STATION	•	•	•	•
ANNUNCIATE AT ADMINSTRATIVE OFFICE	•	•	•	•
ACTIVATE AUDIOVISUAL SIGNAL AT SUPERVISING STATION	•	•	•	•



FIRE ALARM FLOOR PLAN BLDG. 1000



FIRE ALARM FLOOR PLAN BLDG. 1000



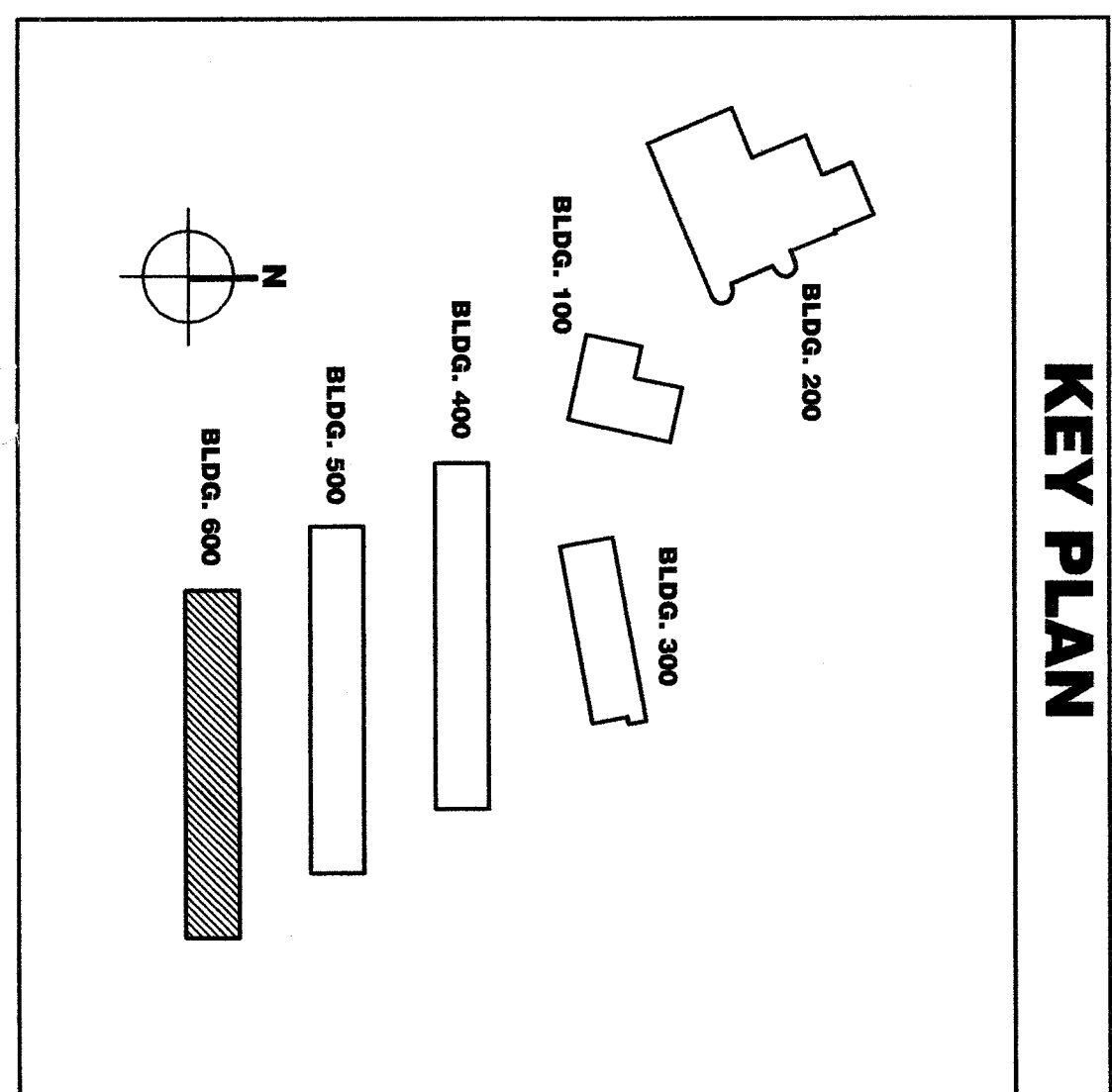
FA SYMBOL SCHEDULE

SYMBOL	NAME	DESCRIPTION
—	WIRING UNDER FLOOR OR IN WALL	3/4" C. MINIMUM U.O.N.
—	WIRING IN CEILING	3/4" C. MINIMUM U.O.N.
—	HOME RUN	TO RESPECTIVE PANEL OR TERM. CAB.
—	SURFACE TWO PIECE RACEWAY	WIRELOAD #
—	FIRE ALARM CONTROL STATION#2	HARRINGTON #HS-2800 8-ZONE
—	END OF THE LINE RESISTOR	CSM# 7165-0476/111
—	(E)FIRE ALARM PULL STATION	HARRINGTON #HPS-WP
—	(E)HORN (OUTDOOR)	WHEELLOCK #NT-12/24-08-R
—	HEAT DETECTOR IN ATTIC CONVENTIONAL	CHEMTRONICS #502
—	SMOKE DETECTOR	CSM #2720-1582/101
—	FIRE ALARM MINI-HORN	SYSTEM SENSOR #2400
—	JUNCTION BOX - AS REQUIRED	CSM #272-1209/103
—	JUNCTION BOX - 'W' INDICATES WIRELOAD	SUPERVISORY 40 LAMP
		W/BASE SYSTEM SENSOR#401
		CSM #7300-1209/128
		ALARM CURRENT 51MA
		WHEELLOCK #M12C-24R
		CSM #7165-0476/111
		4S BOX & FLUSH PLATE MINIMUM

NOTE:
SEE E1.12 FOR ADDITION NOTES AND SCOPE OF WORK.

VOLTAGE DROP CALCULATION CKT# S-2
 VD = Voltage Drop
 I = Total Load = .032 Amps
 L = Length of Cable = 250'
 CM = Distance to the load (250')
 V = Voltage (24Vdc)
 VD = $K \cdot CM \cdot I \cdot L$ OR $1.1 \cdot .032 \cdot 250 \cdot 21 = 0.027$
 VD = 0.027/24 = .0011 OR 0.11 % VOLTAGE DROP

**FULLY AUTOMATIC SYSTEM
FIRE ALARM COMPLETE
PLAN SUBMITTAL**



bfgc
Architecture

Bakersfield
5500 Ming Avenue, Suite 450, Bakersfield, CA 93309
861.836.4300
for 861.836.4311

San Jose
190 South First St., Suite 200
San Jose, CA 95113
408.972.0861
for 408.972.0814

San Luis Obispo
4115 Road Street, Suite 108
San Luis Obispo, CA 93401
805.546.6433
for 805.546.6204

Oakland
300 Frank Ogden Plaza, Suite 300
Oakland, California 94612
for 510.881.0674

Principal Architects
1115 Broadway, Suite 1115
Berkeley, CA 94710
415.841.1111
for 415.841.1111

INTERPRETE ENGINEERING
466 W. Garbocock Ave., Suite 106
Livermore, CA 94550
(925) 432-4601 / (925) 432-4641 fax
James W. Garbocock, Electrical Engineer
E.E. #9101

MODERNIZATION
FOR
COLONEL HOWARD NICHOLS
SCHOOL
3401 RENEGADE AVE.
BAKERSFIELD, CA 93306
BAKERSFIELD CITY
SCHOOL DISTRICT

**BUILDING 1000
FIRE ALARM
FLOOR PLAN,
CALCS, SCHEDULES
& RISER DIAGRAM**

Version Date: 02-11-27
Job no.: 02-11-27
date: 06/24/03
drawn by: T.A.
chkd by: D.O.
© copyright 2003

2.72