

Bakersfield
5500 ming avenue, suite 450, bakersfield, ca 93309
651.836.4300 fax 651.836.4311

San Jose
150 south first st., suite 200
santa clara, ca 95001
408.529.0881
fax 408.529.0844

San Luis Obispo
4115 madison street, suite 3-8
san luis obispo, ca 93401
805.546.0033
fax 805.546.0034

Oakland
350 frank ogawa plaza, suite 300
oakland, california 94612
415.763.8272
fax 510.881.0674

Principal Architects
c-3189
m-3132
p-3132
1000 north h street, suite 100
bakersfield, ca 93304
c-8078
m-8078
p-8078

REGISTERED PROFESSIONAL ENGINEER
No. 5101
09/30/06
EXPIRES 09/30/08
JAMES R. GARDNER
ELECTRICAL ENGINEER
144 W. Fairbrook Ave., Suite 104
Fresno, California 93711
(559) 432-4490 / (559) 432-4494 fax
ESTABLISHED 1988
Johnnie W. Gardner, Electrical Engineer
E.E. #5101

FILE NO. 15-8
IDENTIFICATION STAMP
DIV. OF CONSTRUCTION
PERMITS AND INSPECTION
DATE: 03-10-0664
NO. 15-8
DATE: AUG 23 2006

MODERNIZATION
FOR
COLONEL HOWARD NICHOLS
SCHOOL
3401 RENEGADE AVE.
BAKERSFIELD, CA 93306
BAKERSFIELD CITY
SCHOOL DISTRICT

BUILDING 1000
LIGHTING AND
POWER/SIGNAL
FLOOR PLANS

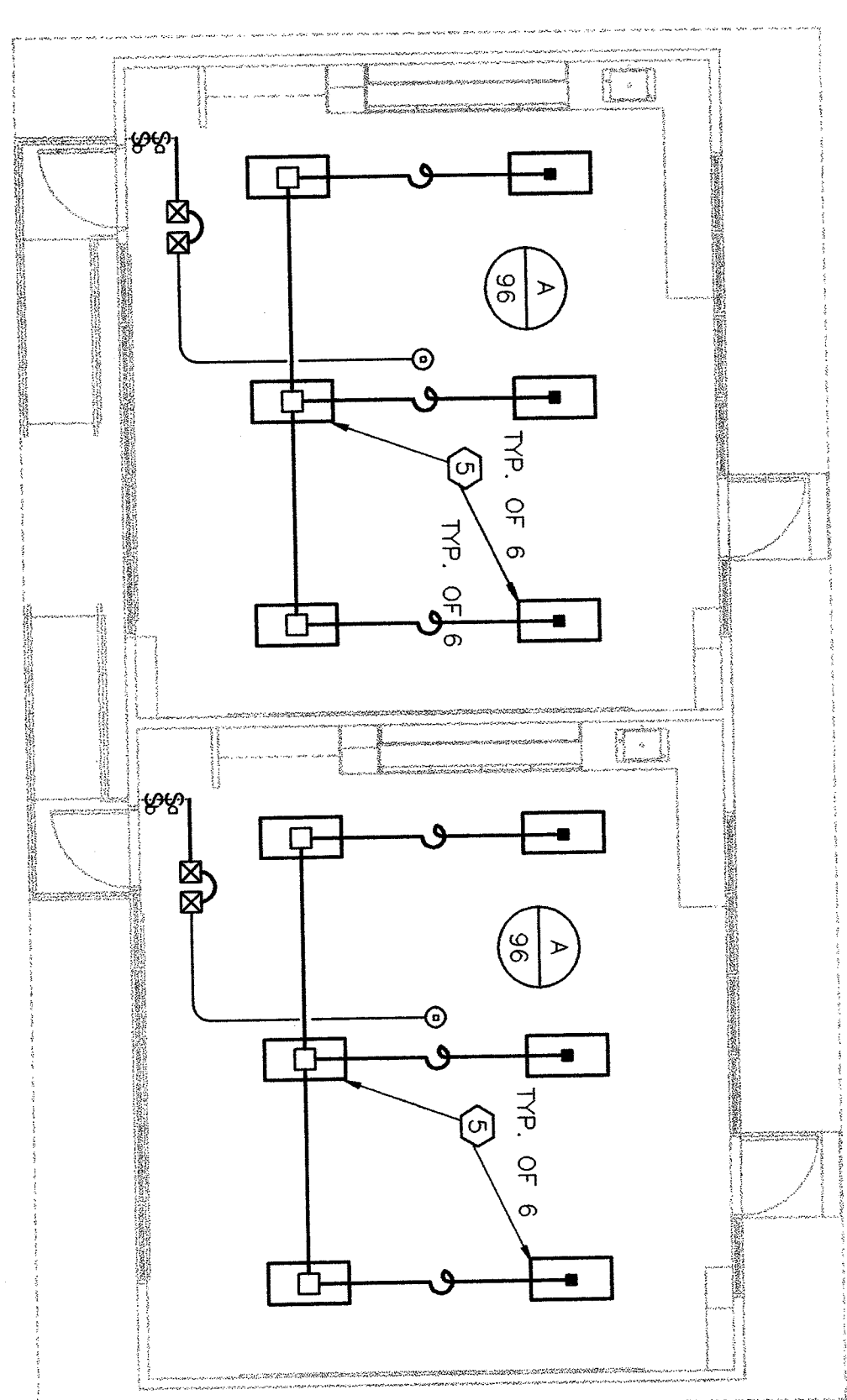
Version Date:	02-1-127	Version Time:
Job no.:	06/24/03	
date:	T.A.	
drawn by:	D.G.	
chkd by:	2003	

2.77

KEYNOTES

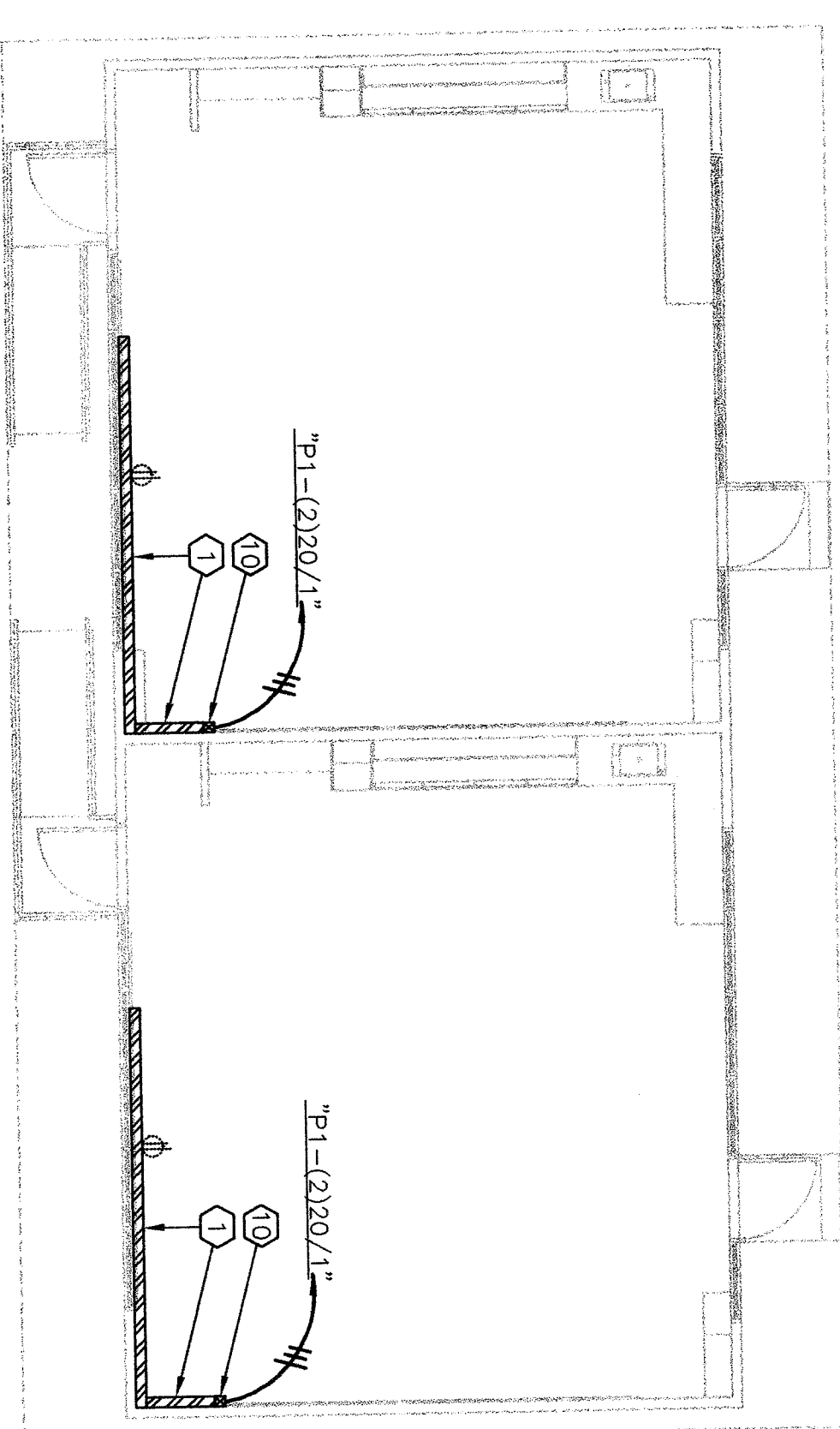
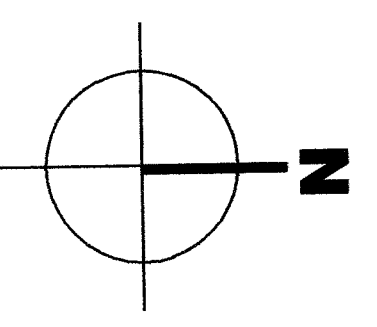
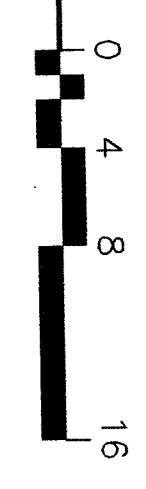
NOTE: KEYNOTES IN THIS LIST MAY NOT NECESSARILY OCCUR ON THIS SHEET.

- ① INSTALL WIREMOLD # 5400 WITH OUTLETS AT 30" O.C. COORDINATE MTS. HEIGHT WITH ARCHITECT'S ELEVATIONS.
- ② REPLACE EXISTING EXTERIOR DOWNLIGHT. USE RETROFIT KIT REPLACE TYPE "F".
- ③ REPLACE EXISTING WALL BRACKET FIXTURE. USE FIXTURE TYPE "O".
- ④ REPLACE EXISTING FIXTURES. USE FIXTURES TYPE "A".
- ⑤ DISCONNECT AND REMOVE EXISTING 2x4 SURFACE METAL SIDED FIXTURES. REUSE (E) HOME RUN AS APPLICABLE.
- ⑥ REPLACE EXISTING FIXTURE WITH NEW FIXTURE TYPE "O". EXISTING FIXTURE TO REMAIN.
- ⑦ EXISTING 2x4 SURFACE METAL SIDED FIXTURES WITH (2) 40W T12 LAMPS. REPLACE LAMPS WITH (2) T8 LAMPS. REPLACE BALLAST WITH RAPID START LOW HARMONICS ELECTRONIC BALLAST. REPLACE LENS WITH KSH K12/12S ACRYLIC LENS.
- ⑧ DISCONNECT AND REMOVE EXISTING FIXTURES.
- ⑨ WIREMOLD # 5400 RISER UP TO CEILING.
- ⑩ REPLACE (E) PANEL "F". NEW PANEL SHALL HAVE (42) 20/1 BREAKERS, 100A BUS, USE SQUARE "D" NOOD(B) OR EQUAL. RECONNECT (E) CIRCUITS AND FEEDER.

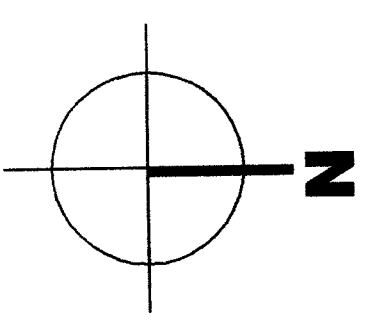
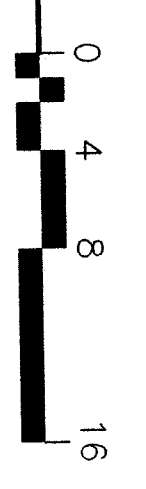


Item (9)
#12
Refer to Electrical Drawings, Sheet E2.71, "Building 1000 - Lighting Floor Plan."
CLARIFY contractor shall replace existing light fixture as indicated.

LIGHTING FLOOR PLAN BLDG. 1000



POWER/SIGNAL FLOOR PLAN BLDG. 1000



KEY PLAN

