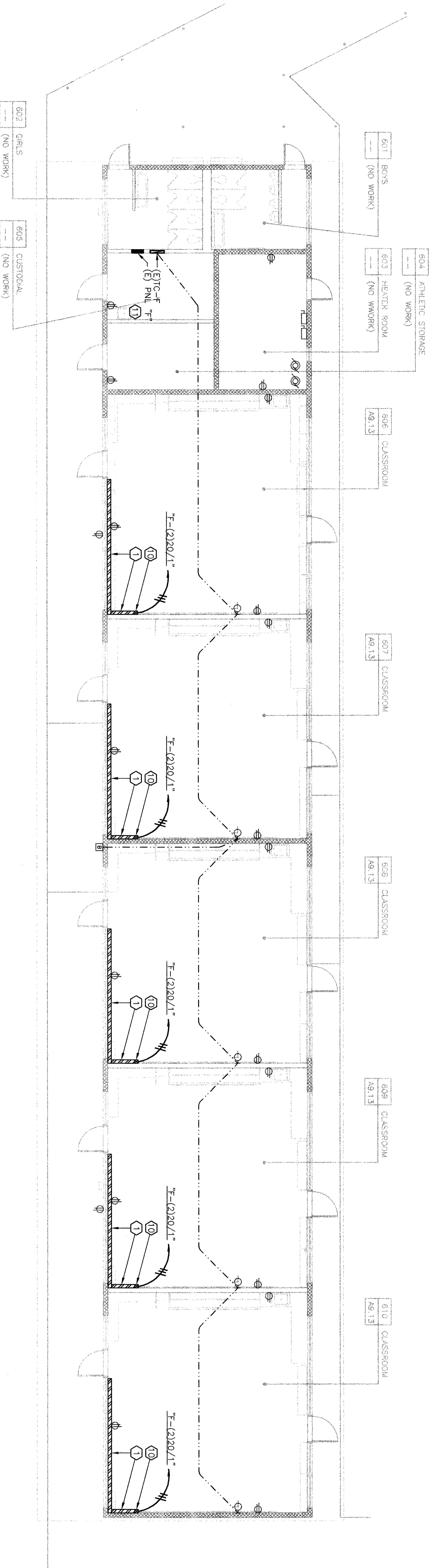
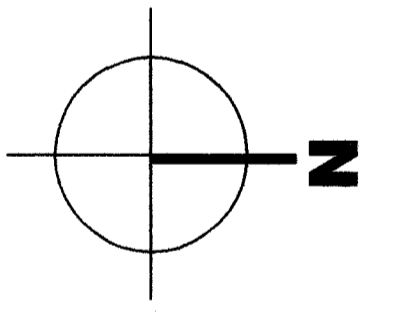


KEYNOTES

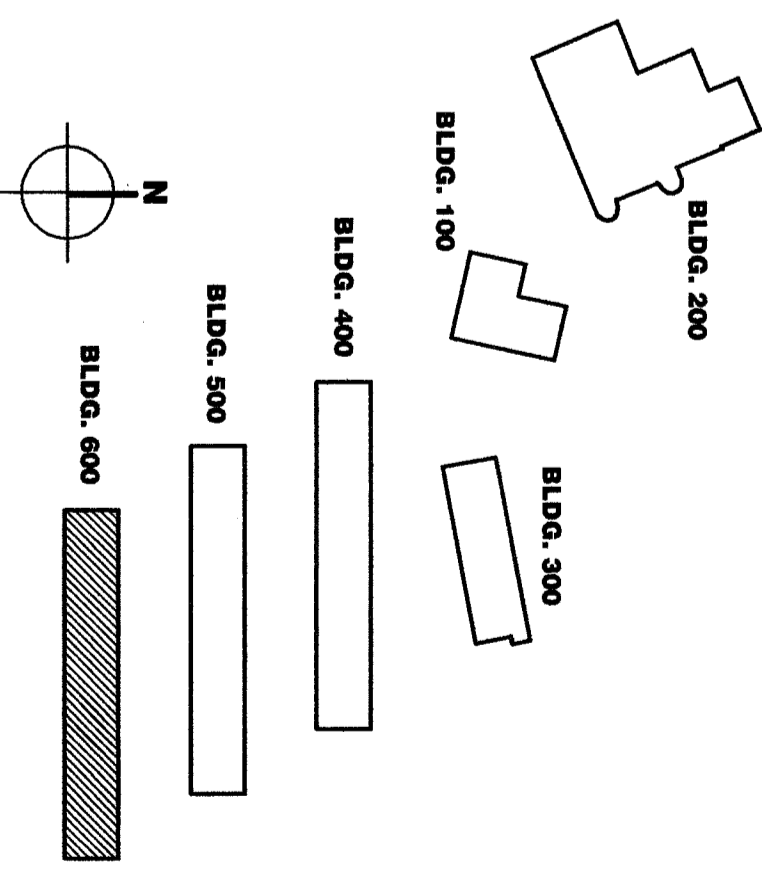
- NOTE: KEYNOTES IN THIS LIST MAY NOT NECESSARILY OCCUR ON THIS SHEET.
- 1 INSTALL WIREMOLD # 5400 WITH OUTLETS AT 30" O.C. COORDINATE MTG. HEIGHT WITH ARCHITECT'S ELEVATIONS.
 - 2 REPLACE EXISTING EXTERIOR DOWNLIGHT. USE RETROFIT KIT FIXTURE TYPE "A.C."
 - 3 REPLACE EXISTING WALL BRACKET FIXTURE. USE FIXTURE TYPE "D.C."
 - 4 REPLACE EXISTING FIXTURES. USE FIXTURES TYPE "C.C."
 - 5 DISCONNECT AND REMOVE EXISTING 2x4 SURFACE METAL SIDED FIXTURES. REUSE (E) HOME RUN AS APPLICABLE.
 - 6 REPLACE EXISTING FIXTURE WITH NEW FIXTURE TYPE "D.C." EXISTING FIXTURE TO REMAIN.
 - 7 EXISTING 2x4 SURFACE METAL SIDED FIXTURES WITH (2) 40W T-8 LAMPS. REPLACE LAMPS WITH (2) 18 LAMPS. REMOVE EXISTING BALLASTS. REPLACE BALLASTS WITH KSH K12.125 ACRYLIC LENS.
 - 8 DISCONNECT AND REMOVE EXISTING FIXTURES.
 - 9 WIREMOLD # RISER UP TO CEILING.
 - 10 REPLACE (E) PANEL "T". NEW PANEL SHALL HAVE (42) 20/1 BREAKERS, 100A BUS, USE SQUARE "D" NOOD(9) OR EQUAL. RECONNECT (E) CIRCUITS AND FEEDER.



POWER / SIGNAL FLOOR PLAN BLDG. 600



KEY PLAN



Bakersfield

5500 ming avenue, suite 450, bakersfield, ca 93309
 801.356.4300
 for 801.356.5311

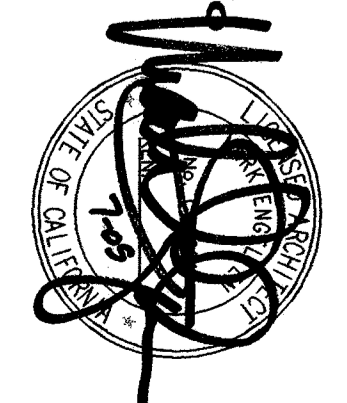
San Jose

501 north main, suite 200
 san jose, california 95113
 408.924.0944
 for 408.924.0944



Oakland

300 frank ogden road, suite 300
 oakland, california 94612
 510.881.0070
 for 510.881.0074



Principal Architects

donald r. wilson, a.i.a., c-5186
 james w. godwin, a.i.a., c-10011
 465 w. franklin ave., suite 105
 fremont, california 94731
 (510) 452-4490 / (510) 452-4494 fax
 james w. godwin, a.i.a., c-10011
 wilson r. godwin, a.i.a., c-5186
 franklin, fremont, ca 94539
 for 510.881.0074

PRESTATE ENGINEERING
 465 W. FRANKLIN AVE., SUITE 105
 FREMONT, CALIFORNIA 94731
 (510) 452-4490 / (510) 452-4494 fax
 JAMES W. GODWIN, REGISTERED PROFESSIONAL ENGINEER
 E.T. #5101

FILE NO. 15-B
 REGISTRATION STATE
 DIV. OF THE STATE ARCHITECT
 PER. NO. 03-106664
 AG. REG. 88 R.2
 DATE 03/28/03

MODERNIZATION
 FOR
 COLONEL HOWARD NICHOLS
 SCHOOL
 3401 RENEGADE AVE.
 BAKERSFIELD, CA 93306
 BAKERSFIELD CITY
 SCHOOL DISTRICT

**BUILDING 600
 POWER / SIGNAL
 FLOOR PLAN**

Version Date: 02-1-127
 Job no. 02-1-127
 date 06/24/03
 drawn by T.A.
 cked by D.A.
 ©copyright 2003

2.61TB