

**Bakersfield**

5500 ring overture, suite 450, bakersfield, ca 93309  
801.836.9330  
fax: 801.836.4311

**San Jose**  
150 south first street, suite 200  
san jose, california 95113  
408.929.0341  
fax: 408.262.6944

**San Luis Obispo**  
4115 bond street, suite b-4  
san luis obispo, ca 93401  
805.546.0004  
fax: 805.546.0004



**Oakland**  
308 frank square plaza, suite 300  
oakland, california 94612  
510.881.0670  
fax: 510.881.0674

**Principal Architects**  
David T. Gordon, AIA, C-4444  
David R. Wilson, AIA, C-4444  
John W. Cochran, AIA, C-2022  
William F. Winkler, AIA, C-18079

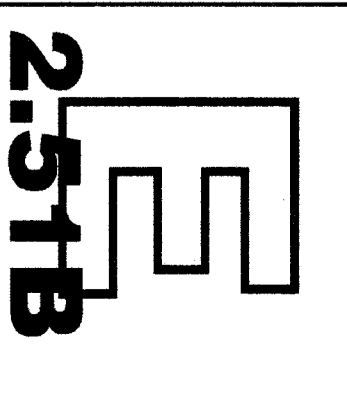
**INTERSTATE ENGINEERING**  
440 W. Piedmont Ave., Suite 100  
Fresno, California 93711  
559.432.4400 / 559.432.4494 fax  
James W. Cochran, Electrical Engineer  
E.E. #5101  
ESTABLISHED 1988

**FILE NO. 13-5**  
INVESTIGATION STAMP  
DIV. OF THE STATE ARCHITECT  
APR. 03  
03-106664  
NO. 13-5  
DATE: APR. 2, 2003

**MODERNIZATION**  
FOR  
COLONEL HOWARD NICHOLS  
SCHOOL  
3401 RENEGADE AVE.  
BAKERSFIELD, CA 93306  
BAKERSFIELD CITY  
SCHOOL DISTRICT

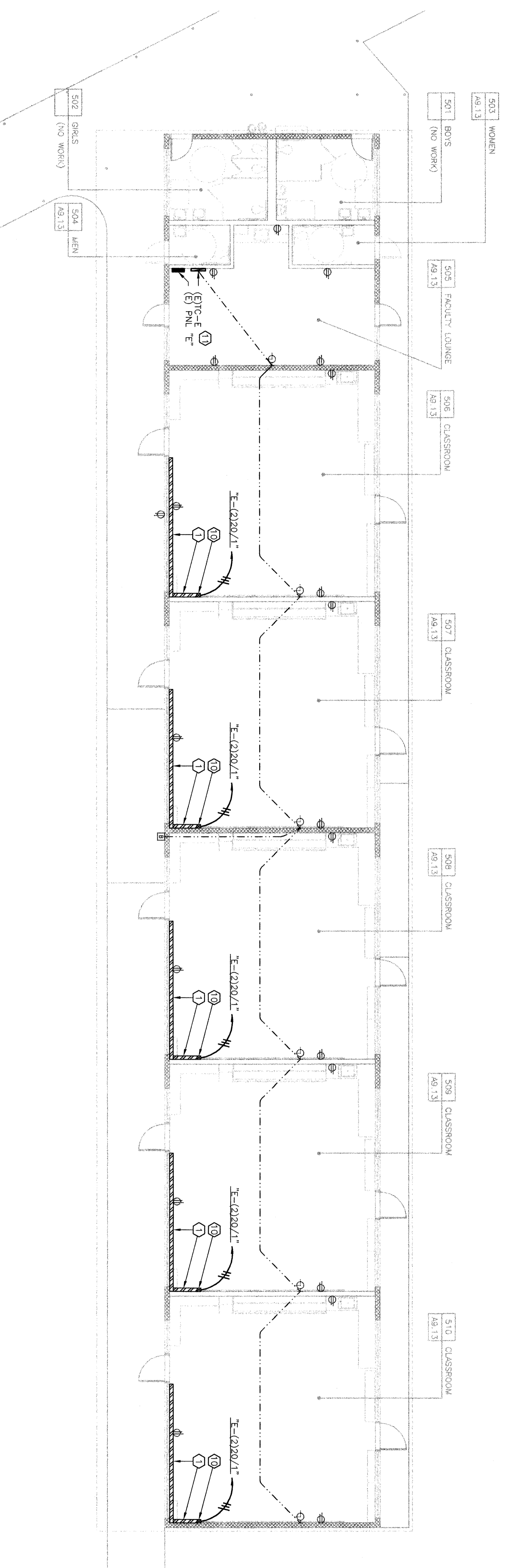
**BUILDING 500  
POWER / SIGNAL  
FLOOR PLAN**

Version Date:	Version Times:
Job no. 02-127	
date 06/24/03	
drawn by T.A.	
checked by D.G.	
©copyright 2003	



**KEYNOTES**

- NOTE: KEYNOTES IN THIS LIST MAY NOT NECESSARILY OCCUR ON THIS SHEET.
- 1 INSTALL WIREMOLD # 5400 WITH OUTLETS AT 30" O.C. COORDINATE MFG. HEIGHT WITH ARCHITECT'S ELEVATIONS.
  - 2 REPLACE EXISTING EXTERIOR DOWNLIGHT. USE RETROFIT KIT FIXTURE TYPE "A".
  - 3 REPLACE EXISTING WALL BRACKET FIXTURE. USE FIXTURE TYPE "B".
  - 4 REPLACE EXISTING FIXTURES. USE FIXTURES TYPE "C".
  - 5 DISCONNECT AND REMOVE EXISTING 2x4 SURFACE METAL SIDED FIXTURES. REUSE (E) HOME RUN AS APPLICABLE.
  - 6 REPLACE EXISTING FIXTURE WITH NEW FIXTURE TYPE "D". EXISTING FIXTURE TO REMAIN.
  - 7 EXISTING 2x4 SURFACE METAL SIDED FIXTURES WITH (2) REMAIN. REPLACE EXISTING WITH (2) NEW 2x4 SURFACE METAL SIDED FIXTURES WITH (2) NEW 2x4 SURFACE METAL SIDED FIXTURES WITH (2) NEW ELECTRONIC BALLAST. REPLACE LENS WITH KSH K12125 ACRYLIC LENS.
  - 8 DISCONNECT AND REMOVE EXISTING FIXTURES.
  - 9 WIREMOLD # 5400 RISER UP TO CEILING.
  - 10 REPLACE (E) PANEL "E". NEW PANEL SHALL HAVE (42) 20/1 BREAKERS, 100A BUS, USE SQUARE "D" NOOD(B) OR EQUAL. RECONNECT (E) CIRCUITS AND FEEDER.
  - 11



**POWER / SIGNAL FLOOR PLAN BLDG. 500**

