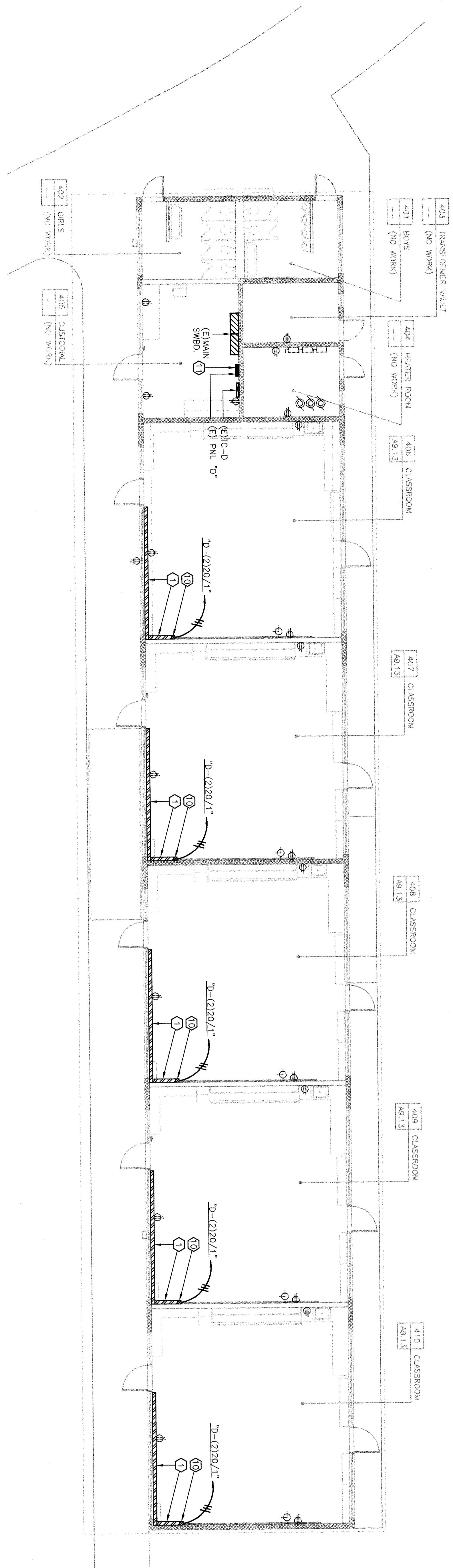
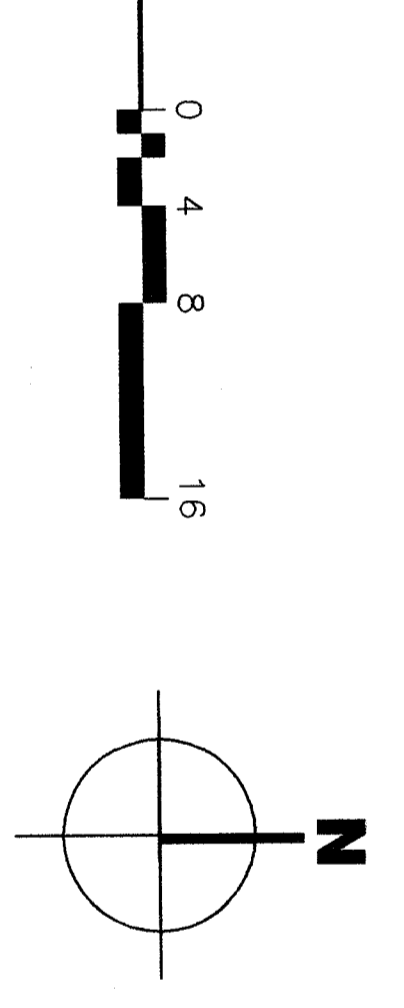


KEYNOTES

- NOTE: KEYNOTES IN THIS LIST MAY NOT NECESSARILY OCCUR ON THIS SHEET.
- 1 INSTALL WIREMOLD # 5400 WITH OUTLETS AT 30" O.C. COORDINATE MFG. HEIGHT WITH ARCHITECT'S ELEVATIONS.
 - 2 REPLACE EXISTING EXTERIOR DOWNLIGHT. USE RETROFIT KIT FIXTURE TYPE "L".
 - 3 REPLACE EXISTING WALL BRACKET FIXTURE. USE FIXTURE TYPE "L".
 - 4 REPLACE EXISTING FIXTURES. USE FIXTURES TYPE "L".
 - 5 DISCONNECT AND REMOVE EXISTING 2x4 SURFACE METAL SIDED FIXTURES. REUSE (E) HOME RUN AS APPLICABLE.
 - 6 REPLACE EXISTING FIXTURE WITH NEW FIXTURE TYPE "L". EXISTING FIXTURE TO REMAIN.
 - 7 EXISTING 2x4 SURFACE METAL SIDED FIXTURES WITH (2) 2x4x2x1/2" BRACKET WITH RAPID START LOW HARMONICS ELECTRONIC BALLAST REPLACE LENS WITH KSH K12.125 ACRYLIC LENS.
 - 8 DISCONNECT AND REMOVE EXISTING FIXTURES.
 - 9 WIREMOLD # 5400 RISER UP TO CEILING.
 - 10 REPLACE (E) PANEL "D". NEW PANEL SHALL HAVE (42) 20/1 BREAKERS, 100A BUS, USE SQUARE "D" NOOD(9) OR EQUAL. RECONNECT (E) CIRCUITS AND FEEDER.



POWER / SIGNAL FLOOR PLAN BLDG. 400



KEY PLAN

