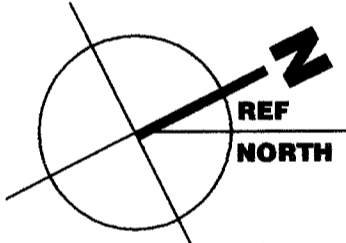


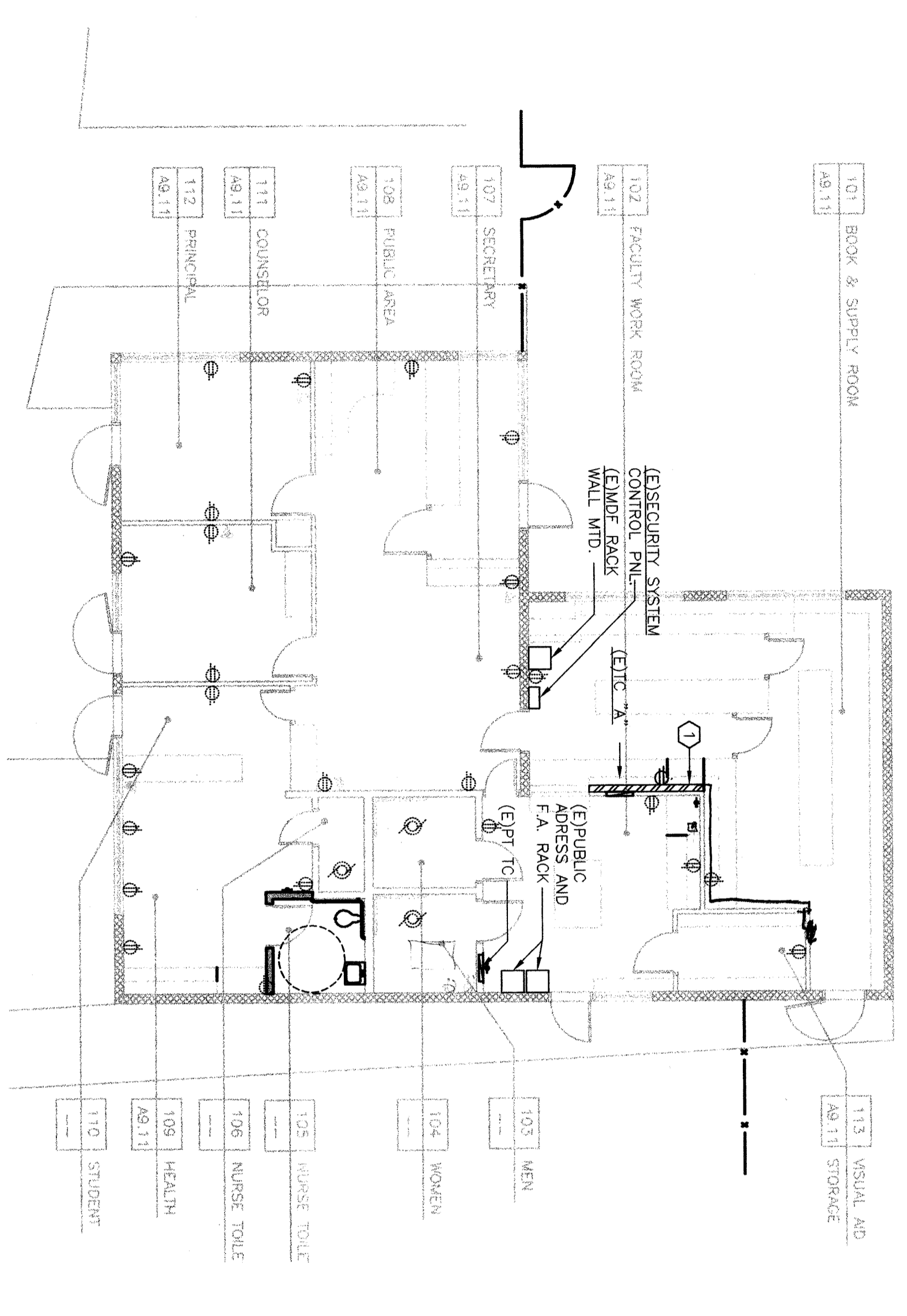
LIGHTING FLOOR PLAN BLDG. 100



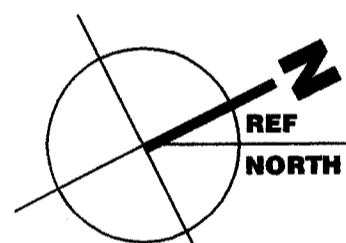
- Item (7)
#4
Refer to Electrical Drawings, Sheet E24.11 - Building 100 - Lighting Floor Plan.
REMOVE existing 2x4 light fixture at northeast corner of Health (109). Patch and repair existing ceiling as required.
- Item (4)
#2
Refer to Electrical Drawings, Sheet E24.11 - Building 100 - Lighting Floor Plan.
REVERSE light fixture to "Type C1" in lieu of "Type D" for Room 105.

KEYNOTES

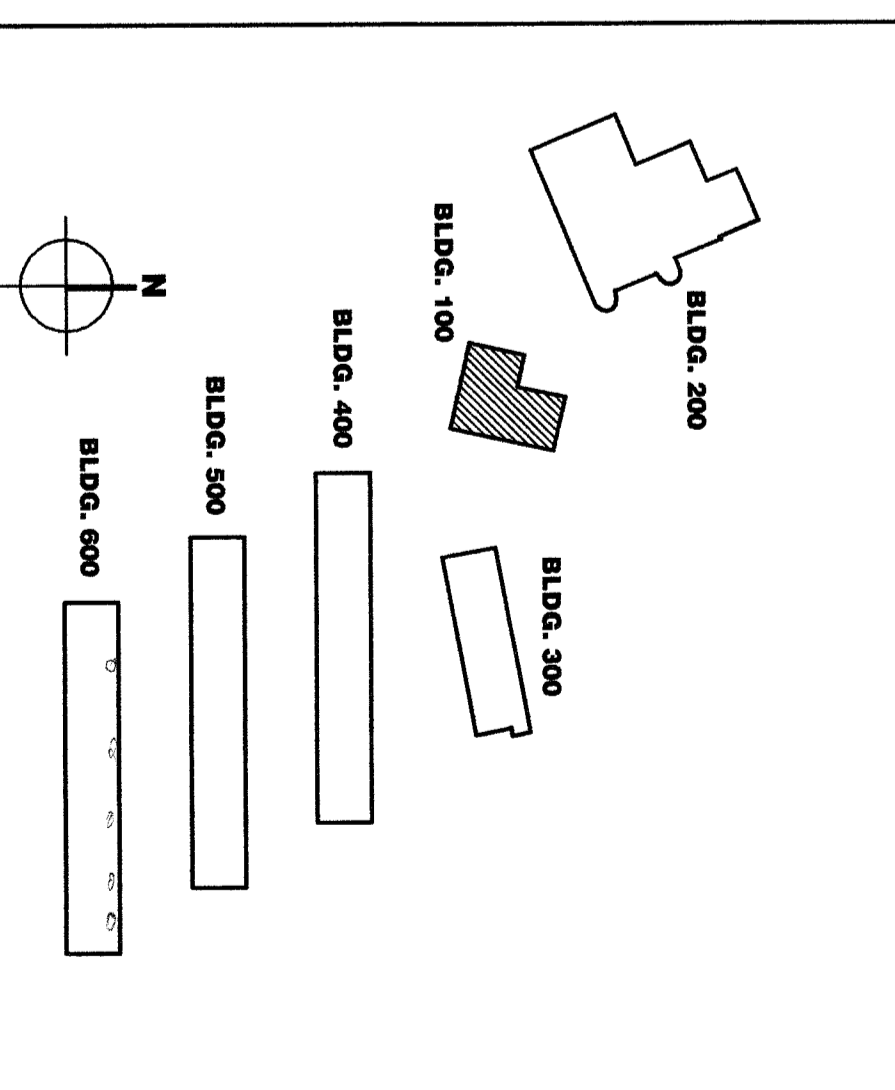
- NOTE: KEYNOTES IN THIS LIST MAY NOT NECESSARILY OCCUR ON THIS SHEET.
- 1 INSTALL WIRELOD WIRELOD # 5400 WITH OUTLETS AT 12" O.C. MOUNTED ABOVE BACKSPASH. CONNECT TO EXISTING DUPLEX OUTLET ABOVE COUNTER.
 - 2 REPLACE EXISTING EXTERIOR DOWNLIGHT. USE RETROFIT KIT FIXTURE TYPE "T".
 - 3 REPLACE EXISTING WALL BRACKET FIXTURE. USE FIXTURE TYPE "U".
 - 4 REPLACE EXISTING FIXTURES. USE FIXTURES TYPE "C1".
 - 5 EXISTING 2x4 SURFACE METAL SPEED FIXTURES WITH (4) REPLICATE BALLAST WITH RAPID START. LOW HARMONICS ELECTRONIC BALLAST. REPLACE LENS WITH KSH K12125 AGRICULTURE LENS.
 - 6 REPLACE EXISTING FIXTURE WITH NEW FIXTURE TYPE "C1".
 - 7 EXISTING FIXTURE TO REMAIN.



POWER / SIGNAL FLOOR PLAN BLDG. 100



KEY PLAN



Bakersfield
5500 mining avenue, suite 450, Bakersfield, ca 93309
661.836.4300 bakersfield.ca.93309
661.836.4311

San Jose
500 south first st., suite 200
san jose, ca 95113
408.824.9841
408.824.9844
for 408.824.9844

San Luis Obispo
4111 first street, suite 145
san luis obispo, ca 93401
805.463.6334
805.463.6334

Oakland
350 frank owsen plaza, suite 300
oakland, ca 94612
510.881.9274

Principal Architects
5000 m. highway 41a, c-3133
oakland, ca 94612
c-5134
milton r. kirkland, rita c-1829
c-1829

REGISTERED PROFESSIONAL ENGINEER
No. 510
08/19/06
JAMES W. GORDON
JAMES W. GORDON, Electrical Engineer
E.E. #5100
ESTABLISHED 1988

444 W. Fairbrook Ave., Suite 106
Fresno, California 93711
(559) 432-4490 / (559) 432-4592 fax

FILE NO. 15-6
IDENTIFICATION STAMP
DIV. OF THE STATE ARCHITECTS
02-106664
A.C. R.L. ZIV
DATE: AUG 28, 2003

MODERNIZATION
FOR
COLONEL HOWARD NICHOLS
SCHOOL
3401 RENEGADE AVE.
BAKERSFIELD, CA 93306
BAKERSFIELD CITY
SCHOOL DISTRICT

BUILDING 100 LIGHTING AND POWER / SIGNAL FLOOR PLANS

Version Date:	02-1-27	Version Title:	
Job no.:	02-1-27		
date:	06/24/03		
drawn by:	T.A.		
chkd by:	D.G.		
© copyright:	2003		

