

Bakersfield
5500 ming owner, suite 450, Bakersfield, ca 93309
661.856.4300
for 661.856.4311

San Jose
500 south first st., suite 200
san jose, ca 95113
408.424.9411
for 408.424.9444

San Luis Obispo
4115 bond street, suite 3-4
san luis obispo, ca 93401
505.563.5354
for 505.563.5354

Oakland
350 frank ogawa plaza, suite 300
oakland, ca 94612
510.871.6070
for 510.871.6271



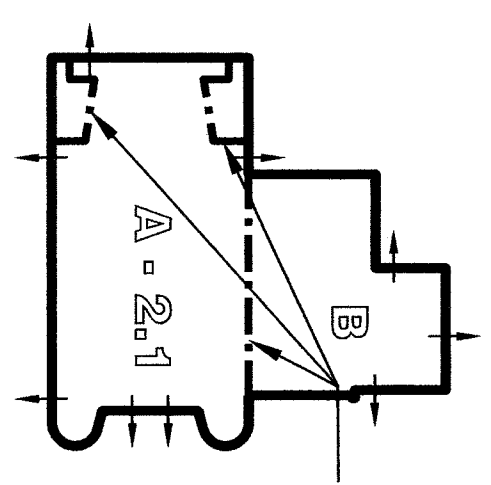
Principal Architects
c-9186
1000 north a street, suite 200
san jose, ca 95128
408.424.9411
c-41879
1000 north a street, suite 200
san jose, ca 95128
408.424.9411
c-41879

KEYNOTES

- NOTE: KEYNOTES IN THIS LIST MAY NOT NECESSARILY OCCUR ON THIS SHEET.
- 201 PROVIDE PLUMBING FIXTURE. REFER TO PLUMBING DRAWINGS.
 - 202 (E) FENCE TO REMAIN.
 - 203 LINE OF (E) ROOF ABOVE.
 - 204 REMOVE PORTION OF (E) CASEWORK. REFER TO INTERIOR ELEVATIONS.
 - 205 PROVIDE CASEWORK SHOWN HATCHED. REFER TO INTERIOR ELEVATIONS.
 - 206 REMOVE CASEWORK SHOWN HATCHED. REFER TO INTERIOR ELEVATIONS.
 - 207 PROVIDE COUNTERTOP SHOWN HATCHED.
 - 208 REPLACE WHEELCHAIR LIFT.
 - 209 REPLACE HANDRAIL REFER TO 1/A3.11 FOR DIMENSIONS.
 - 210 (E) CONCRETE RAMP TO REMAIN
 - 211 REPAINT ALL (E) WINDOWS.
 - 212 REMOVE AND REPLACE EXISTING WITH OBSCURE GLAZING NOT USED
 - 213 (E) FIRE EXTINGUISHER/CABINET TO REMAIN.
 - 214 REMOVE (E) OBSERVATION WINDOW AND REPAIR THE OPENING.
 - 215 REMOVE (E) OBSERVATION WINDOW AND REPAIR THE OPENING.
 - 216 REMOVE AND REPLACE (E) DISPLAY TRACK.
 - 217 PROVIDE 2" COMPRESSING CONCRETE AT TOP AND BOTTOM TRACK REFER TO DET. 23/A10.01
 - 218 PROVIDE 2" COMPRESSING CONCRETE AT EACH TRACK
 - 219 PROVIDE SIGN TO READ "NOT AN ACCESSIBLE EXIT" ABOVE DOOR REMOVE AND REPLACE DOOR FRAME AND HARDWARE. REFER TO DET. 23/A10.01
 - 221 REMOVE AND REPLACE DOOR FRAME AND HARDWARE. REFER TO DOOR SCHEDULE.

LEGEND

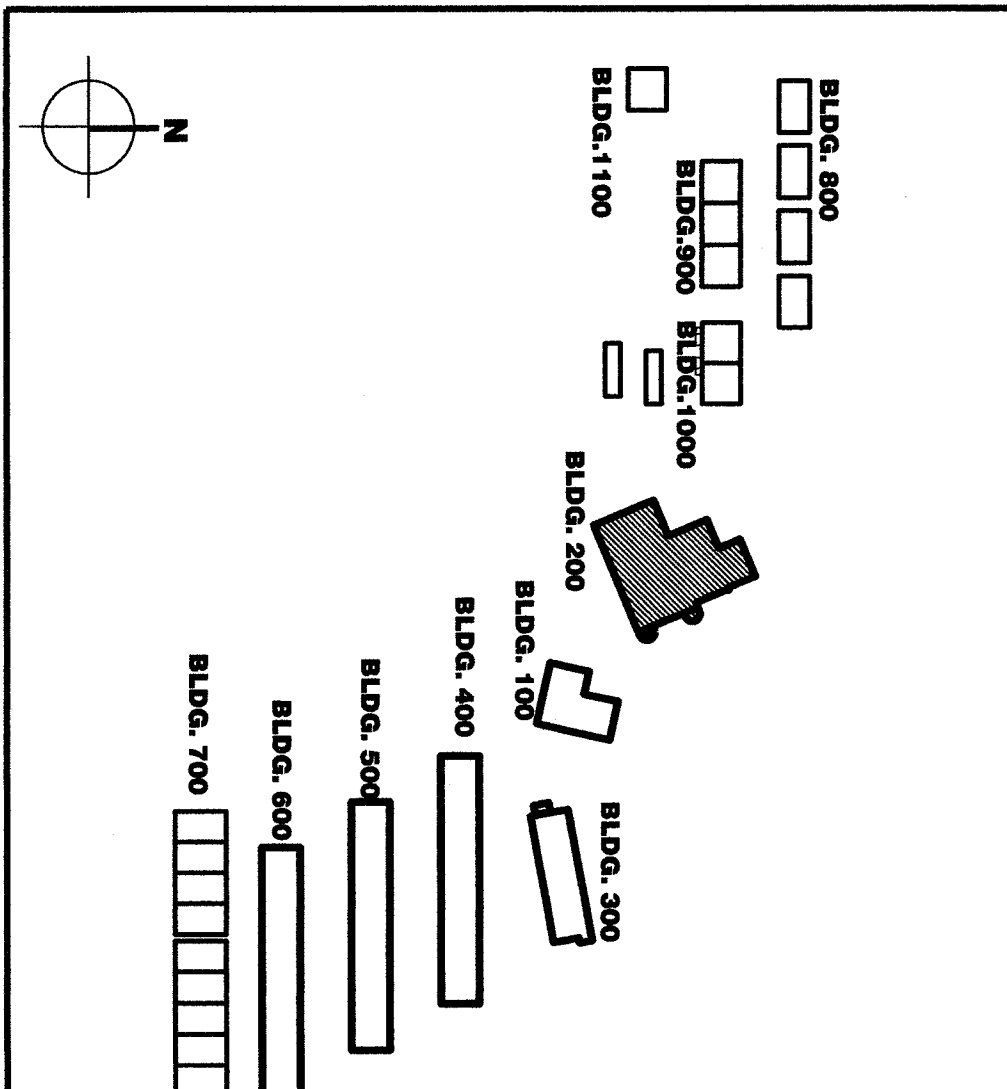
- NOTE: ALL SYMBOLS AND PATTERNS MAY NOT NECESSARILY OCCUR ON THIS SHEET.
- 2" STUD WALL / MTL WALL. SEE KEYNOTES FOR CONSTRUCTION INFORMATION. (REFER TO SHT. A10.01 FOR WALL TYPES. REFER TO DET. 8/A10.03 FOR INFILL OF EXISTING WALL OPENINGS)
 - 60-INCH ACCESSIBLE FLOOR SPACE LOCATION
 - 32-INCH X 48-INCH ACCESSIBLE FLOOR SPACE LOCATION
 - ONE HOUR WALL W/ 60 MIN. RATED OPENINGS PER CSP. SEC. 502.3 (OCCUPANCY SEPARATION)
 - SCOPE OF WORK
 - EXITS
 - ONE HOUR OCCUPANCY SEPARATION



FIRE-RESISTIVE REQUIREMENTS

- (TYPE V-1 HR IN ACCORDANCE W/ CBC TABLE 6A)
- BUILDING ELEMENT RATING CONSTRUCTION UL LISTINGS
- EXTERIOR BEARING 1 HR. (E) CMU CBC TABLE 7B (ITEM 6-1.1)
 - WALLS (E) CMU/(E) WD STUDS W/ GYP BD CBC TABLE 7B (ITEM 6-1.1)
 - INTERIOR BEARING 1 HR. (E) CMU/(E) WD STUDS W/ GYP BD CBC TABLE 7B (ITEM 6-1.1)
 - WALLS REFER TO SHEET A10.01
 - NON-BEARING 1 HR. (E) CMU
 - EXTERIOR WALLS (E) STRUCTURAL GLU-LAM CBC TABLE 7C
 - STRUCTURAL FRAME & (E) CONCRETE BEAMS (ITEM 6-1.1)
 - PARTITIONS- 1 HR. WD STUDS W/ GYP BD REFER TO SHEET A10.01
 - PERMANENT SHAFIT 1 HR. N/A
 - ENCLOSURES 1 HR. N/A
 - FLOORS & FLOOR/CeilINGS 1 HR. N/A
 - ROOF & ROOF/CeilINGS 1 HR. BUILT-UP RFG O/ PLYWD CBC TABLE 7C SHTG O/ 2X10 WD RAFTERS (Ø 24"OC)
 - EXT DOORS/ WINDOWS N/R HM FRAME & HM DOORS
 - STAIRWAY N/A
 - NON-CONSTRUCTION COMB. N/A

KEY PLAN



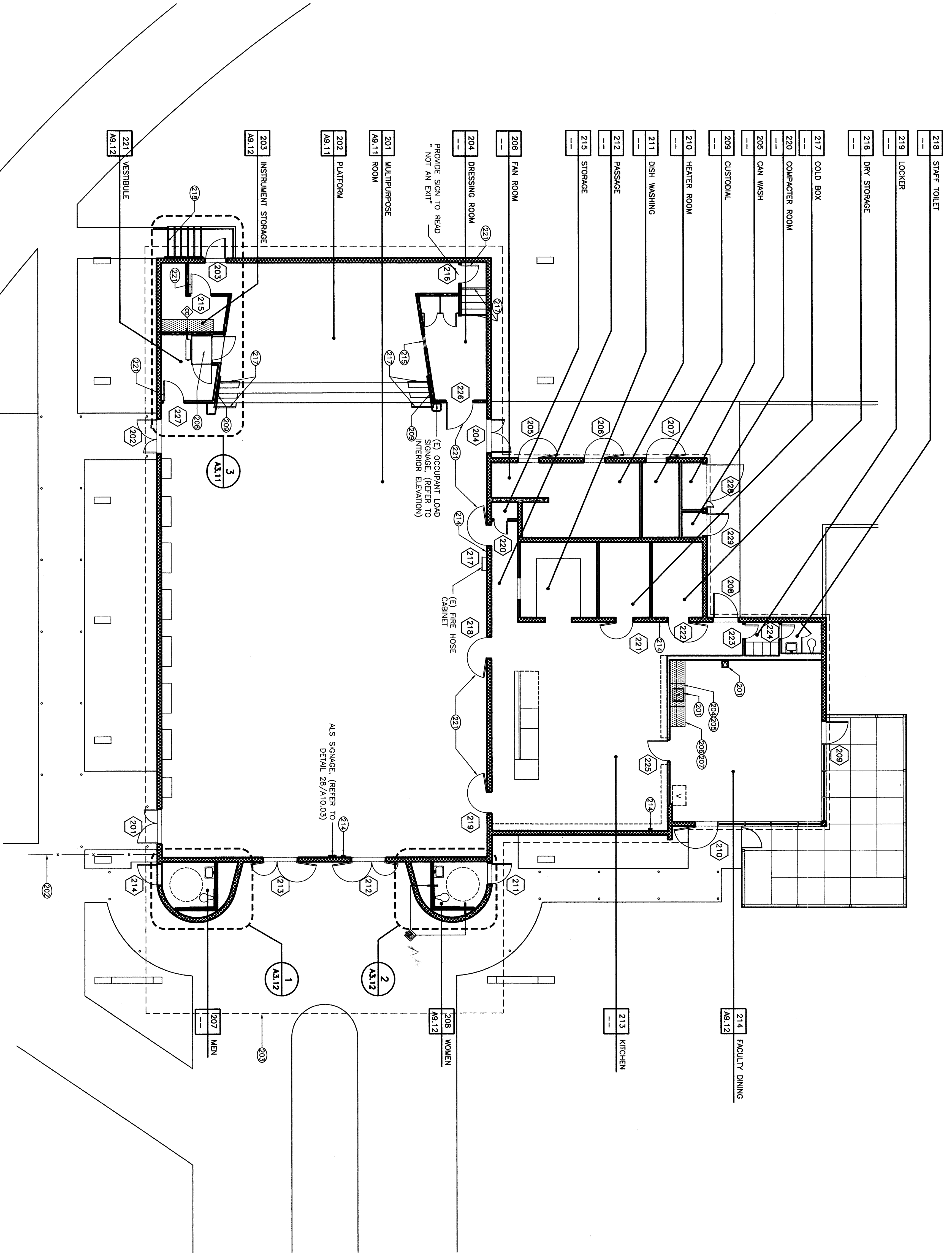
MODERNIZATION
FOR
COLONEL HOWARD NICHOLS
SCHOOL
3401 RENEGADE AVE.
BAKERSFIELD, CA. 93306

BAKERSFIELD CITY
SCHOOL DISTRICT

BUILDING 200
FLOOR PLAN

Version Code:	Version:
Job No. 02-127	02-127
date 8-28-03	8-28-03
drawn by DSEA1	DSEA1
chk'd by R. FROST	R. FROST
Copyright 2002	2002

BUILDING 200 FLOOR PLAN



Item (8)
#1 Refer to Architectural Drawings, Sheet A2.21 - Building 200 Floor Plan.
REVISE wall type to "A4" in lieu of "CC" for new walls at Women (209).

