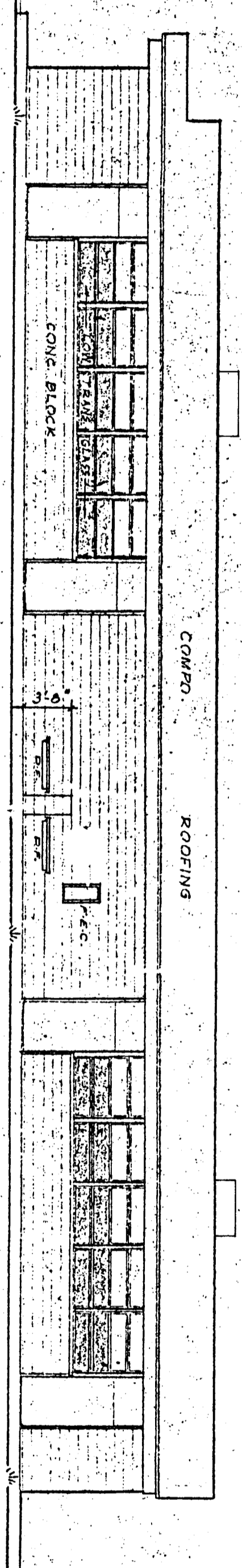
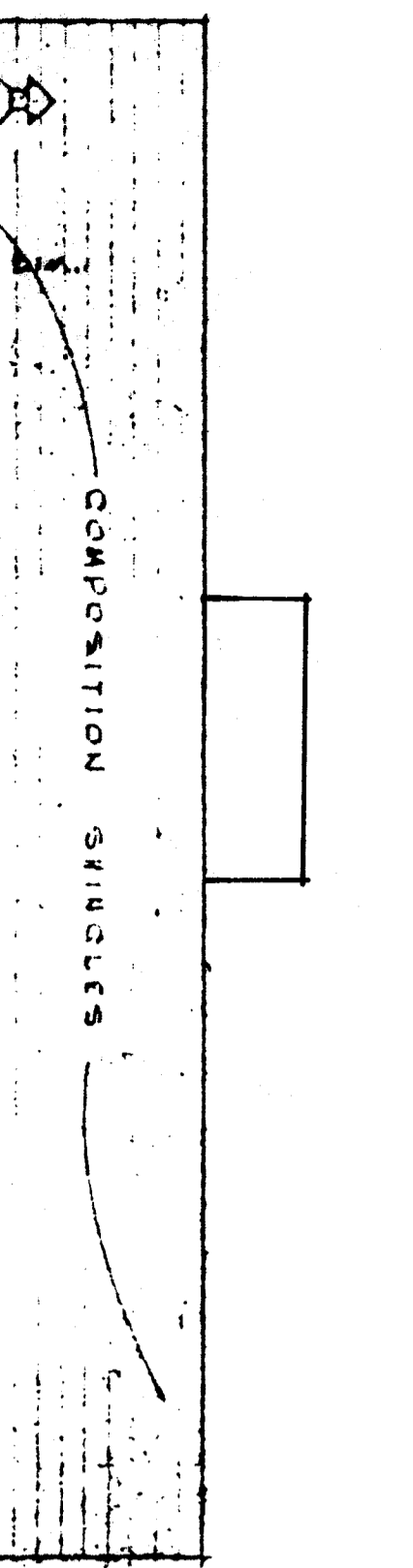
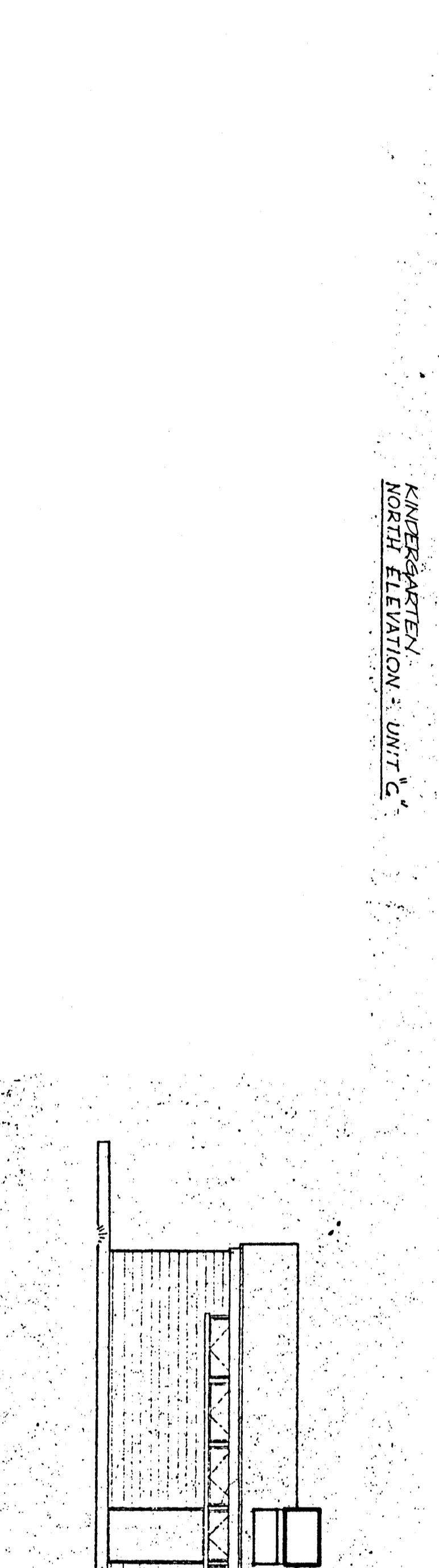
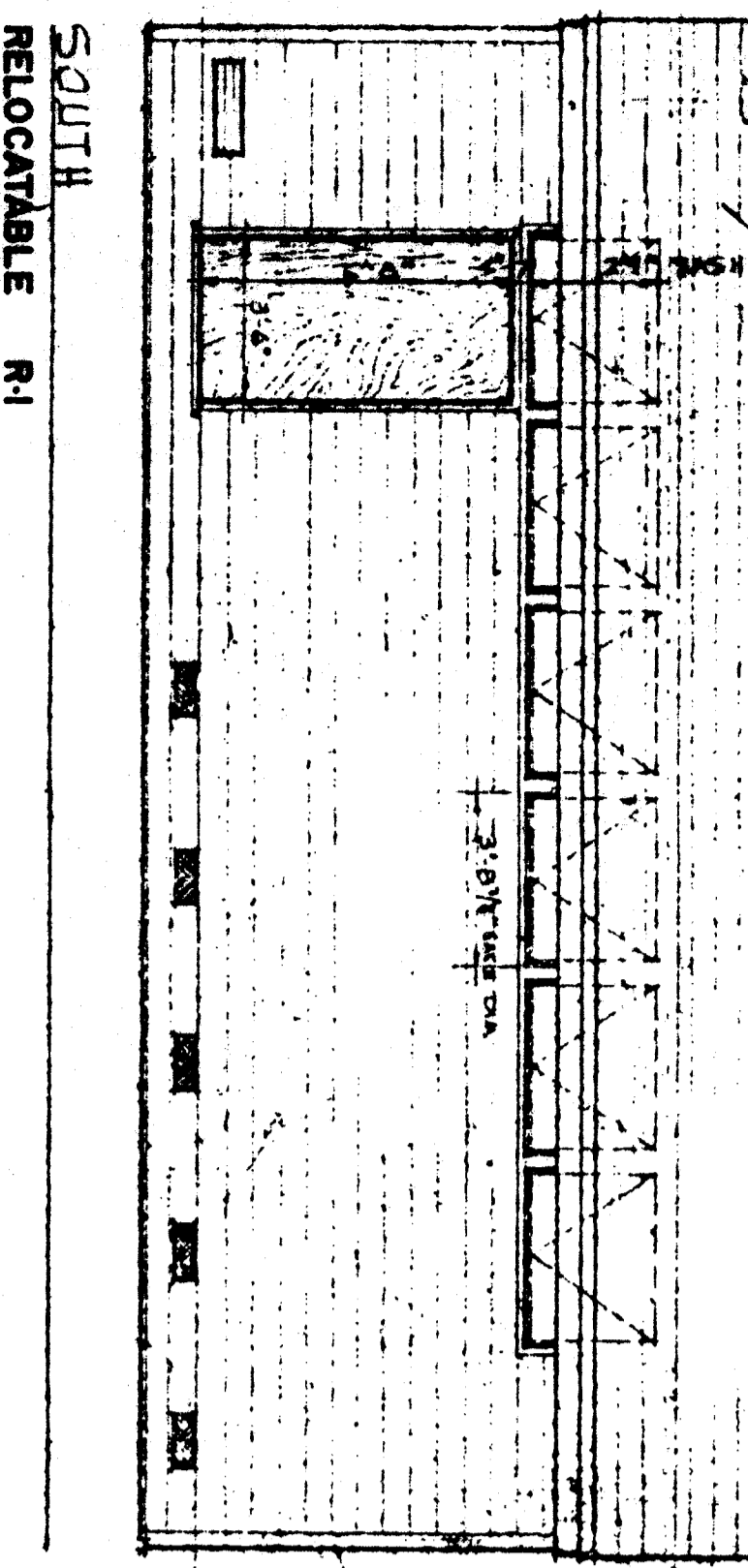


SECTION A-A

APPROVALS

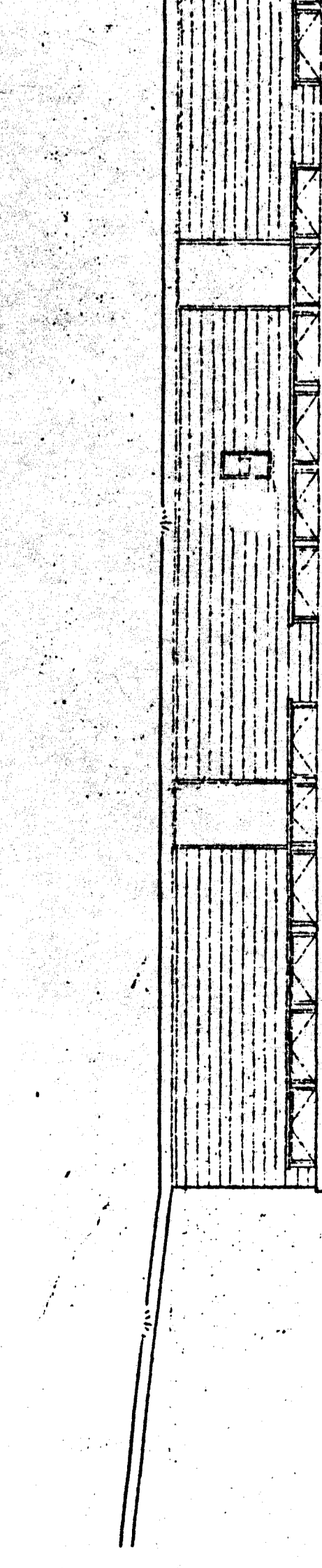
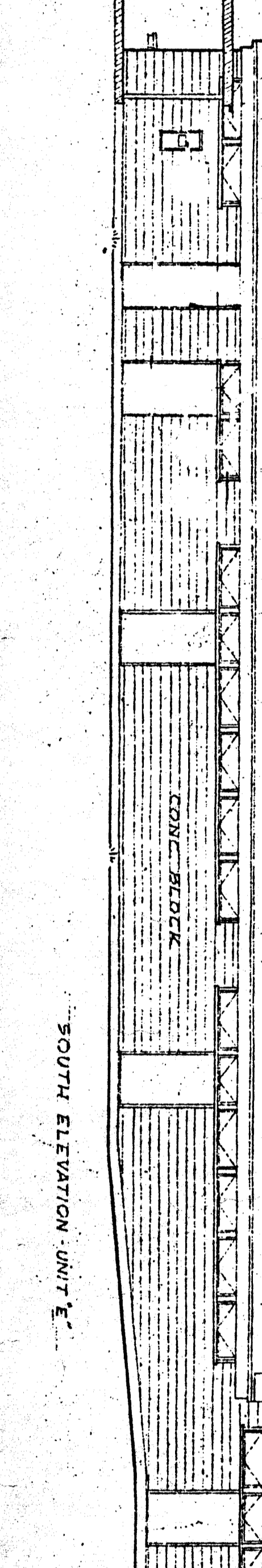
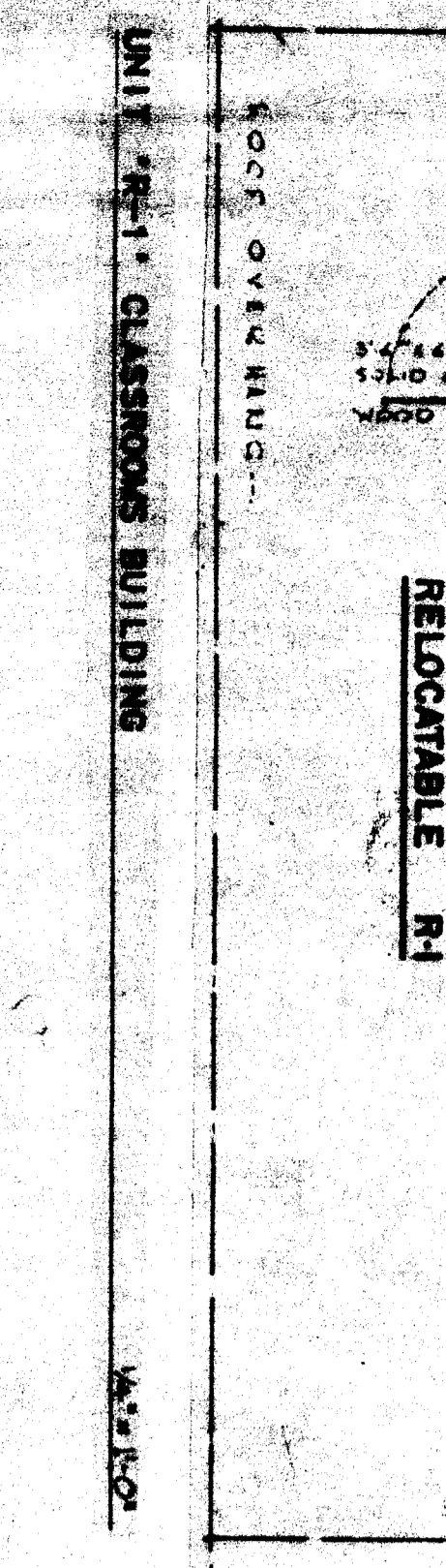
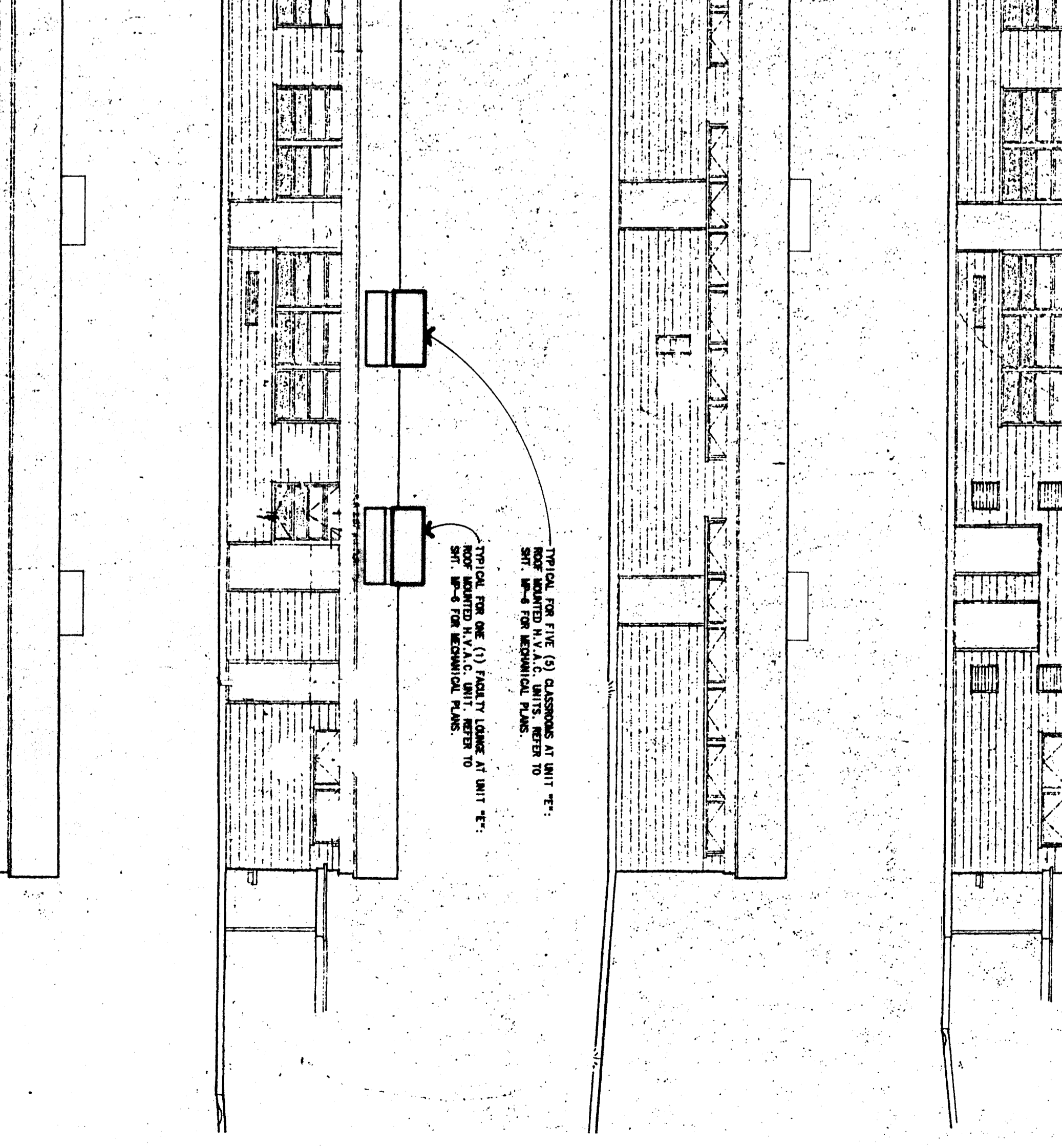
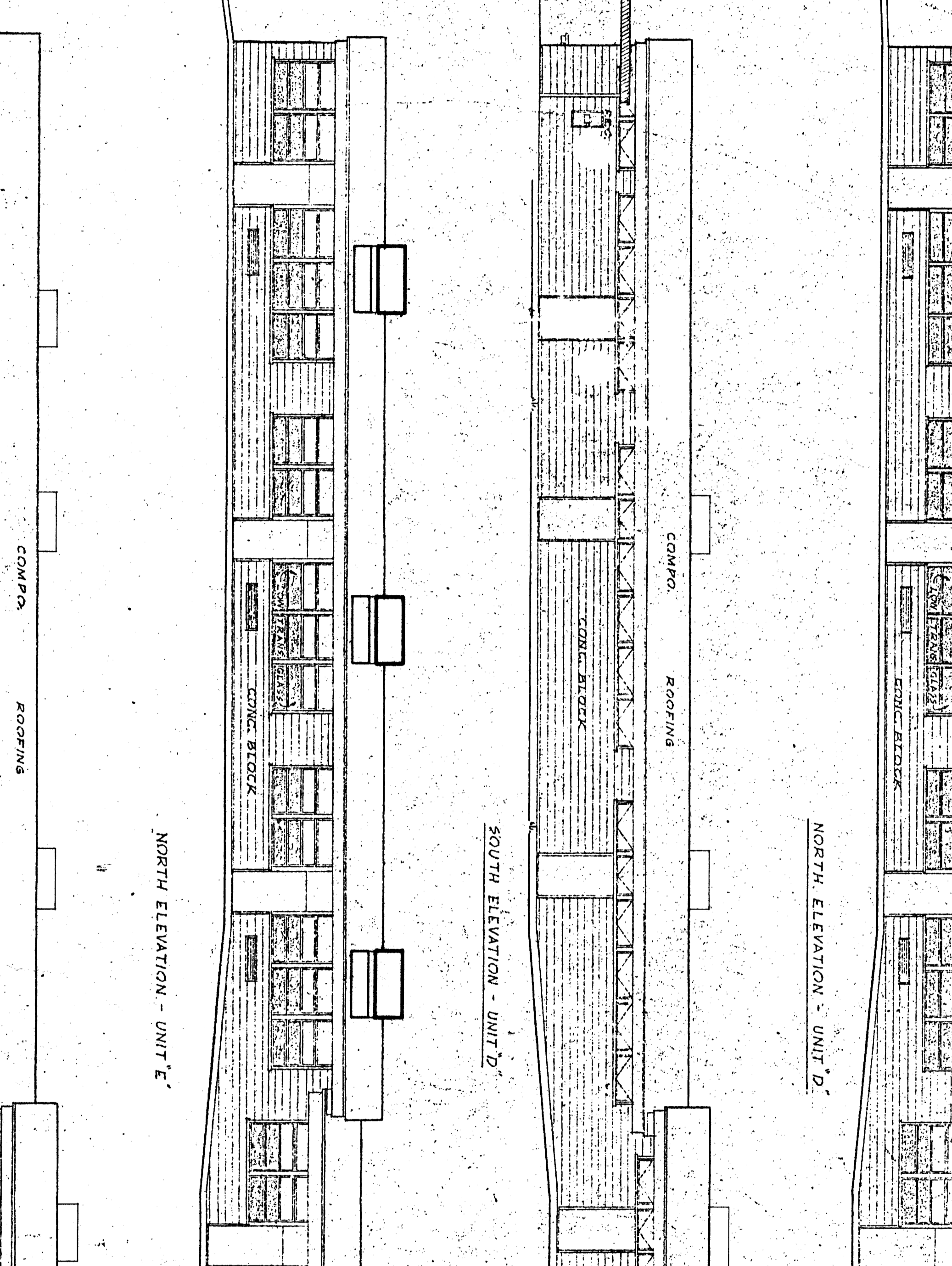
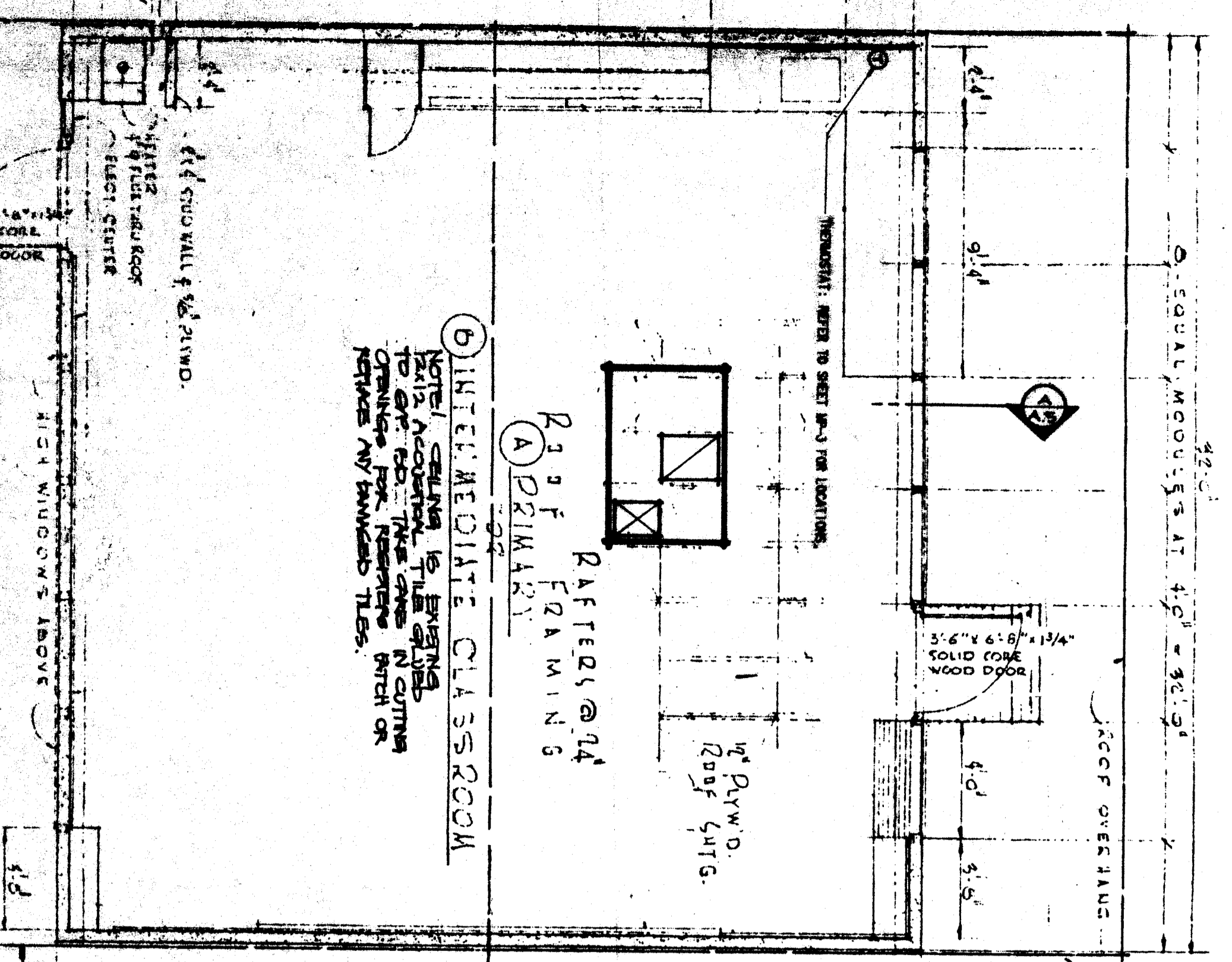


KINDERGARTEN NORTH ELEVATION - UNIT C



KINDERGARTEN SOUTH ELEVATION - UNIT C

TITLE BLOCK: BLDG. R-1 FLOOR PLAN & EXTERIOR ELEV. AND FRAMING SECTION
APR 4 1991
ARCHITECT: KLASSEN CORPORATION

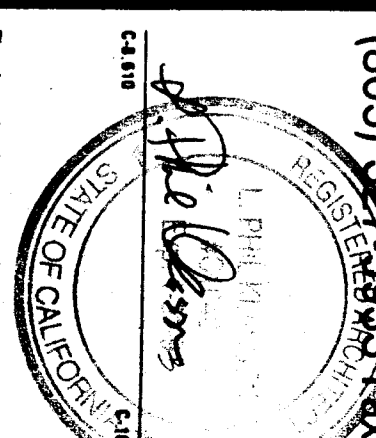


DATE: APRIL 4, 1991

BAKERSFIELD CITY SCHOOL DISTRICT
COLONEL HOWARD NICHOLS ELEMENTARY SCHOOL
MODERNIZATION PROJECT

SHEET TITLE: BUILDINGS C, D & E EXTERIOR ELEVATIONS, BLDG. R-1 FLOOR PLAN & EXTERIOR ELEV. AND FRAMING SECTION

COLONEL HOWARD NICHOLS ELEMENTARY SCHOOL
BLDG. R-1 FLOOR PLAN & EXTERIOR ELEVATIONS
BAKERSFIELD, CALIFORNIA



KLASSEN CORPORATION
Architecture
Planning
Construction
2021 Westwind Drive
Bakersfield, CA 93301
(805) 327-0875
(805) 327-5535 FAX

Scale: A.05
Date: APRIL 4, 1991