

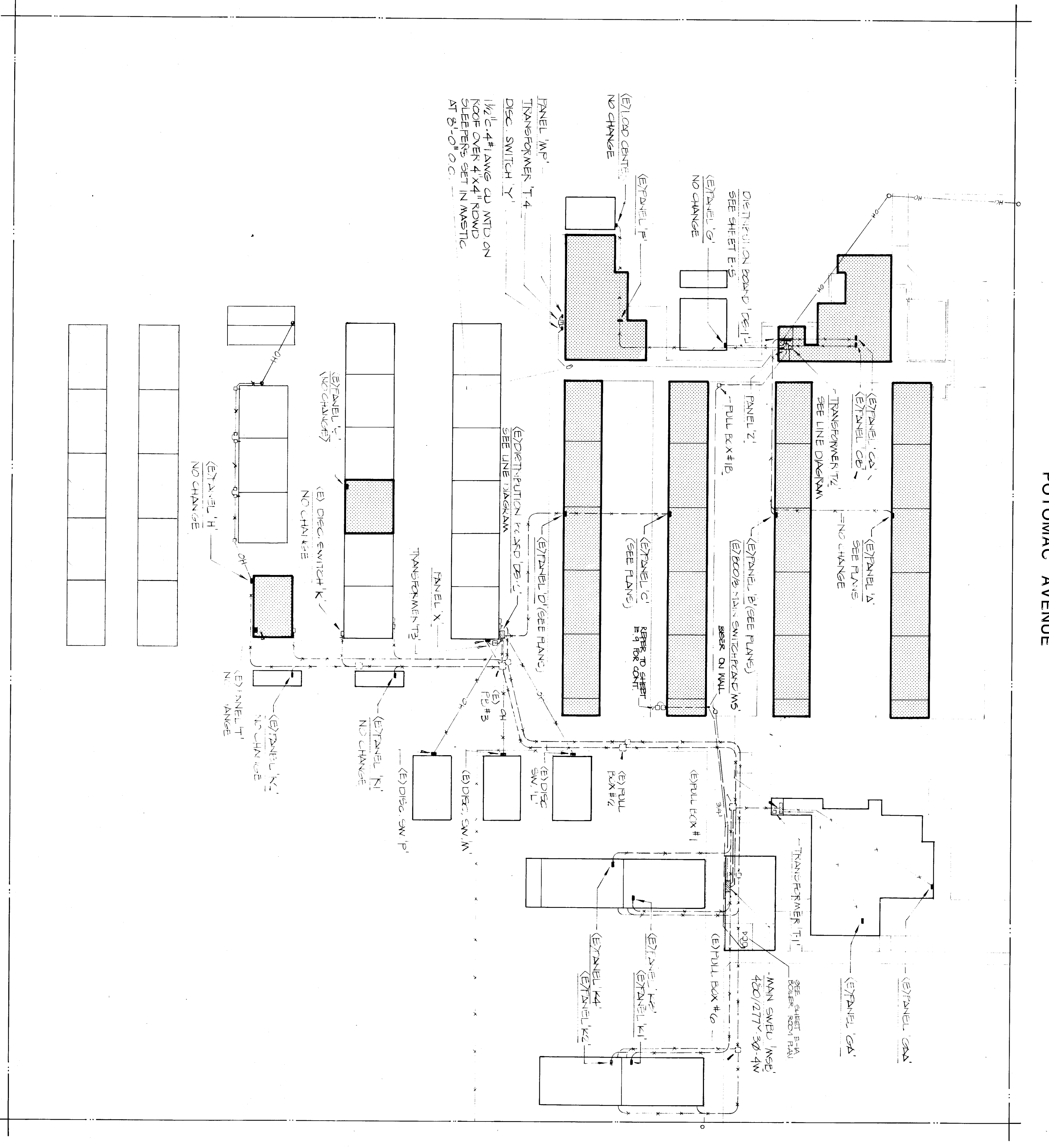
ALL MECHANICAL AND ELECTRICAL EQUIPMENT SHALL BE BRACED OR ANCHORED TO RESIST A HORIZONTAL FORCE ACTING IN ANY DIRECTION USING THE FOLLOWING CRITERIA:

FIXED EQUIPMENT ON GRADE	22% OF OPERATING WEIGHT
FIXED EQUIPMENT ON STRUCTURE	33% OF OPERATING WEIGHT
EMERGENCY POWER EQUIPMENT ON GRADE	50% OF OPERATING WEIGHT
EMERGENCY POWER EQUIPMENT ON STRUCTURE	50% OF OPERATING WEIGHT
FOR FLEXIBLY MOUNTED EQUIPMENT USE 2 X THE ABOVE VALUES.	
SIMULTANEOUS VERTICAL FORCE - USE 1/3 X HORIZONTAL FORCE.	

WHERE ANCHORAGE DETAILS ARE NOT SHOWN ON THE DRAWINGS FOR EQUIPMENT 500 POUNDS OR LESS THE FIELD INSTALLATION SHALL BE SUBJECT TO THE APPROVAL OF THE MECHANICAL AND ELECTRICAL ENGINEER AND THE FIELD REPRESENTATIVE OF THE OFFICE OF THE STATE ARCHITECT.

FIRE DETECTION SYSTEM NOTES:

1. ALL WIRING IS SHOWN DIAGNOSTICALLY. CONTRACTOR MAY VARY SEQUENCE OR CIRCUITRY, HOWEVER ALL CIRCUITS SHALL BE CONTINUOUS AND SUPERVISED FROM DEVICE TO DEVICE. ALL WIRING SHALL BE IN CONDUIT OR RACEWAY. ANY CONDUIT SHALL BE INSTALLED IN ACCORDANCE WITH THE NATIONAL ELECTRICAL CODE (NEC) AND THE CALIFORNIA ELECTRICAL CODE (CEC) AS SET FORTH IN THE CODES AND SECTION 91009 OF PART 2 OF TITLE 24 OF THE CALIFORNIA CODE OF REGULATIONS.
2. ALL CONDUCTORS SHALL BE PROPERLY LABELED BY CONDUCTOR AND SHALL HAVE STRAPPED LUG CONNECTORS.
3. PA TERMINAL CABINETS SHALL HAVE SUFFICIENT SPACE, TERMINAL BORDERS AND SPACING TO ACCOMMODATE ALL WIRING. ALL WIRING SHALL BE INSTALLED IN ACCORDANCE WITH THE NATIONAL ELECTRICAL CODE (NEC) AND THE CALIFORNIA ELECTRICAL CODE (CEC) AS SET FORTH IN THE CODES AND SECTION 91009 OF PART 2 OF TITLE 24 OF THE CALIFORNIA CODE OF REGULATIONS. ALL WIRING SHALL BE INSTALLED IN ACCORDANCE WITH THE NATIONAL ELECTRICAL CODE (NEC) AND THE CALIFORNIA ELECTRICAL CODE (CEC) AS SET FORTH IN THE CODES AND SECTION 91009 OF PART 2 OF TITLE 24 OF THE CALIFORNIA CODE OF REGULATIONS.
4. ALL CONDUCTORS SHALL BE #16 AWG. SOLID COPPER UNLESS OTHERWISE NOTED.
5. ALL WIRING IDENTIFICATION BY THE FIRE ALARM EQUIPMENT INSTALLATION (ON VENDOR OR MANUFACTURER) SHALL BE SUBMITTED TO THE ARCHITECT FOR REVIEW AND APPROVAL. THE ARCHITECT SHALL BE CONSULTED IN ALL RESPECTS TO THE REQUIREMENTS AS SET FORTH IN THE CODES AND SECTION 91009 OF PART 2 OF TITLE 24 OF THE CALIFORNIA CODE OF REGULATIONS.
6. INSTALLATION OF FIRE ALARM SYSTEMS SHALL NOT BE INTERFERED WITH. THE CONTRACTOR HAS SUBMITTED SHOP DRAWINGS AND INSTALLATION SYSTEM FOR REVIEW AND APPROVAL.

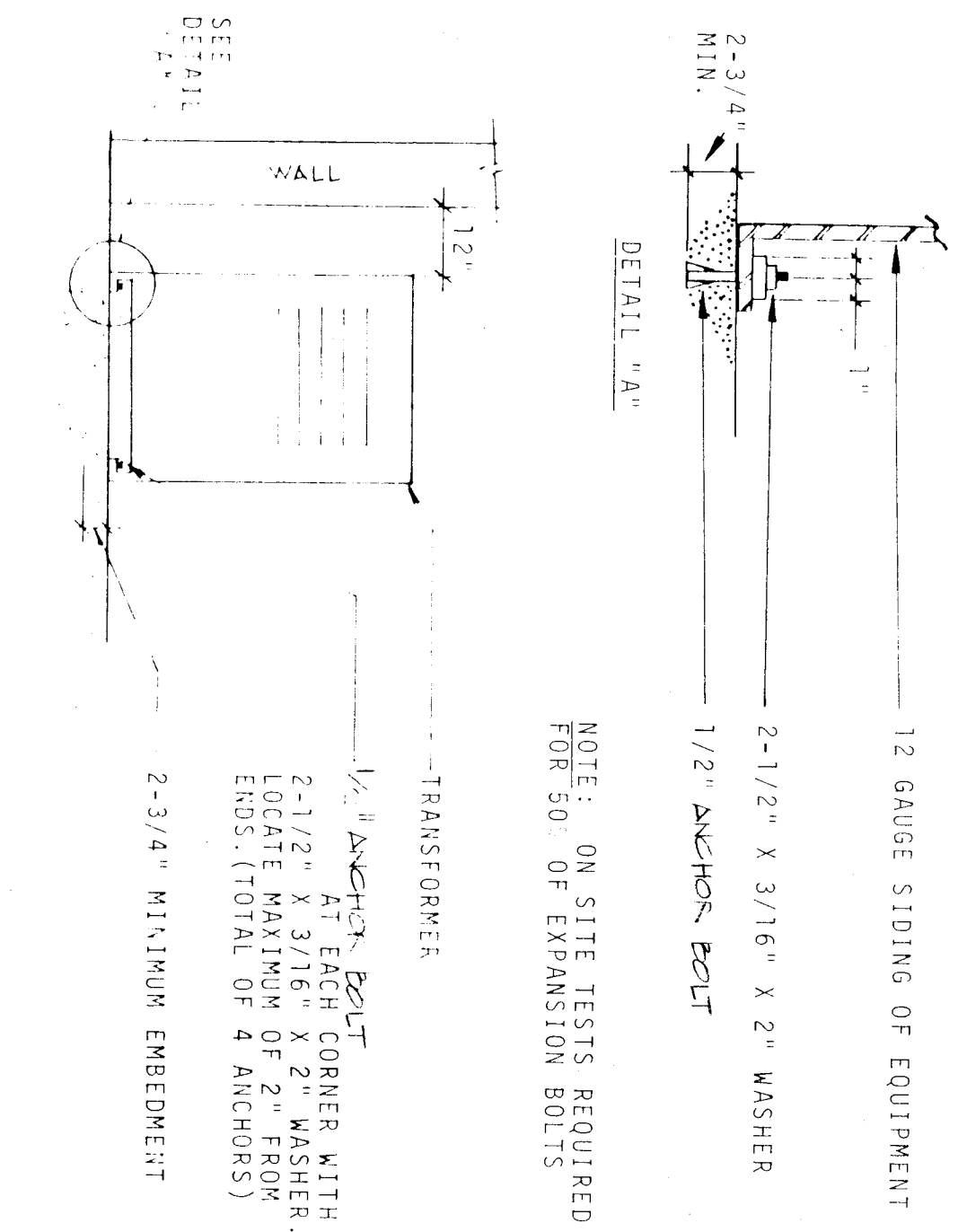
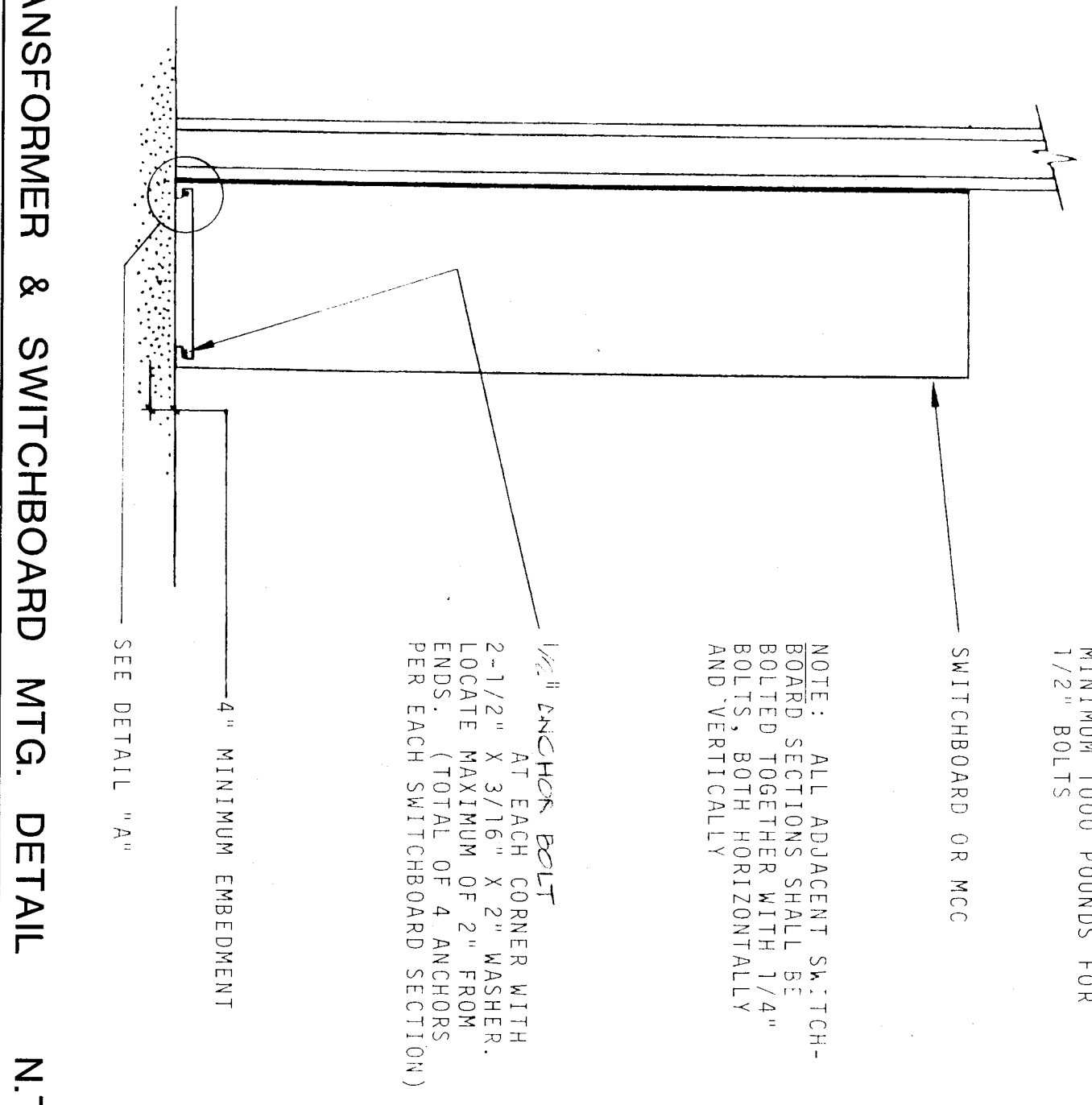


ELECTRICAL SITE PLAN

1" = 40.0'

UTILITY COMPANY: RGE & CO.  
 UTILITY CO. JOB REF. NO.:  
 TELEPHONE NO.: 205-370-5145  
 ADDRESS: 1101 H STREET  
 BAKERSFIELD CALIF. 93301  
 CONTRACTOR: MR. TOM ADULAK

TRANSFORMER & SWITCHBOARD MTG. DETAIL N.T.S.



NOTE: ON SITE TESTS REQUIRED FOR 50' OF EXPANSION BOLTS

SYMBOL	DESCRIPTION	REMARKS
☐	FLUORESCENT FIXTURE	SEE PLAN & FIXTURE SCHEDULE
☐	RECESSED FIXTURE	SEE PLAN & FIXTURE SCHEDULE
☐	WALL BRACKET FIXTURE	SEE PLAN & FIXTURE SCHEDULE
☐	EXIT LIGHT FIXTURE	SEE PLAN & FIXTURE SCHEDULE
☐	PORCELAIN RECEPTACLE	SEE PLAN & FIXTURE SCHEDULE
☐	LOCAL SWITCH MTD. @ 48" MAX.	20 A - AC QUIET 277V
☐	3-WAY SWITCH MTD. @ 48" MAX.	NEON IN HANDLE MTD. @ 48" MAX.
☐	SWITCH WITH PILOT LITE	20 A - AC QUIET 277V
☐	FIXTURE TO LOCAL SWITCH & SWITCH MTD. @ 48" MAX.	SEE FIXTURE SCHEDULE
☐	FIXTURE TYPE AND WATTAGE	REFER TO MECHANICAL DRAWINGS
☐	DEMOTES MECHANICAL EQUIP.	20 A NEMA GROUNDED MTD. @ 12" MIN.
☐	DUPLEX CONV. OUTLET	20 A NEMA GROUNDED MTD. @ 12" MIN.
☐	4-BOX AS REQUIRED	45 BOX & FLUSH PLATE MIN.
☐	TELEPHONE OUTLET	AS REQUIRED, MINIMUM 1" CONDUIT
☐	DEMOTES EXISTING ITEM	
☐	DEMOTES NEW ITEM	
☐	(N) SIGNAL RACEWAY	UNLESS OTHERWISE NOTED
☐	(N) WIRING IN FLOOR OR WALL	UNLESS OTHERWISE NOTED
☐	L.T.G. CONTROL & OUTPUT MODULES	HONEYWELL #EL7120 AND #EL7000
☐	SWITCHPACK	LIGHT-O-MATIC #13-011
☐	MOTION DETECTOR	LIGHT-O-MATIC #01093
☐	LIGHT SENSOR	HONEYWELL #EL7020
☐	SURFACE MTD. METAL RACEWAY	SEE PLANS & REF. NOTES
☐	(E) WIRING	
☐	(E) LIGHTING OUTLET	
☐	(E) LIGHT SWITCH	
☐	(E) DUPLEX OUTLET	
☐	(E) THERMOSTAT	
☐	DISCONNECT SWITCH	
☐	ELECTRICAL PANEL	
☐	TERMINAL CABINET	
☐	GROUND FAULT INTERRUPTING	
☐	WEATHERPROOF	
☐	FIRE ALARM FLASHING LITE	PROTECTIONS #V330 WITH #6N003
☐	HORN AND FLASHING LITE	PROTECTIONS #V330 WITH #6N003
☐	MOUNTED @ +84"	CSFM #7300-087239
☐	MOUNTED @ +84"	CSFM #7355-087207/200-067139
☐	IONIZATION SMOKE DETECTOR	PROTECTIONS #0131/0835
☐	HEAT DETECTOR, FIXED TEMP. IN ATTIC	PROTECTIONS #01200F
☐	MANUAL PULL STATION	CSFM #7270-087110
☐	MOUNTED @ +48"	PROTECTIONS #MS-51
☐	ZONE NUMBER - DEVICE NUMBER	CSFM #7150-087136
☐	END OF LINE DEVICE	
☐	HEAT DETECTOR, RATE OF RISE	PROTECTIONS #0113R
☐	FIRE ALARM CONTROL PANEL	PROTECTIONS SYSTEM 3 CSFM #7155-087235 PROVIDE SEPARATE 20A CIRCUIT

EXP. LOG. TESTS FOR EXPANSION TYPE ANCHOR BOLTS (BOLTS MUST HAVE I.C.B.O. APPROVAL)

ALL CONCRETE ANCHOR BOLTS OF THE EXPANSION TYPE (LOADED IN EITHER PULL OR TENSION) SHALL BE PROOF TESTED IN TENSION TO 1.25 TIMES THE ALLOWABLE TENSION LOAD. IF THERE ARE ANY FAILURES THE IMMEDIATELY ADJACENT BOLTS MUST THEN ALSO BE TESTED.

TYPE OF	TYPE OF TEST	BOLT DIAMETER
ANCHOR	DIRECT PULL-TENSION, LBS.	3/8" 1/2" 5/8" 3/4"
CONCRETE	TORSION MECH.-TORSION, LBS.	1300 2000 2900 4355
L.T. MTD.	DIRECT PULL-TENSION, LBS.	25 50 110 180
CONCRETE	TORSION MECH.-TORSION, LBS.	970 1400 1950 2555
		20 35 75 90

APPLICATION NO. 77/50602

ELEC. SITE PLAN SYMBOL SCHEDULE GENERAL NOTES & DETAILS  
**MT. VERNON MODERNIZATION**  
 BAKERSFIELD CITY SCHOOL DISTRICT  
 BAKERSFIELD, CALIFORNIA 93307

87-126  
 1 FEB. 1989

