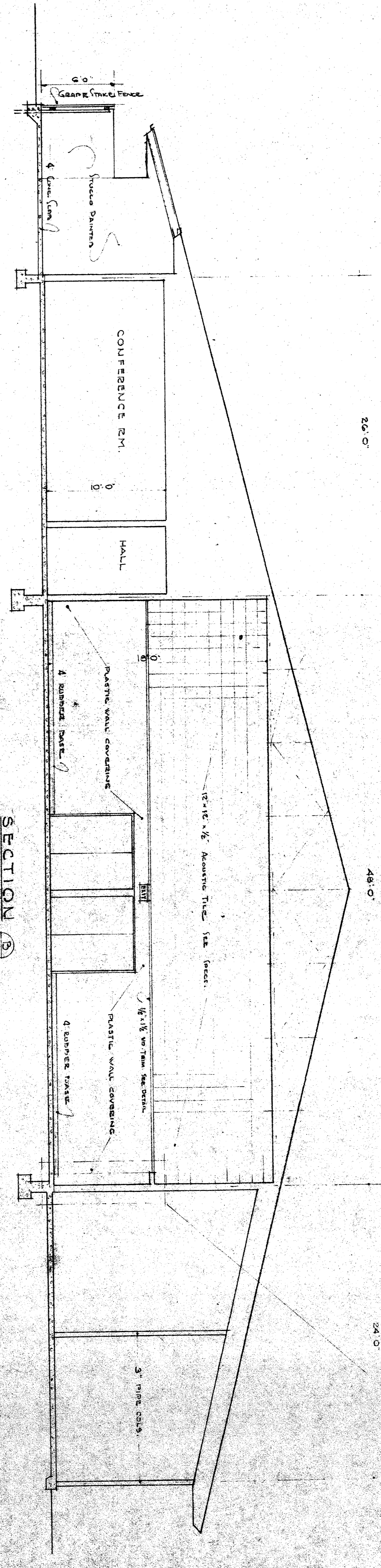
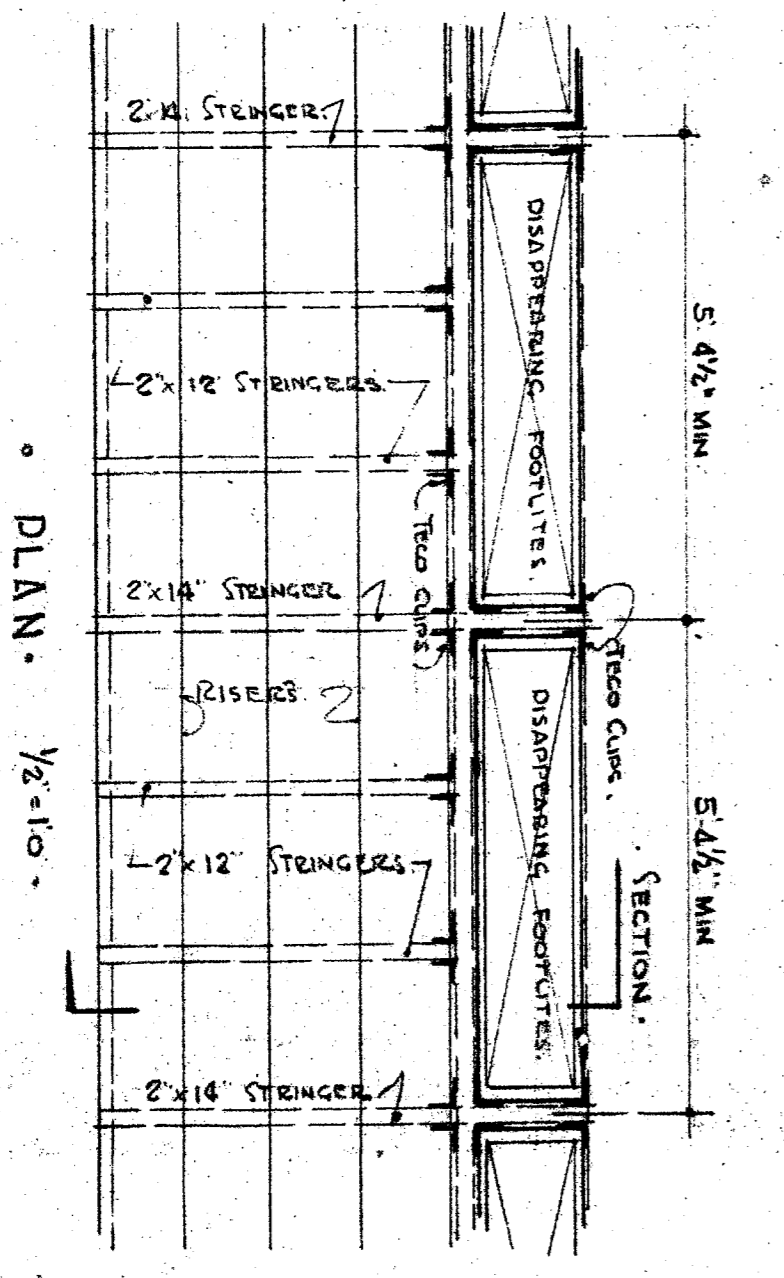


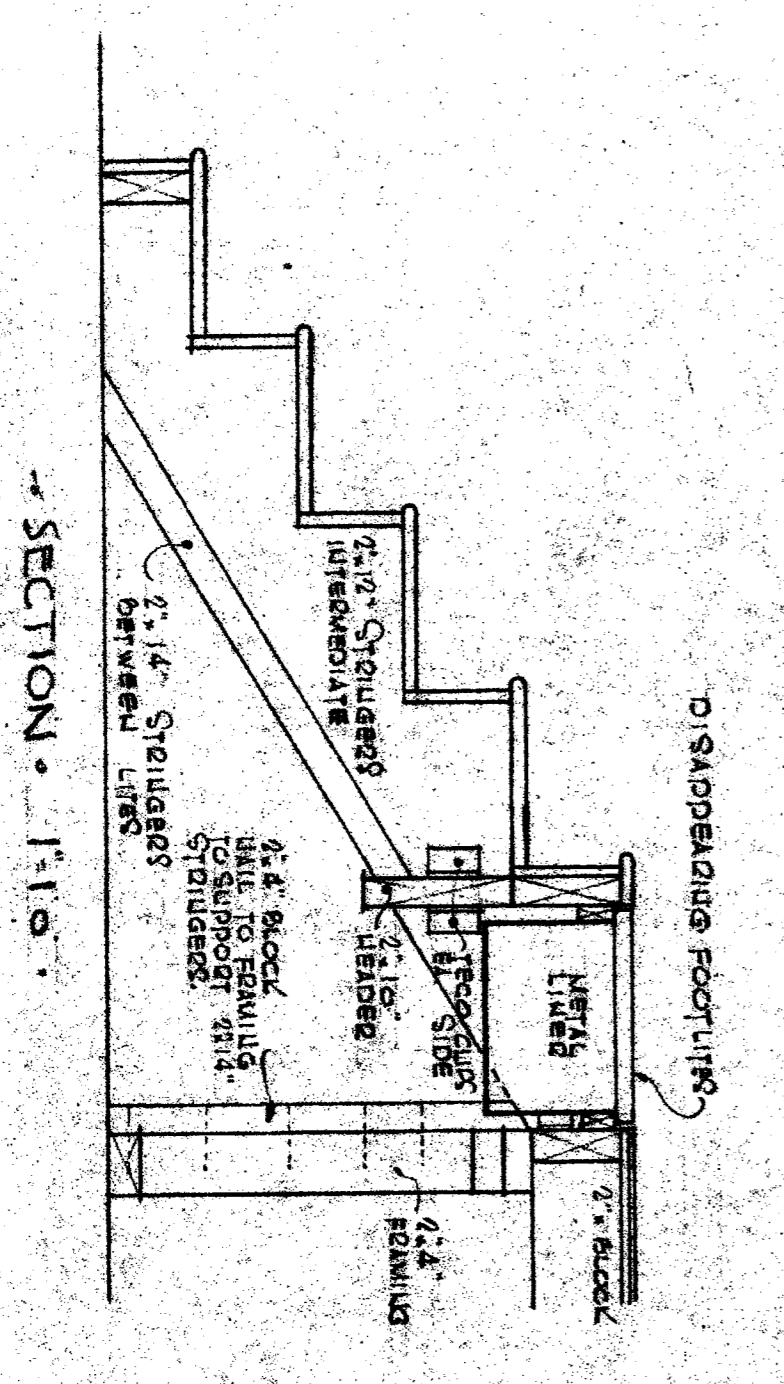
SECTION A
SCALE 1/4" = 1'-0"



SECTION B
SCALE 1/4" = 1'-0"



PLAN 1/2" = 1'-0"



SECTION C 1" = 1'-0"

NOTE-1
PLASTER UNDER PLASTIC WALL COVERING SHALL BE SMOOTH FINISH

APPROVED BY
BOARD OF EDUCATION
DAVERSFIELD CITY SCHOOL DISTRICT
DATE: *10/13/77*
BY: *John S. Gardner*
SUPERINTENDENT OF SCHOOLS AND EXECUTIVE OFFICER

STATE OF CALIFORNIA - DEPARTMENT OF PUBLIC WORKS
DIVISION OF ENGINEERING
19177 APPROVED SEP 15 1989
BY: *[Signature]*

SECTIONS:
MULTI PURPOSE ROOM,
MT VERNON SCHOOL,
DAVERSFIELD CITY SCHOOL DISTRICT

C. Barton Alford
c. barton alford
ARCHITECT
554 CALIFORNIA AVENUE
DAVERSFIELD, CALIFORNIA

ALA
AIA