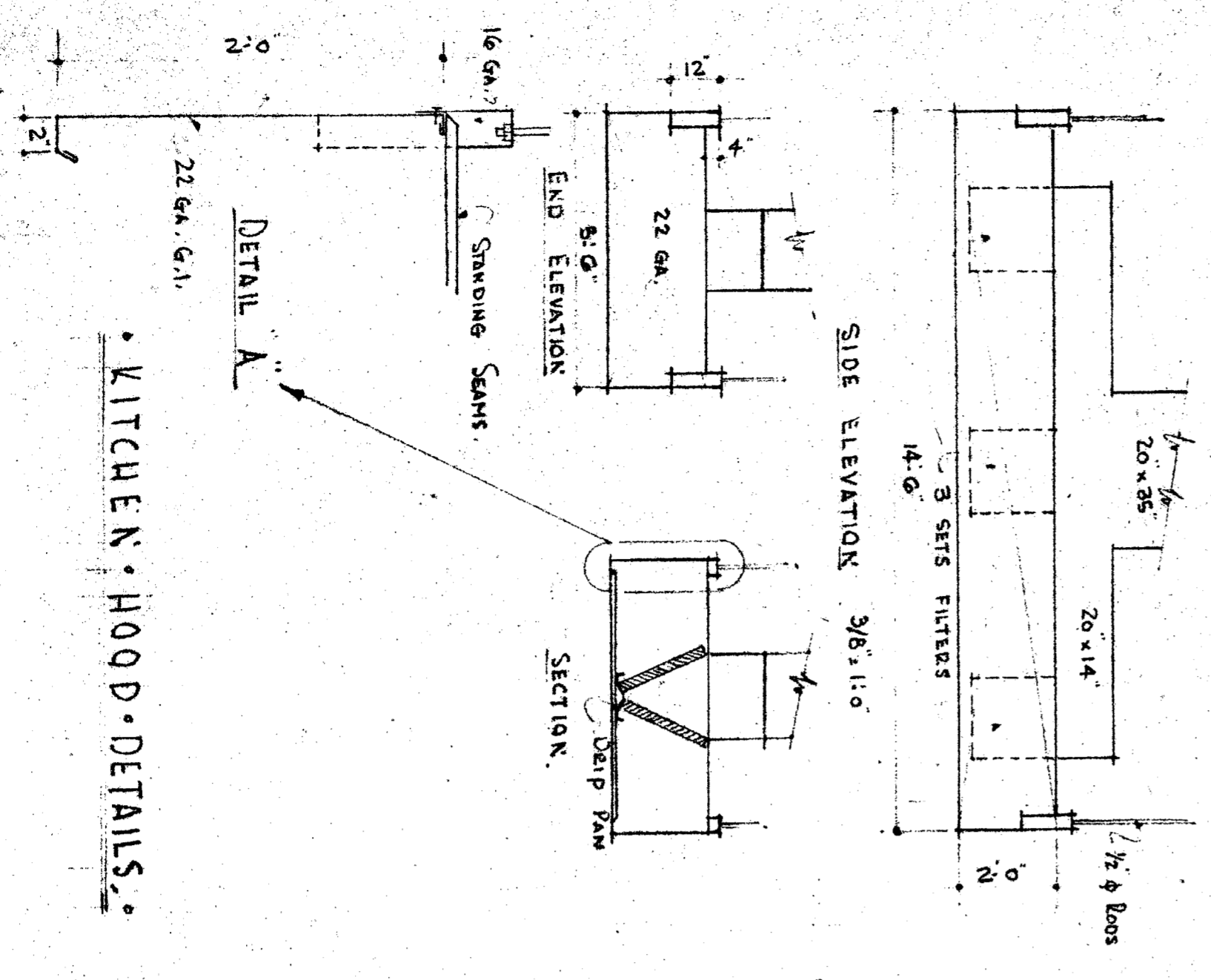
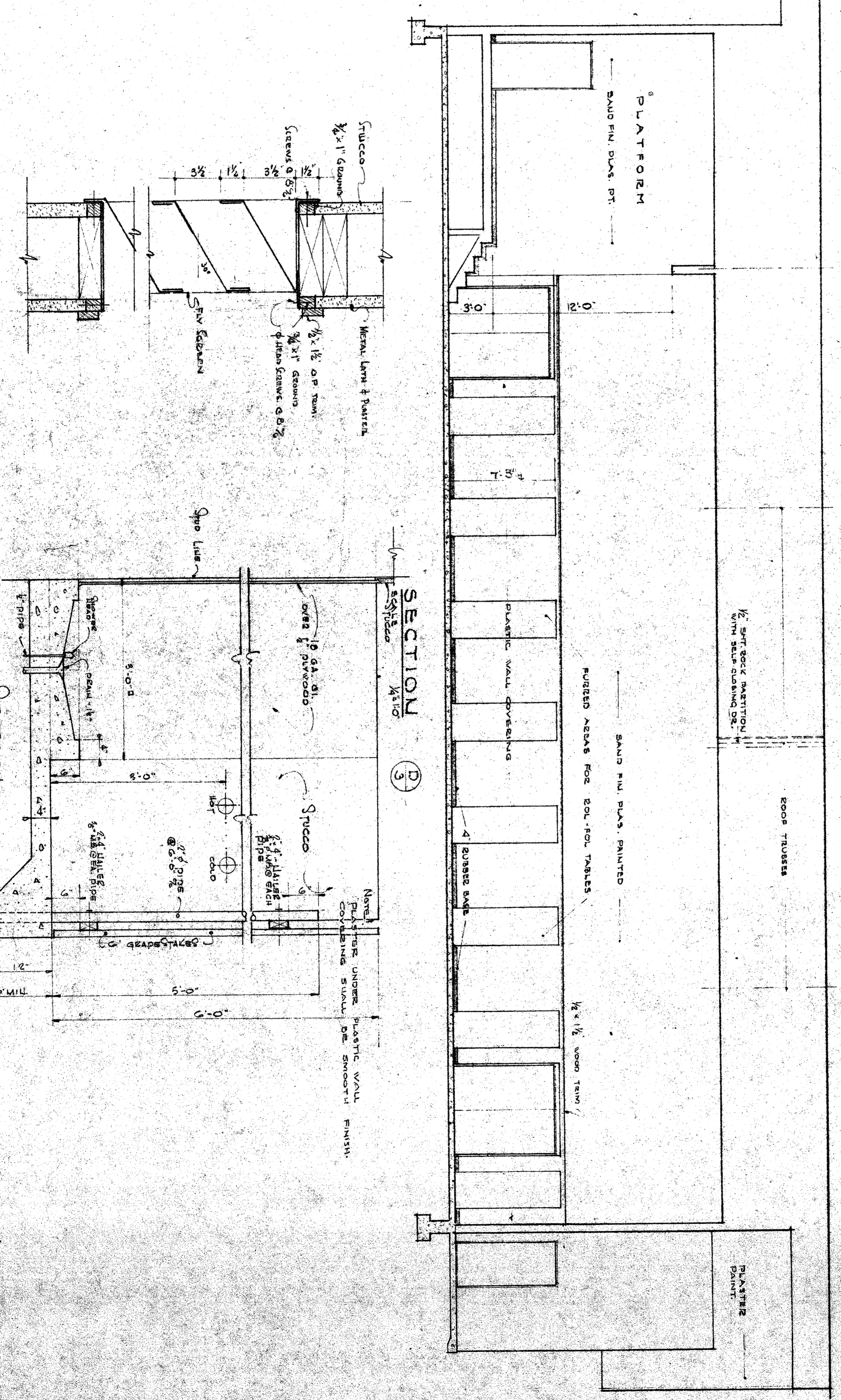


SECTION 3
SCALE 1/4"=1'-0"



KITCHEN HOOD DETAILS



SECTION D
SCALE 1/4"=1'-0"

SECTION 9

APPROVED BY
BOARD OF EDUCATION
Bakersfield City School District
DATE: 9/28/59
BY: Alan A. Compton
SUPERVISOR OF SCHOOLS AND
SCHOOL DISTRICT

STAFF OF ARCHITECT
19177 APPROVED 5/13/59
DATE: 5/13/59
BY: [Signature]
ARCHITECT

SECTIONS:
MULTI PURPOSE ROOM
MT. VERNON SCHOOL
Bakersfield City School District

C. Barton Alford
A. R. C. H. I. T. E. C. T.
1516 CALIFORNIA AVENUE
BAKERSFIELD, CALIFORNIA

