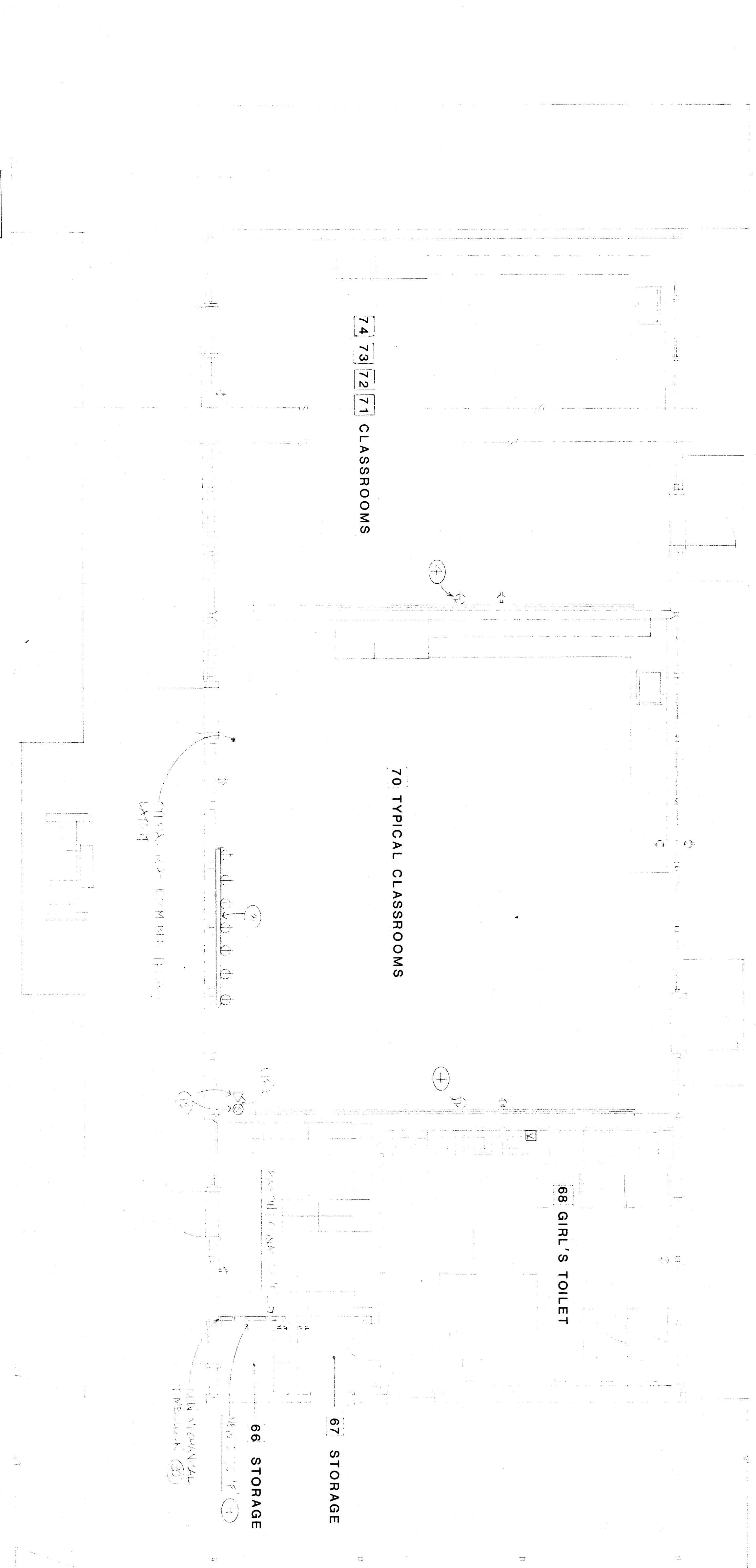
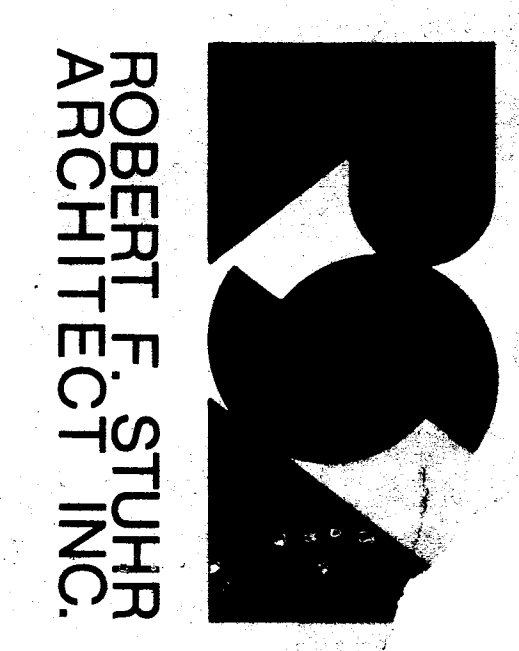
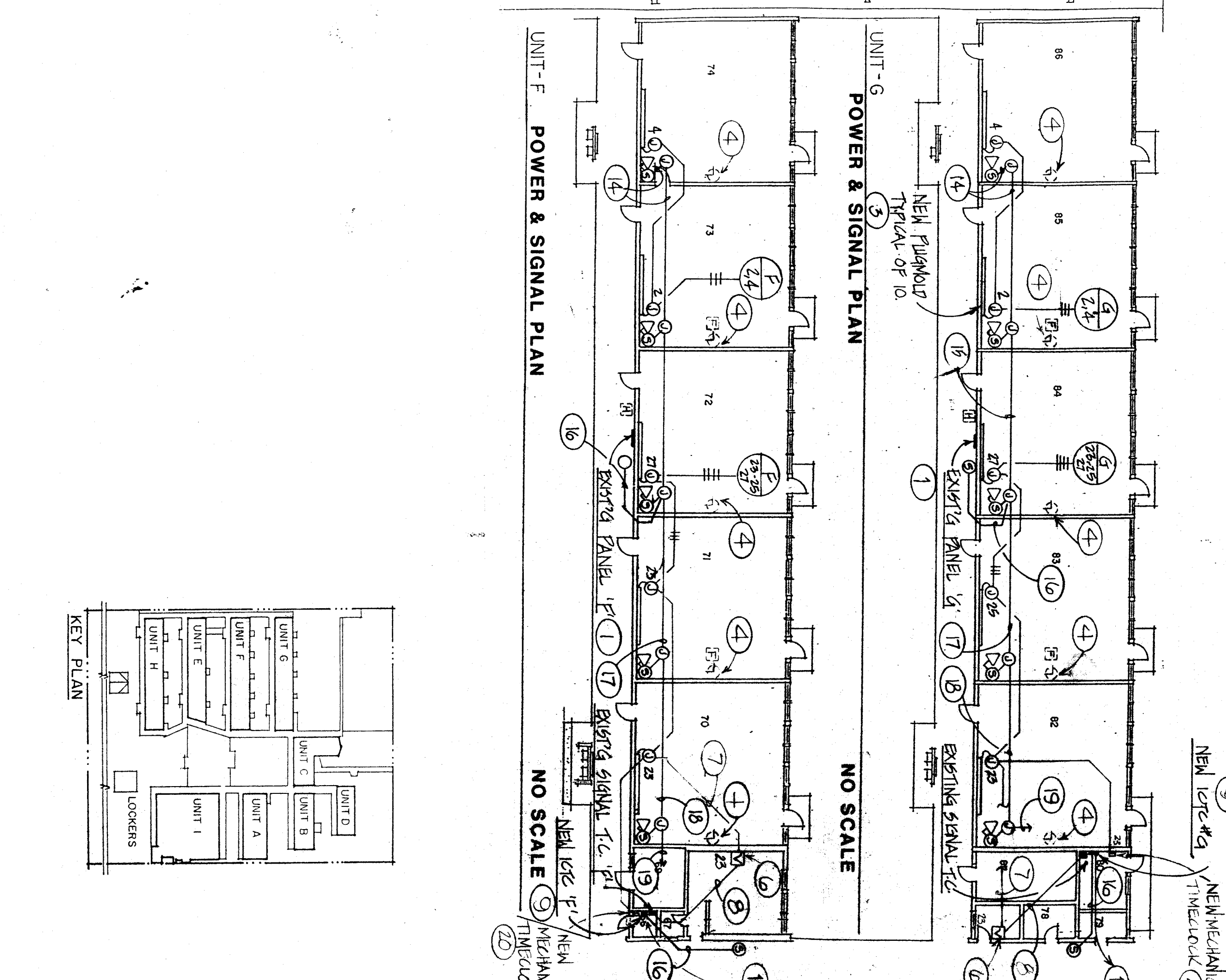


UNIT G POWER & SIGNAL PLAN
1/4" = 1'-0"
(REFER TO LARGE SCALE PLAN ON RIGHT FOR POWER, FIRE ALARM & INTERCOM WIRING)



UNIT F POWER & SIGNAL PLAN
1/4" = 1'-0"
(REFER TO LARGE SCALE PLAN ON RIGHT FOR POWER, FIRE ALARM & INTERCOM WIRING)

- TITLE 24 & ELEC. & MECH. CODES:**
- 1) REPAIR EXISTING PANEL, 120/240V 3P 4W, 25A 4-CONDUCTOR WITH 200A MAIN BREAKER, PROVIDE FOR BRANCH CIRCUITS (120, 200/125 BREAKERS, ONE 200A 2P BREAKERS, 120/240V 3P 4W, 25A, 4W, 2P, 3P, 4P, 200A, 2P, 3P, 4P)
 - 2) EXISTING RECEPTACLES AND WIRING TO REMAIN, TYPICAL.
 - 3) PROVIDE NEW 120VAC FUSE ALARM VISUAL ALARM ALONG WITH LINE WORK CENTER AS INDICATED. WIRING SHALL BE 10' LONG CONDUIT WITH END CAPS AND 1/2" DIA. AS INDICATED BY ARCHITECT TO BRIDGE ALARMER.
 - 4) REMOVE EXISTING COCK, DISCONNECT AND CAP EXISTING COCK. WIRING: RECONNECT EXISTING FIRE ALARM WIRING IN SAME BOX. INSTALL NEW BATTERY PROVIDING 24VDC POWER.
 - 5) REMOVE EXISTING FIRE ALARM WIRING IN SAME BOX. INSTALL NEW BATTERY PROVIDING 24VDC POWER.
 - 6) REMOVE EXISTING FIRE ALARM WIRING IN SAME BOX. INSTALL NEW BATTERY PROVIDING 24VDC POWER.
 - 7) REMOVE EXISTING FIRE ALARM WIRING IN SAME BOX. INSTALL NEW BATTERY PROVIDING 24VDC POWER.
 - 8) REMOVE EXISTING FIRE ALARM WIRING IN SAME BOX. INSTALL NEW BATTERY PROVIDING 24VDC POWER.
 - 9) REMOVE EXISTING FIRE ALARM WIRING IN SAME BOX. INSTALL NEW BATTERY PROVIDING 24VDC POWER.
 - 10) REMOVE EXISTING FIRE ALARM WIRING IN SAME BOX. INSTALL NEW BATTERY PROVIDING 24VDC POWER.
 - 11) REMOVE EXISTING FIRE ALARM WIRING IN SAME BOX. INSTALL NEW BATTERY PROVIDING 24VDC POWER.
 - 12) REMOVE EXISTING FIRE ALARM WIRING IN SAME BOX. INSTALL NEW BATTERY PROVIDING 24VDC POWER.
 - 13) REMOVE EXISTING FIRE ALARM WIRING IN SAME BOX. INSTALL NEW BATTERY PROVIDING 24VDC POWER.
 - 14) REMOVE EXISTING FIRE ALARM WIRING IN SAME BOX. INSTALL NEW BATTERY PROVIDING 24VDC POWER.
 - 15) REMOVE EXISTING FIRE ALARM WIRING IN SAME BOX. INSTALL NEW BATTERY PROVIDING 24VDC POWER.
 - 16) REMOVE EXISTING FIRE ALARM WIRING IN SAME BOX. INSTALL NEW BATTERY PROVIDING 24VDC POWER.
 - 17) REMOVE EXISTING FIRE ALARM WIRING IN SAME BOX. INSTALL NEW BATTERY PROVIDING 24VDC POWER.
 - 18) REMOVE EXISTING FIRE ALARM WIRING IN SAME BOX. INSTALL NEW BATTERY PROVIDING 24VDC POWER.
 - 19) REMOVE EXISTING FIRE ALARM WIRING IN SAME BOX. INSTALL NEW BATTERY PROVIDING 24VDC POWER.
 - 20) REMOVE EXISTING FIRE ALARM WIRING IN SAME BOX. INSTALL NEW BATTERY PROVIDING 24VDC POWER.
 - 21) REMOVE EXISTING FIRE ALARM WIRING IN SAME BOX. INSTALL NEW BATTERY PROVIDING 24VDC POWER.
 - 22) REMOVE EXISTING FIRE ALARM WIRING IN SAME BOX. INSTALL NEW BATTERY PROVIDING 24VDC POWER.
 - 23) REMOVE EXISTING FIRE ALARM WIRING IN SAME BOX. INSTALL NEW BATTERY PROVIDING 24VDC POWER.
 - 24) REMOVE EXISTING FIRE ALARM WIRING IN SAME BOX. INSTALL NEW BATTERY PROVIDING 24VDC POWER.
 - 25) REMOVE EXISTING FIRE ALARM WIRING IN SAME BOX. INSTALL NEW BATTERY PROVIDING 24VDC POWER.
 - 26) REMOVE EXISTING FIRE ALARM WIRING IN SAME BOX. INSTALL NEW BATTERY PROVIDING 24VDC POWER.
 - 27) REMOVE EXISTING FIRE ALARM WIRING IN SAME BOX. INSTALL NEW BATTERY PROVIDING 24VDC POWER.
 - 28) REMOVE EXISTING FIRE ALARM WIRING IN SAME BOX. INSTALL NEW BATTERY PROVIDING 24VDC POWER.
 - 29) REMOVE EXISTING FIRE ALARM WIRING IN SAME BOX. INSTALL NEW BATTERY PROVIDING 24VDC POWER.
 - 30) REMOVE EXISTING FIRE ALARM WIRING IN SAME BOX. INSTALL NEW BATTERY PROVIDING 24VDC POWER.
 - 31) REMOVE EXISTING FIRE ALARM WIRING IN SAME BOX. INSTALL NEW BATTERY PROVIDING 24VDC POWER.
 - 32) REMOVE EXISTING FIRE ALARM WIRING IN SAME BOX. INSTALL NEW BATTERY PROVIDING 24VDC POWER.
 - 33) REMOVE EXISTING FIRE ALARM WIRING IN SAME BOX. INSTALL NEW BATTERY PROVIDING 24VDC POWER.
 - 34) REMOVE EXISTING FIRE ALARM WIRING IN SAME BOX. INSTALL NEW BATTERY PROVIDING 24VDC POWER.
 - 35) REMOVE EXISTING FIRE ALARM WIRING IN SAME BOX. INSTALL NEW BATTERY PROVIDING 24VDC POWER.
 - 36) REMOVE EXISTING FIRE ALARM WIRING IN SAME BOX. INSTALL NEW BATTERY PROVIDING 24VDC POWER.
 - 37) REMOVE EXISTING FIRE ALARM WIRING IN SAME BOX. INSTALL NEW BATTERY PROVIDING 24VDC POWER.
 - 38) REMOVE EXISTING FIRE ALARM WIRING IN SAME BOX. INSTALL NEW BATTERY PROVIDING 24VDC POWER.
 - 39) REMOVE EXISTING FIRE ALARM WIRING IN SAME BOX. INSTALL NEW BATTERY PROVIDING 24VDC POWER.
 - 40) REMOVE EXISTING FIRE ALARM WIRING IN SAME BOX. INSTALL NEW BATTERY PROVIDING 24VDC POWER.
 - 41) REMOVE EXISTING FIRE ALARM WIRING IN SAME BOX. INSTALL NEW BATTERY PROVIDING 24VDC POWER.
 - 42) REMOVE EXISTING FIRE ALARM WIRING IN SAME BOX. INSTALL NEW BATTERY PROVIDING 24VDC POWER.
 - 43) REMOVE EXISTING FIRE ALARM WIRING IN SAME BOX. INSTALL NEW BATTERY PROVIDING 24VDC POWER.
 - 44) REMOVE EXISTING FIRE ALARM WIRING IN SAME BOX. INSTALL NEW BATTERY PROVIDING 24VDC POWER.
 - 45) REMOVE EXISTING FIRE ALARM WIRING IN SAME BOX. INSTALL NEW BATTERY PROVIDING 24VDC POWER.
 - 46) REMOVE EXISTING FIRE ALARM WIRING IN SAME BOX. INSTALL NEW BATTERY PROVIDING 24VDC POWER.
 - 47) REMOVE EXISTING FIRE ALARM WIRING IN SAME BOX. INSTALL NEW BATTERY PROVIDING 24VDC POWER.
 - 48) REMOVE EXISTING FIRE ALARM WIRING IN SAME BOX. INSTALL NEW BATTERY PROVIDING 24VDC POWER.
 - 49) REMOVE EXISTING FIRE ALARM WIRING IN SAME BOX. INSTALL NEW BATTERY PROVIDING 24VDC POWER.
 - 50) REMOVE EXISTING FIRE ALARM WIRING IN SAME BOX. INSTALL NEW BATTERY PROVIDING 24VDC POWER.



ROBERT F. STUHR ARCHITECT INC.
3121 CALIFORNIA AVE.
BAKERSFIELD, CA 93304
(805) 327-1632

RF Stuhr
C-1610
WILLIAM J. MELBY AIA
DANNY E. ORDIZ AIA
C-14728

TITLE 24 & IBC UBC.
DATE: 1/15/2009
DRAWN: J.M. MELBY
CHECKED: J.M. MELBY
DATE: 1/15/2009

APPROVED
JAN 15 2009
BY: J.M. MELBY
FOR: R.F. STUHR ARCHITECT INC.

W. Stuhr
1/15/09

W. Stuhr
1/15/09

UNIT F & UNIT G POWER & SIGNAL PLAN
VISTA EAST CONTINUATION HIGH SCHOOL 30 YEAR MODERNIZATION
815 EUREKA STREET
RERN HIGH SCHOOL DISTRICT
KERN COUNTY, CALIFORNIA

CHECK AND VERIFY ALL DIMENSIONS BEFORE PROCEEDING WITH THE WORK. REPORT DISCREPANCIES TO THE ARCHITECT IMMEDIATELY. SHALL CONFORM TO IBC.

MARK	DATE	REVISIONS
△		
△		
△		
△		

9
OF 9 SHEETS