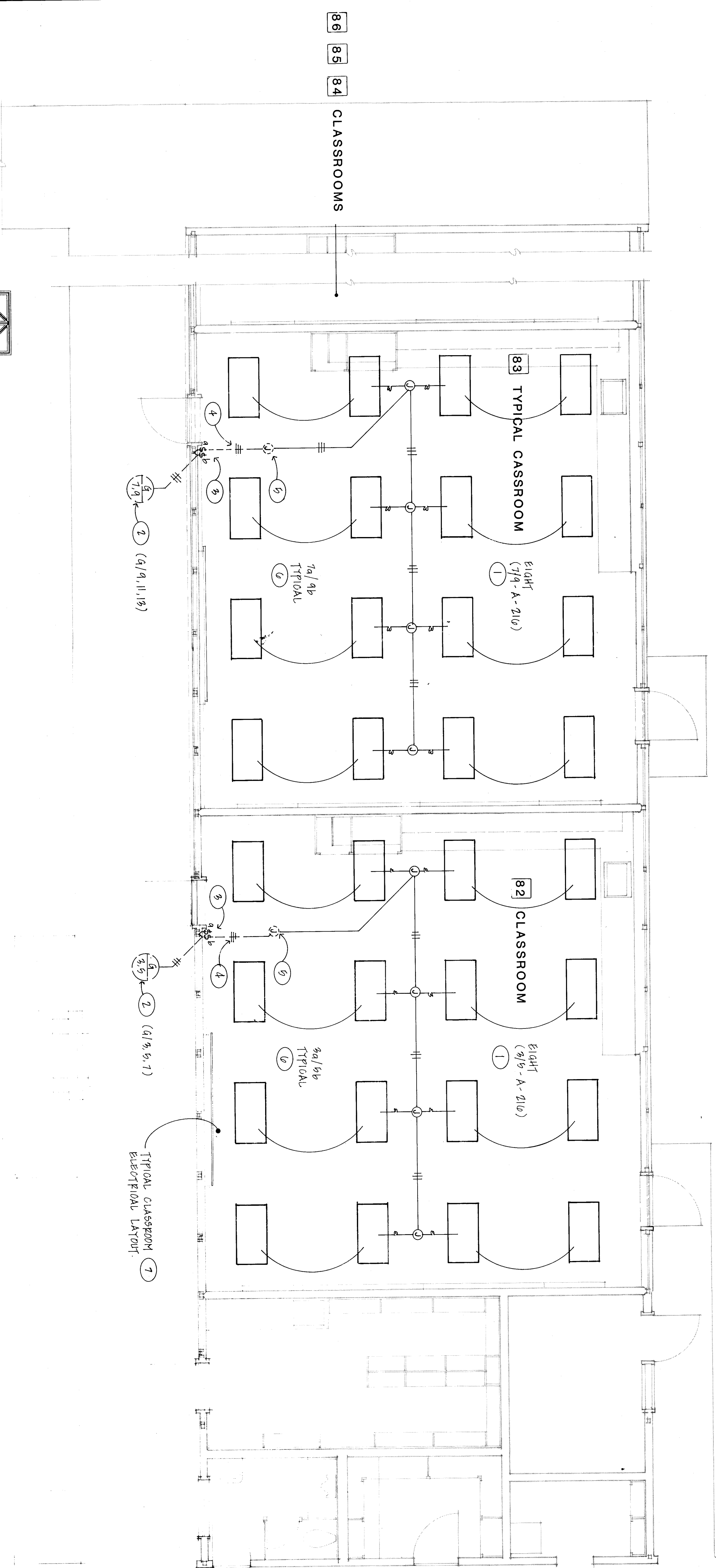


**UNIT F & UNIT G LIGHTING PLAN**  
**VISTA EAST CONTINUATION HIGH SCHOOL 30 YEAR MODERNIZATION**  
815 EUREKA STREET  
KERN HIGH SCHOOL DISTRICT  
KERN COUNTY, CALIFORNIA

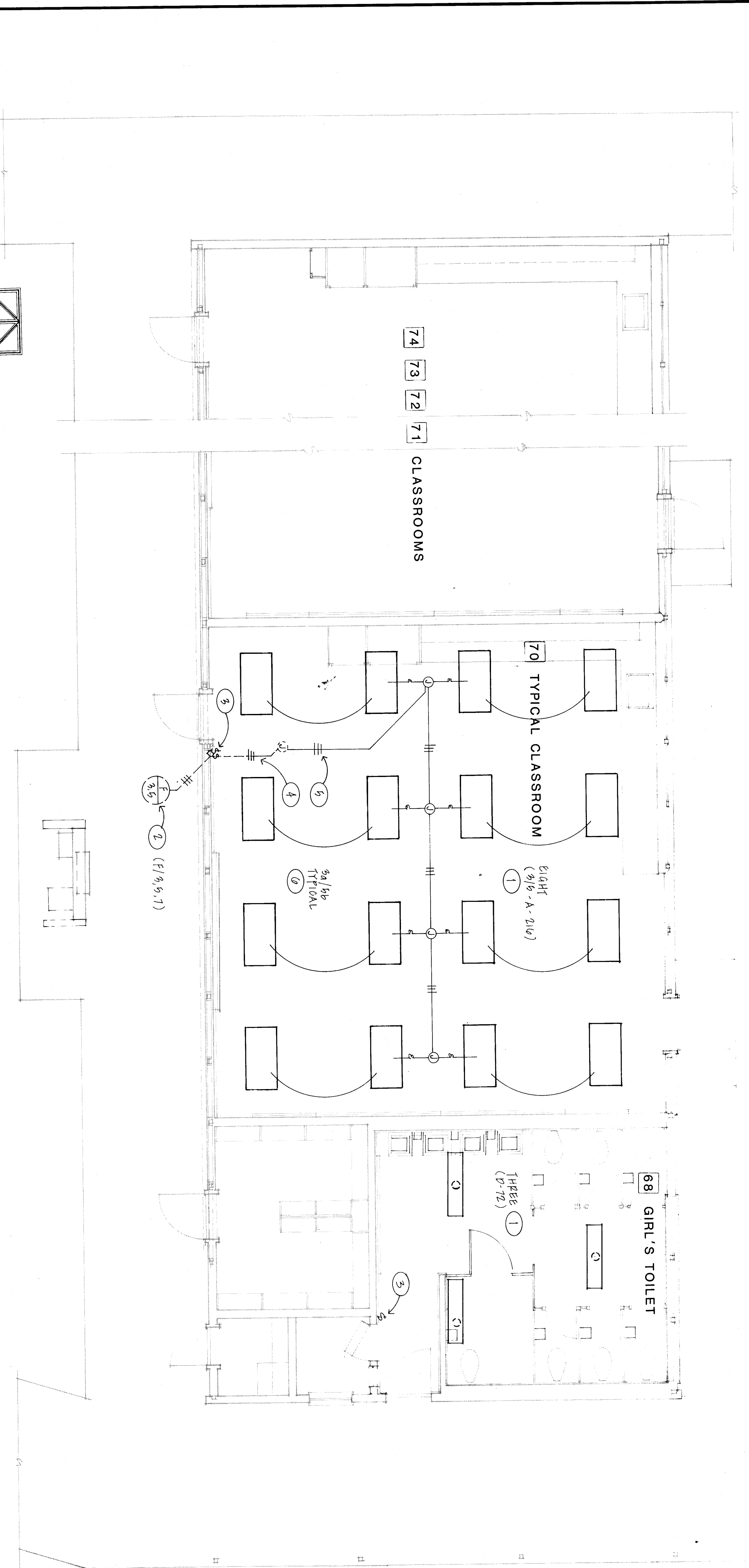
CHECK AND VERIFY ALL DIMENSIONS BEFORE WORK AND REPORT DISCREPANCIES TO THE ARCHITECT. ALL CONSTRUCTION SHALL CONFORM TO BEC.

MARK	DATE	REVISIONS
△		
△		
△		
△		

- UNIT F & G LIGHTING PLAN NOTES:**
1. REPAIR EXISTING LIGHTING FIXTURES WITH NEW TYPE AS INDICATED.
  2. EXISTING FIXTURES TO BE REPAIRED - EXISTING CIRCUIT NUMBERS INDICATED IN PARENTHESES. CONTRACTOR SHALL REPAIR WIRING IN EXISTING CONDUIT WITH NEW WIRE INDICATED BY THE NUMBER OF WIRE LINES. CONNECT NEW LIGHTS TO EXISTING WIRING.
  3. RECONNECT EXISTING SWITCHES.
  4. REMOVE WIRING IN EXISTING CONDUIT WITH NEW AS INDICATED AS CONNECT TO NEW CIRCUITS AT EXISTING LIGHTING OUTLET. VERIFY LOCATION AT SITE.
  5. DEMOLISH TWO 2-LAMP FIXTURES INDICATED. TYPICAL - CONNECT ALL INNER LAMP WIRING TO EXISTING WIRING IN EXISTING CONDUIT. FOR LAYOUT OF OTHER CLASSROOMS IN BLDG F&G RECONSTRUCT LAYOUT IN THIS CLASSROOM IS TYPICAL OF ALL IN EXCEPT WHERE SHOWN OTHERWISE ON THIS PLAN.



**UNIT G LIGHTING PLAN (PARTIAL)**  
1/4" = 1'-0"



**UNIT F LIGHTING PLAN (PARTIAL)**  
1/4" = 1'-0"

