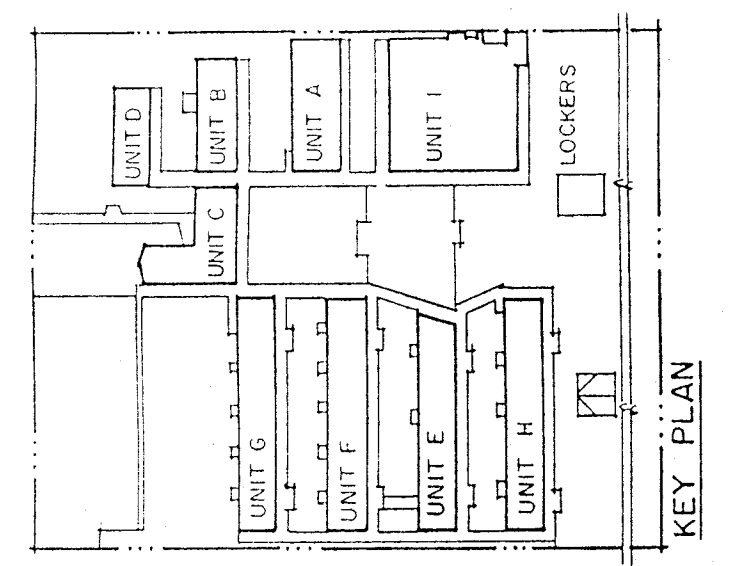


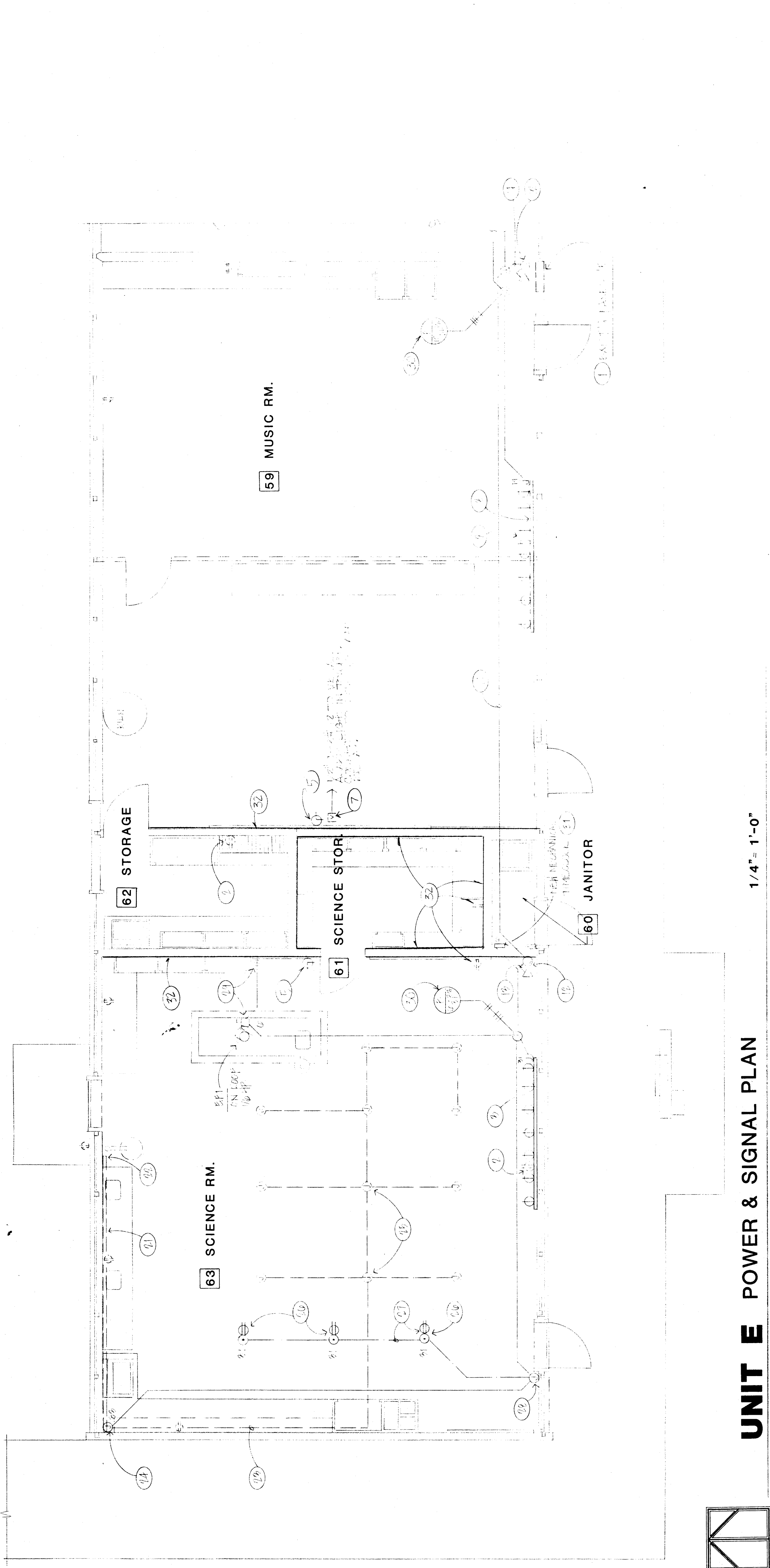
**UNIT E POWER & SIGNAL PLAN**  
 VISTA EAST CONTINUATION HIGH  
 SCHOOL 30 YEAR MODERNIZATION  
 815 EUREKA STREET  
 KERN COUNTY, CALIFORNIA

CHECK AND VERIFY ALL WORK BEFORE PROCEEDING WITH THE WORK. REPORT DISCREPANCIES TO THE ARCHITECT. ALL CONSTRUCTION SHALL CONFORM TO USC.

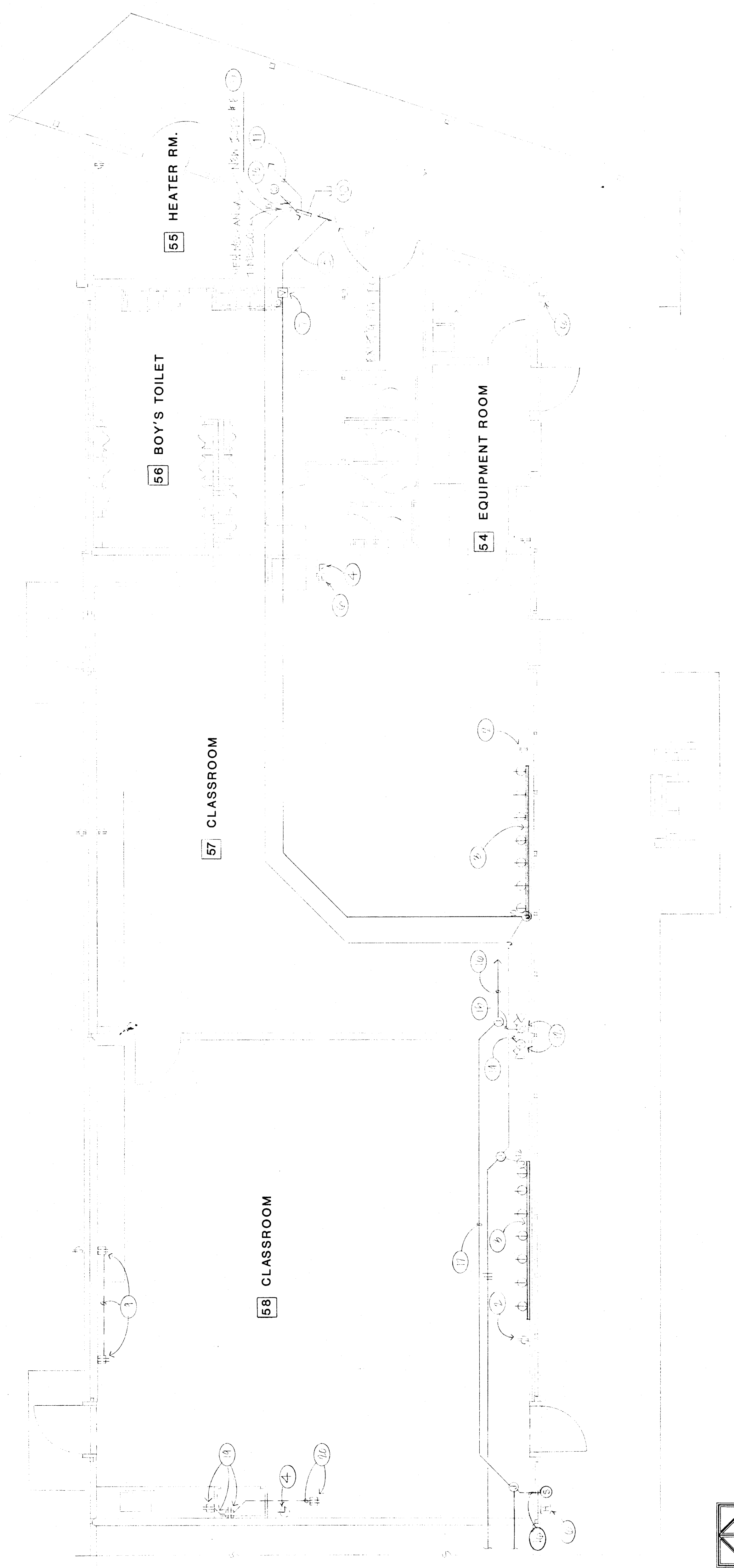
MARK	DATE	REVISIONS
△		
△		
△		



- WALL 1 - PANEL 1 - SIGNAL PLAN - REVISIONS:**
- REPLACE EXISTING PANEL 120/240V 3Φ 4W, 225A 52-CIRCUIT WITH 200A MAIN BREAKER TO RECONNECT EXISTING AND NEW CIRCUITS. PROVIDE (2) 200/1P SAME BREAKERS.
  - PROVIDE NEW PLUMBING, MINEROLD #200-18" WITH SINGLE RECEPTACLES 18" FROM FLOOR. CUT AND CAP CONDUIT FLASH WITH FINISHED FLOOR. PATCH FLOOR AS DIRECTED BY ARCHITECT.
  - REMOVE EXISTING CLOCK. DISCONNECT AND CAP EXISTING CLOCK WIRES. RECONNECT EXISTING AND NEW WIRES IN SAME BOX. INSTALL NEW METERS. POWERED QUARTZ CLOCK AT 9" x 9" x 0".
  - PROVIDE NEW BATTERY POWERED QUARTZ CLOCK AT 9" x 9" x 0".
  - EXISTING FIRE ALARM DEVICE AND WIRING TO REMAIN.
  - REMOVE EXISTING FIRE ALARM DEVICE AND WIRING TO REMAIN. RECONNECT EXISTING AND NEW WIRES TO EXISTING 120VAC SERIES FIRE ALARM SIGNALING CIRCUIT PER WIRING DIAGRAM.
  - 1/2" C - 2#14 TO CONNECT TO EXISTING 120VAC SERIES FIRE ALARM SIGNALING CIRCUIT PER WIRING DIAGRAM.
  - NEW ITC'S SMALL AND 18" x 30" x 4" D WITH 3/4" PLUMBING BACKWARD INSIDE. PLUMBING STRIPS SHALL BE PROVIDED BY MECHANICAL CONTRACTOR.
  - 1/2" C - 2#14 TO CONNECT TO EXISTING 120VAC SERIES FIRE ALARM SIGNALING CIRCUIT PER WIRING DIAGRAM.
  - 1-1/2" C - 10 A, 4 B CABLES TO NEW ITC'S #4 IN UNIT F. RUN CONDUIT ON TOP OF EXISTING WALK COVER.
  - PROVIDE NEW INTERCOM DEVICES AS INDICATED.
  - 1/2" C - 1 A CABLE, TYPICAL FOR INTERCOM HANDSET.
  - 1/2" C - 1 A, 1 B CABLES.
  - 3/4" C - 2 A, 1 B CABLES.
  - 3/4" C - 2 A, 2 B CABLES TO NEW ITC'S.
  - EXISTING SURFACE RECEPTACLE, BACKWAY AND PLUMBING TO REMAIN.
  - REMOVE EXISTING SURFACE RECEPTACLE, BACKWAY AND WIRING.
  - REMOVE EXISTING ELECTRICAL CONNECTION BETWEEN PLUMBING AND CONDUIT/BOX FROM FLOOR. CUT AND CAP CONDUIT FLASH WITH FINISHED FLOOR. PATCH FLOOR AS DIRECTED BY ARCHITECT.
  - REMOVE EXISTING SURFACE RACKWAY FROM PLUMBING TO CEILING JUNCTION BOXES.
  - RUN NEW WIRING IN WALL TO RECONNECT EXISTING RECEPTACLE, CONDUITS AND DROP CORNS. RETURN DROP CORNS TO DISTRICT.
  - PROVIDE NEW FLOOR OUTLETS.
  - CUT AND PATCH EXISTING SLAB FOR NEW CONDUITS AND FLOOR BOXES. MOVE EXISTING FLOOR BOX TO ATTIC. RUN NEW CONDUIT IN WALL THROUGH EXISTING SLAB TO NEW FLOOR BOXES.
  - CONNECT NEW EXHAUST FAN AND CONTROL AS DIRECTED BY MECHANICAL CONTRACTOR.
  - REMOVE EXISTING PANEL. PROVIDE NEW 200/1P BREAKERS IN PANEL FOR NEW CIRCUITS.
  - PROVIDE 120V/240V CONTROL TRANSFORMER IN ATTIC AND CONNECT NEW CONDUIT, WIRING AND CONNECTION FOR ALL HVAC EQUIPMENT PER CONTROL DIAGRAM SHOWN ON MECHANICAL PLANS.
  - THESE WALLS TO RECEIVE NEW STYRENE-ACRYLATE GENERAL REFERENCE ELECTRICAL NOTES ON SHEET B1 FOR WORK REQUIRED ON EXISTING ELECTRICAL ON THESE WALLS.



**UNIT E POWER & SIGNAL PLAN** 1/4" = 1'-0"



**UNIT E POWER & SIGNAL PLAN** 1/4" = 1'-0"