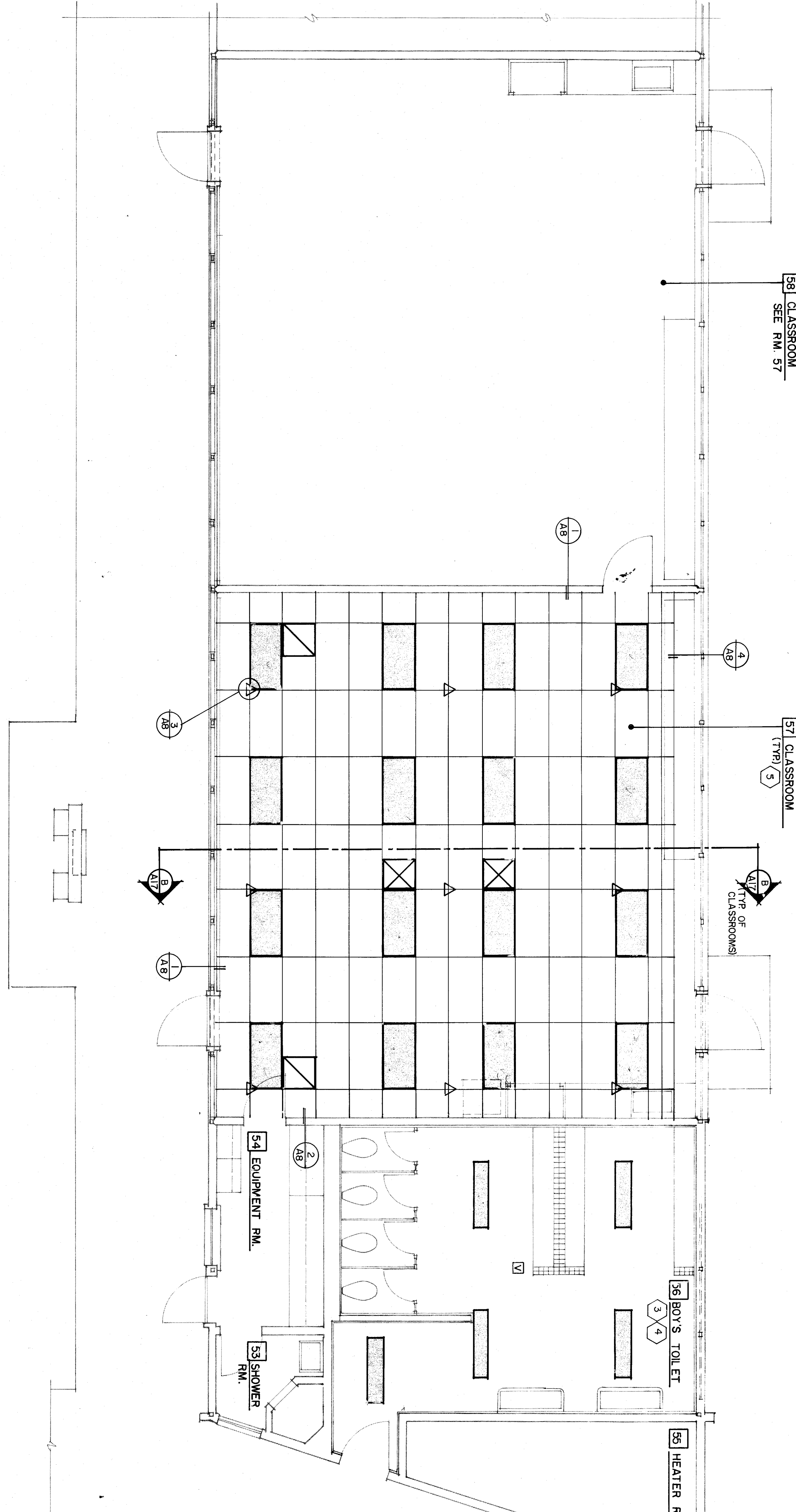


Unit E

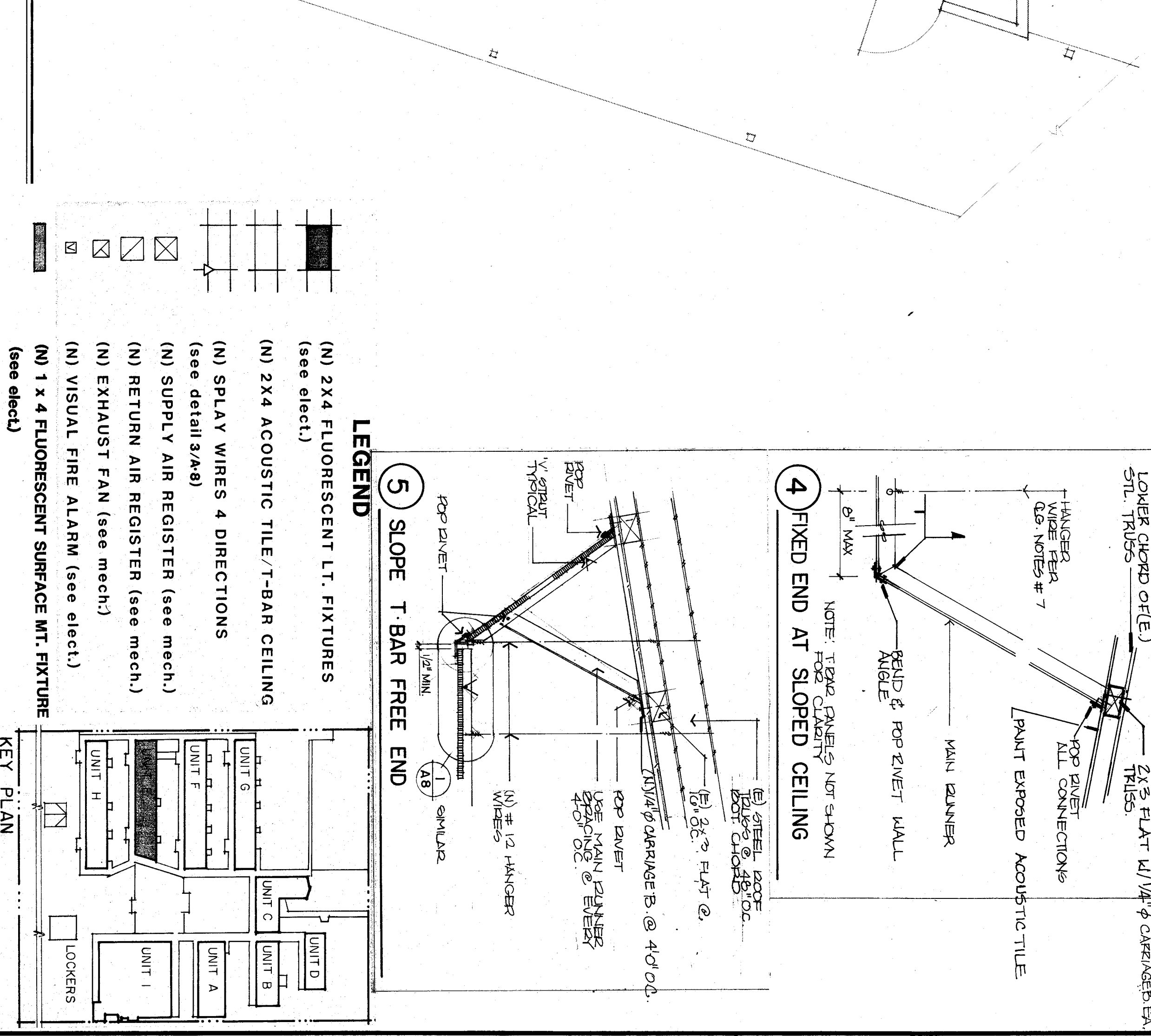
NOTE: ALL ACOUSTIC MINERAL TILE AND LAY-IN PANELS SHALL HAVE CLASS A FLAME SPREAD PER FED. SPEC. SSS 119.23 OR UNDER (UL) AND SMOKE DEVELOPED OF 0-75.

- REFLECTED CEILING NOTES**
- (N) exhaust fan.
 - (N) surface mounted.
 - Replace (E) Lights with (N) as per electrical deadweighting as required.
 - (N) T-bar suspended ceiling with 1/2" acoustic insulation.
 - (N) T-bar suspended ceiling with 1/2" acoustic insulation.
 - (N) 2x4 fluorescent fixture.
 - Remove (E) occasional tile, add (N) 5/8" Type 'X' Gyp Bd. top, texture, joint. Ceiling per table 43-C Item 13-14 Codebook to Uniform Building Code 1988



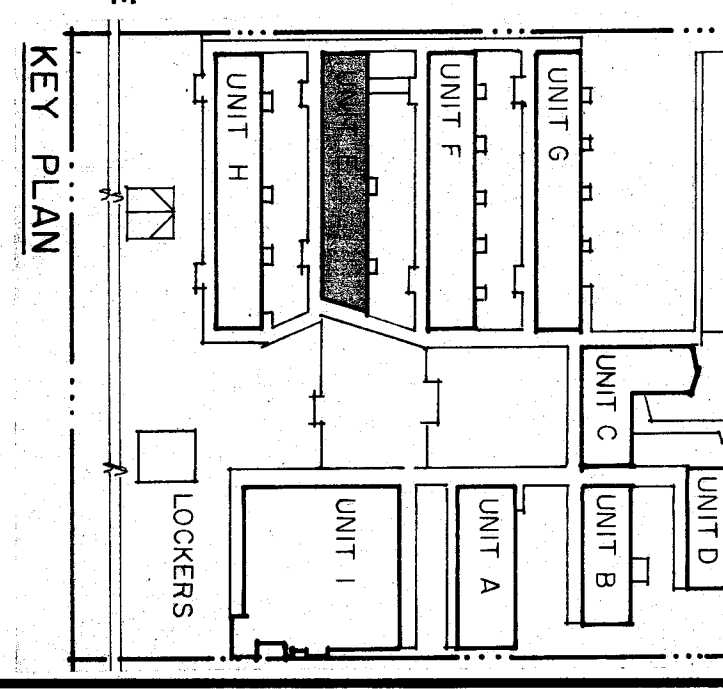
Unit E continued

REFLECTED CEILING PLANS



LEGEND

- (N) 2x4 FLUORESCENT LT. FIXTURES (see elect.)
- (N) 2x4 ACOUSTIC TILE/T-BAR CEILING (see detail 5A-B)
- (N) SPLAY WIRES 4 DIRECTIONS (see detail 5A-B)
- (N) SUPPLY AIR REGISTER (see mech.)
- (N) RETURN AIR REGISTER (see mech.)
- (N) EXHAUST FAN (see mech.)
- (N) VISUAL FIRE ALARM (see elect.)
- (N) 1 x 4 FLUORESCENT SURFACE MT. FIXTURE (see elect.)



REFLECTED CEILING PLAN - UNIT E, NOTES

VISTA EAST CONTINUATION HIGH SCHOOL 30 YEAR MODERNIZATION

815 EUREKA STREET
KERN HIGH SCHOOL DISTRICT
KERN COUNTY, CALIFORNIA

EXP-
ROBERT F. STUHR AIA C-1610
WILLIAM J. MELBY AIA C-18835
DANNY E. CRODZ AIA C-14728

3121 CALIFORNIA AVE.
BAKERSFIELD, CA
93304 (805) 327-1632

ROBERT F. STUHR ARCHITECT INC.

DATE: 6-14-90
DRAWN: M.K.B.
CHECKED: 707

JOB NO. 707

OF 19 SHEETS