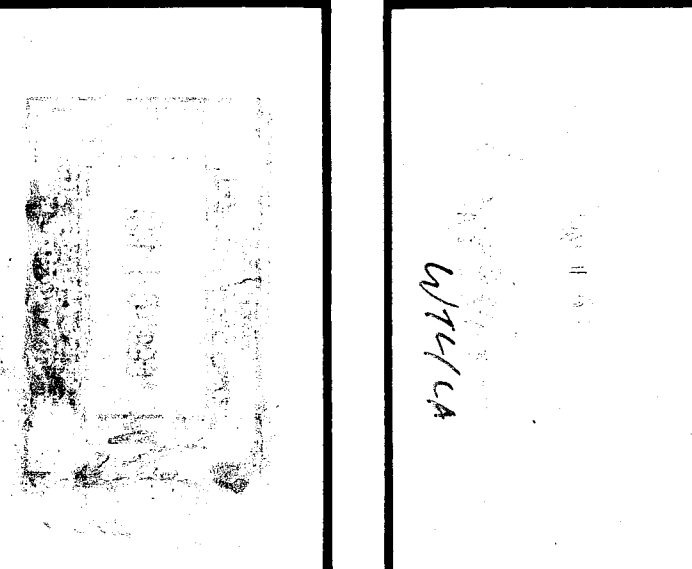




ROBERT F. STUHR ARCHITECT INC.
 3121 CALIFORNIA AVE.
 BAKERSFIELD CA.
 93304 (805) 327-1332

EDP
 ROBERT F. STUHR AIA C-1610
 WILLIAM J. MELBY AIA C-16835
 DANNY E. ORDIZ AIA C-14728

TITLE 24 & 996 USC



3/15/2015
 11/14/14

FLOOR PLAN - UNIT E, NOTES
 VISTA EAST CONTINUATION HIGH SCHOOL 30 YEAR MODERNIZATION
 815 EUREKA STREET
 KERN HIGH SCHOOL DISTRICT
 KERN COUNTY, CALIFORNIA

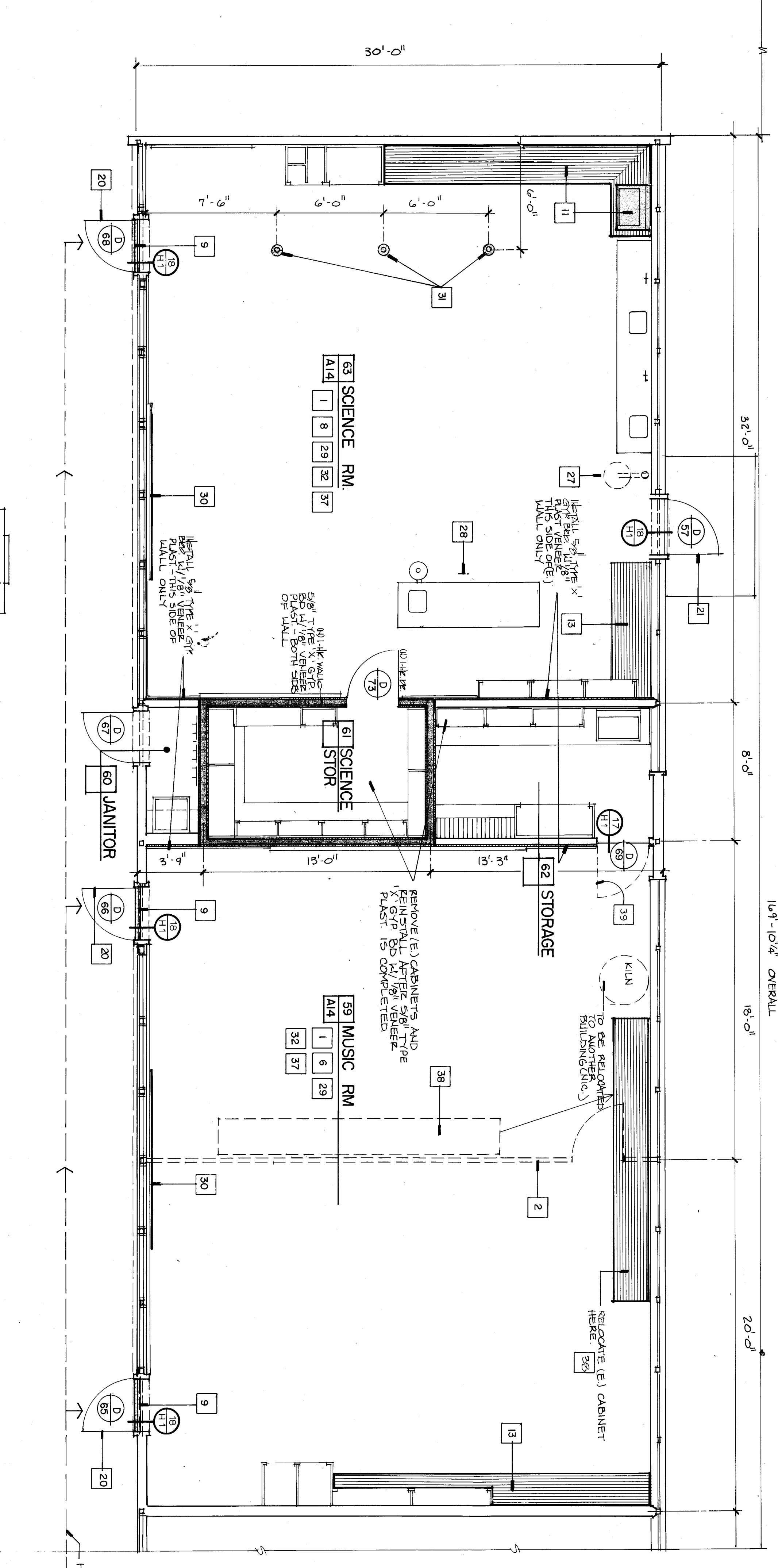
CHECK AND VERIFY ALL WORKING DRAWINGS AND REVISIONS WITH THE ARCHITECT. ALL CONSTRUCTION SHALL CONFORM TO THESE.

MARK	DATE	REVISIONS
△		
△		
△		

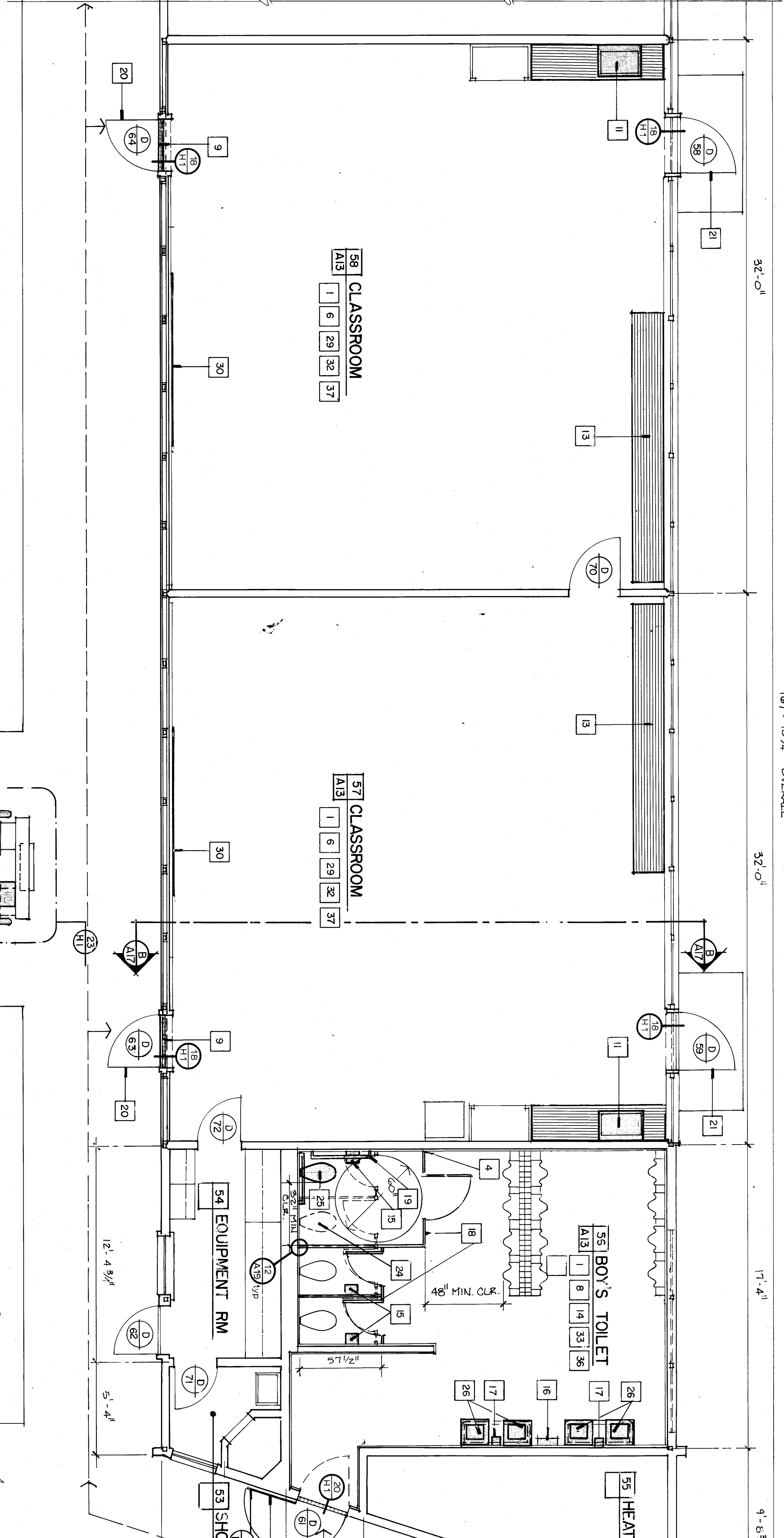
DESIGN: 707
 DRAWN: M.K.B.
 CHECKED: [Signature]
 DATE: 6-14-10
 OF 19 SHEETS

FLOOR PLAN NOTES

1. Patch walls as required.
2. Remove dashed (E) wall.
3. (N) Ceramic tile wainscot.
4. Repair (E) ceramic tile.
5. (N) H.C. accessible floor finish - patch as required - paint.
6. (N) H.C. accessible floor finish - patch as required - paint.
7. Remove (E) floor finish - ceramic tile with ceramic tile base.
8. Patch (E) floor as finished patch (E).
9. (N) H.C. accessible threshold door/frame and H.C. trim.
10. Replace (E) sink and countertop and install countertop.
11. Remove dashed (E) plumbing lines - patch.
12. Remove dashed (E) plumbing lines - patch.
13. Replace with (N) laminated plastic/ accessories.
14. (N) toilet paper accessories.
15. (N) soap dispenser.
16. (N) soap dispenser.
17. (N) soap dispenser.
18. (N) soap dispenser.
19. (N) soap dispenser.
20. (N) soap dispenser.
21. (N) soap dispenser.
22. (N) soap dispenser.
23. (N) soap dispenser.
24. (N) soap dispenser.
25. (N) soap dispenser.
26. (N) soap dispenser.
27. (E) EMERGENCY SHOWER UNIT.
28. (N) exhaust fan.
29. (N) exhaust fan.
30. (N) exhaust fan.
31. (N) exhaust fan.
32. (N) exhaust fan.
33. (N) exhaust fan.
34. (N) H.C. accessible.
35. (N) H.C. accessible.
36. Patch ceiling as required.
37. Patch ceiling as required.
38. Patch ceiling as required.
39. REMOVE (E) DOOR-PAINT JAMB.



Unit E



Unit E continued
FLOOR PLANS

LEGEND
 (N) 5/8" GYP - W/ 1/8" PLASTER VENEER OVER (E) PLYWOOD FINISH FOR 1-HR. WALL
 (N) LAMINATED PLASTIC COUNTER TOPS
 (N) SINKS, TOILETS OR ACCESSORIES
 (N) FLOOR ELECT. OUTLETS (see elect.)
 (N) H.C. THRESHOLDS

