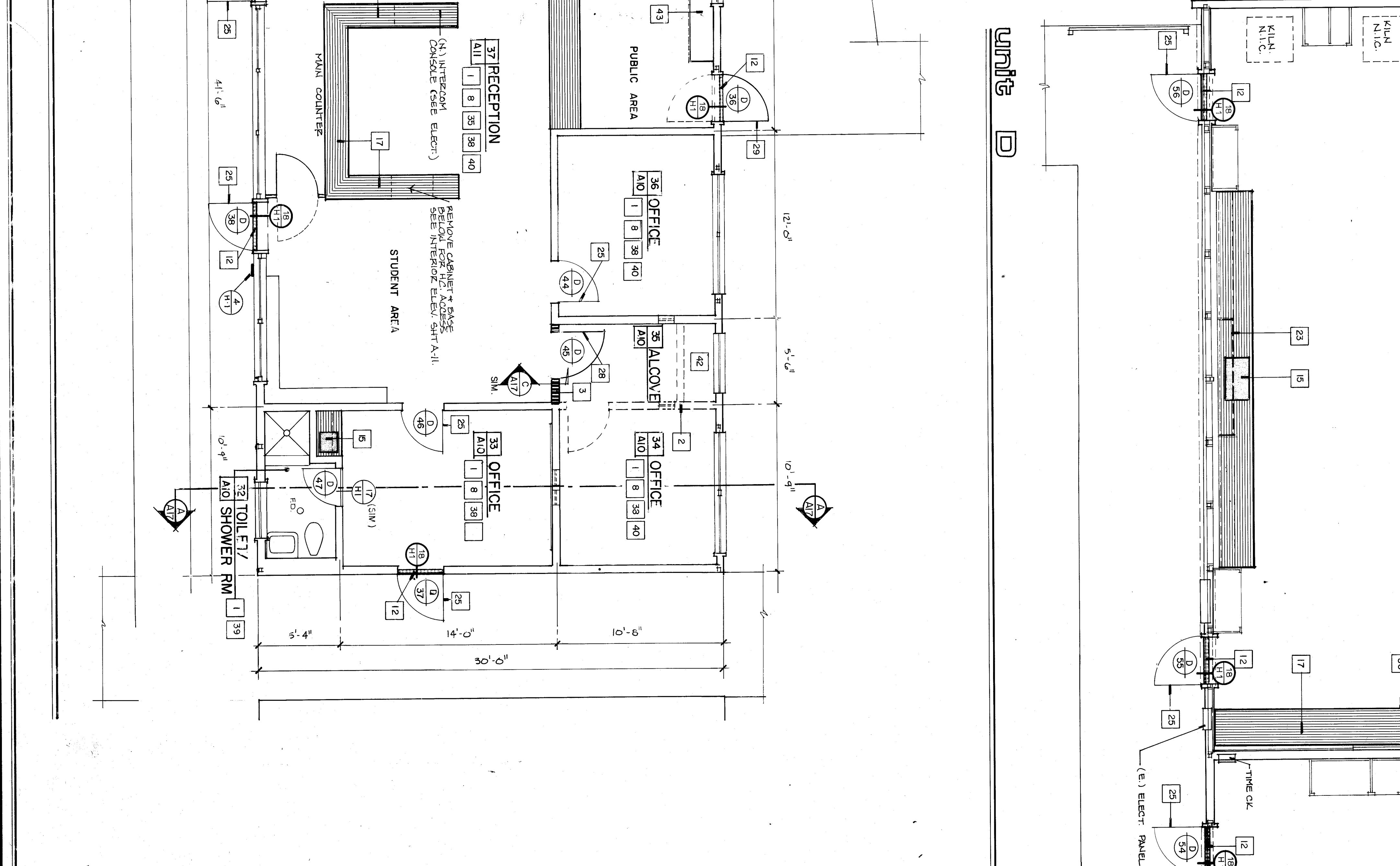
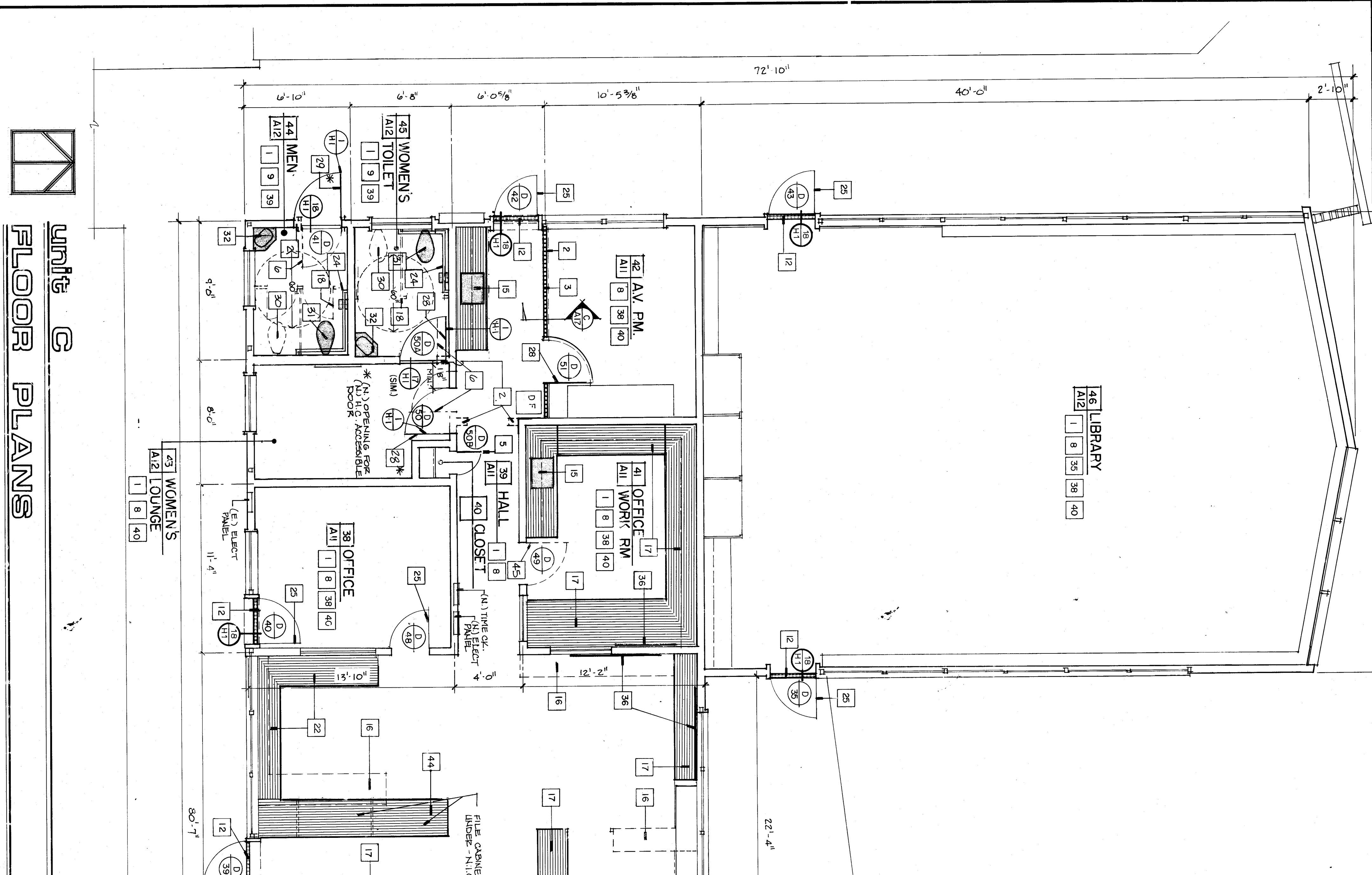
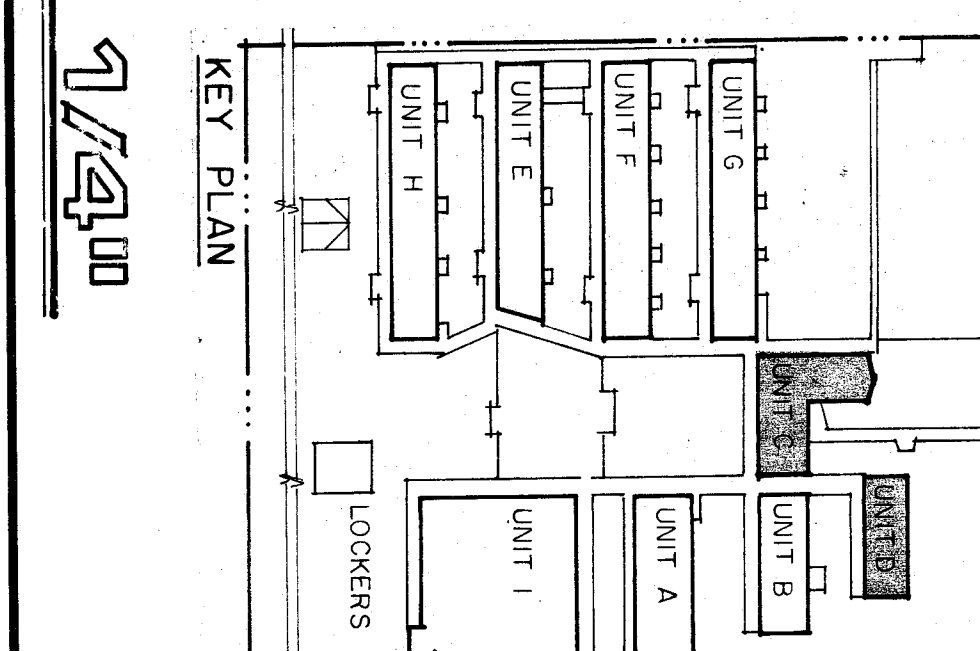


FLOOR PLAN NOTES

1. Patch walls as required.
2. Patch (E) finish - paint.
3. Patch (N) 2x stud wall with finish to match (E).
4. (N) remove tile w/terrace.
5. (N) remove tile w/terrace.
6. (N) remove tile w/terrace.
7. (N) remove tile w/terrace.
8. (N) remove tile w/terrace.
9. (N) remove tile w/terrace.
10. (N) remove tile w/terrace.
11. (N) remove tile w/terrace.
12. (N) remove tile w/terrace.
13. (N) remove tile w/terrace.
14. (N) toilet partitions.
15. (N) toilet partitions.
16. (N) toilet partitions.
17. (N) toilet partitions.
18. (N) toilet partitions.
19. (N) toilet partitions.
20. (N) toilet partitions.
21. (N) toilet partitions.
22. (N) toilet partitions.
23. (N) toilet partitions.
24. (N) toilet partitions.
25. (N) toilet partitions.
26. (N) toilet partitions.
27. (N) 1-bar suspended ceiling and R-19 insulation.
28. (N) 1-bar suspended ceiling and R-19 insulation.
29. (N) 1-bar suspended ceiling and R-19 insulation.
30. (N) 1-bar suspended ceiling and R-19 insulation.
31. (N) 1-bar suspended ceiling and R-19 insulation.
32. (N) 1-bar suspended ceiling and R-19 insulation.
33. (N) 1-bar suspended ceiling and R-19 insulation.
34. (N) 1-bar suspended ceiling and R-19 insulation.
35. (N) 1-bar suspended ceiling and R-19 insulation.
36. (N) 1-bar suspended ceiling and R-19 insulation.
37. (N) 1-bar suspended ceiling and R-19 insulation.
38. (N) 1-bar suspended ceiling and R-19 insulation.
39. (N) 1-bar suspended ceiling and R-19 insulation.
40. (N) 1-bar suspended ceiling and R-19 insulation.
41. (N) 1-bar suspended ceiling and R-19 insulation.
42. (N) 1-bar suspended ceiling and R-19 insulation.
43. (N) 1-bar suspended ceiling and R-19 insulation.
44. (N) 1-bar suspended ceiling and R-19 insulation.
45. (N) 1-bar suspended ceiling and R-19 insulation.



- LEGEND**
- (N) LAMINATED PLASTIC COUNTER TOPS
 - (N) SINKS, TOILETS OR ACCESSORIES
 - (N) FLOOR ELECT. OUTLETS (see elect.)
 - (N) H.C. THRESHOLDS
 - (N) 2 X 4 WALLS



3121 CALIFORNIA AVE.
BAKERSFIELD CA.
93304 (805) 327-1632

ROBERT F. STUHR ARCHITECT INC.

ERF - STUHR AIA C-1610
WILLIAM J. MELEY AIA C-16335
DANNY E. ORDIZ AIA C-14728

FLOOR PLANS - UNITS C & D, NOTES

VISTA EAST CONTINUATION HIGH SCHOOL 30 YEAR MODERNIZATION

815 EUREKA STREET
KERN HIGH SCHOOL DISTRICT
KERN COUNTY, CALIFORNIA

DATE: 07/14/10

JOB NO. 707

MARK DATE REVISIONS