

ROBERT F. STUHR ARCHITECT INC.
 3121 CALIFORNIA AVE.
 BAKERSFIELD CA 93304
 (805) 327-1632

DATE: 07/14/00
 DRAWN: M.K.B.
 CHECKED: M.K.B.
 JOB NO: 707

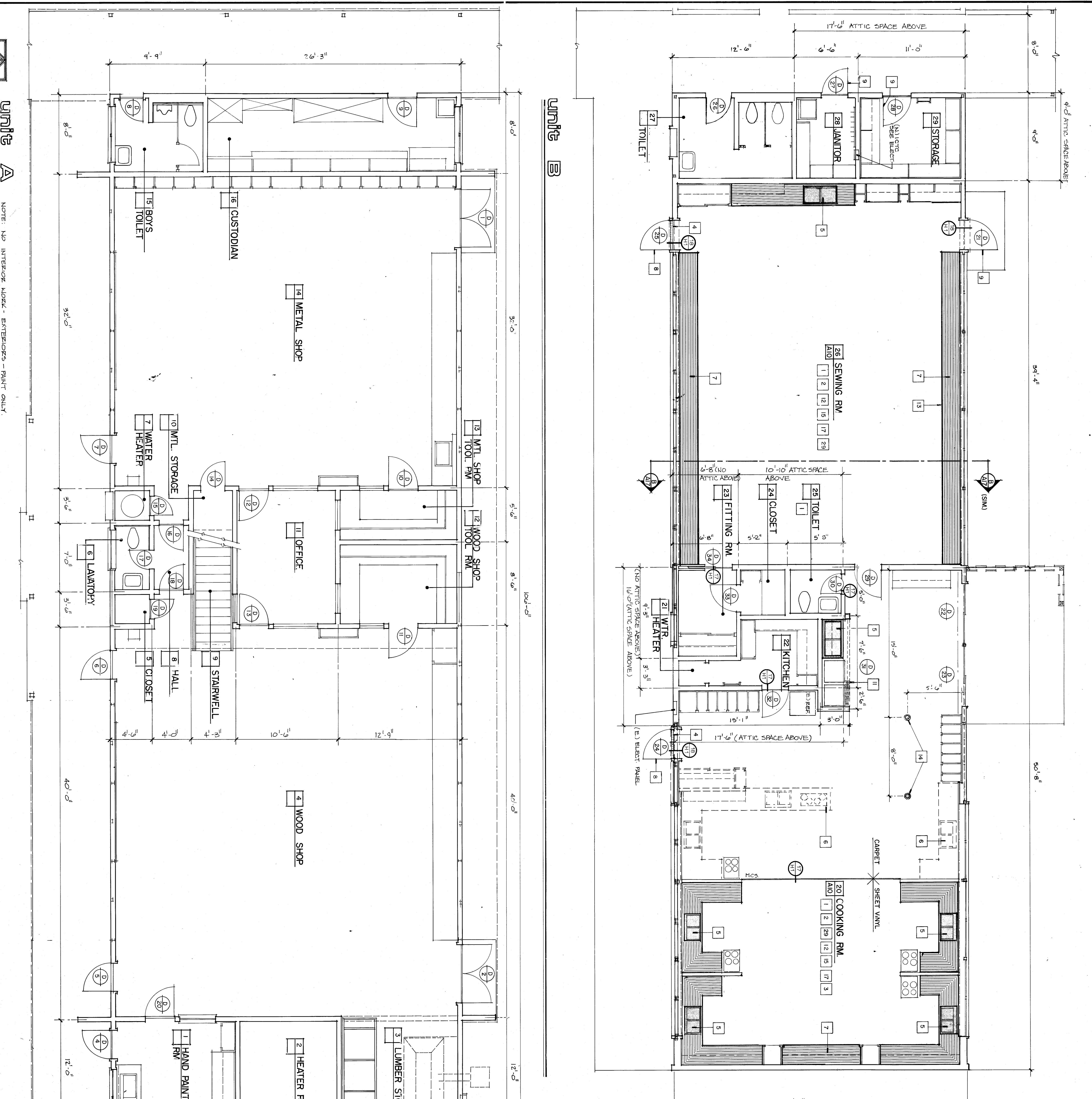
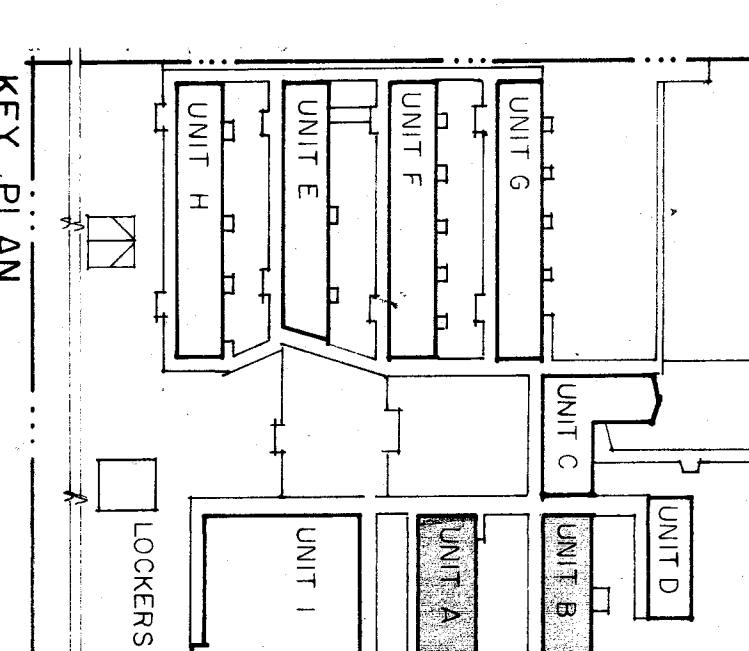
TITLE: 24 & 1766 U.S.C.
 UNIT A
 UNIT B
 UNIT C
 UNIT D
 UNIT E
 UNIT F
 UNIT G
 UNIT H
 UNIT I
 LOCKERS

FLOOR PLANS - UNITS A & B, NOTES
VISTA EAST CONTINUATION HIGH SCHOOL 30 YEAR MODERNIZATION
 815 EUREKA STREET
 KERN HIGH SCHOOL DISTRICT
 KERN COUNTY, CALIFORNIA

CHECK AND VERIFY ALL DIMENSIONS. BE SURE TO REPORT DISCREPANCIES TO THE ARCHITECT. ALL CONSTRUCTION SHALL CONFORM TO USC.

MARK	DATE	REVISIONS
△		
△		
△		
△		

- FLOOR PLAN NOTES**
- Patch walls as required. Match (E) finish to paint, asphalt tile and (N) R.T.S.B.
 - Patch (E) floor as (N) R.T.S.B.
 - (N) H.C. floor as (N) floor.
 - (N) H.C. accessible floor.
 - Replace (E) sink and counter top with (N) sink counter top and plastic laminate.
 - Remove existing (E) cabinets and plumbing if required. cap any plumbing lines & patch walls. **Cap any Gas Lines.**
 - Replace with (N) laminated plastic counter top.
 - Replace (E) door hardware with H.C. hardware paint door.
 - Replace (E) door with new hardware.
 - (N) solid core wood door, H.C. frame and H.C. (N) **Access** door at (E).
 - Remove (E) door hardware.
 - Replace (E) thermostat's management system.
 - Replace (E) thermostat's management system.
 - (N) floor outlets as indicated.
 - Indicated room system as per electrical drawings.
 - Patch ceiling as required.
 - Remove suspended ceiling with fluorescent lights and R-19 insulation.
 - Remove (E) door hardware with (N) H.C. jamb & lower.
 - Remove (E) toilet.
 - Remove (E) toilet dispenser, towel dispenser.
 - (N) paper towel dispenser.
 - (N) H.C. grab bar.
 - Enlarge (E) opening for 3'0" door girth wall H.C. jamb.
 - Remove (E) dashed plumbing cap lines as (E) H.C. accessible toilet.
 - (N) wall mounted lav.
 - (N) floor or required (N) R.T.S.B. Patch (E) floor as required (N) R.T.S.B.



FLOOR PLANS

DATE: 07/14/00
 DRAWN: M.K.B.
 CHECKED: M.K.B.
 JOB NO: 707

