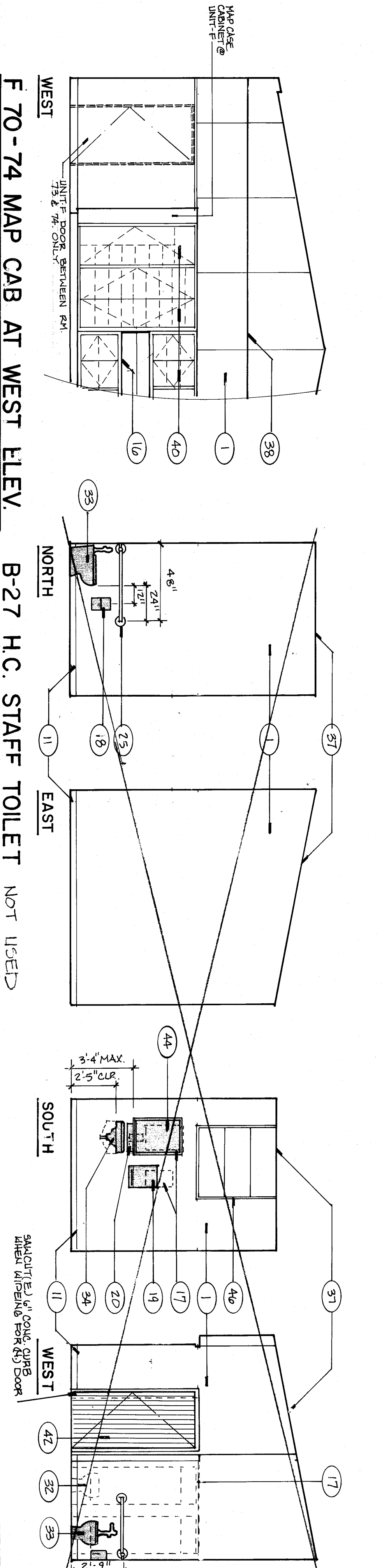
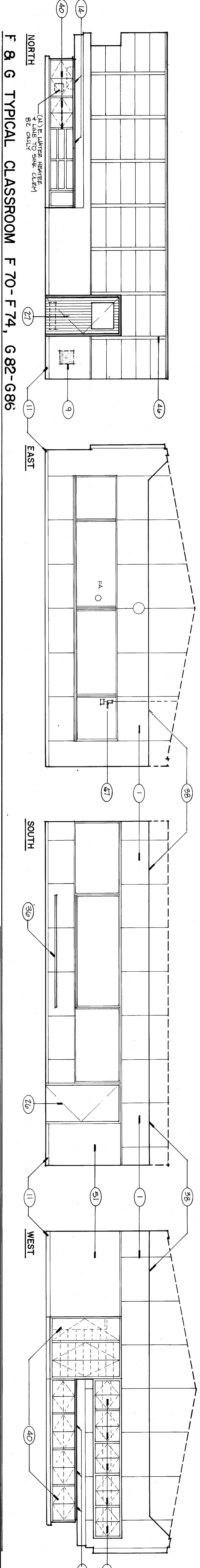
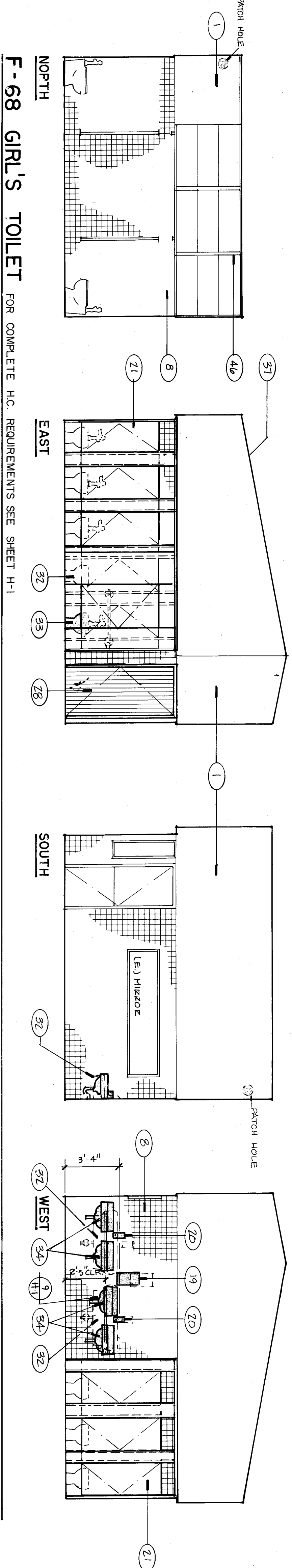


UNIT E INTERIOR ELEVATIONS



UNIT F & G INTERIOR ELEVATIONS

INTERIOR ELEVATIONS NOTES

1. Patch walls as required.
2. Remove dashed (E) Finish - paint.
3. Remove dashed (E) wall.
4. Finish to match (E).
5. (N) 2x stud wall with (E) cement fill/plaster.
6. (N) opening for door.
7. Remove window patch paint.
8. Repair (E) ceramic tile.
9. Remove (E) window patch paint.
10. Replace (E) window patch paint.
11. (N) R.T.S.B.
12. (N) door/frame and H.C.
13. Replace (E) sink and H.C.
14. Replace (E) sink and H.C. countertop & splash where occurs.
15. Remove dashed (E) cabinets and plumbing if any, patch walls as required.
16. (E) counter-tops.
17. Replace (E) toilet.
18. (N) toilet paper dispenser.
19. (N) soap dispenser.
20. (N) cabinet as per schedule.
21. (N) cabinet as per schedule.
22. (N) cabinet as per schedule.
23. (N) cabinet as per schedule.
24. (N) shelves at wall as per schedule.
25. (N) H.C. door hardware.
26. (N) H.C. door hardware.
27. (N) door/frame and hardware.
28. Replace (E) door with (N) H.C. door/frame and H.C. hardware.
29. (N) door/frame and H.C. hardware.
30. (N) door/frame and H.C. hardware.
31. (N) door/frame and H.C. hardware.
32. (N) door/frame and H.C. hardware.
33. (N) door/frame and H.C. hardware.
34. (N) door/frame and H.C. hardware.
35. (N) door/frame and H.C. hardware.
36. (N) door/frame and H.C. hardware.
37. (N) door/frame and H.C. hardware.
38. (N) door/frame and H.C. hardware.
39. (N) door/frame and H.C. hardware.
40. (N) door/frame and H.C. hardware.
41. Removed dashed (E) bench seat - patch wall as required.
42. (N) door/frame and H.C. hardware.
43. (N) door/frame and H.C. hardware.
44. (N) door/frame and H.C. hardware.
45. (N) door/frame and H.C. hardware.
46. (N) door/frame and H.C. hardware.
47. (N) door/frame and H.C. hardware.
48. (N) door/frame and H.C. hardware.
49. (N) door/frame and H.C. hardware.
50. (N) door/frame and H.C. hardware.
51. (N) door/frame and H.C. hardware.

ROBERT F. STUHR ARCHITECT INC.
 3121 CALIFORNIA AVE.
 BAKERSFIELD, CA 93304
 (805) 327-1632

PROJECT: ROBERT F. STUHR AIA C-1610
 WILLIAM A. MEIBY AIA C-16835
 DANNY E. ORDOZ AIA C-14728

DATE: 4/14/90

OF 19 SHEETS

INTERIOR ELEVATIONS- UNITS E, F & G, NOTES

VISTA EAST CONTINUATION HIGH SCHOOL 30 YEAR MODERNIZATION

815 EUREKA STREET
 KERN HIGH SCHOOL DISTRICT
 KERN COUNTY, CALIFORNIA

MARK	DATE	REVISIONS

JOB NO: 707
DRAWN: M.K.B.
CHECKED: M.K.B.