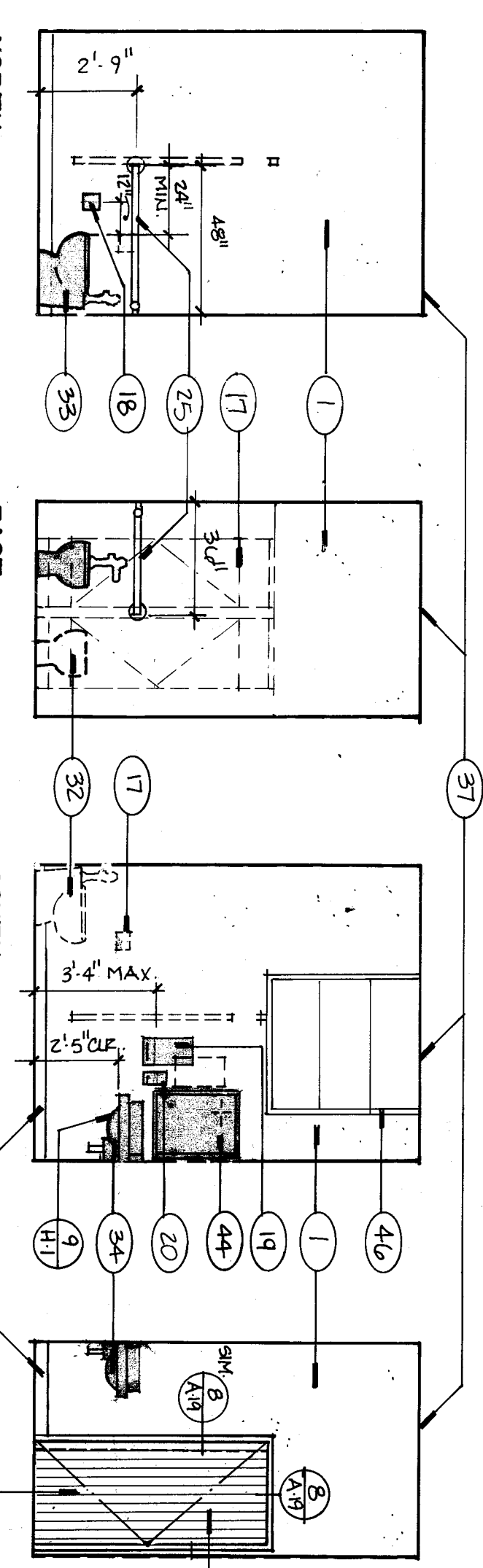
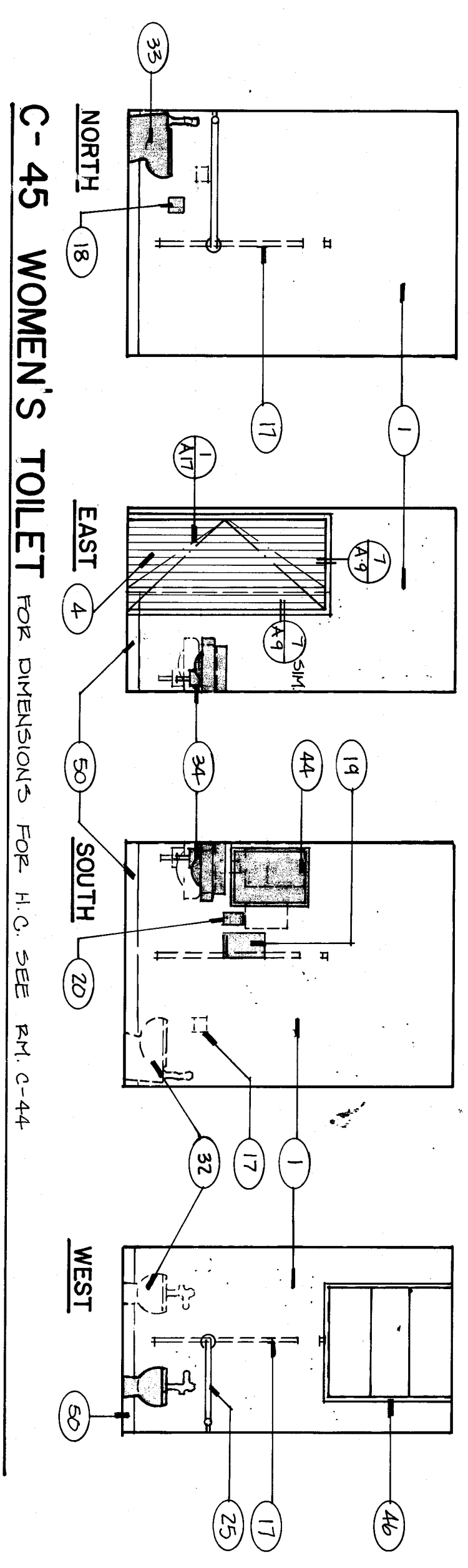


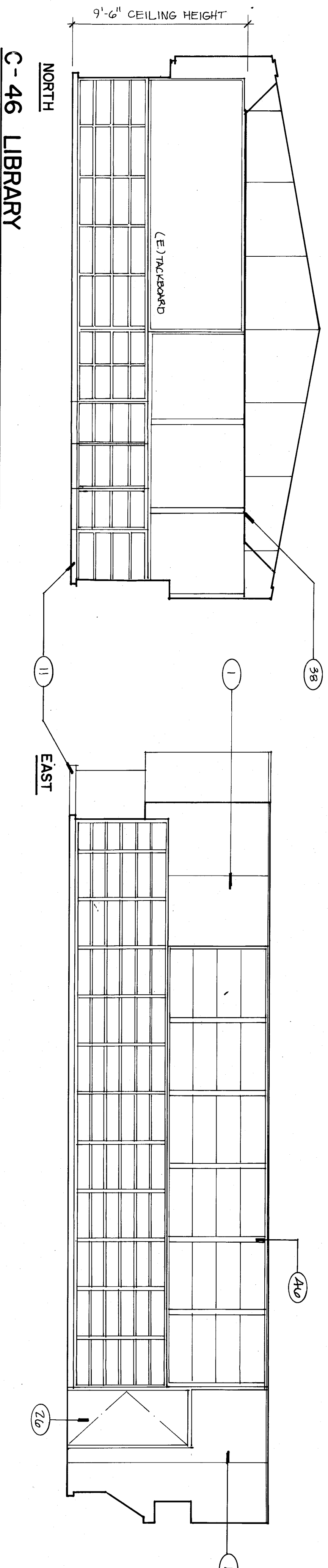
C-43 WOMEN'S LOUNGE



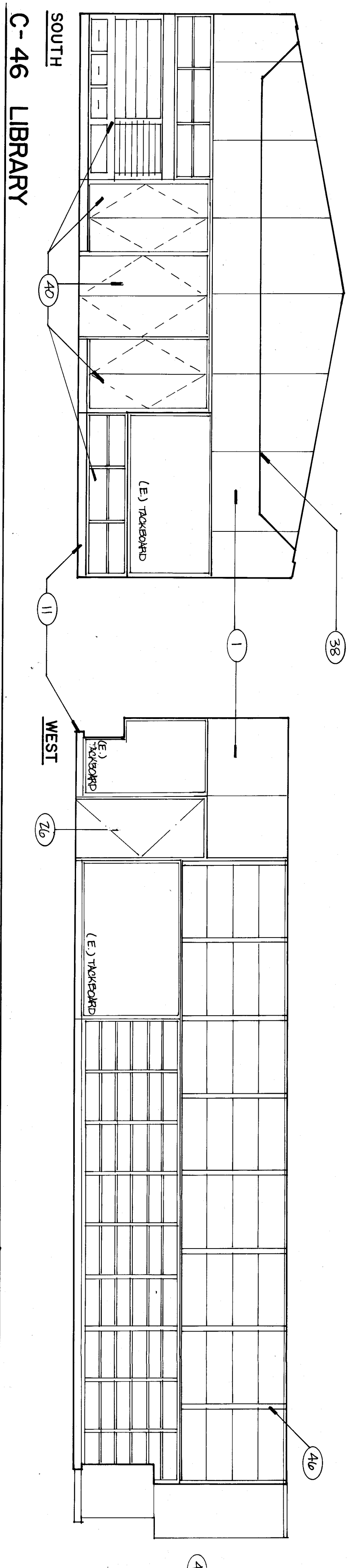
C-44 MEN'S TOILET



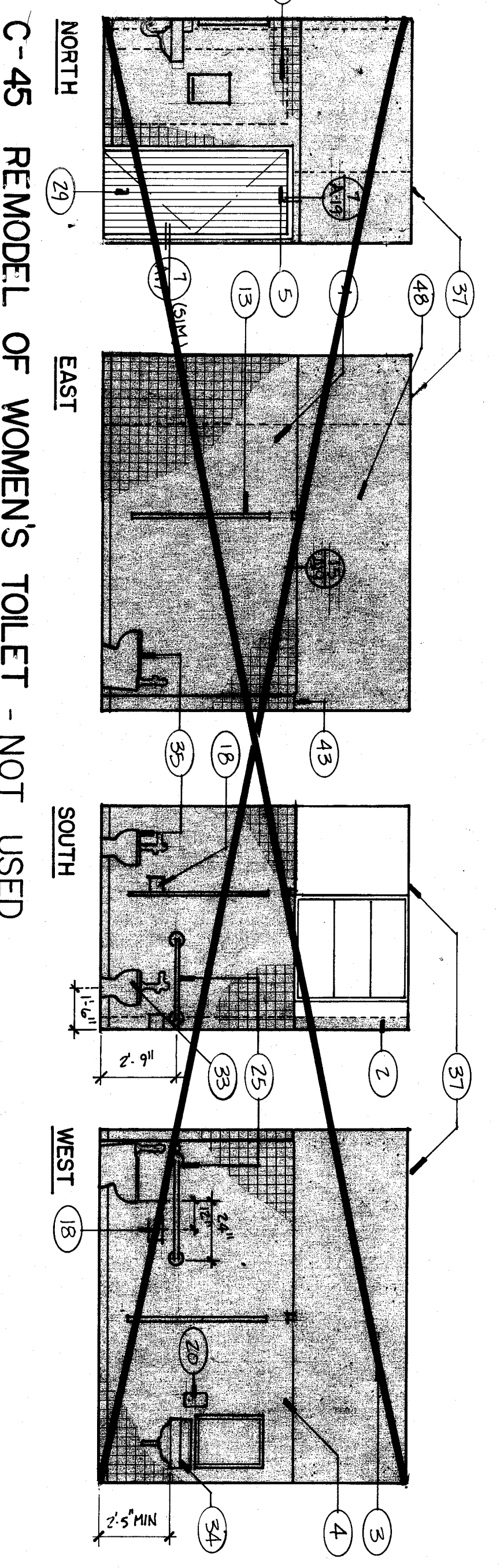
C-45 WOMEN'S TOILET FOR DIMENSIONS FOR H.C. SEE RMT C-44



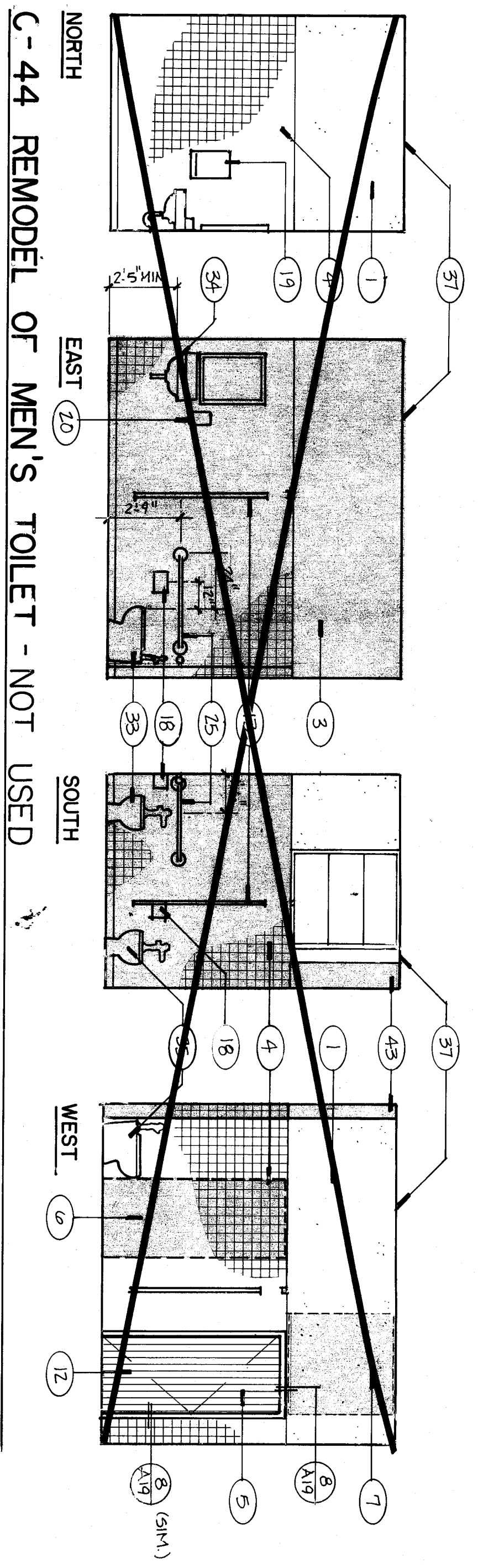
C-46 LIBRARY



C-46 LIBRARY



C-45 REMODEL OF WOMEN'S TOILET - NOT USED

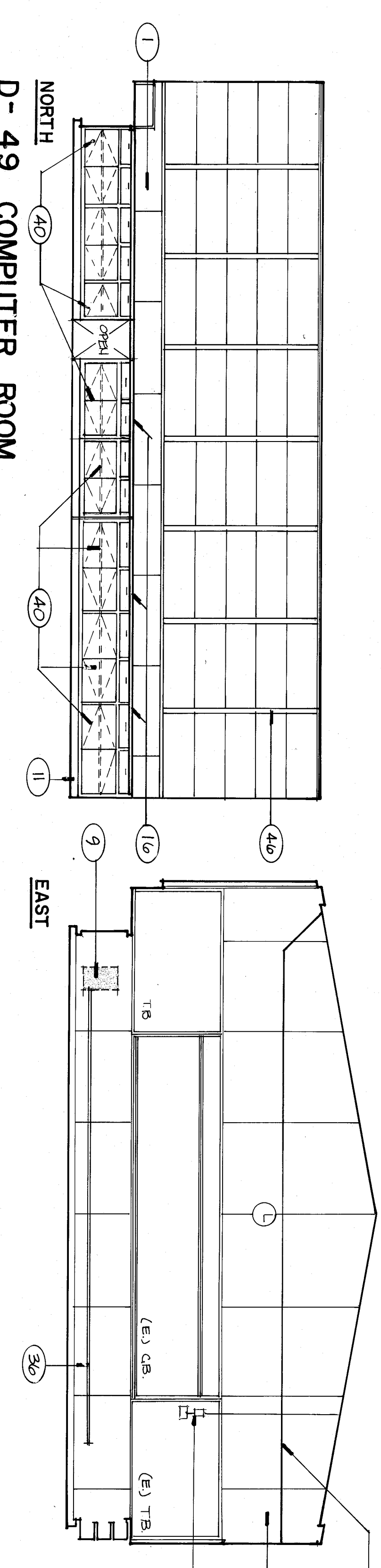


C-44 REMODEL OF MEN'S TOILET - NOT USED

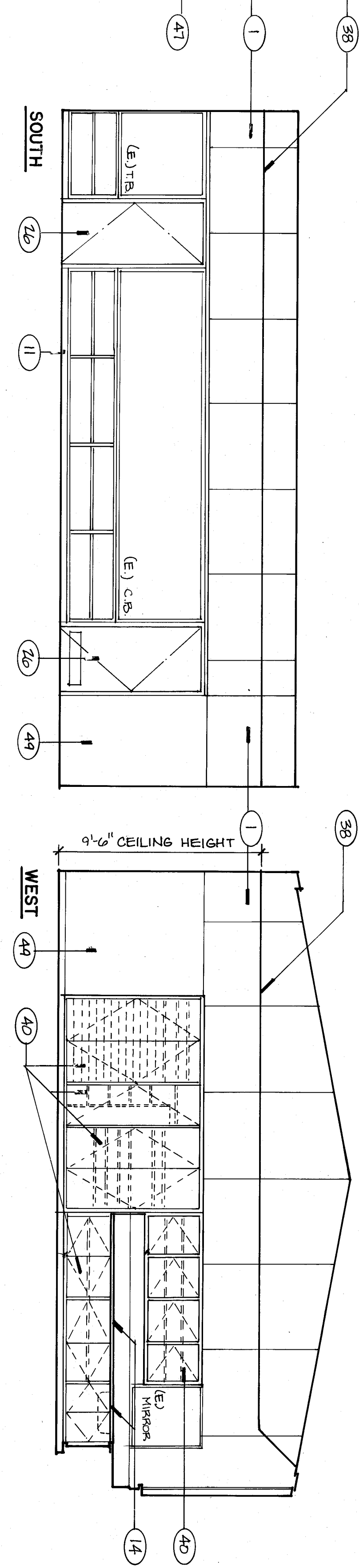
UNIT C INTERIOR ELEVATIONS

INTERIOR ELEVATIONS NOTES

1. Patch walls as required.
2. Remove dashed (E) wall.
3. Patch as required - paint.
4. ELIMINATE DOOR OPENING (FOR N) ADJACENT WALL - PAINT.
5. H.C. ACCESSIBLE DOOR - SEE SHEET C-44 FOR DIMENSIONS.
6. Remove (E) door, patch wall, match (E) finish - paint.
7. Paint: (E) window, patch wall, match (E) finish - paint.
8. Paint: (E) ceramic tile wainscot.
9. REMOVE VENTS IN WALL. W/2" AT 16" O.C. & 1/2" IN E.A. END. W/2" AT 16" O.C. & 1/2" IN W.A. END. W/2" AT 16" O.C. & 1/2" IN MIDDLE. PREP - PAINT (E) DOOR & TRIM. T.S.B.
10. H.C. ACCESSIBLE DOOR - SEE SHEET C-44 FOR DIMENSIONS.
11. (N) H.C. door/frame and H.C. hardware.
12. (N) toilet partitions.
13. (N) toilet partitions.
14. (N) toilet partitions.
15. (N) toilet partitions.
15. Remove dashed (E) cabinets and plumbing if required. Can any plumbing lines - paint walls.
16. (E) computer.
17. (E) computer.
18. (E) computer.
19. (E) computer.
20. (E) computer.
21. (E) computer.
22. (E) computer.
23. (E) computer.
24. (E) computer.
25. (E) computer.
26. (E) computer.
27. (E) computer.
28. Replace (E) door with (N) H.C. door/frame and H.C. hardware.
29. (N) solid core wood door.
30. (N) H.C. frame and H.C. hardware.
31. (N) H.C. door/frame and H.C. hardware.
32. (N) H.C. door/frame and H.C. hardware.
33. (N) H.C. door/frame and H.C. hardware.
34. (N) H.C. door/frame and H.C. hardware.
35. (N) H.C. door/frame and H.C. hardware.
36. (N) H.C. door/frame and H.C. hardware.
37. Patch ceiling as indicated.
38. (N) T-bar suspended ceiling with fluorescent lights and R-19 insulation.
39. (N) ceiling gypsum w/ acoustic tile surface.
40. (N) door/frame and hardware.
41. Remove dashed (E) bench seat - patch wall as required.
42. (E) closet door enlarge opening for (N) entry into remodel.
43. (N) toilet, patch wall.
44. (N) mirror.
45. Relocate (E) dashed cabinet to (N) location adjacent to (E) counter top w/ (N) laminate plastic countertop.
46. (E) THERMOSTATS W/ (N) PROGRAMMABLE UNITS.
47. (E) THERMOSTATS W/ (N) PROGRAMMABLE UNITS.
48. (E) THERMOSTATS W/ (N) PROGRAMMABLE UNITS.
49. REMOVE UNO.WALL. PATCH AS REQ'D. PREP PLV.O. WALL - PAINT & COVER SHEET WALL.
50. (E) THERMOSTATS W/ (N) PROGRAMMABLE UNITS.



D-49 COMPUTER ROOM



UNIT D INTERIOR ELEVATIONS

ROBERT F. STUHR ARCHITECT INC.
 3121 CALIFORNIA AVE.
 BAKERSFIELD CA.
 (805) 327-1632

EXP-
 ROBERT F. STUHR AIA C-1610
 WILLIAM J. MELBY AIA C-16835
 DANNY E. ORDIZ AIA C-14728

TITLE: 24 & 1388 USC
 1/7/14

INTERIOR ELEVATIONS - UNITS C & D, NOTES

VISTA EAST CONTINUATION HIGH SCHOOL 30 YEAR MODERNIZATION
 815 EUREKA STREET
 KERN HIGH SCHOOL DISTRICT
 KERN COUNTY, CALIFORNIA

CHECK AND VERIFY ALL DIMENSIONS BEFORE PROCEEDING WITH THE WORK. REPORT DISCREPANCIES TO THE ARCHITECT. CONFORM TO USC.

MARK	DATE	REVISIONS
△		
△		
△		

JOB NO. 707
 DRAWN: M.K.B.
 CHECKED:
 DATE: 1/14/90
 OF 19 SHEETS