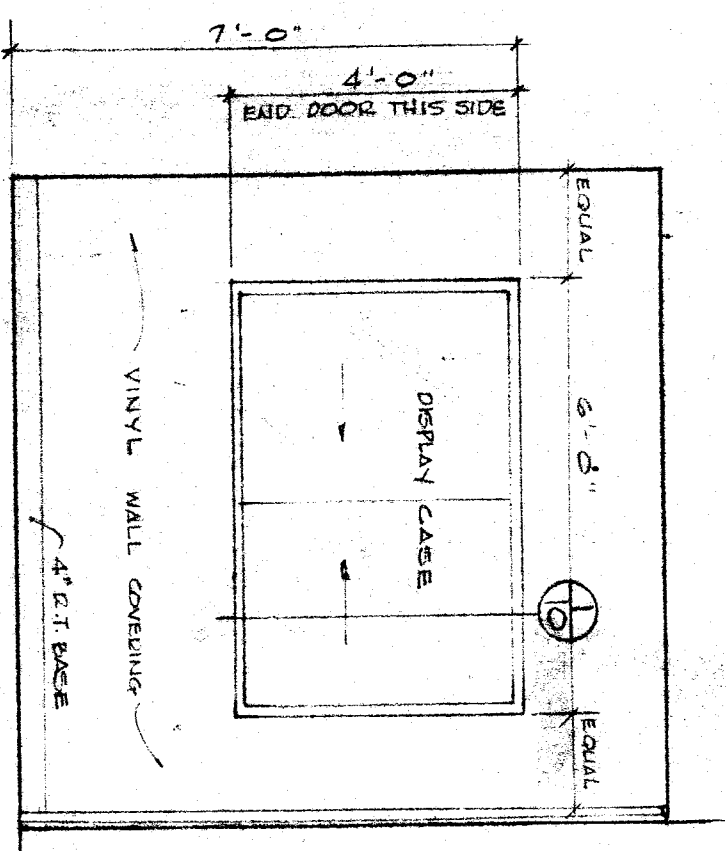
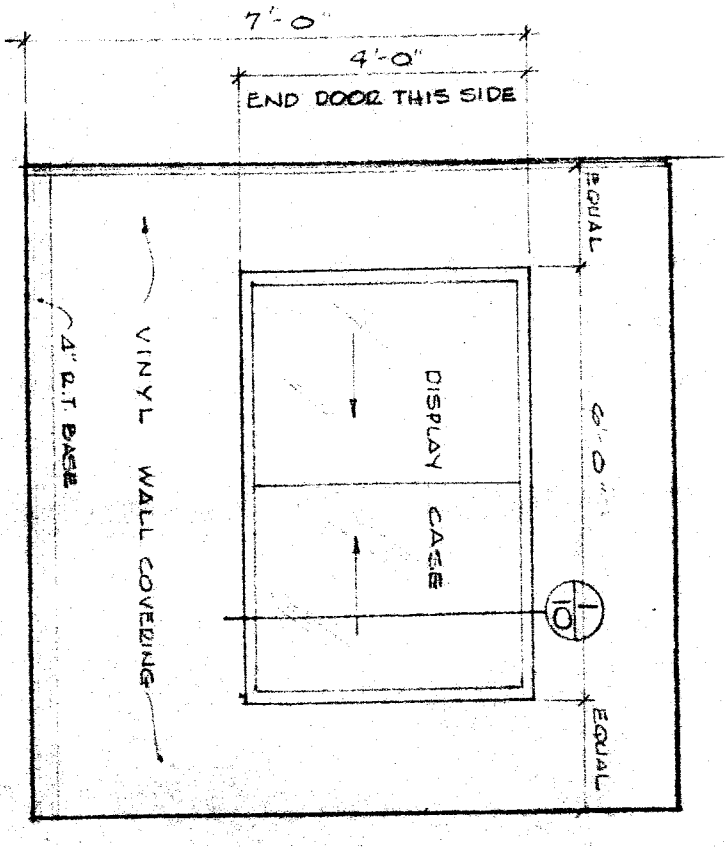


CAFETORIUM NORTH
3/8" = 1'-0"

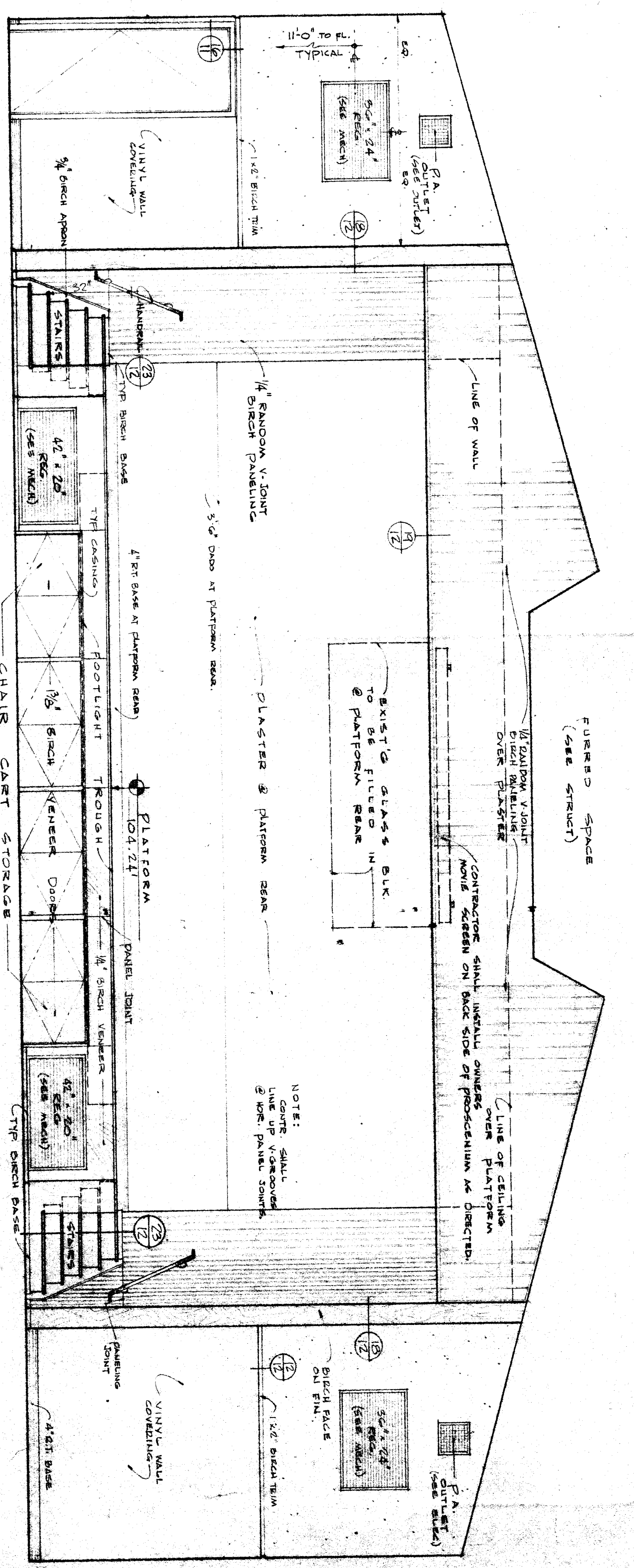
SPECIAL NOTE: WALLS WHICH ARE TO BE REMOVED OR RECONSTRUCTED SHALL BE FINISHED WITH PLASTER, VINYL WALL COVERING, ETC.



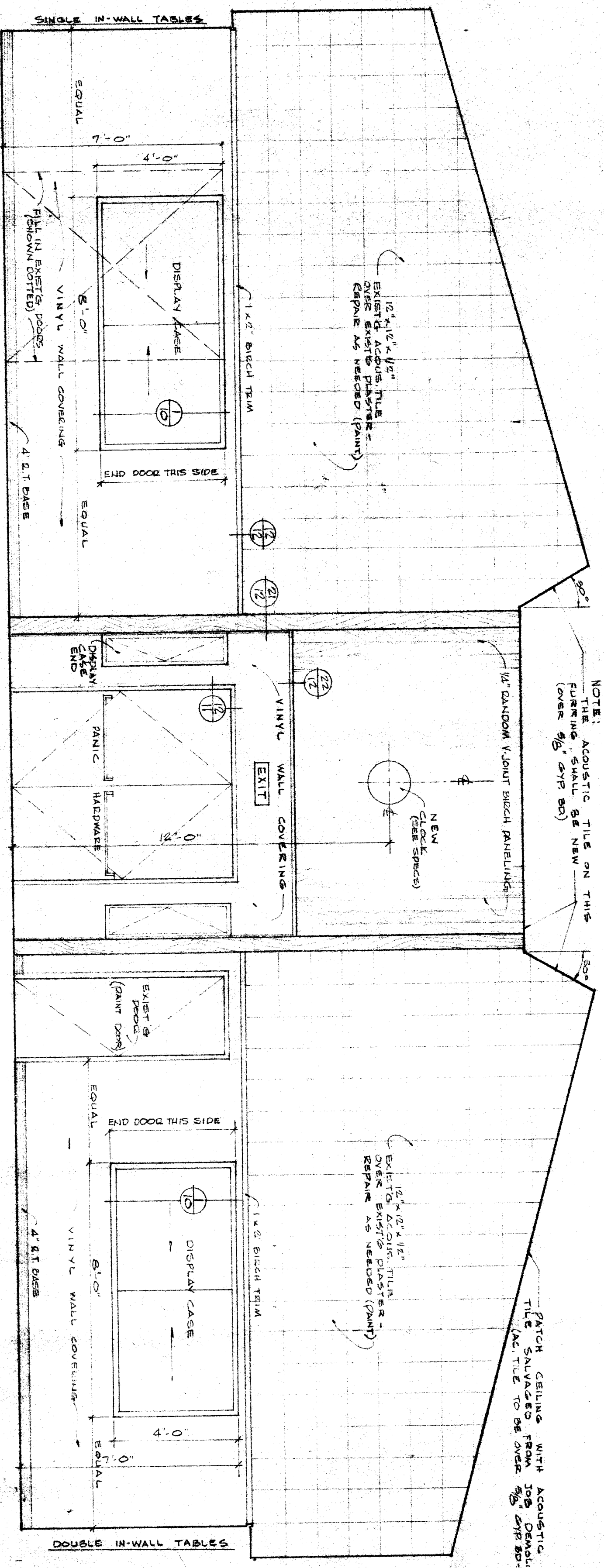
ENT FOYER NORTH
3/8" = 1'-0"



ENT FOYER SOUTH
3/8" = 1'-0"

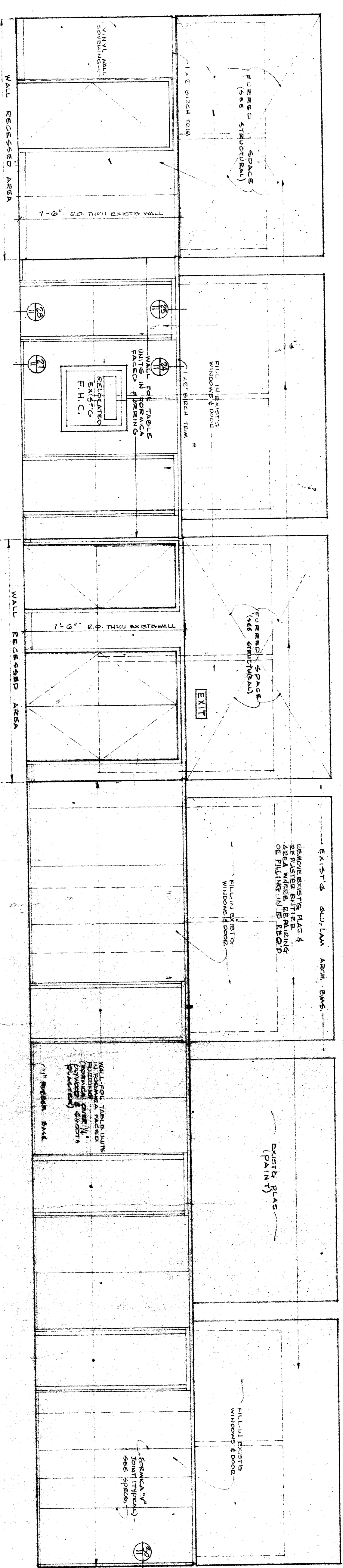


CAFETORIUM EAST
3/8" = 1'-0"

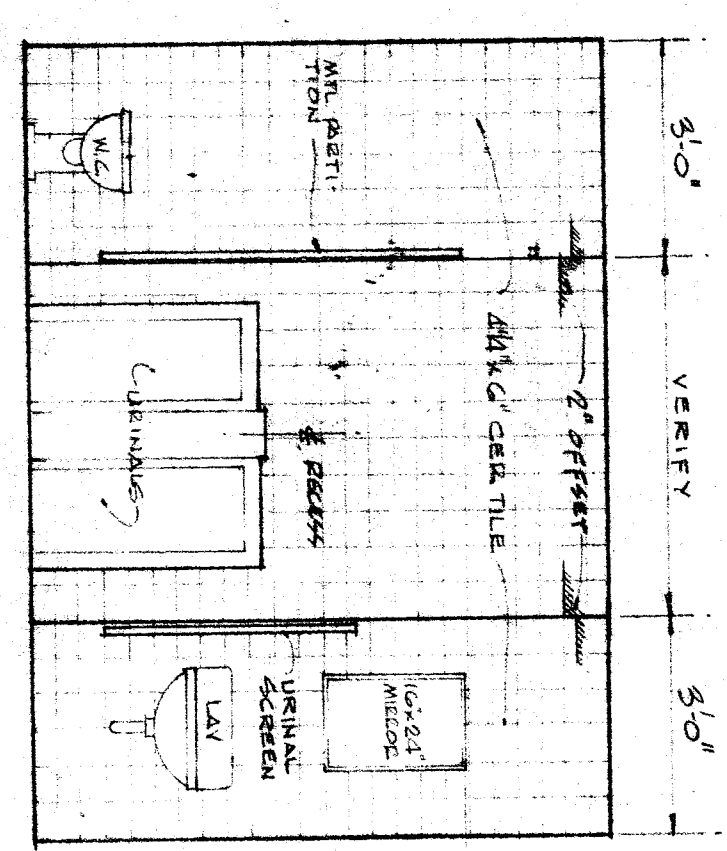


CAFETORIUM WEST
3/8" = 1'-0"

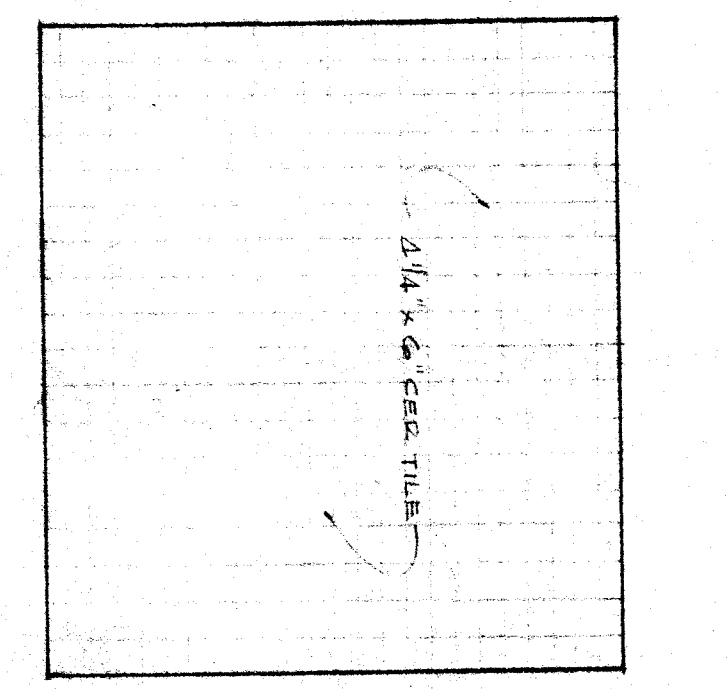
ENT FOYER WEST
3/8" = 1'-0"



CAFETORIUM SOUTH
3/8" = 1'-0"



BOYS NORTH
3/8" = 1'-0"



BOYS EAST
3/8" = 1'-0"

BAKERSFIELD CITY SCHOOL DISTRICT APPROVED BY: _____ DATE: _____

DESIGNED BY: _____ DATE: _____

REVISIONS

NO.	DATE	BY	REVISION
1	6-22-60	RDV	REVISED
2	6-25-60	RDV	REVISED

EDDY AND PANTER ARCHITECTS A. I. A.
2901 H. Street Bakersfield, California FA. 59048

INTERIOR ELEVATIONS
MULTI-USE BLDG. LINCOLN JR. HIGH SCHOOL
BAKERSFIELD CITY SCHOOL DISTRICT
KERN COUNTY CALIFORNIA

