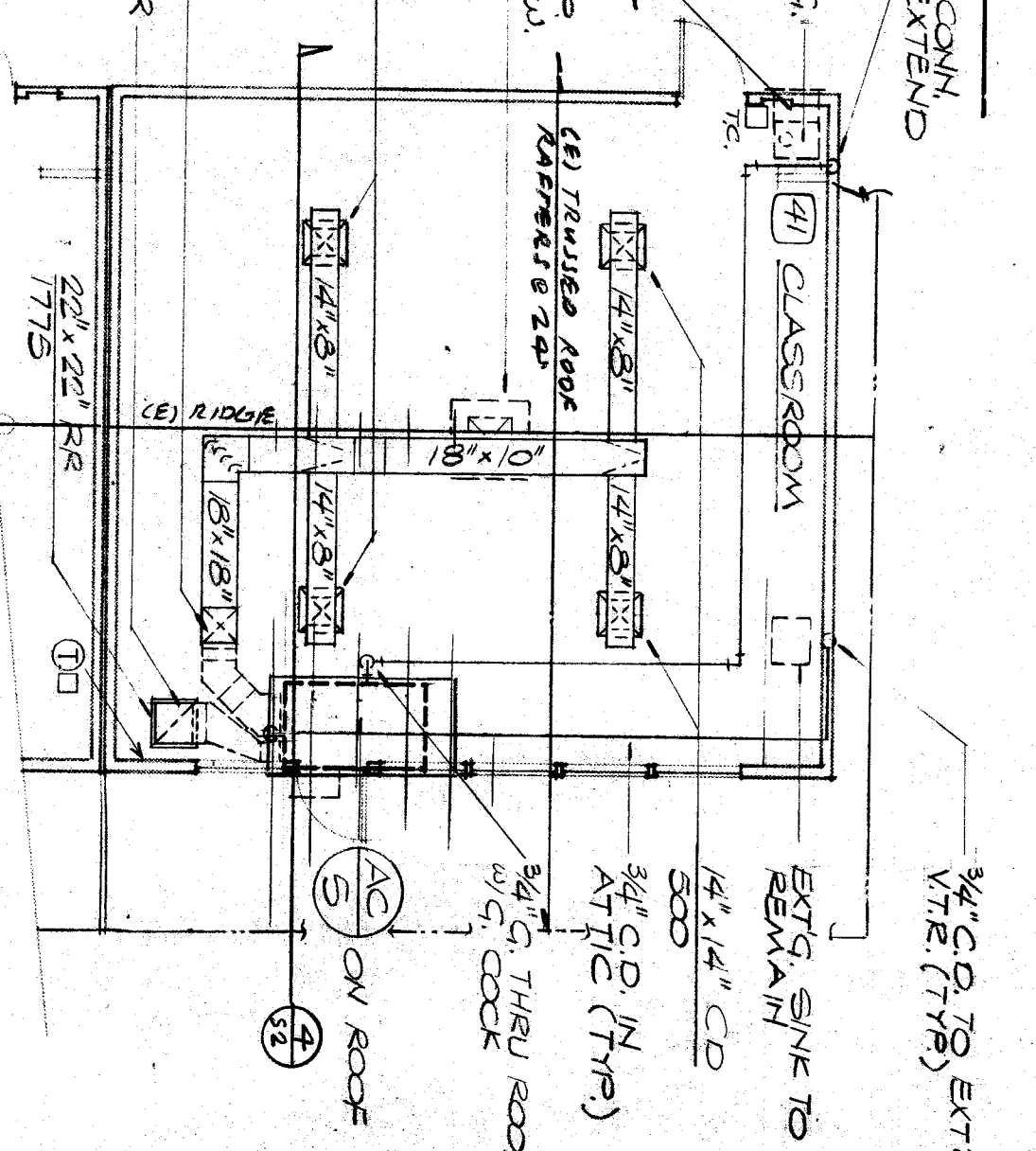
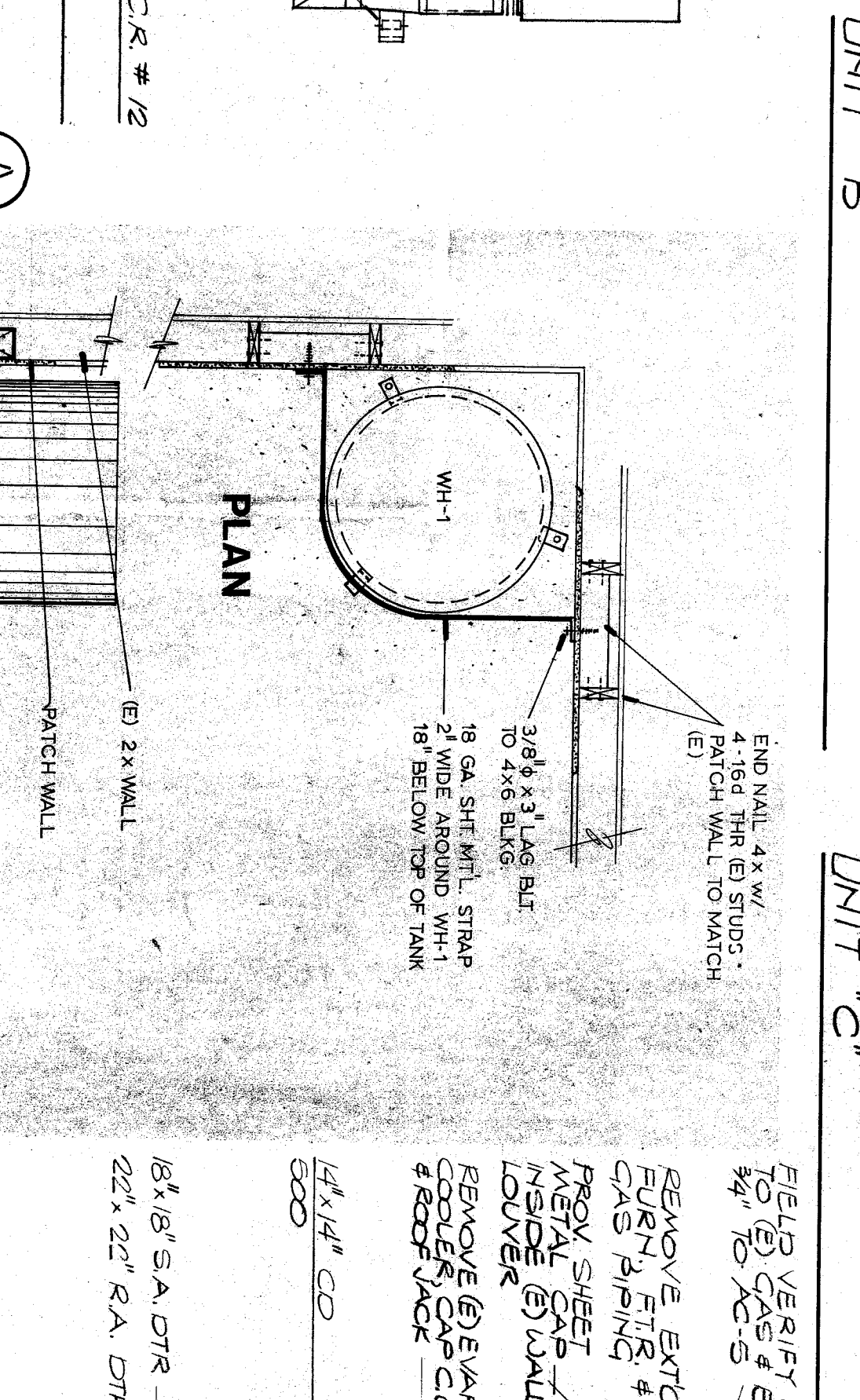
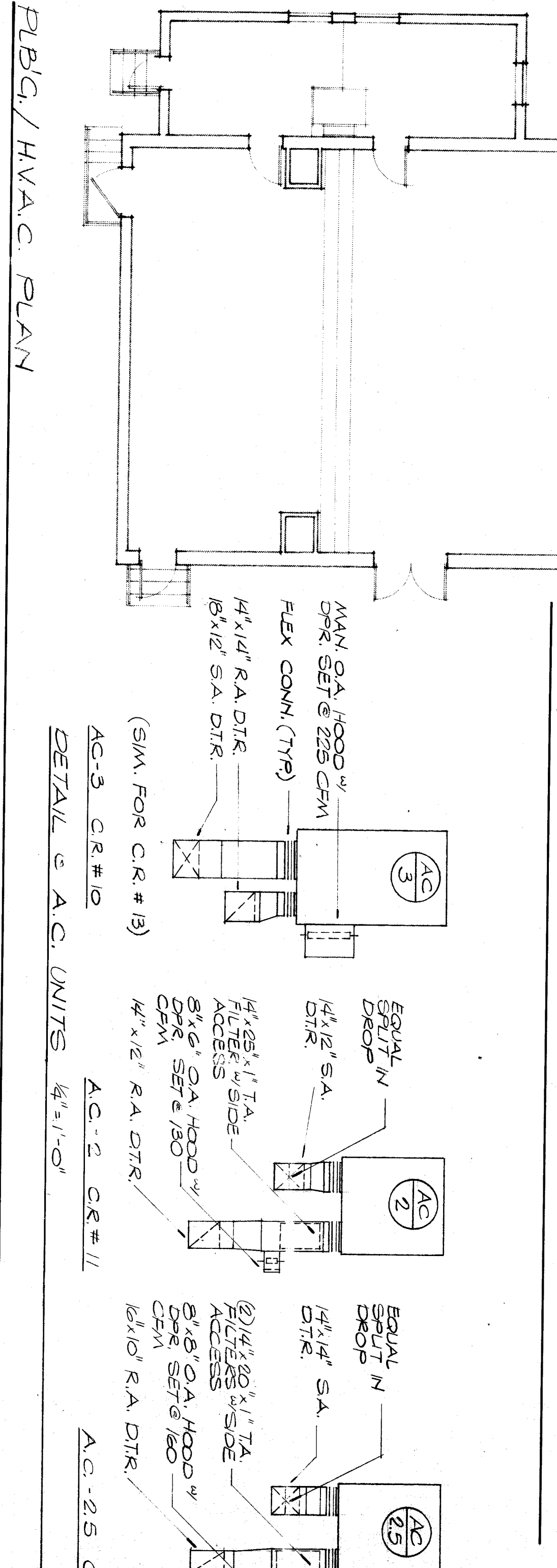
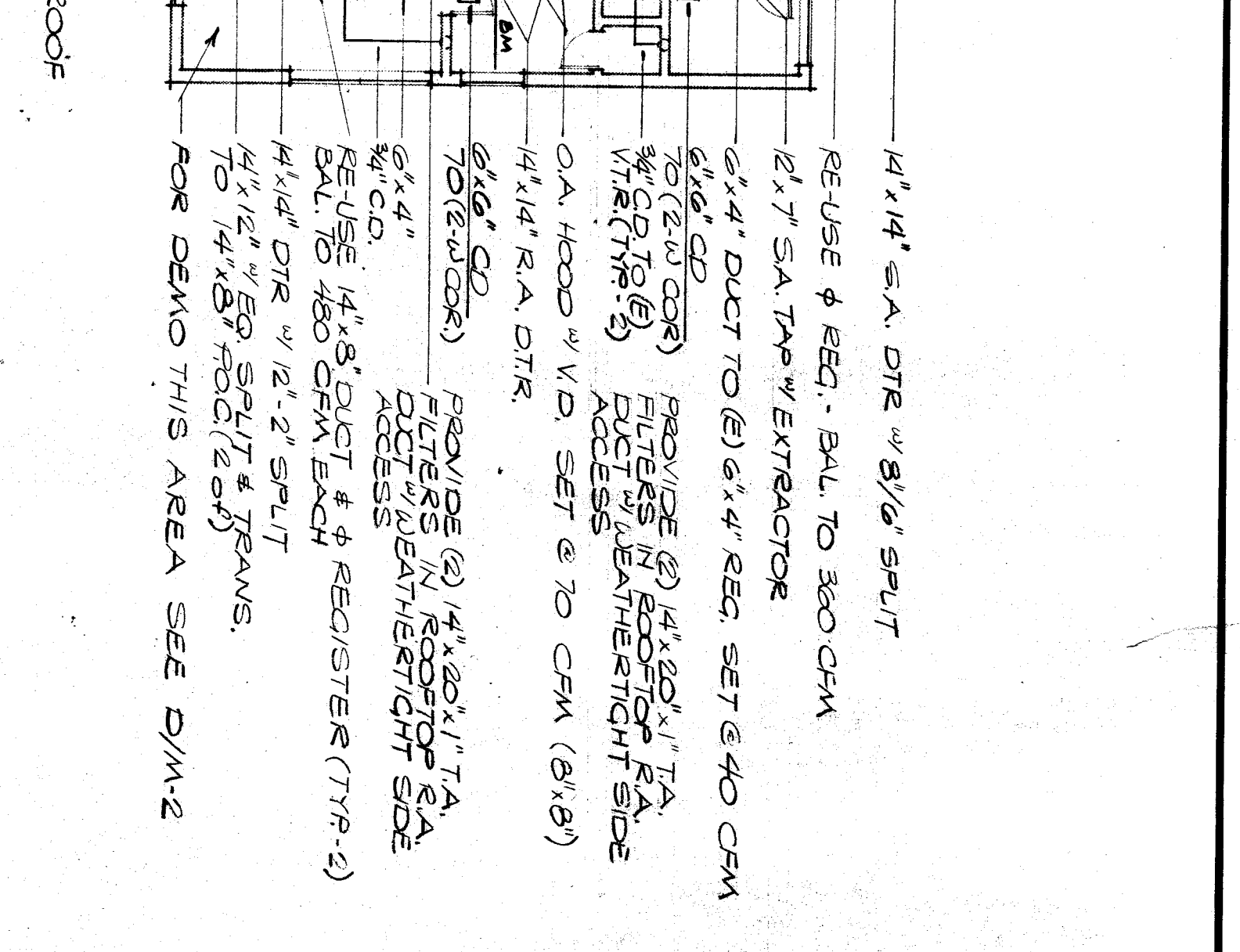
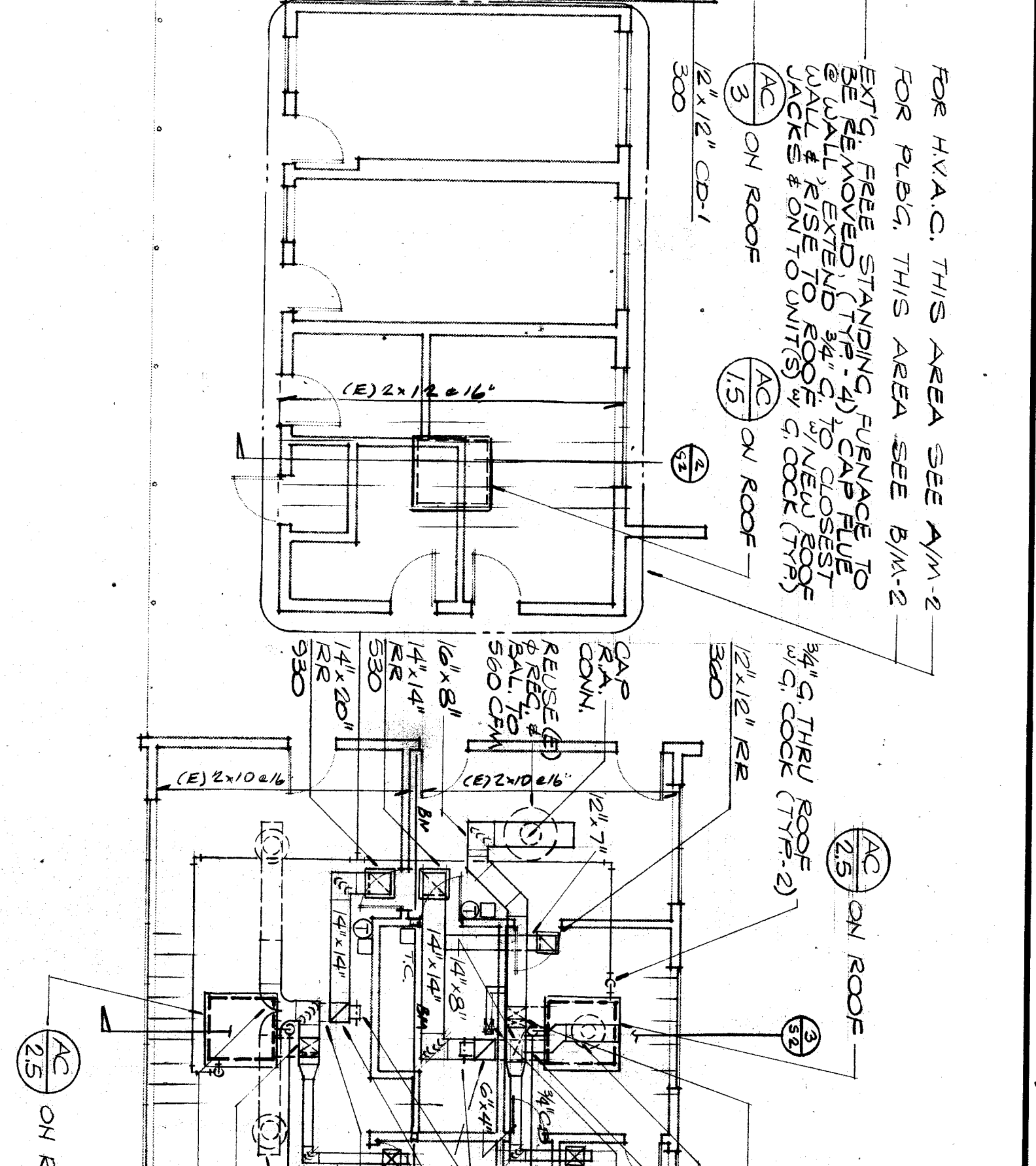
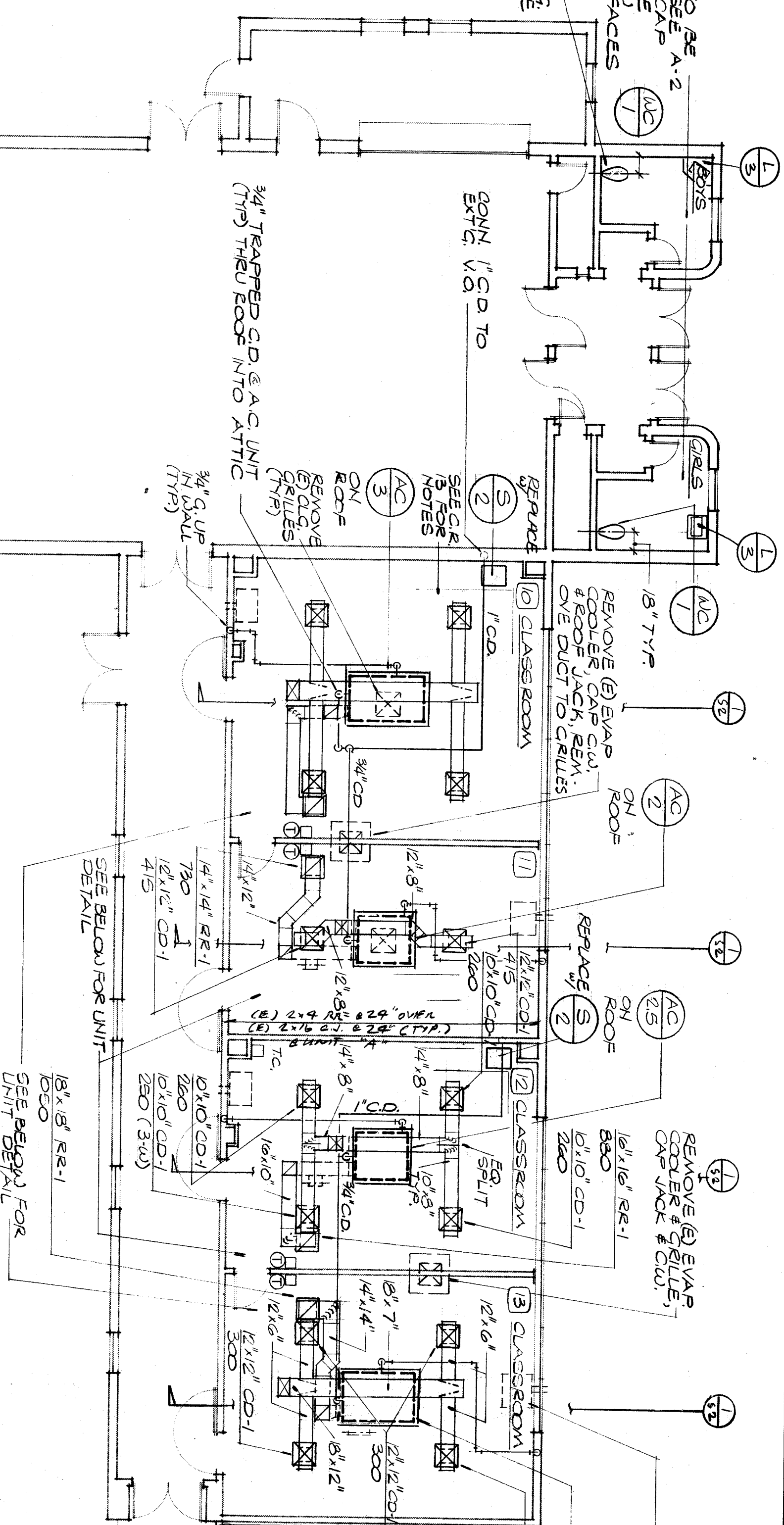


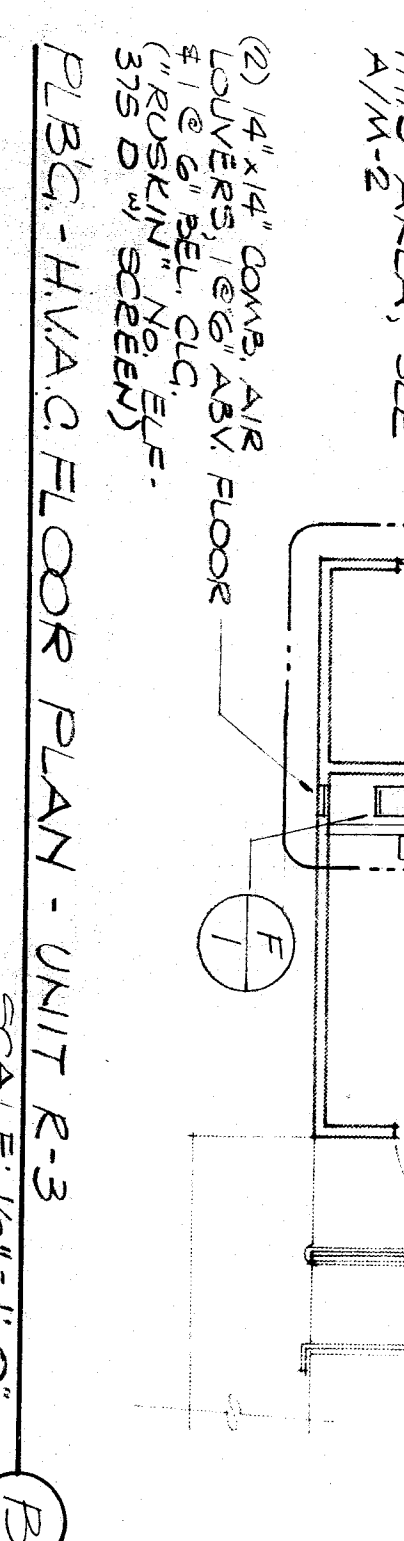
TOILETS TO BE REMOVED FROM SCOPE OF WORK. ALL TOILET FIXTURES TO BE REMOVED FROM WALLS & FLOORS. REMOVE & DISPOSE OF ALL TOILET FIXTURES (SINKS, TUBS, SHOWERS, ETC.) FROM WALLS & FLOORS.



All mechanical equipment shall be braced or anchored to resist a horizontal force in any direction using the following criteria:
 Fixed Equipment on Grade: 20% of Operating Weight
 Fixed Equipment on Structure: 30% of Operating Weight
 Emergency Power Equipment on Structure: 40% of Operating Weight
 Flexible Mounted Equipment: 60% of Operating Weight
 Small towers: Vertical force - Use 1/3 X horizontal force.
 Where anchorage details are not shown on the drawings of this set, installation shall be subject to the approval of the Office of the State Architect.

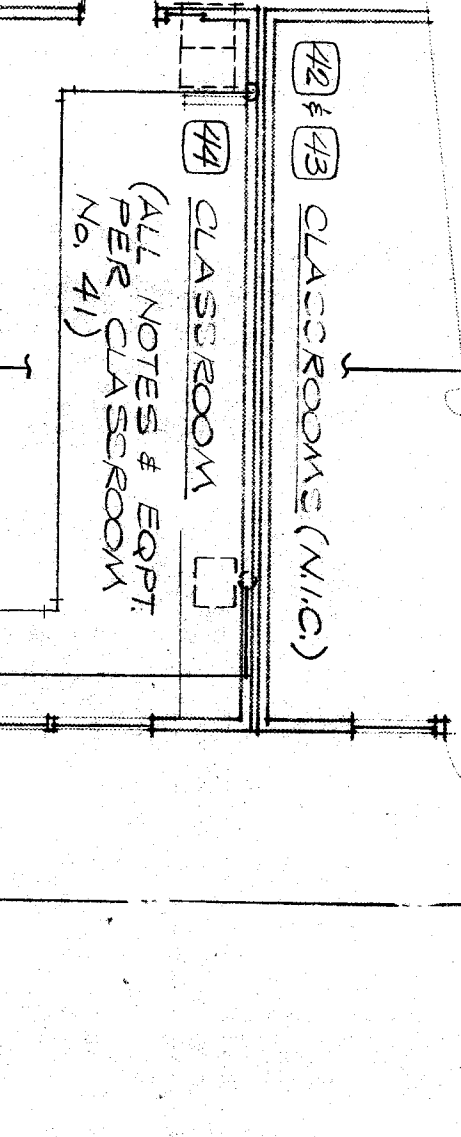
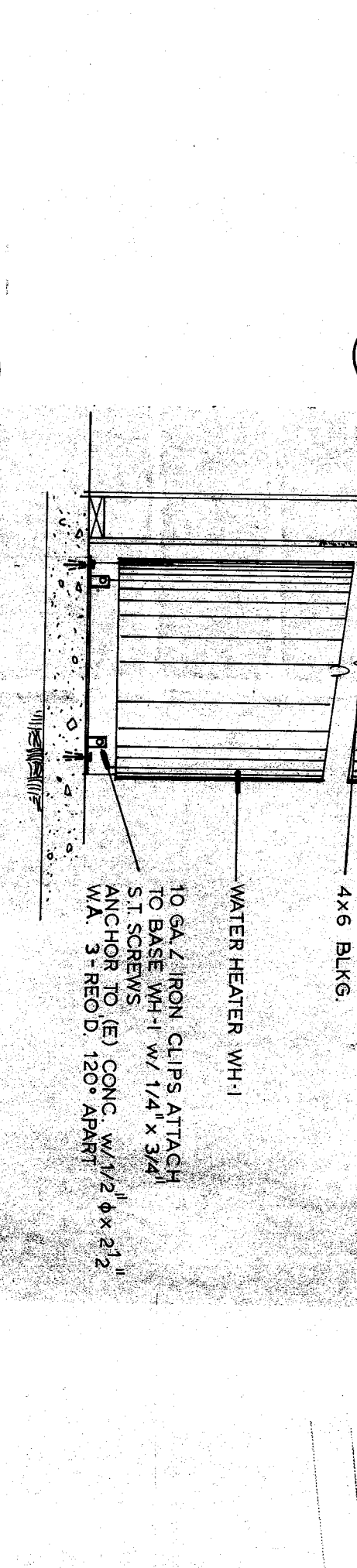
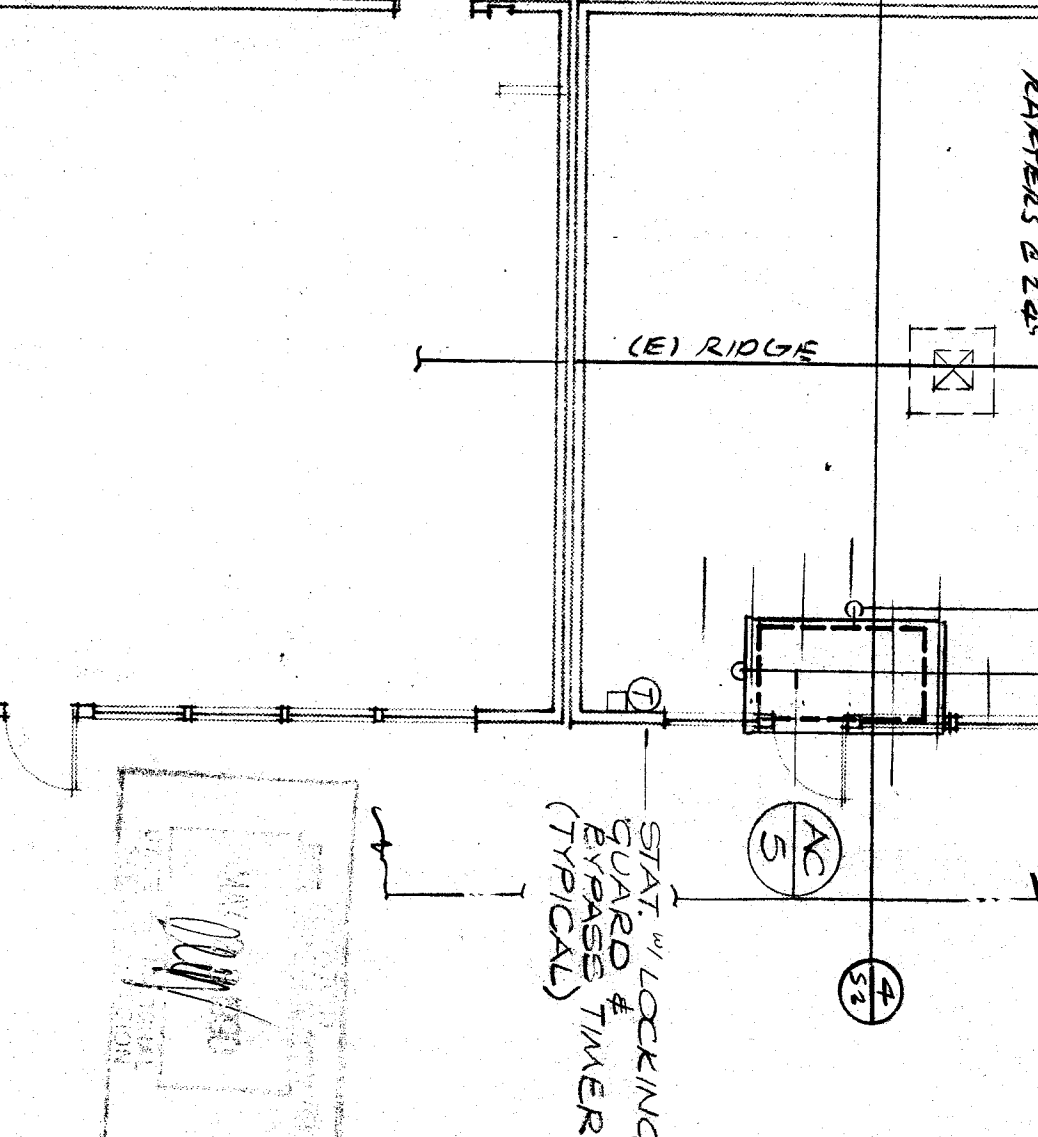
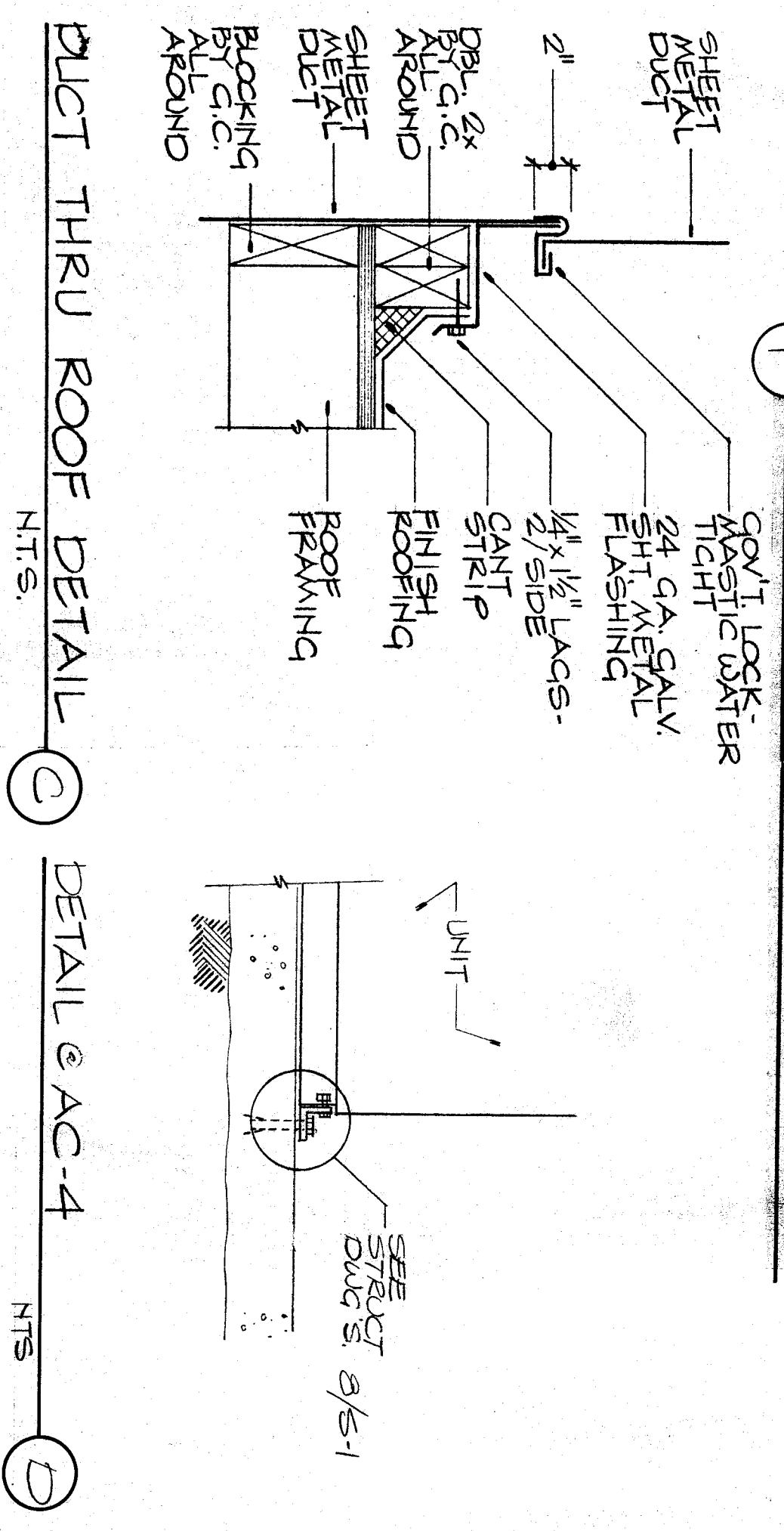
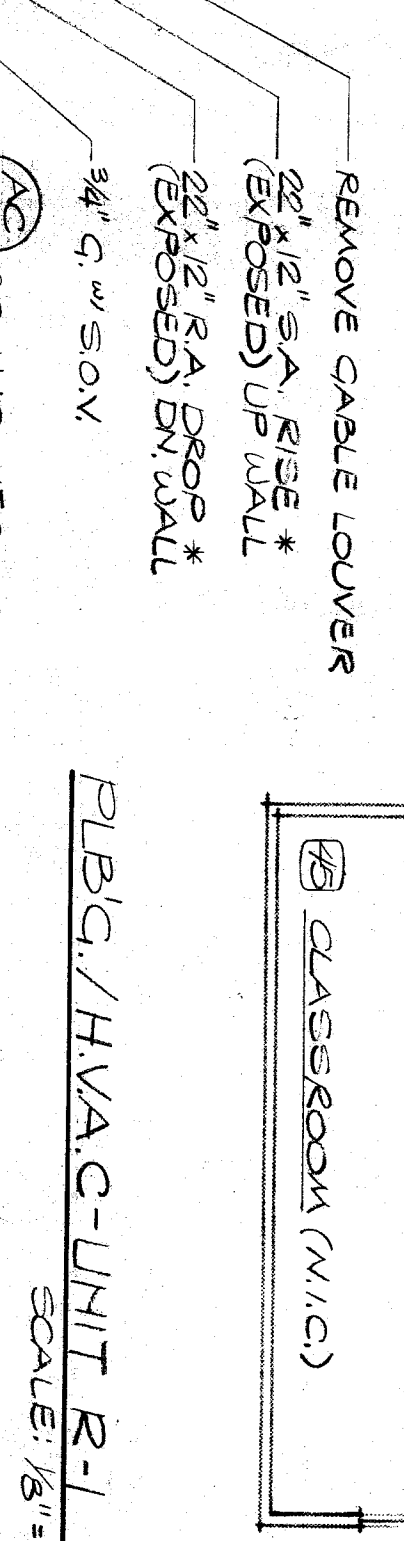
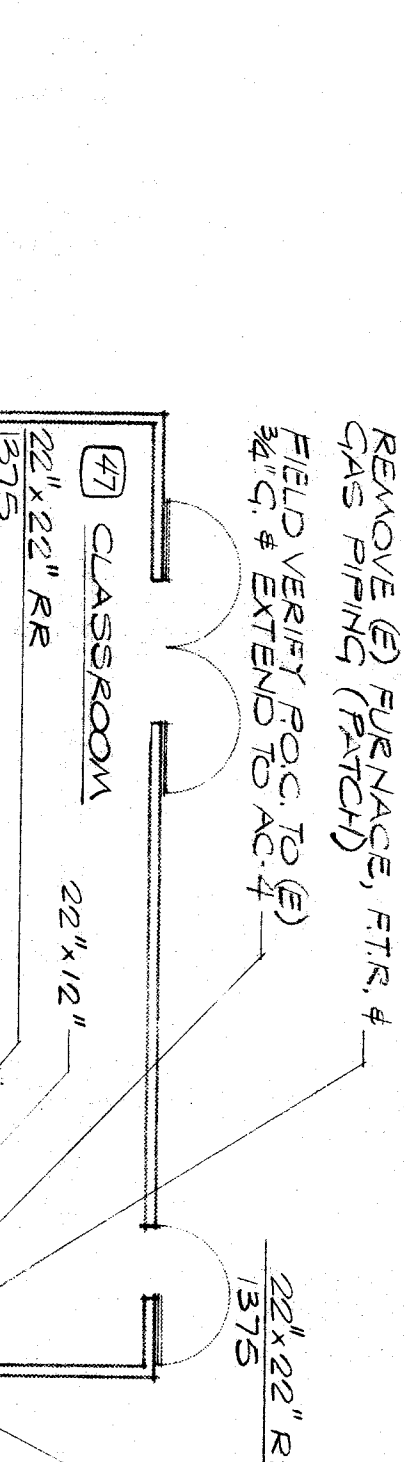
MECHANICAL EQUIPMENT SCHEDULE

AC-1	"Carrier" Mod. 48N17018 rooftop Gas/Electric unit, 9.5 S.E.R.R., 650 C.F.M. @ .5" S.P., side discharge, "Sausage" R40-50 springs, 40 M.B.H. nat gas heating input, 77.58 AVE. 11.5 Unit F.L.A. @ 208/230V.-1ph., 450#. OPTICAL FILTER BACK. S.P. 1.0-1.5 #.
AC-2	"Carrier" Mod. 48N17024 Same as AC-1 except 850 C.F.M., 14.2 F.L.A. @ 208/230V.-1ph., 455 #.
AC-3	"Carrier" Mod. 48N17030 Same as AC-1 except 1030 C.F.M., 16.8 F.L.A. @ 208/230V.-1ph., 470 #.
AC-4	"Carrier" Mod. 48D3004 Same as AC-1 except 1200 C.F.M. @ .38" S.P., 53.6 F.L.A. @ 208/230V.-1ph., 74 M.B.H. nat. gas heating input, 848#. OPTICAL O.A. HOOD, INTEGRAL FILTERS
AC-5	"Carrier" Mod. 48D3005 Same as AC-3 except 1600 C.F.M. @ .5" S.P., 80.1 F.L.A. @ 208/230V.-1ph., 558 #.
AC-6	"Carrier" Mod. 48D3006 Same as AC-3 except 2000 C.F.M. @ .4" S.P., 96.4 F.L.A. @ 208/230V.-1ph., 578 #.



REGISTER SCHEDULE

CD	RND	SURFACE	W/EXTRACTORS
CD-1	RND-FTE	T-BAR	W/EXTRACTORS
RR-1	3RD	T-BAR	W/EXTRACTORS
MS	3RD	SIDEMALL	



MECHANICAL & PLUMBING PLANS/SCHEDULES

RAFER JOHNSON SCHOOL
1001 10TH ST., BAKERSFIELD, CA.

BAKERSFIELD CITY SCHOOL DISTRICT
KERN COUNTY, CALIFORNIA

IDENTIFICATION STAMP
Department of General Services
Office of the State Architect
August 24, 2000
Structural Safety, General
5328881

3121 CALIFORNIA AVE.
BAKERSFIELD, CA.
(805) 327-1632

ROBERT F. STUHR ARCHITECT INC.

ROBERT F. STUHR AIA C-1610
WILLIAM J. MELBY AIA C-16835
DANNY E. ORDOZ AIA C-14728

CHECK AND VERIFY ALL DIMENSIONS BEFORE PROCEEDING WITH THE WORK. REPORT DISCREPANCIES TO THE ARCHITECT CONFORM TO USC TITLE 8, 324

MARK DATE REVISIONS

JOB NO. 044
DRAWN R.D.
CHECKED J.S.
DATE

1 OF 2 SHEETS