

PROPERTY DESCRIPTION

THAT PROPERTY LOCATED AT: 3800 JEWETT AVENUE BAKERSFIELD, KERN COUNTY, CALIFORNIA
 THAT PROPERTY LOCATED AT: 1001 10th STREET BAKERSFIELD, KERN COUNTY, CALIFORNIA

BUILDING CLASSIFICATION / DATA

OCCUPANCY / USE: B 2
 TYPE OF CONSTRUCTION: TYPE V - NON-FIRED
 FIRE ZONE: 3
 UNIFORM BUILDING CODE: 1988
 CALIFORNIA CODE OF REGULATIONS: TITLES 19, 21 & 24

PERMITS & CODE COMPLIANCE

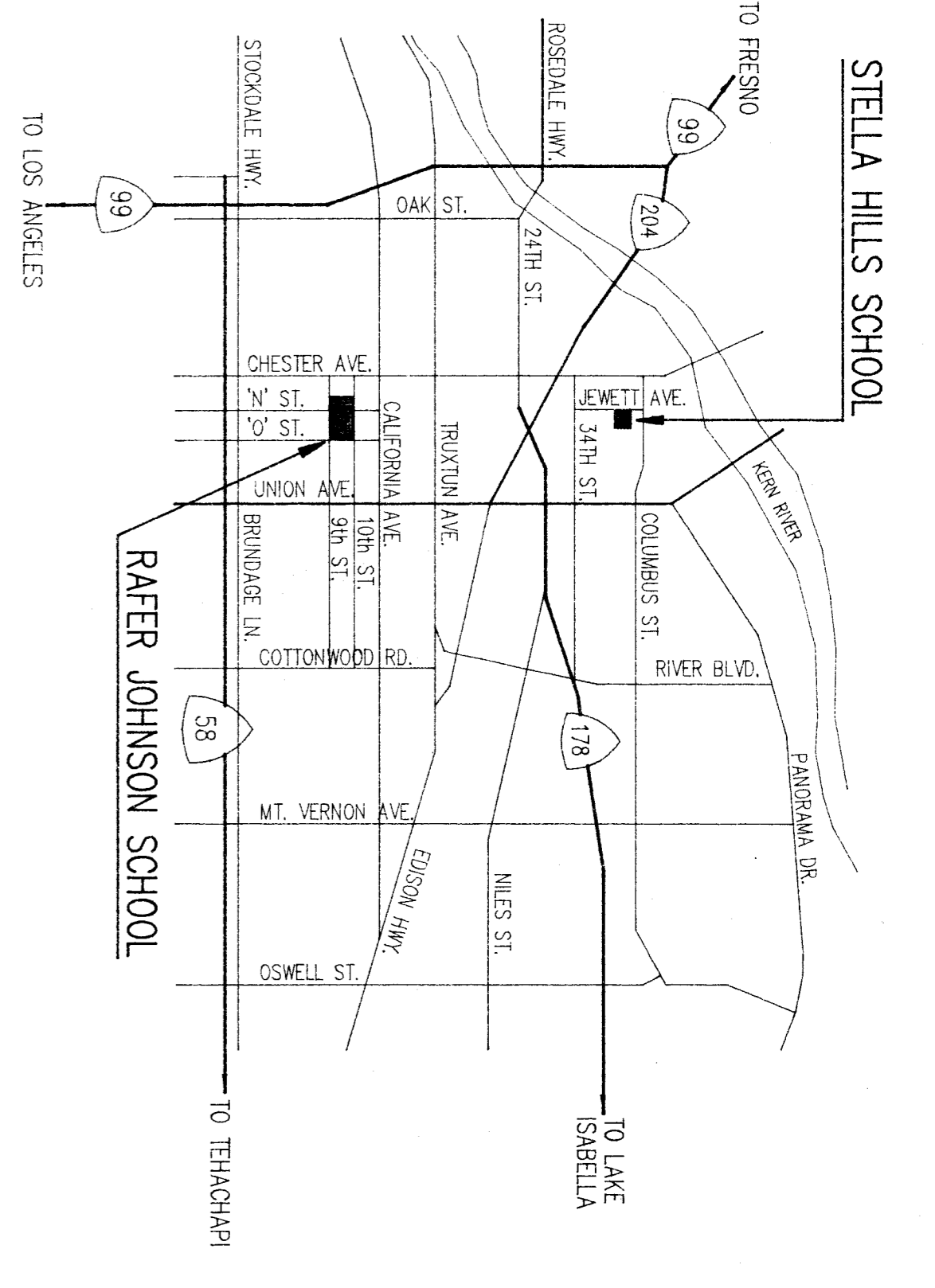
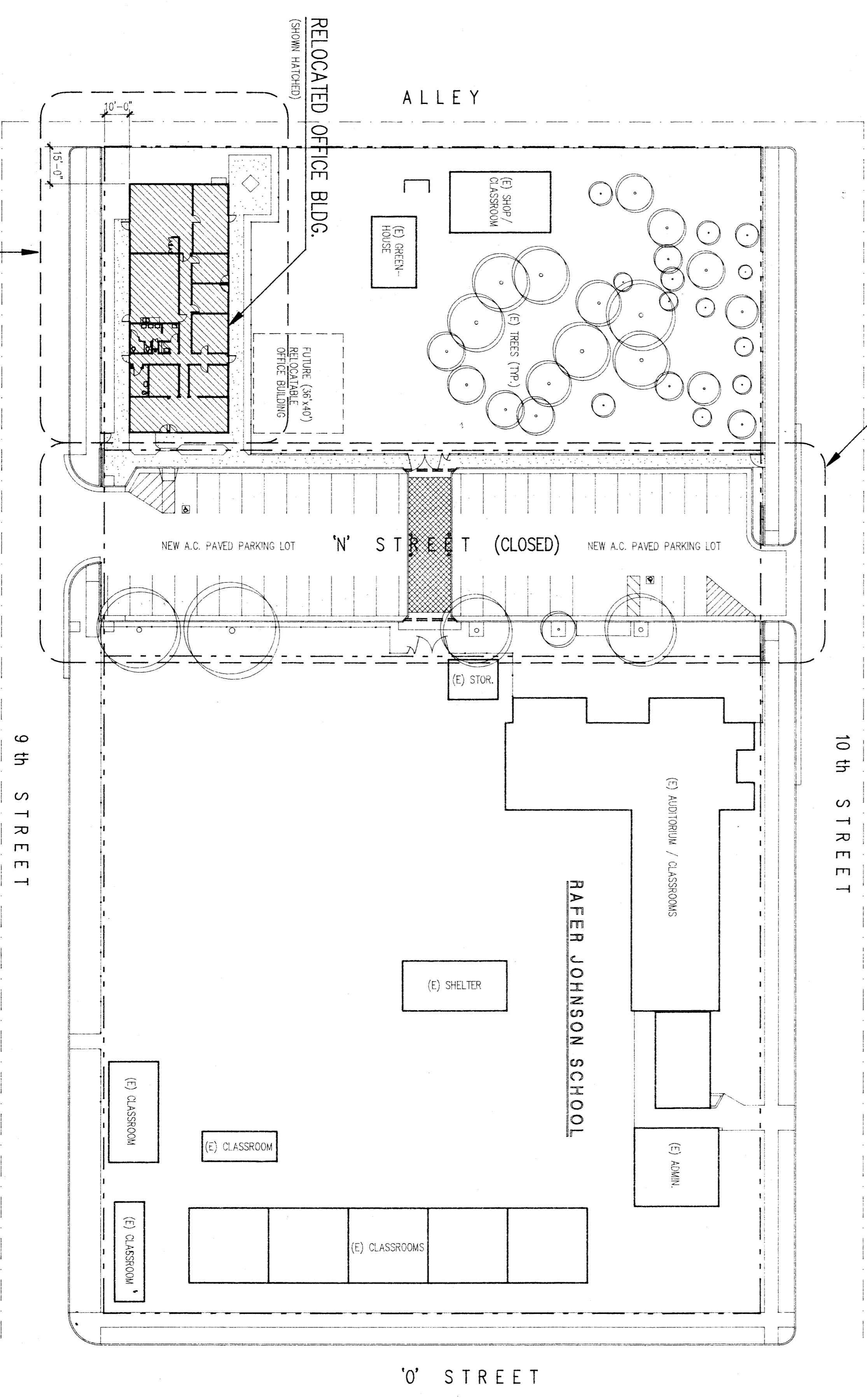
OBTAIN & PAY FOR ALL PERMITS & FEES REQUIRED BY LEADAGY CONSTITUTED AUTHORITIES
 ALL WORK, MATERIALS & INSTALLATION SHALL COMPLY WITH THE LATEST RULES & REGULATIONS OF OUR TITLE 19, 21 & 24, OR -OSHA, IFPA, UBC, NEC & STATE CODES

PHASE TWO (SEE SHEET A3)

SCOPE OF WORK:
 1. STREET IMPROVEMENTS CONSISTING OF: CONCRETE CURB & GUTTERS, CONCRETE WALKS, A.C. PAVING, CATCH BASINS, STORM DRAINS, ETC.
 2. DEVELOPMENT OF TWO (2) PARKING LOTS CONSISTING OF: A.C. PAVING, STORMWATER HANDICAP SURFING, BURNER POSTS, ETC....

PHASE ONE (SEE SHEET A2)

SCOPE OF WORK:
 1. PREPARE EXISTING SITE TO RECEIVE RELOCATED OFFICE BUILDING.
 2. SET BUILDING IN PLACE & CONNECT NEW UTILITIES.
 3. SITE IMPROVEMENTS CONSISTING OF: CONCRETE WALKS & PATHS, FENCING, PLANTERS, ETC....

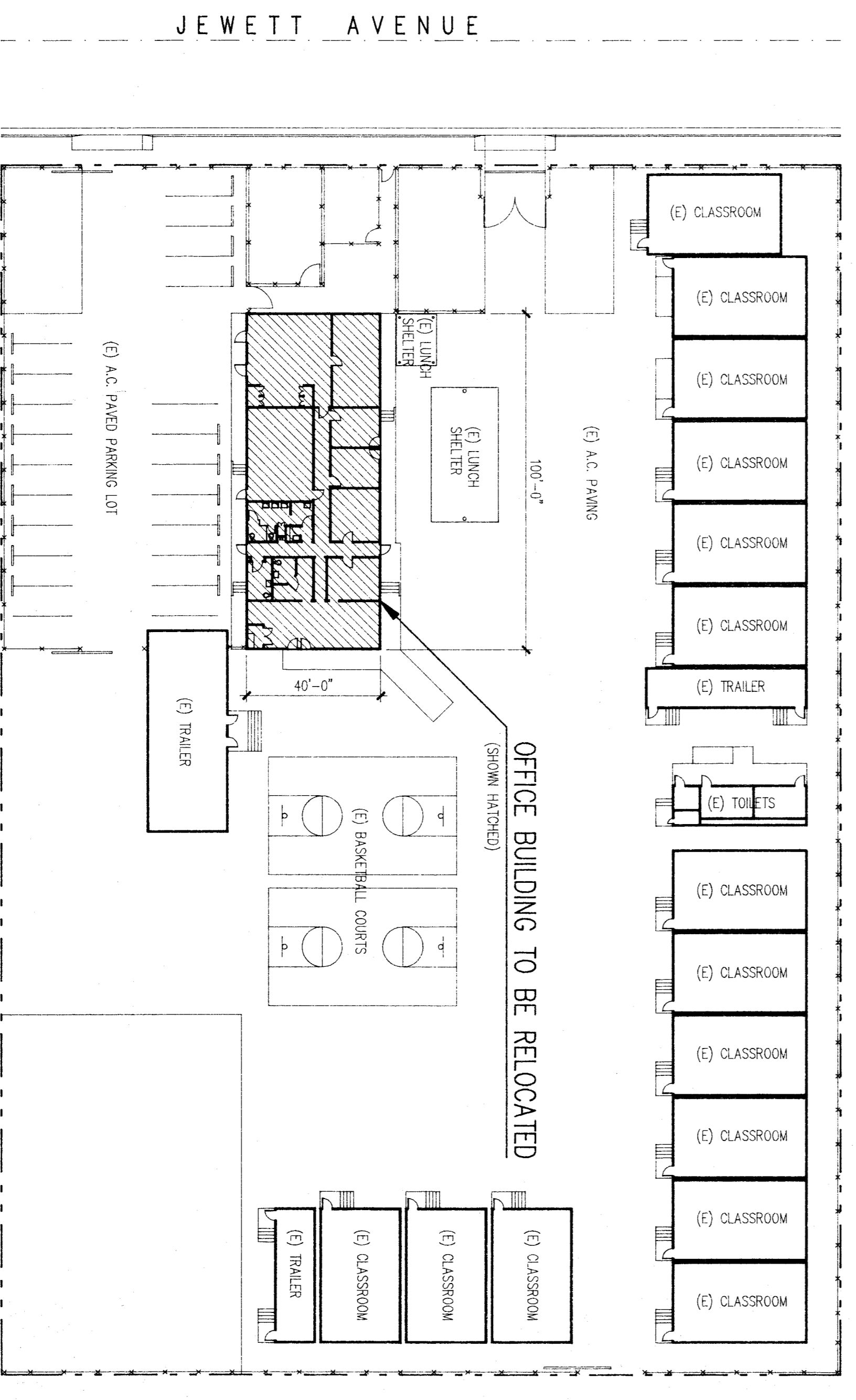


VICINITY MAP

NOT TO SCALE

SHEET INDEX

SHEET	ARCHITECTURAL
A1	SHEET INDEX ~ VICINITY MAP ~ SCHOOL SITE PLANS ~ NOTES
A2	PART. SITE DEVELOPMENT PLAN ~ DEMO. PLAN ~ FLOOR PLAN ~ SCHEMATIC PLAN
A3	SECTION ~ EXTERIOR ELEVATIONS
A4	ROOM FINISH SCHEDULE ~ ABBREVIATIONS ~ DETAILS
A5	DEMOLITION PLAN ~ SITE DEVELOPMENT PLAN
CIVIL	
C0	KEY PLAN ~ VICINITY MAP ~ DETAILS
C1	SITE PLAN ~ NOTES ~ DETAILS
C2	TOPOGRAPHIC / BOUNDARY PLAN ~ LEGEND
STRUCTURAL	
S1	FOUNDATION PLAN ~ DETAILS ~ NOTES
PLUMBING	
P1	PLUMBING SITE PLAN ~ PLUMBING FLOOR PLAN
LANDSCAPE	
L1	IRRIGATION PLAN ~ SCHEDULE ~ DETAILS
ELECTRICAL	
E1	SITE PLAN ~ SYMBOL SCHEDULE ~ ONE LINE DIAGRAM ~ DETAILS
E2	FLOOR PLAN ~ DETAILS
EXISTING BUILDING PLANS	
B1	ORIGINAL STRUCTURAL SHEET (S2)
B2	ORIGINAL ELECTRICAL SHEET (E1)



Stella Hills School

SITE PLAN

SCALE: 1" = 30'-0"

Rafter Johnson School

SITE PLAN

SCALE: 1" = 30'-0"

BAKERSFIELD CITY SCHOOL DISTRICT
 BY RESOLUTION OF THE BOARD OF TRUSTEES APPROVED: [Signature] DATE: 4-22-92
 DRAWN: J.A.
Glenn Hartzell-Architect, inc. (805) 324-6416
 26 'H' STREET, 93304 P.O. BOX 2344, 93303, BAKERSFIELD, CALIFORNIA
 ARCHITECT C-10298
 SHEET INDEX ~ VICINITY MAP ~ SCHOOL SITE PLANS ~ NOTES
(OFFICE BUILDING RELOCATION)
RAFER JOHNSON SCHOOL
 BAKERSFIELD CITY SCHOOL DISTRICT
 CORNER OF 9th & 'N' STREET, BAKERSFIELD, KERN COUNTY, CALIFORNIA
 JOB NO. 167
 SHEET NO. A1
 SHEET 1 OF 5
 LICENSED ARCHITECT
 GLENN E. HARTZELL
 No. C-10298
 Oct. 31, 1993
 EXPIRES DATE
 STATE OF CALIFORNIA