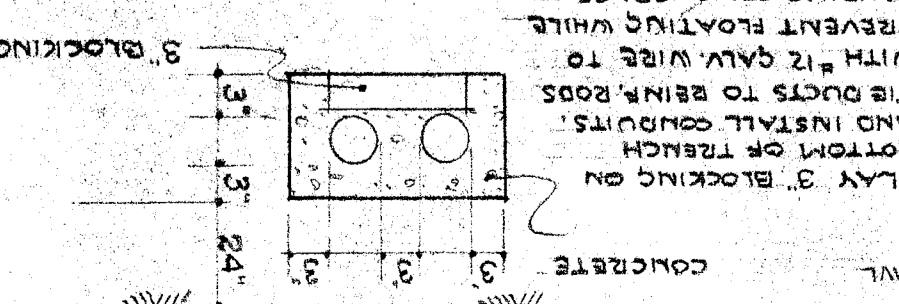


PANEL A
120/208V 3Φ 4W 5N-TYPE NLAB-4AB 150AT-3P

ROLES	CIRCUITS	LOAD	CIRCUITS		LOAD
			LINE 1	LINE 2	
1	20	1000	2	1000	1
2	20	1000	2	1000	1
3	1000	4	1000	1	1
4	1000	4	1000	1	1
5	900	6	900	2	2
6	900	2	900	1	1
7	600	2	600	1	1
8	500	4	500	1	1
9	500	2	500	1	1
10	500	2	500	1	1
11	1000	2	1000	1	1
12	1000	2	1000	1	1
13	800	2	800	1	1
14	300	2	300	1	1
15	300	2	300	1	1
16	720	2	720	1	1
17	720	1	720	1	1
18	720	1	720	1	1
19	720	1	720	1	1
20	32	32	32	32	32
21					
22					
23					
24					
25					
26					
27					
28					
29					
30					
31					
32					

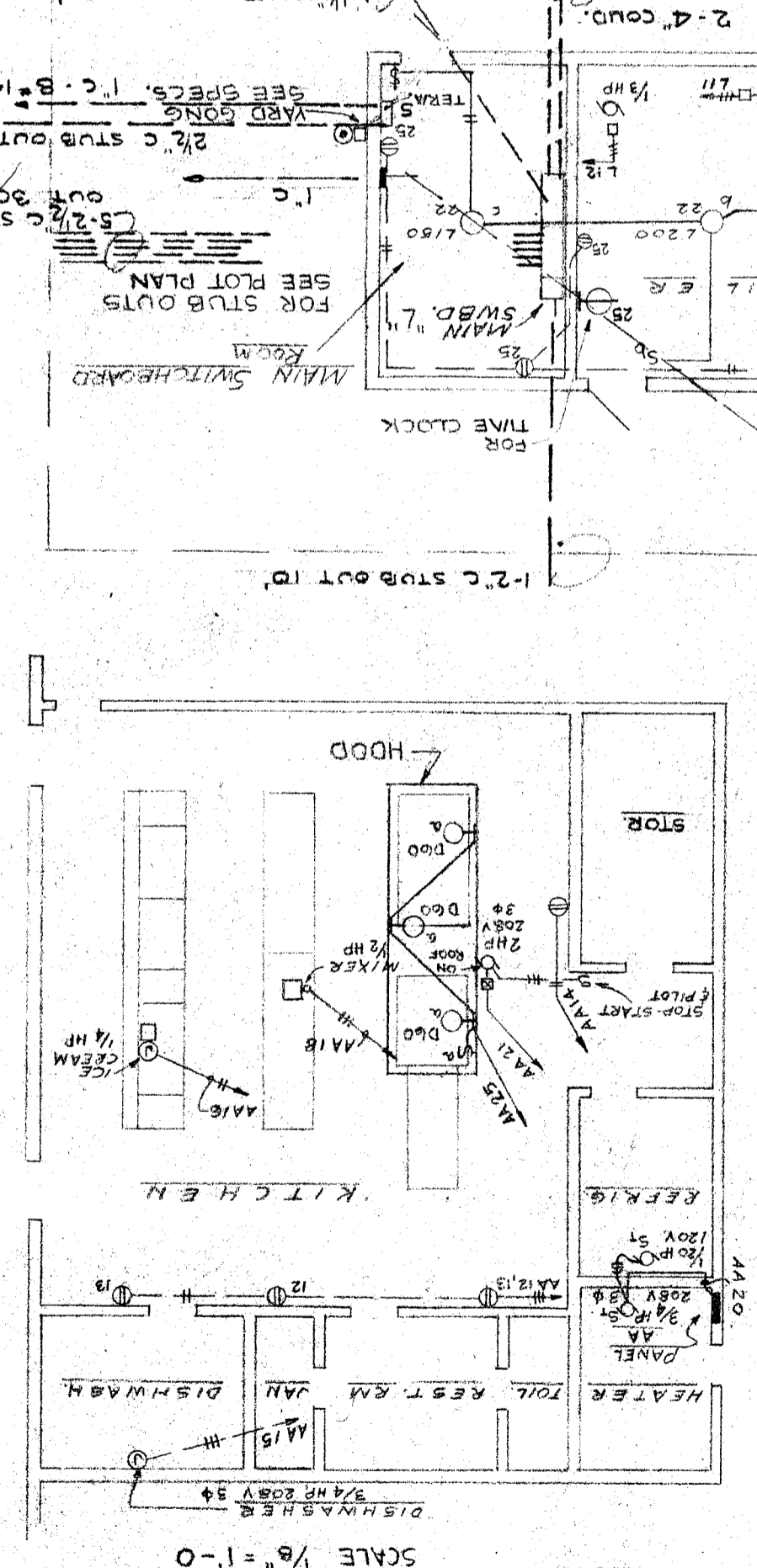
PANEL "AA"
120/208V 3Φ 4W 5N-TYPE NLAB-4AB 150AT-3P

ROLES	CIRCUITS	LOAD	CIRCUITS		LOAD
			LINE 1	LINE 2	
1	20	1000	2	1000	1
2	20	1000	2	1000	1
3	1000	4	1000	1	1
4	1000	4	1000	1	1
5	900	6	900	2	2
6	900	2	900	1	1
7	600	2	600	1	1
8	500	4	500	1	1
9	500	2	500	1	1
10	500	2	500	1	1
11	1000	2	1000	1	1
12	1000	2	1000	1	1
13	800	2	800	1	1
14	300	2	300	1	1
15	300	2	300	1	1
16	720	2	720	1	1
17	720	1	720	1	1
18	720	1	720	1	1
19	720	1	720	1	1
20	32	32	32	32	32
21					
22					
23					
24					
25					
26					
27					
28					
29					
30					
31					
32					



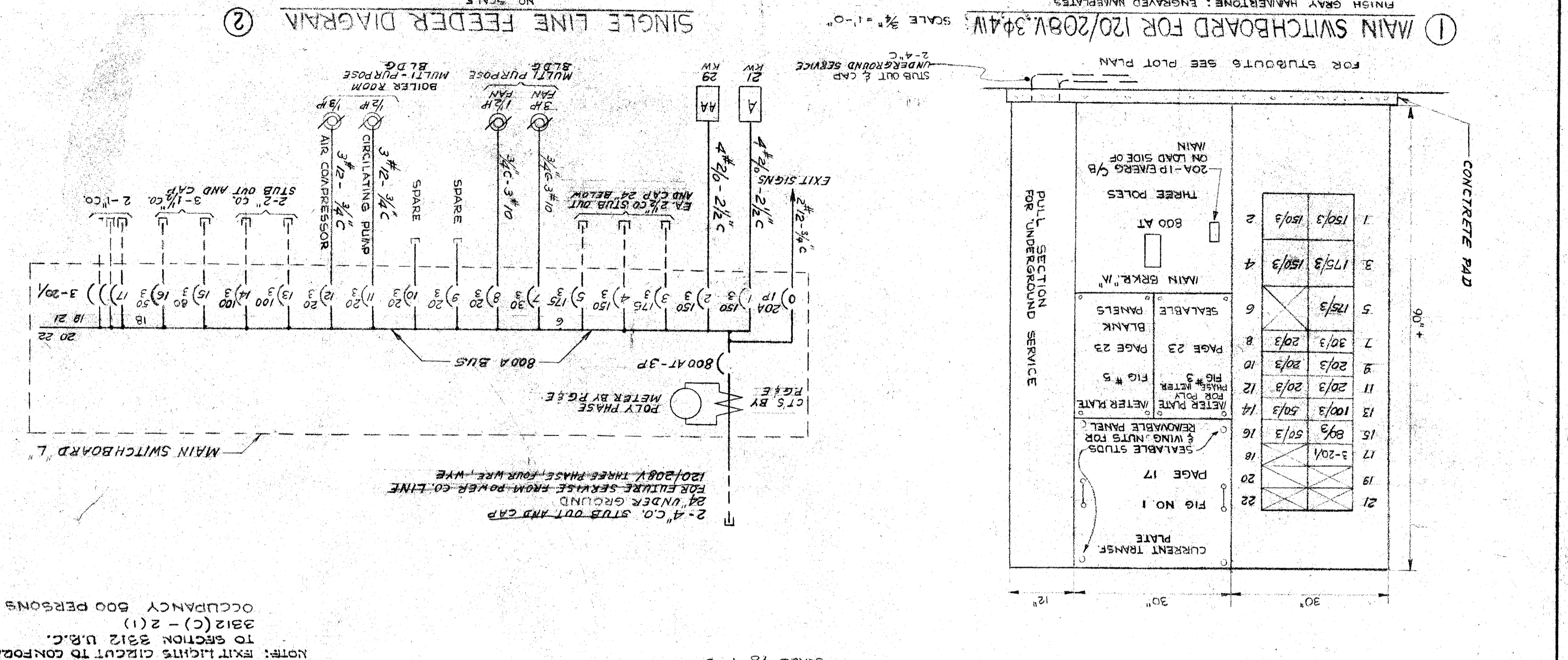
DUCT BANK
SCALE 1/8" = 1'-0"

KITCHEN POWER PLAN
SCALE 1/8" = 1'-0"

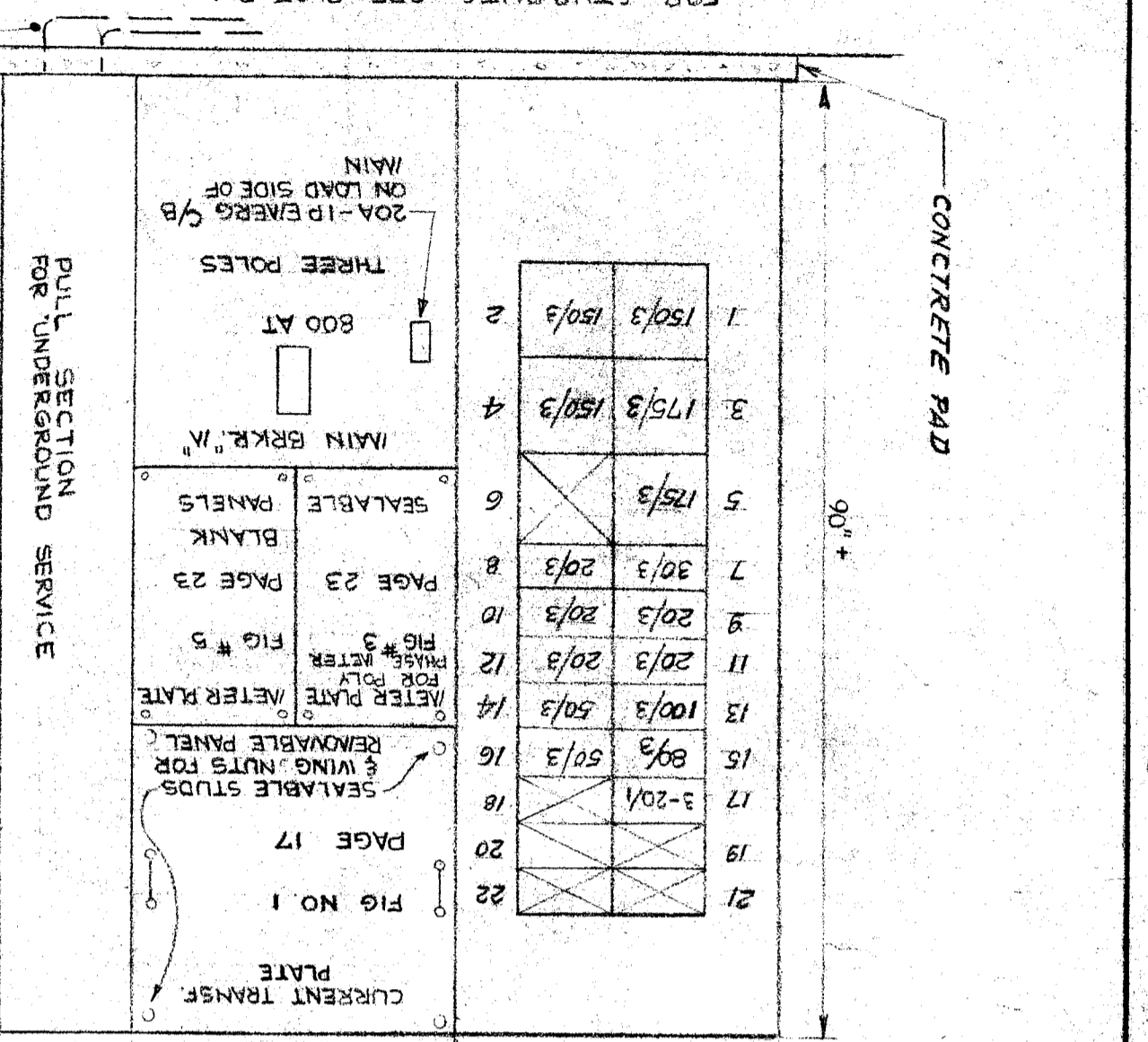


LIGHTING AND POWER LAYOUT

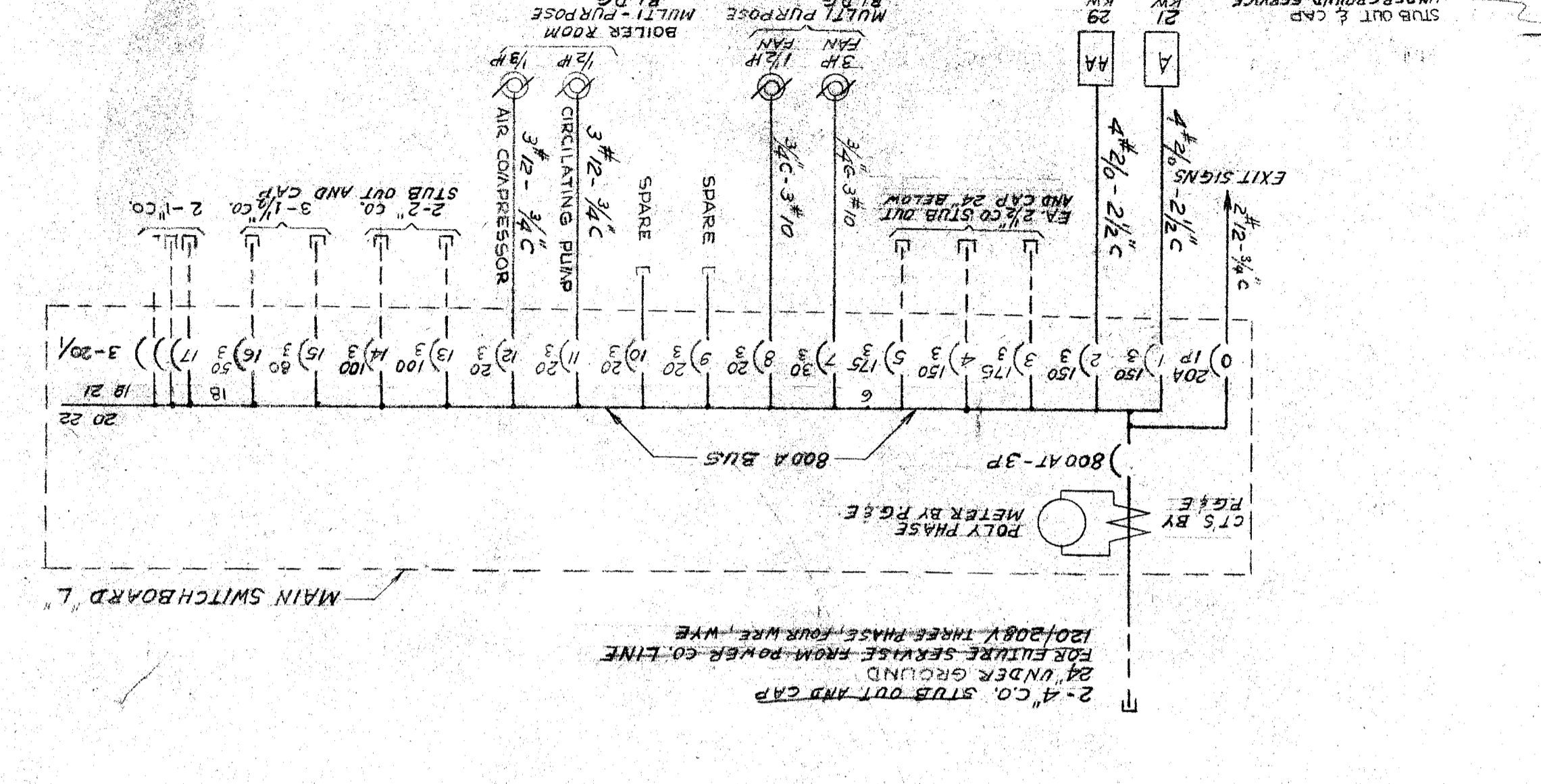
MULTI-PURPOSE BUILDING SCALE 1/8" = 1'-0"



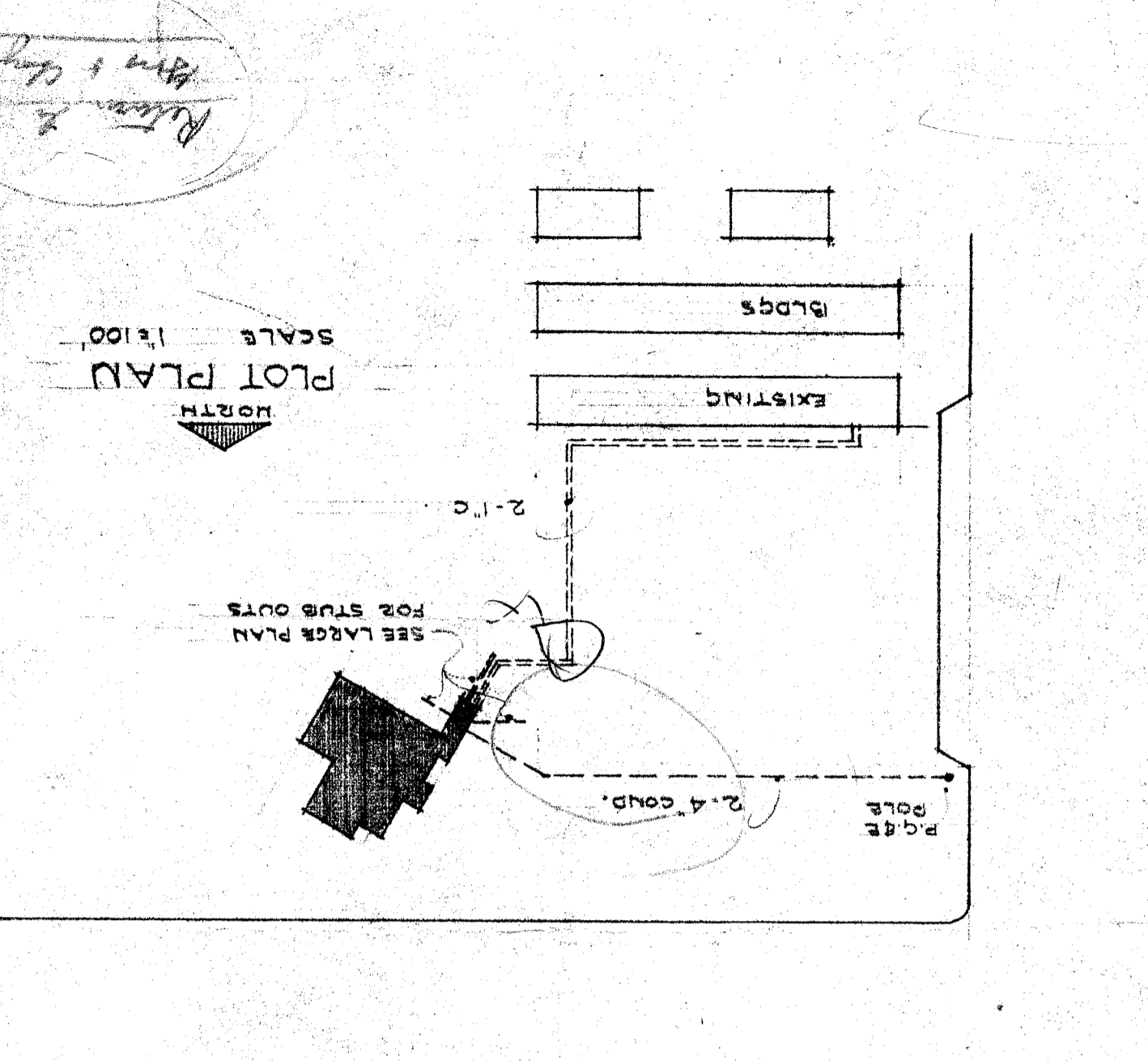
① MAIN SWITCHBOARD FOR 120/208V, 3Φ, 4W, SCALE 3/8" = 1'-0"



② SINGLE LINE FEEDER DIAGRAM NO SCALE



ENGRAVED MANUFACTURE SCHEDULE
CONNECTED LOAD = 28,830 WATTS APPROX 80 AMP
1. PANEL "A" MULTI-PURPOSE ROOM PLATFORM.
2. FEEDER FOR WING II, V, VI.
3. FEEDER FOR WING II, V, VI.
4. BLANK.
5. FEEDER FOR WING I, II.
6. FEEDER FOR WING I, II.
7. FAN 3HP MULTI-PURPOSE ROOM.
8. FAN 1 1/2 HP.
9. BLANK.
10. BLANK.
11. AIR COMPRESSOR.
12. CIRCULATING PUMP.
13. BLANK.
14. BLANK.
15. FEEDER FOR WING III.
16. BLANK.
17. BLANK.



PLANT SCHEDULE

1. PROVIDE TWO EMPTY 3/4" CONDUIT STUBS FROM PLUMBING TO ACCESSIBLE 4" BOXES IN ATTIC SPACE.
2. CHECK ALL MOTOR LOCATIONS WITH MECHANICAL CONTRACTOR. ELECTRICIAN SHALL INSTALL THE CONDUIT & PUT THE WIRES TO ALL EQUIPMENT ARE CONNECTED AT MOTOR & EQUIPMENT ARE INSTALLED BY OTHERS.
3. ALL WIRING SHALL BE CONNECTED TO PANEL CIRCUIT NUMBER AS INDICATED WITH WIRE UNLESS OTHERWISE INDICATED. SEE PANEL SCHEDULES.
4. ALL RUA'S ENTERING RECESS LIGHTING FIXTURES OR WIRING SHALL BE WIRED WITH TYPE FIA WIRE.
5. CONDUIT RUNS TO SERVE AS EQUIP. GROUND. CONNECT CONDUITS TO CITY WATER PIPE W/ #4 G.W. & CULP. AND CLAMP.