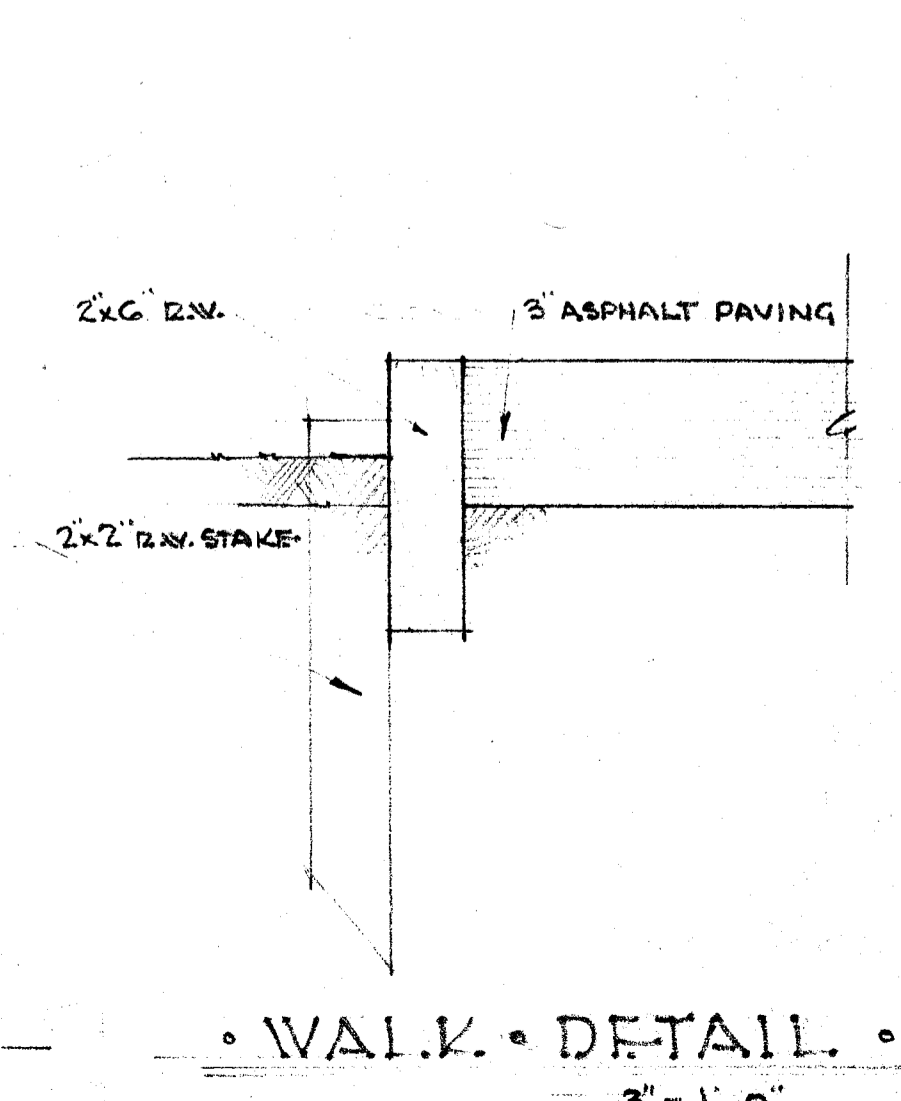
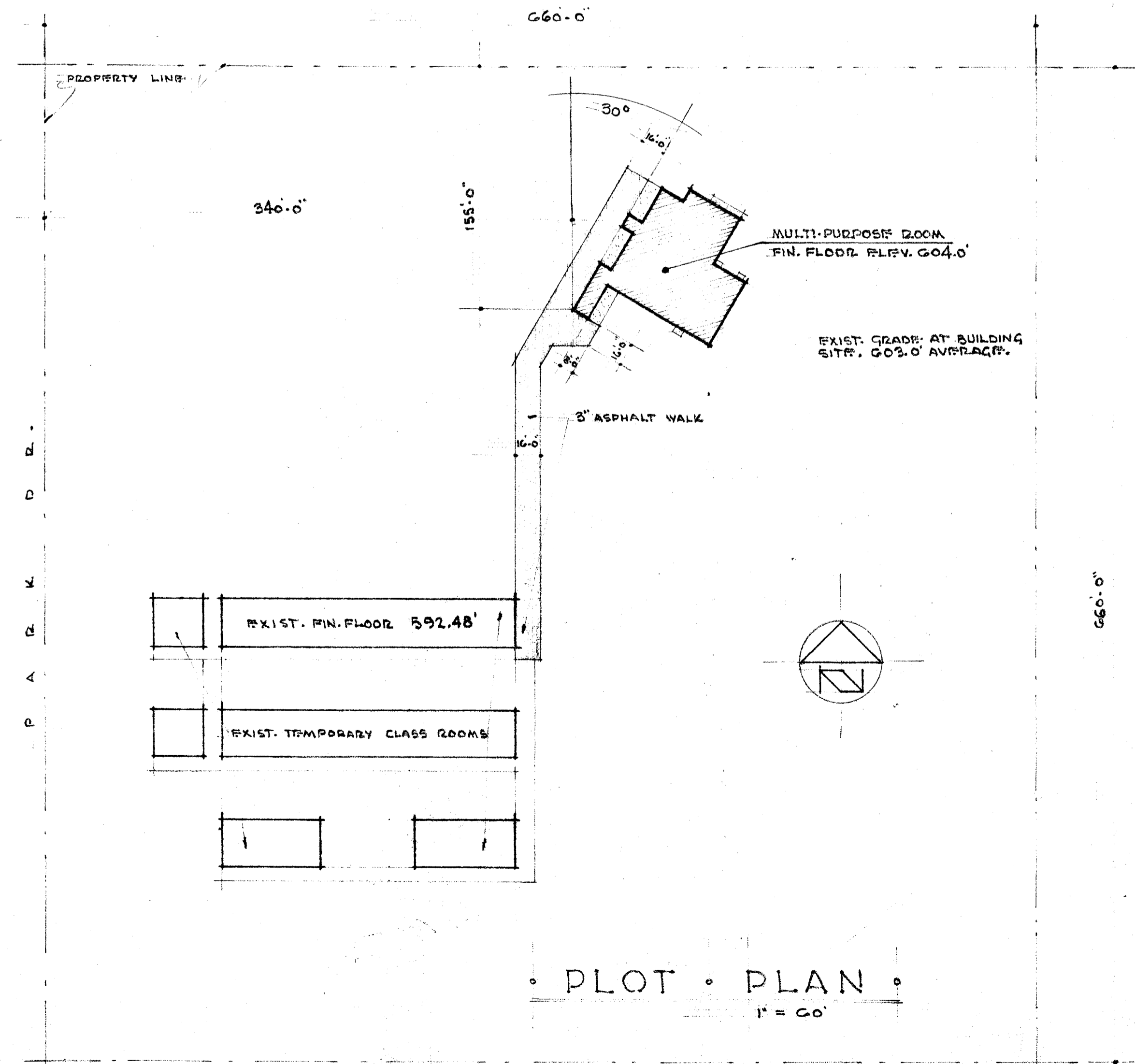


multi-purpose-room HORT SCHOOL

bakersfield-city-school-district
 bakersfield, california

alford, thomas & leydenfrost
 C. B. ALFORD, W. J. THOMAS ARCHITECTS H. B. LEYDENFROST



• I N D E X •	
No.	DESCRIPTION
• ARCHITECTURAL •	
①	• PLOT PLAN •
②	• FLOOR PLAN • RM. FIN. SCH'D.
③	• ROOF PLAN • EXT. ELEV.
④	• SECTIONS
⑤	• SECTIONS
⑥	• KITCHEN PLAN & ELEV'S
⑦	• MILL DETAILS
• STRUCTURAL •	
①	• TYPICAL STRUCT. DETAILS
②	• FOUNDATION PLAN
③	• ROOF FRAMING
④	• SECTIONS
⑤	• SECTIONS
⑥	• SECTIONS
⑦	• TRUSS DETAILS
• MECHANICAL •	
①	• MECH. PLAN & CONTROLS.
• PLUMBING •	
①	• PLUMBING LAYOUT
• HEATING •	
①	• HEATING LAYOUT
• ELECTRICAL •	
①	• ELECTRICAL LAYOUT

STATE OF CALIFORNIA - COUNTY OF KINGS
 DIVISION OF INDUSTRIAL
 10458 APPROVED SEP 27 1957
 H. B. LEYDENFROST
 REGISTERED PROFESSIONAL ENGINEER