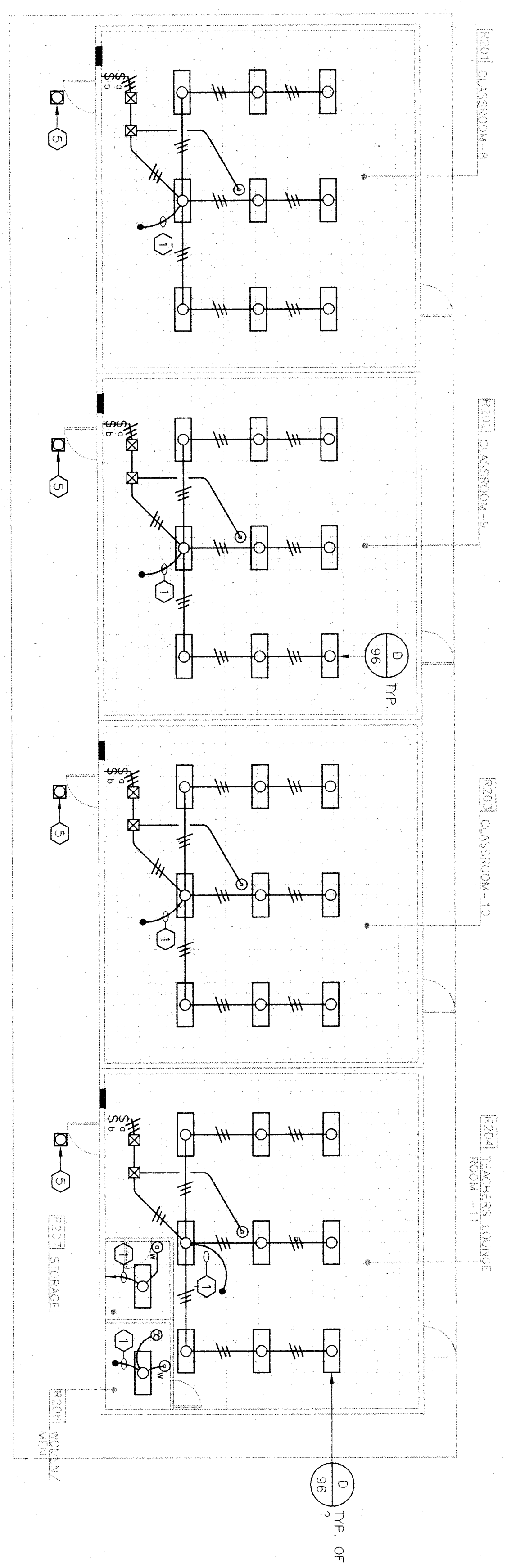
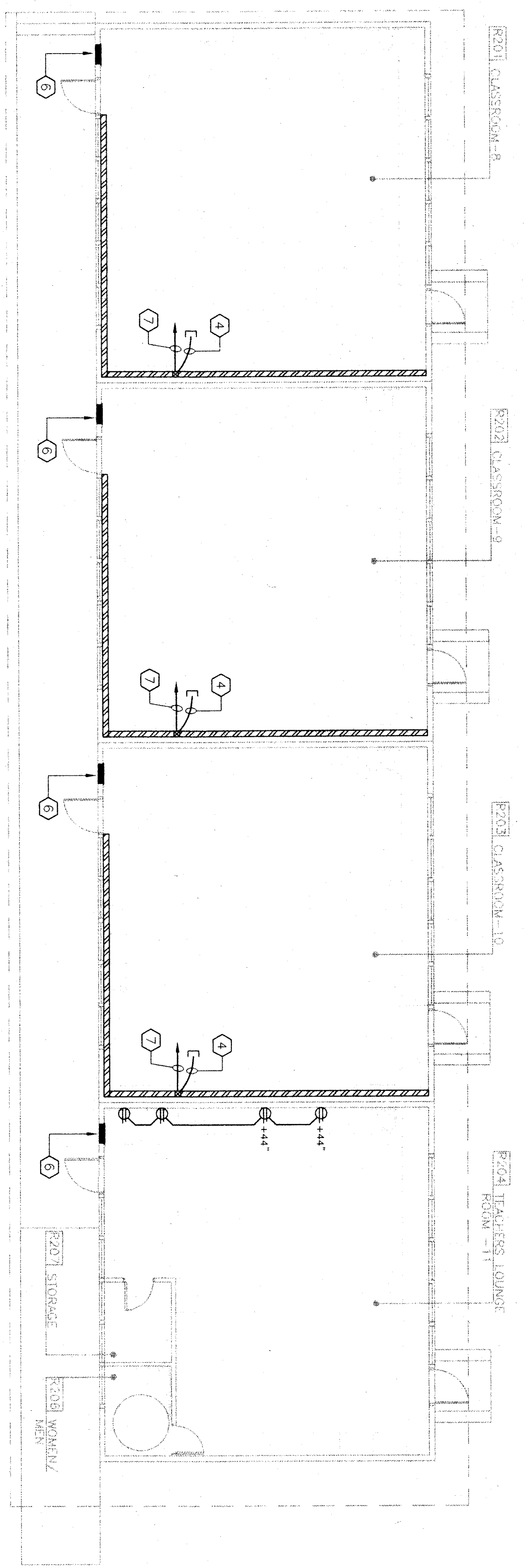


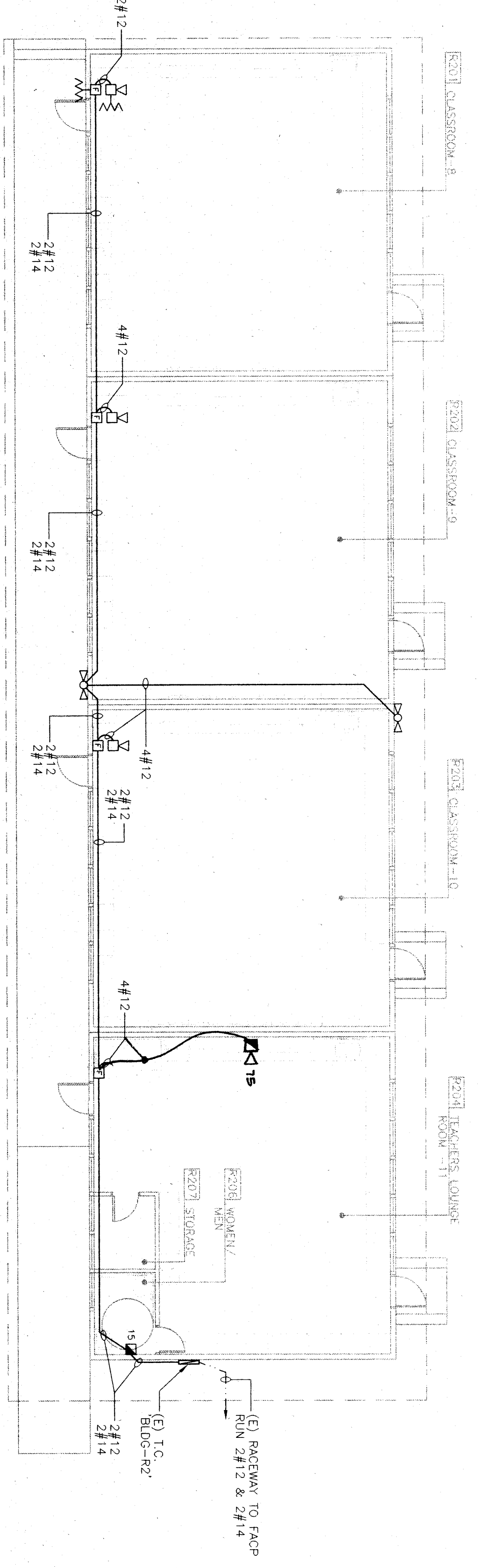
BUILDING "R2" DEMOLITION PLAN



BUILDING "R2" LIGHTING PLAN



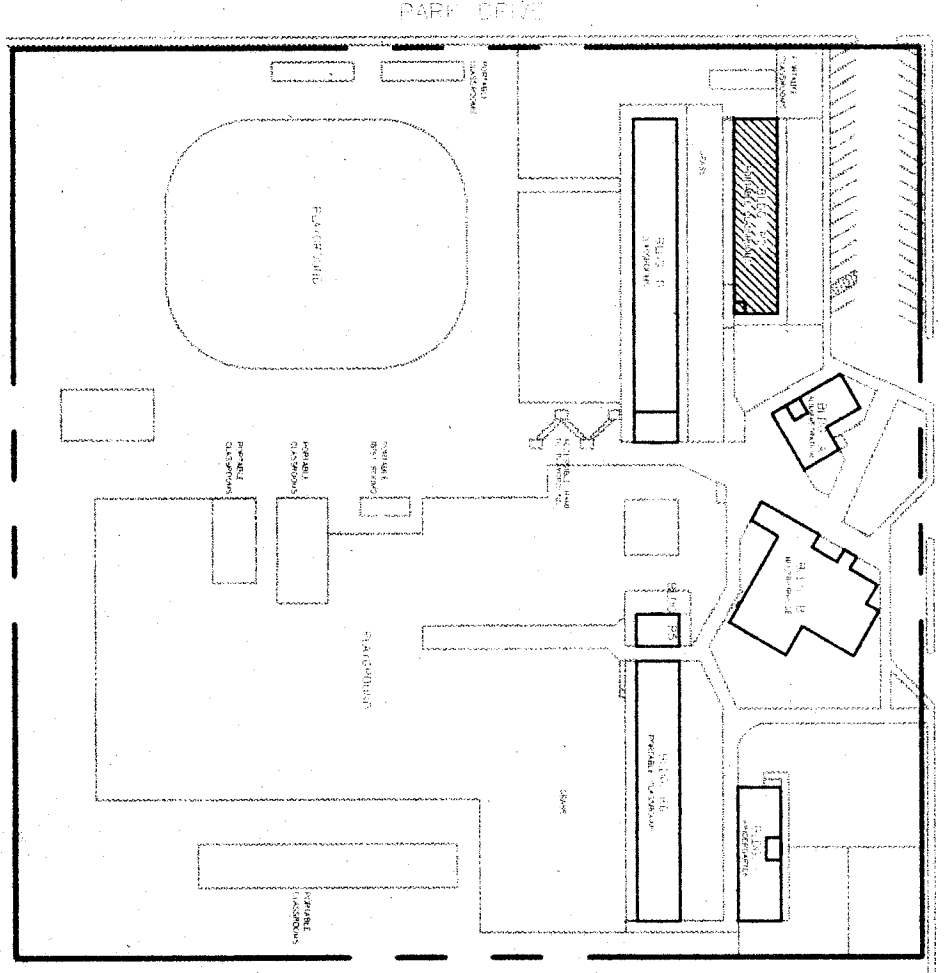
BUILDING "R2" POWER/SIGNAL PLAN



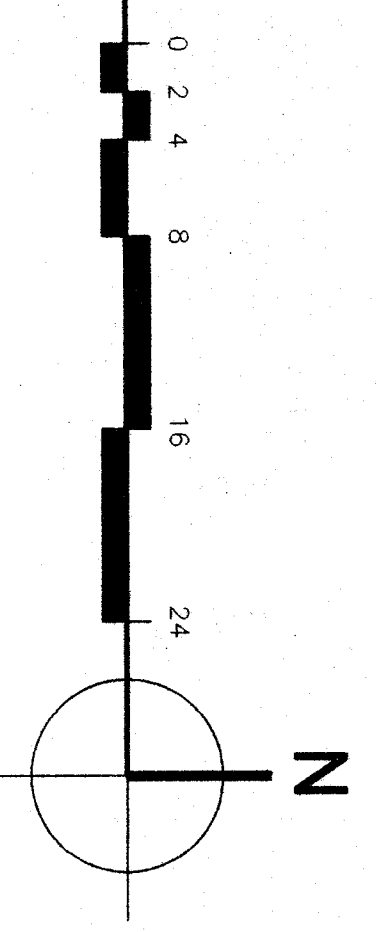
BUILDING "R2" FIRE ALARM PLAN

BUILDING "R2" ELECTRICAL FLOOR PLAN

- REFERENCE NOTES:**
- 1 INTERCEPT AND EXTEND EXISTING LIGHTING CIRCUIT AS REQUIRED.
 - 2 REMOVE ALL EXISTING LIGHT FIXTURES FOR THIS AREA. SEE LIGHTING PLAN FOR NEW LOCATIONS.
 - 3 DISCONNECT AND REMOVE ALL EXISTING ELECTRICAL WIRING NOT BEING REUSE IN THIS AREA.
 - 4 (3) 1 1/4" STUB-UP IN TO ATTIC FOR COMMUNICATION. SEE DETAIL 1/24.01
 - 5 REPLACE EXISTING LIGHT FIXTURE W/NEW FIXTURE AND CONNECT TO EXISTING CIRCUIT.
 - 6 REPLACE (E) PANEL W/NEW PANEL. 100A-42 CNTS CUT AND PATCH (E) PLASTER WALL AS REQUIRED. SEE DETAIL 2/24.01
 - 7 3/4" x 4 1/2" 20A SINGLE POLE BREAKERS. INSTALL (2) 20A SINGLE POLE BREAKERS.



KEY PLAN



REGISTERED PROFESSIONAL ENGINEER - ELECTRICAL
 JAMES W. GORDON
 No. 5101
 08/20/02
 LICENSED BY THE STATE OF CALIFORNIA

466 W. Redwood Ave., Suite 106
 Merced, California 95370
 (209) 625-4470 (209) 552-4474 fax
 James W. Gordon, Registered Engineer
 EE #6101

bigc architects planners inc.
 5500 Santa Gertrudis, Suite 400, Bakersfield, CA 93309-4831
 805-838-4340
 fax 805-838-4311

son luis obispo
 2211 Broad Street, Suite 113
 San Luis Obispo, California 93401
 805-545-0433

son jose
 160 West Santa Gertrudis St., Suite 520
 San Jose, California 95113
 408-924-0941

principal architects
 614 E. 4th St., Suite 200, Bakersfield, CA 93301
 805-838-4340
 614 E. 4th St., Suite 200, Bakersfield, CA 93301
 805-838-4340
 614 E. 4th St., Suite 200, Bakersfield, CA 93301
 805-838-4340

HORT SCHOOL MODERNIZATION

BAKERSFIELD CITY SCHOOL DISTRICT

2301 PARK DRIVE
 BAKERSFIELD, CA. 93306

BUILDING "R2" ELECTRICAL FLOOR PLANS

job no.	97-276
date	MAY 12, 98
drawn by	C.A.
chk'd by	J.W.G.
copyright	1997

2.07