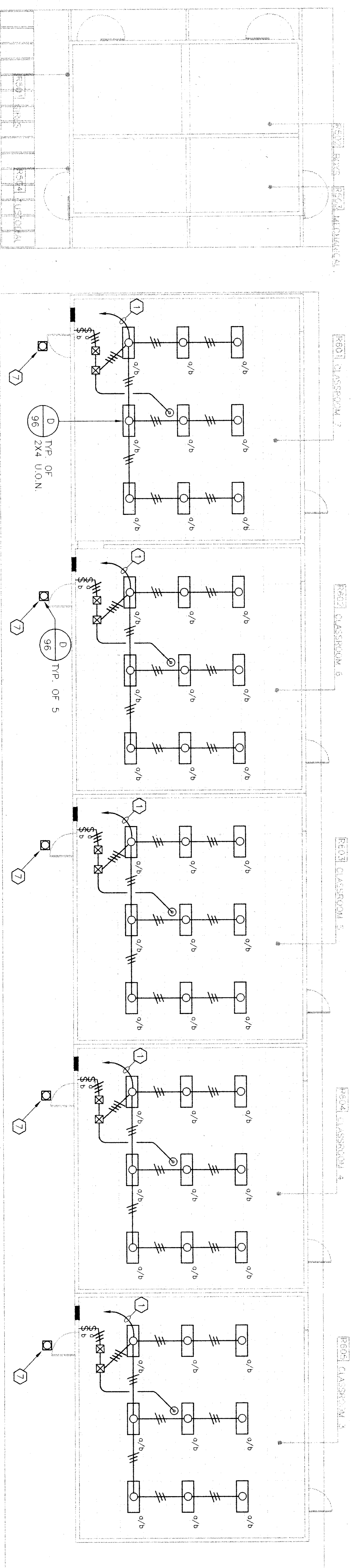
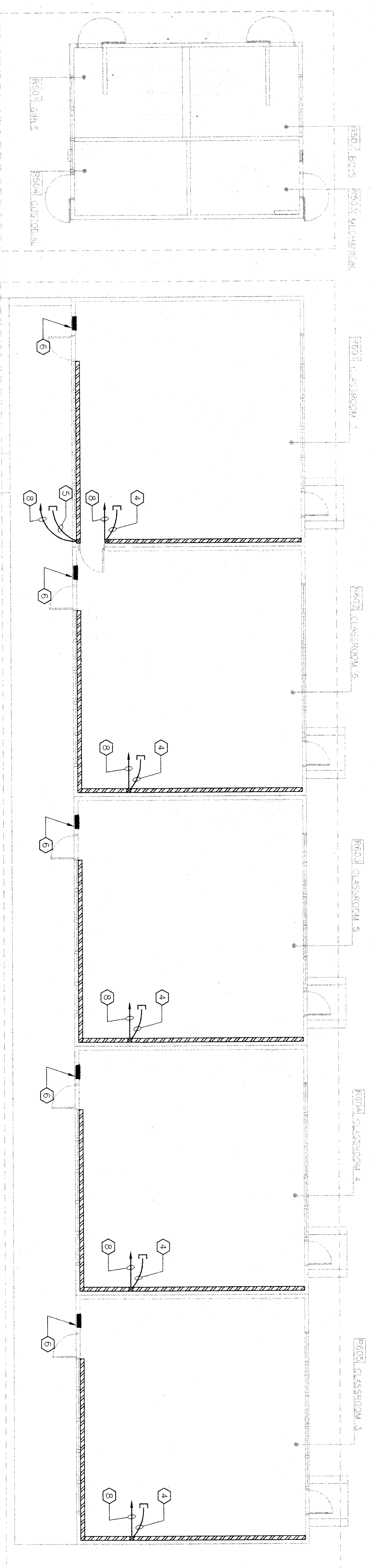


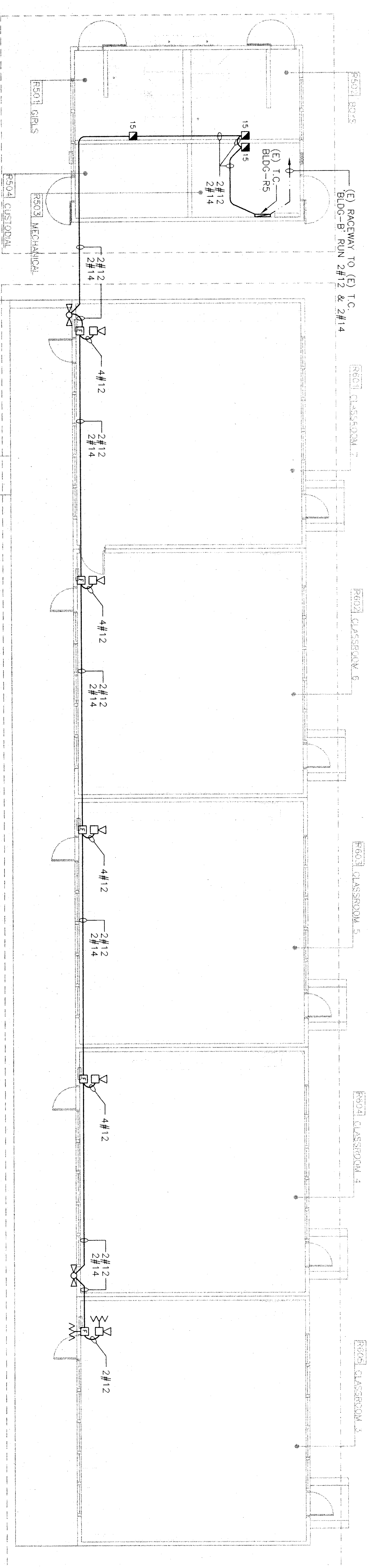
BUILDING "R5" & "R6" DEMOLITION PLAN



BUILDING "R5" & "R6" LIGHTING PLAN



BUILDING "R5" & "R6" POWER/SIGNAL PLAN



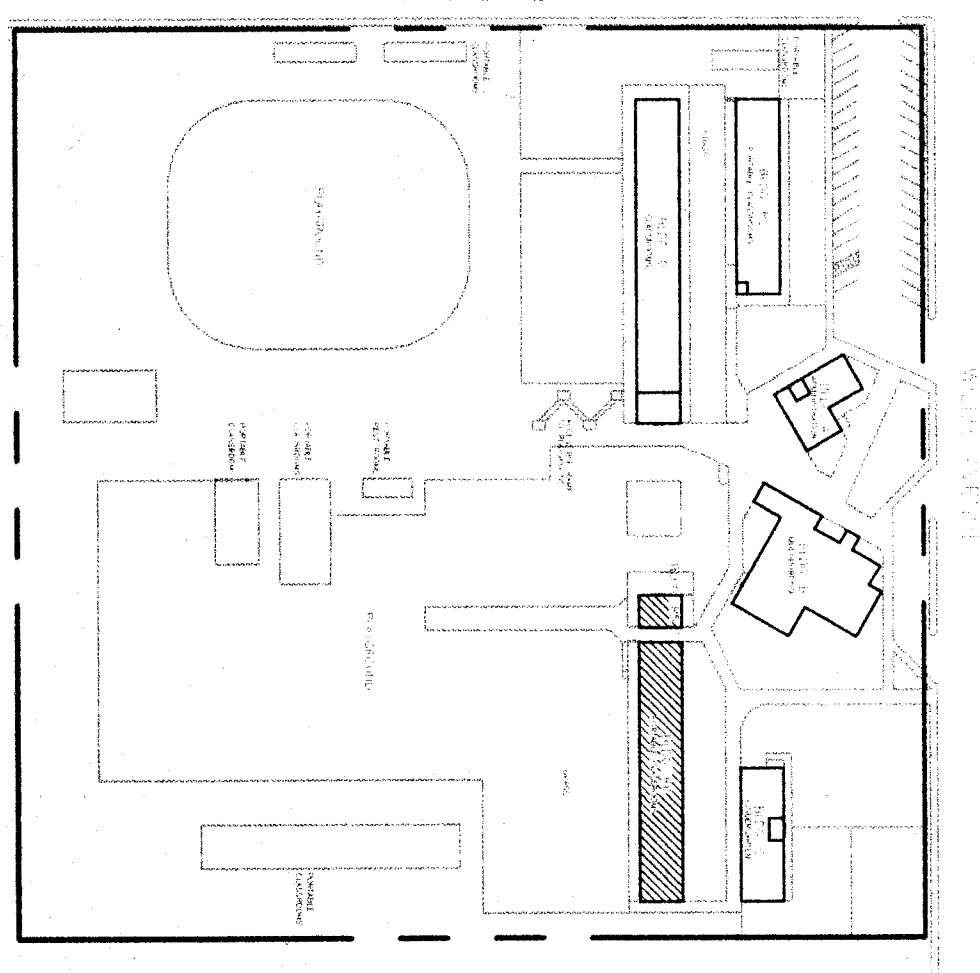
BUILDING "R5" & "R6" FIRE ALARM PLAN

BUILDING "R5" & "R6" ELECTRICAL FLOOR PLAN

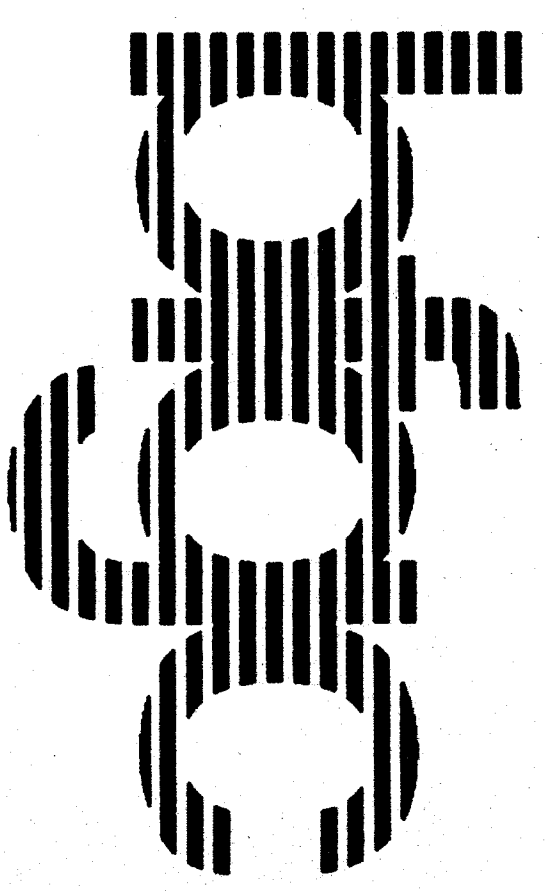
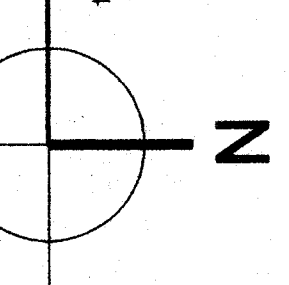
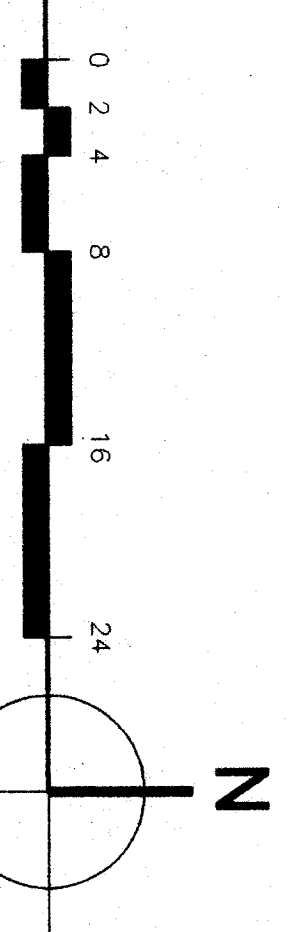
Item (11) Refer to Electrical Drawings, Sheet EA-08.  
 NO #13 Refer to Note #4. REUSE quantity of 1" conduits to 2 in lieu of 3.

REFERENCE NOTES:

- 1 INTERCEPT AND EXTEND EXISTING LIGHTING CIRCUIT AS REQUIRED.
- 2 REMOVE ALL EXISTING LIGHT FIXTURES FOR THIS AREA SEE LIGHTING PLAN FOR NEW LOCATIONS.
- 3 DISCONNECT AND REMOVE ALL EXISTING ELECTRICAL WIRING NOT BEING REUSED IN THIS AREA.
- 4 X 1 1/4" STUB-UP IN TO ATTIC FOR COMMUNICATION. SEE DETAIL 1/24-101
- 5 (2) 1 1/4" STUB-UP IN TO ATTIC FOR COMMUNICATION. SEE DETAIL 1/24-101
- 6 REPLACE (E) PANEL W/NEW PANEL 100A-42 CRTS. CUT AND PATCH (E) PLASTER WALL AS REQUIRED. SEE DETAIL 2/24-101
- 7 REPLACE EXISTING LIGHT FIXTURE W/NEW FIXTURE AND CONNECT TO EXISTING CIRCUIT.
- 8 3/4" 4#12 TO ELECTRICAL PANEL. INSTALL (2) 20A SINGLE POLE BREAKERS.



KEY PLAN



**REGISTERED PROFESSIONAL ENGINEER**  
 No. 5101  
 EXPIRES 09/30/02  
 JAMES W. GARDNER  
 REGISTERED PROFESSIONAL ENGINEER  
 EE #5101

**James W. Gardner, Electrical Engineer**  
 EE #5101  
 404 W. Cabrock Ave., Suite 100  
 Bakersfield, CA 93307  
 (805) 432-4401 (805) 432-4404 fax

**son luis obispo**  
 3211 Broad Street, Suite 113  
 San Luis Obispo, California 93401  
 805 545-9933

**son jose**  
 160 West Santa Clara St., Suite 202  
 San Jose, California 95131  
 408 924-0841

principal architects  
 david r. gordon, aia, c-4544 dora a. hudson, aia, c-3192  
 mark empfield, aia, c-2021 bond a. hudson, aia, c-10801  
 michael j. horton, aia, c-2819  
 1000 N. Market Street, San Jose, CA 95128

**bfgc architects planners inc.**  
 600 W. 9th Avenue, Suite 450, Bakersfield, CA 93307-4531  
 805 539-4500  
 805 539-4501

**HORT SCHOOL MODERNIZATION**  
**BAKERSFIELD CITY SCHOOL DISTRICT**  
 2301 PARK DRIVE  
 BAKERSFIELD, CA 93306

**BUILDING "R5" & "R6" ELECTRICAL FLOOR PLANS**

job no.	97-276
date	MAY 12, 98
drawn by	C.A.
chk'd by	J.W.G.
copyright	1997

2.05